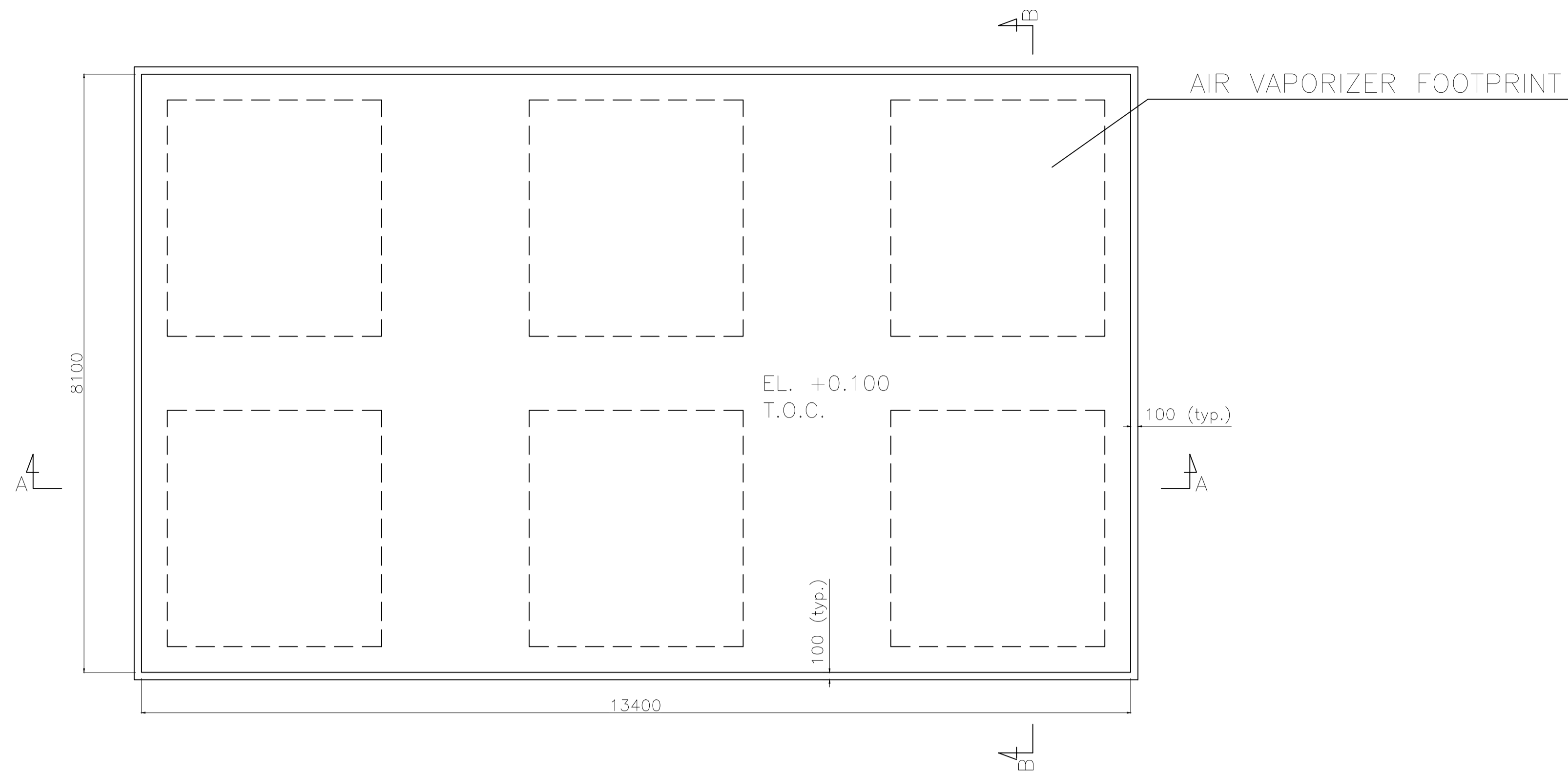


AIR VAPORIZER FOUNDATION PLAN



REFERENCE DRAWINGS / DISEGNI DI RIFERIMENTO	
DWG. N° / N° DIS	DESCRIPTIONS / DESCRIZIONE
0469-TITA-P-PP-000-001	GENERAL PLOT PLAN
.....
.....
.....
.....

NOTES

- ALL DIMENSIONS ARE IN MM AND ALL ELEVATIONS ARE IN M.
- THE REFERENCE ELEVATION ± 0.000 M CORRESPONDES TO +2.500 M A.S.L.
- FOR BASES POSITION AND ORIENTATION SEE FOUNDATION PLAN

MATERIAL LIST

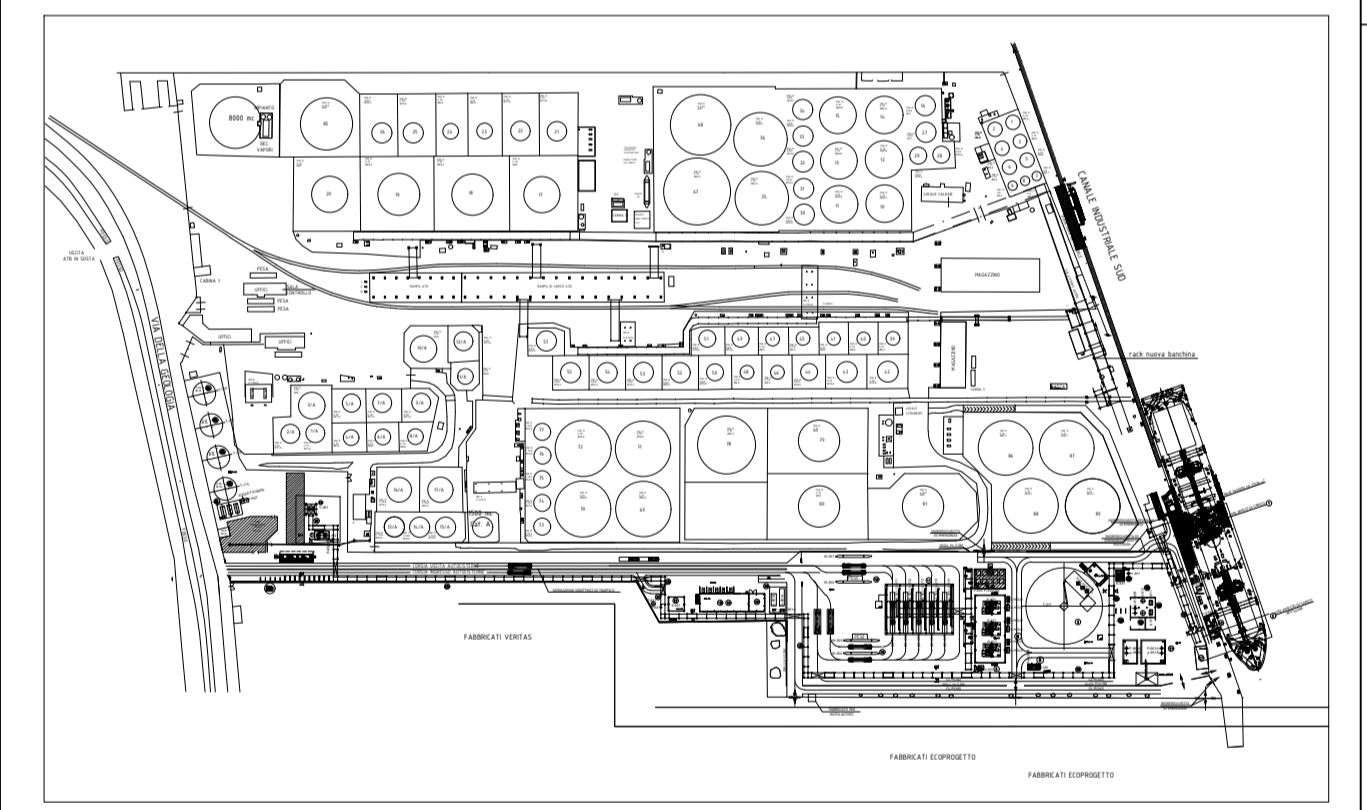
- LEAN CONCRETE
RESISTANCE CLASS C12/15, Rck ≥ 15 N/mm²
- CONCRETE FOUNDATIONS
EXPOSURE CLASS= XA2, XS1
RESISTANCE CLASS MIN. C35/45, Rck ≥ 45 N/mm²;
CONSISTENCY CLASS S4;
RATIO (WATER/CEMENT)_{max}= 0.45;
CEMENT DOSAGE min. = 360 kg/m³;
MINIMUM CONCRETE COVER= 35 mm + 10 mm= 45 mm
- GROUT
GROUT SHALL BE NON-SHRINK CEMENTITIOUS GROUT
50 mm FOR PLATES, STRIPS, BASE RINGS, ETC.

LEGEND

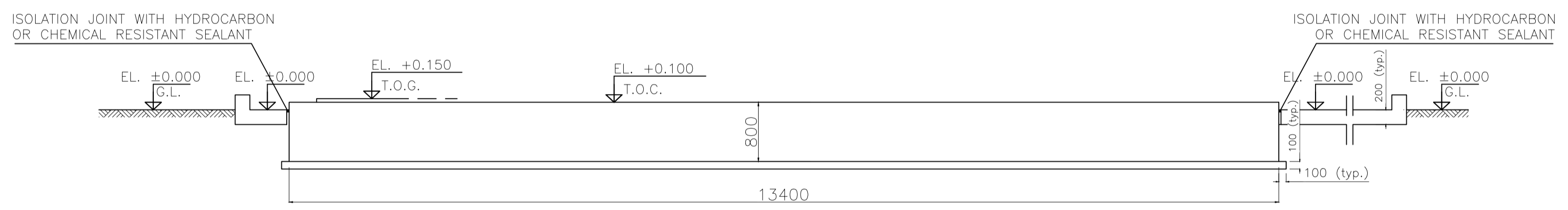
B.O.C. = BOTTOM OF CONCRETE
G.L. = GRADE LEVEL
T.O.C. = TOP OF CONCRETE
T.O.G. = TOP OF GROUTING

THE INFORMATION CONTAINED IN THIS DRAWING IS TO BE CONSIDERED PRELIMINARY AND SHALL BE DULY VERIFIED DURING THE DETAIL DESIGN PHASE

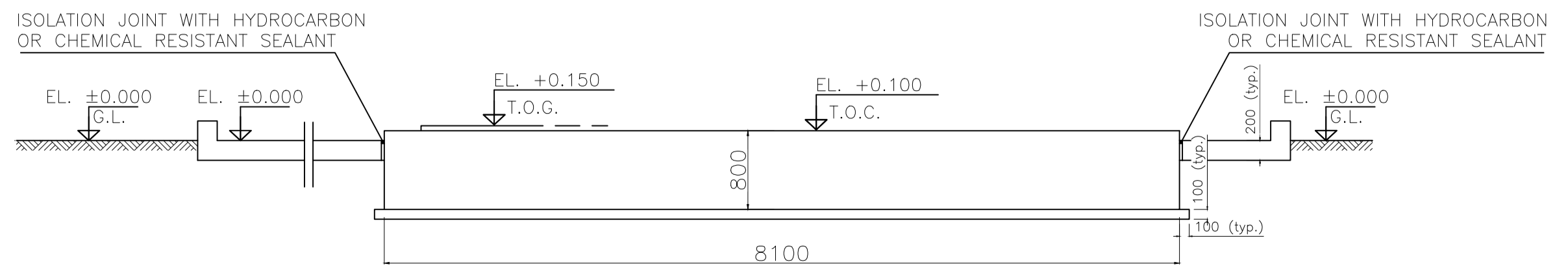
KEY PLAN



SECTION A-A



SECTION B-B



REVISIONS - Modifiche						
REV.	DESCRIPTION - Descrizione	PREP'D - Red.	CHK'D - Contr.	APPR'D - Appr.	REV APPR'D - Appr.	DATE - Data
01	FOR USE	SQL	GCA	DMR	CMA	07/09/20
00	FOR COMMENTS	SQL	GCA	DMR	CMA	30/07/20

CONTRACTOR: **TECHINT** Engineering & Construction

COMPANY: **VeniceLNG**

JOB NUMBER: COMPANY DOC. N°

PROJECT TITLE: **VENICE LNG FEED - VENICE LNG TERMINAL (PORTO MARGHERA)**

TITLE: **LNG VAPORIZERS FOUNDATION FORMWORK**

SCALE: 1:50

FORM. FORMATO: A1

CONTRACTOR DOC. N°: 0469-TITA-C-FO-001-006

REV. 01

SHT. 1 OF 1

CAD FILE N°

La TECHINT si riserva la proprietà di questo disegno con la proibizione di riprodurlo o trasferirlo a terzi senza autorizzazione scritta. This document is property of TECHINT. Reproduction and divulgation forbidden without written permission.