



Engineering & Construction



Via Napoli, 363/I - 70132 Bari - Italy  
www.bfpgroup.net - info@bfpgroup.net  
tel. (+39) 0805046361-fax (+39) 0805619384

UNI EN ISO 9001:2015 - UNI EN ISO

GRE CODE

GRE.EEC.R.26.IT.W.15000.00.039.00

PAGE

1 di/of 7

TITLE: VALUTAZIONE PREVENTIVA DEL RISCHIO ARCHEOLOGICO\_TAVOLE

AVAILABLE LANGUAGE: IT

# VALUTAZIONE PREVENTIVA DEL RISCHIO ARCHEOLOGICO TAVOLE

## SALICE SALENTINO-VEGLIE

File: GRE.EEC.R.26.IT.W.15000.00.039.00

00	20/11/2020	EMISSIONE	BFP Di Stefano	BFP Di Stefano	BFP Di Stefano
REV.	DATE	DESCRIPTION	PREPARED	VERIFIED	APPROVED

### GRE VALIDATION

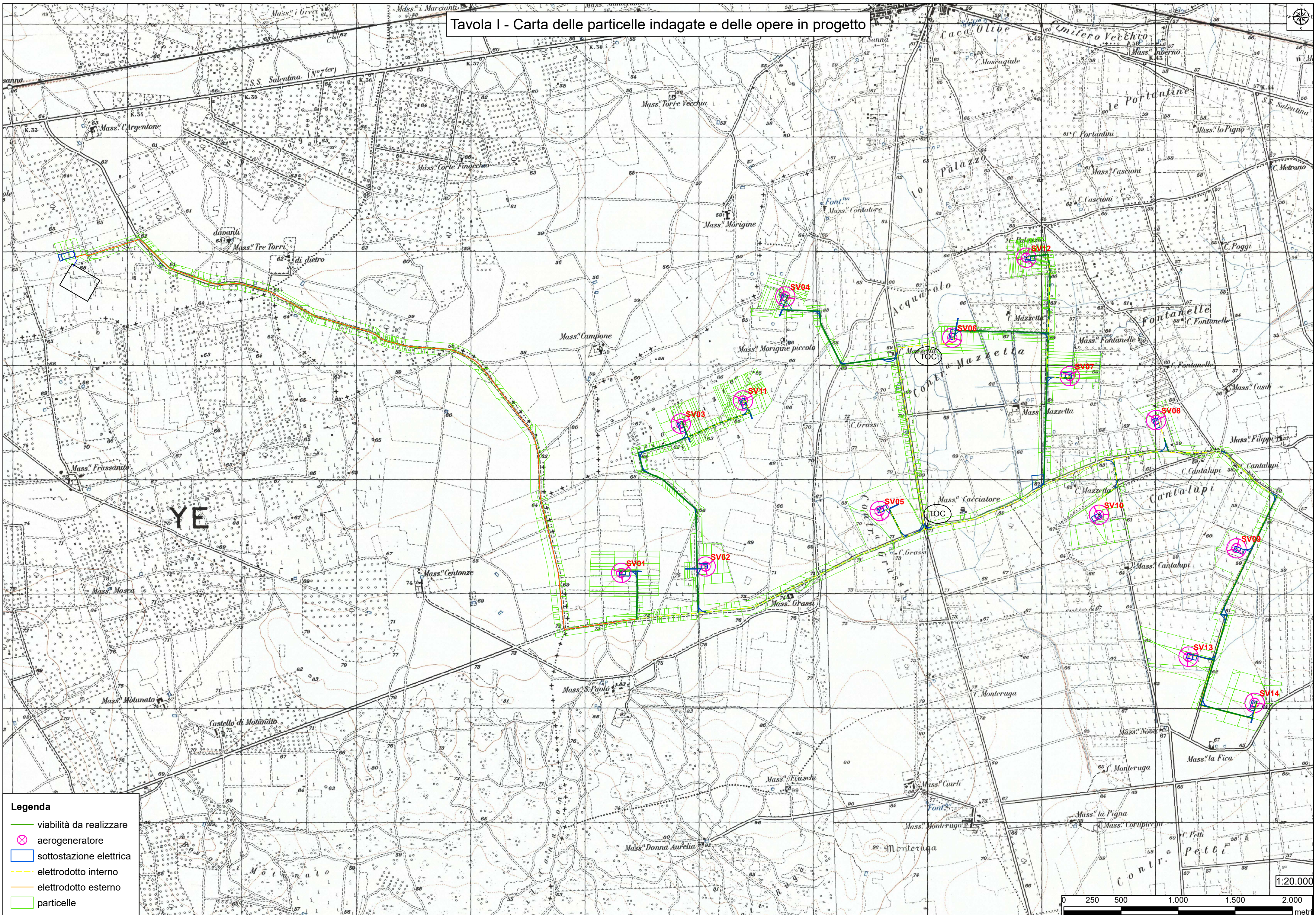
Cicarelli (GRE)	Tedeschi (GRE)	Tamma (GRE)
COLLABORATORS	VERIFIED BY	VALIDATED BY

PROJECT / PLANT .....	GRE CODE																	
	GROUP	FUNCION	TYPE	ISSUER	COUNTRY	TEC	PLANT				SYSTEM	PROGRESSIVE	REVISION					
	GRE	EEC	R	2	6	I	T	W	1	5	0	0	0	0	0	3	9	0

CLASSIFICATION	UTILIZATION SCOPE
----------------	-------------------

This document is property of Enel Green Power S.p.A. It is strictly forbidden to reproduce this document, in whole or in part, and to provide to others any related information without the previous written consent by Enel Green Power S.p.A.

Tavola I - Carta delle particelle indagate e delle opere in progetto



**Legenda**

- viabilità da realizzare
- ⊗ aerogeneratore
- sottostazione elettrica
- elettrodotto interno
- elettrodotto esterno
- particelle

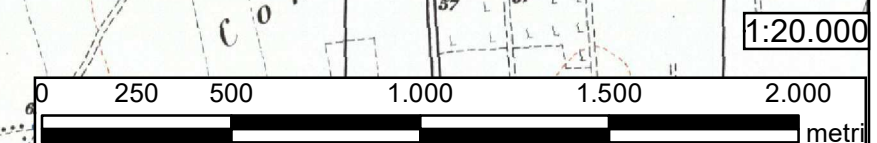
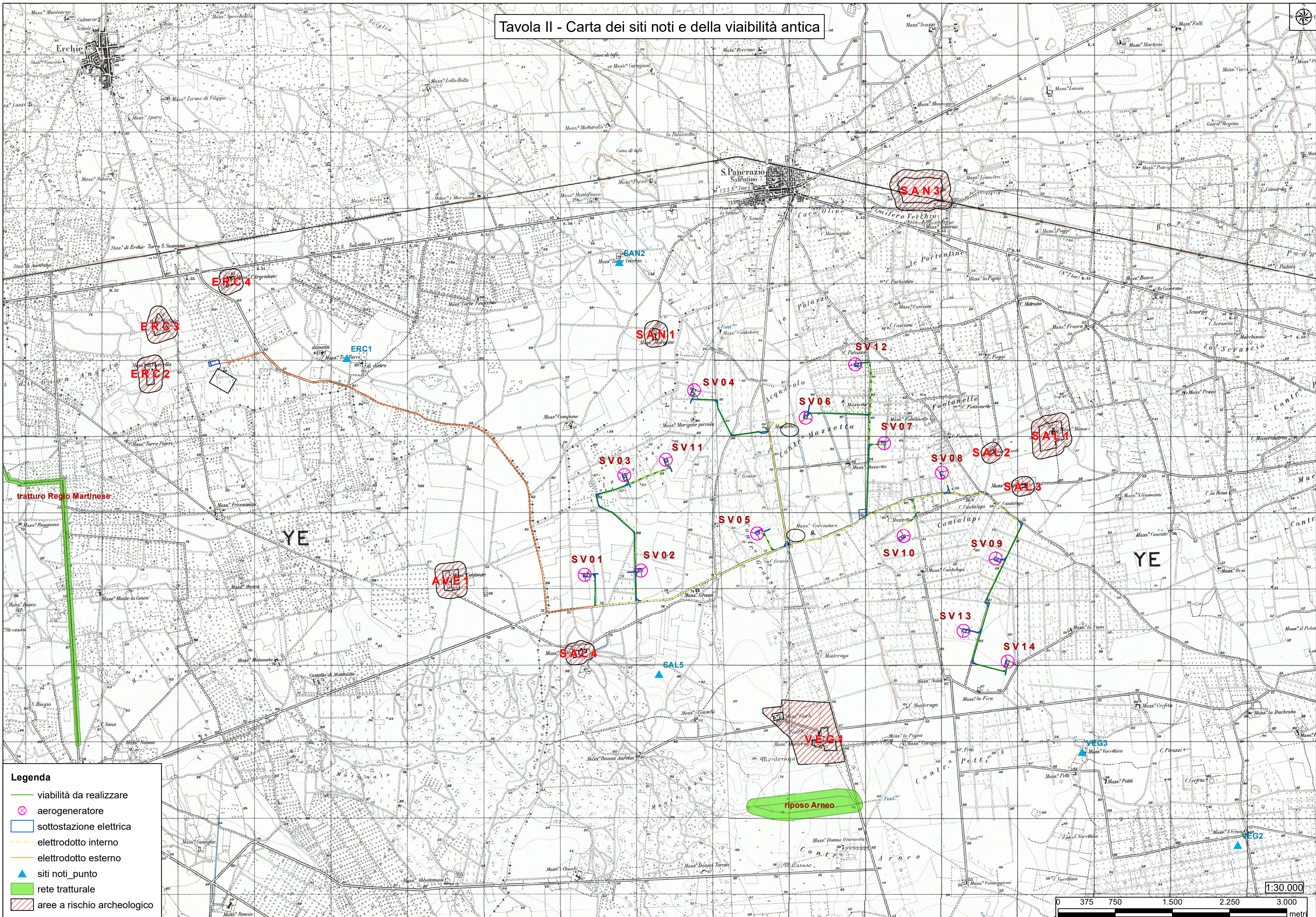


Tavola II - Carta dei siti noti e della viabilità antica

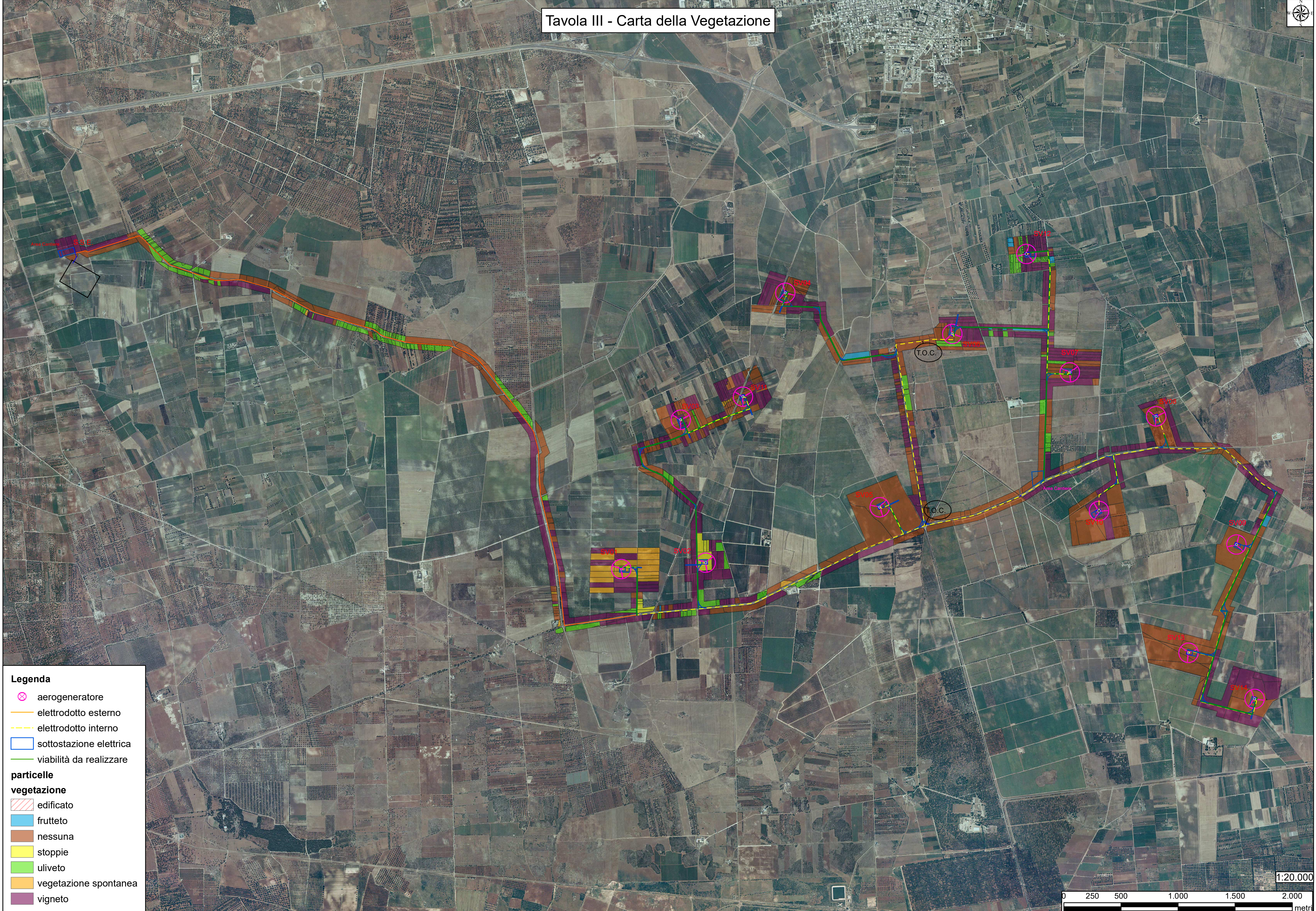


- Legenda**
- viabilità da realizzare
  - ⊗ aerogeneratore
  - sottostazione elettrica
  - elettrودotto interno
  - elettrودotto esterno
  - ▲ siti noti\_punto
  - rete tratturale
  - ▨ aree a rischio archeologico






1:30.000

0 375 750 1.500 2.250 3.000 metri

Tavola III - Carta della Vegetazione





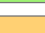




**Legenda**

-  aerogeneratore
-  elettrodotto esterno
-  elettrodotto interno
-  sottostazione elettrica
-  viabilità da realizzare

**particelle**

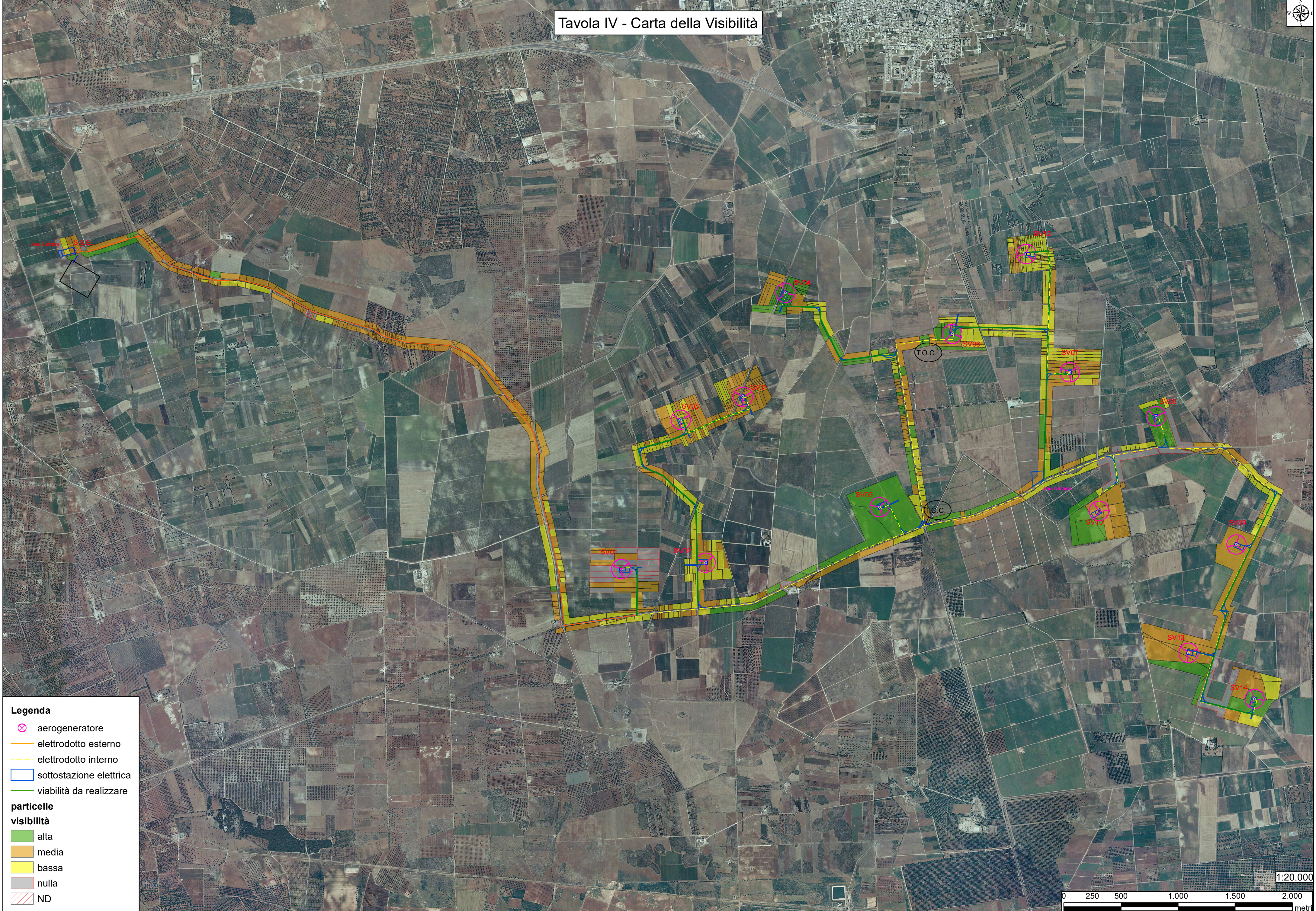
**vegetazione**

-  edificato
-  frutteto
-  nessuna
-  stoppie
-  uliveto
-  vegetazione spontanea
-  vigneto



1:20.000

Tavola IV - Carta della Visibilità



**Legenda**

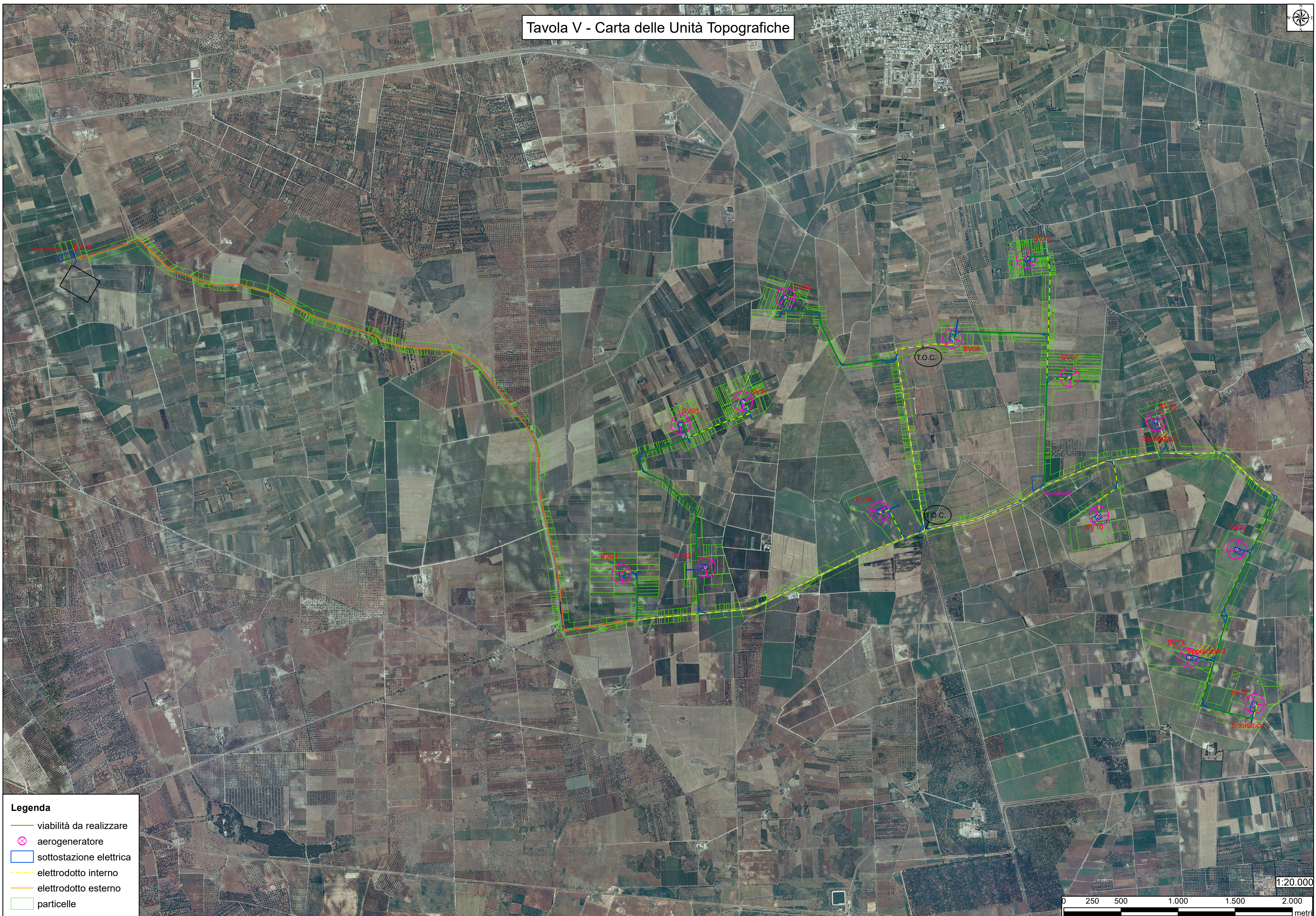
- aerogeneratore
- elettrodotto esterno
- elettrodotto interno
- sottostazione elettrica
- viabilità da realizzare

**particelle visibilità**

- alta
- media
- bassa
- nulla
- ND



Tavola V - Carta delle Unità Topografiche

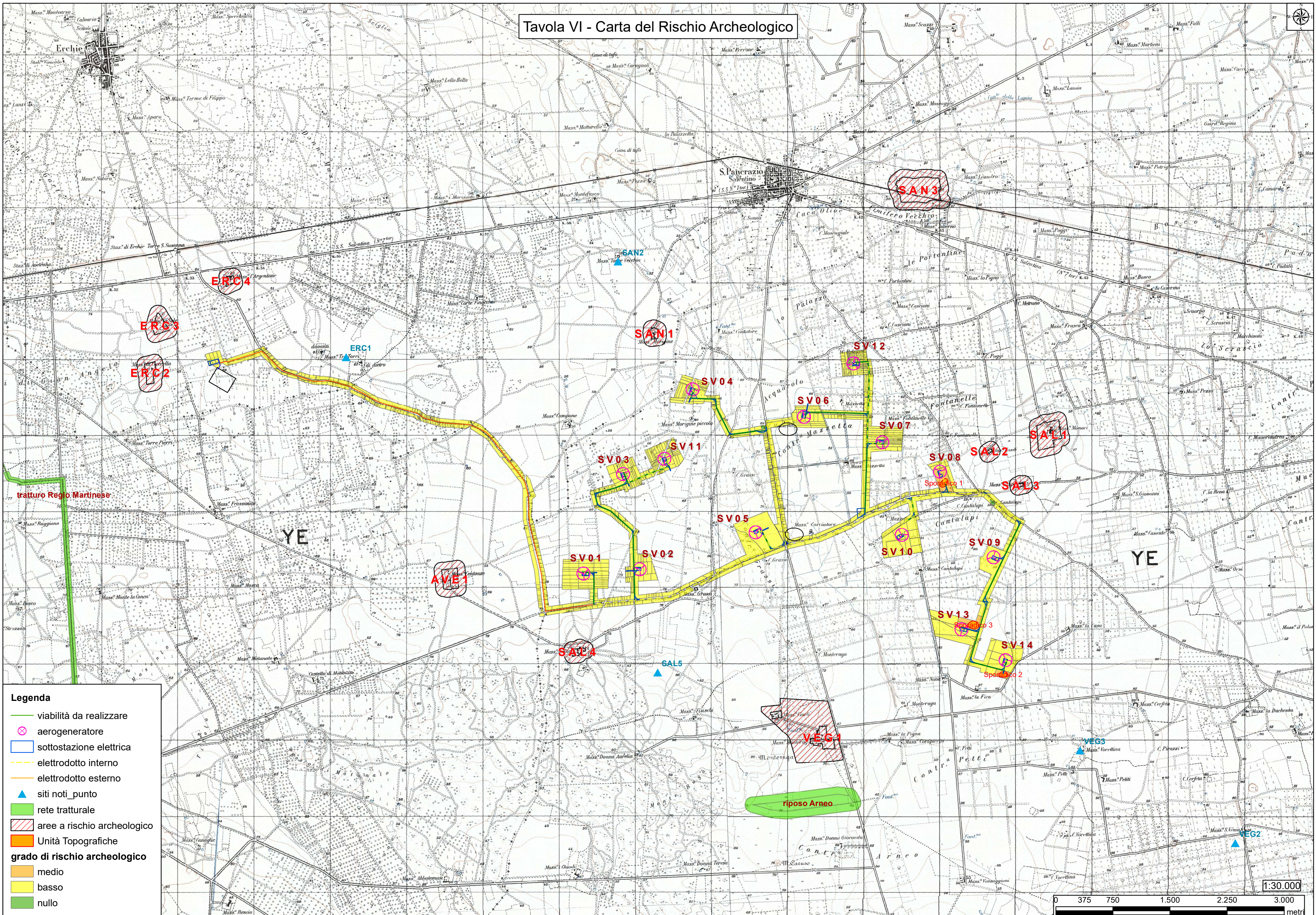


**Legenda**

- viabilità da realizzare
- aerogeneratore
- sottostazione elettrica
- elettrodotto interno
- elettrodotto esterno
- particelle



Tavola VI - Carta del Rischio Archeologico



**Legenda**

- viabilità da realizzare
- aerogeneratore
- sottostazione elettrica
- elettrodotto interno
- elettrodotto esterno
- siti noti\_punto
- rete tratturale
- aree a rischio archeologico
- Unità Topografiche

**grado di rischio archeologico**

- medio
- basso
- nullo

1:30.000

