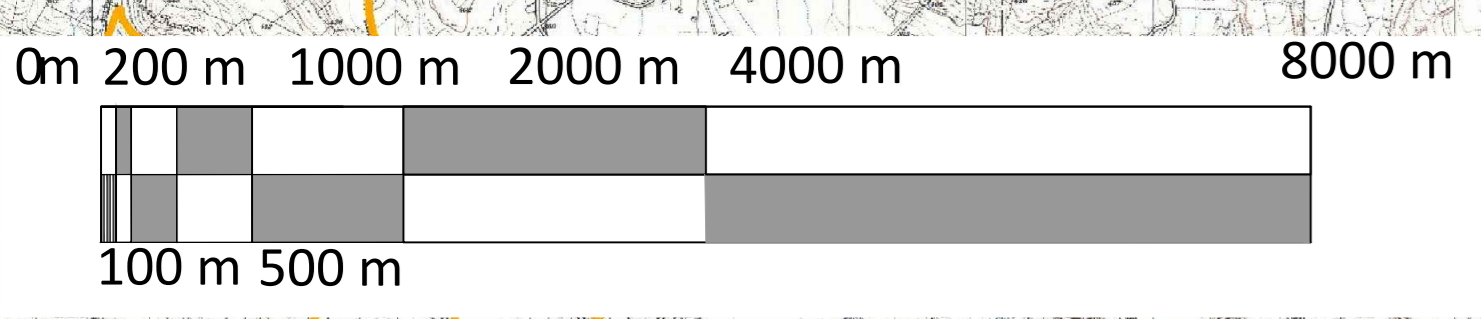
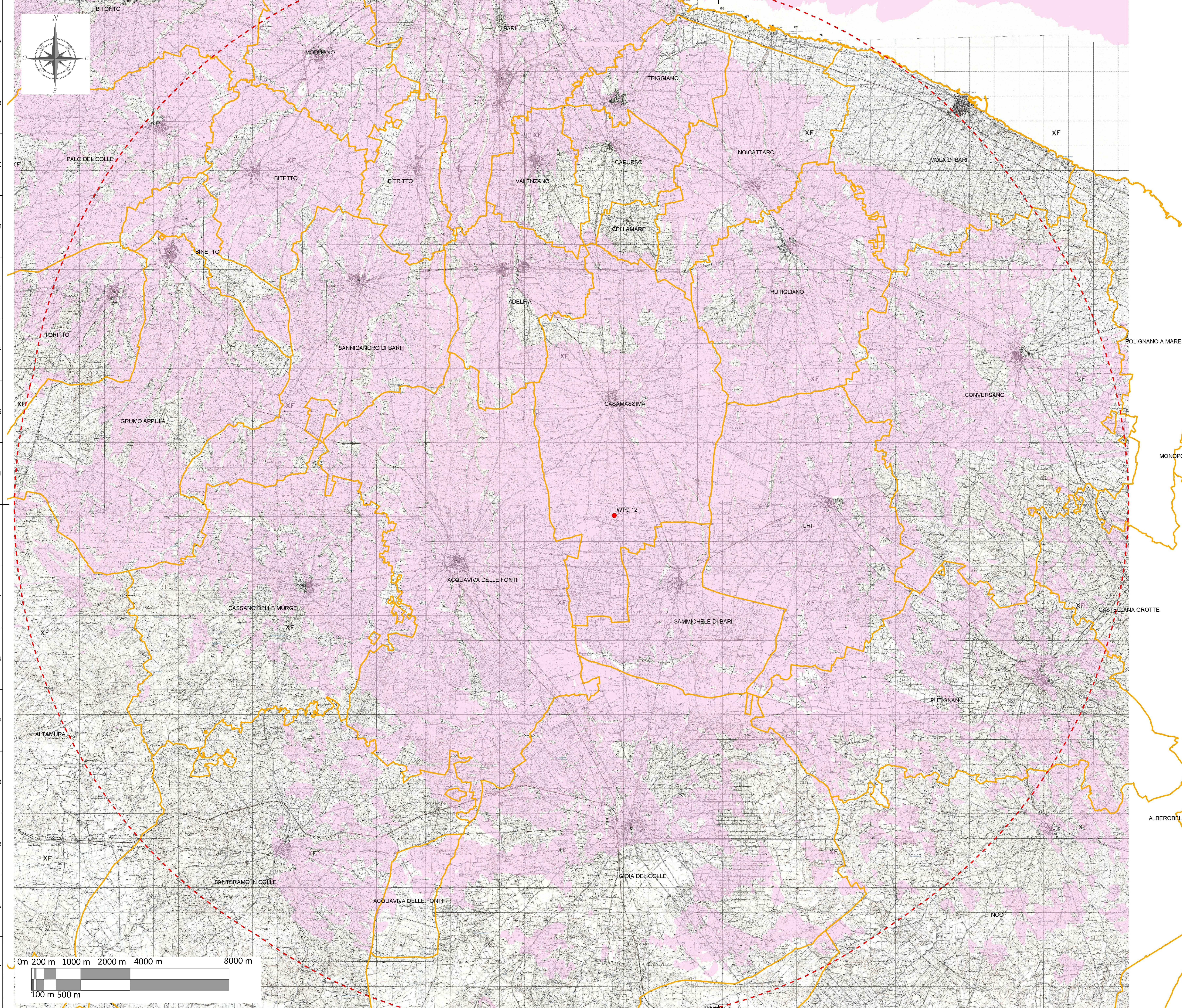
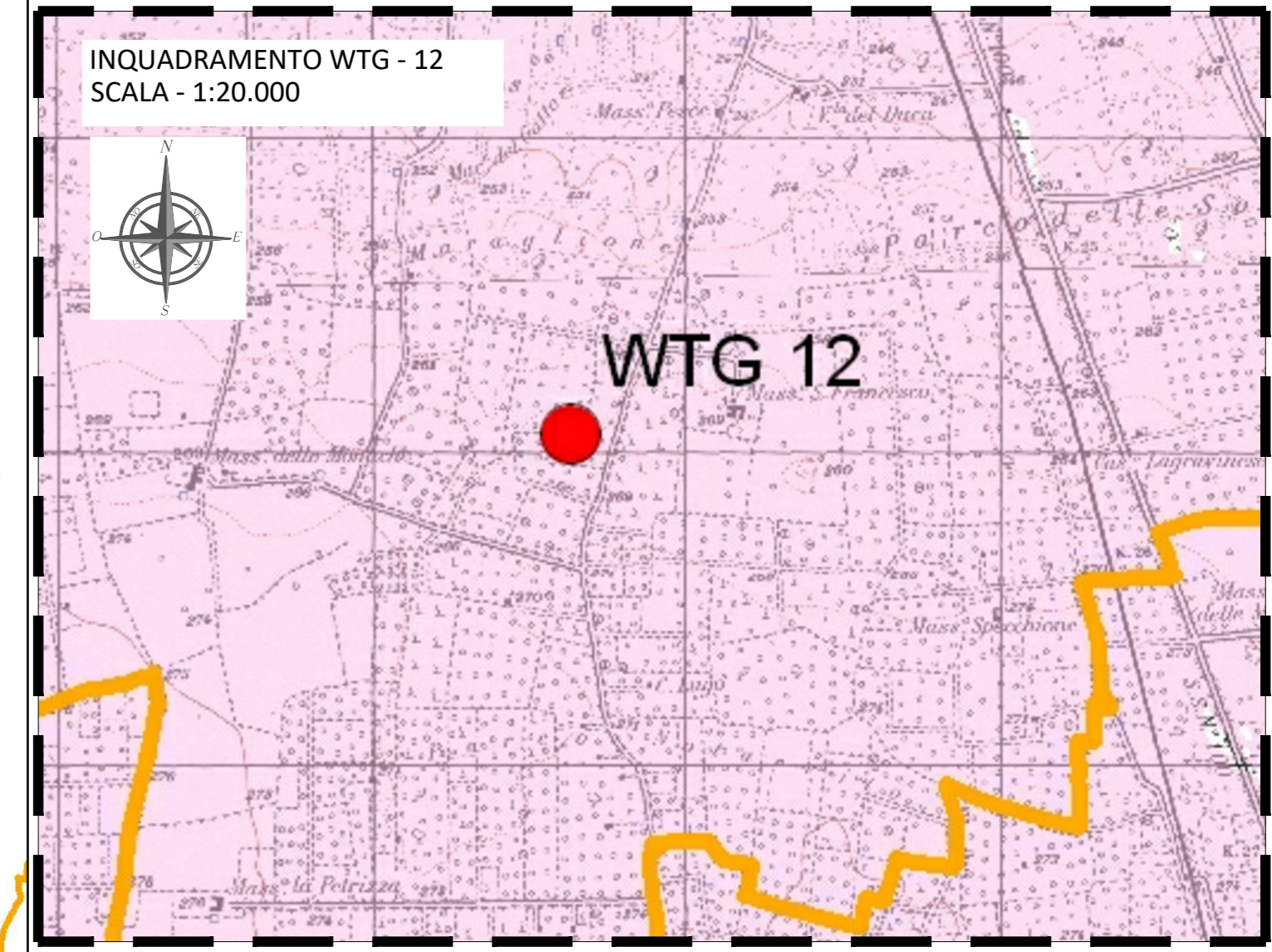


**Legenda**

- WTG 12
- limiti comunali

**INTERVISIBILITA'  
NUMERO AEROGENERATORI VISIBILI**

- 0
- 1



Sistema di Riferimento: UTM-WGS84, FUSO 33N

00	16/12/2020	first issue	SCS ingegneria	SCS ingegneria	SCS ingegneria
REV.	DATE	DESCRIPTION	DESIGNED	CHECKED	APPROVED
PROJECT: IMPIANTO EOLICO DELLA POTENZA COMPLESSIVA 90 MW, COMUNI DI ACQUAVIVA DELLE FONTI (BA) E CASAMASSIMA (BA)			FILE NAME: GRE.EEC.D.26.IT.W.14622.00.065.00		
CLASSIFICATION: WIND FARM		FORMAT: A0	SCALE: 1:50.000	PLOT SCALE: 1:1	SHEET: 11 di 15
UTILIZATION SCOPE: Iter Autorizzativo		TITLE: 8PSY7B1_Elaborato_Grafico_14 - Intervisibilità singoli aerogeneratori			
<b>VALIDATION</b>					
VALIDATED BY:	GROUP:	FUNCTION:	TYPE:	PLANT:	SYSTEM:
CHECKED BY:	GROUP:	FUNCTION:	TYPE:	PLANT:	SYSTEM:
GRE.EEC.D.26.IT.W.14622.00.065.00					