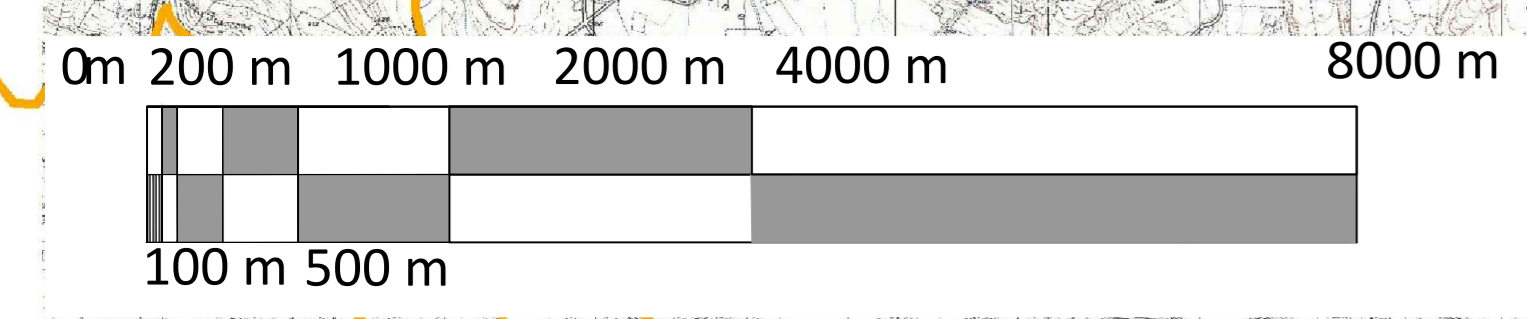
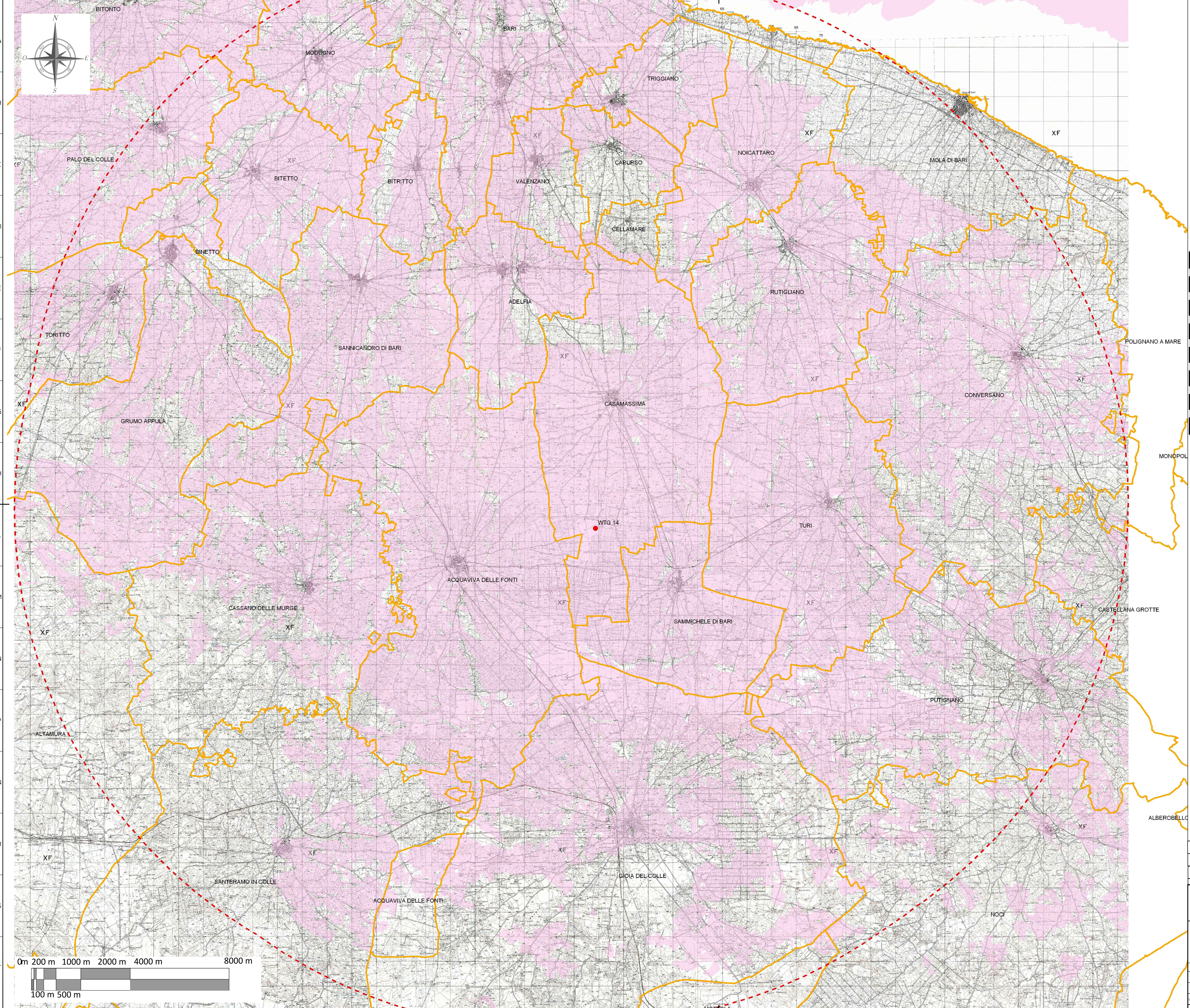
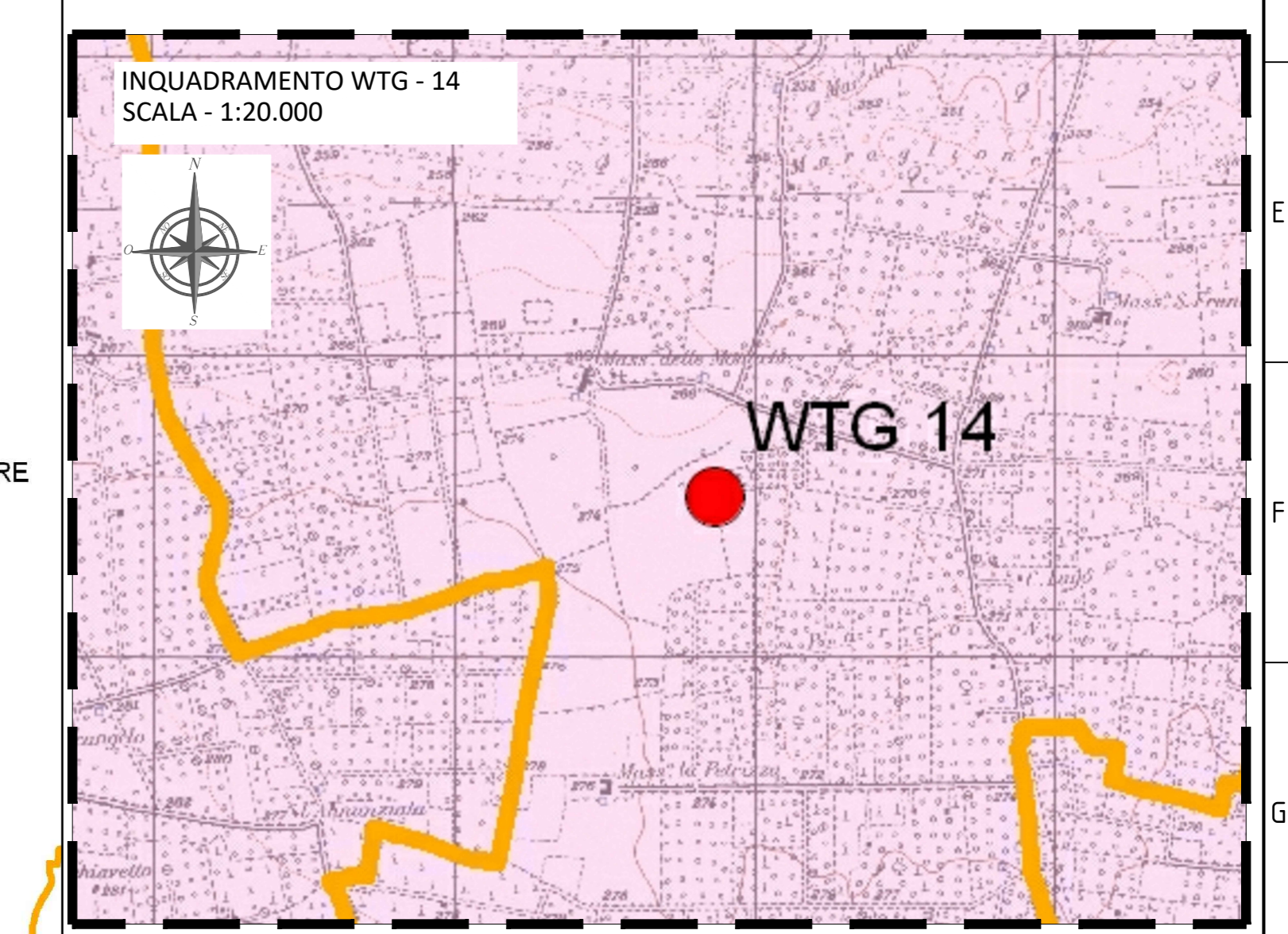


**Legenda**

- WTG 14
- limiti comunali

**INTERVISIBILITA'  
NUMERO AEROGENERATORI VISIBILI**

- 0
- 1



Sistema di Riferimento: UTM-WGS84, FUSO 33N

|   |                                   |   |                |                 |                 |
|---|-----------------------------------|---|----------------|-----------------|-----------------|
| 00  | 16/12/2020                        | first issue   | SCS ingegneria | SCS ingegneria  | SCS ingegneria  |
| REV.  | DATE                              | DESCRIPTION   | C. Caporaso    | C. Loconsole    | A. Seggi        |
|   |                                   |   | PREPARED       | CHECKED         | APPROVED        |
| PROJECT: IMPIANTO EOLICO DELLA POTENZA COMPLESSIVA 90 MW, COMUNI DI ACQUAVIVA DELLE FONTI (BA) E CASAMASSIMA (BA) |                                   |   |                |                 |                 |
| FILE NAME: GRE.EEC.D.26.IT.W.14622.00.065.00  |                                   | CLASSIFICATION: WIND FARM   | FORMAT: A0     | SCALE: 1:50,000 | FLUT SCALE: 1:1 |
| UTILIZATION SCOPE: Iter Autorizzativo   |                                   | TITLE: 8PSY7B1_Elaborato_Grafico_14 - Intervisibilita' singoli aerogeneratori |                |                 |                 |
| VALIDATION  |                                   |   |                |                 |                 |
| VALIDATED BY:   | GROUP:                            | FUNCTION:   | TYPE:          | PLANT:          | SYSTEM:         |
| VERIFIED BY:  | CODE:                             | COUNTRY:  | TCC:           | PLANT:          | SYSTEM:         |
| COLLABORATORS:  | GRE.EEC.D.26.IT.W.14622.00.065.00 |   |                |                 |                 |