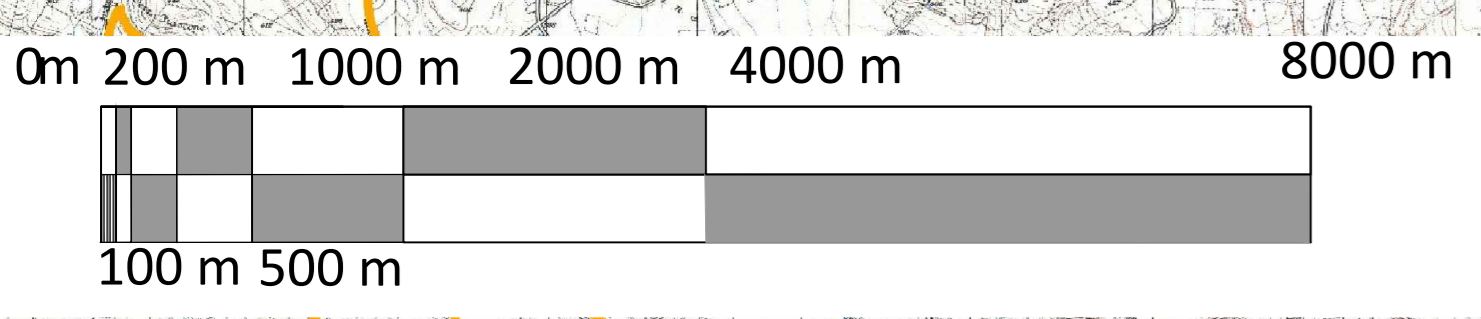
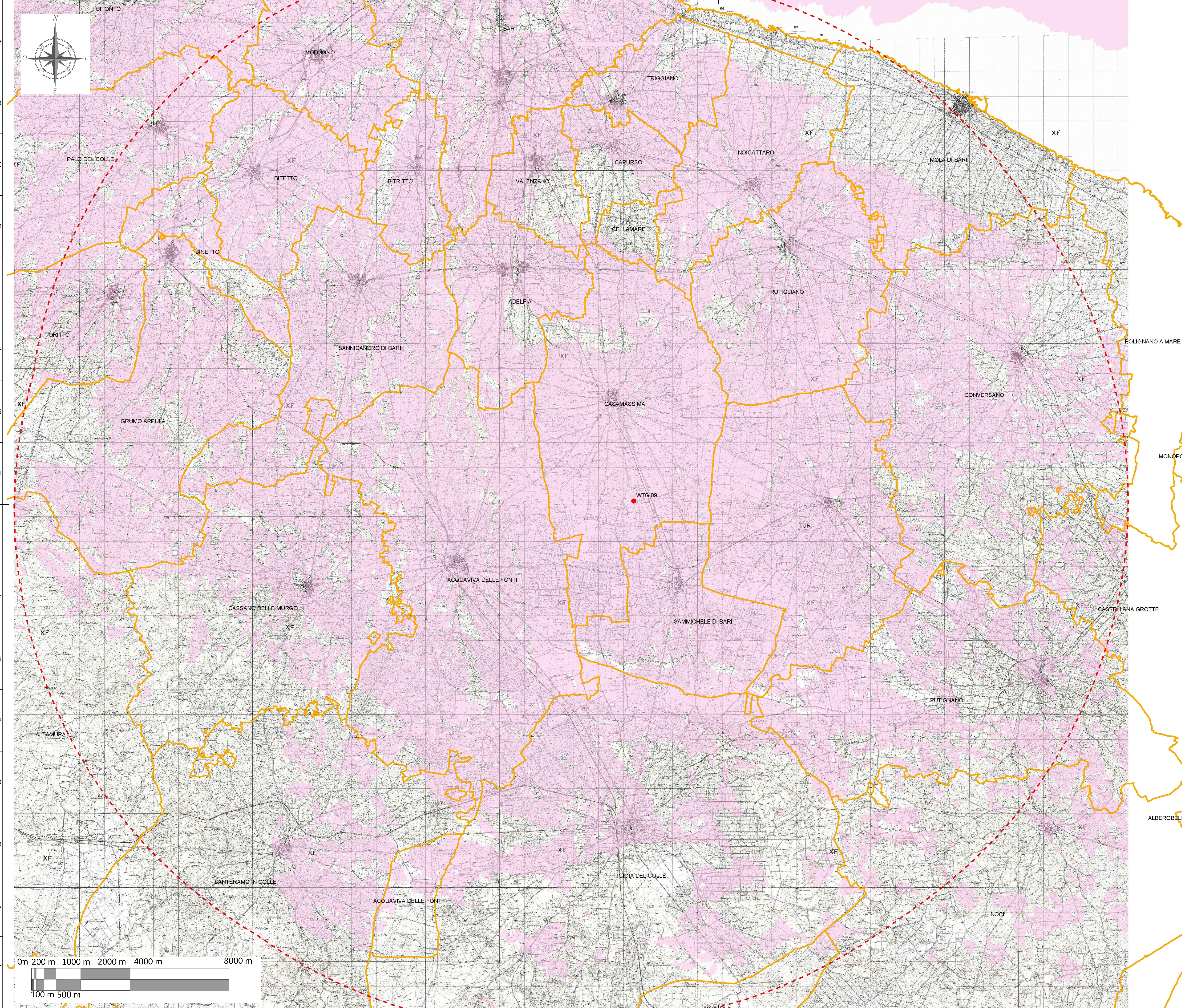
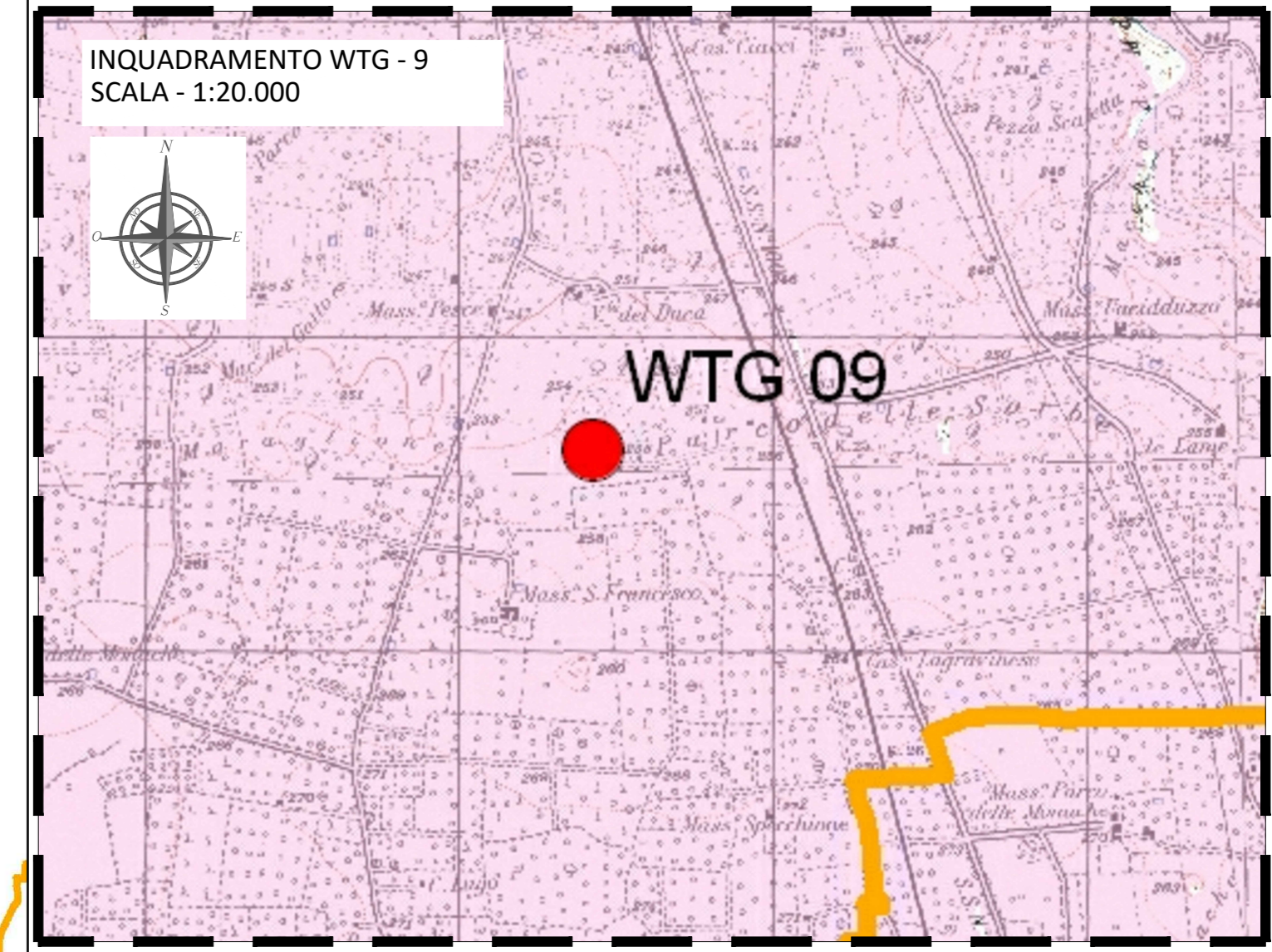


Legenda

- WTG 09
- limiti comunali

**INTERVISIBILITA'
NUMERO AEROGENERATORI VISIBILI**

- 0
- 1



Sistema di Riferimento: UTM-WGS84, FUSO 33N

00	16/12/2020	first issue	SCS ingegneria	SCS ingegneria	SCS ingegneria
REV.	DATE	DESCRIPTION	DESIGNED	CHECKED	APPROVED
PROJECT: IMPIANTO EOLICO DELLA POTENZA COMPLESSIVA 90 MW, COMUNI DI ACQUAVIVA DELLE FONTI (BA) E CASAMASSIMA (BA)			FILE NAME: GRE.EEC.D.26.IT.W.14622.00.065.00		
CLASSIFICATION:	FORMAT:	SCALE:	PLOT SCALE:	SHEET:	
WIND FARM	A0	1:50.000	1:1	8 di 15	
UTILIZATION SCOPE:	TITLE: 8PSY7B1_Elaborato_Grafico_14 - Intervisibilita' singoli aerogeneratori				
Iter Autorizzativo					
VALIDATION					
VALIDATED BY:	GROUP:	FUNCTION:	TYPE:	SECTOR:	COUNTRY:
VERIFIED BY:	CODE:	PLANT:	SYSTEM:	PROGRESSIVE:	REVISION:
GRE.EEC.D.26.IT.W.14622.00.065.00					