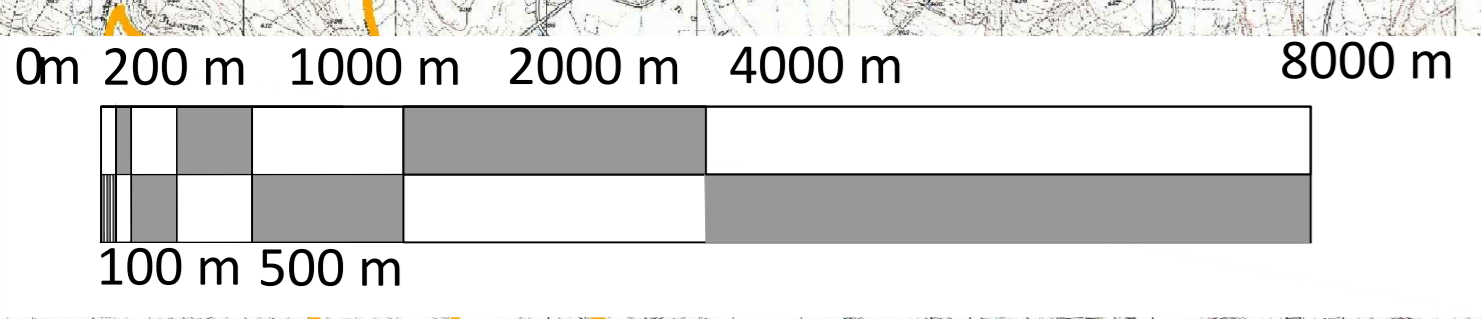
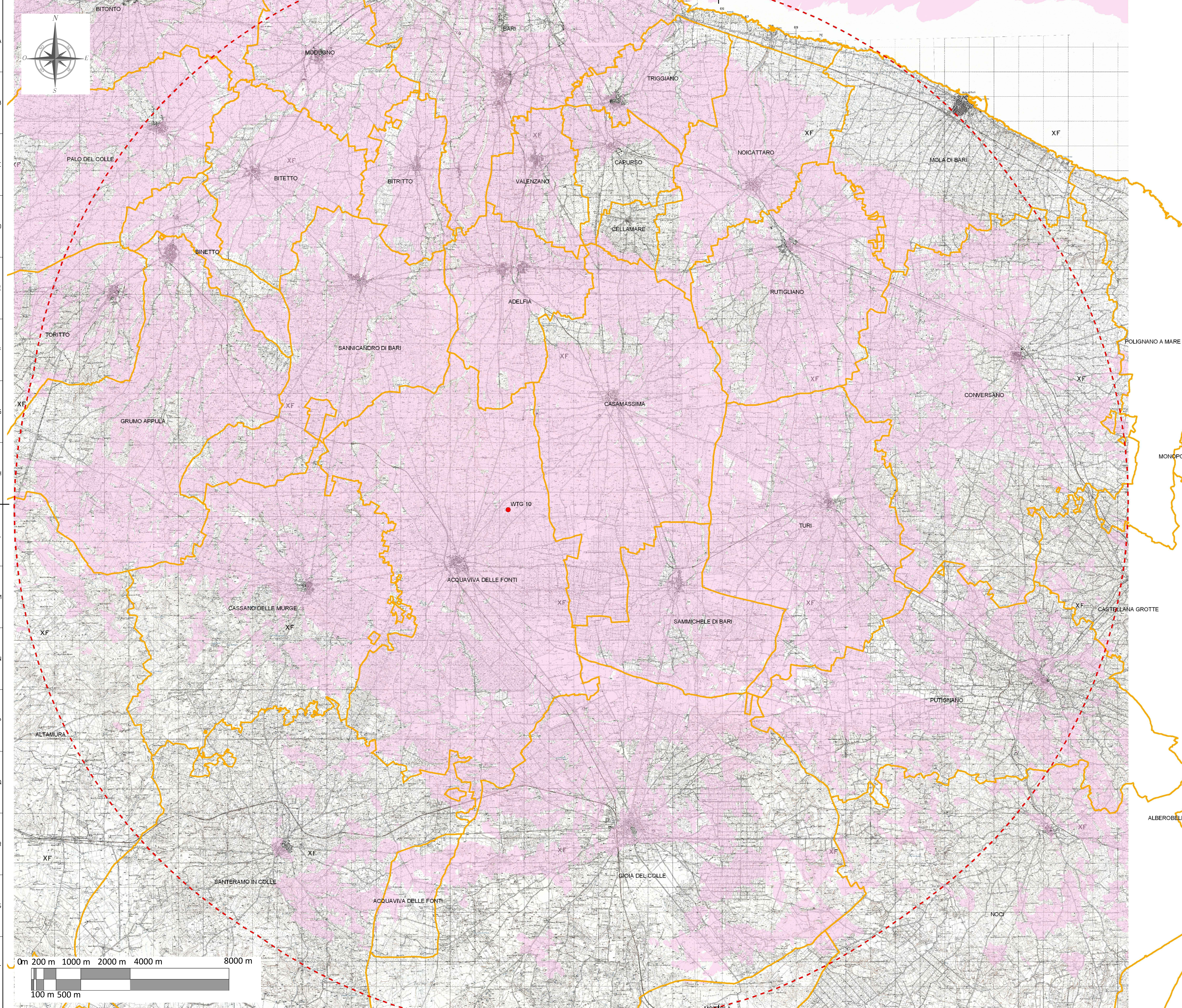
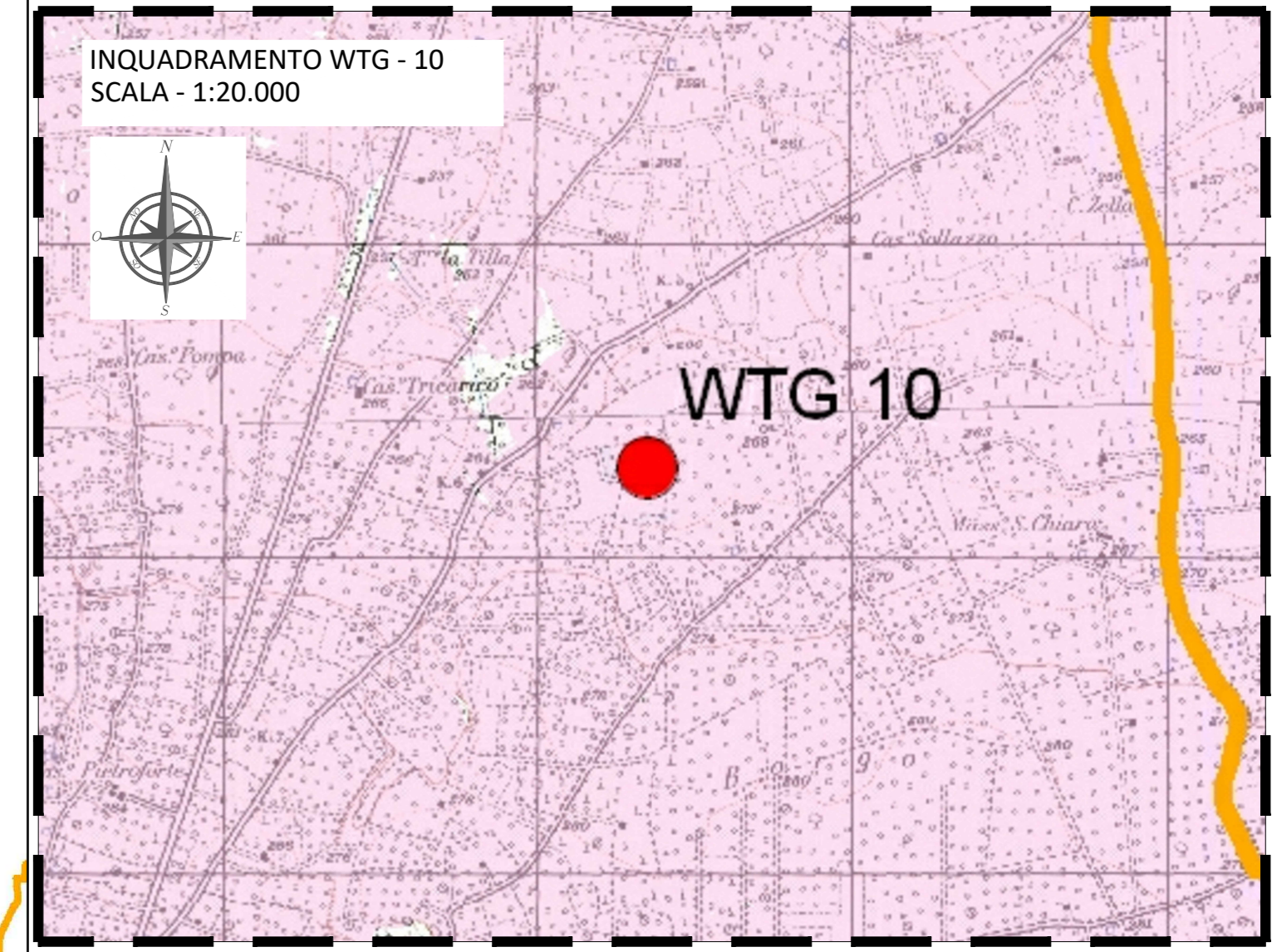


**Legenda**

- WTG 10
- limiti comunali

**INTERVISIBILITA'  
NUMERO AEROGENERATORI VISIBILI**

- 0
- 1



Sistema di Riferimento: UTM-WGS84, FUSO 33N

00	16/12/2020	first issue	SCS ingegneria	SCS ingegneria	SCS ingegneria
REV.	DATE	DESCRIPTION	C. Caporaso	C. Loconsole	A. Seggi
			PREPARED	CHECKED	APPROVED
PROJECT: IMPIANTO EOLICO DELLA POTENZA COMPLESSIVA 90 MW, COMUNI DI ACQUAVIVA DELLE FONTI (BA) E CASAMASSIMA (BA)					
FILE NAME: GRE.EEC.D.26.IT.W.14622.00.065.00			FORMAT: A0	SCALE: 1:50,000	PLOT SCALE: 1:1
CLASSIFICATION: WIND FARM			UTILIZATION SCOPE: Iter Autorizzativo	TITLE: 8PSY7B1_ElaboratoGrafico_14	SHEET: 9 di 15
VALIDATION					
VALIDATED BY:	GROUP:	FUNCTION:	TYPE:	ESKEL:	COUNTRY:
VERIFIED BY:	CODE:	PLANT:	SYSTEM:	PROGRESSIVE:	REVISION:
GRE.EEC.D.26.IT.W.14622.00.065.00					