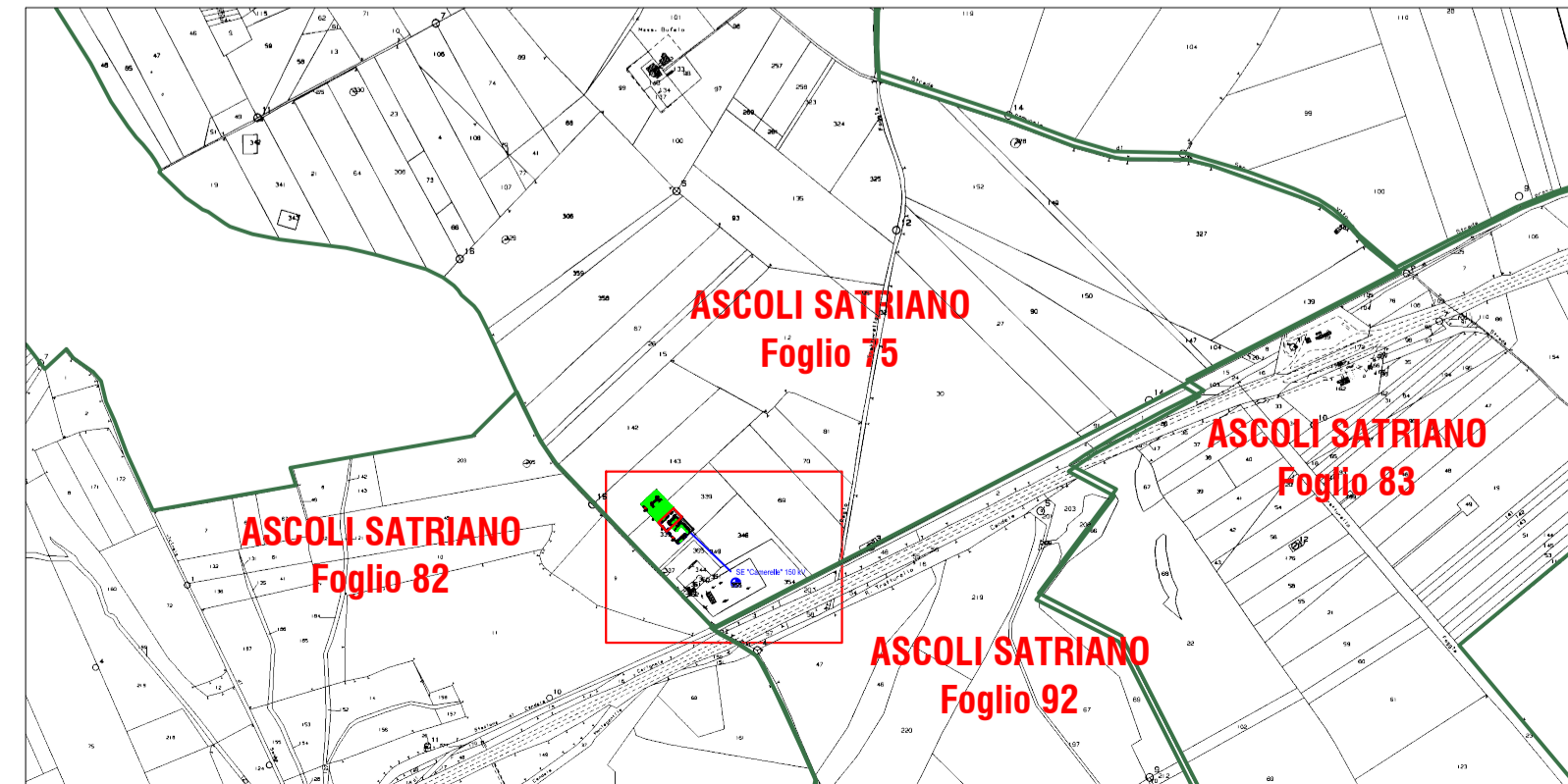




KEY MAP



LEGENDA

-  SE "Camerelle" 150 kV
-  Recinzione SSE MT/AT Cerignola
-  SSE MT/AT Candela (Enel Green Power)
-  SSE MT/AT altro produttore
-  Cavidotto interrato 150 kV

REV.	DATE	DESCRIPTION	PREPARED	CHECKED	APPROVED
00	2020.11.20	Prima emissione	N. Novati	M. Terzi	L. Lavazza
CONTRACTORS LOGO		PROJECT: IMPIANTO EOLICO DI CERIGNOLA			
		FILE NAME: GRE.EEC.D.24.IT.W.14670.00.025.00 - Inquadrimento SSE su catastrale			
		CLASSIFICATION: PUBLIC	FORMAT: A1	SCALE: 1:1000	PLOT SCALE: 1:1
<b>EGP VALIDATION</b>		UTILIZATION SCOPE: BASIC DESIGN	TITLE: Inquadrimento SSE su catastrale Stato di progetto		
VALIDATED BY: Pansini		EGP CODE			
VERIFIED BY:	GROUP: GRE		FUNCTION: EEC	TYPE: D	ISSUER: 24
COLLABORATORS:		COUNTRY: IT	PLANT: W	SYSTEM: 14670	PROGRESSIVE: 0002500
<small>This document is property of Enel Green Power SpA. It is strictly forbidden to reproduce this document, in whole or in part, and to provide to others any related information without the previous written consent by Enel Green Power SpA.</small>					