

Progetto

- Layout
- Buffer 10 km

Opere civili

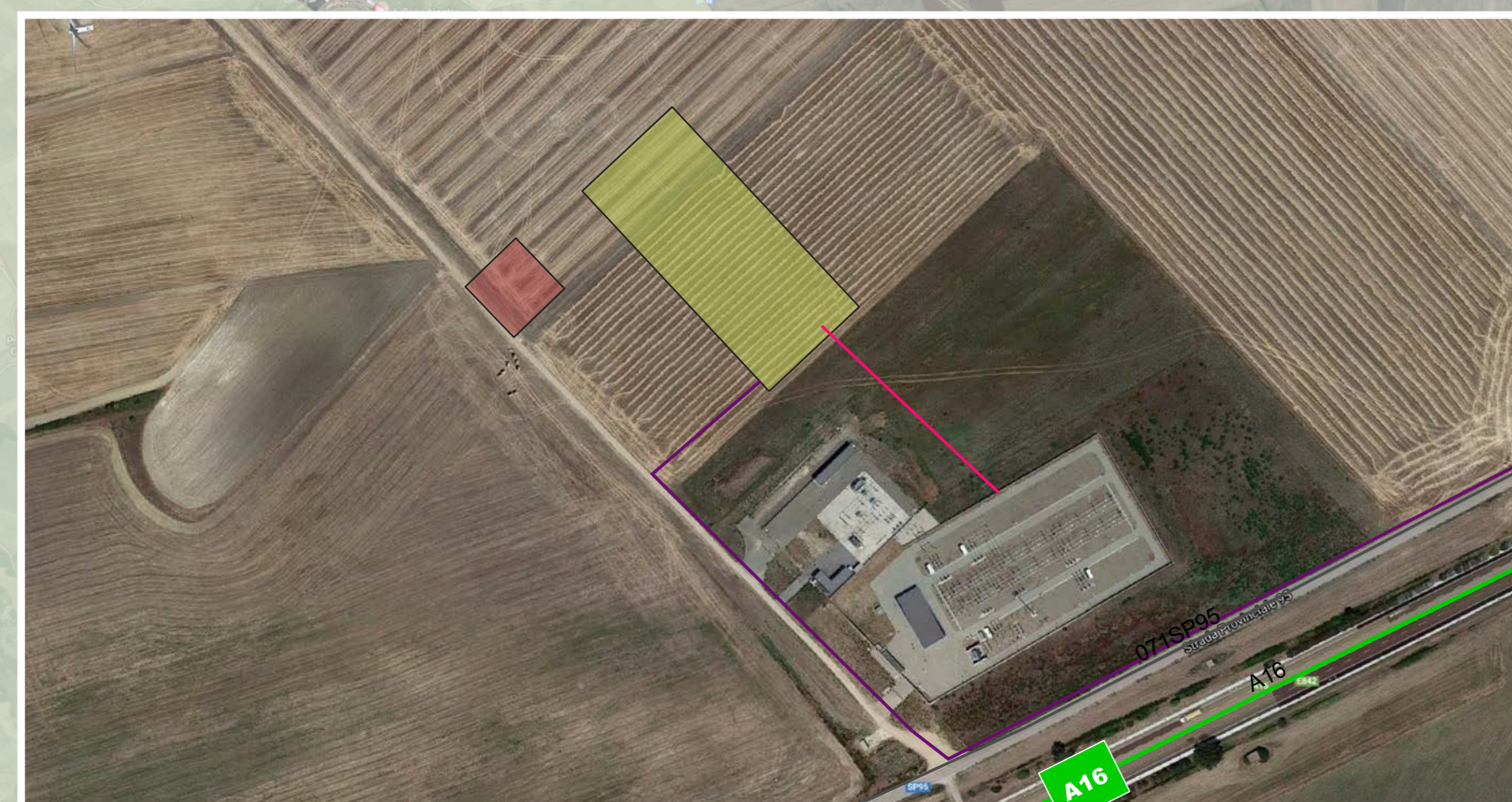
- Cavidotti MT
- Cavidotti AT
- Piazzole
- Strade
- Stazione di utenza
- Site camp

Analisi territoriale

- Aree soggette a vincolo idrogeologico ex RD 3267/23 (PPTR)

Ortofoto

1000 0 1000 2000 m



0		Prima emissione		GZU		LZU		GOS	
REV	DATE	DESCRIPTION		PREPARED	CHECKED	APPROVED			
CONTRACTOR LOGO		PROJECT		IMPianto EOLICO DI CERIGNOLA					
Stantec		FILE NAME		GREEC0201W146700_ambiente_01.dwg					
enel		CLASSIFICATION	FORMAT	SCALE	PLOT SCALE	SHEET			
Green Power		PUBLIC	A0	1:30000	1:1	1 of 1			
Engineering & Construction		UTILIZATION SCOPE:		BASIC DESIGN		Carta del Vincolo Idrogeologico			
EGP VALIDATION		TITLE:							
VALIDATED BY: Vignone		EGP CODE		GREEC0201W146700_0006700					
VERIFIED BY: Spacchia	GROUP: Landis	FUNCTION: Landis	TYPE: Landis	ISSUER: Landis	COUNTRY: Landis	PLANT: Landis	SYSTEM: Landis	PROGRESSIVE: Landis	REVISION: Landis