

### Impianto per la produzione di energia da fonte eolica da 92,4 MW "Brunco e niada" - Comuni di Ballao e Armungia (SU)

PROGETTO DEFINITIVO

Codice elaborato: AU-WIND001.ELB005e-1    Formato: A1

Planimetria, Profilo e Sezioni area di deposito temporaneo n°1    Scala: 1:1'000/1:100

PROPRONTE

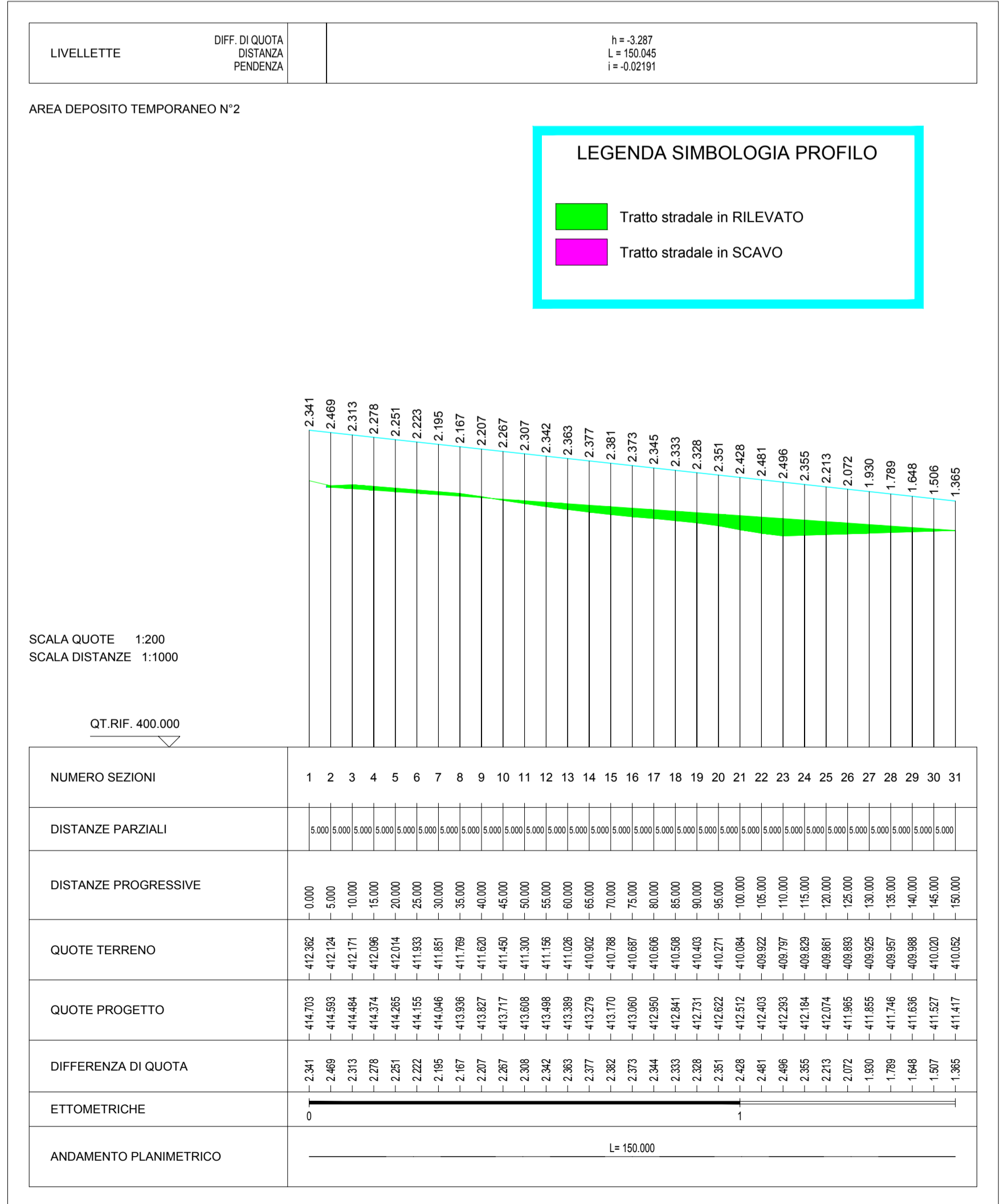
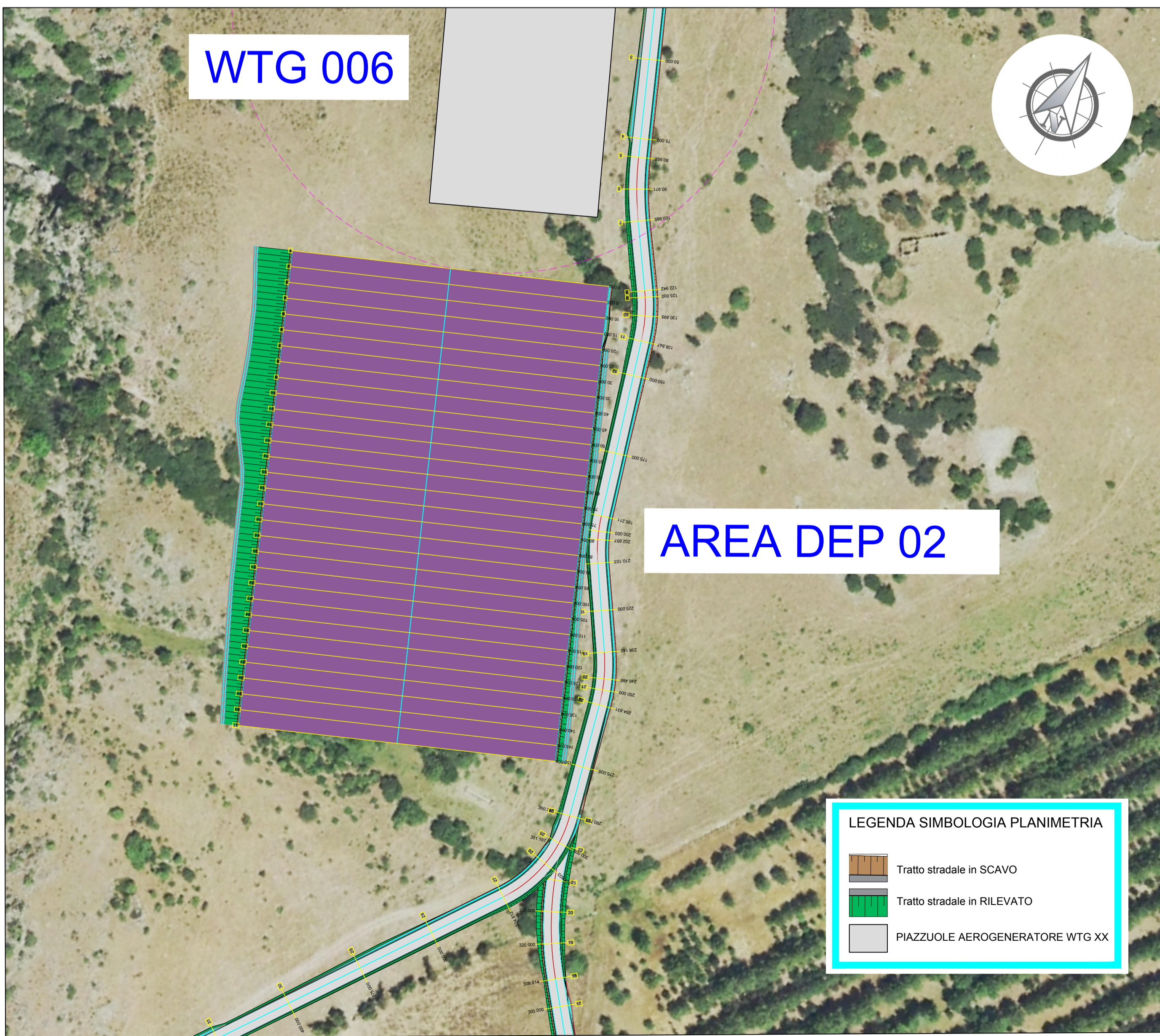
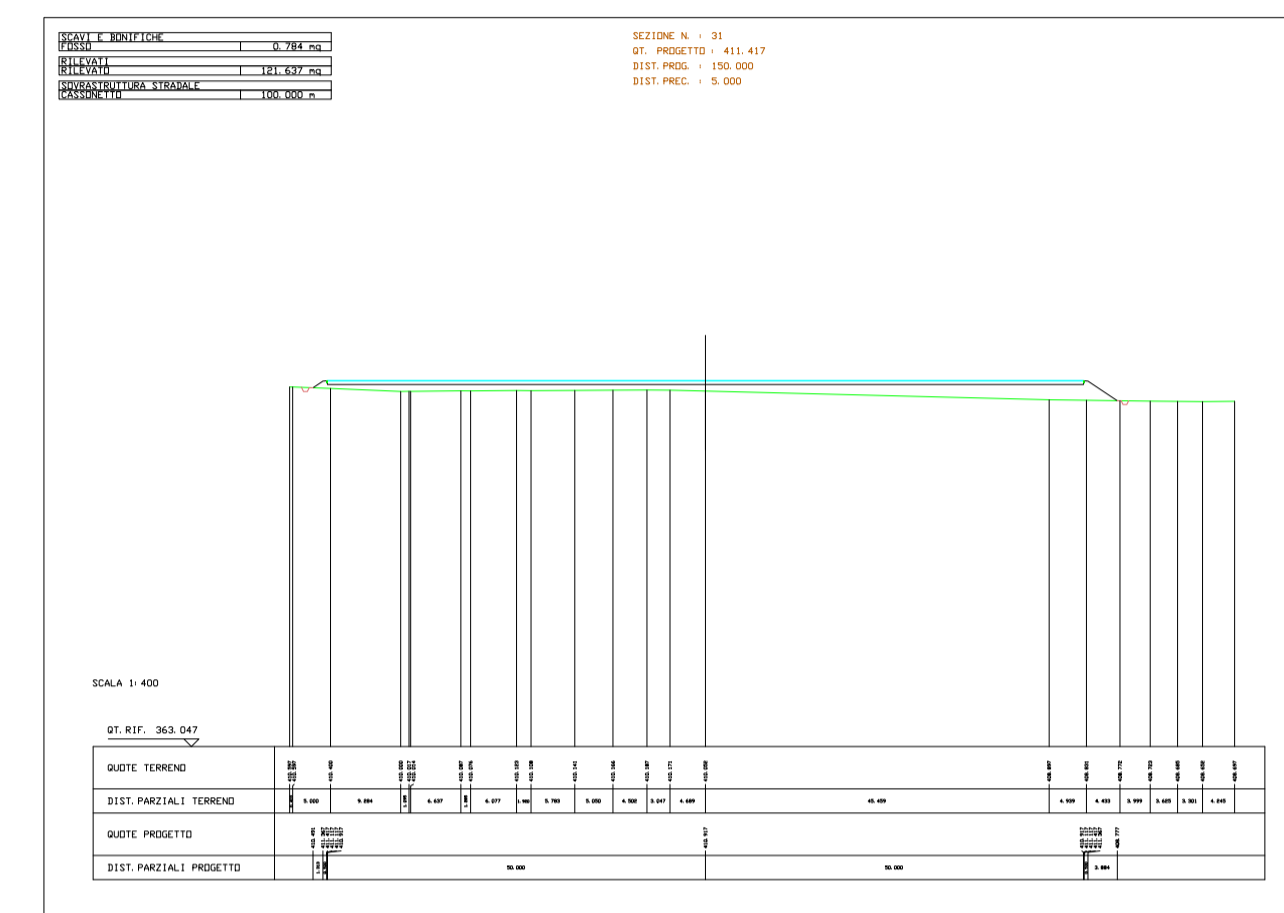
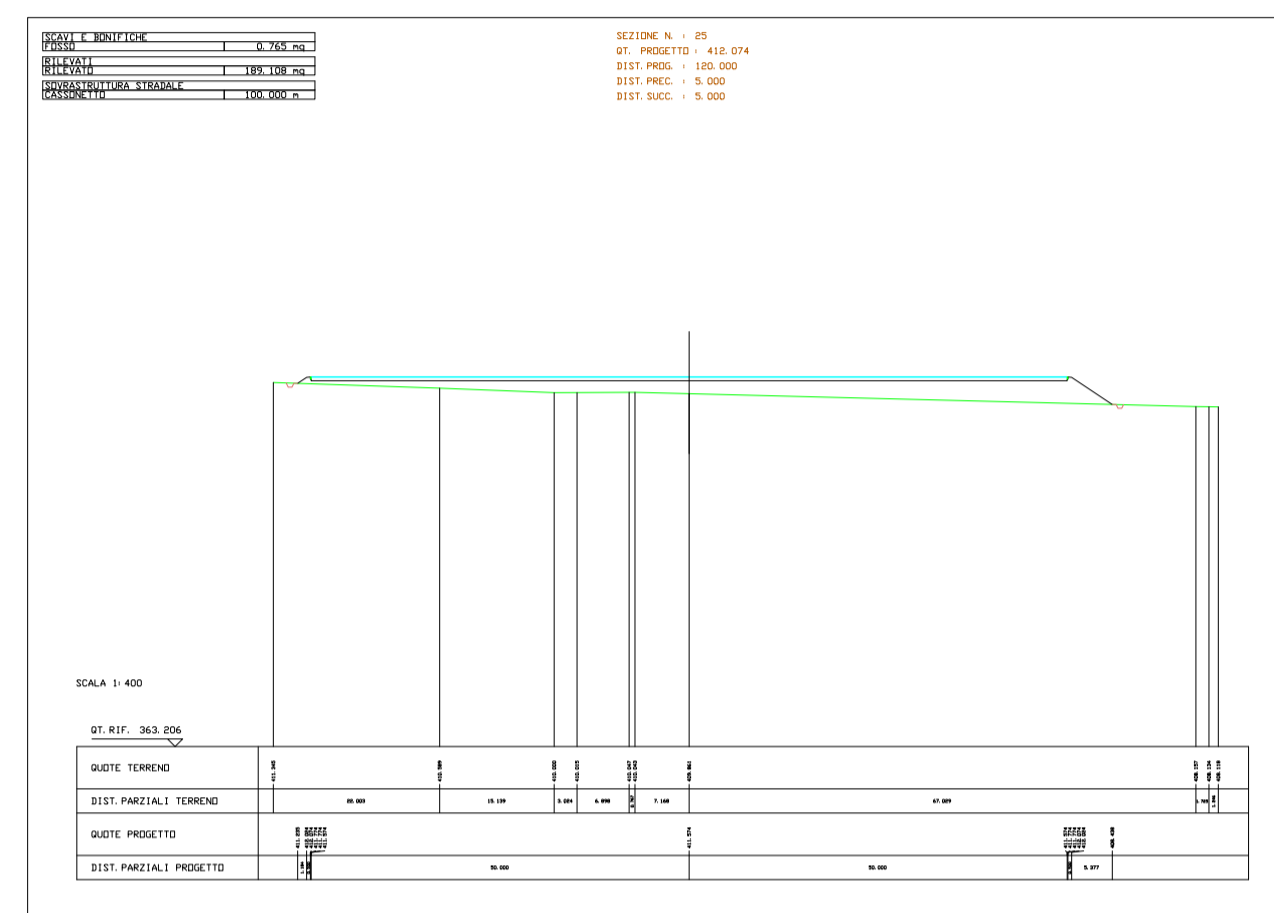
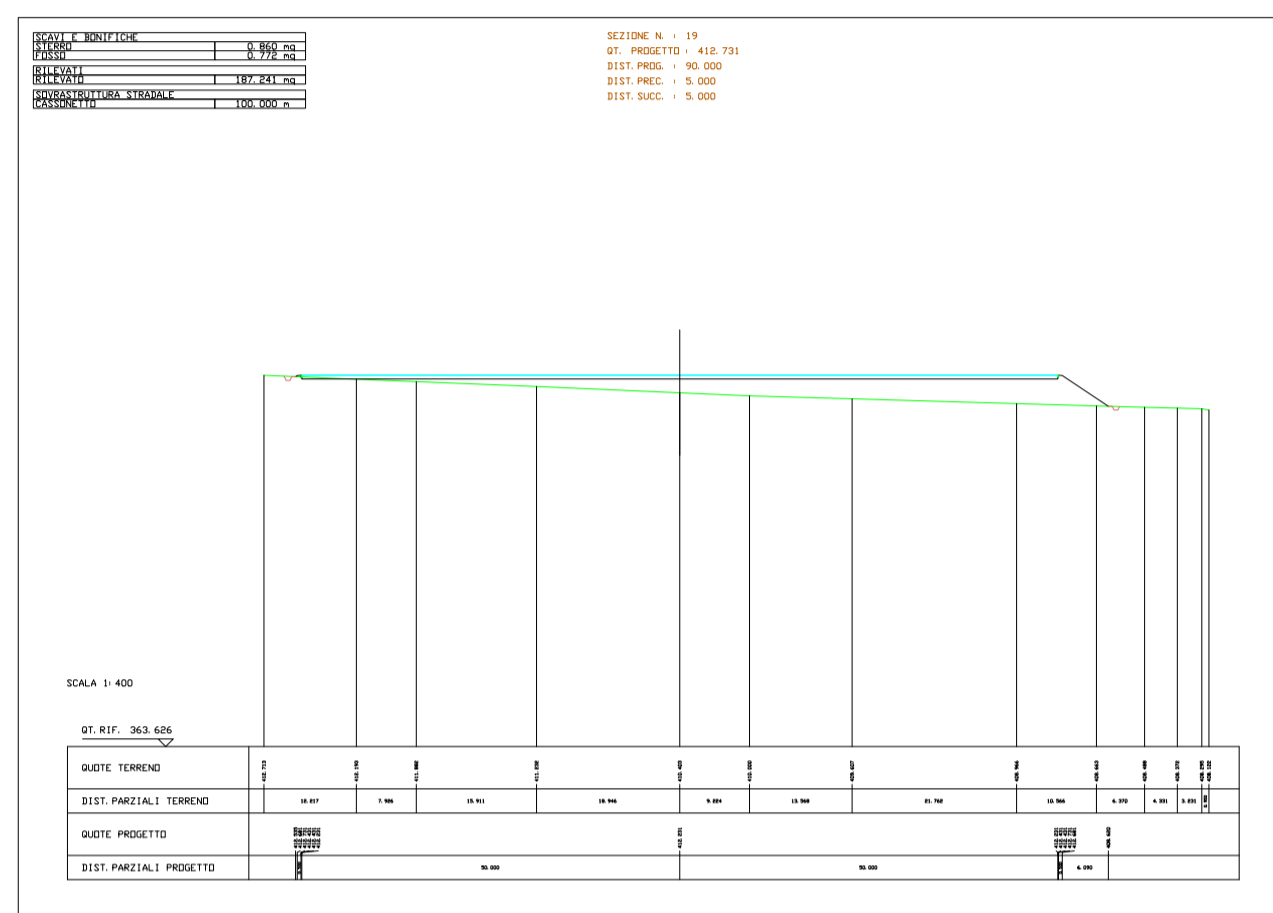
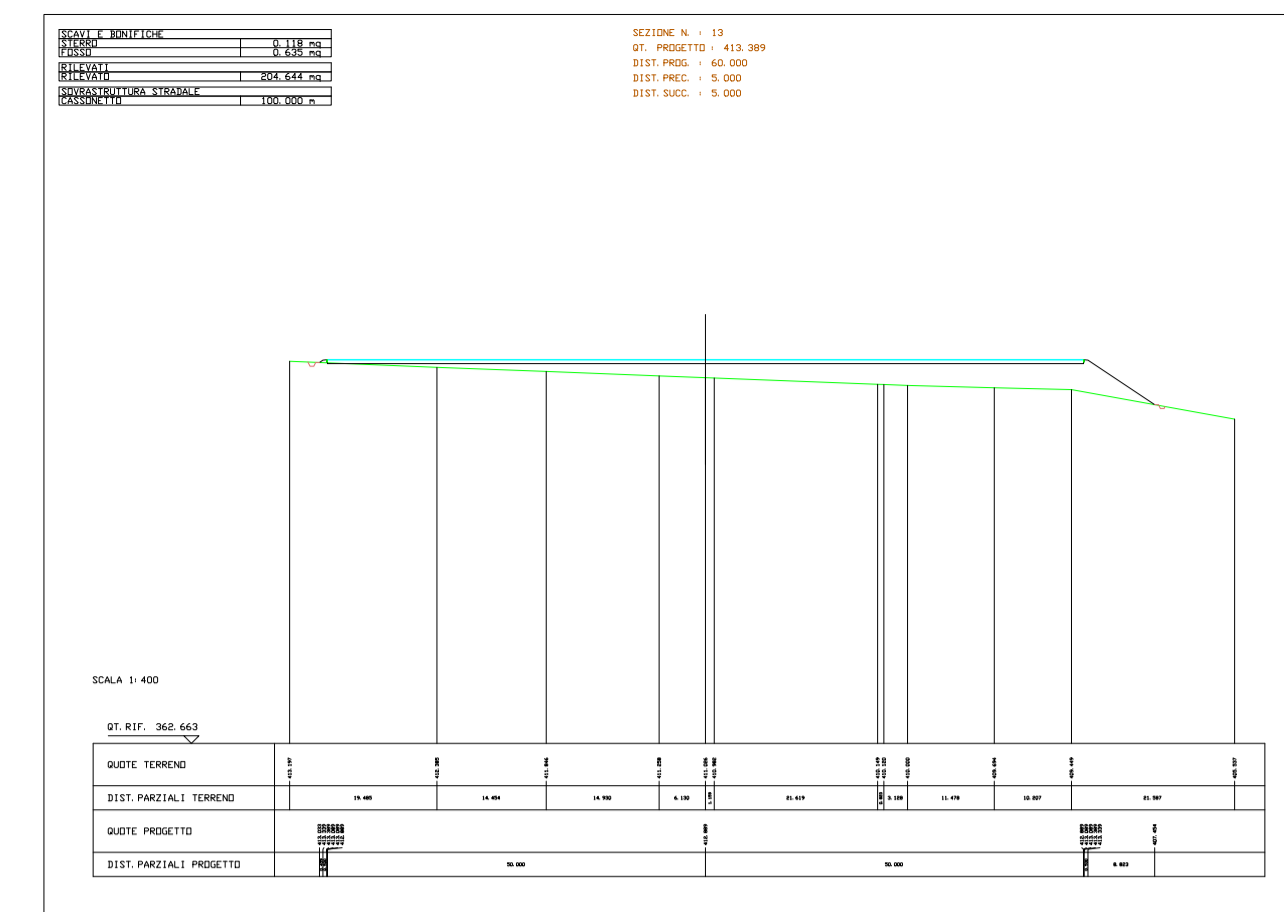
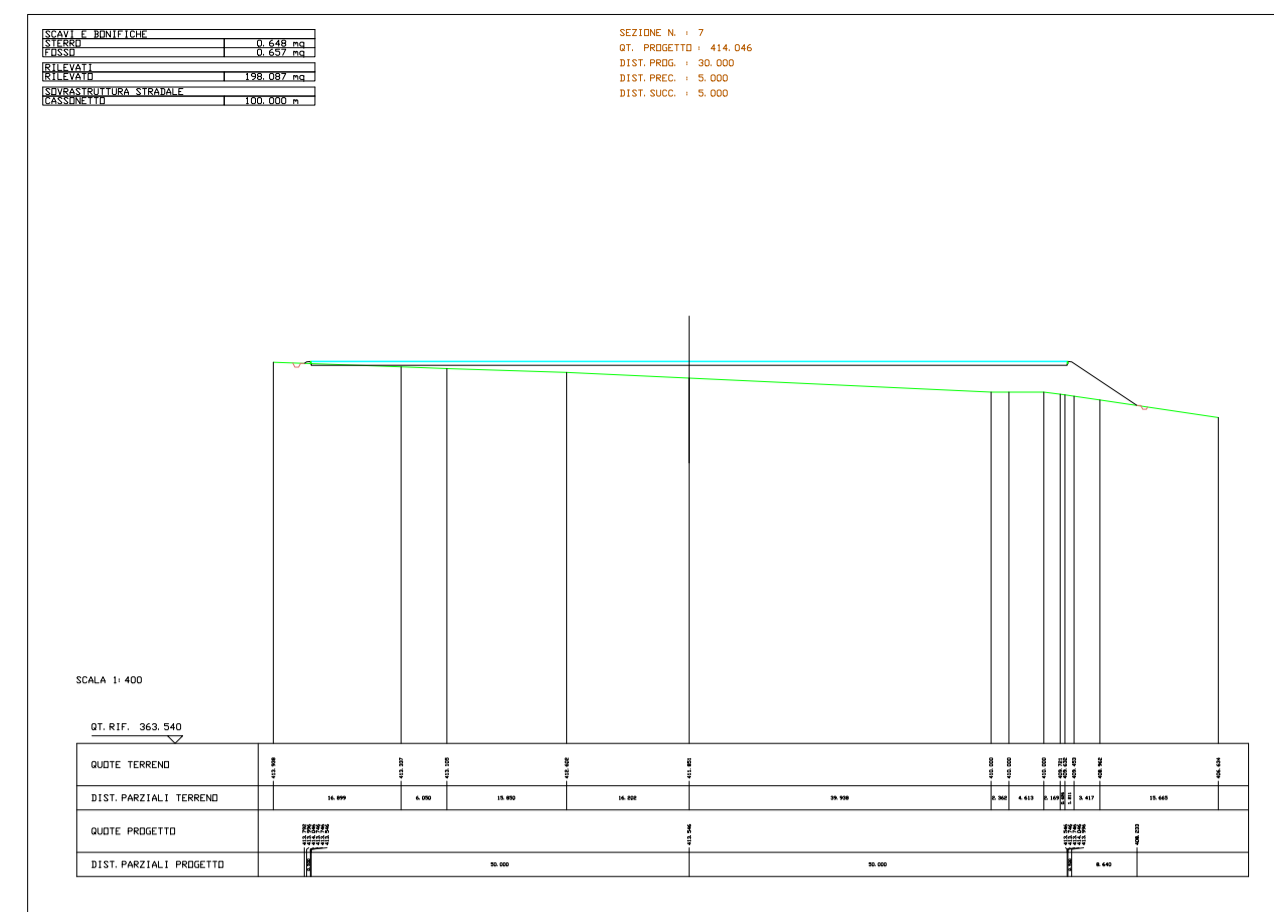
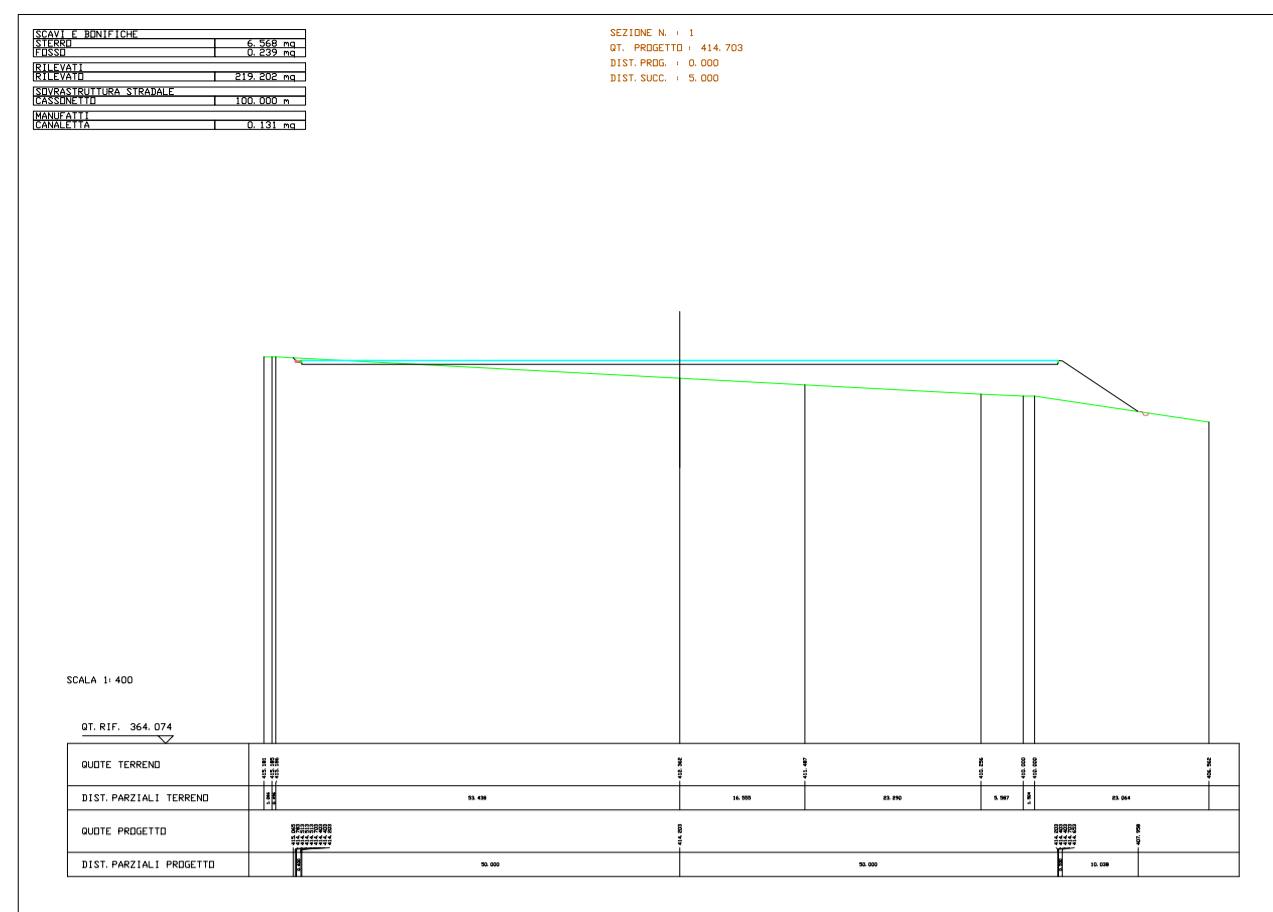
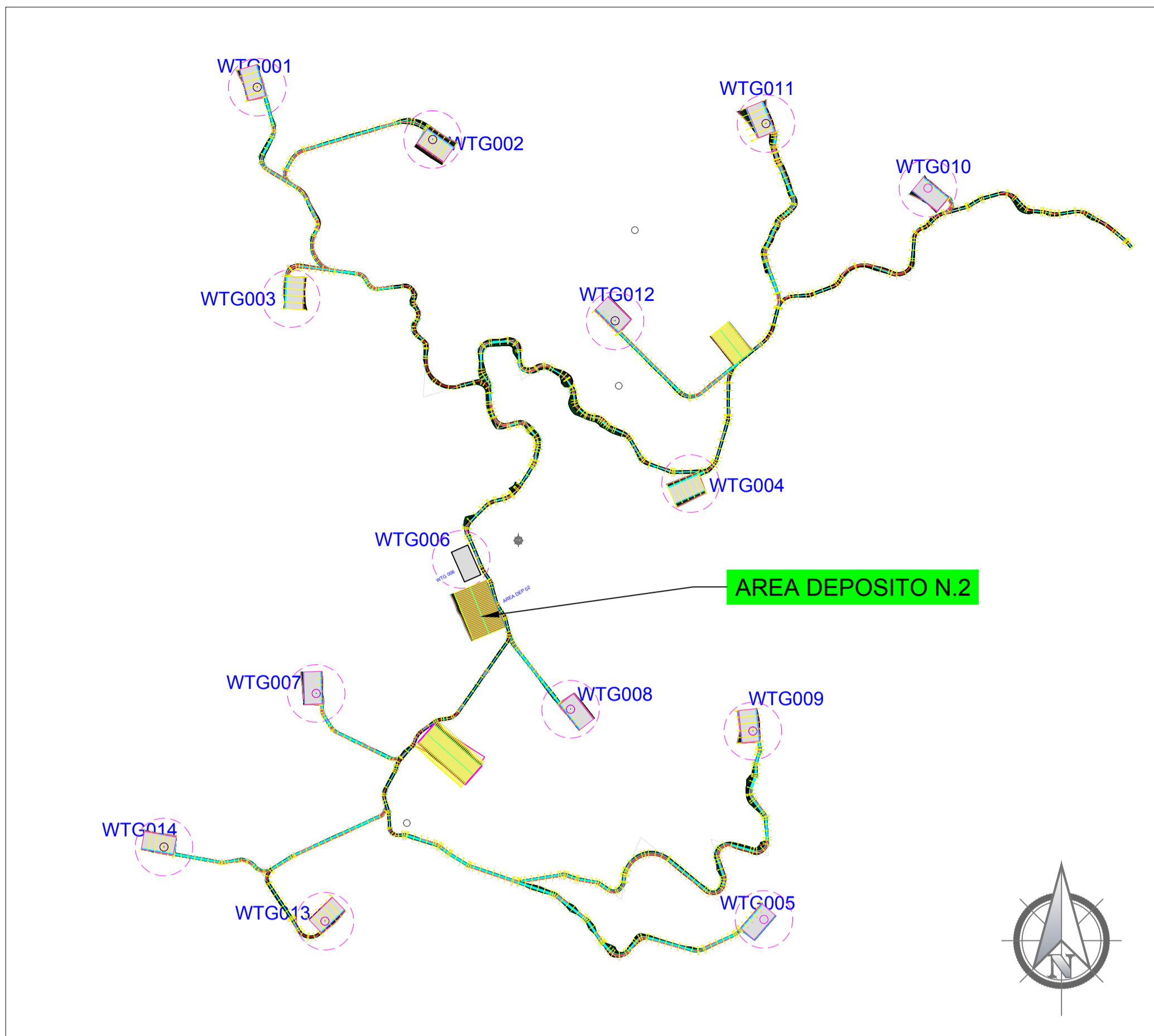
Powering renewables.

Econergy Project 2 S.r.l.  
via Alessandro Manzoni n. 30  
20121 MILANO

PROGETTAZIONE	GRUPPO DI LAVORO
 Queequeg Renewables, Ltd. Unit 3.21 1110 Great West Road TW8 OGP, London	Ing. Ing. Ing. Geol.
TIMBRO REDATTORE	TIMBRO PROPONENTE

#### Revisioni

Rev.	Data	DESCRIZIONE	ELABORATO	VERIFICATO	APPROVATO
0	11/20	EMISSIONE PER VALIDAZIONE	XX		



**Impianto per la produzione di energia da fonte eolica da 92,4 MW "Brunco e niada" - Comuni di Ballao e Armungia (SU)**

**PROGETTO DEFINITIVO**

Codice elaborato: AU-WIND001.ELB005e-2      Formato: A1

Planimetria, Profilo e Sezioni      area di deposito temporaneo n°2      Scala: 1:1'000/1:100

PROFONTE

**Econergy Project 2 S.r.l.**  
via Alessandro Manzoni n. 30  
20121 MILANO

PROGETTAZIONE

Queequeg Renewables, Ltd.  
Unit 3.21  
1110 Great West Road  
TW8 OGP, London

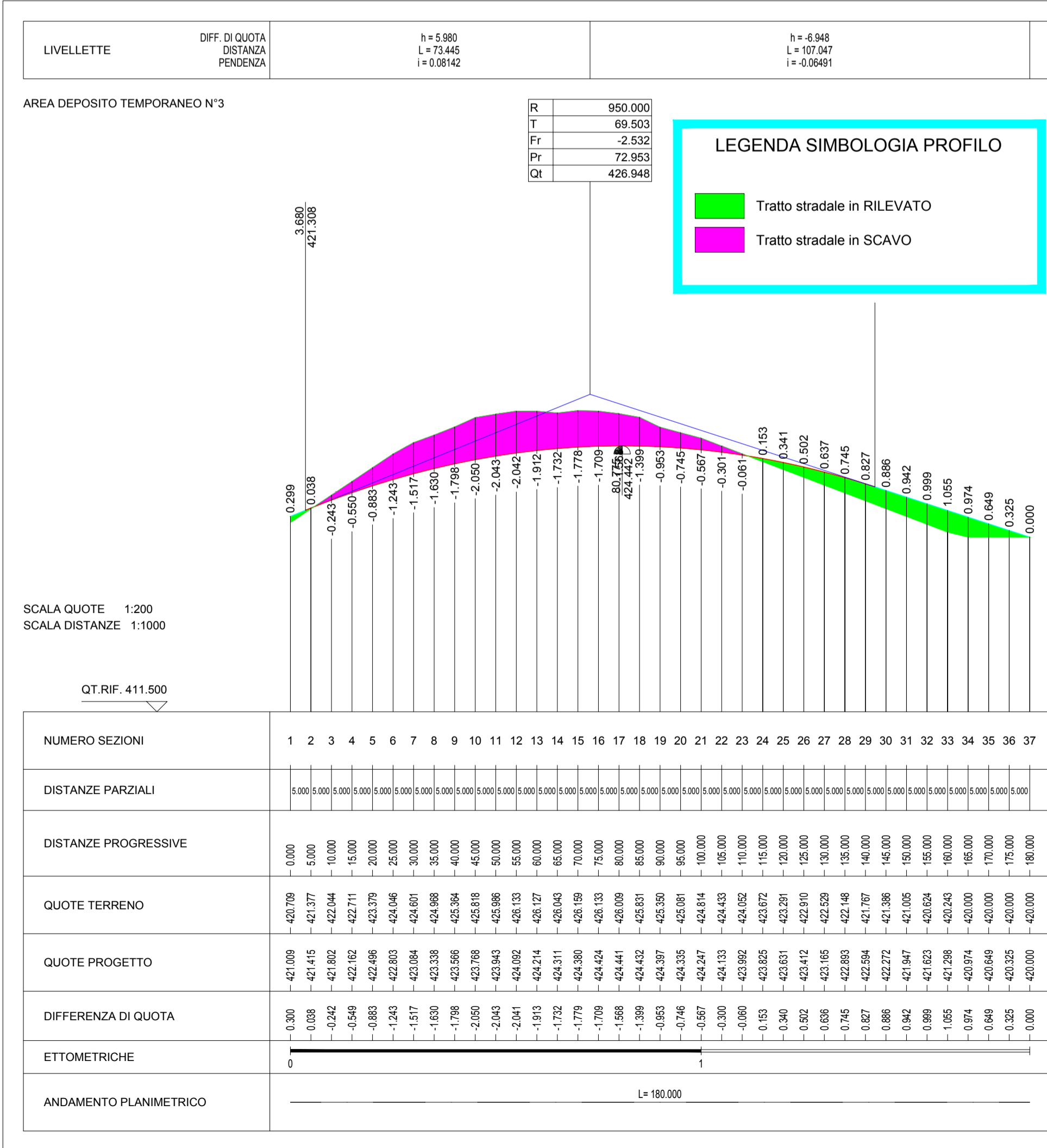
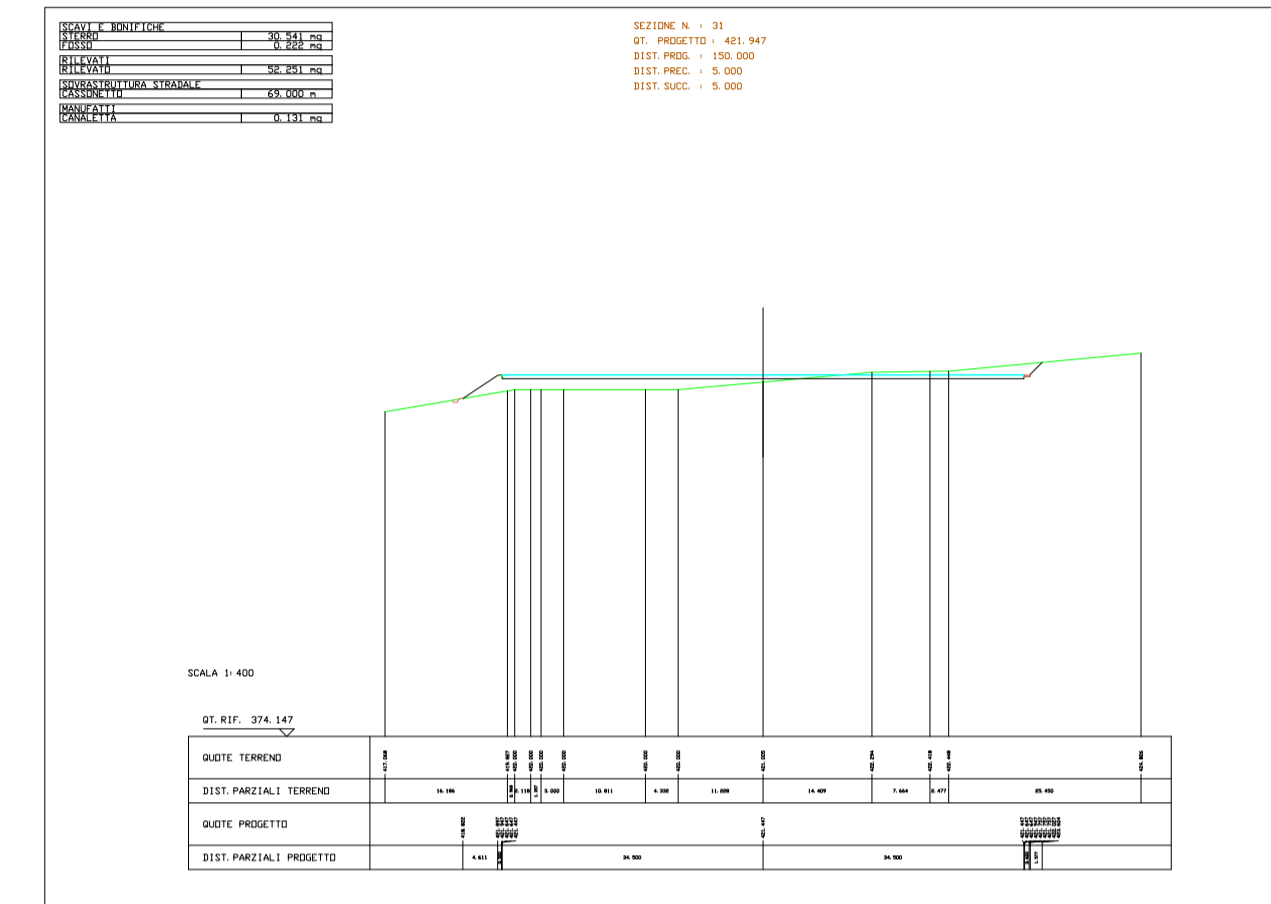
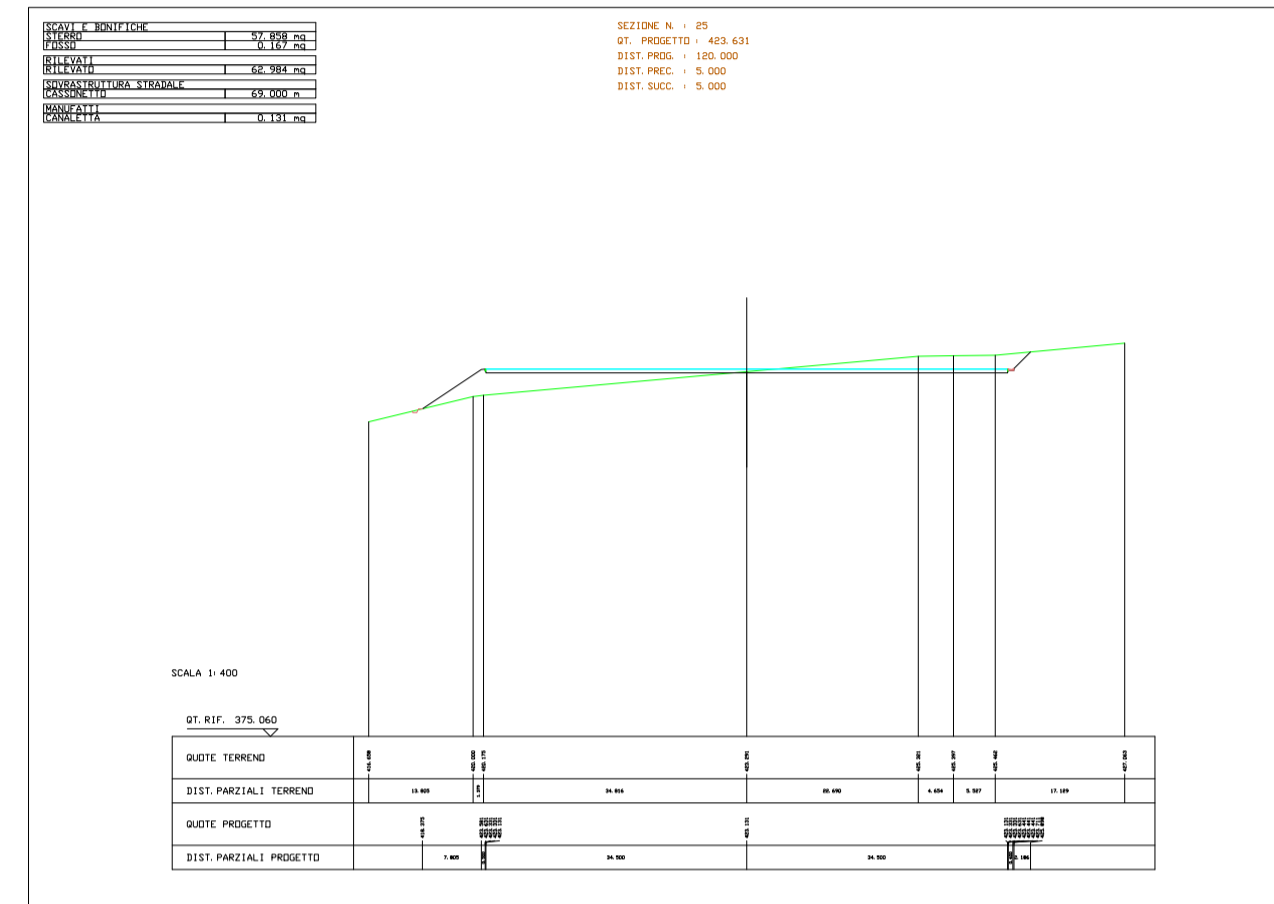
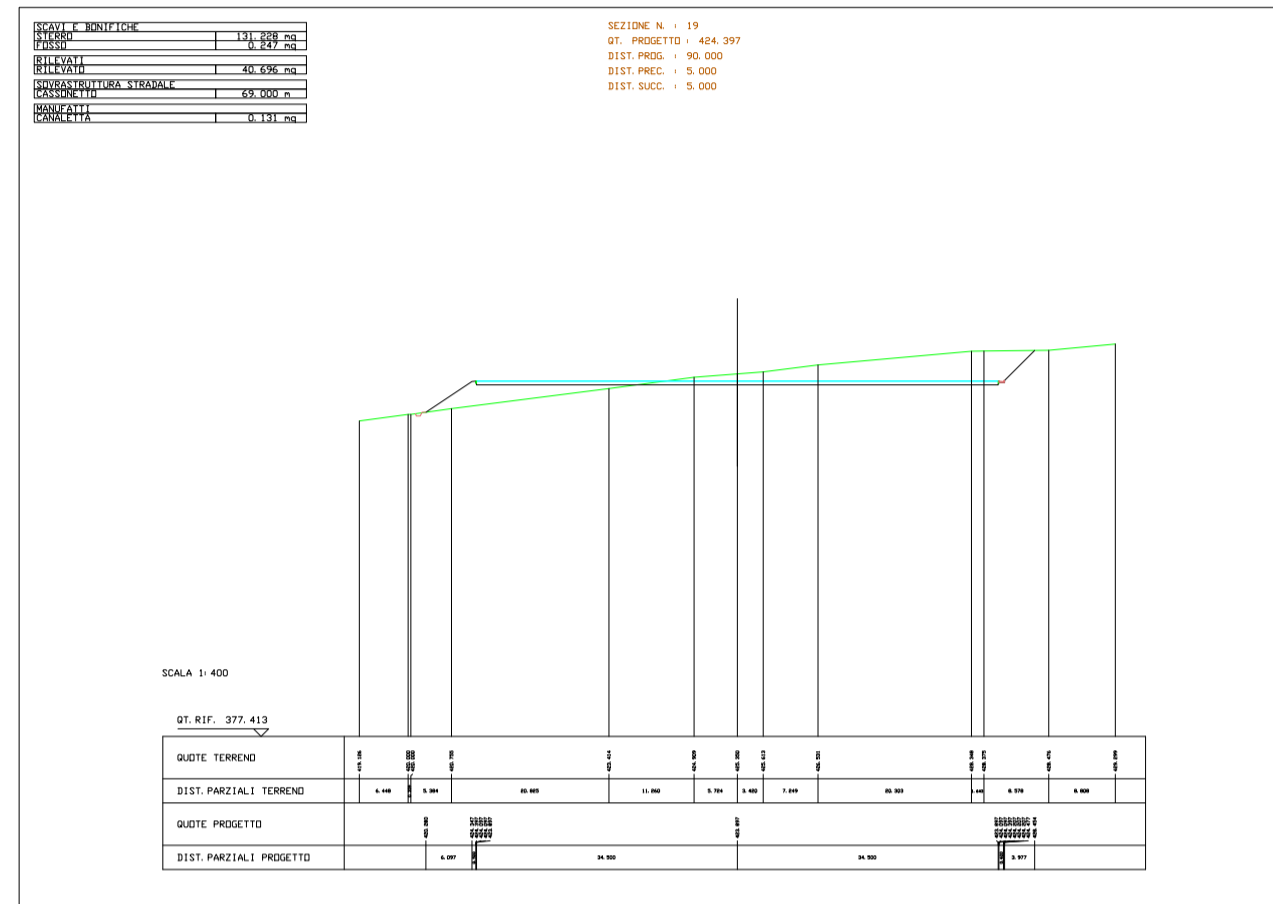
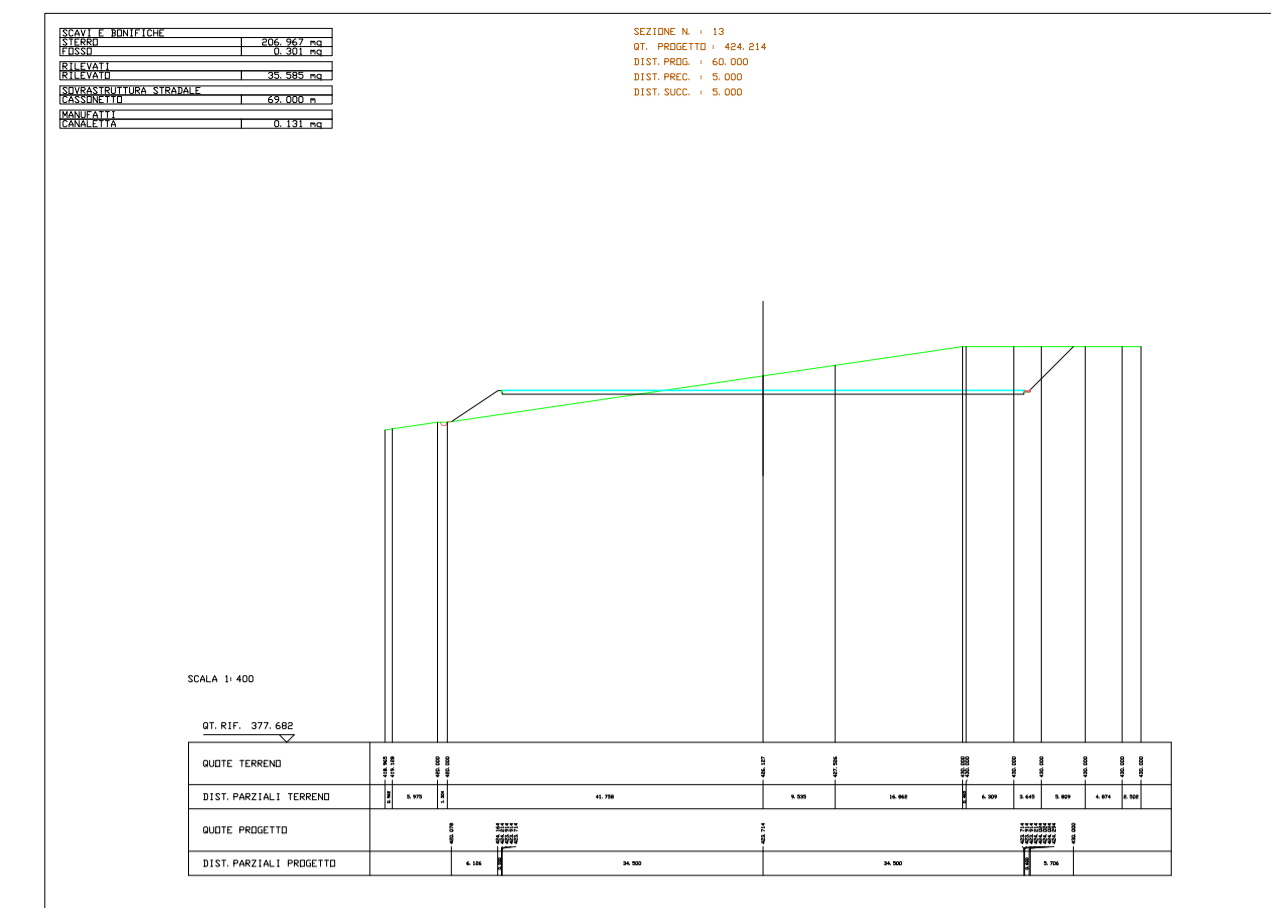
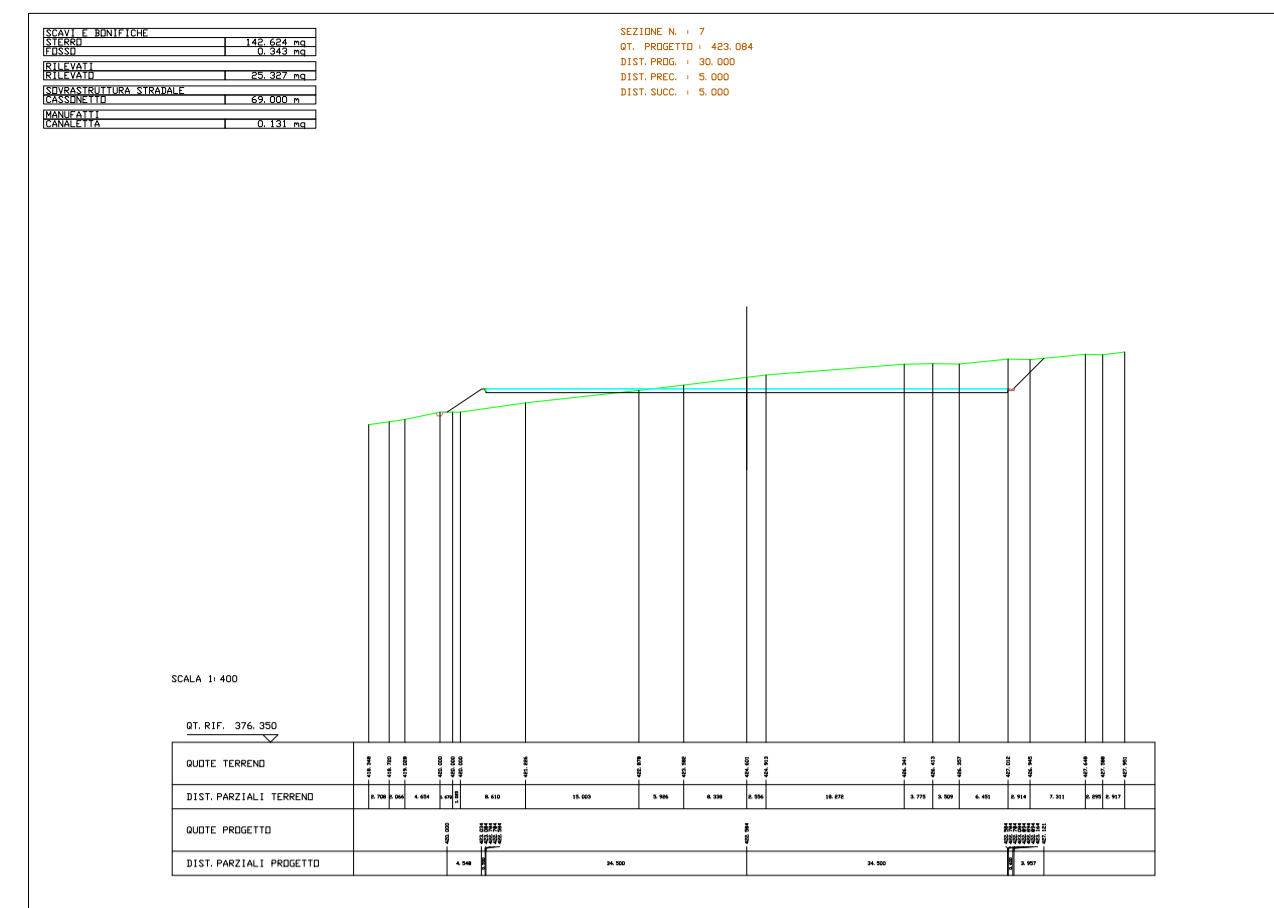
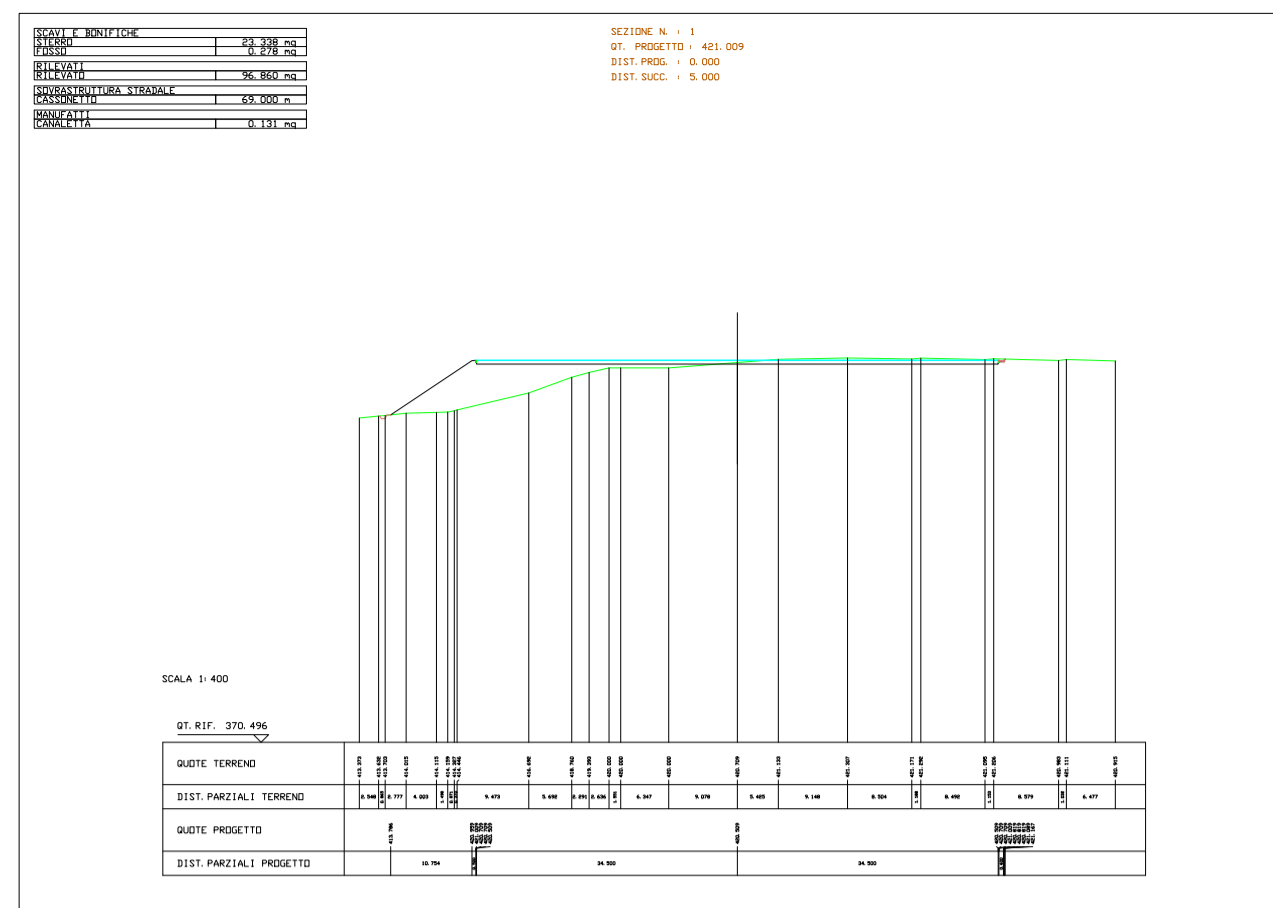
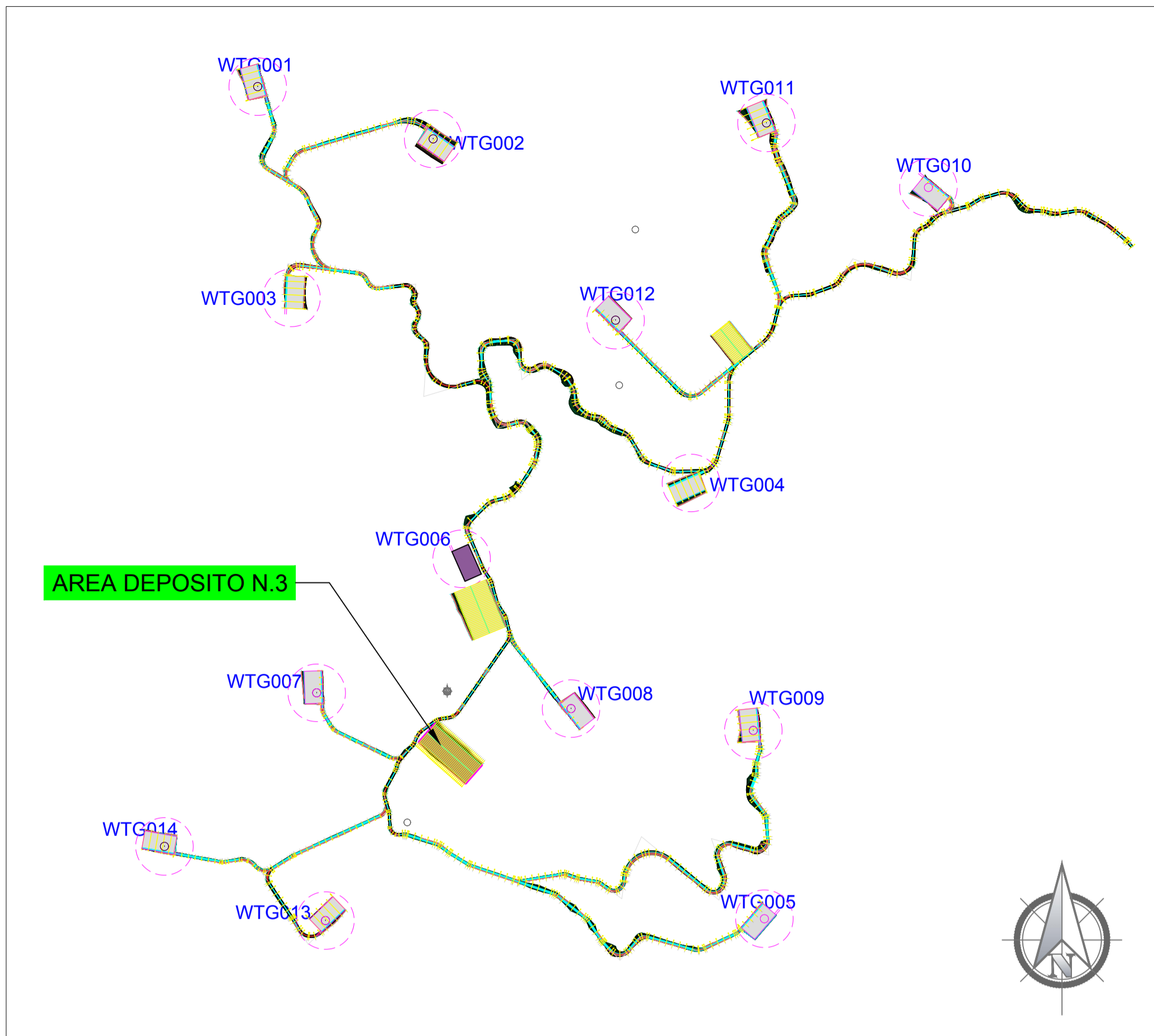
GRUPPO DI LAVORO

Ing.  
Ing.  
Ing.  
Geol.

TIMBRO REDATTORE      TIMBRO PROPONENTE

**Revisioni**

Rev.	Data	DESCRIZIONE	ELABORATO	VERIFICATO	APPROVATO
0	11/20	EMISSIONE PER VALIDAZIONE	XX		



### Impianto per la produzione di energia da fonte eolica da 92,4 MW "Brunco e niada" - Comuni di Ballao e Armungia (SU)

**PROGETTO DEFINITIVO**

Codice elaborato: AU-WIND001.ELB005e-3      Formato: A1

Planimetria, Profilo e Sezioni area di deposito temporaneo n°3      Scala: 1:1'000/1:100

PROPRONTE

**Econergy Project 2 S.r.l.**  
via Alessandro Manzoni n. 30  
20121 MILANO

PROGETTAZIONE

Queequeg Renewables, Ltd.  
Unit 3.21  
1110 Great West Road  
TW8 OGP, London

GRUPPO DI LAVORO

Ing.  
Ing.  
Ing.  
Geol.

TIMBRO REDATTORE      TIMBRO PROPONENTE

Revisioni					
Rev.	Data	DESCRIZIONE	ELABORATO	VERIFICATO	APPROVATO
0	11/20	EMISSIONE PER VALIDAZIONE	XX		