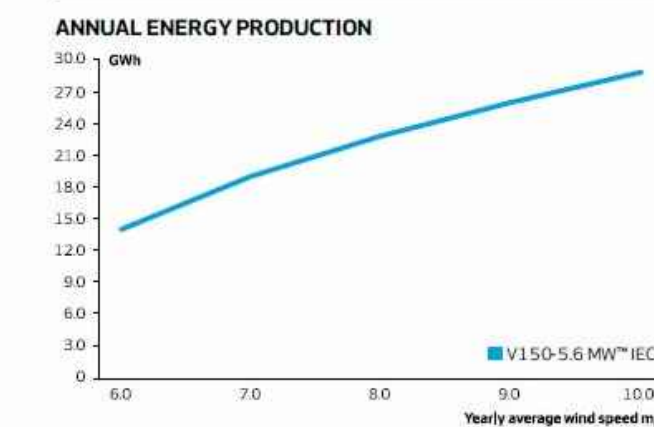
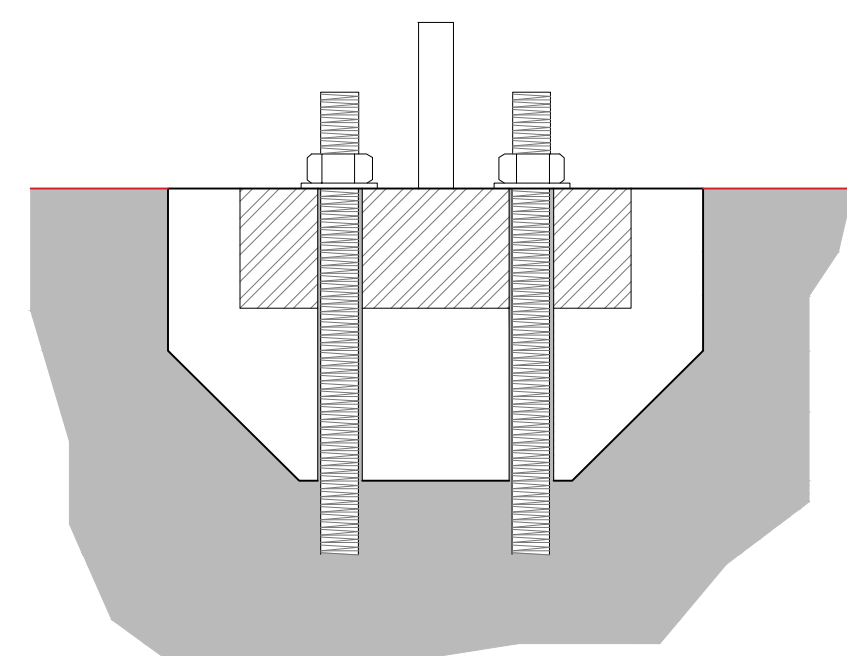


<b>POWER REGULATION</b>	Pitch regulated with variable speed
<b>OPERATING DATA</b>	
Rated power	5,600 kW
Cut-in wind speed	3m/s
Cut-out wind speed*	25m/s
Wind class	IEC 5
Standard operating temperature range	from -20°C to +45°C
*High Wind Operation available as standard	
**Subject to different temperature options	
<b>SOUND POWER</b>	
Maximum	104.9 dB(A)**
**Sound Optimised Modes available dependent on site and country	
<b>ROTOR</b>	
Rotor diameter	150m
Swept area	17,671 m <sup>2</sup>
Aerodynamic brake	full blade feathering with 3 pitch cylinders
<b>ELECTRICAL</b>	
Frequency	50/60Hz
Converter	full scale
<b>GEARBOX</b>	
Type	two planetary stages

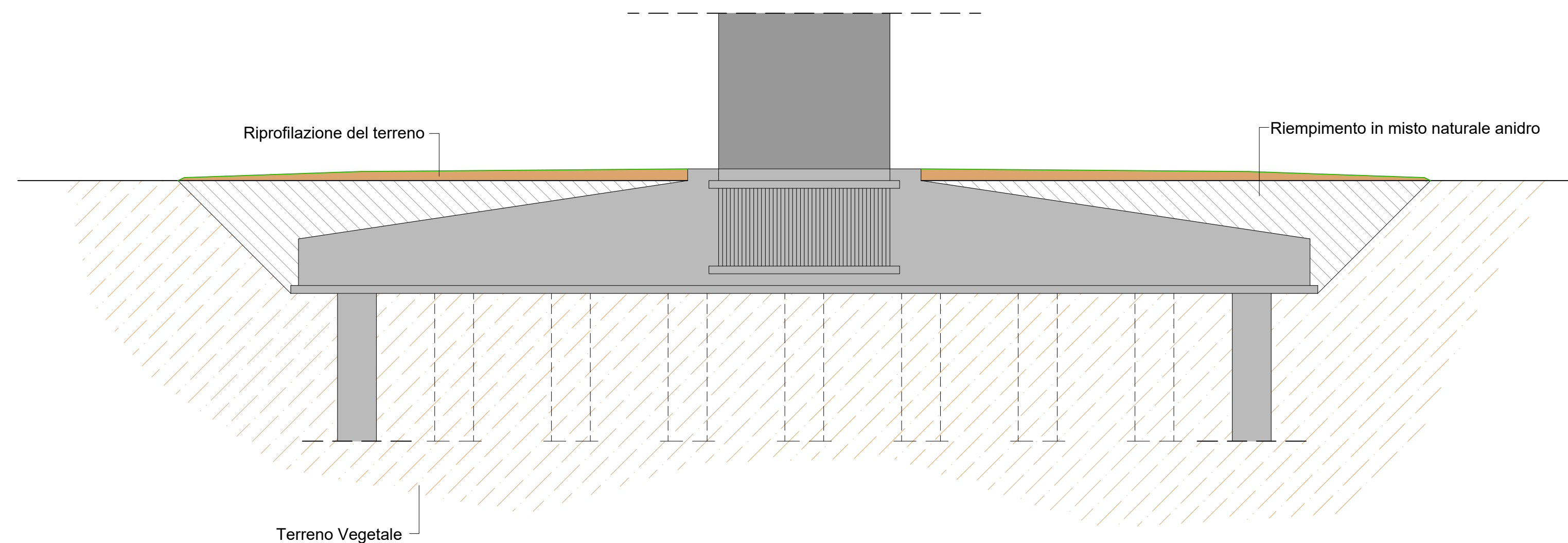
- TURBINE OPTIONS**
- Condition Monitoring System
  - Oil Debris Monitoring System
  - Service Personnel Lift
  - Low Temperature Operation to -30°C
  - Vestas Ice Detection™
  - Vestas Anti-Icing System™
  - Vestas IntelliLight\*
  - Vestas Shadow Detection System
  - Aviation Lights
  - Aviation Markings on the Blades
  - Fire Suppression System
  - Increased Cut-in Wind Speed
  - Lightning Detection System
  - Load Optimised Modes



Particolare aggancio base torre



Particolare fondazione torre - scala 1:100



Committente: **RWE** RENEWABLES ITALIA S.R.L.  
Via Andrea Doria, 411G - 00192 Roma  
P.IVA/C.F. 06400370968  
pec: rwerenewablesitaliasrl@legalmail.it

Titolo del Progetto: **Progetto per la realizzazione di una centrale eolica da 44,80 MW nel comune di Corleto Perticara (PZ)**

Documento: **PROGETTO DEFINITIVO** N° Documento: **PECP\_A.16.b.2**  
Richiesta Autorizzazione Unica ai sensi del D. Lgs. 387 del 29/09/2003

ID PROGETTO: **PECP** DISCIPLINA: **P** TIPOLOGIA: **D** FORMATO: **A1**

Elaborato: **Sezione tipo aerogeneratori - Particolari sistemi di ancoraggio**

FOGLIO: **1 di 1** SCALA: **1:1.000 - 1:100** Nome file: **PECP\_A.16.b.2\_Sezione\_tipo\_aerogeneratori.pdf**

Progettazione: **R.T.P. D'Occhio - De Blasis**  
Via S. Angelo, 19 - 82020 Campolattaro (BN)

Progettisti: **Ing. Giuseppe Antonio De Blasis** **Arch. Carmine D'Occhio**

Rev.	Data	Revisione	Descrizione Revisione	Redatto	Controllato	Approvato
00	07/12/2020	PRIMA EMISSIONE		R.T.P. D'Occhio - De Blasis	RWE	RWE