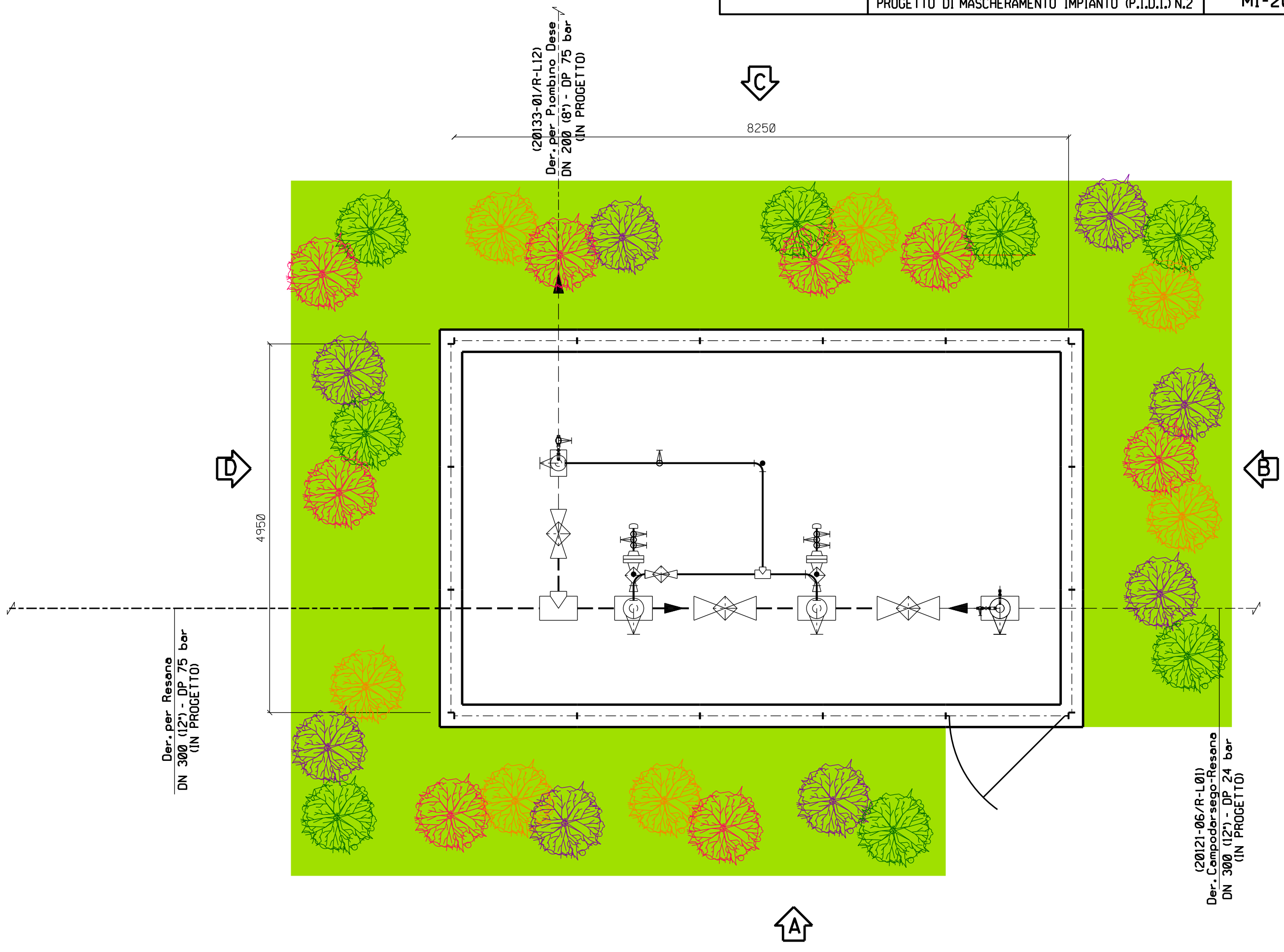
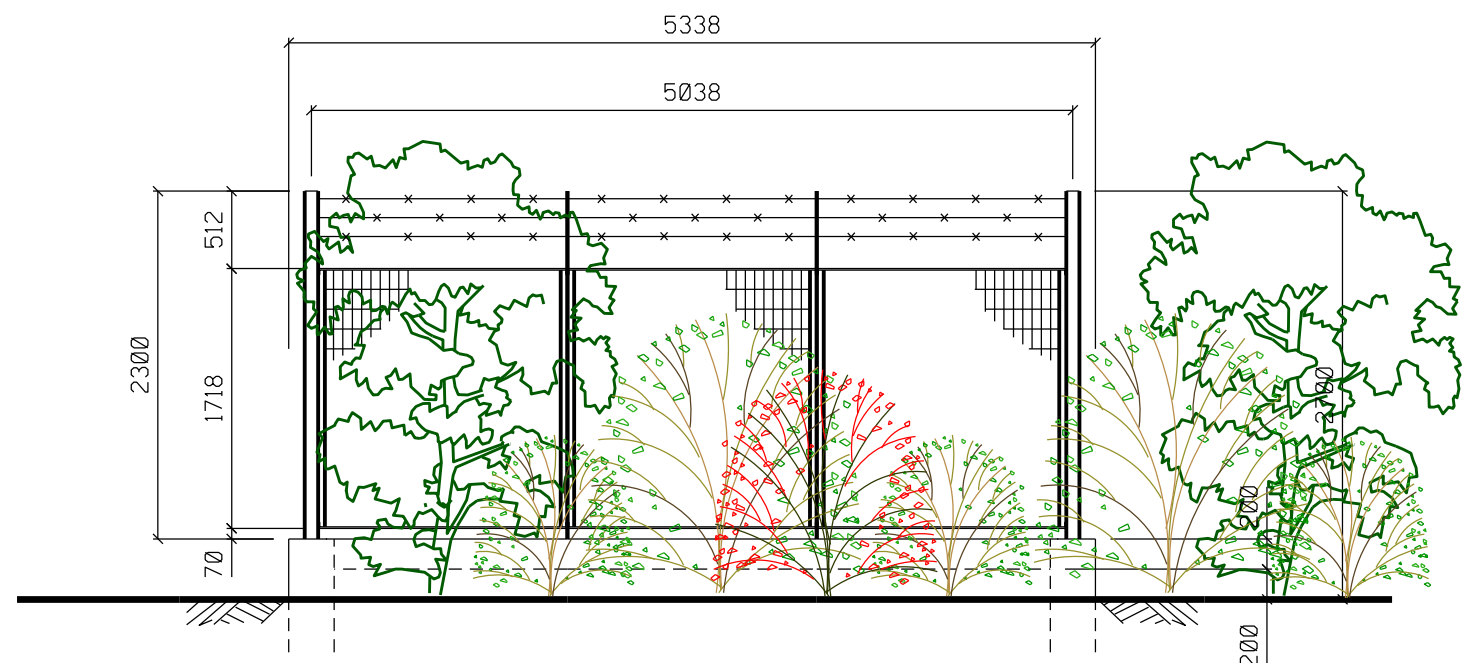




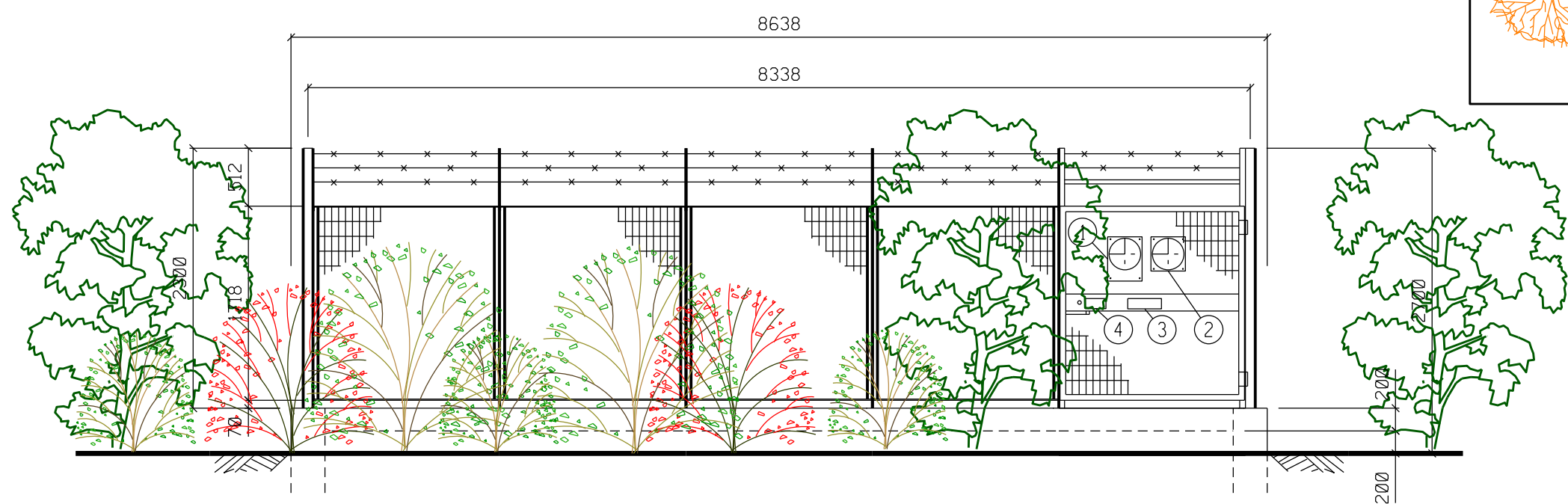
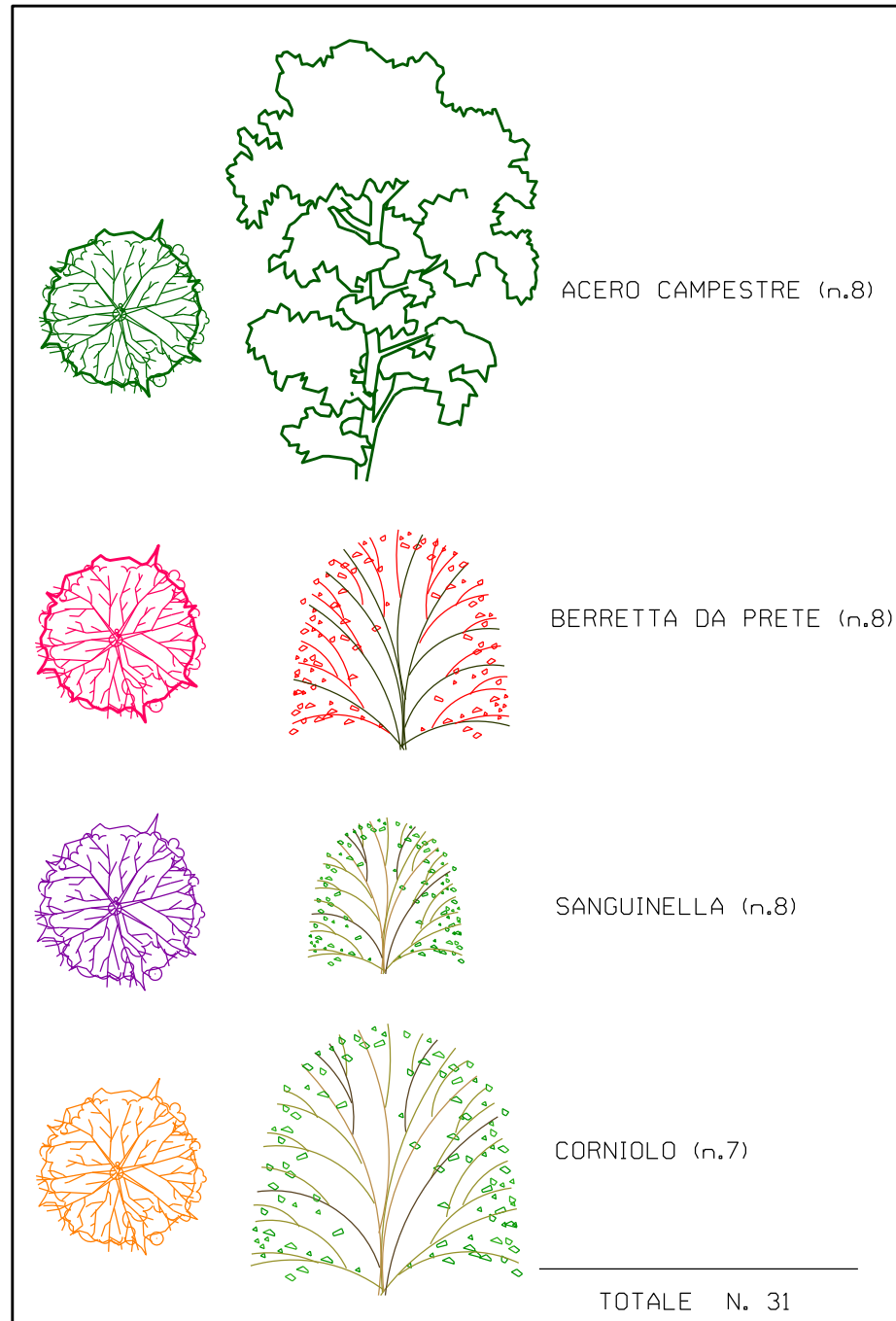
DER. PER RESANA DN 300 (12") - DP 24 bar
PROGETTO DI MASCHERAMENTO IMPIANTO (P.I.D.I.) N.2

COMMESSA NR/16025/R-L02
COD. TEC. 20129
MI-20129-02
Fig. 2 di 3





PROSPETTO B



PROSPETTO A