


COMUNE DI CASSIGLIO


Committente: Italgas spa - Via Kennedy, 1 - 24020 - Villa di Serio (BG)

italgas
passion for energy


IMPIANTO IDROELETTRICO DI OLMO AL BREMBO - DERIVAZIONE VAL STABINA

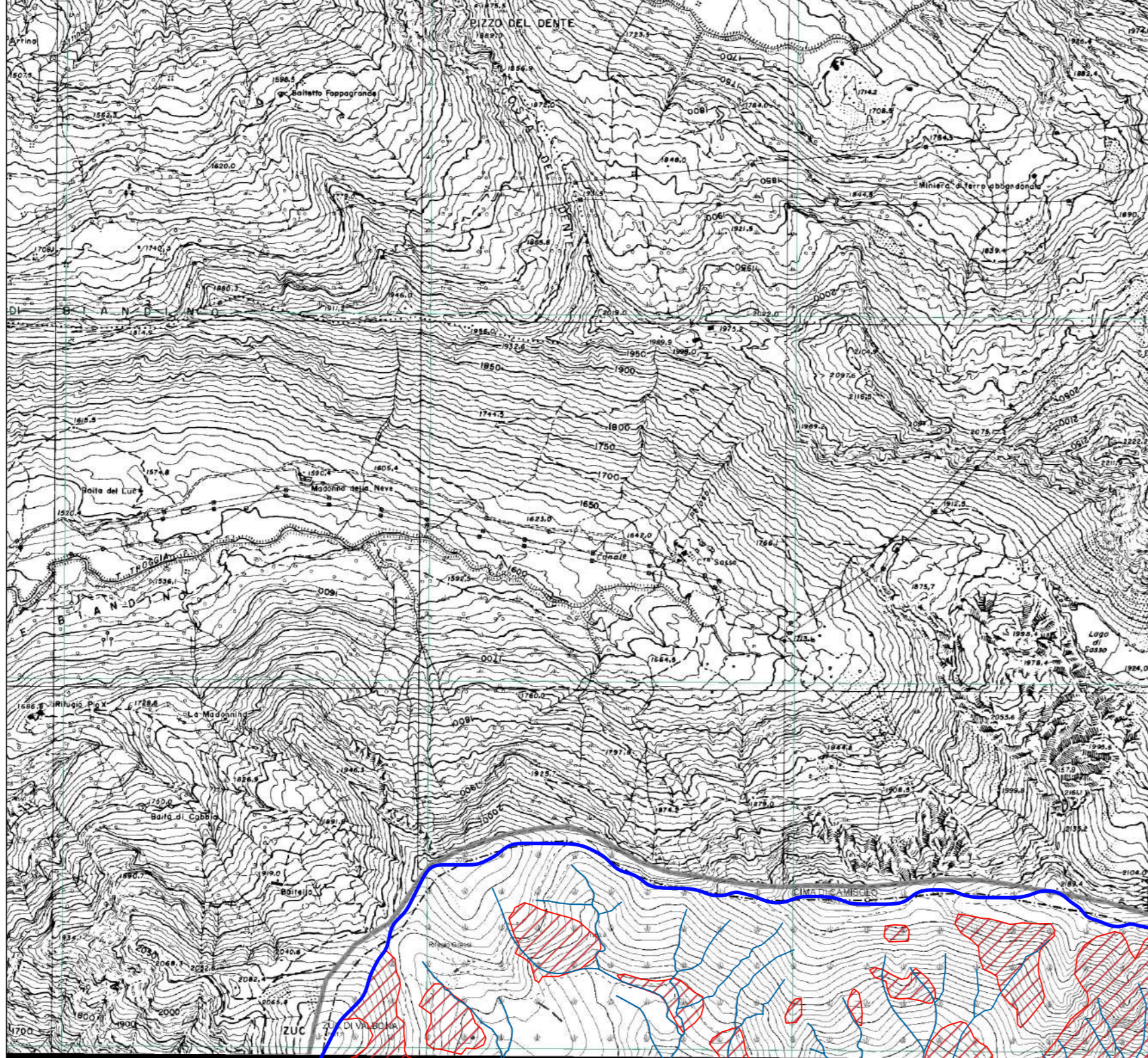



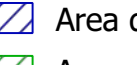
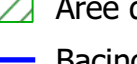
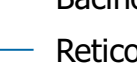

STUDIO GEOLOGICO PRELIMINARE DEL BACINO IDROGRAFICO A MONTE DELL'OPERA DI PRESA SUL TORRENTE STABINA E AFFERENTE ALL'INVASO DI CASSIGLIO (BG)
Tav. 02: Carta Geomorfologica e del dissesto idrogeologico (scala 1:20.000)

Pisogne, maggio 2019  Dott. Geol. Fabio Fenaroli
Fabio Fenaroli


Prima stesura versione: rev.00


 Via Giuseppe Palmi, 5
25052 Pisogne (BS)
tel. 030 059 00 24
geologo.fenaroli@gmail.com



- Legenda**
-  Area di frana attiva
 -  Area di frana quiescente
 -  Area di accumulo detritico
 -  Bacino
 -  Reticolo idrico

	Area (km ²)	%
Area di frana attiva	15,29	26,43
Area di frana quiescente	1,49	2,57
Area di accumulo detritico	0,50	0,86


 Scala
1:20.000