



REGIONE
PUGLIA

AUTORIZZAZIONE UNICA AI SENSI DEL d.lgs. 29/12/2003 N. 387 RELATIVA ALLA COSTRUZIONE ED ESERCIZIO DI UN IMPIANTO DI PRODUZIONE DELL'ENERGIA ELETTRICA DA FONTE EOLICA AVENTE POTENZA IN IMMISSIONE PARI A 52,8 MW COSTITUITO DA 9 AEROGENERATORI DI POTENZA PARI A 6 MW CON RELATIVO COLLEGAMENTO ALLA RETE ELETTRICA - IMPIANTO DENOMINATO "SAN PANCRAZIO WIND" UBICATO NEI COMUNI DI SAN PANCRAZIO SALENTINO - MESAGNE - TORRE SANTA SUSANNA.

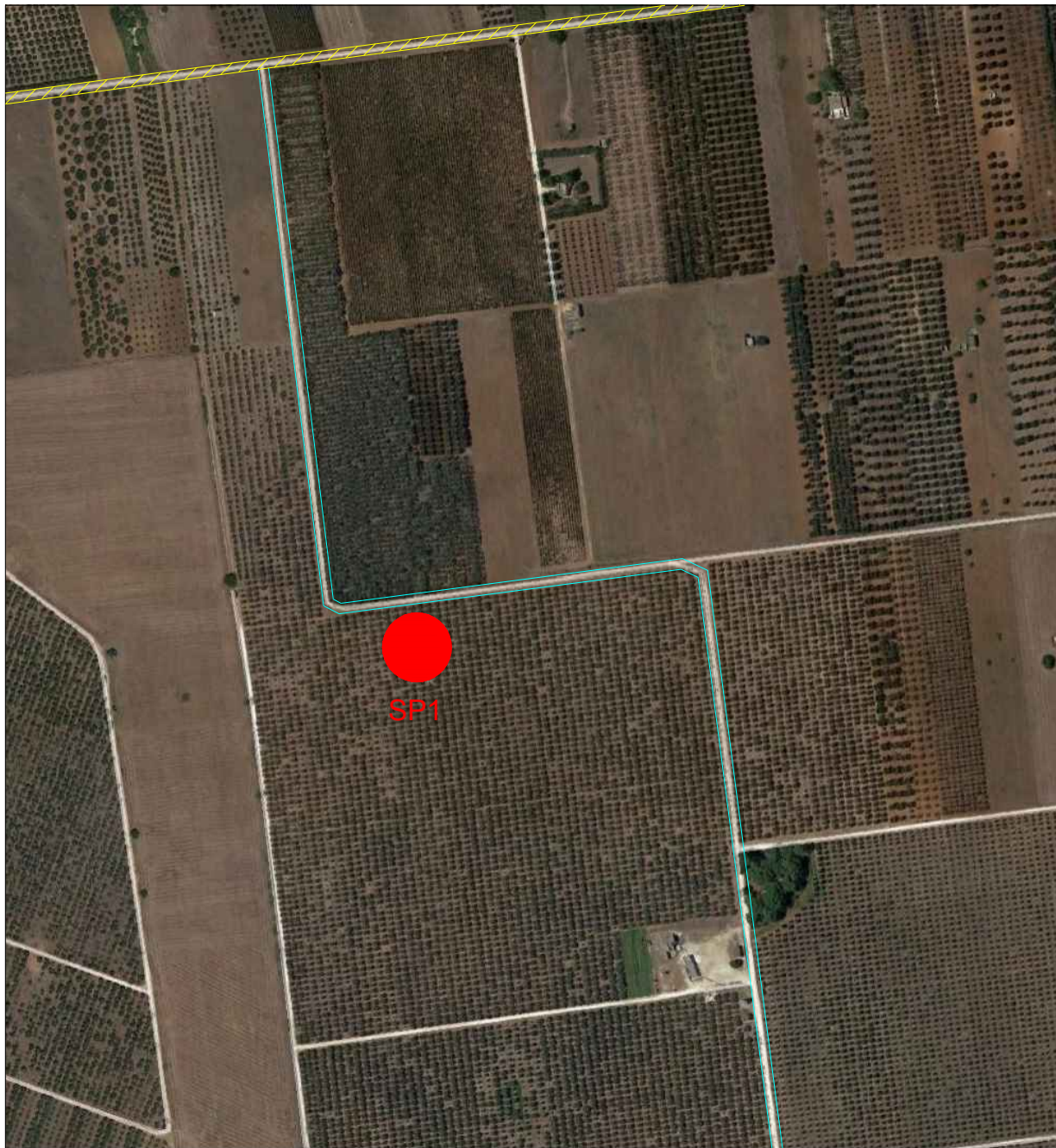
ELABORATO: Particolari posizionamento aerogeneratori




PROGETTAZIONE



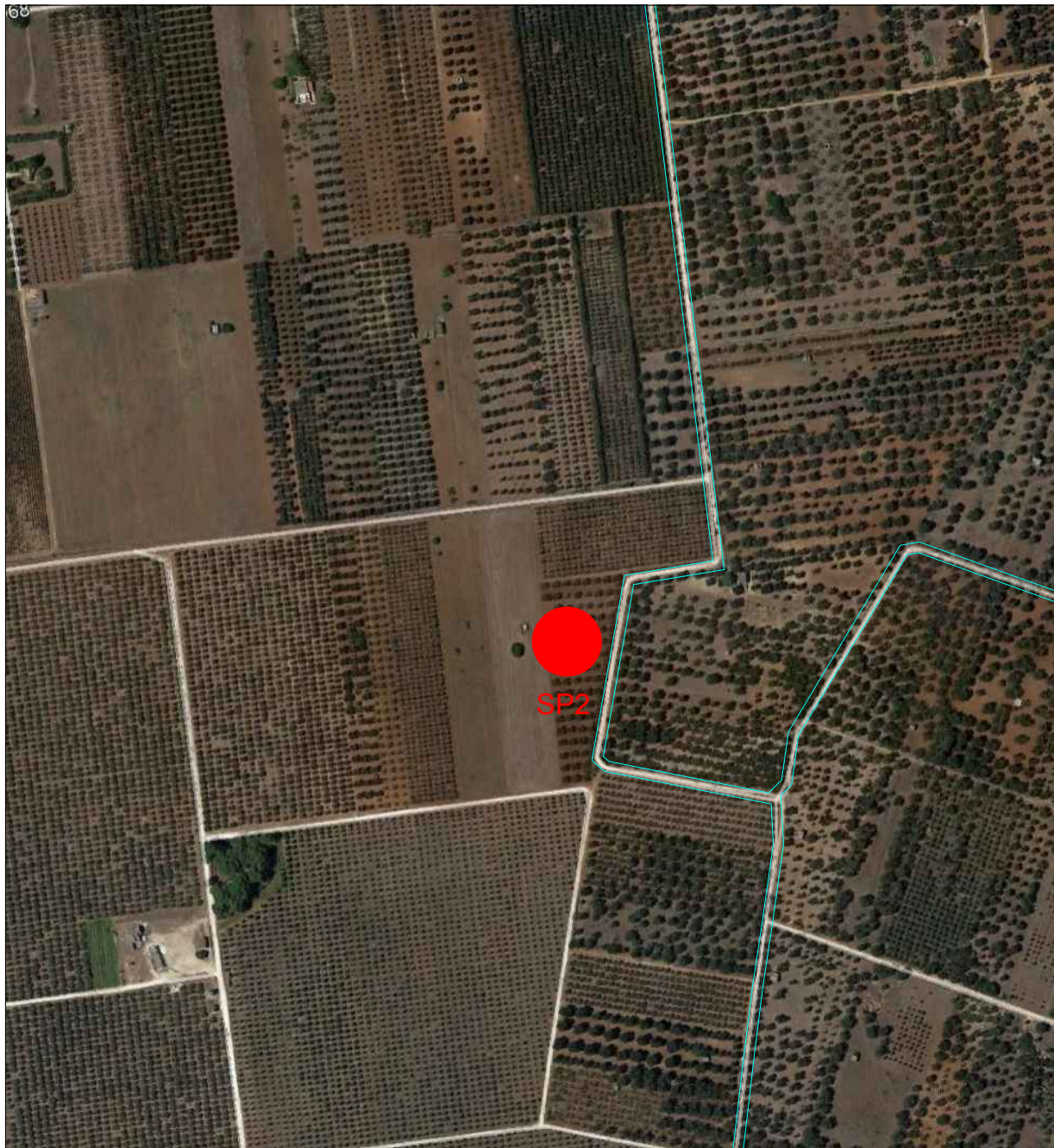
REVISIONI

REV.	DATA	DESCRIZIONE	ESEGUITO	VERIFICATO	APPROVATO
01	06/2020				



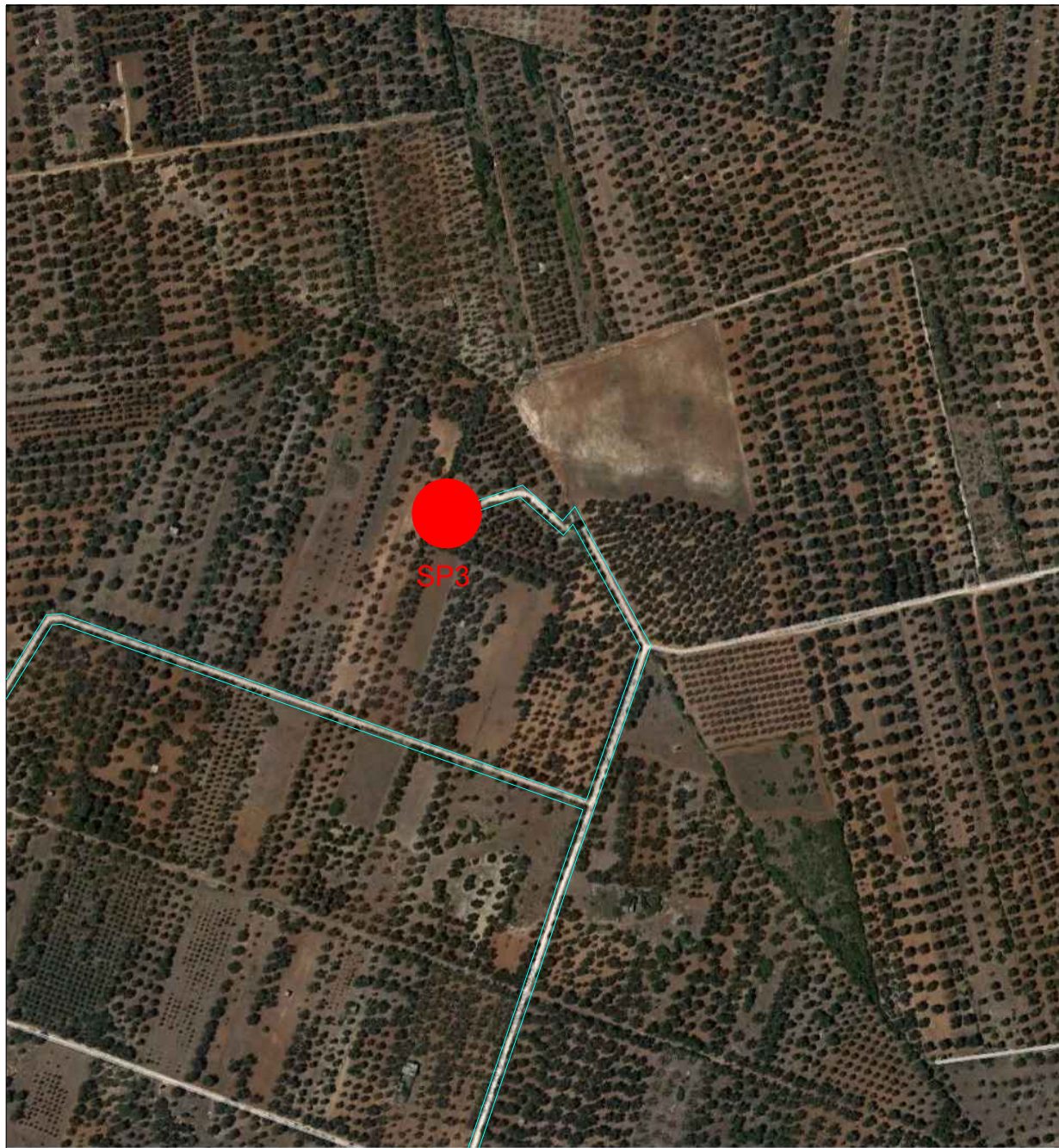
-  Aerogeneratore
-  Strada prov. N.68
-  Viabilità interna

PARTICOLARE POSIZIONAMENTO SP1



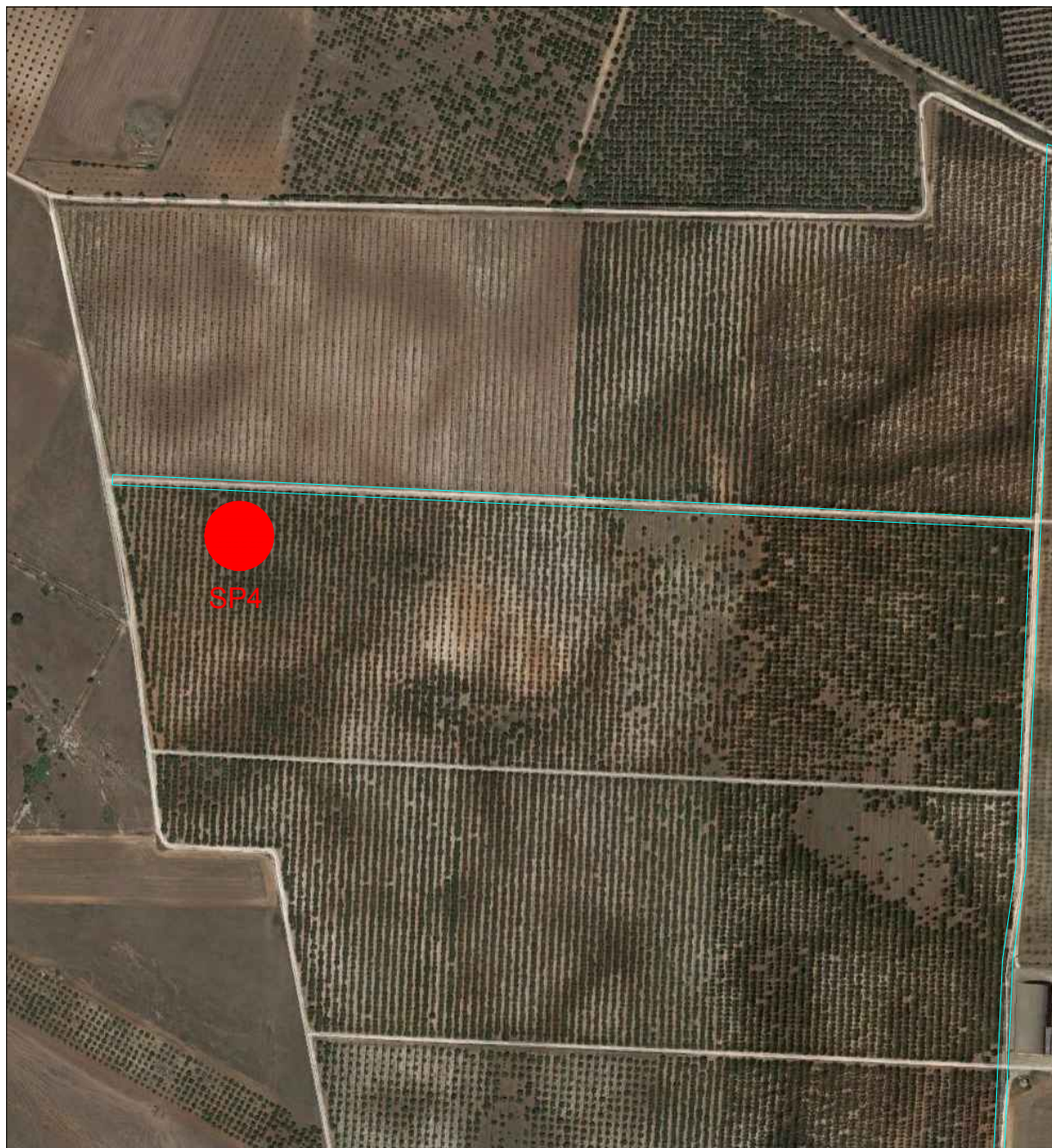
-  Aerogeneratore
-  Viabilità interna

PARTICOLARE POSIZIONAMENTO SP2

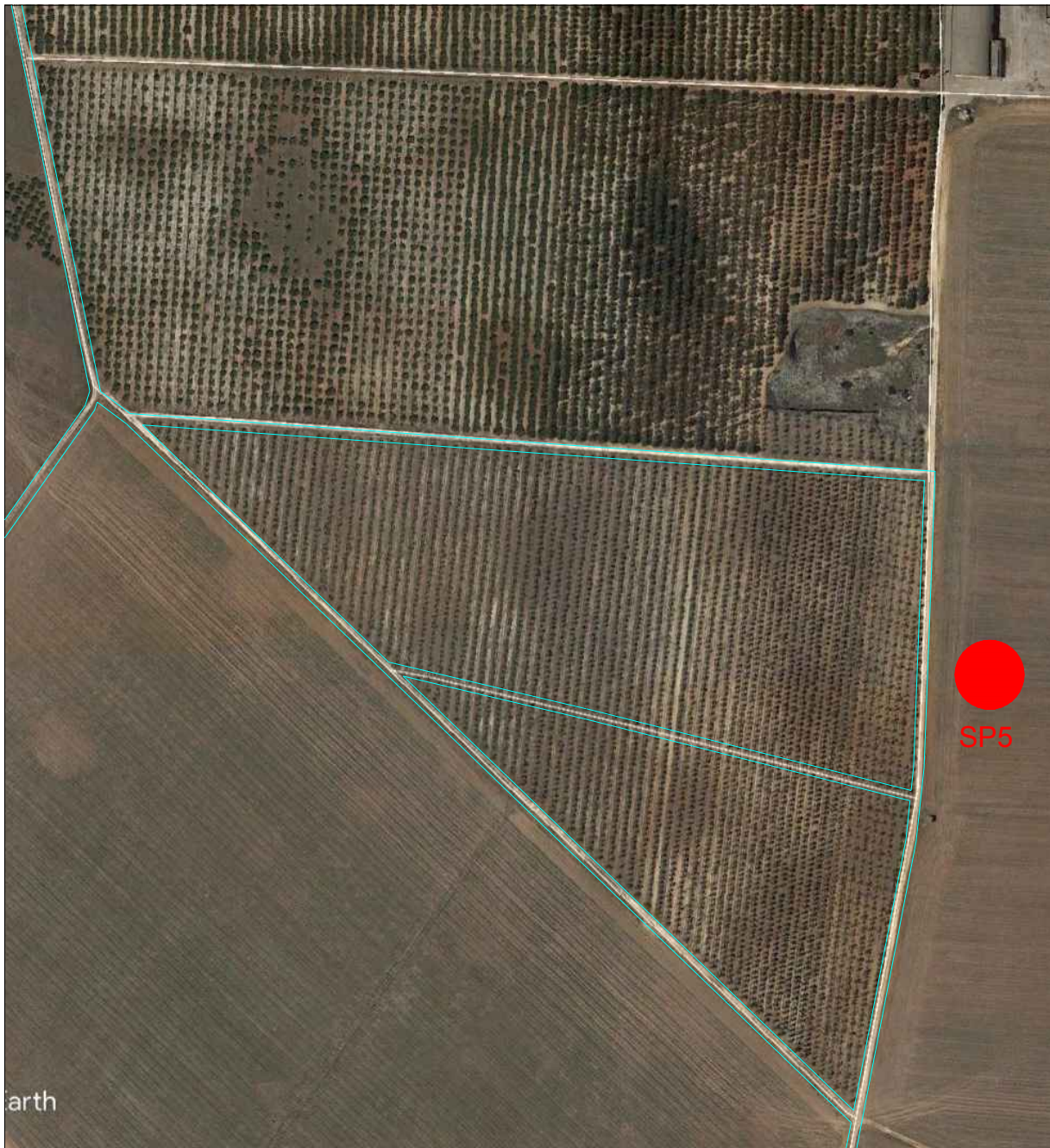


-  Aerogeneratore
-  Viabilità interna

PARTICOLARE POSIZIONAMENTO SP3



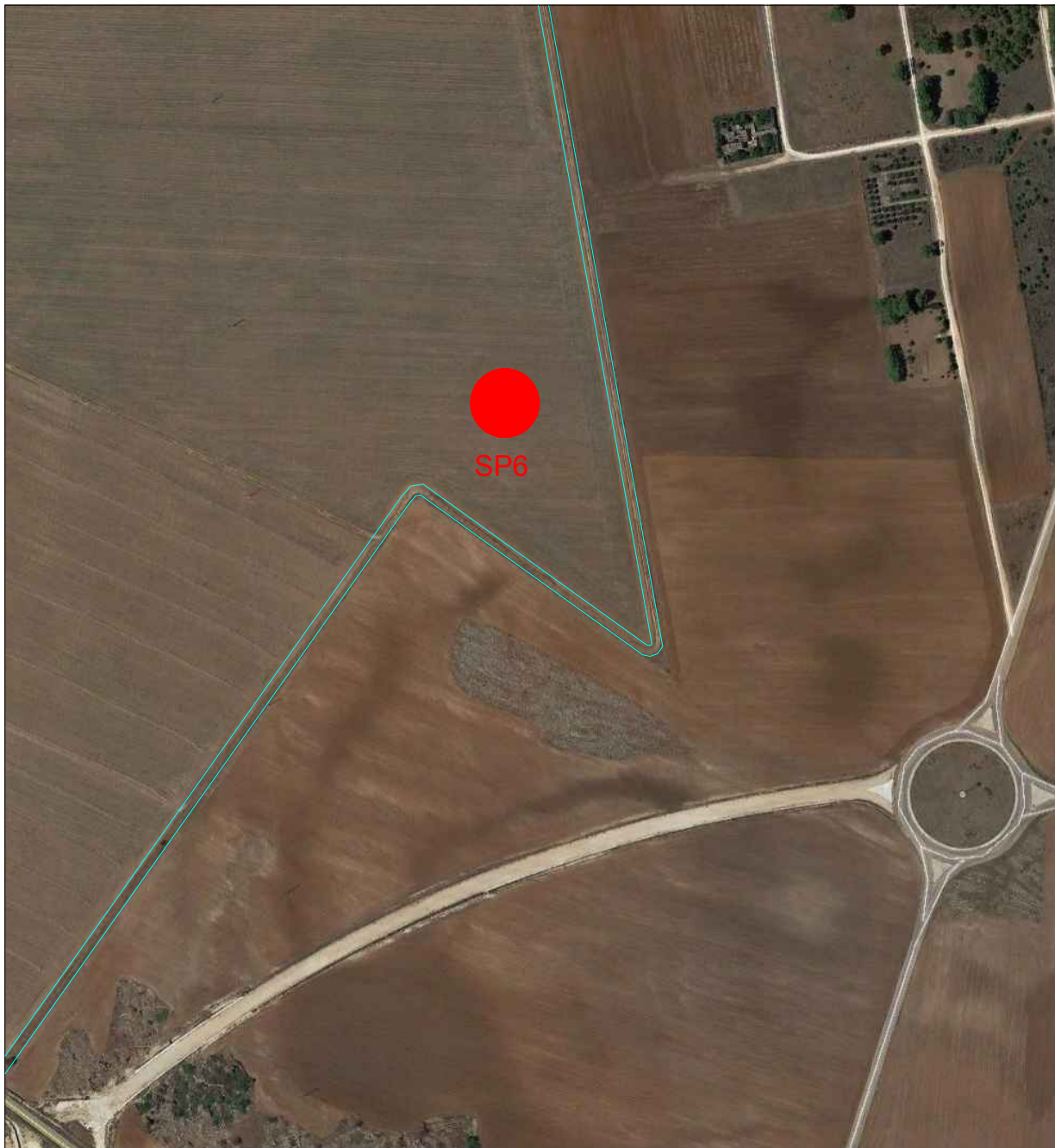
PARTICOLARE POSIZIONAMENTO SP4



-  Aerogeneratore
-  Viabilità interna

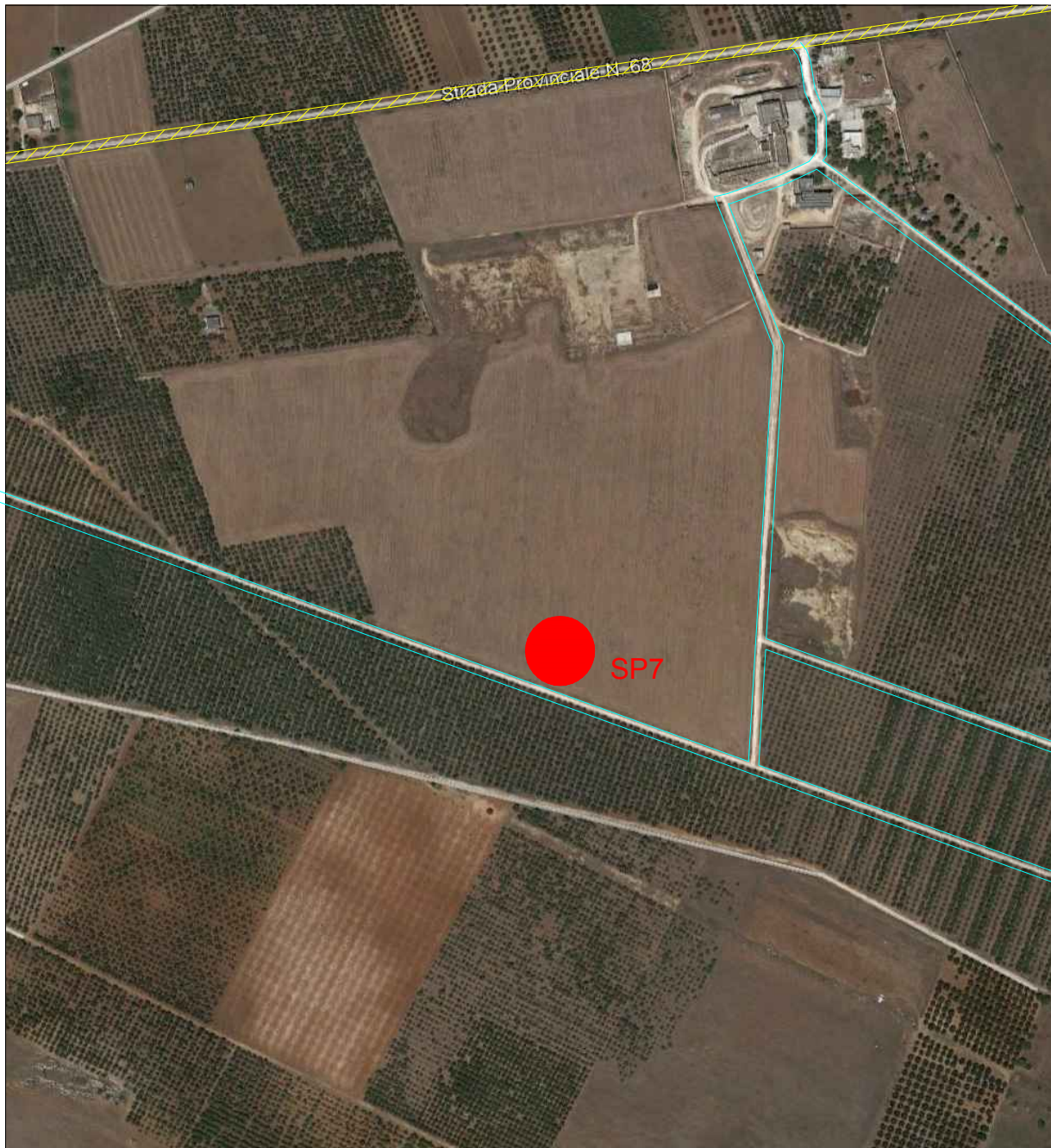
SP5


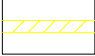
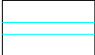
PARTICOLARE POSIZIONAMENTO SP5



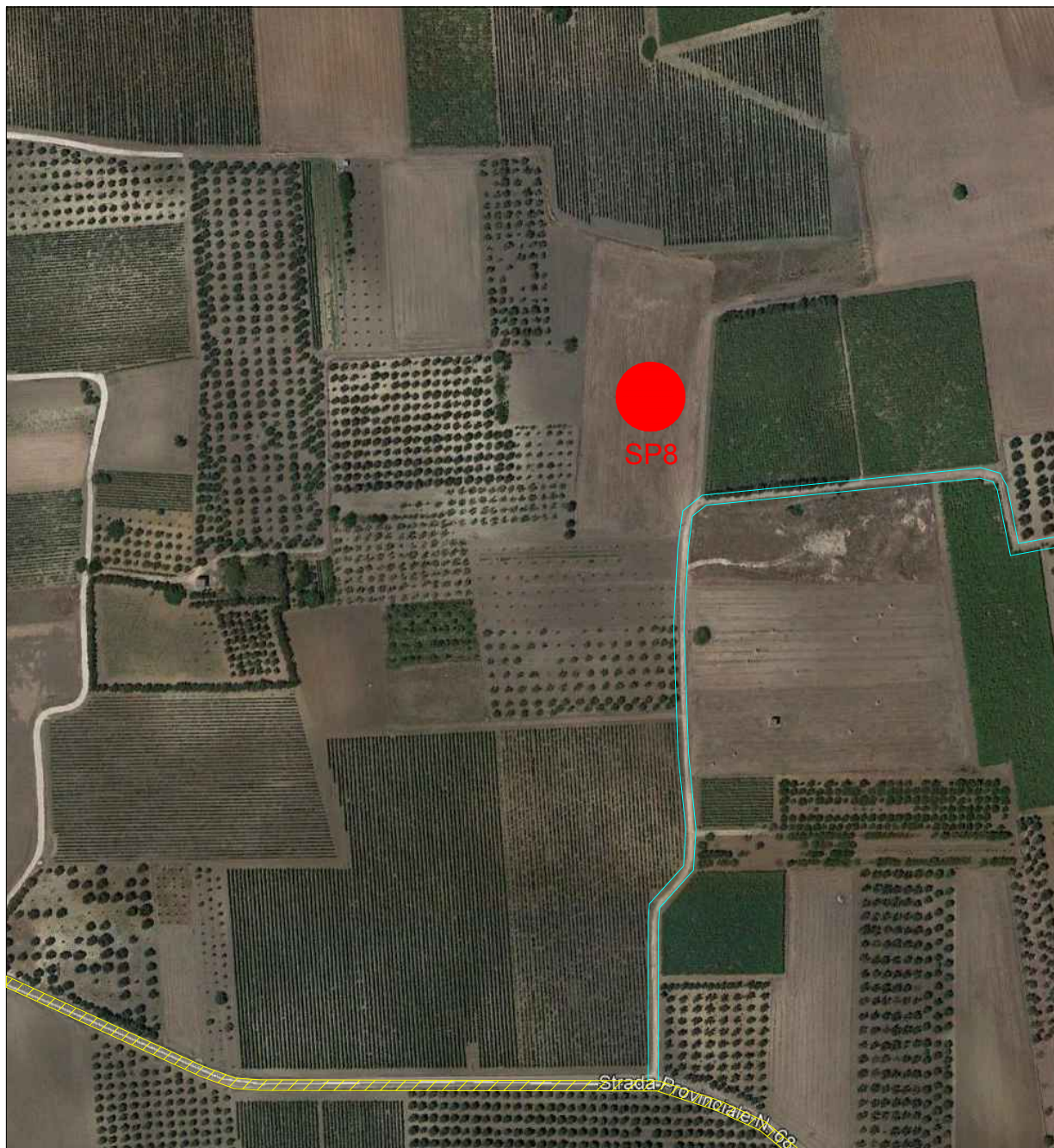
-  Aerogeneratore
-  Viabilità interna




PARTICOLARE POSIZIONAMENTO SP6



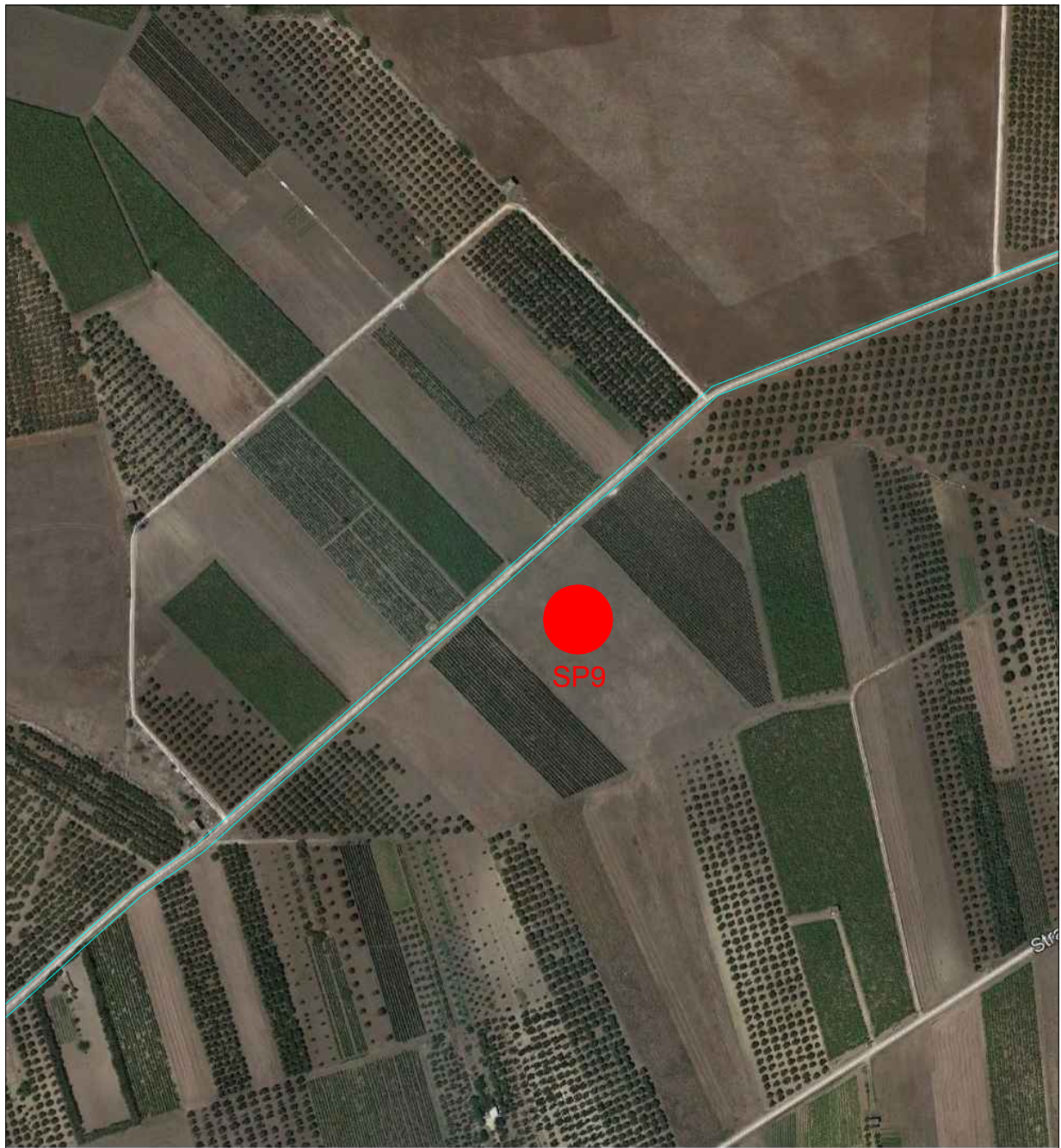
-  Aerogeneratore
-  Strada prov. N.68
-  Viabilità interna

PARTICOLARE POSIZIONAMENTO SP7



-  Aerogeneratore
-  Strada prov. N.68
-  Viabilità interna

PARTICOLARE POSIZIONAMENTO SP8



-  Aerogeneratore
-  Viabilità interna

PARTICOLARE POSIZIONAMENTO SP9