
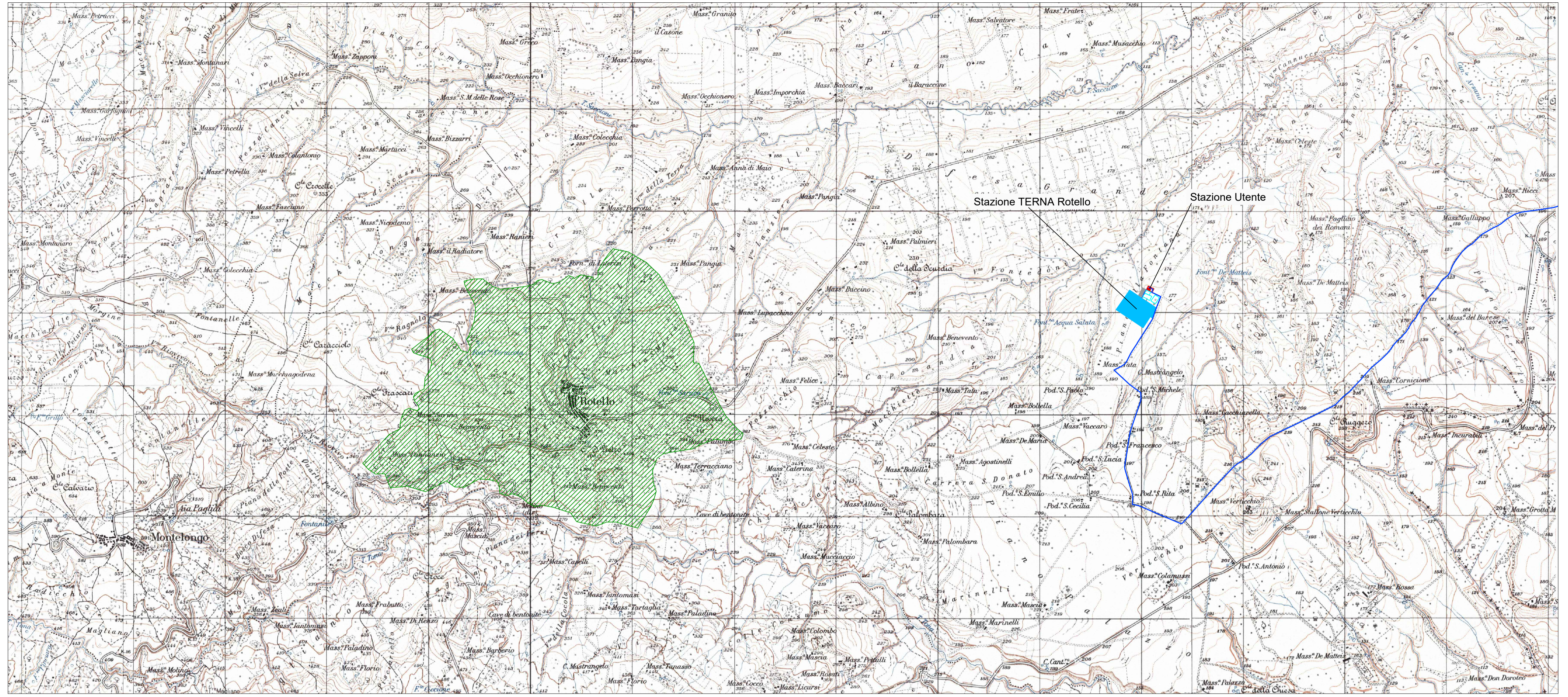
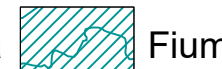


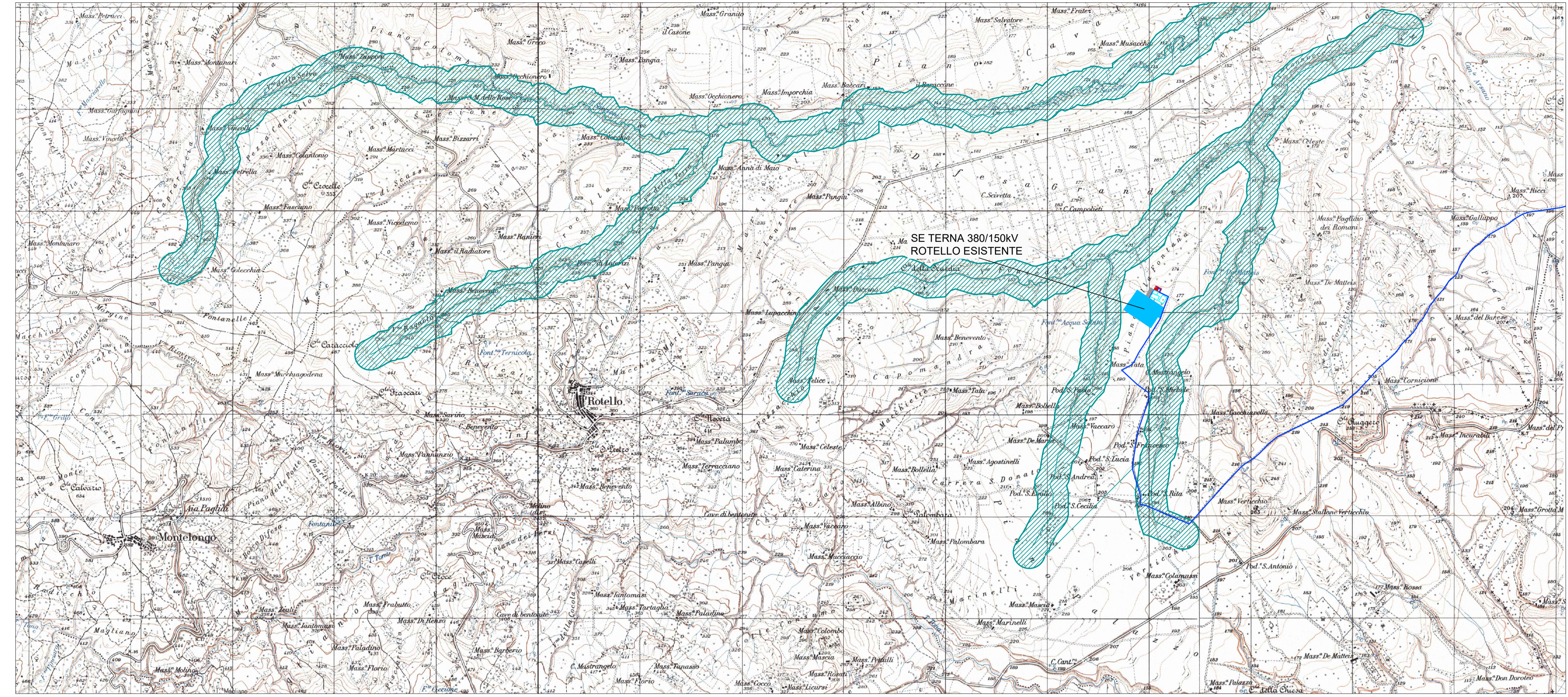
Aree tutelate per legge - D.L.gs.42/2004 art.136

Legenda  Immobili ed aree di notevole interesse pubblico


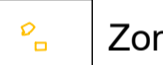


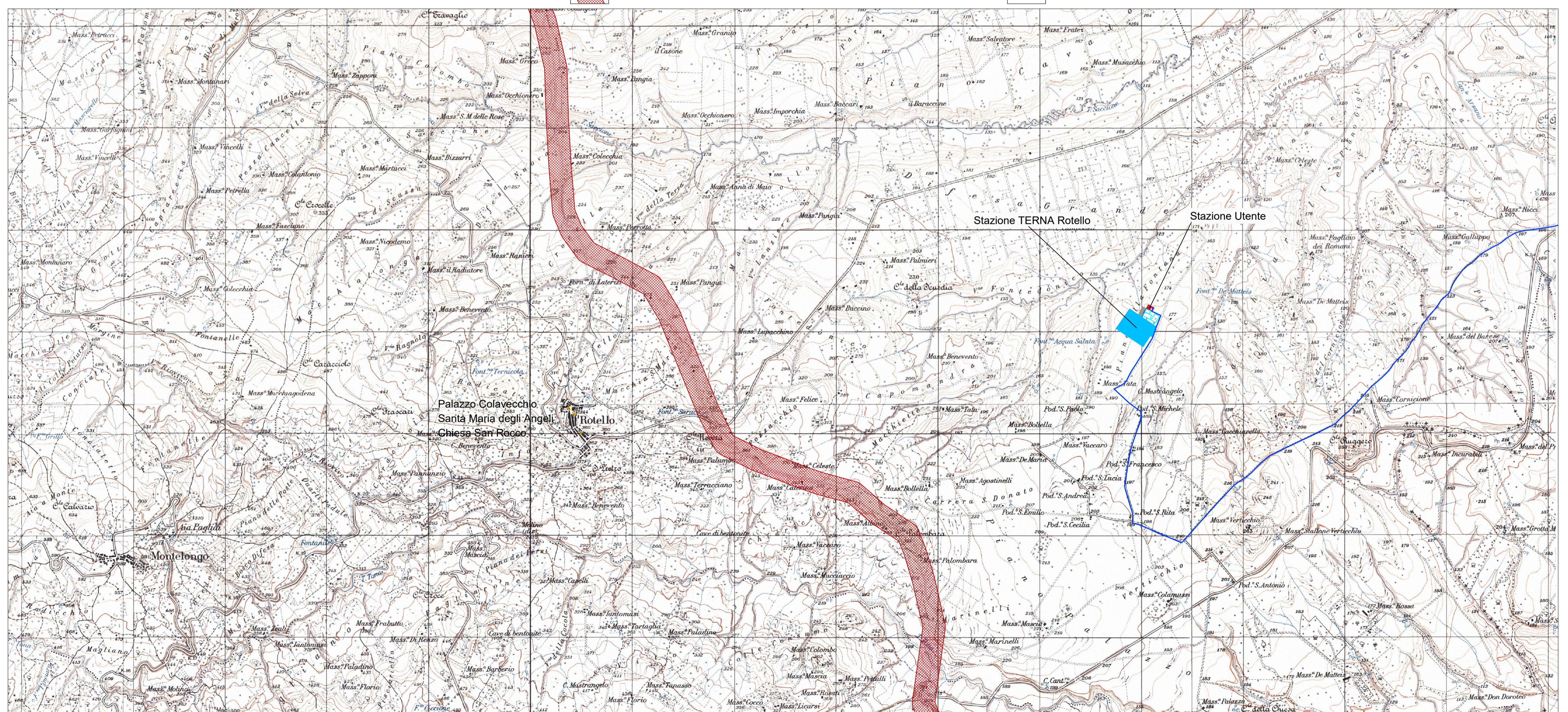
Aree tutelate per legge - D.L.gs.42/2004 art.142 lettera c)

Legenda  Fiumi torrenti corsi d'acqua - buffer 150m





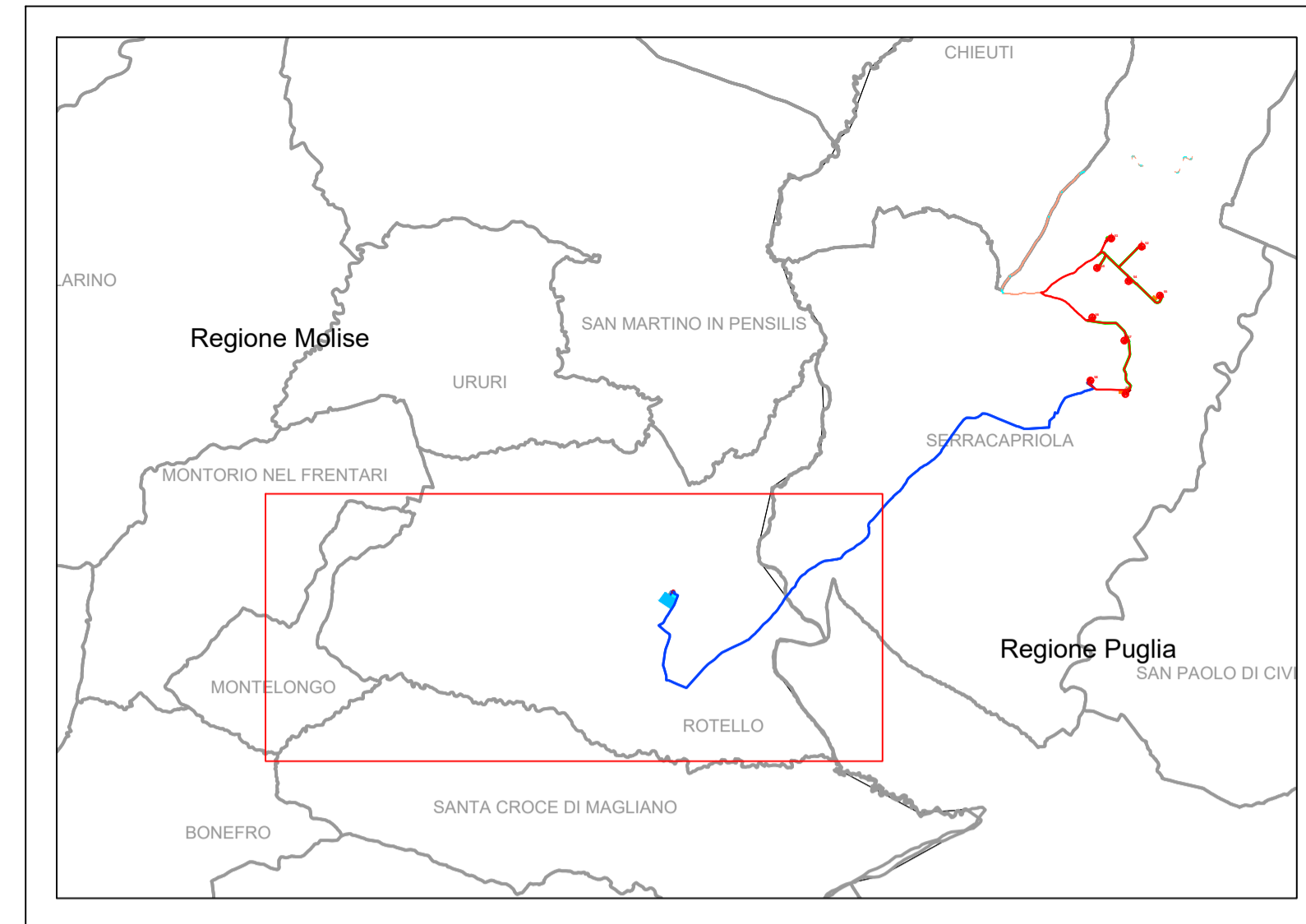
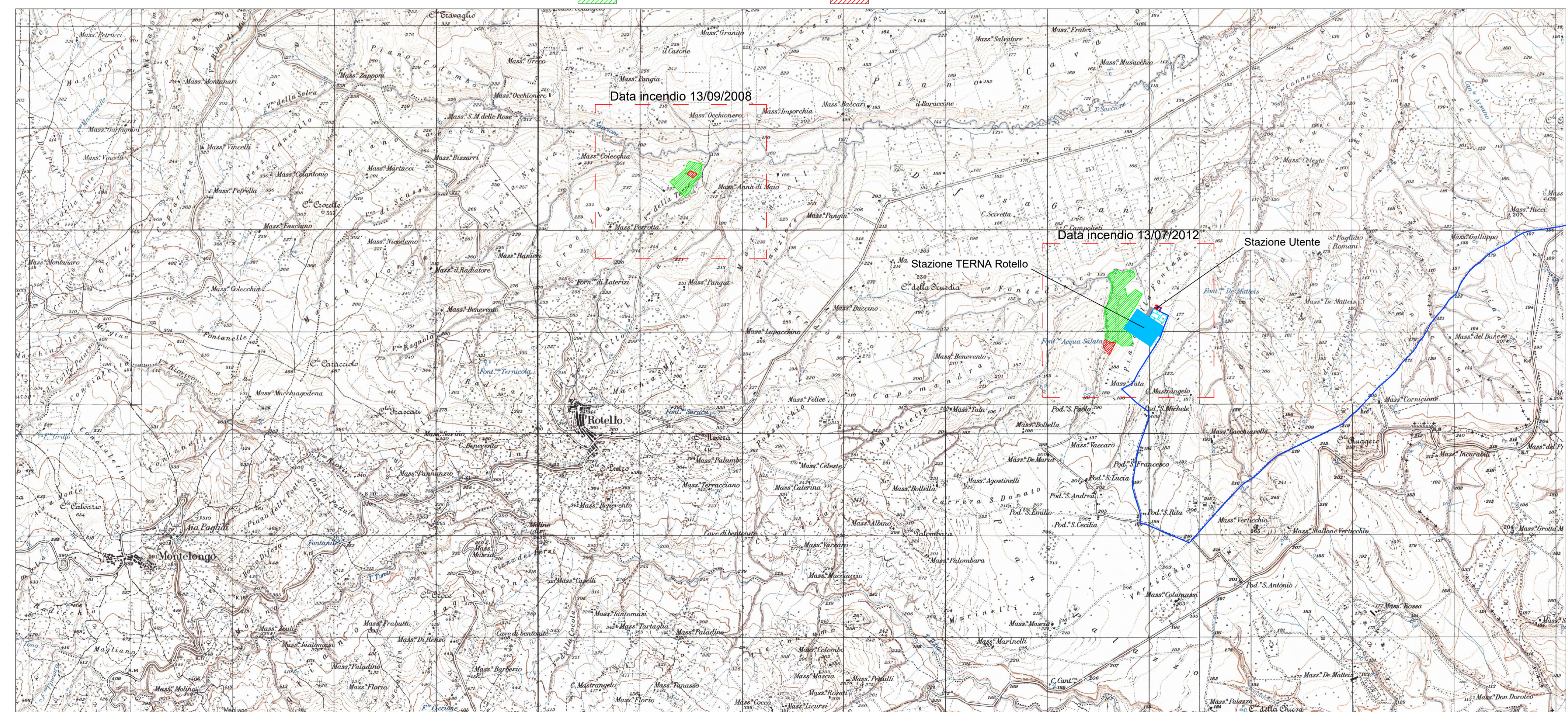
Aree tutelate per legge - D.L.gs.42/2004 art.142 lettera m)

Legenda  Zona di interesse archeologico - Regio Tratturello Celano - Foggia  Zona di interesse archeologico - Beni monumentali



Aree tutelate per legge - D.L.gs.42/2004 art.142 lettera g)

Legenda  Aree percorse dal fuoco non boscate  Aree percorse dal fuoco boscate



Legenda opere di progetto  Cavidotto MT esterno interrato

Kay Plan scala 1:150000

<b>PROPRONTE</b> <b>Repower Renewable Spa</b> Via Lariano, 44 30174 Mestre (VE)		 Energia che ti serve.
<b>PROGETTAZIONE</b> 		<b>TENPROJECT</b> Progettista: Ing. Nicola Forte
<b>N° COMMESSA</b> <b>1416</b>	<b>NUOVO PARCO EOLICO "SERRACAPRIOLA"</b> PROVINCIA DI FOGGIA E CAMPOBASSO COMUNI DI SERRACAPRIOLA (FG) E ROTELLO (CB) PROGETTO DEFINITIVO PER AUTORIZZAZIONE	
<b>ELABORATO</b> Aree tutelate per legge D.L.gs.42/2004: Art.136 - Art.142 lettere c) g) m)		CODICE ELABORATO <b>2.2a</b> NUMERO FILE 418PDS_A_22A_TAV_00
00 11/12/2020 REV. DATA	PRIMA EMISSIONE DESCRIZIONE REVISIONE	PPP RELATIVO
		NF VERIFICA
		NF APPROVAZIONE