




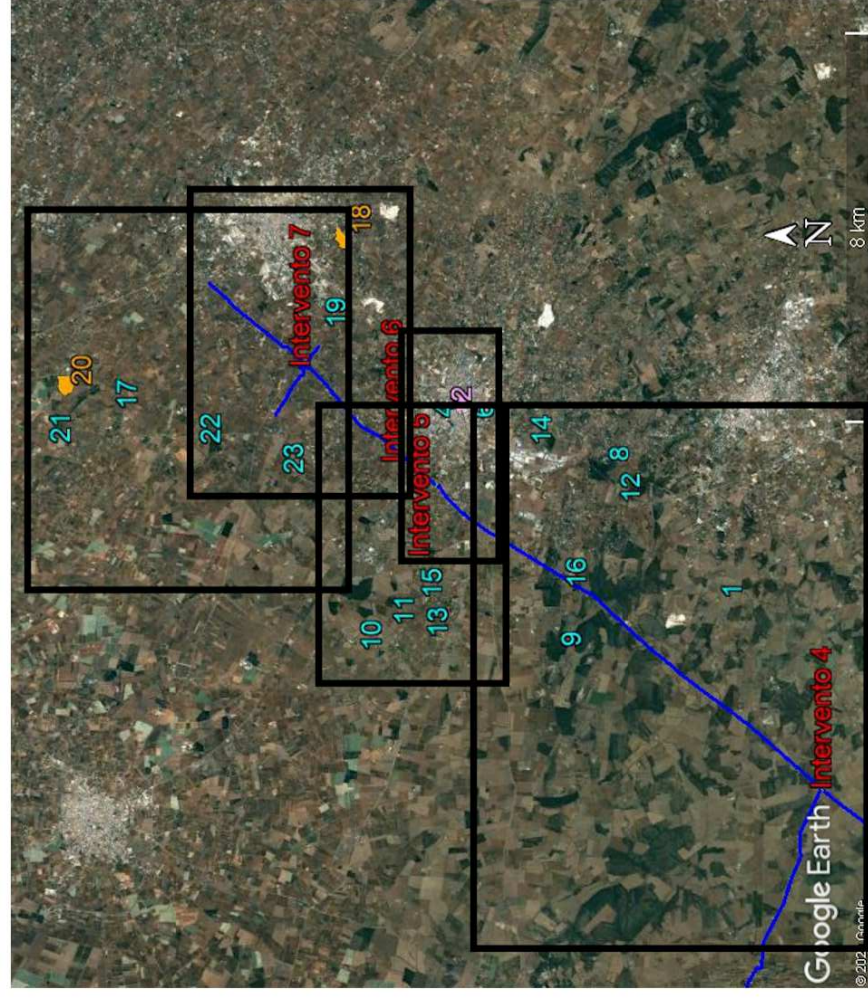



LEGENDA

	interventi in progetto
	metanodotto esistente
	zona di interesse archeologico
	vincolo archeologico
	centro storico



0	12/08/2020	EMMISSIONE	Descrizione	Disegn.	Contr.	Approv.
Proprietario		Progettista		Disegno		
				Al. 1 - 1.1		
Metanodotto: CASTELLANETA-CASTELLANA GROTTE DN 250 (10") - DP 64 bar Variante per inserimento Punto di Intercettazione di Derivazione Importante (P.I.D.I.) 4500480/1.2 in Comune di Castellana (TA)		Revisione		0		
		Comm.		NR/19305		
		Cod.tec				
All. 1 Carta delle evidenze archeologiche con interventi di progetto - 1.1 Quadro generale		Scala		1:2000		