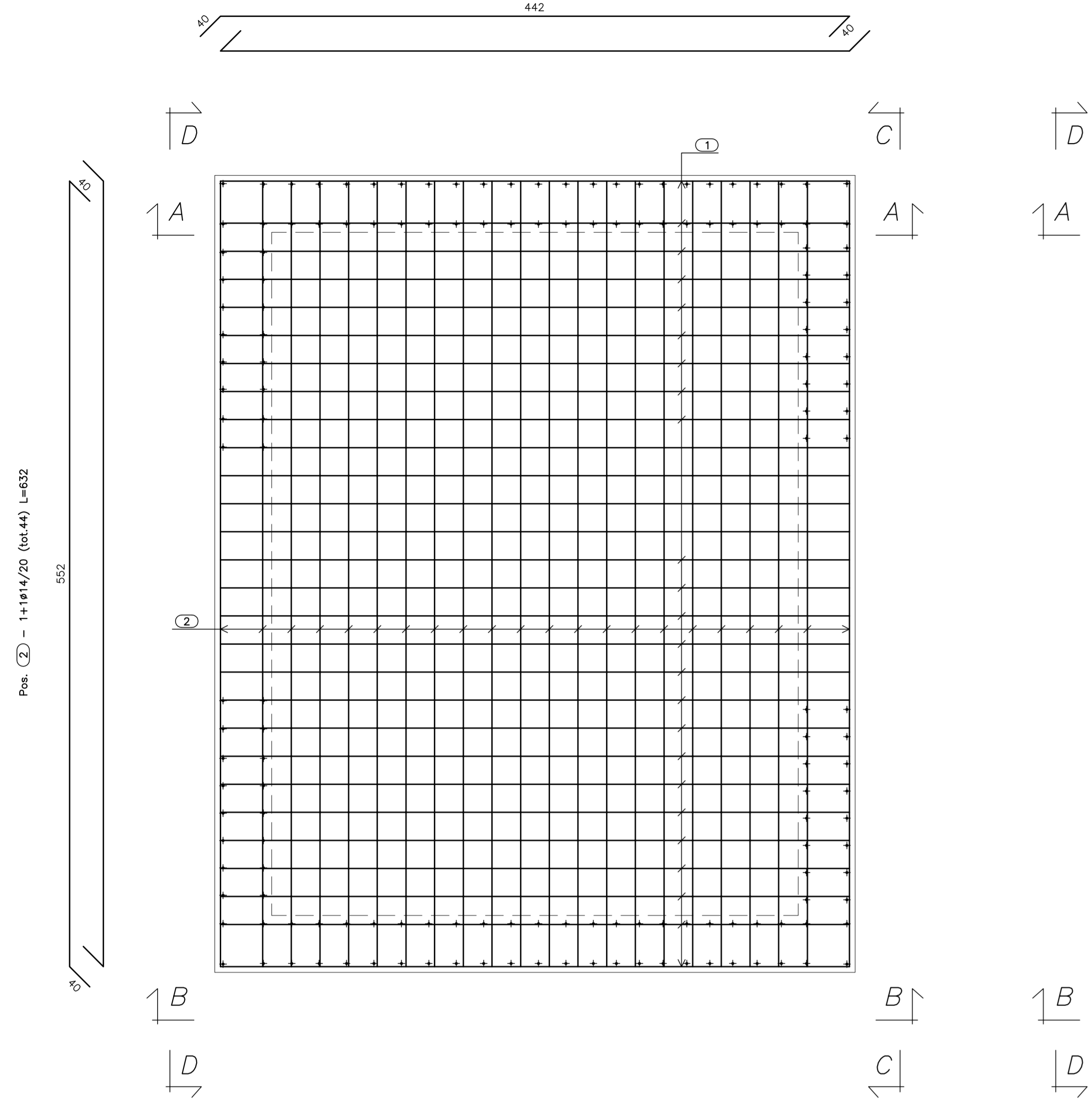
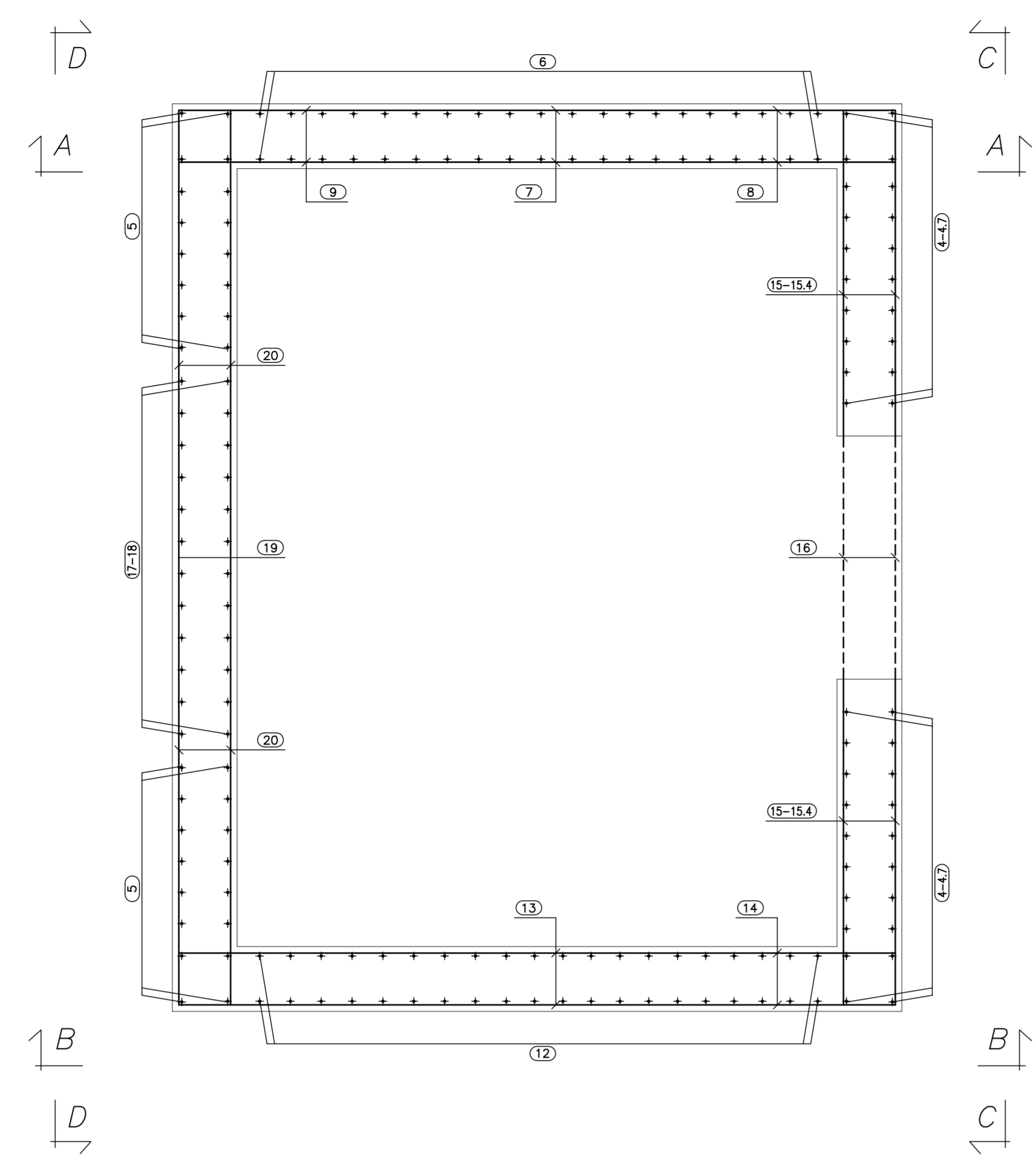


**PIANTA FONDAZIONE**  
(SCALA 1:25)

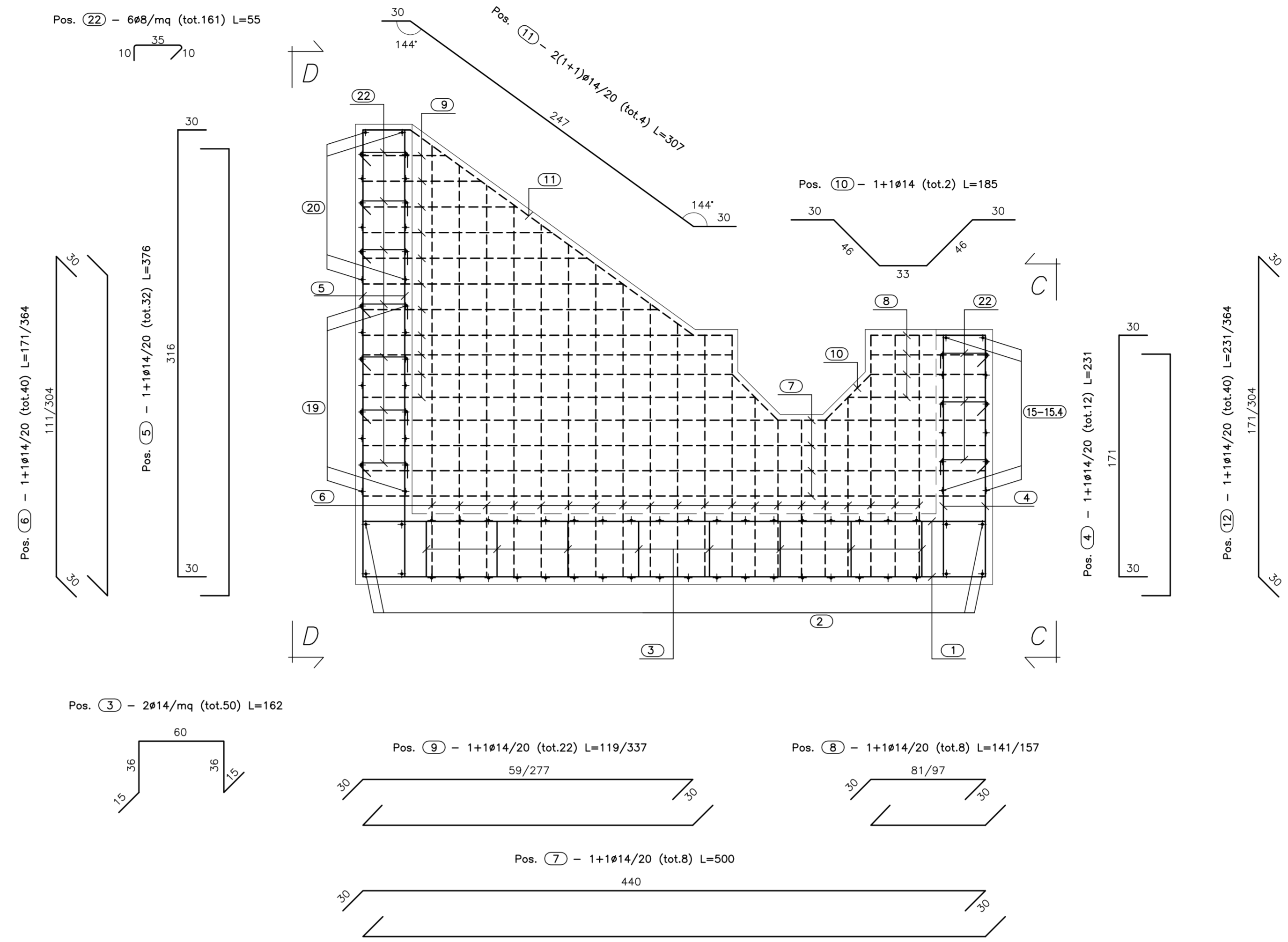
Pos. (1) - 1+1014/20 (tot.50) L=522



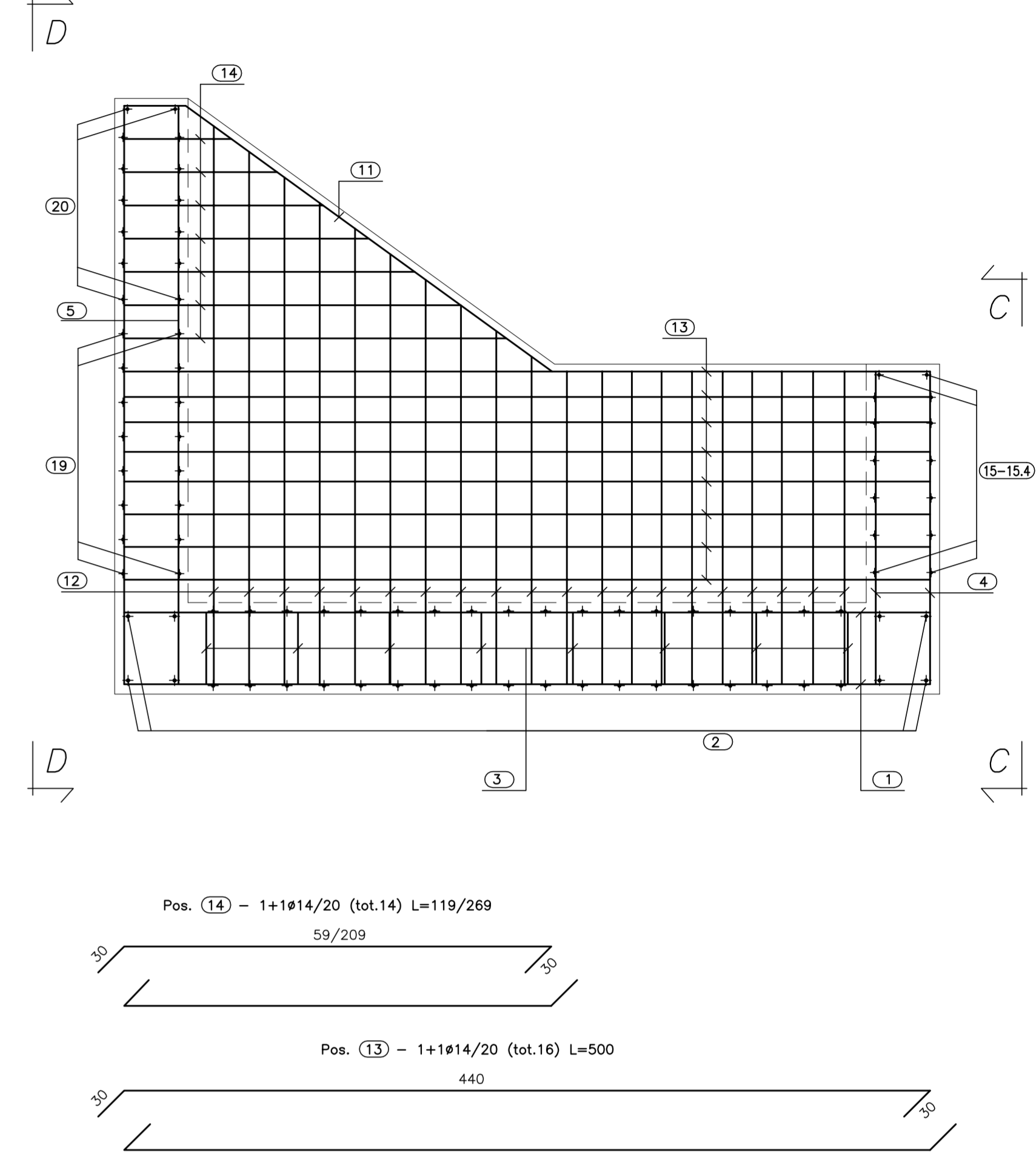
**PIANTA SPICCATO**  
(SCALA 1:25)



**SEZ. A-A**  
(SCALA 1:25)

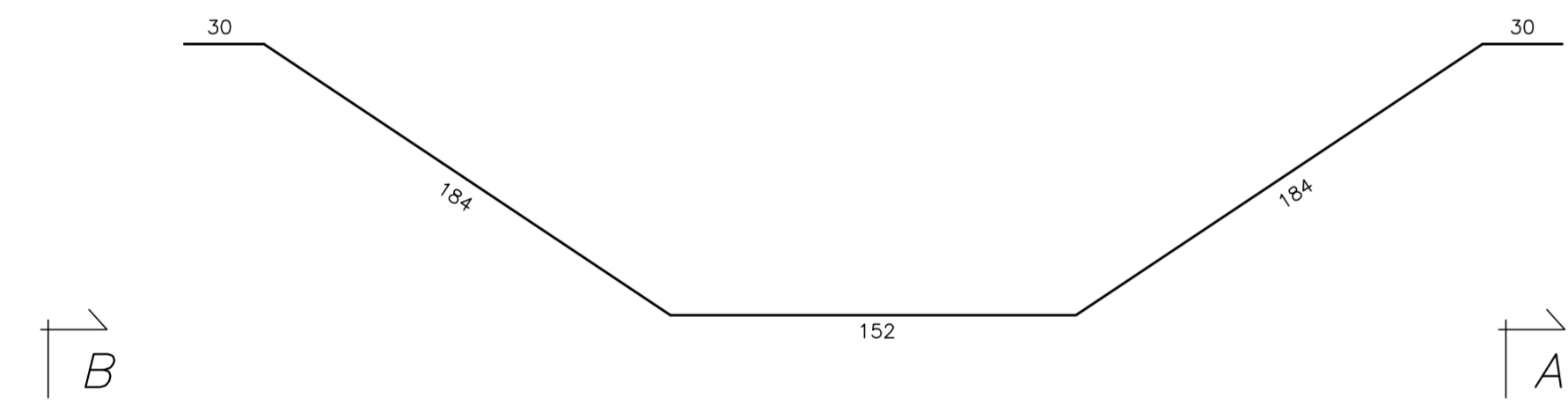


**VISTA. B-B**  
(SCALA 1:25)



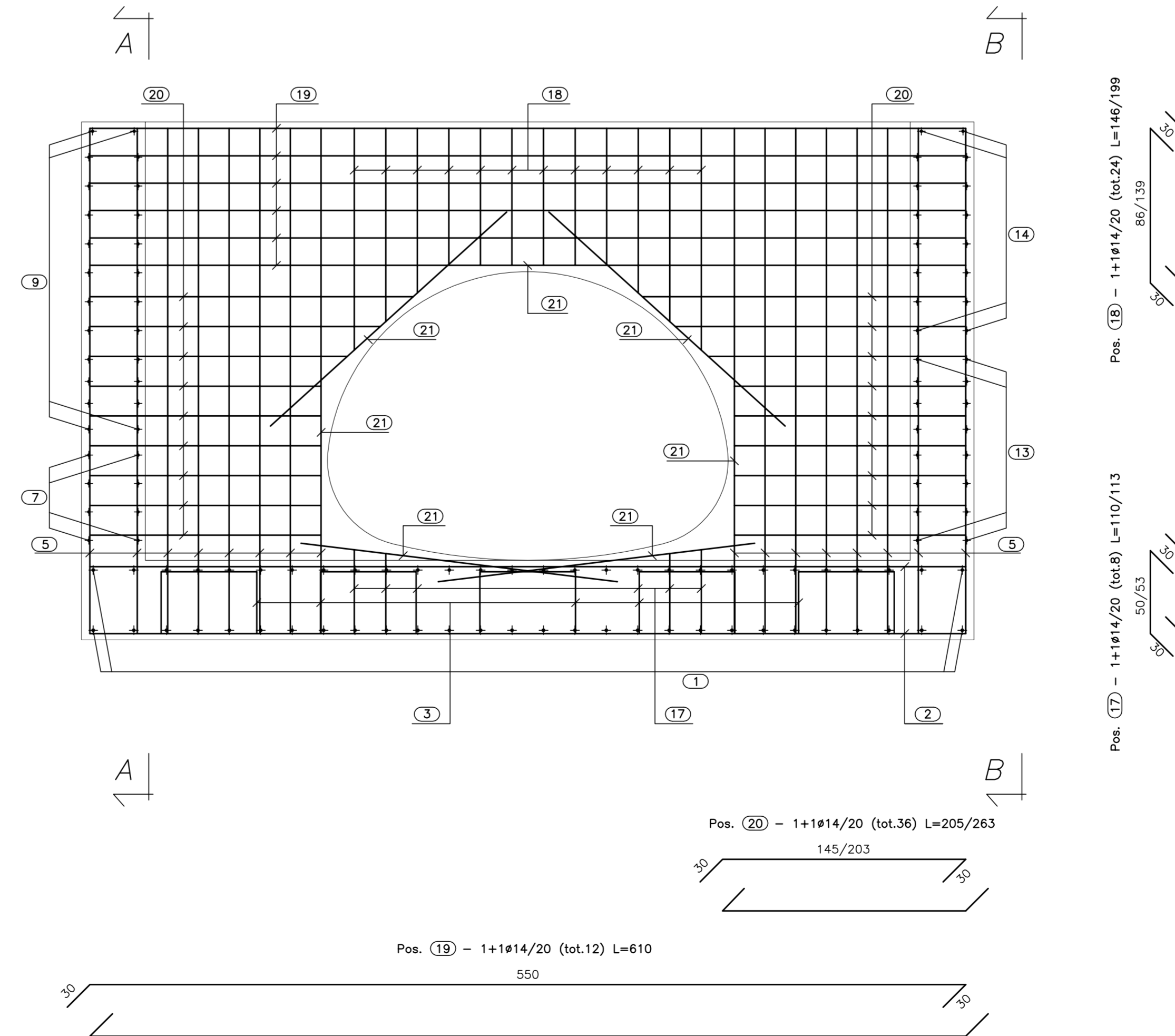
**VISTA. C-C**  
(SCALA 1:25)

Pos. (16) - 1+1014 (tot.2) L=580



**VISTA. D-D**  
(SCALA 1:25)

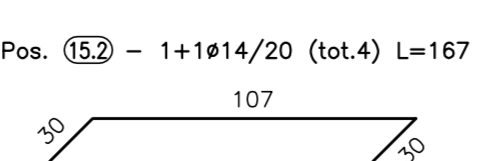
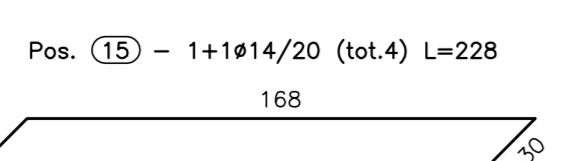
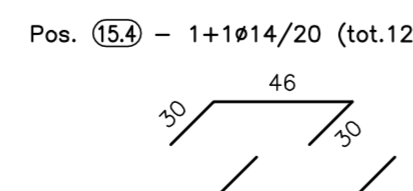
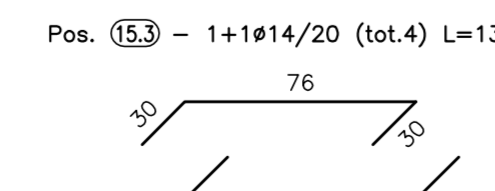
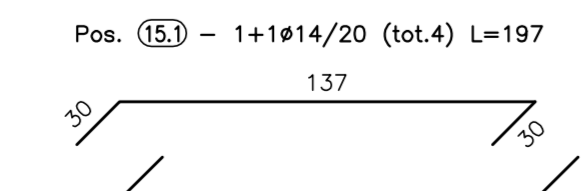
Pos. (21) - 8+0014 (tot.16) L=200



Pos. (15) - 1+1014/20 (tot.4) L=197

Pos. (15) - 1+1014/20 (tot.4) L=136

Pos. (15) - 1+1014/20 (tot.12) L=106



**CALCESTRUZZO (UNI EN 206-1);**  
MAGRONI:  
- CLASSE DI RESISTENZA C12/15  
**STRUTTURE DI FONDAZIONE/ELEVAZIONE:**  
- CLASSE DI RESISTENZA C32/40 (UNI 9858)  
- CLASSE DI ESPOSIZIONE XE2 (UNI EN 206-1)  
- CLASSE DI CONSISTENZA S4 (UNI 9418)  
- COPRIFERRO 40mm  
**DIAMETRO MAX DEGLI AGGREGATI 32 mm**  
**ACCIAIO PER C.A.:**  
- Fe B 44 K Controllato in stabilimento saldabile  
**ACCIAIO PER TUBI ARMCO:**  
- TIPOLOGIA Fe 360 B  
- BULLONI Classe 8.8  
- ZINCO-STRUK applicata a caldo con incidenza non inferiore a 305 g/mq per faccia



PA 12/09  
CORRIDOIO PLURIMODALE TIRRENICO - NORD EUROPA  
ITINERARIO AGRIGENTO - CALTANISSETTA - A19  
S.S. N° 640 "DI PORTO EMPEDOCLE"  
AMMODERNAMENTO E ADEGUAMENTO ALLA CAT. B DEL D.M. 5.11.2001  
Dal km 44+000 allo svincolo con l'A19

**PROGETTO ESECUTIVO**



**OPERE IDRAULICHE**  
OPERE IDRAULICHE VIABILITA' INTERFERITA - Tronco 55  
Tombino 2.41x1.71\_pr.0+040.88 - Armatura Sbocco

Codice Unico Progetto (CUP) : F91B0900070001						
Codice Elaborato: PA12_09 - E 0 0 0   N 2 5 5   T T 4 6   H B Z 0 0 3   A						
REV.	DATA	DESCRIZIONE	REDAITTO	VERIFICATO	APPROVATO	AUTORIZZATO
A	Aprile 2011	EMISSIONE	A. SALVAGO	A. TURSO	M. LITI	P. PAGLINI
Responsabile del procedimento: Ing. MAURIZIO ANTONIO						

