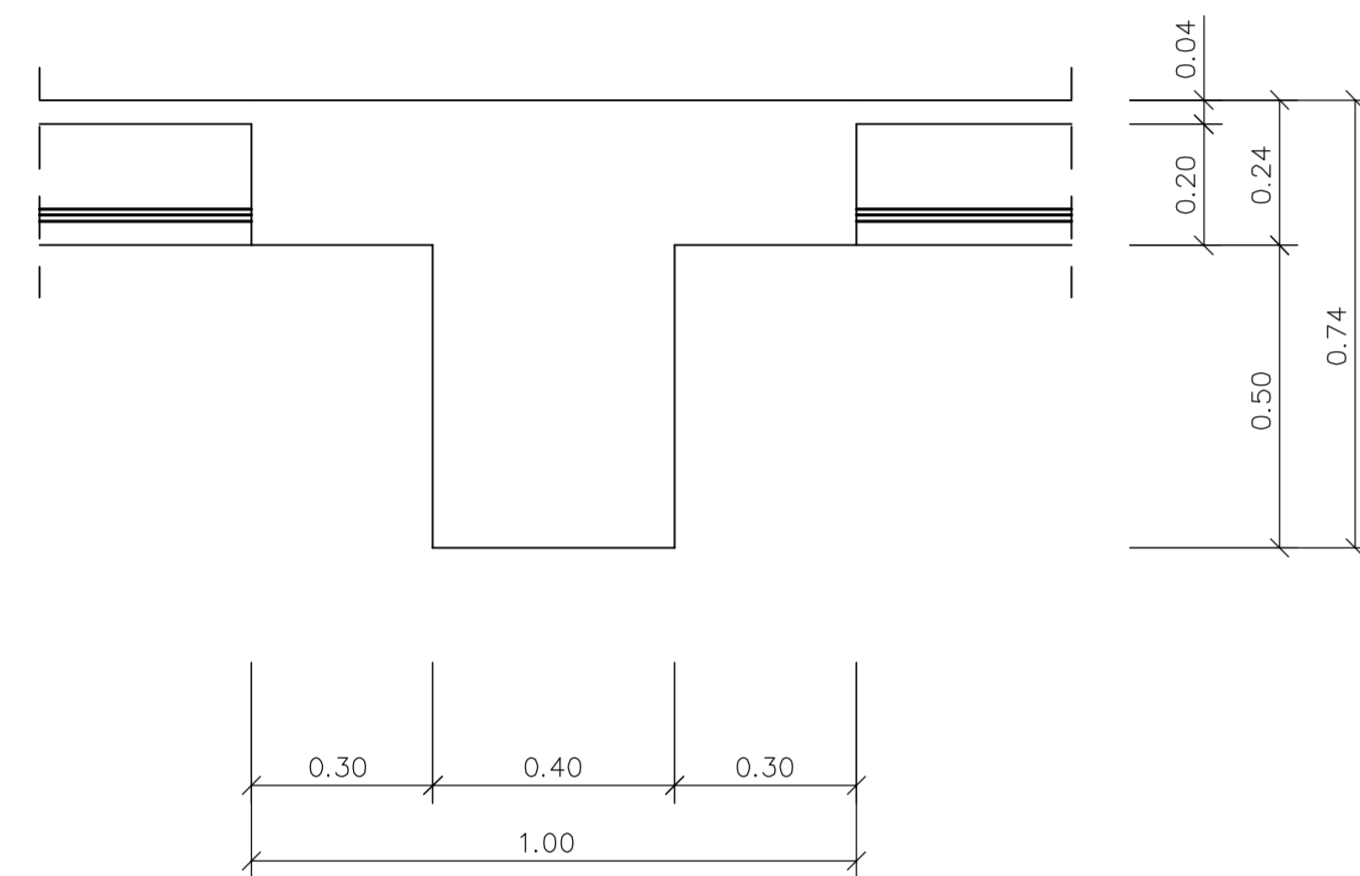


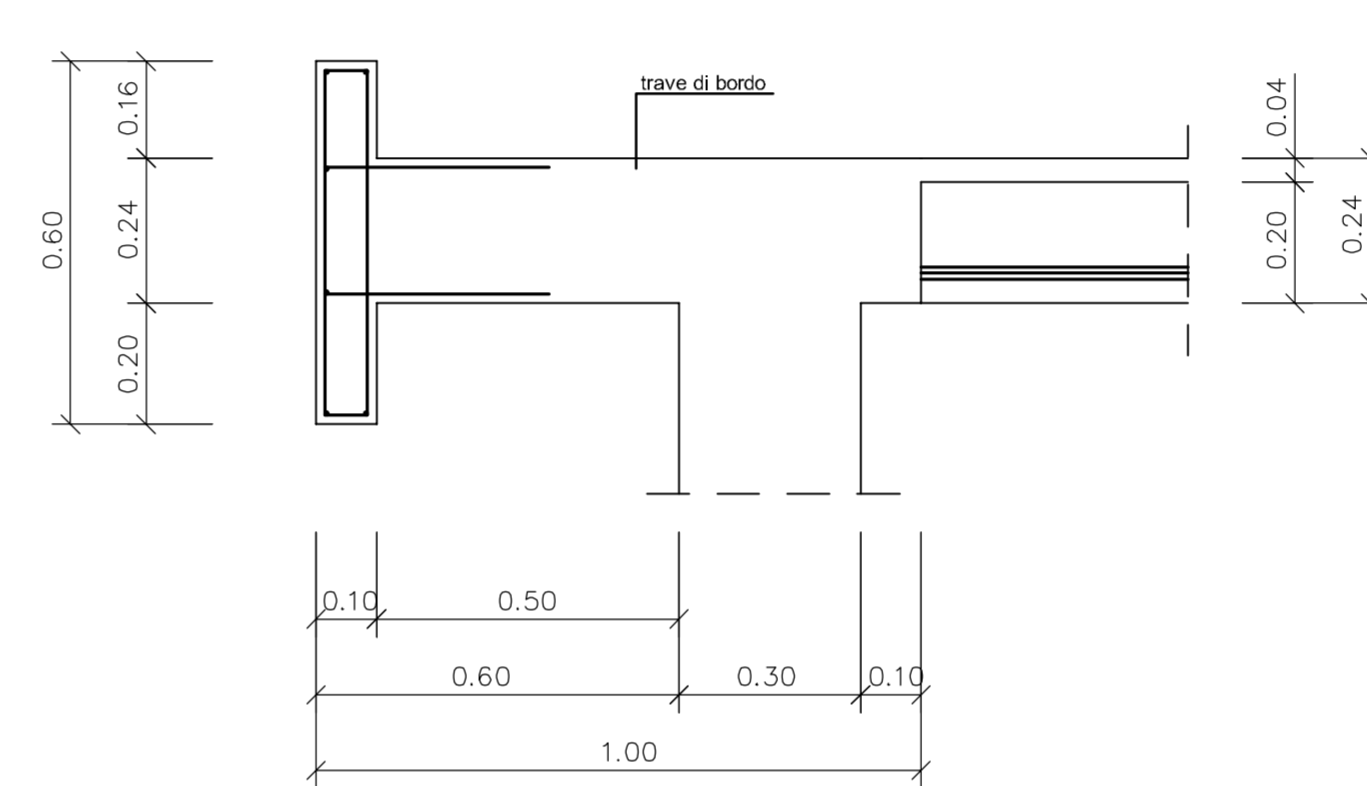
TABELLA MATERIALI

CALCESTRUZZO MAGRO	
Conglomerato cementizio	: classe di resistenza C12/15
CALCESTRUZZO	
Conglomerato cementizio	: classe di resistenza C28/35 classe di consistenza S4 granulometria max degli inerti 30 mm
ACCIAIO	
Acciaio in barre ad aderenza migliorata	: B450C
Copriferro	: 40 mm
Sovrapposizioni	: ≥ 60Ø

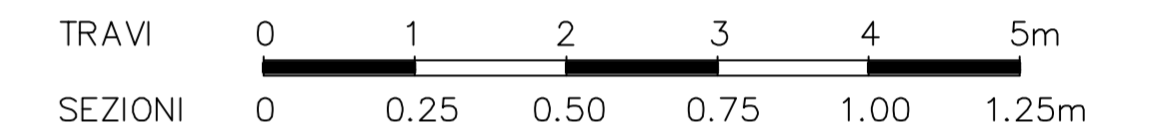
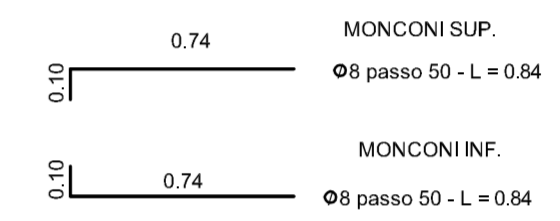
T1



T2 - T3 - T4 - T5 - T6 - T7



STAFFE
Ø8 passo 50 - L = 1.44



T8-T14 1.00x0.24

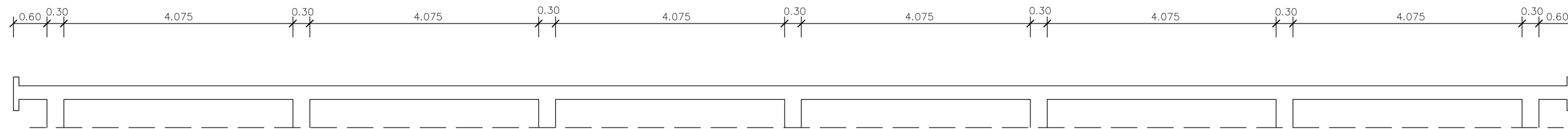
T9-T15 1.00x0.24

T10-T16 1.00x0.24

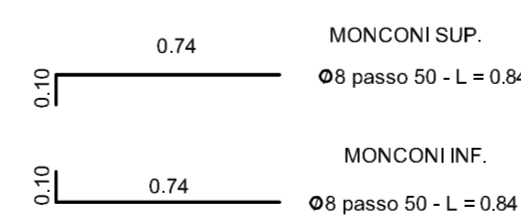
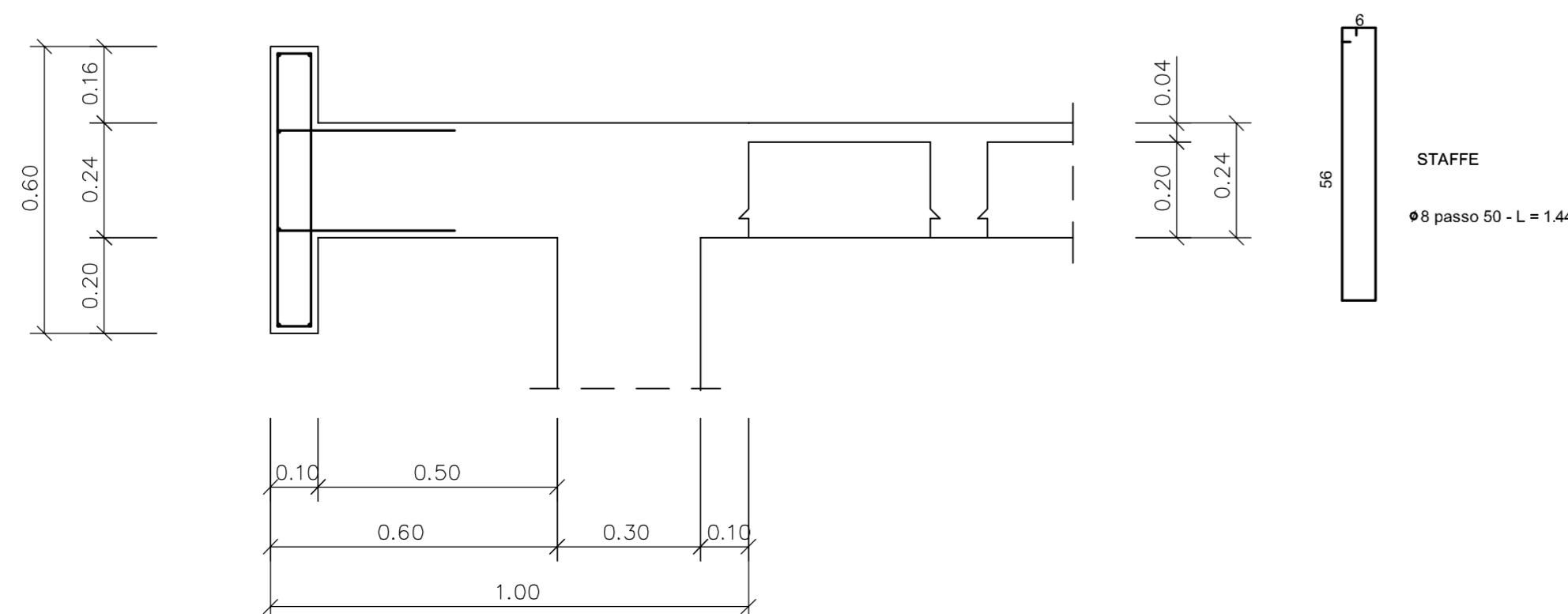
T11-T17 1.00x0.24

T12-T18 1.00x0.24

T13-T19 1.00x0.24

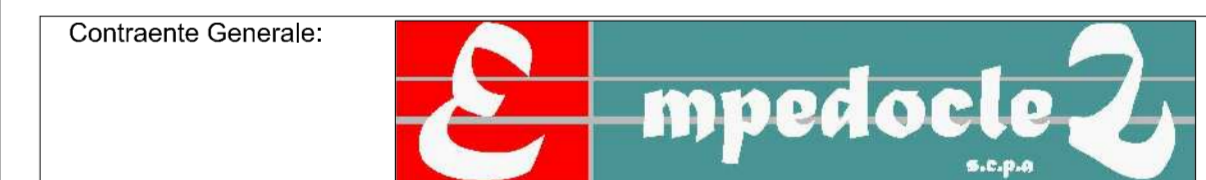


T8 - T9 - T10 - T11 - T12 - T13
T14 - T15 - T16 - T17 - T18 - T19



PA 12/09
CORRIDOIO PLURIMODALE TIRRENICO - NORD EUROPA
ITINERARIO AGRIGENTO - CALTANISSETTA - A19
S.S. N° 640 "DI PORTO EMPEDOCLE"
AMMODERNAMENTO E ADEGUAMENTO ALLA CAT. B DEL D.M. 5.11.2001
Dal km 44+000 allo svincolo con l'A19

PROGETTO ESECUTIVO



CABINA ELETTRICA K4 - K5
TRAVI DI COPERTURA

Codice Unico Progetto (CUP) : F91B0900070001					
Codice Elaborato: PA12_09 - E 0 0 0 I S 2 0 0 I S 0 9 K P B 0 1 5 A					
F					
E					
D					
C					
B					
A	Aprile 2011	EMISSIONE	R. TARSÌ	G. MONORCHIO	M. LITI
REV.	DATA	DESCRIZIONE	REDATTO	VERIFICATO	APPROVATO
Responsabile del procedimento: Ing. MAURIZIO ARAMINI					

