

TITLE:

AVAILABLE LANGUAGE: IT

# COSTRUZIONE DELL'IMPIANTO EOLICO DI "TRAPANI 2"

## PROGETTO DEFINITIVO

### Cronoprogramma



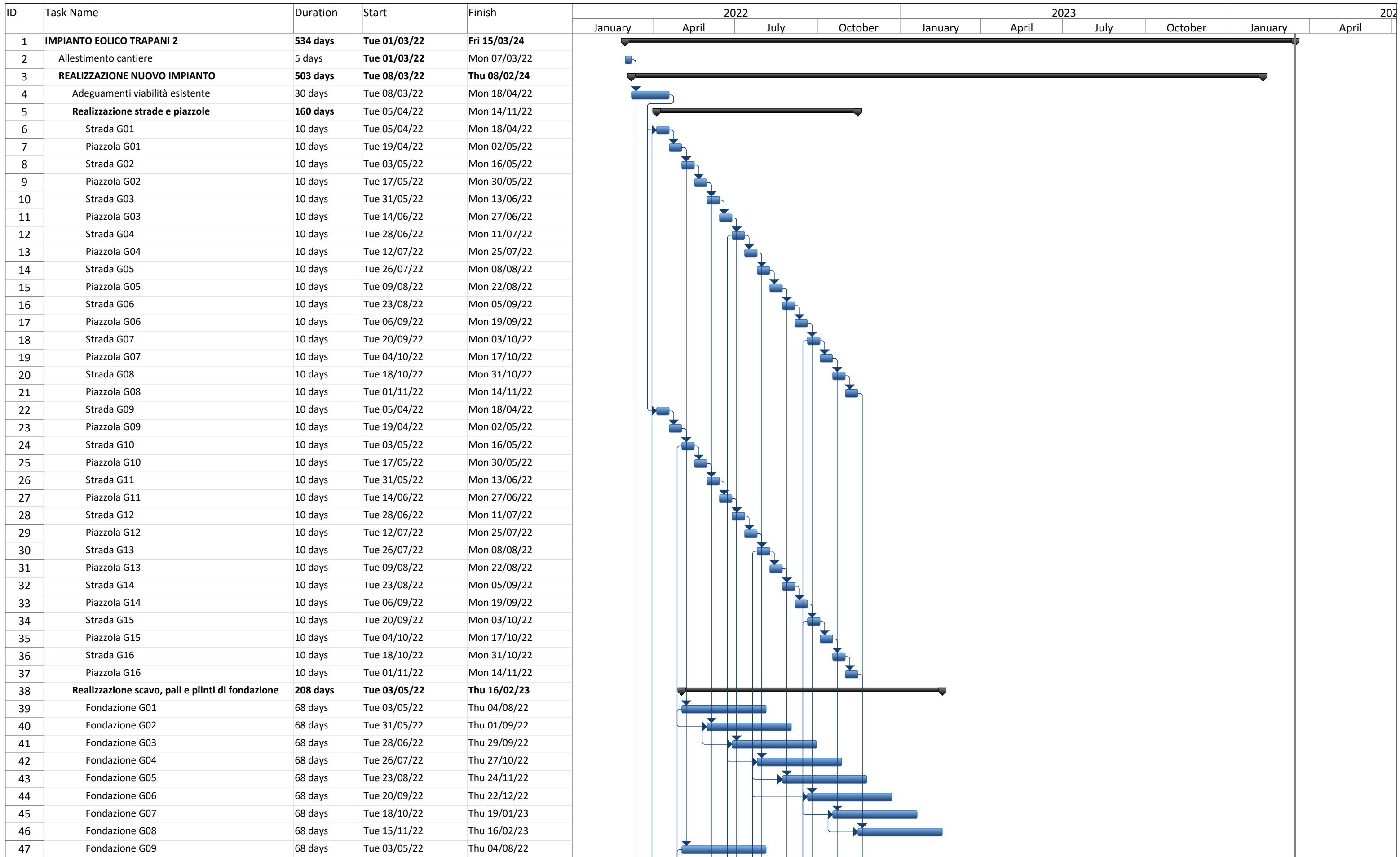
File: GRE.EEC.R.73.IT.W.13824.00.033.00 - Cronoprogramma.pdf

REV.	DATE	DESCRIPTION	PREPARED	VERIFIED	APPROVED
00	18/12/2020	Prima emissione	D. Gradogna	E. Castiello	L. Lavazza

**GRE VALIDATION**

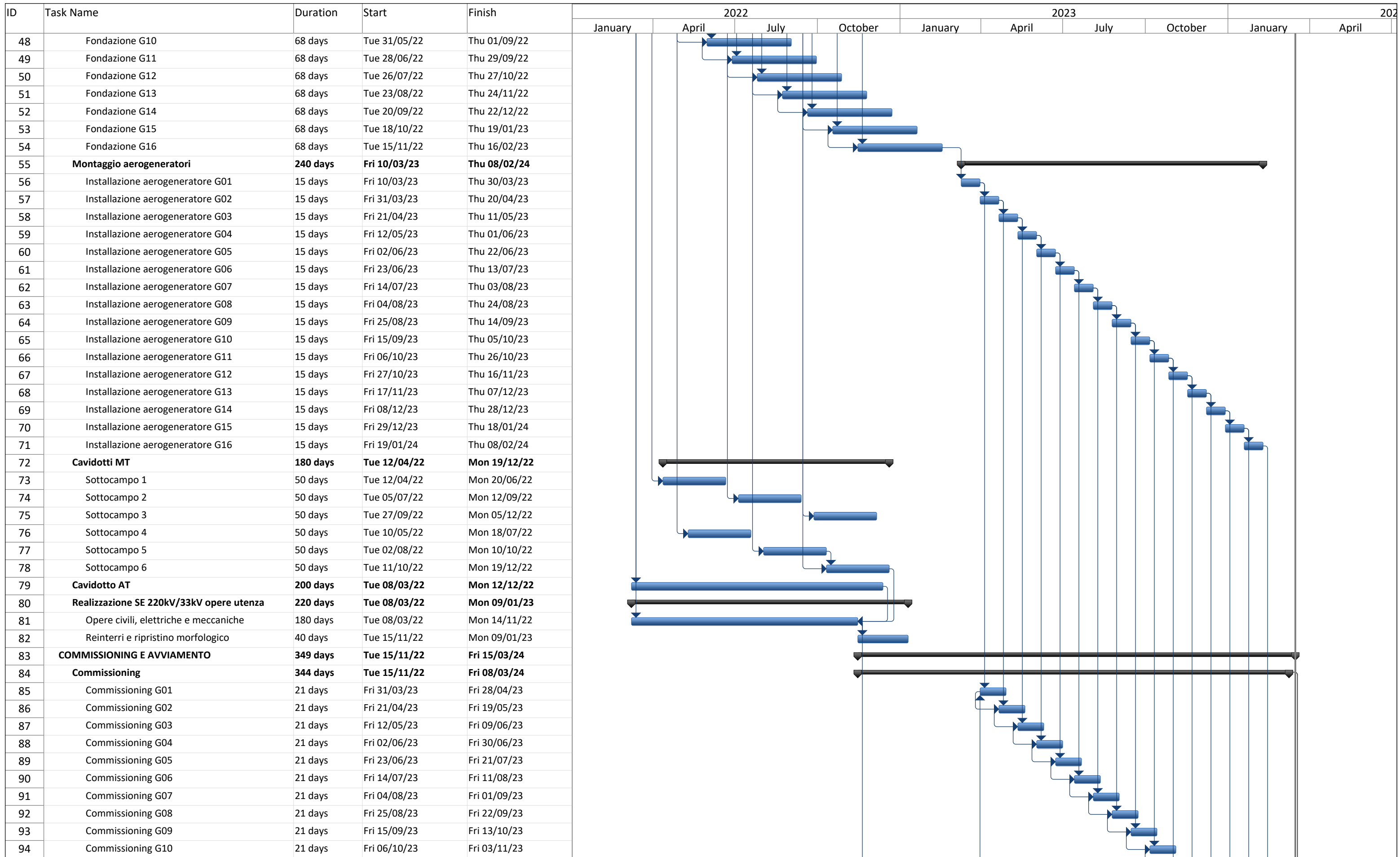
	Support Team (GRE)	A. Puosi (GRE)
COLLABORATORS	VERIFIED BY	VALIDATED BY

PROJECT / PLANT <b>Trapani 2</b>	GRE CODE																			
	GROUP	FUNCION	TYPE	ISSUER	COUNTRY	TEC	PLANT				SYSTEM	PROGRESSIVE	REVISION							
	<b>GRE</b>	<b>EEC</b>	<b>R</b>	<b>7</b>	<b>3</b>	<b>I</b>	<b>T</b>	<b>W</b>	<b>1</b>	<b>3</b>	<b>8</b>	<b>2</b>	<b>4</b>	<b>0</b>	<b>0</b>	<b>0</b>	<b>3</b>	<b>3</b>	<b>0</b>	<b>0</b>
CLASSIFICATION	<b>PUBLIC</b>					UTILIZATION SCOPE	<b>BASIC DESIGN</b>													



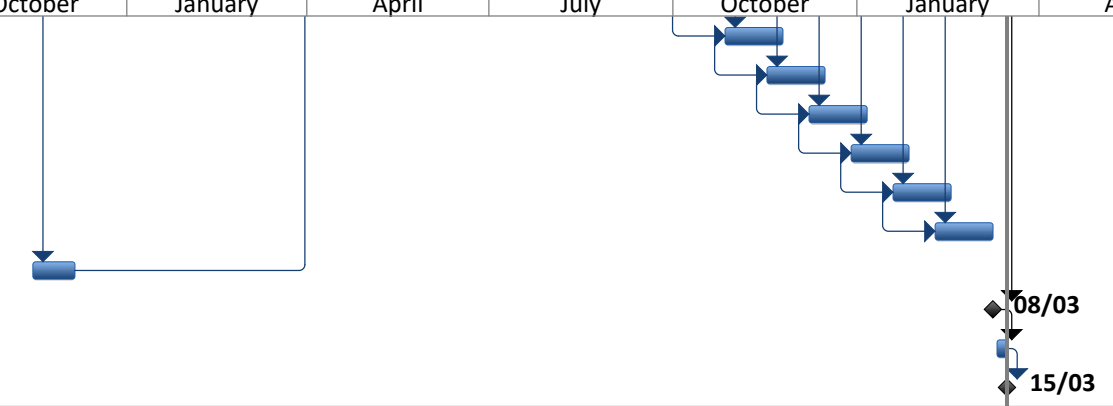
Project: Cronoprogramma  
Date: Fri 11/12/20

Task		Project Summary		Inactive Milestone		Manual Summary Rollup		Deadline	
Split		External Tasks		Inactive Summary		Manual Summary		Progress	
Milestone		External Milestone		Manual Task		Start-only		Slippage	
Summary		Inactive Task		Duration-only		Finish-only			



Project: Cronoprogramma Date: Fri 11/12/20	Task		Project Summary		Inactive Milestone		Manual Summary Rollup		Deadline	
	Split		External Tasks		Inactive Summary		Manual Summary		Progress	
	Milestone		External Milestone		Manual Task		Start-only		Slippage	
	Summary		Inactive Task		Duration-only		Finish-only			

ID	Task Name	Duration	Start	Finish	2022				2023				2024		
					January	April	July	October	January	April	July	October		January	April
95	Commissioning G11	21 days	Fri 27/10/23	Fri 24/11/23											
96	Commissioning G12	21 days	Fri 17/11/23	Fri 15/12/23											
97	Commissioning G13	21 days	Fri 08/12/23	Fri 05/01/24											
98	Commissioning G14	21 days	Fri 29/12/23	Fri 26/01/24											
99	Commissioning G15	21 days	Fri 19/01/24	Fri 16/02/24											
100	Commissioning G16	21 days	Fri 09/02/24	Fri 08/03/24											
101	Commissioning SSE	15 days	Tue 15/11/22	Mon 05/12/22											
102	1° parallelo con rete elettrica	0 days	Fri 08/03/24	Fri 08/03/24											
103	Avviamento	5 days	Mon 11/03/24	Fri 15/03/24											
104	Entrata in esercizio - COD	0 days	Fri 15/03/24	Fri 15/03/24											



Project: Cronoprogramma Date: Fri 11/12/20	Task		Project Summary		Inactive Milestone		Manual Summary Rollup		Deadline	
	Split		External Tasks		Inactive Summary		Manual Summary		Progress	
	Milestone		External Milestone		Manual Task		Start-only		Slippage	
	Summary		Inactive Task		Duration-only		Finish-only			