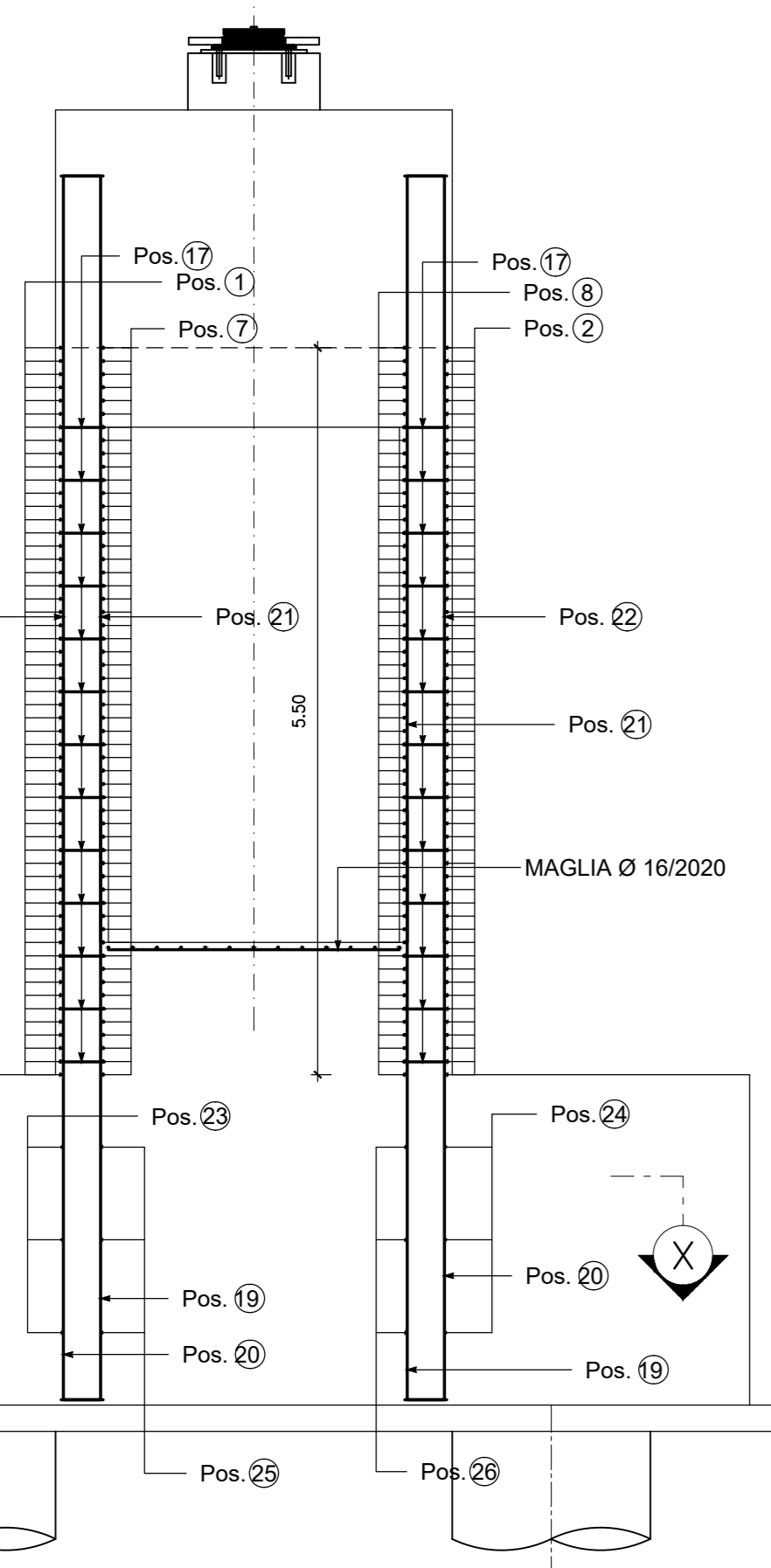


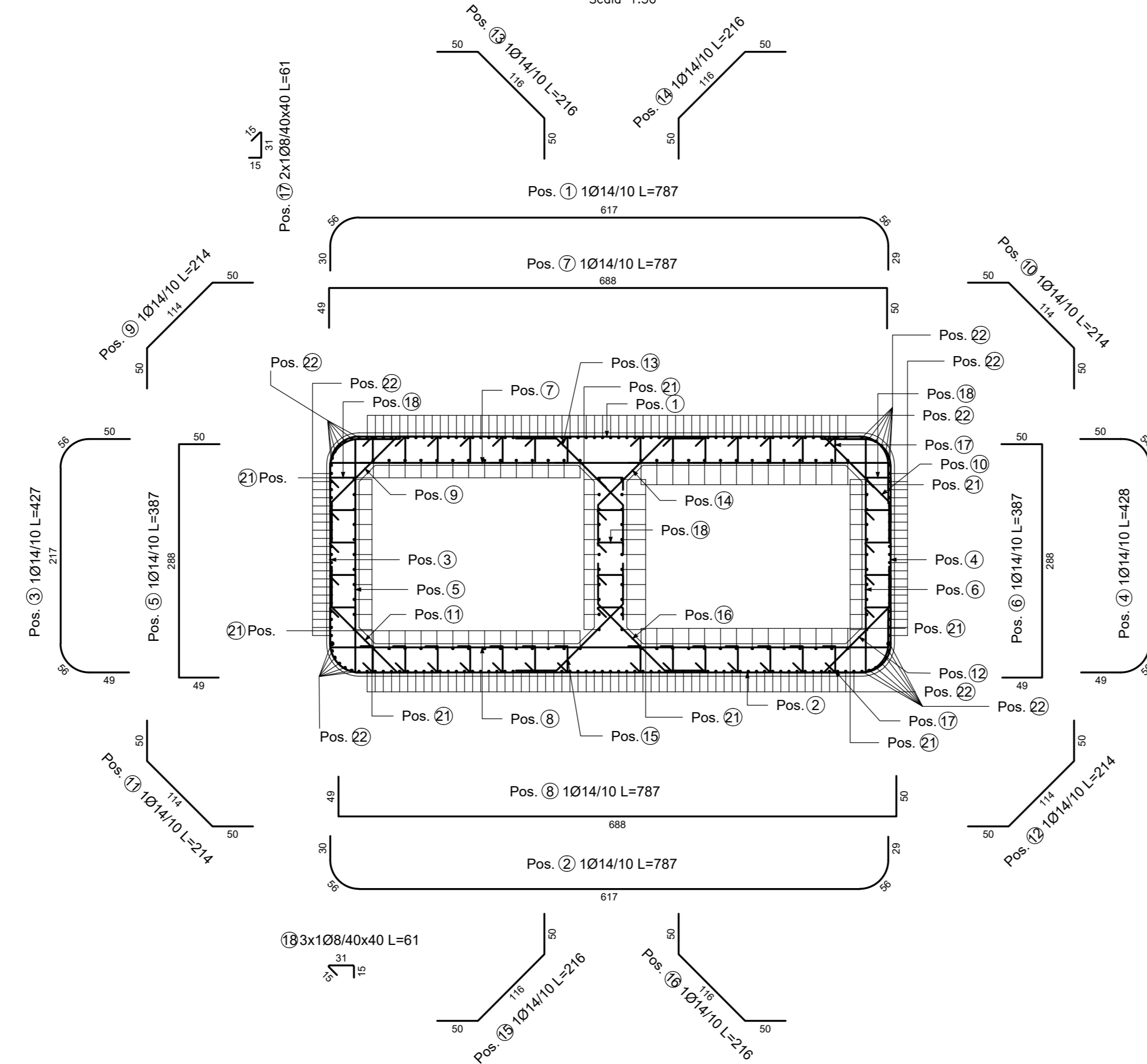
ARMATURA FUSTO P1

Scala 1:50



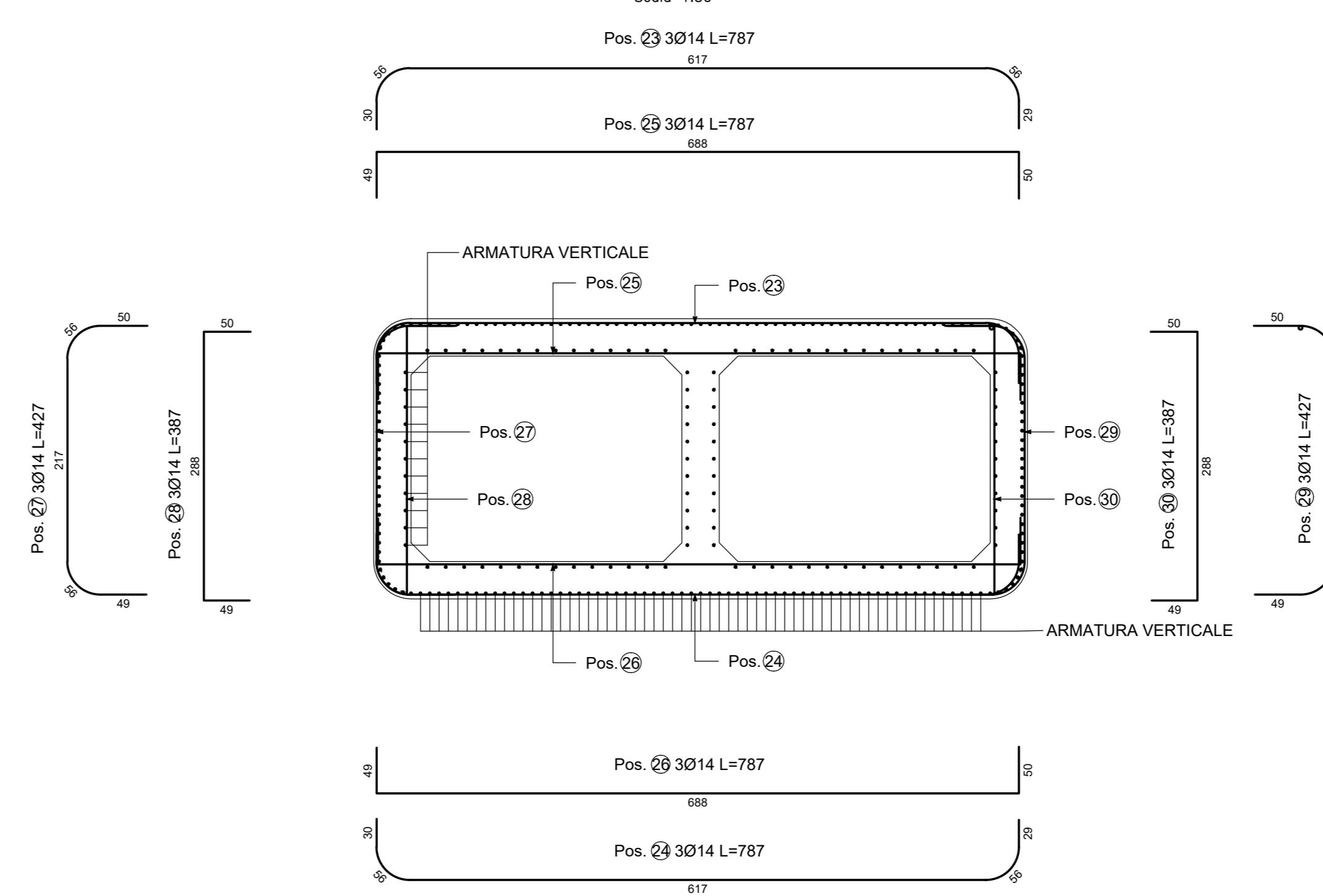
SEZIONE ORIZZONTALE

Scala 1:50



SEZIONE X-X

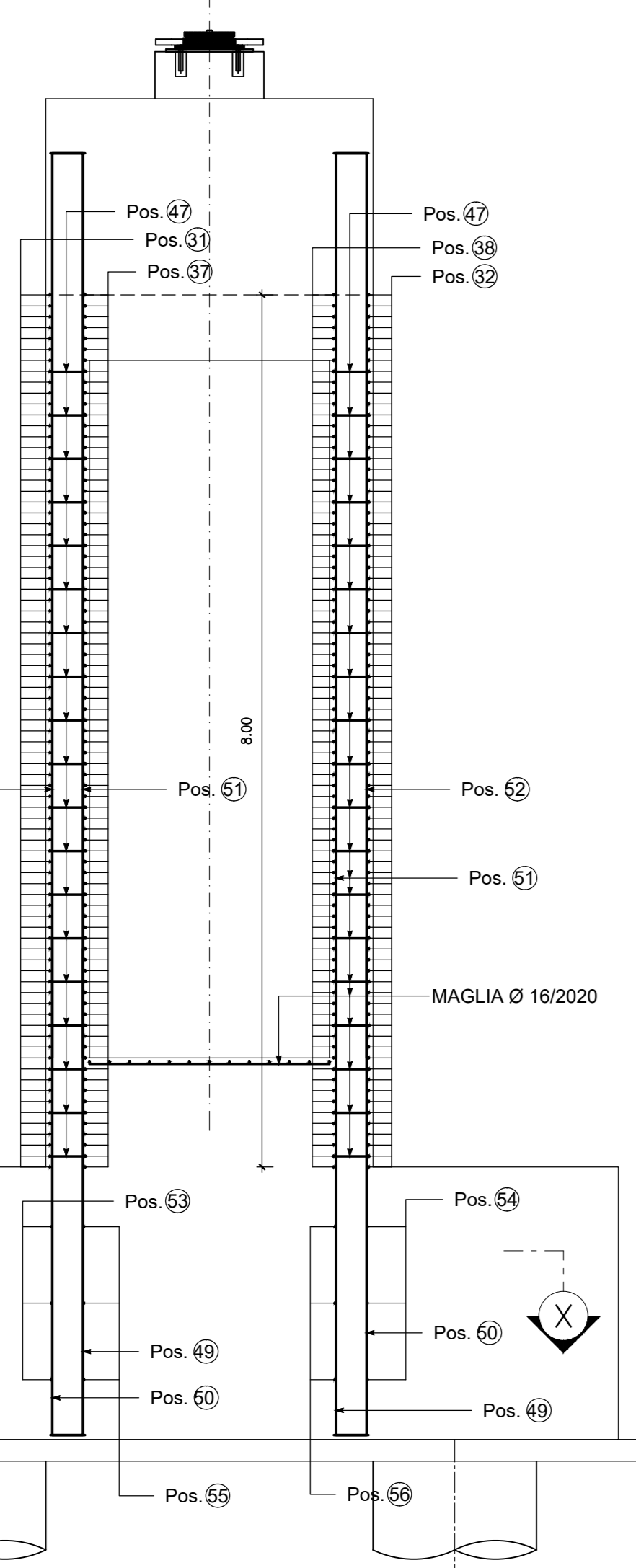
Scala 1:50



POS. CODICE	BAR DIR.	N.	Ø [mm]	L [cm]	L TOT [m]	PESO [kg]	CODICE	A B C D E/R					SCHEMA PIEGATURA (misure al filo esterno)	POS. CODICE	BAR DIR.	N.	Ø [mm]	L [cm]	L TOT [m]	PESO [kg]	CODICE	A B C D E/R					SCHEMA PIEGATURA (misure al filo esterno)	POS. CODICE	BAR DIR.	N.	Ø [mm]	L [cm]	L TOT [m]	PESO [kg]	CODICE	A B C D E/R					SCHEMA PIEGATURA (misure al filo esterno)																																																								
								F	G	H	I	J										F	G	H	I	J										F	G	H	I	J																																																									
Pos. 1	56	14	787.2	236.2	28.53	454	30	55.6	617	55.6	29	Pos. 12	56	14	214.0	119.84	144.77	252	50	114	50	Pos. 23	3	14	787.2	23.62	28.53	454	30	55.6	617	55.6	29	Pos. 24	3	14	787.2	23.62	28.53	454	30	55.6	617	55.6	29																																																				
Pos. 2	56	14	787.2	440.84	532.53	454	30	55.6	617	55.6	29	Pos. 13	56	14	216.0	120.96	146.12	252	50	116	50	Pos. 24	3	14	787.2	23.62	28.53	454	30	55.6	617	55.6	29	Pos. 25	1	14	786.8	7.87	9.50	252	49	687.8	50	Pos. 26	1	14	786.8	7.87	9.50	252	49	687.8	50	Pos. 27	1	14	427.2	4.27	5.16	212	49	687.8	50	Pos. 28	3	14	386.8	11.60	14.02	252	49	287.8	50	Pos. 29	1	14	427.2	4.27	5.16	454	49	55.6	217	55.6	34	Pos. 30	1	14	386.8	3.87	4.67	212	49	287.8	50		
Pos. 3	56	14	427.2	239.23	288.99	454	50	50	50	50	34	Pos. 14	56	14	216.0	120.96	146.12	252	50	116	50	Pos. 15	56	14	216.0	120.96	146.12	252	50	116	50	Pos. 16	56	14	216.0	120.96	146.12	252	50	116	50	Pos. 17	364	8	61.0	222.04	87.71	292	15	31	15	Pos. 18	210	8	61.0	128.10	50.60	292	15	31	15	Pos. 19	100	20	476.0	476.00	1173.82	111	30	446	Pos. 20	190	20	576.0	1094.40	2698.79	151	30	546	Pos. 21	100	20	609.7	609.68	1503.47	151	30	579.7	Pos. 22	190	20	609.7	1158.39	2856.59	111	30	579.7
Pos. 4	56	14	428.3	239.88	289.77	454	50	50	50	50	34	Pos. 15	56	14	216.0	120.96	146.12	252	50	116	50	Pos. 16	56	14	216.0	120.96	146.12	252	50	116	50	Pos. 17	364	8	61.0	222.04	87.71	292	15	31	15	Pos. 18	210	8	61.0	128.10	50.60	292	15	31	15	Pos. 19	100	20	476.0	476.00	1173.82	111	30	446	Pos. 20	190	20	576.0	1094.40	2698.79	151	30	546	Pos. 21	100	20	609.7	609.68	1503.47	151	30	579.7	Pos. 22	190	20	609.7	1158.39	2856.59	111	30	579.7										
Pos. 5	56	14	386.8	216.61	261.66	252	49	287.8	50	Pos. 16	56	14	216.0	120.96	146.12	252	50	116	50	Pos. 17	364	8	61.0	222.04	87.71	292	15	31	15	Pos. 18	210	8	61.0	128.10	50.60	292	15	31	15	Pos. 19	100	20	476.0	476.00	1173.82	111	30	446	Pos. 20	190	20	576.0	1094.40	2698.79	151	30	546	Pos. 21	100	20	609.7	609.68	1503.47	151	30	579.7	Pos. 22	190	20	609.7	1158.39	2856.59	111	30	579.7																						
Pos. 6	56	14	386.8	216.61	261.66	212	49	287.8	50	Pos. 17	364	8	61.0	222.04	87.71	292	15	31	15	Pos. 18	210	8	61.0	128.10	50.60	292	15	31	15	Pos. 19	100	20	476.0	476.00	1173.82	111	30	446	Pos. 20	190	20	576.0	1094.40	2698.79	151	30	546	Pos. 21	100	20	609.7	609.68	1503.47	151	30	579.7	Pos. 22	190	20	609.7	1158.39	2856.59	111	30	579.7																																
Pos. 7	56	14	786.8	440.61	532.25	252	49	687.8	50	Pos. 18	210	8	61.0	128.10	50.60	292	15	31	15	Pos. 19	100	20	476.0	476.00	1173.82	111	30	446	Pos. 20	190	20	576.0	1094.40	2698.79	151	30	546	Pos. 21	100	20	609.7	609.68	1503.47	151	30	579.7	Pos. 22	190	20	609.7	1158.39	2856.59	111	30	579.7																																										
Pos. 8	56	14	786.8	440.61	532.25	212	49	687.8	50	Pos. 19	100	20	476.0	476.00	1173.82	111	30	446	Pos. 20	190	20	576.0	1094.40	2698.79	151	30	546	Pos. 21	100	20	609.7	609.68	1503.47	151	30	579.7	Pos. 22	190	20	609.7	1158.39	2856.59	111	30	579.7																																																				
Pos. 9	56	14	214.0	119.84	144.77	252	50	114	50	Pos. 20	190	20	576.0	1094.40	2698.79	151	30	546	Pos. 21	100	20	609.7	609.68	1503.47	151	30	579.7	Pos. 22	190	20	609.7	1158.39	2856.59	111	30	579.7																																																													
Pos. 10	56	14	214.0	119.84	144.77	252	50	114	50	Pos. 21	100	20	609.7	609.68	1503.47	151	30	579.7	Pos. 22	190	20	609.7	1158.39	2856.59	111	30	579.7	Pos. 23	3	14	787.2	23.62	28.53	454	30	55.6	617	55.6	29	Pos. 24	3	14	787.2	23.62	28.53	454	30	55.6	617	55.6	29																																														
Pos. 11	56	14	214.0	119.84	144.77	252	50	114	50	Pos. 22	190	20	609.7	1158.39	2856.59	111	30	579.7	Pos. 23	3	14	787.2	23.62	28.53	454	30	55.6	617	55.6	29	Pos. 24	3	14	787.2	23.62	28.53	454	30	55.6	617	55.6	29																																																							
<b>PESO TOTALE: 12871.25</b>																																																																																																	

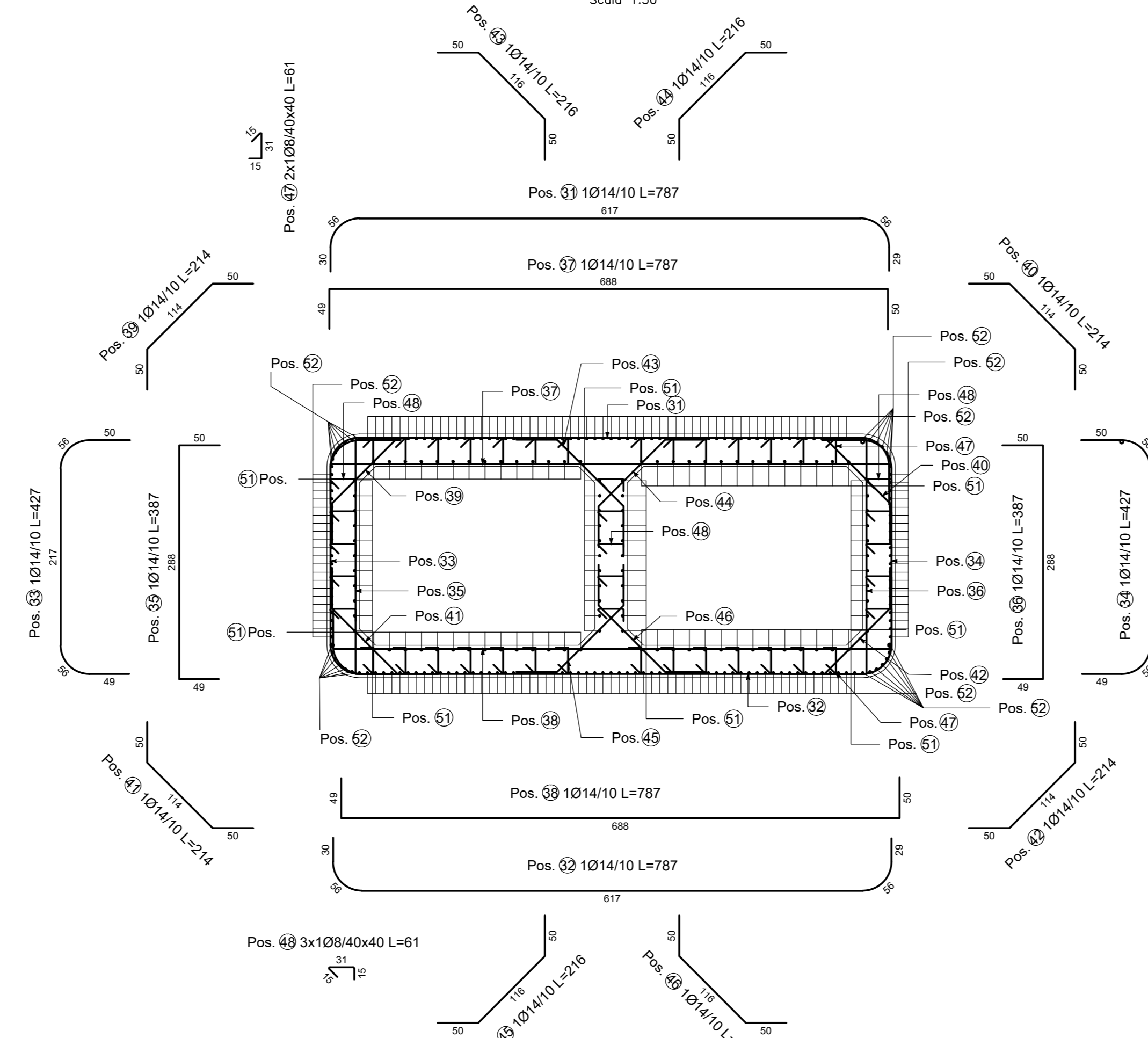
ARMATURA FUSTO P2

Scala 1:50



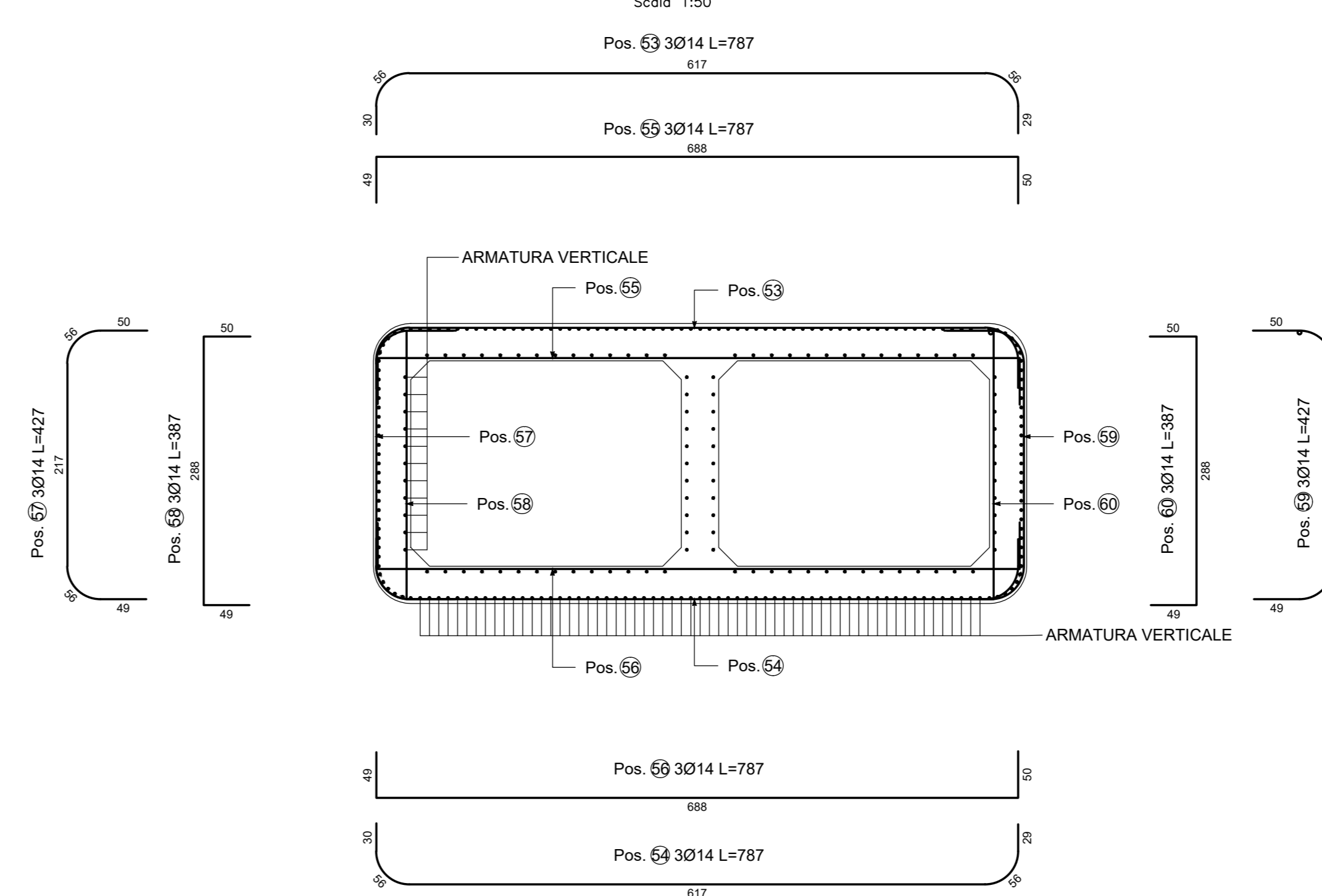
SEZIONE ORIZZONTALE

Scala 1:50



SEZIONE X-X

Scala 1:50



POS. CODICE	BAR DIR.	N.	Ø [mm]	L [cm]	L TOT [m]	PESO [kg]	CODICE	A B C D E/R					SCHEMA PIEGATURA (misure al filo esterno)	POS. CODICE	BAR DIR.	N.	Ø [mm]	L [cm]	L TOT [m]	PESO [kg]	CODICE	A B C D E/R					SCHEMA PIEGATURA (misure al filo esterno)	POS. CODICE	BAR DIR.	N.	Ø [mm]	L [cm]	L TOT [m]	PESO [kg]	CODICE	A B C D E/R					SCHEMA PIEGATURA (misure al filo esterno)				
								F	G	H	I	J										F	G	H	I	J										F	G	H	I	J					
Pos. 31	81	14	787.2	637.64	770.27	454	30	55.6	617	55.6	29	Pos. 42	81	14	214.0	117.34	209.39	252	50	114	50	Pos. 53	3	14	787.2	23.62	28.53	454	30	55.6	617	55.6	29	Pos. 54	3	14	787.2	23.62	28.53	454	30	55.6	617	55.6	29
Pos. 32	81	14	787.2	637.64	770.27	454	30	55.6	617	55.6	29	Pos. 43</																																	