




ASSE VIARIO MARCHE-UMBRIA E QUADRILATERO DI PENETRAZIONE INTERNA MAXI LOTTO 2

LAVORI DI COMPLETAMENTO DELLA DIRETTRICE PERUGIA ANCONA:
SS. 318 DI "VALFABBRICA", TRATTO PIANELLO -VALFABBRICA
SS. 76 "VAL D'ESINO", TRATTI FOSSATO VICO - CANCELLI E ALBACINA - SERRA SAN QUIRICO
"PEDEMONTANA DELLE MARCHE", TRATTO FABRIANO-MUCCIA-SFERCIA.

PROGETTO ESECUTIVO




CONTRAENTE GENERALE: 	Il responsabile del Contraente Generale: Ing. Federico Montanari	Il responsabile Integrazioni delle Prestazioni Specialistiche: Ing. Salvatore Lieto
--	--	---

PROGETTAZIONE: Associazione Temporanea di Imprese

Mandatara:  Mandanti:

		
---	---	---

Via Marconi, 20 - 47833 Montecano di Romagna (RN) - ITALY
P. IVA 01184420433 - tel/fax +39 0541980277 - e-mail: sgai@sgai.com
www.sgai.com

RESPONSABILE DELLA PROGETTAZIONE PER L'A.T.I. Prof. Ing. Antonio Grimaldi GEOLOGO Dott. Geol. Fabrizio Pontoni COORDINATORE DELLA SICUREZZA IN FASE DI PROGETTAZIONE Ing. Michele Curiale	  	
IL RESPONSABILE DEL PROCEDIMENTO Ing. Iginio Farotti		

2.1.3 - PEDEMONTANA DELLE MARCHE 3° stralcio funzionale: Castelraimondo nord - Castelraimondo sud 4° stralcio funzionale: Castelraimondo sud - innesto S.S.77 a Muccia CANTIERI E PISTE DI ACCESSO, CAVE E DISCARICHE <i>Schede Monografiche delle cave e discariche selezionate</i>	SCALA: varie DATA: Marzo 2020
--	--

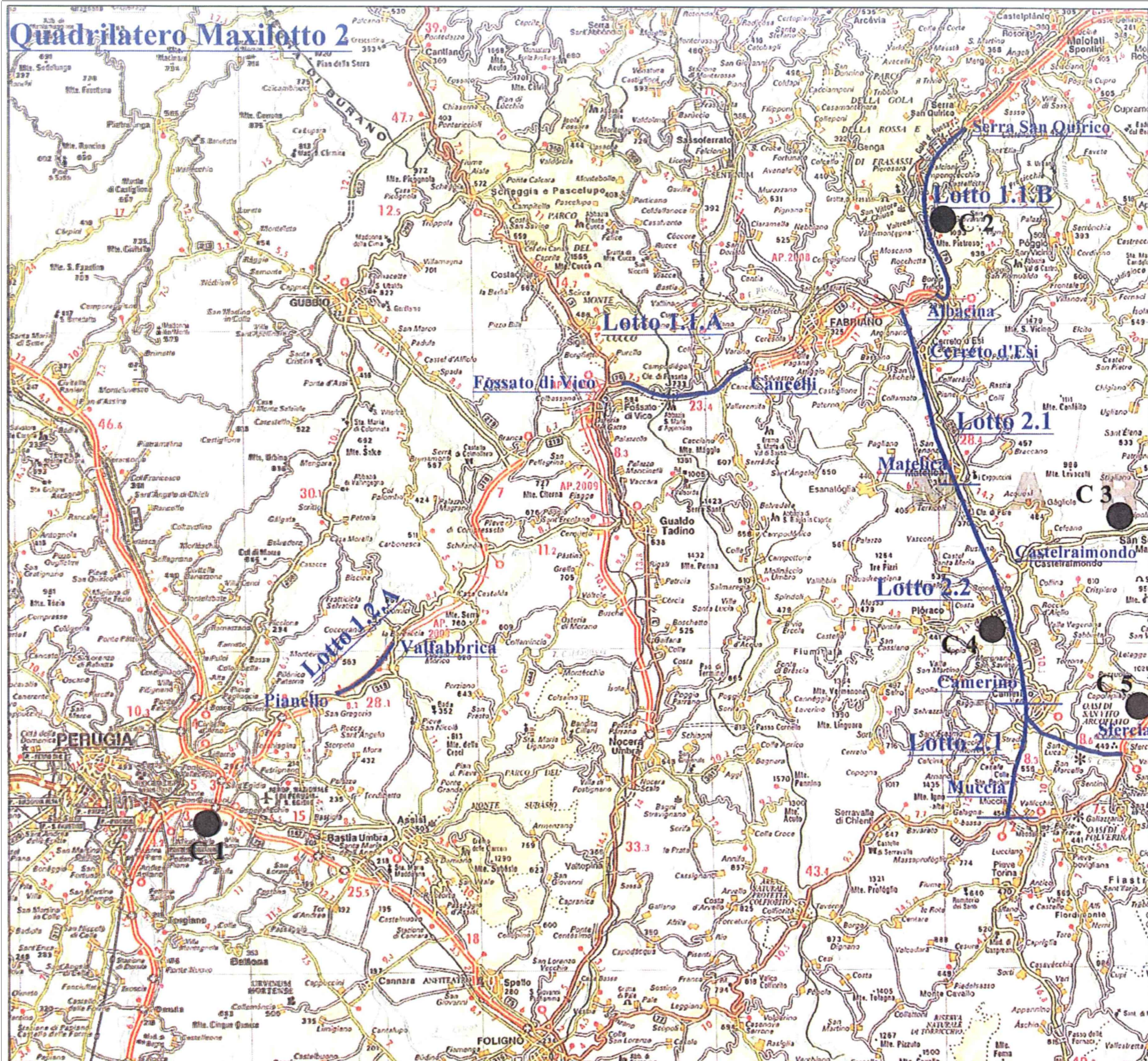
Codice Unico di Progetto (CUP) **F12C03000050021**

Codice elaborato:

L	0	7	0	3	2	1	3	E	2	0	C	A	0	0	0	0	C	O	R	0	4	A
---	---	---	---	---	---	---	---	---	---	---	---	---	---	---	---	---	---	---	---	---	---	---

Nome File: L0703213E20CA0000COR04A

REV.	DATA	DESCRIZIONE	Redatto		Controllato	Approvato
A	03/2020	Emissione per progetto esecutivo	Progin	Diaferia	Scoppetta	Grimaldi



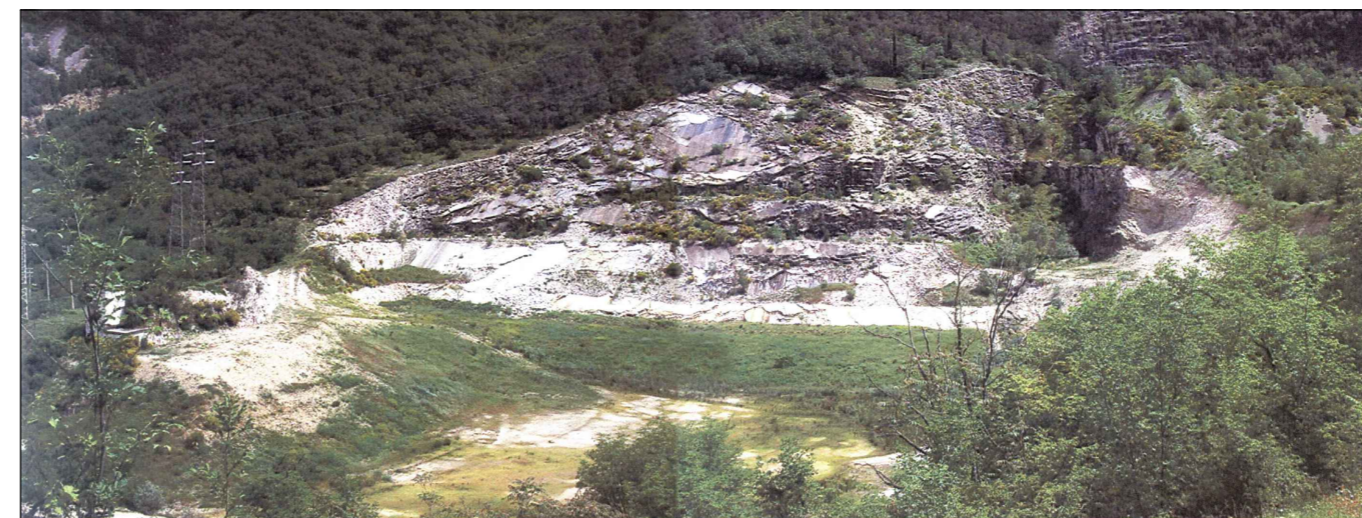
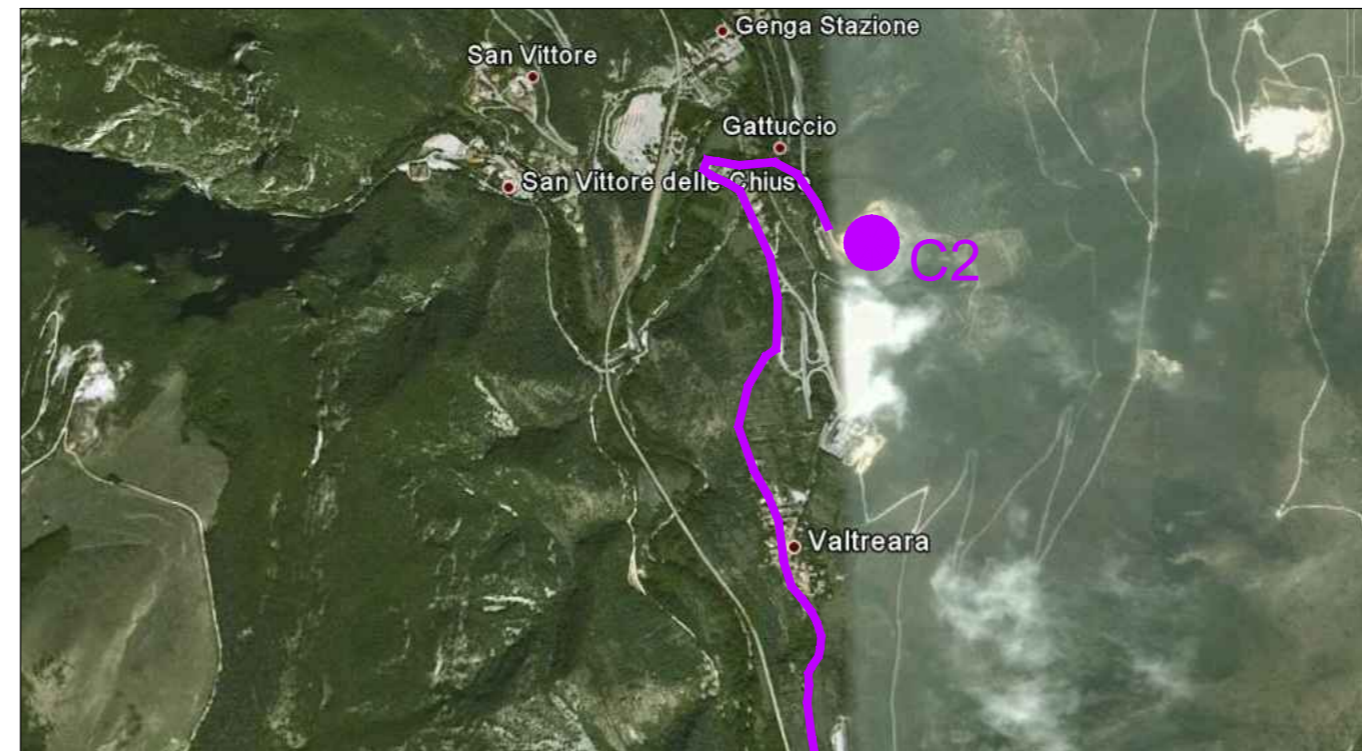
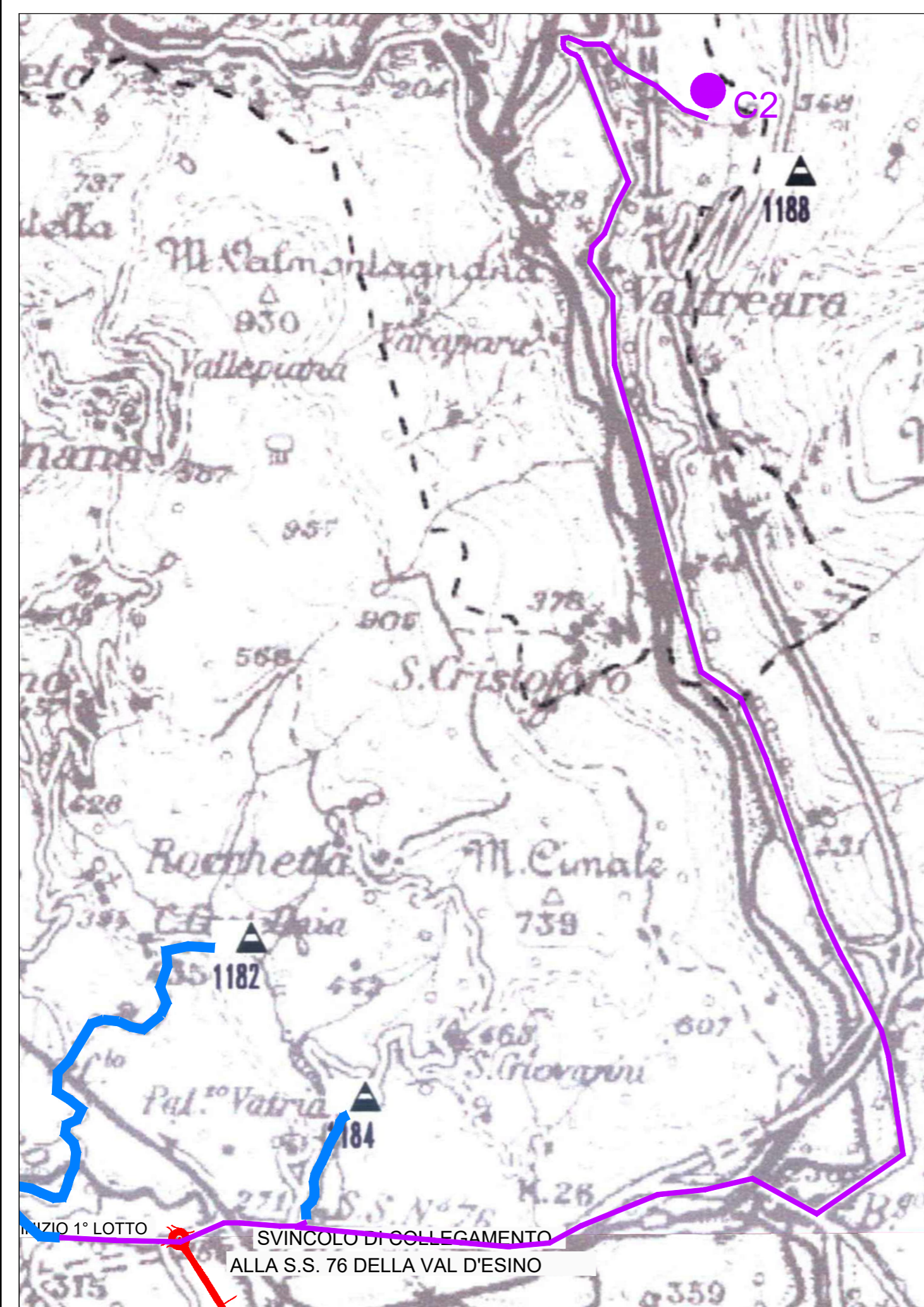
C 1 : Cava MINELLI
Capacità 250.000 Mc

C 2 : Cava MANCINI
Capacità 700.000 Mc

C 3 : Cava MARCHIGIANA
Capacità 200.000 Mc




C 4 : Cava F.I.M.I.C.
Capacità 200.000 Mc

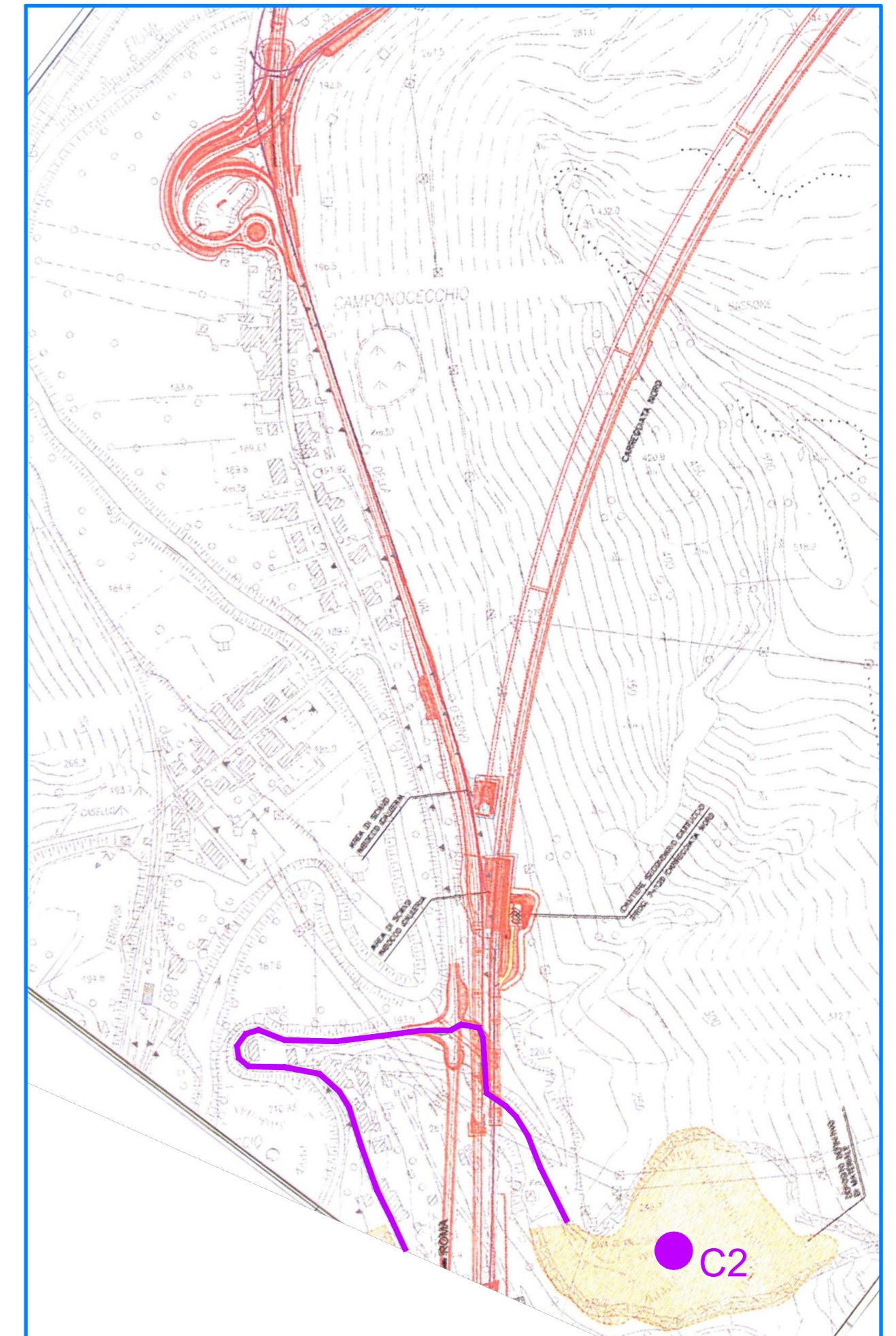
C 5 : Cava E.F.I.
Capacità 200.000 Mc

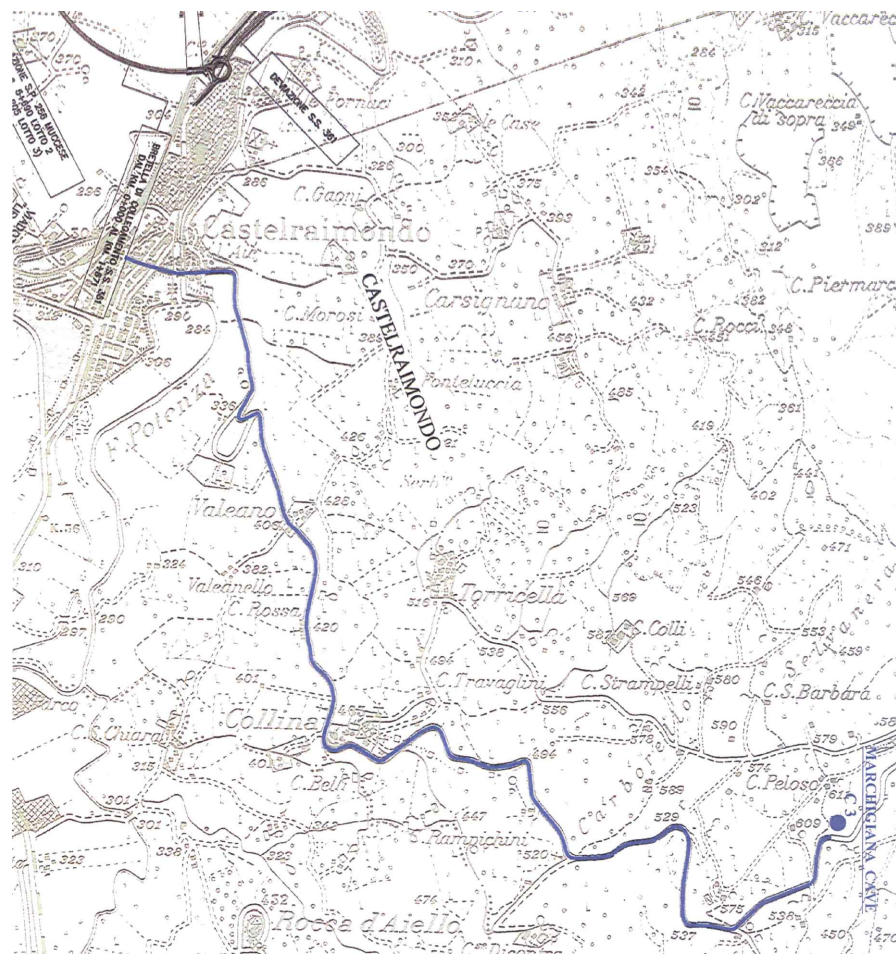
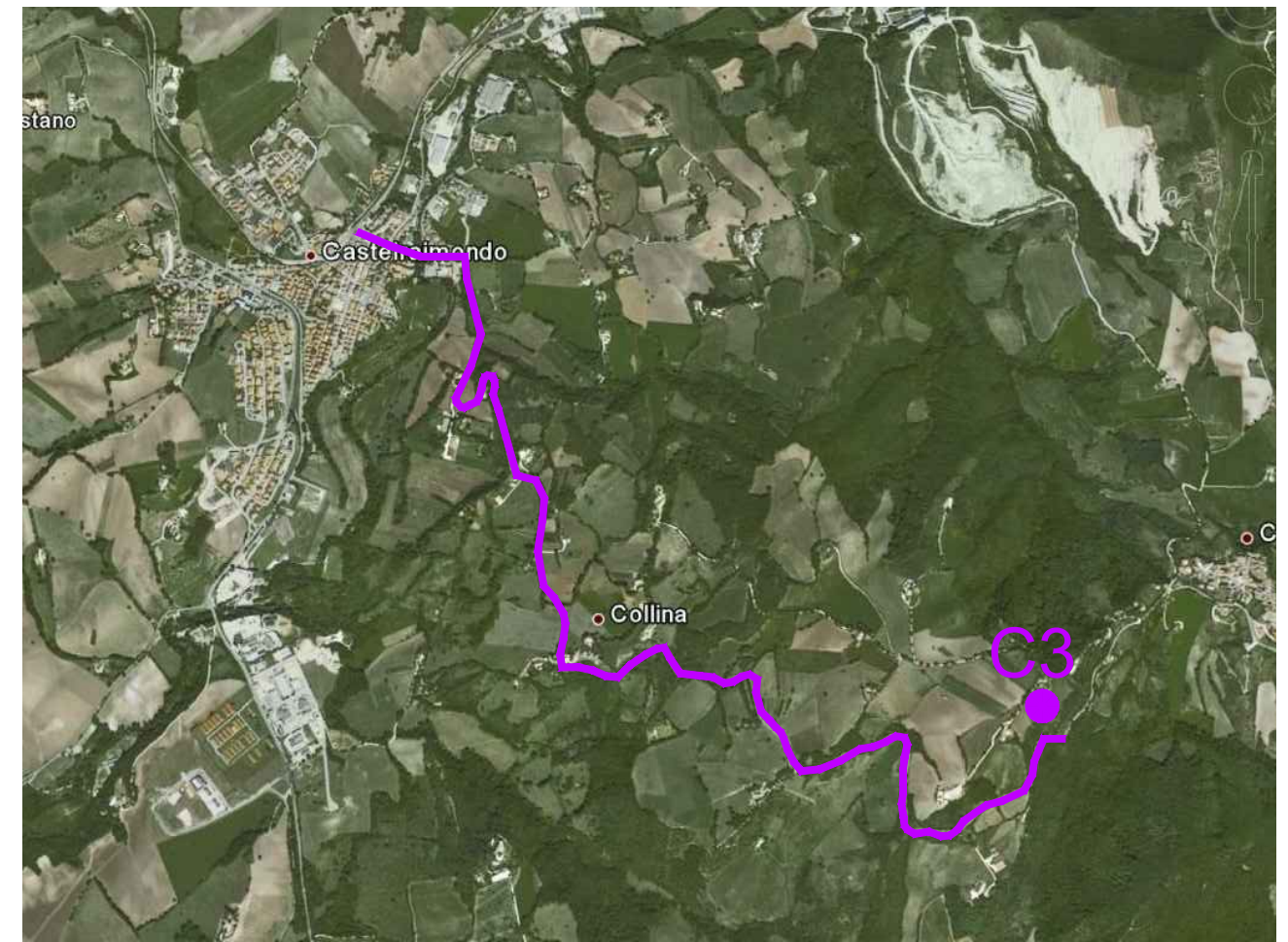
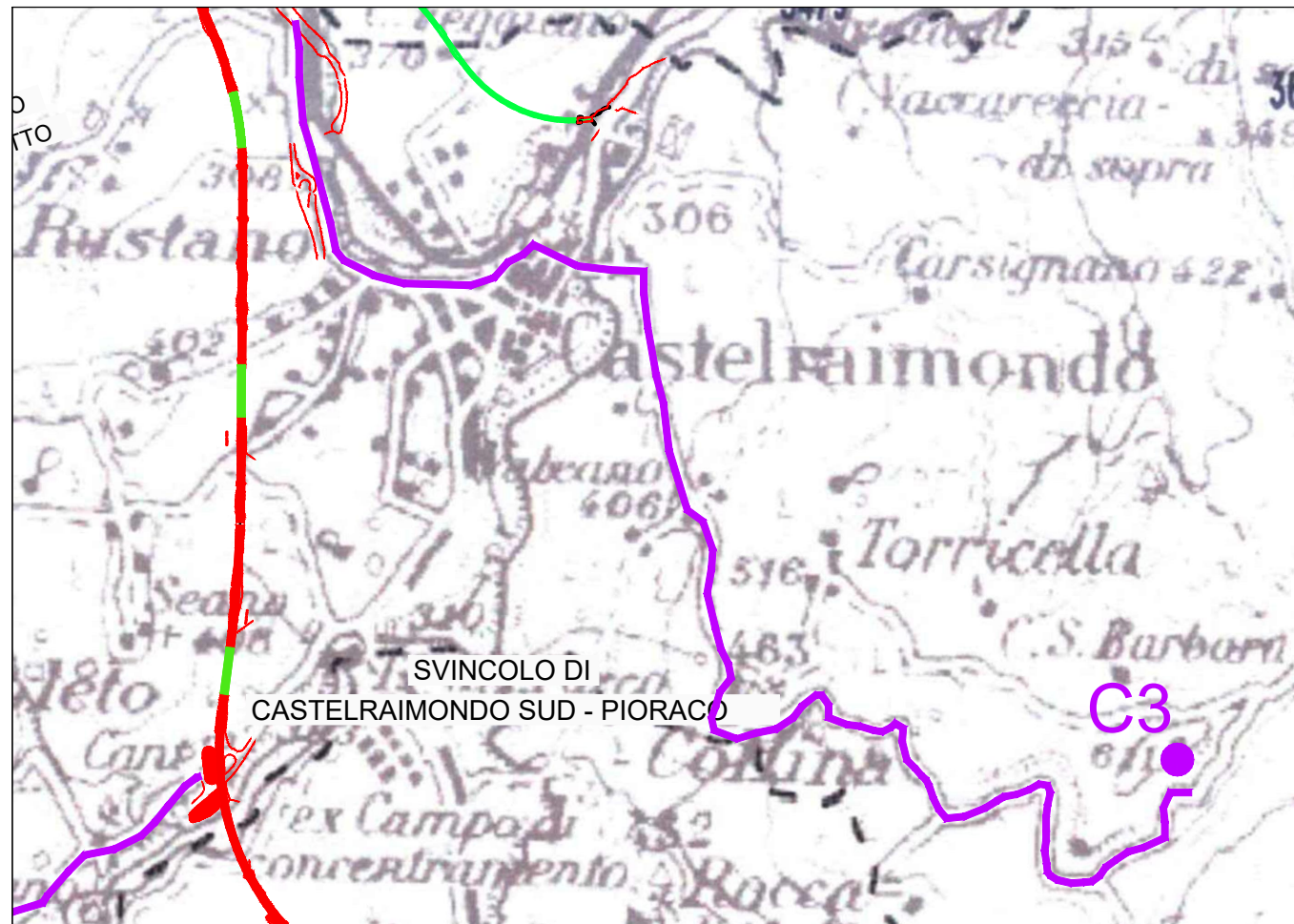


DISPONIBILITA' CAVE DI DEPOSITO
 C2 : Cava Mancinii Capacità 700.000 Mc

LEGENDA INFRASTRUTTURA

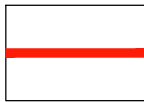


-  SEDE NATURALE / VIADOTTO
-  TRACCIATO IN GALLERIA
-  VIABILITA' CAVE-DISCARICHE/CANTIERI

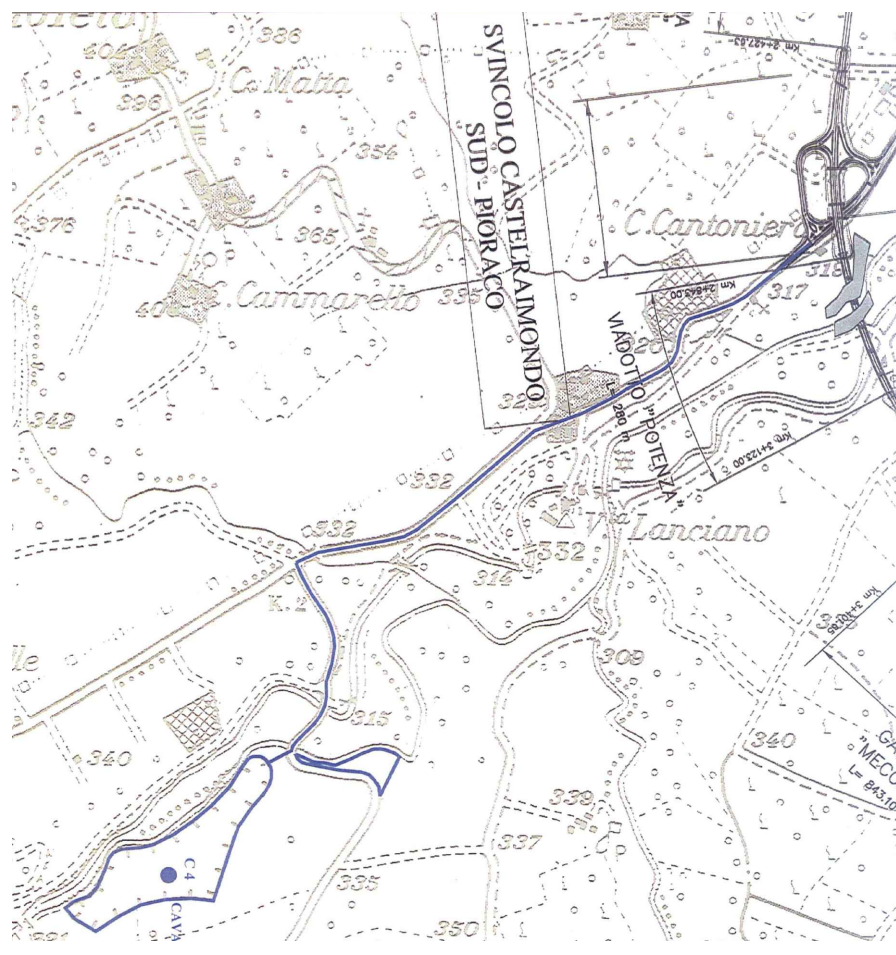
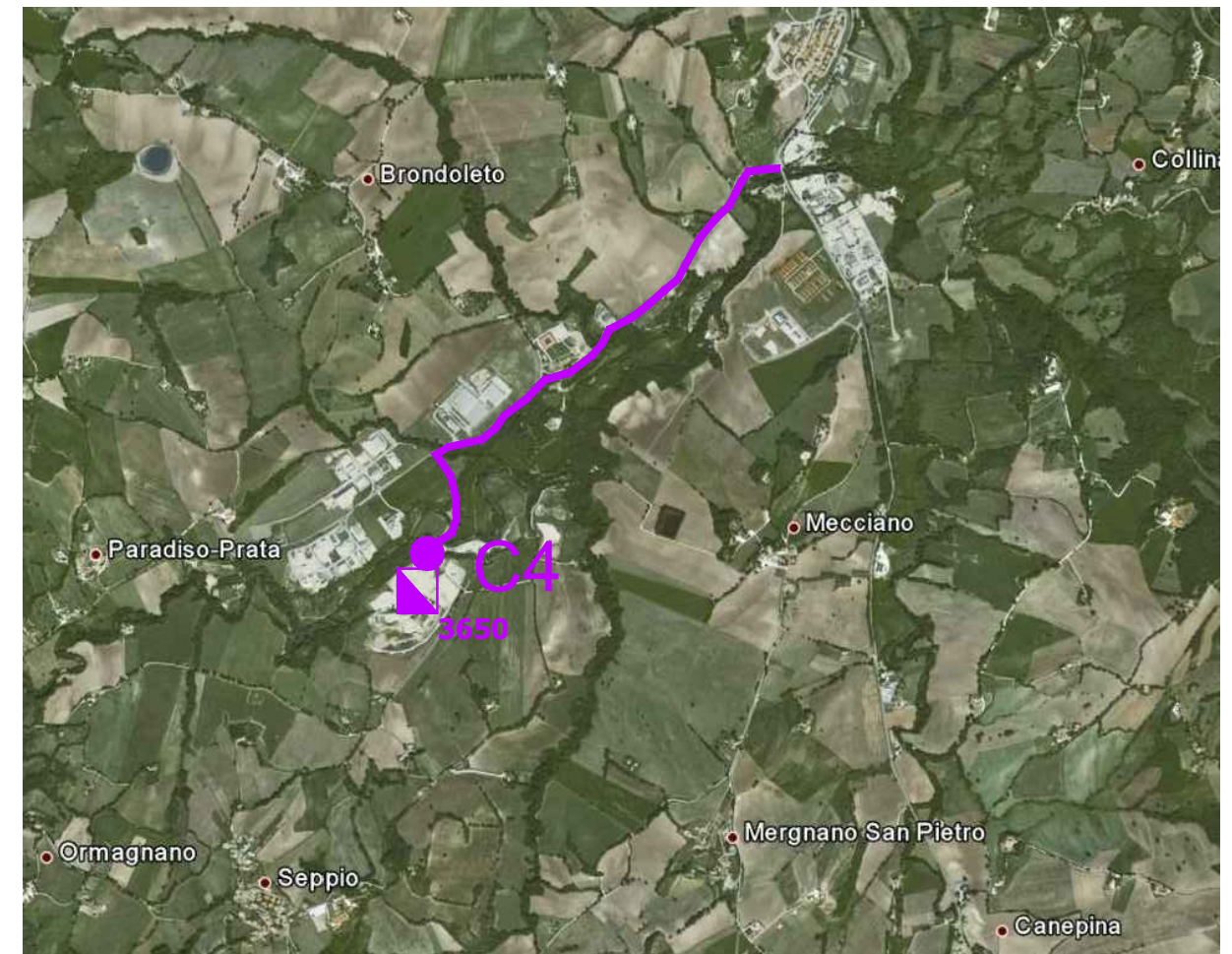




DISPONIBILITA' CAVE DI DEPOSITO
 C3 : Cava Marchigiana Capacità 200.000 Mc



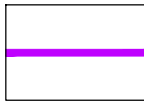
LEGENDA INFRASTRUTTURA

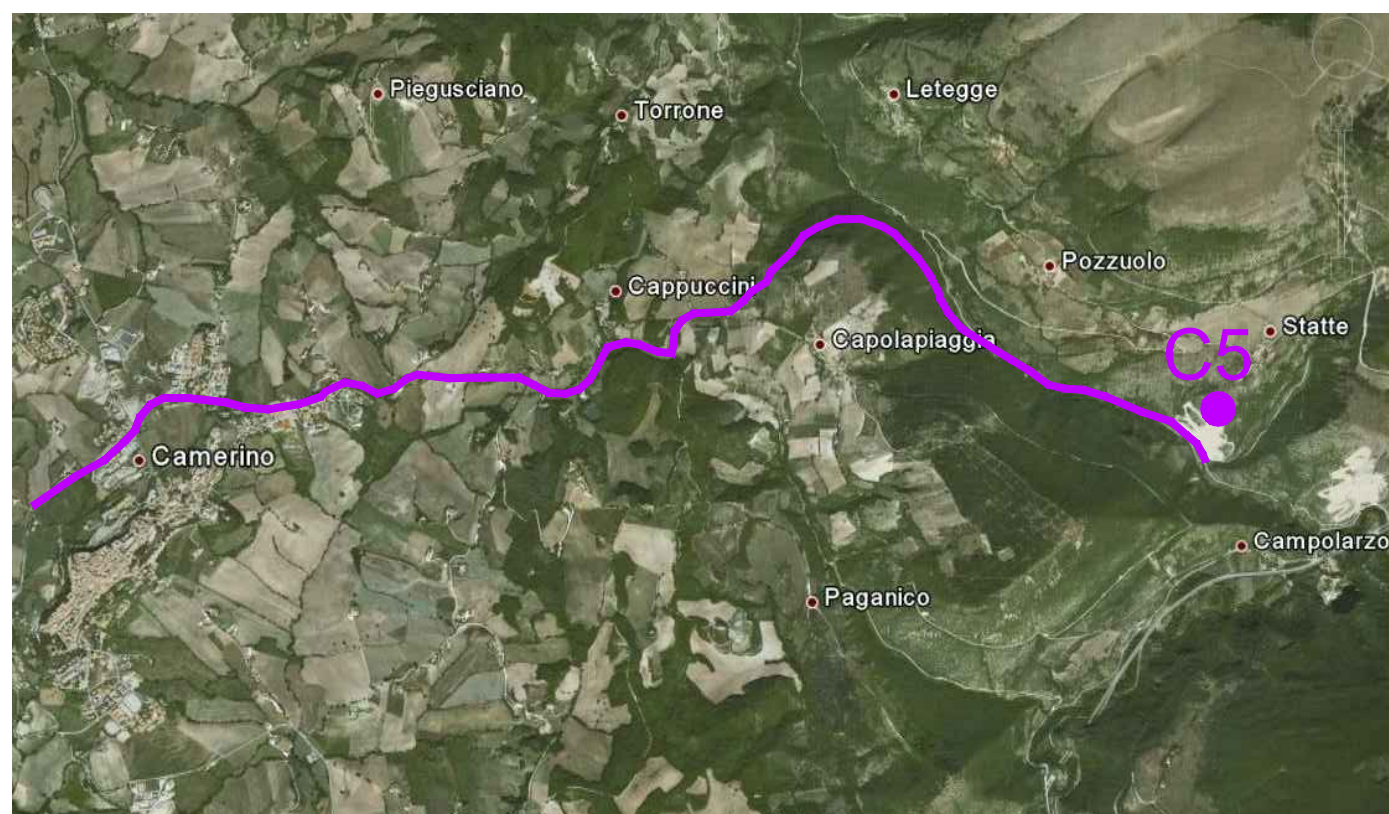
-  SEDE NATURALE / VIADOTTO
-  TRACCIATO IN GALLERIA
-  VIABILITA' CAVE-DISCARICHE/CANTIERI



DISPONIBILITA' CAVE DI PRESTITO
 C4 : Cava F.I.M.C. Capacità 200.000 Mc




LEGENDA INFRASTRUTTURA

-  SEDE NATURALE / VIADOTTO
-  TRACCIATO IN GALLERIA
-  VIABILITA' CAVE-DISCARICHE/CANTIERI



DISPONIBILITA' CAVE DI PRESTITO
C5 : Cava E.F.I. Capacità 200.000 Mc

LEGENDA INFRASTRUTTURA

-  SEDE NATURALE / VIADOTTO
-  TRACCIATO IN GALLERIA
-  VIABILITA' CAVE-DISCARICHE/CANTIERI