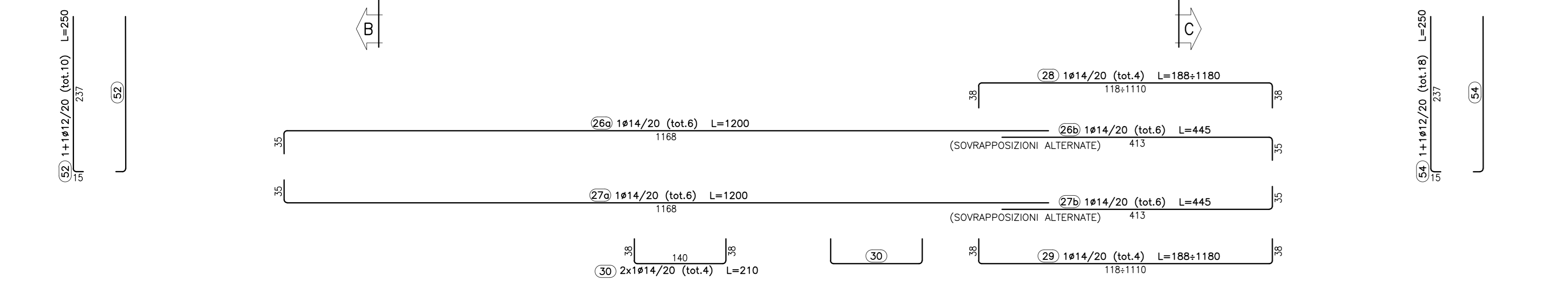
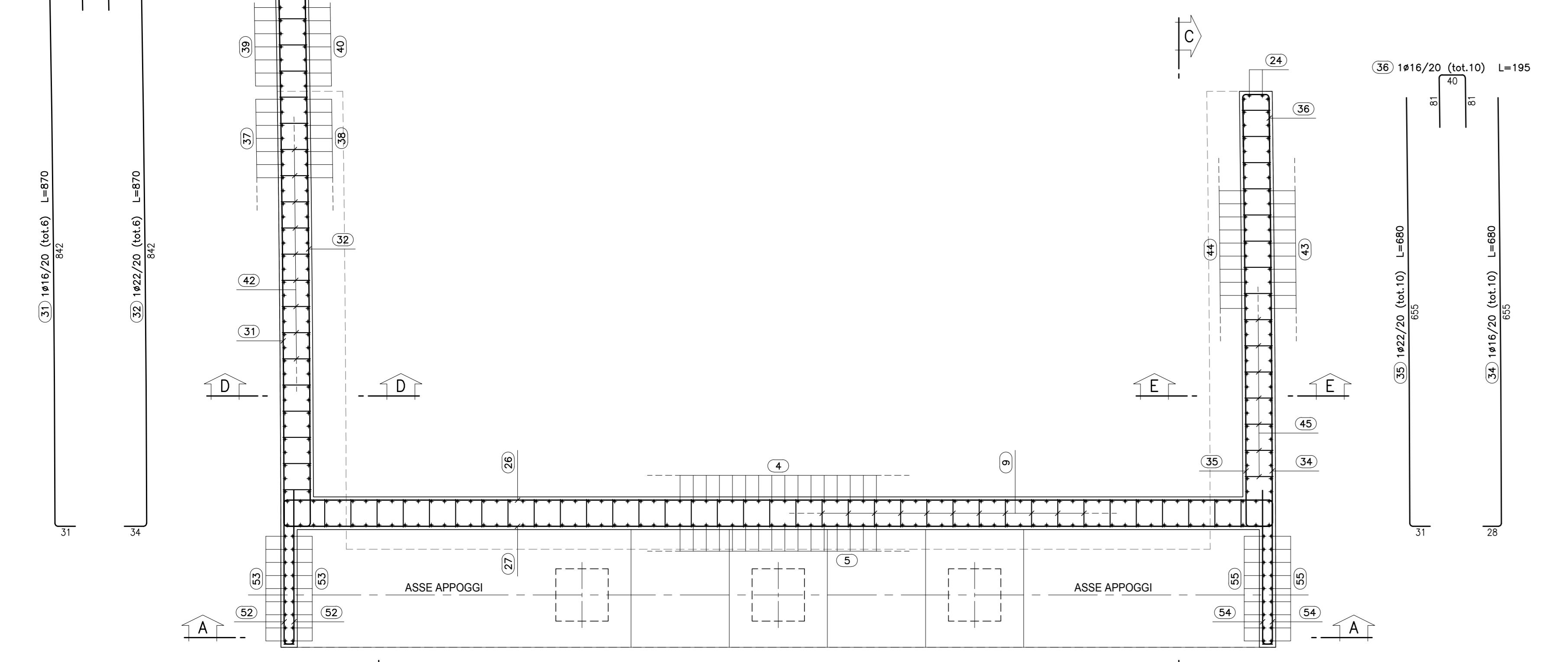


14/16/20 (tot.6) L=435

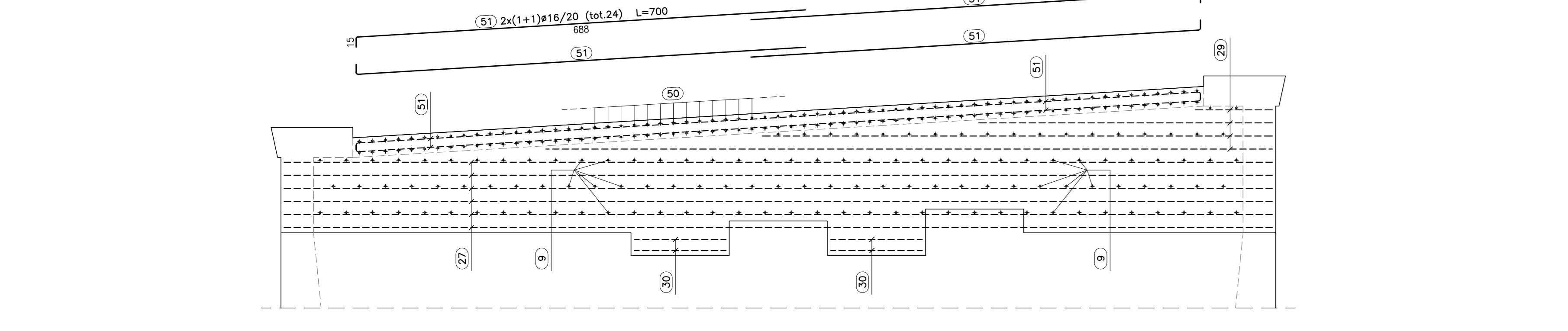
PIANTA A QUOTA APPOGGI (SEZIONE Y-Y)

Scala 1/50



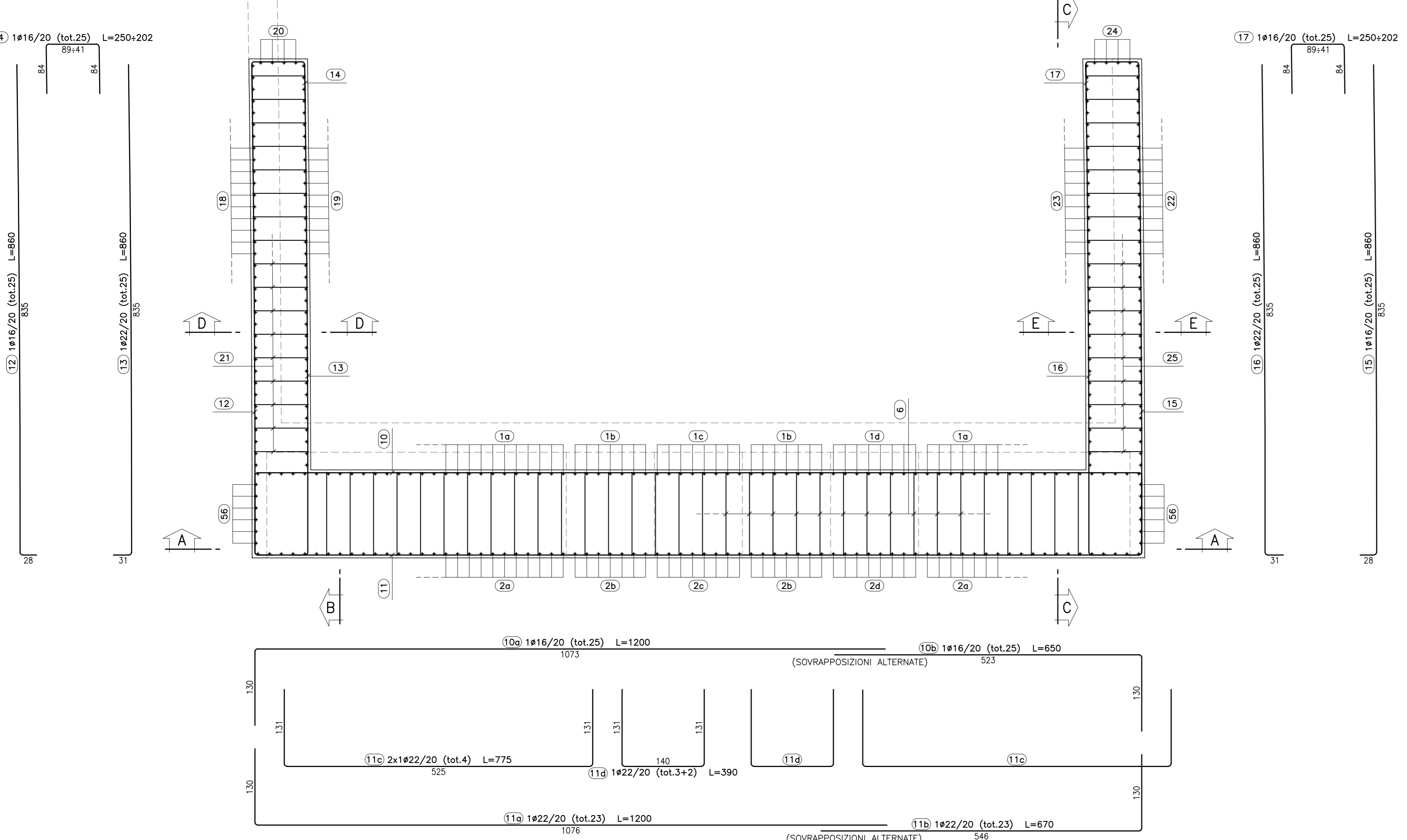
SCHEMA FERRI PARAGHIA

Scala 1/50



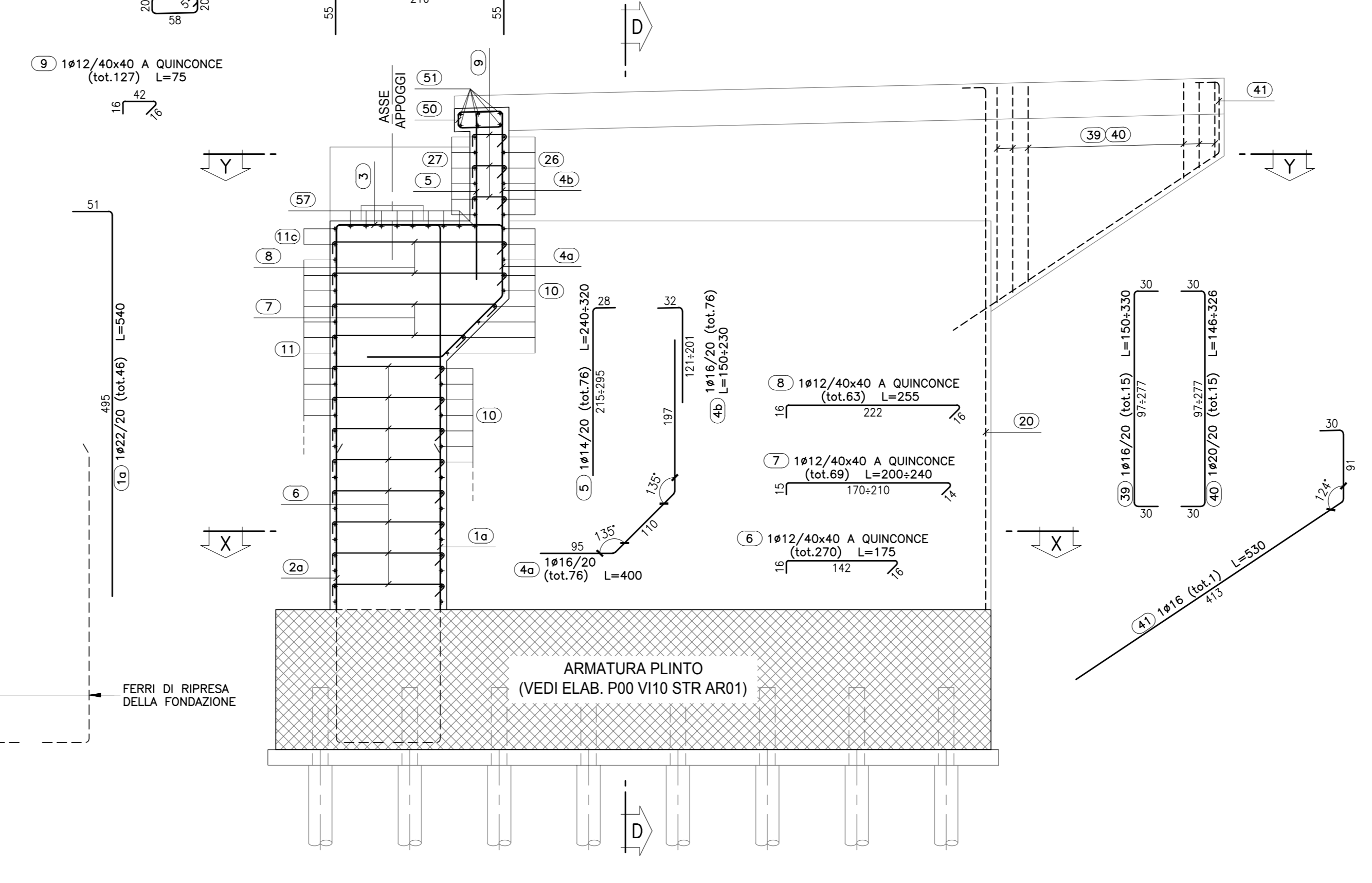
PIANTA ALLO SPICCATO (SEZIONE X-X)

Scala 1/50



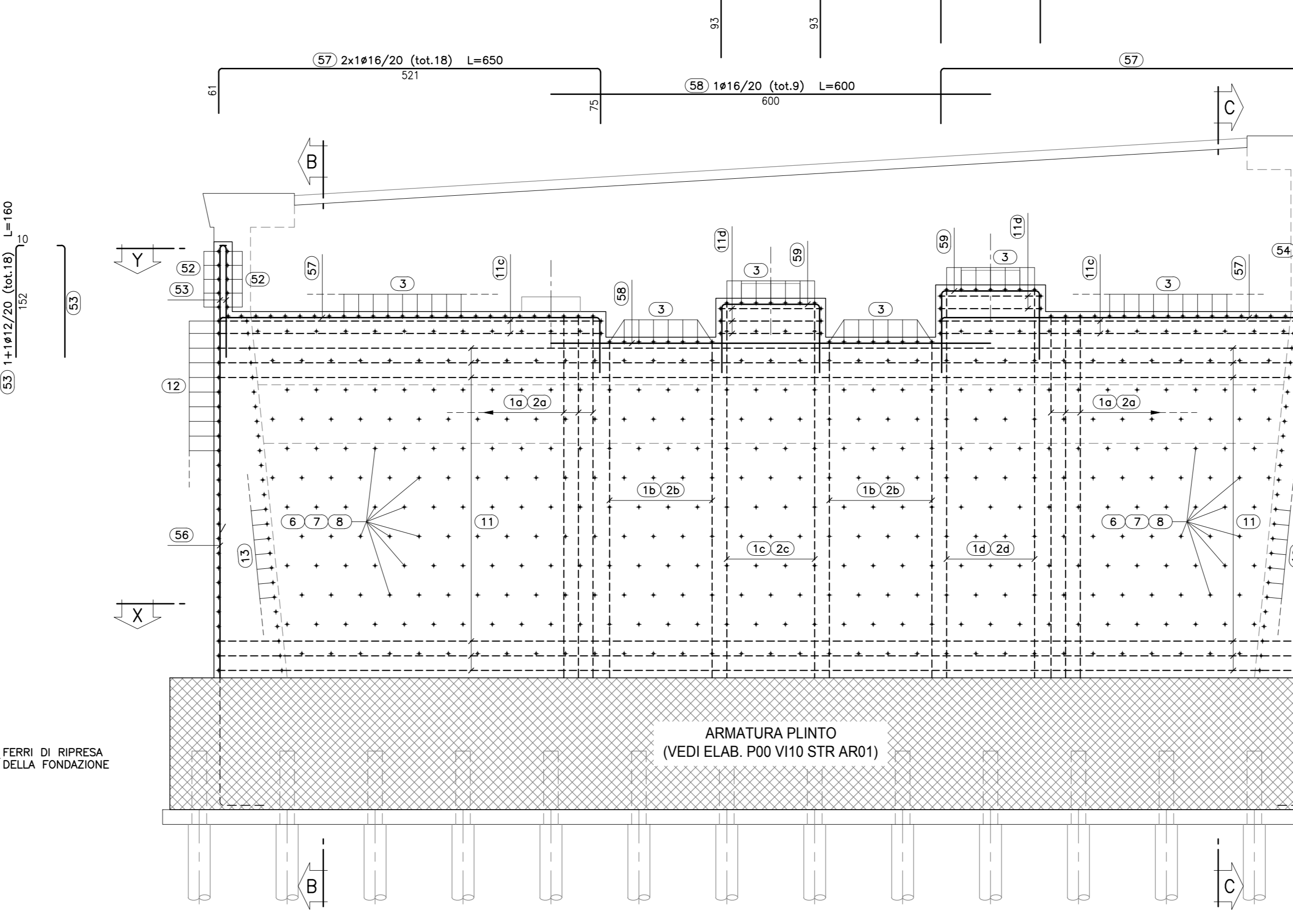
SEZIONE B-B

Scala 1/50



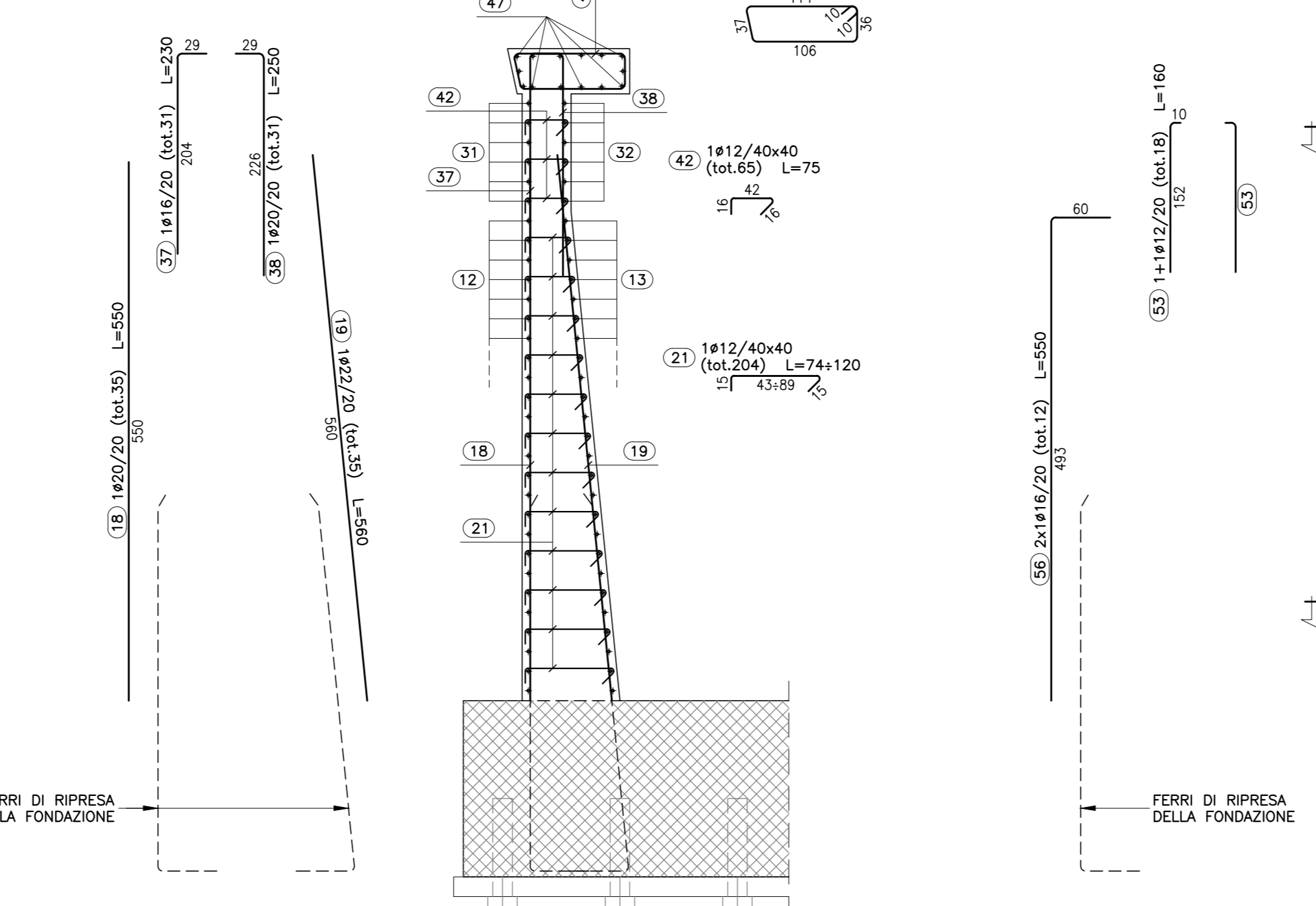
SEZIONE A-A

Scala 1/50



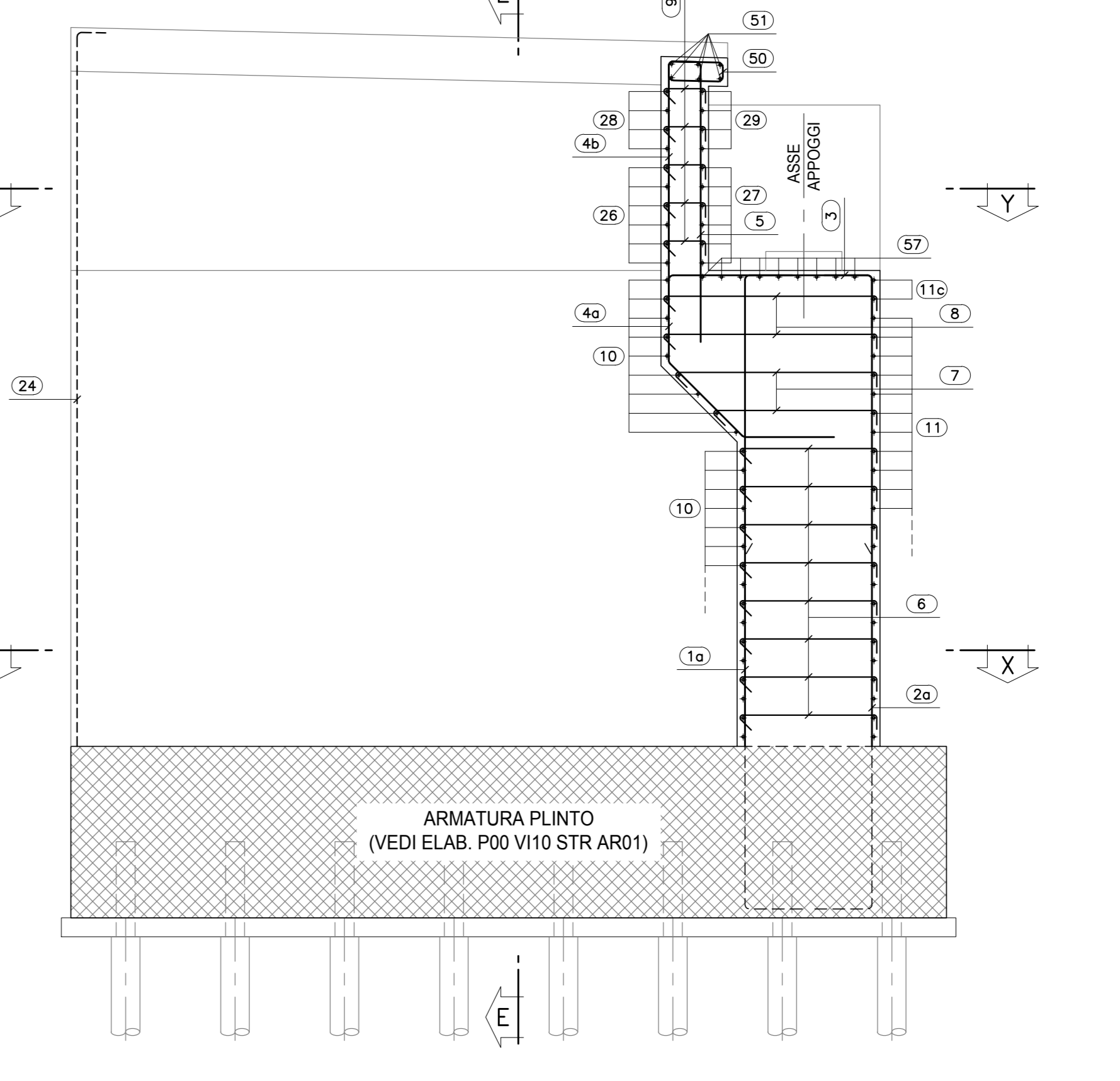
SEZIONE D-D

Scala 1/50



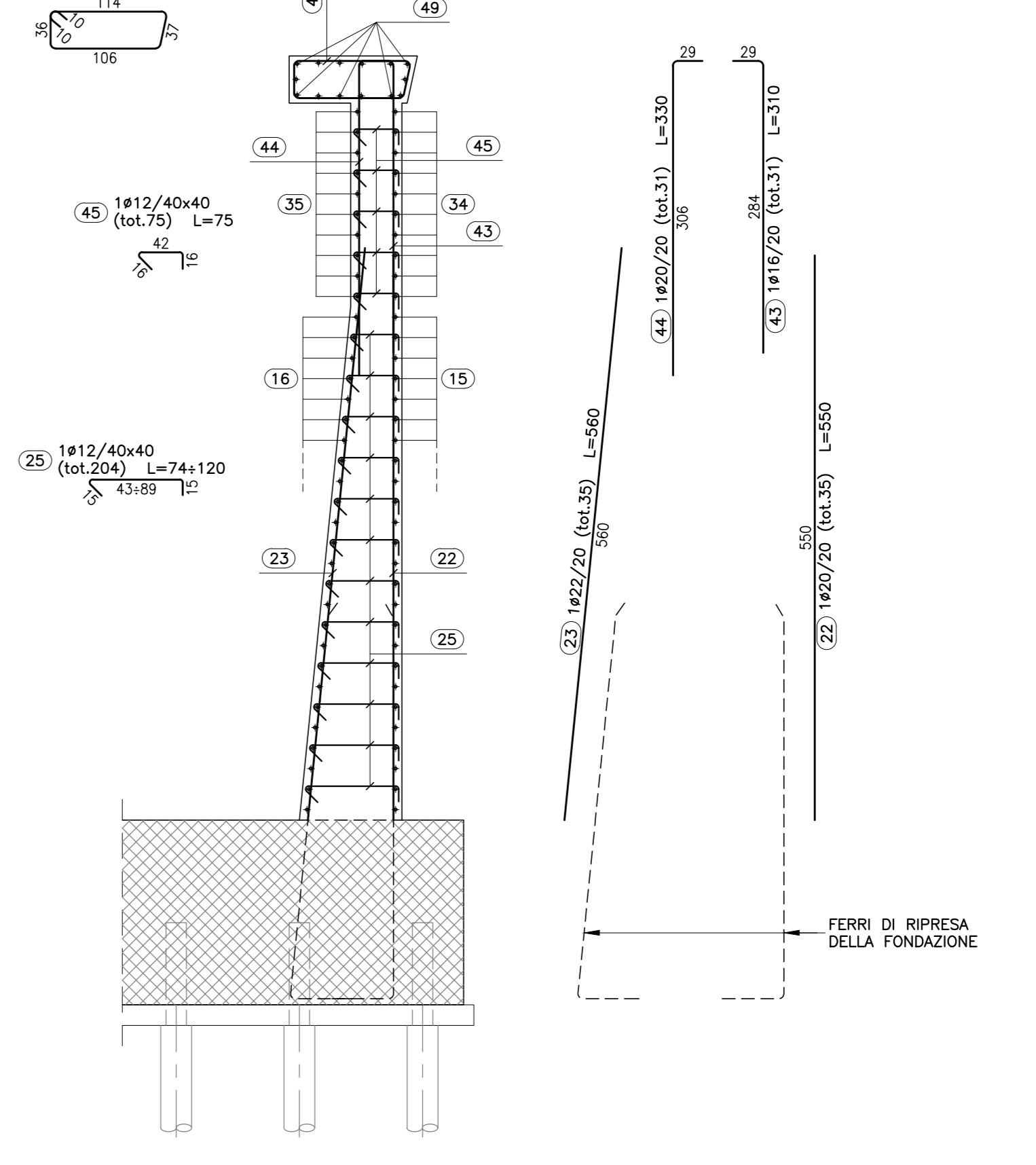
SEZIONE C-C

Scala 1/50



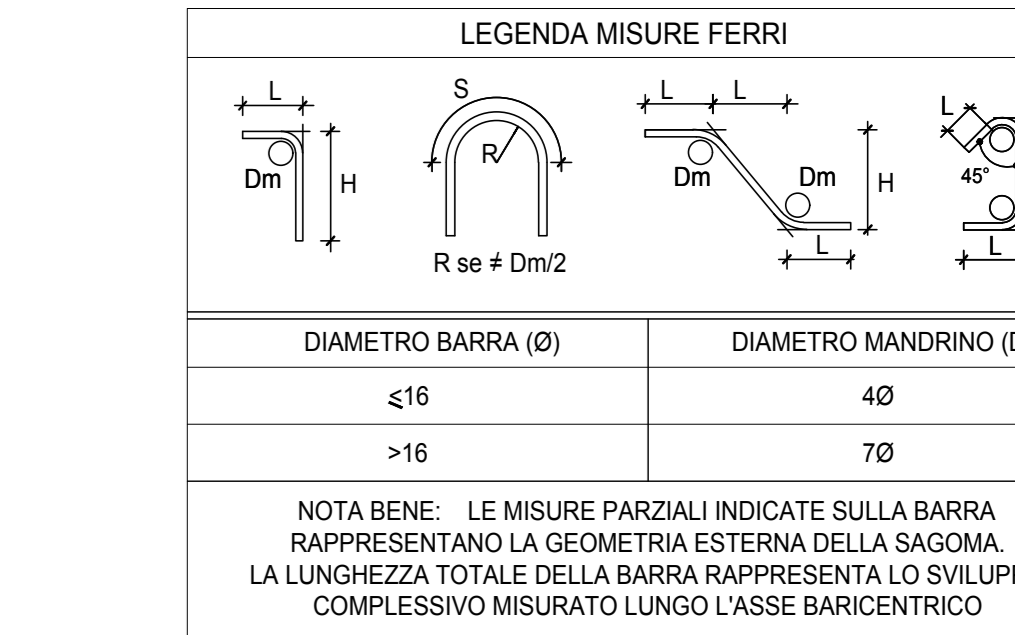
SEZIONE E-E

Scala 1/50



CARATTERISTICHE DEI MATERIALI

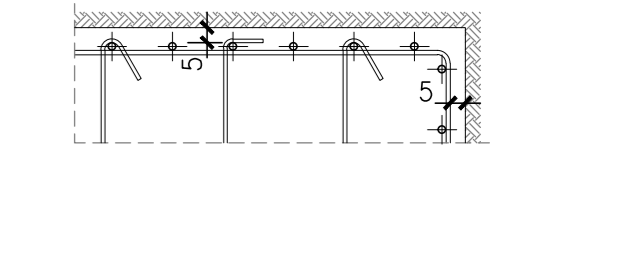
Technical specifications for materials including concrete (CEMENTO ARMATO, CALCESTRUZZO), steel (ACCIAIO DI ARMATURA, ACCIAIO PER CARPENTERIA), and metalwork (CARPENTERIA METALLICA).



NOTE BENE: PER GEOMETRIA, PREDISPOSIZIONI ED ARMATURA DEI BAGGIOLI VEDERE ELABORATO SPECIFICO

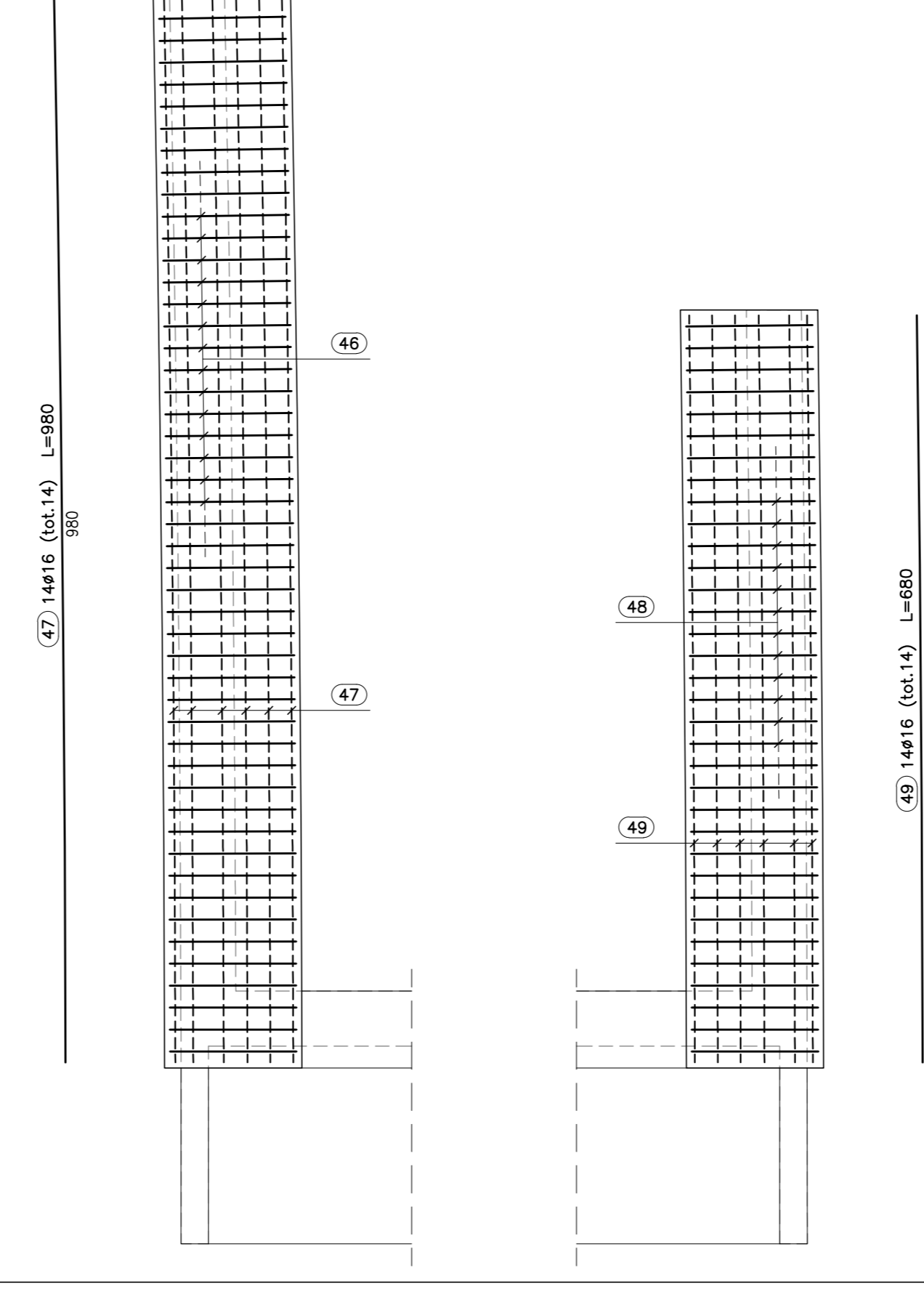
DETTAGLIO COPRIFERRO

Scala 1/25



PIANTA ARMATURE A QUOTA CORDOLI

Scala 1/50



FERRI VERTICALI DI CHIUSURA MURI

Scala 1/50

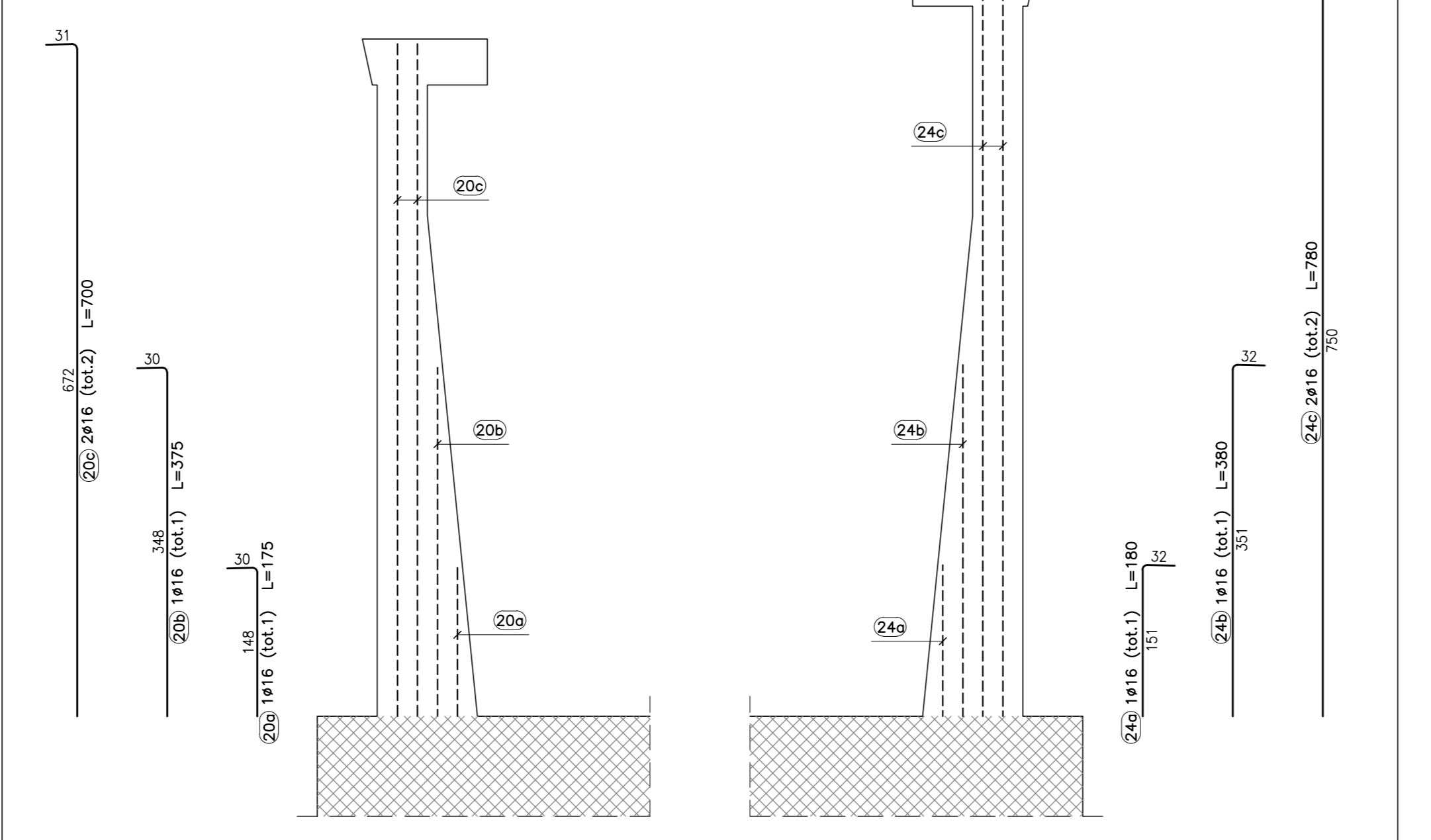


TABELLA TOTALE FERRI

Table with 7 columns: Pos, Ø (mm), L (cm), Q.LB, L.TOT. Ø 12, L.TOT. Ø 14, L.TOT. Ø 16, L.TOT. Ø 20, L.TOT. Ø 22. Lists reinforcement bars and their quantities.

TABELLA TOTALE FERRI

Table with 7 columns: Pos, Ø (mm), L (cm), Q.LB, L.TOT. Ø 12, L.TOT. Ø 14, L.TOT. Ø 16, L.TOT. Ø 20, L.TOT. Ø 22. Lists reinforcement bars and their quantities.

Project information: Direzione Progettazione e Realizzazione Lavori, VARIANTE ALLA S.S. 1 "VIA AURELIA", Lavori di costruzione della variante alla S.S. 1 Via Aurelia - 3° Lotto.

PROGETTO ESECUTIVO

PROGETTAZIONE: ANAS - DIREZIONE PROGETTAZIONE E REALIZZAZIONE LAVORI

OPERE D'ARTE MAGGIORI - VIADOTTI

ASSE PRINCIPALE - VIADOTTO SAN VENERIO I, ARMATURA SPALLA SA

Project metadata table with columns: CODICE PROGETTO, NOME FILE, REVISIONE, SCALA, and a grid for revision details.