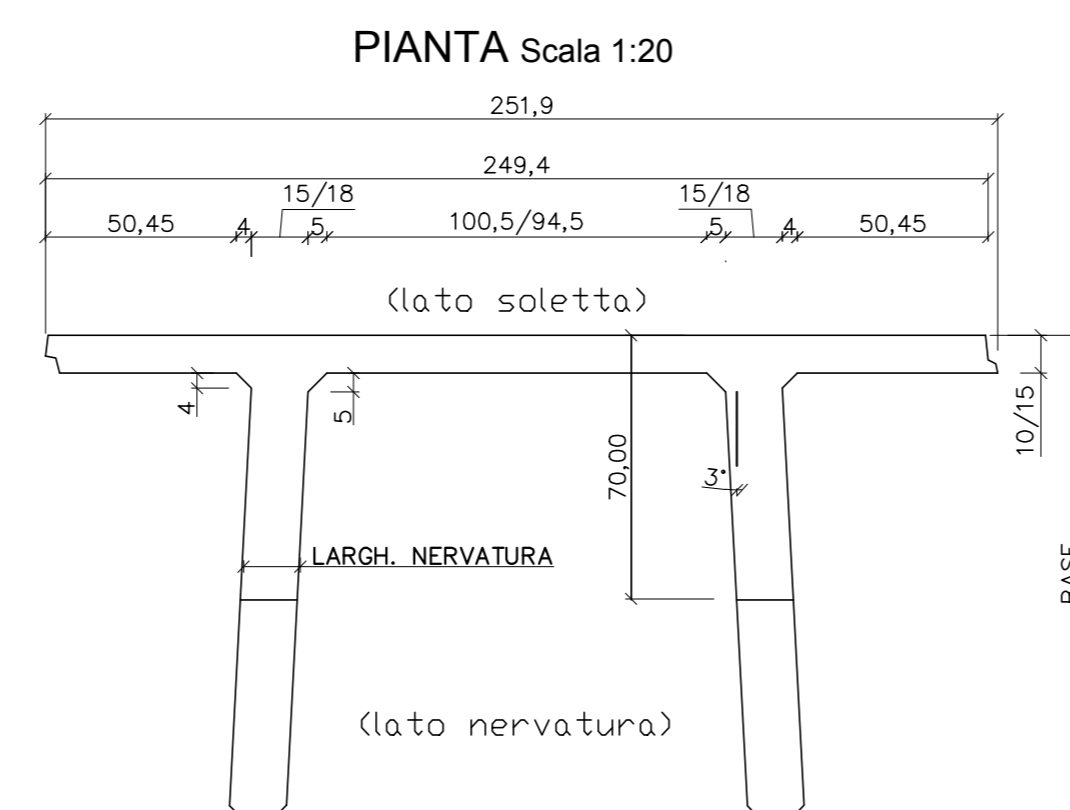
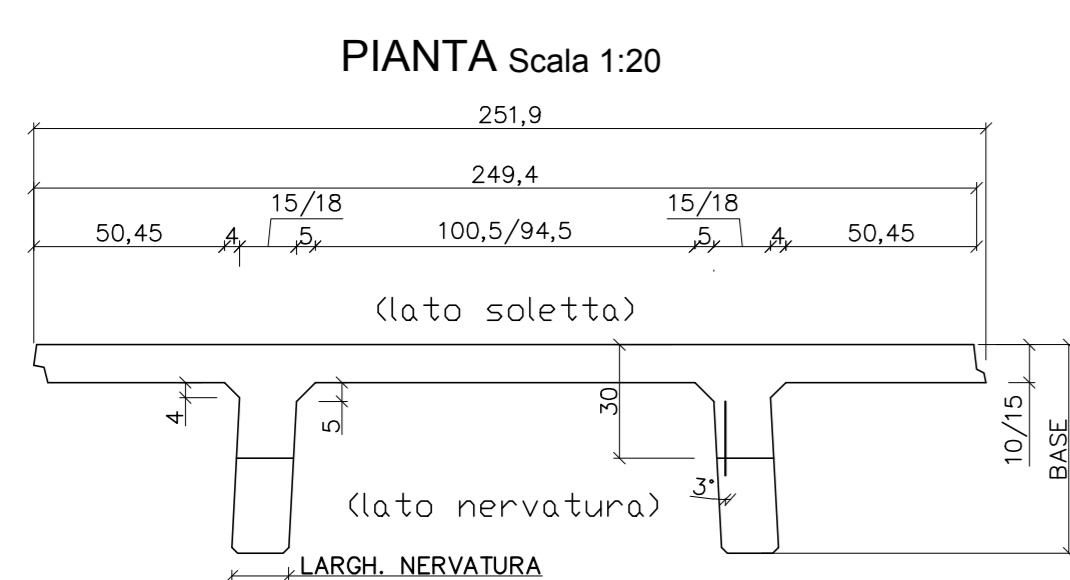
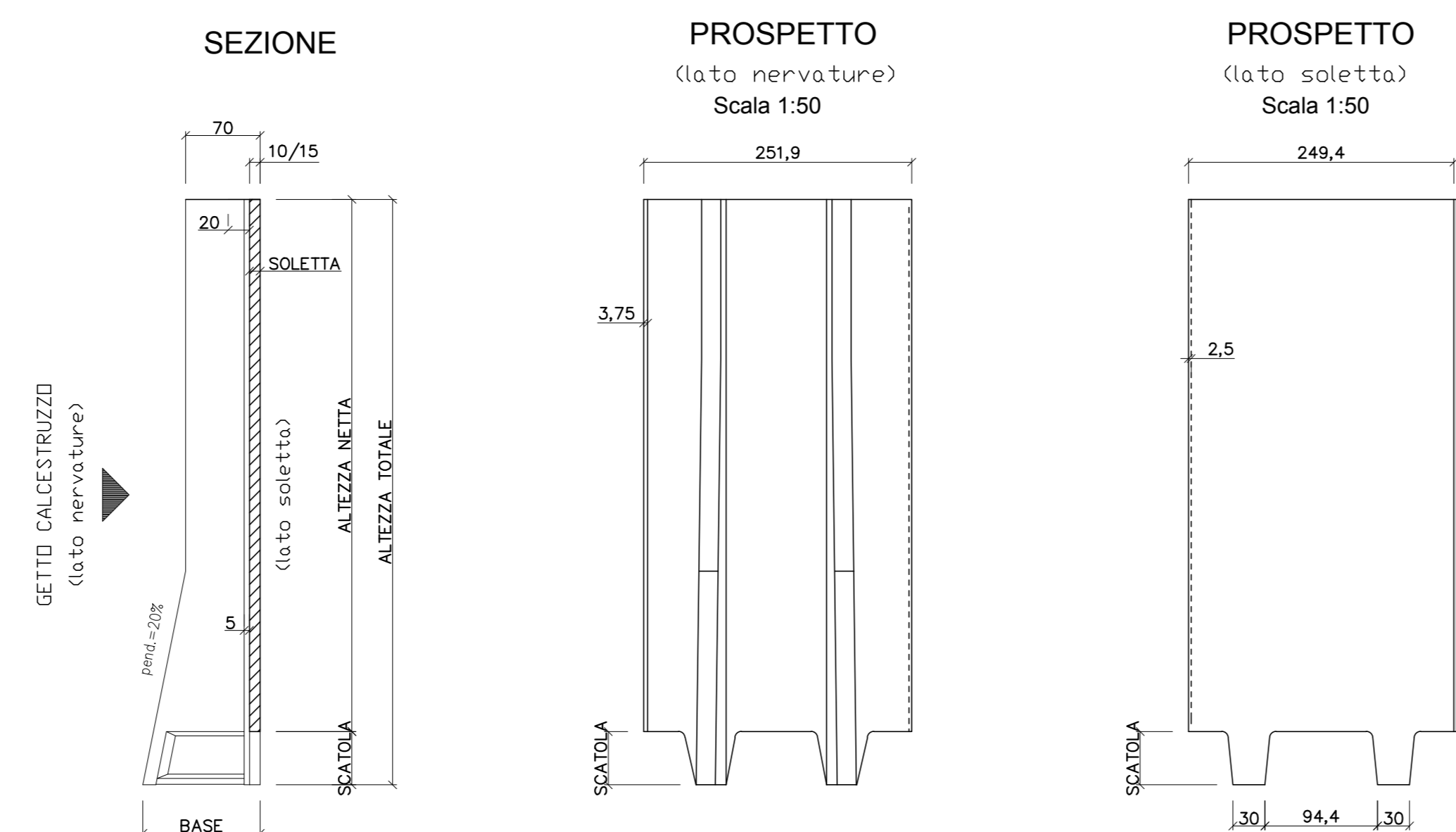
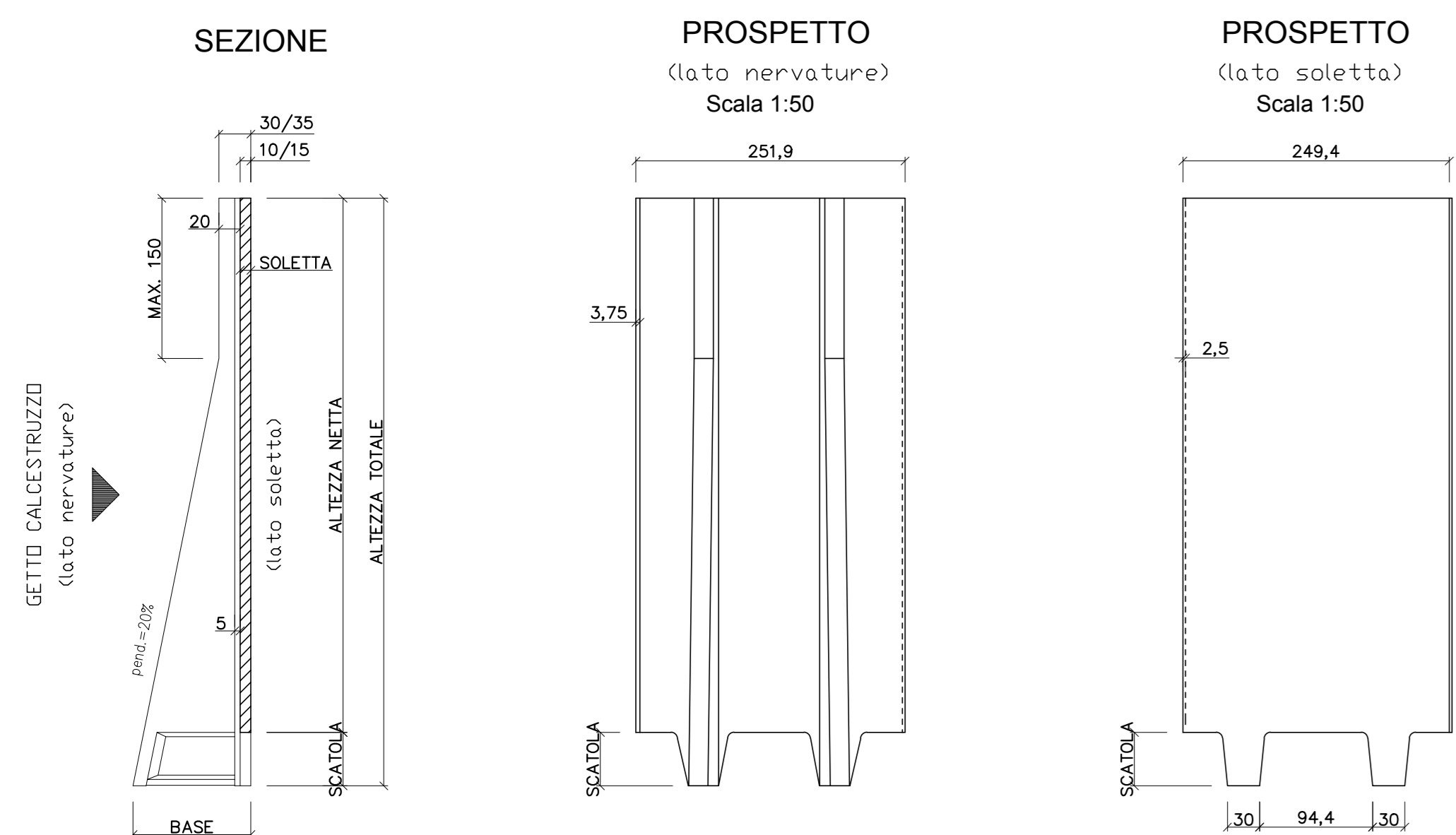


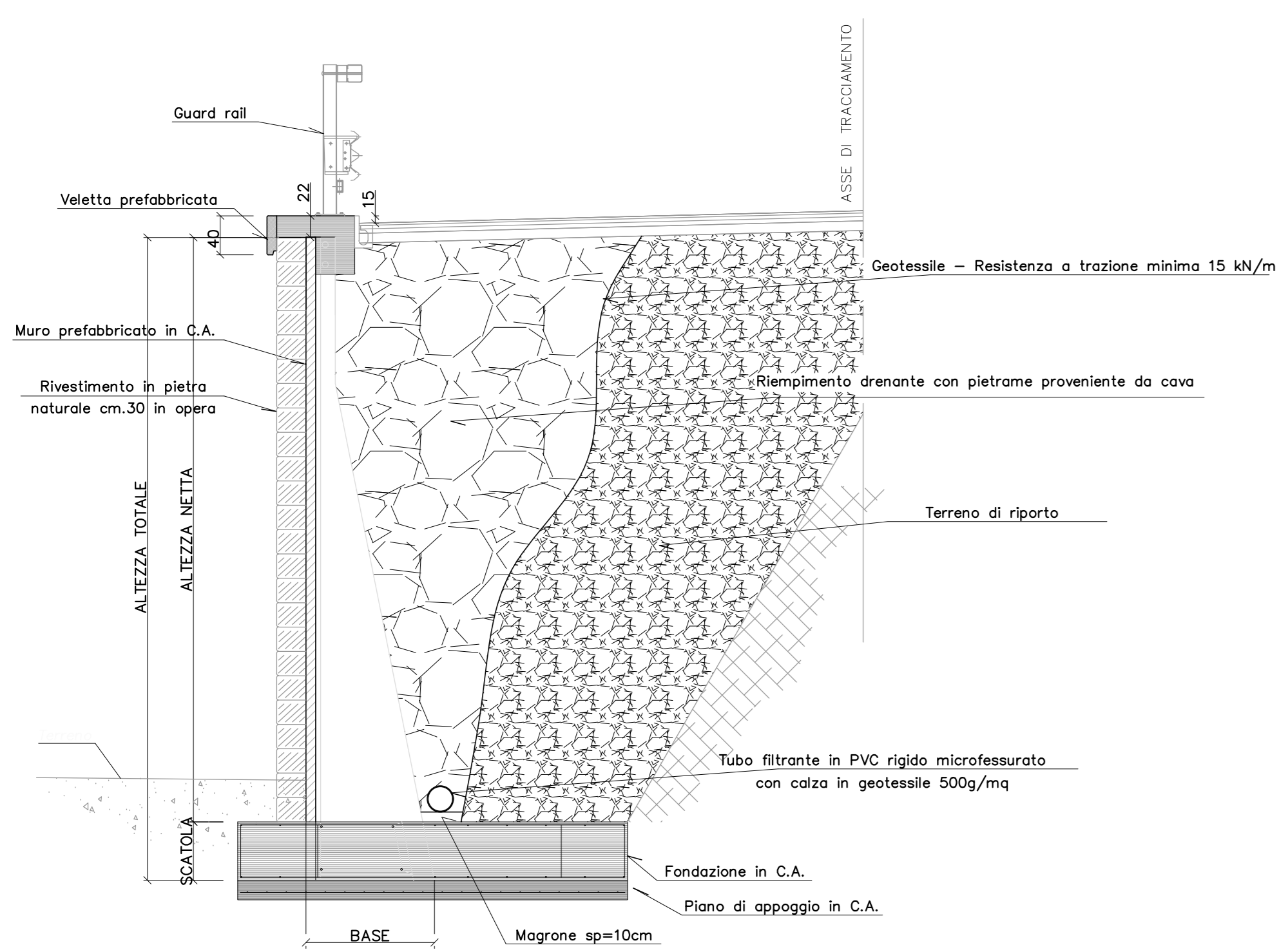
MURO DI SOSTEGNO PREFABBRICATO

MURI TIPO "T" testa 30 cm

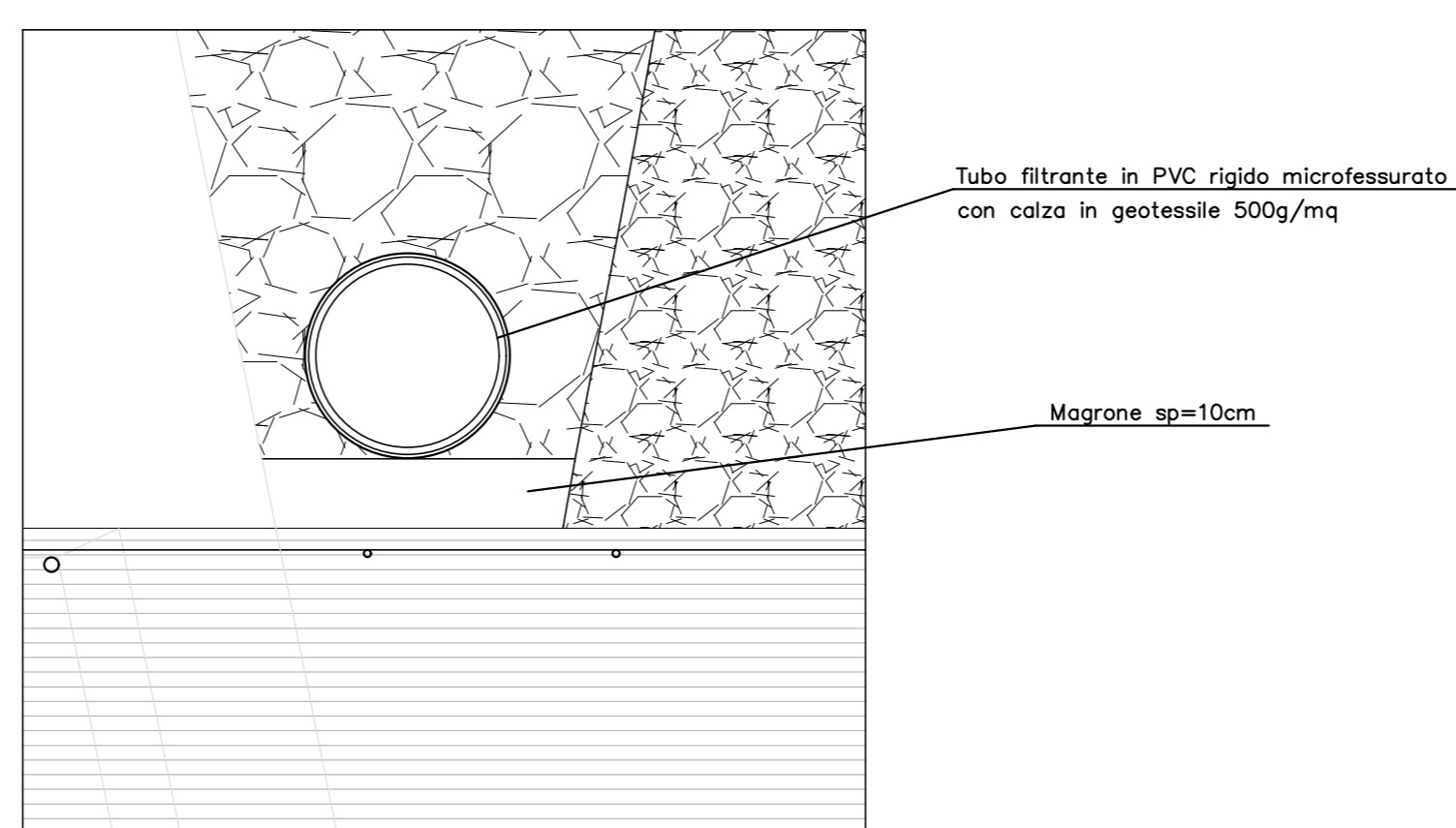
MURI TIPO "T" testa 70 cm



SEZIONE TIPO MURO SOSTEGNO



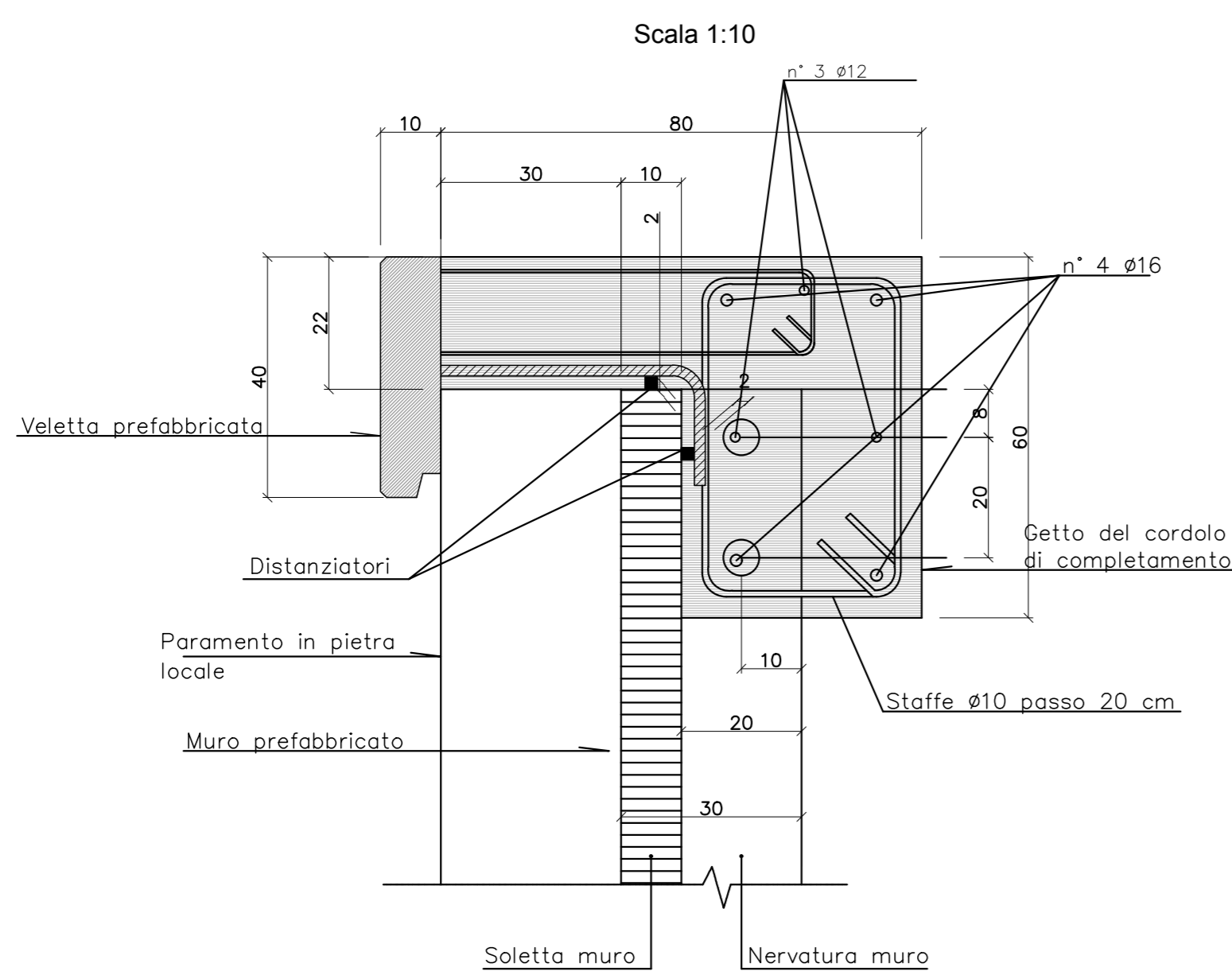
PARTICOLARE Scala 1:20



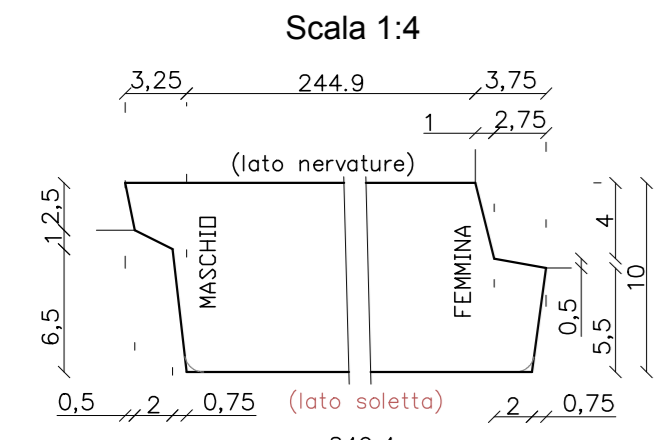
PRESCRIZIONI PER I MATERIALI

calcestruzzo prefabbricato : C35/45 classe esposizione: XD1
 calcestruzzo in opera per fondazioni: C25/30 classe esposizione: XC2
 calcestruzzo in opera piani d'appoggio: C16/20
 acciaio : B450C

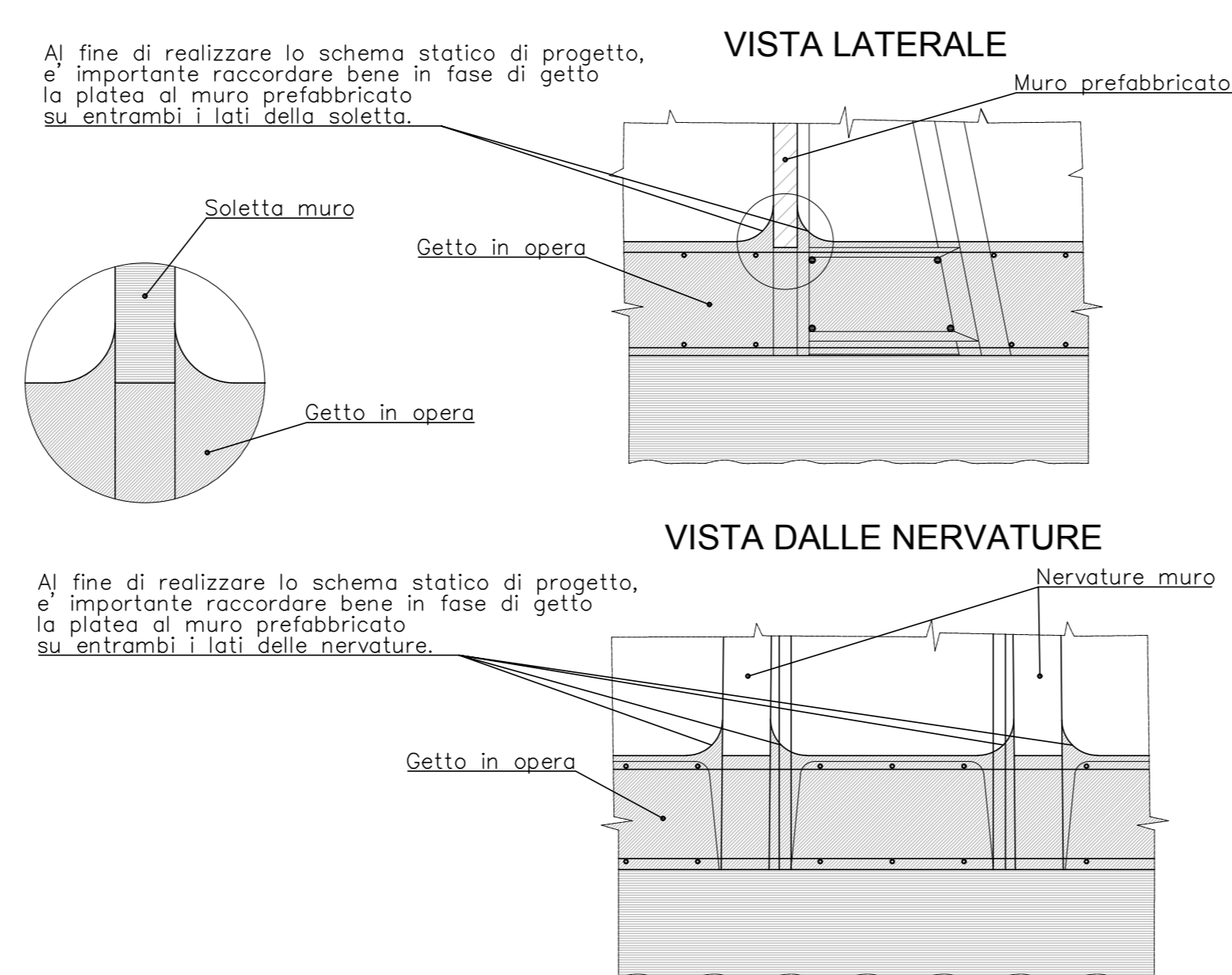
PARTICOLARE VELETTA PREFABBRICATA PER MURI PREFABBRICATI RIVESTITI IN PIETRA LOCALE



PARTICOLARE SPONDE LATERALI SOLETTA 10cm.



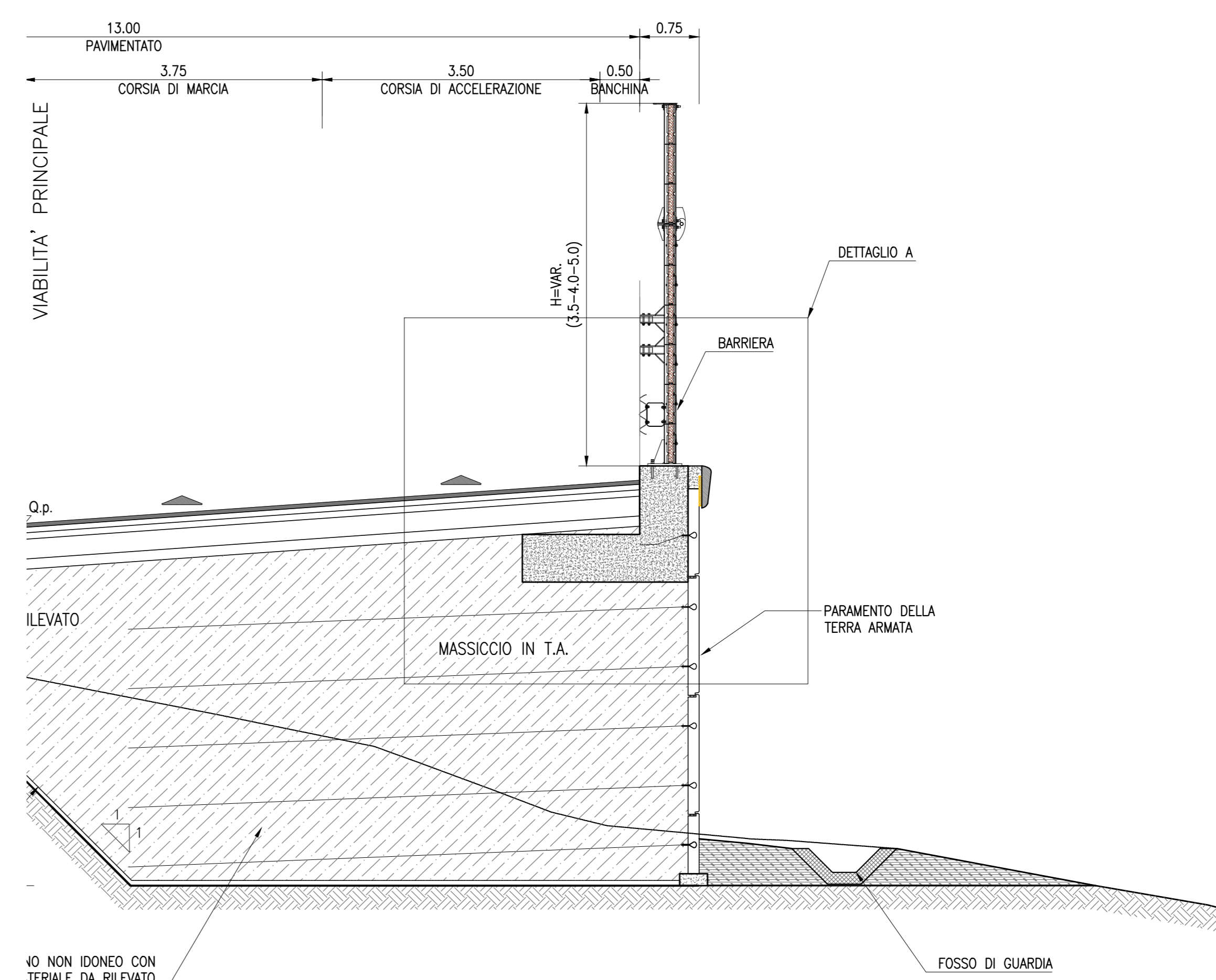
PARTICOLARE COSTRUTTIVO PER MURI TIPO "T"



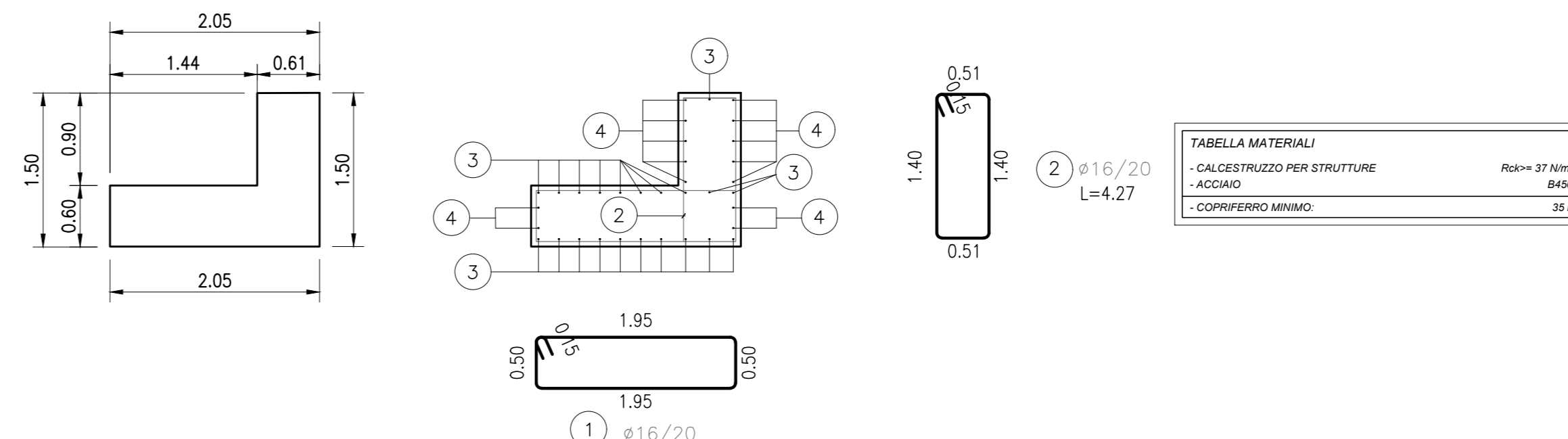
MURO IN TERRA ARMATA

SEZIONE TIPO

scala 1:50



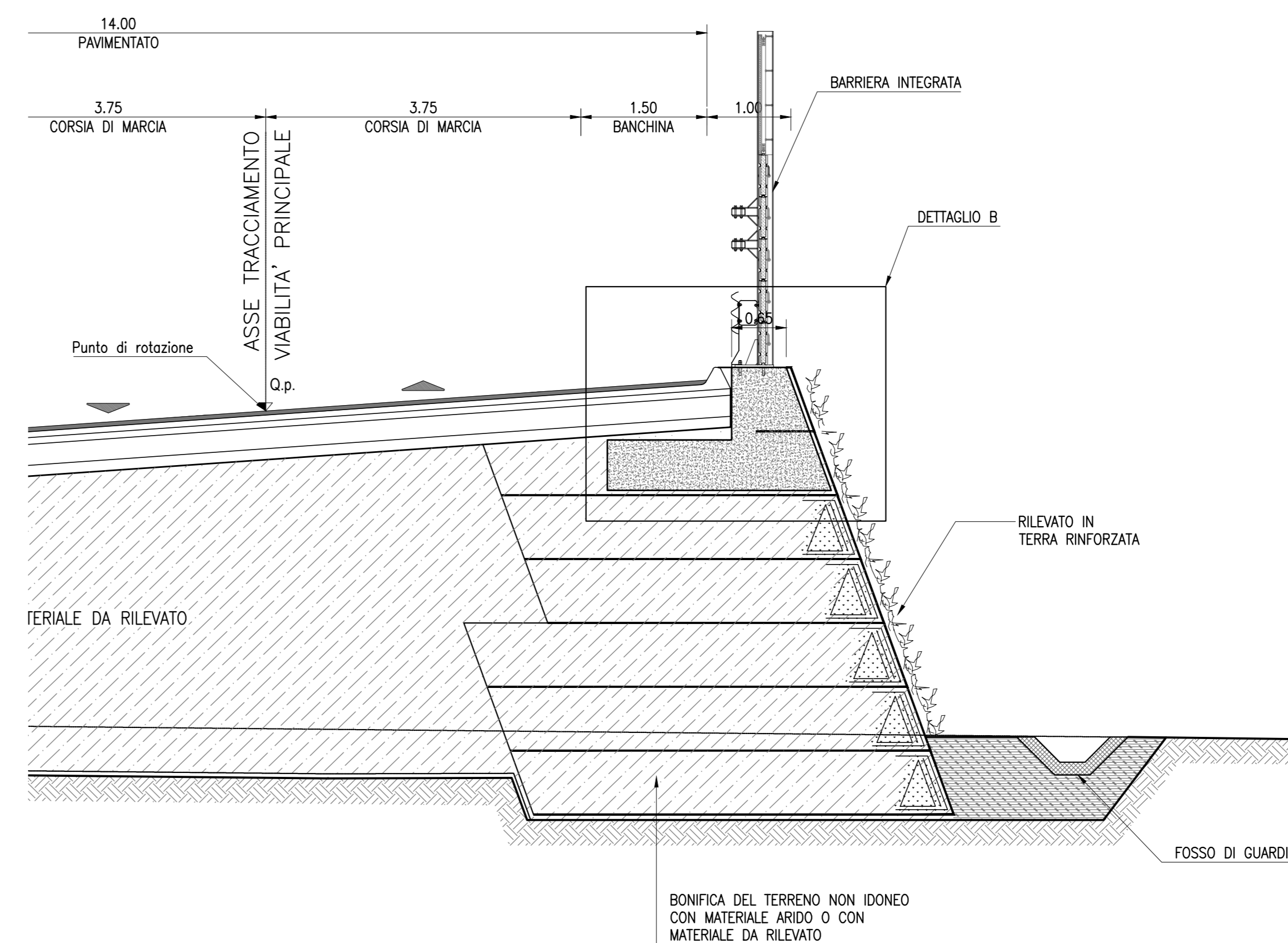
DETTAGLIO A - carpenteria e armatura cordolo



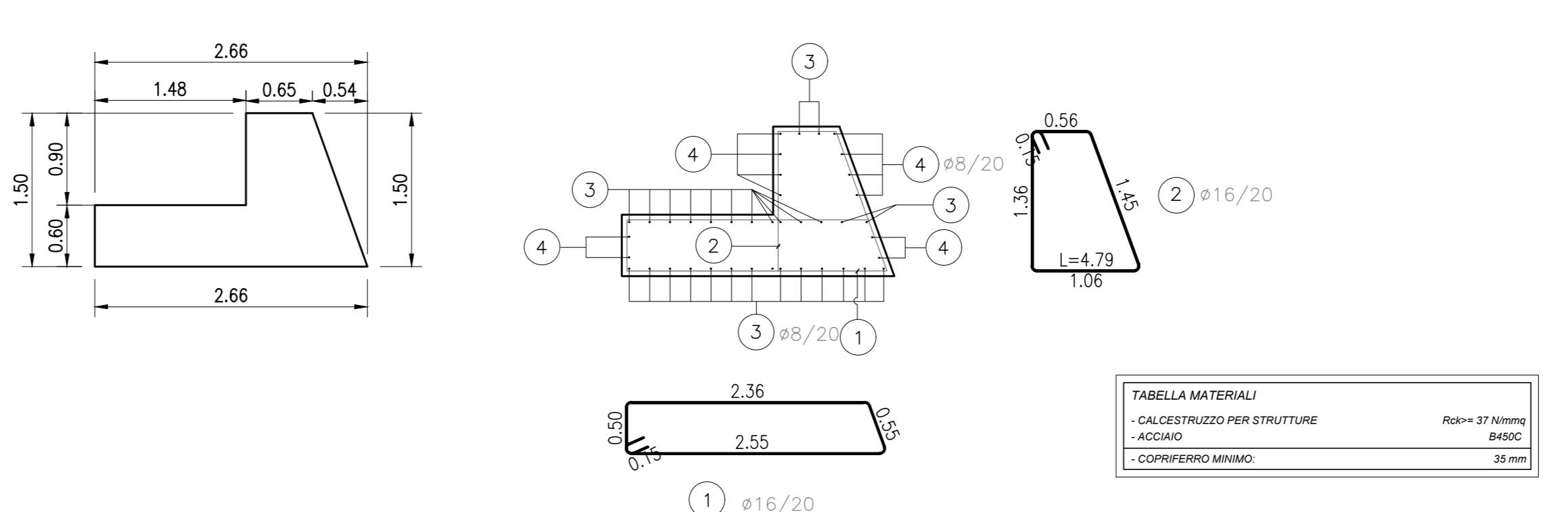
MURO IN TERRA RINFORZATA

SEZIONE TIPO

scala 1:50



DETTAGLIO B - Carpenteria e armatura cordolo



| CODICE PROGETTO | LV. PROJ. | NOME FILE | REVISIONE | SCALA |
|-----------------|-------------|----------------|-----------|------------|
| DP1GE0266 | E 20 | V010M00STRDC01 | A | VARIE |
| D | | | | |
| C | | | | |
| B | | | | |
| A | Emissione | Luglio 2020 | Ing. | Ing. |
| REV. | DESCRIZIONE | DATA | REDATTO | VERIFICATO |