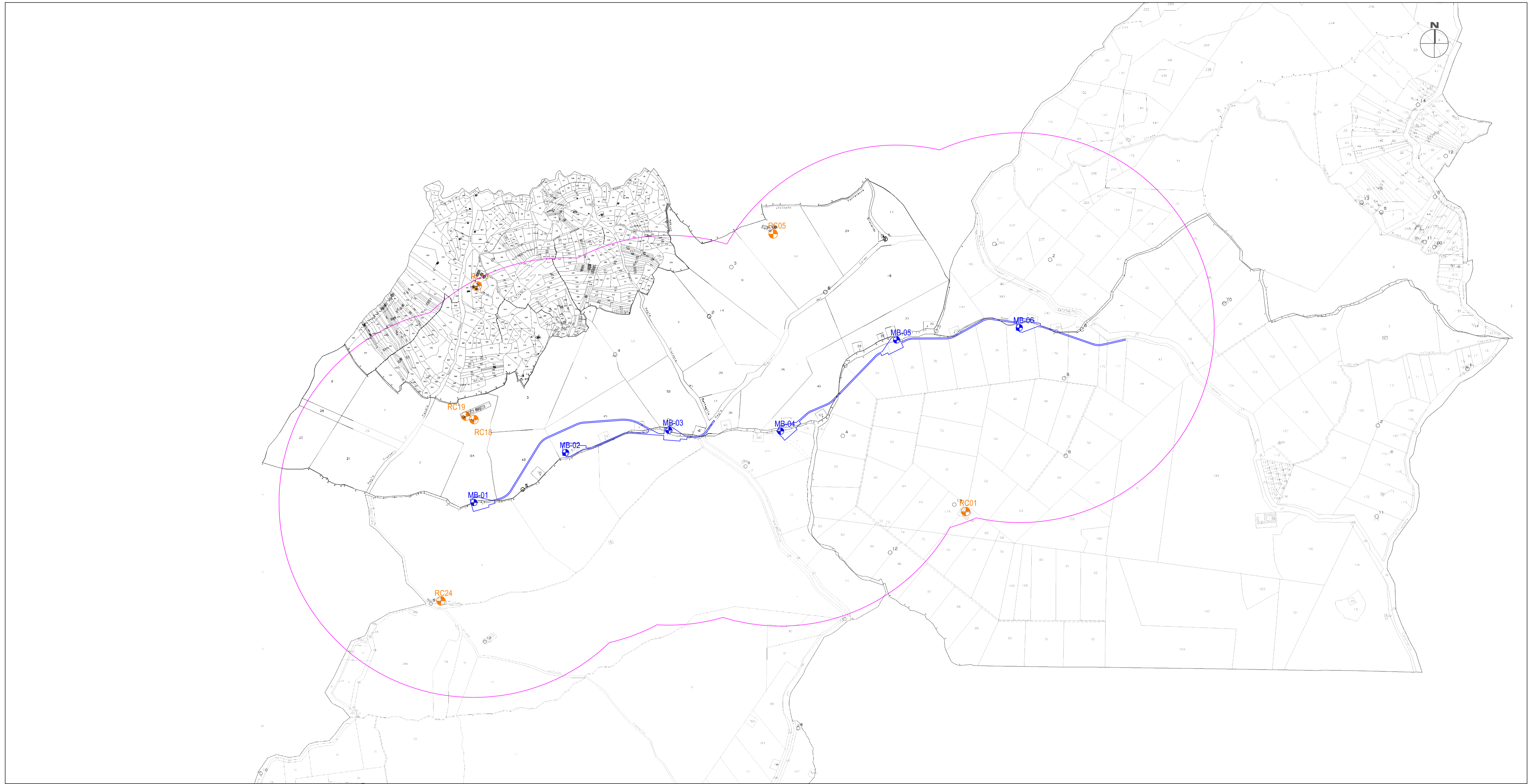
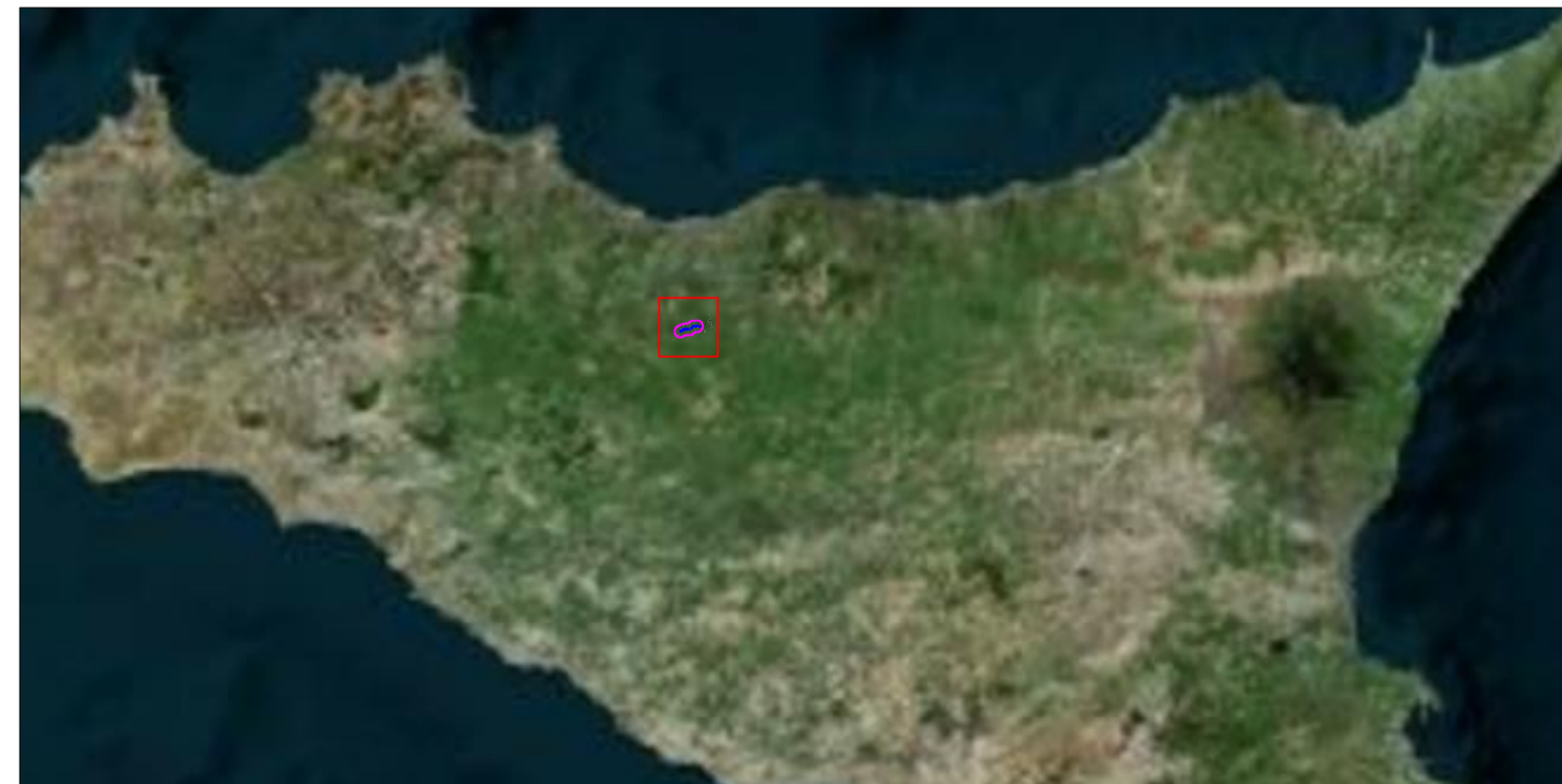





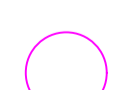
INDIVIDUAZIONE RECETTORI SU CATASTALE - Scala 1:10.000

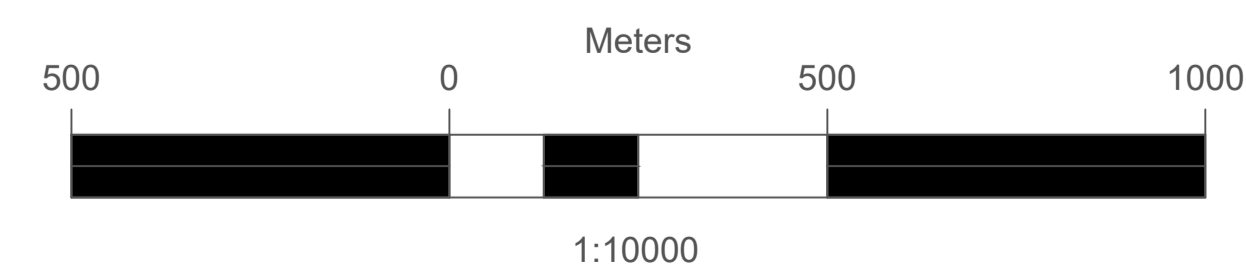


KEY MAP



LEGENDA

-  Aerogeneratori in progetto
-  Strade e piazzole in progetto
-  Recettori Sensibili
-  Area di studio (Buffer 1000 m)



REV.	DATE	DESCRIPTION	PREPARED	CHECKED	APPROVED
00	2020.07.10	Prima emissione	M. Terzi	N. Novati	L. Lavazza
PROJECT: INTEGRALE RICOSTRUZIONE DELL'IMPIANTO EOLICO DI MONTEMAGGIORE BELSITO					
FILE NAME: GRE.EEC.D.73.IT.W.14180.05.002.00 - Individuazione recettori su catastale					
CLASSIFICATION: PUBLIC		FORMAT: A1	SCALE: 1:10.000	PLOT SCALE: -	SHEET: 1 di 1
UTILIZATION SCOPE: BASIC DESIGN			TITLE: Individuazione recettori su catastale		
VALIDATED BY: Iacifano		EGP CODE:			
VERIFIED BY: Magri	EGP CODE:				
COLLABORATORS: Lenci	GROUP: GRE	FUNCTION: EEC	TYPE: D73	ISSUER: ITW	COUNTRY: 141800500200
This document is property of Enel Green Power SpA. It is strictly forbidden to reproduce this document, in whole or in part, and to provide to others any related information without the previous written consent by Enel Green Power SpA.					