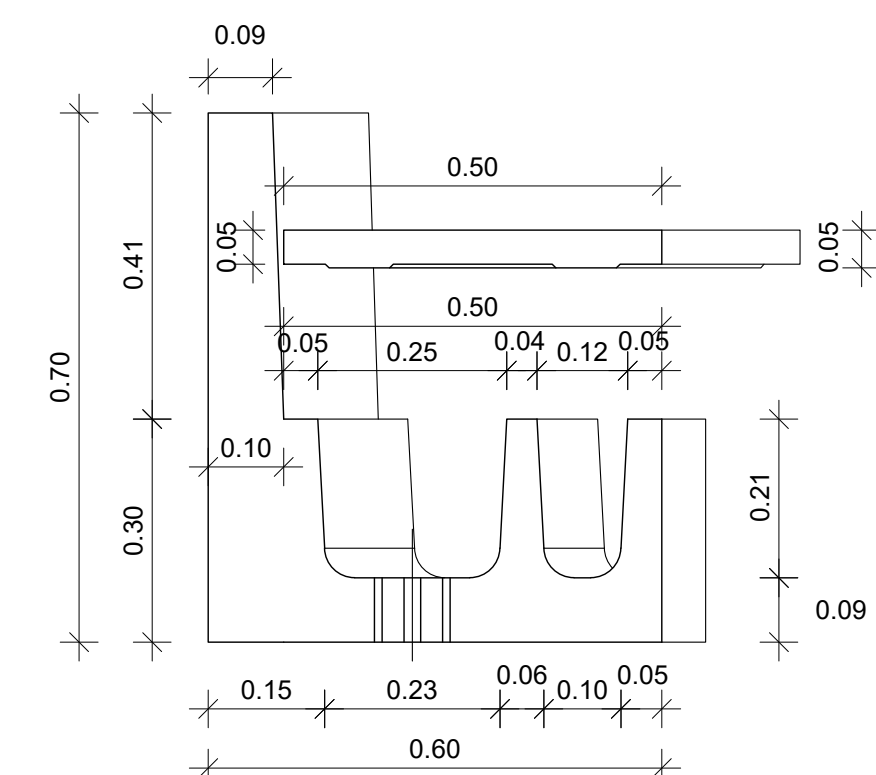


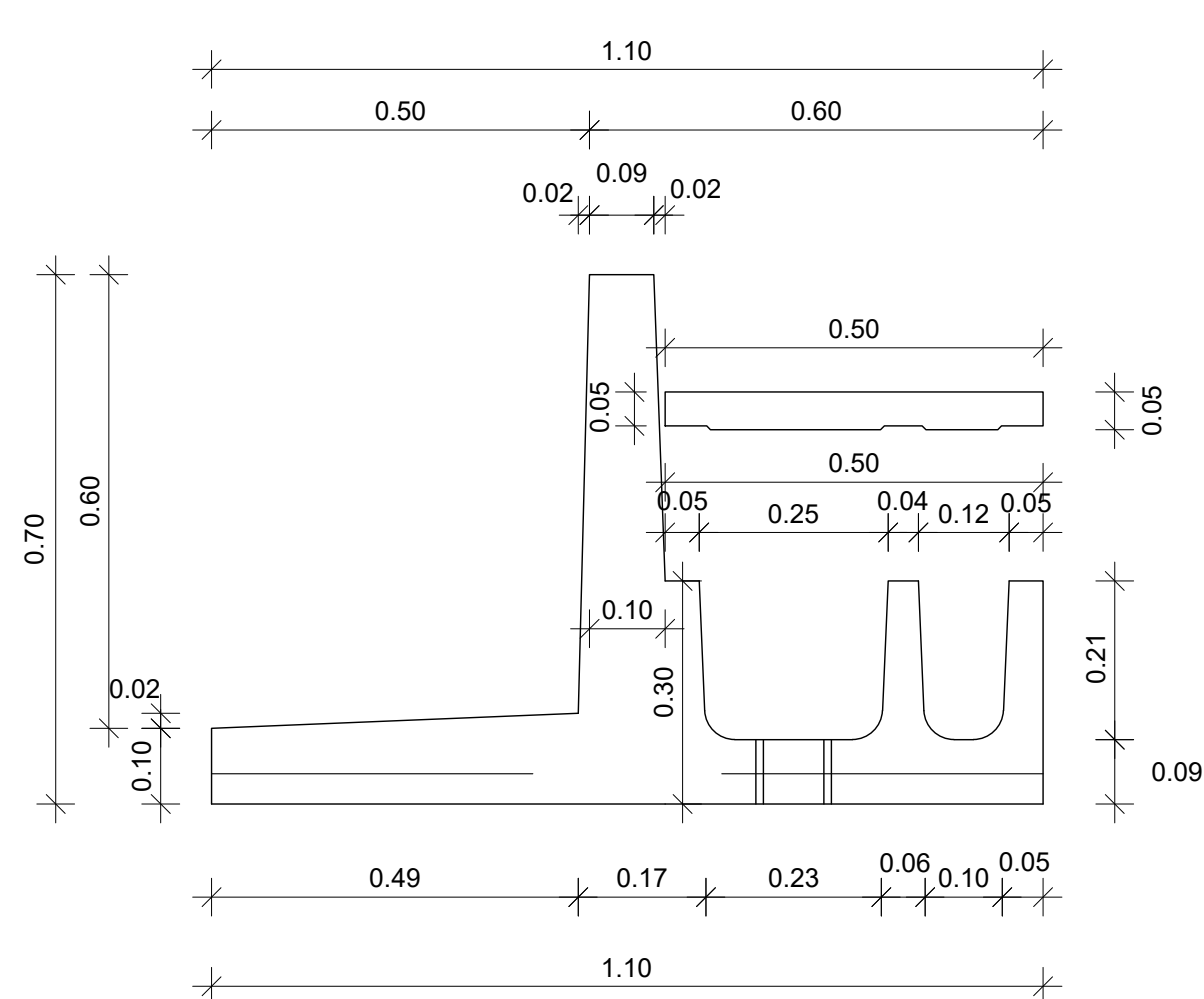
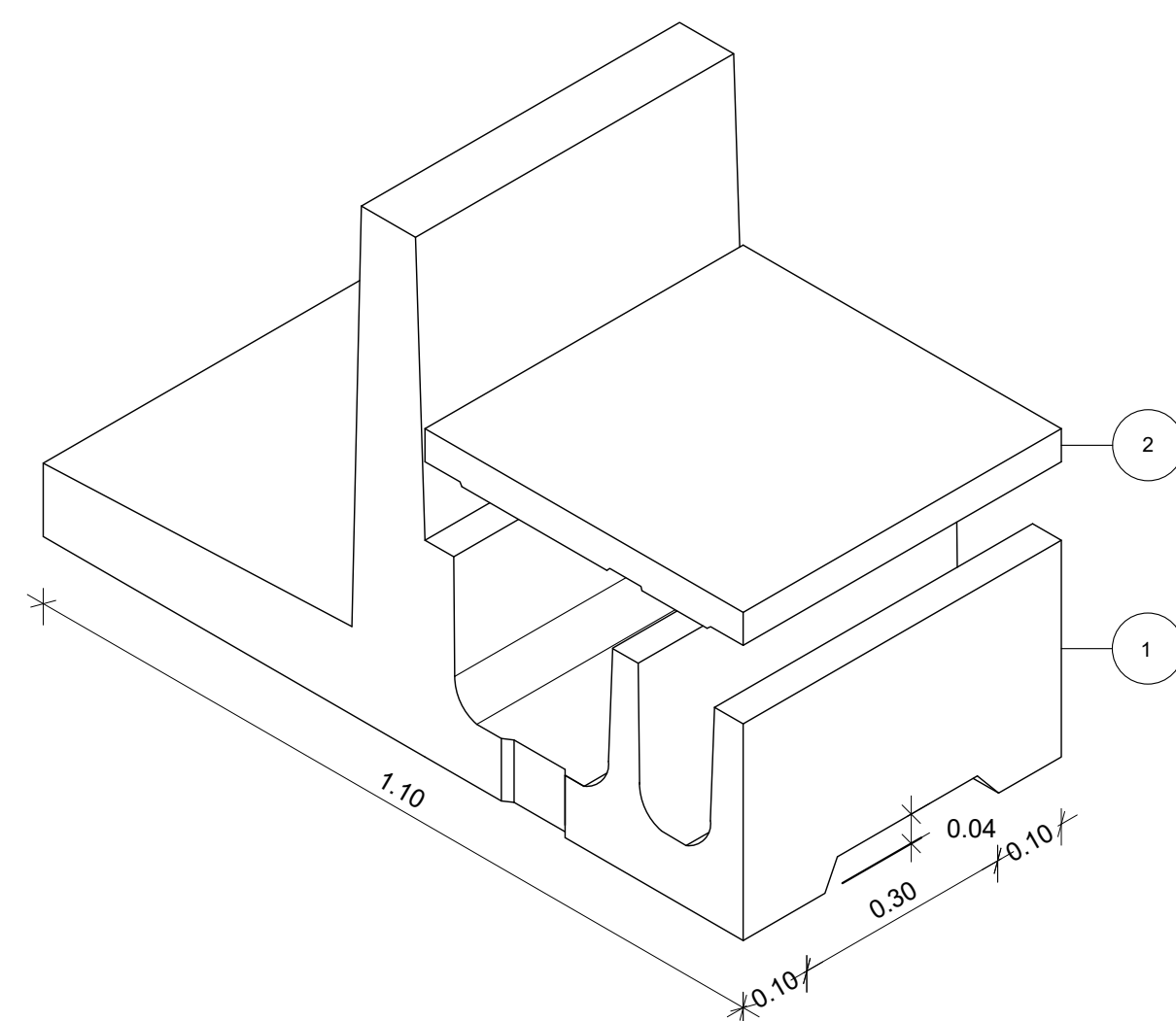
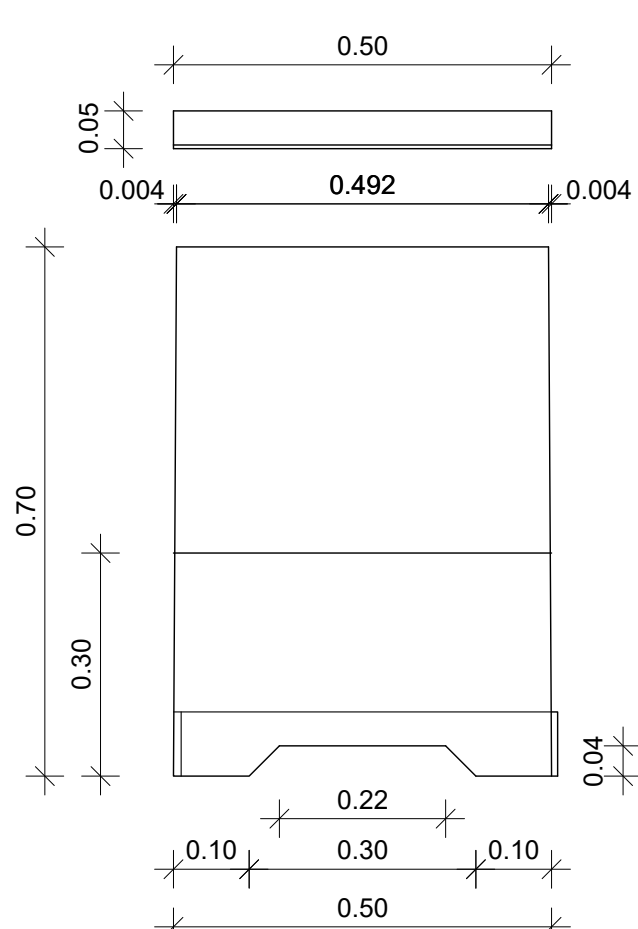
Particolari elementi canalette portacavi

scala 1:10

codice	denominazione	peso KG/PZ	
1	082511	BASE	158
2	082521	COPERCHIO	27
3	082522	COPERCHIO	27



codice	denominazione	peso KG/AL	
1	082513	BASE	430
2	081972	COPERCHIO	80

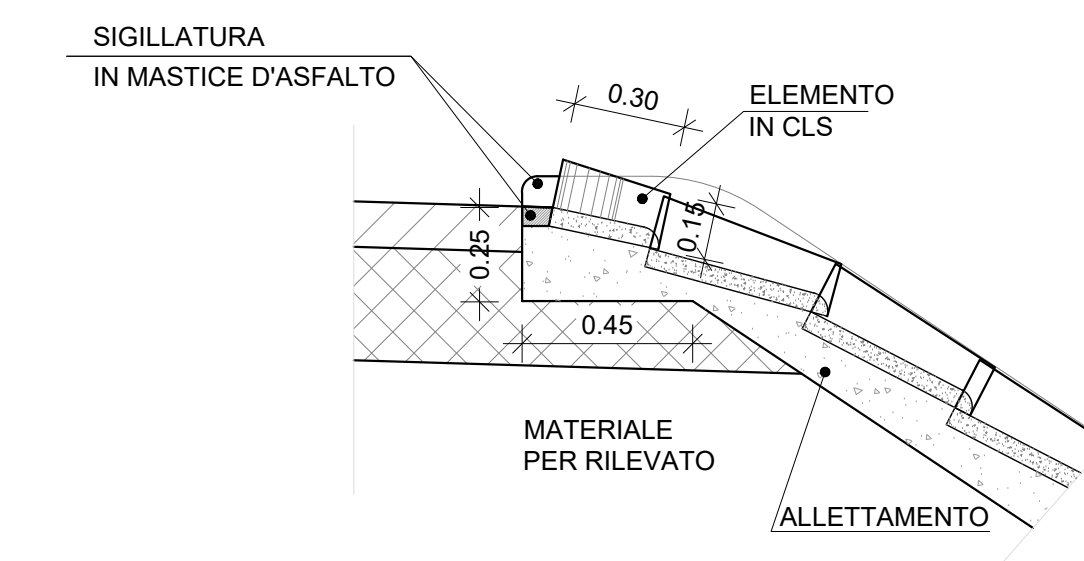
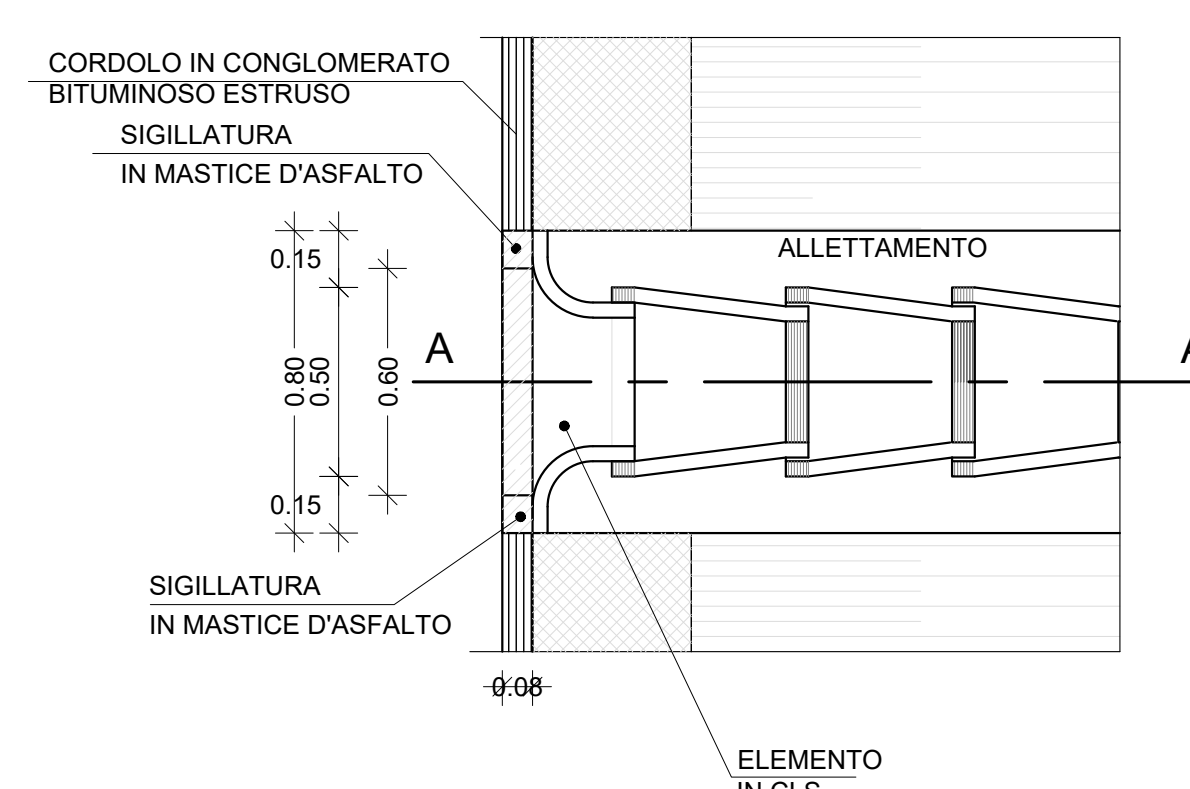


Dettaglio attacco embrici a monte del rilevato

scala 1:20

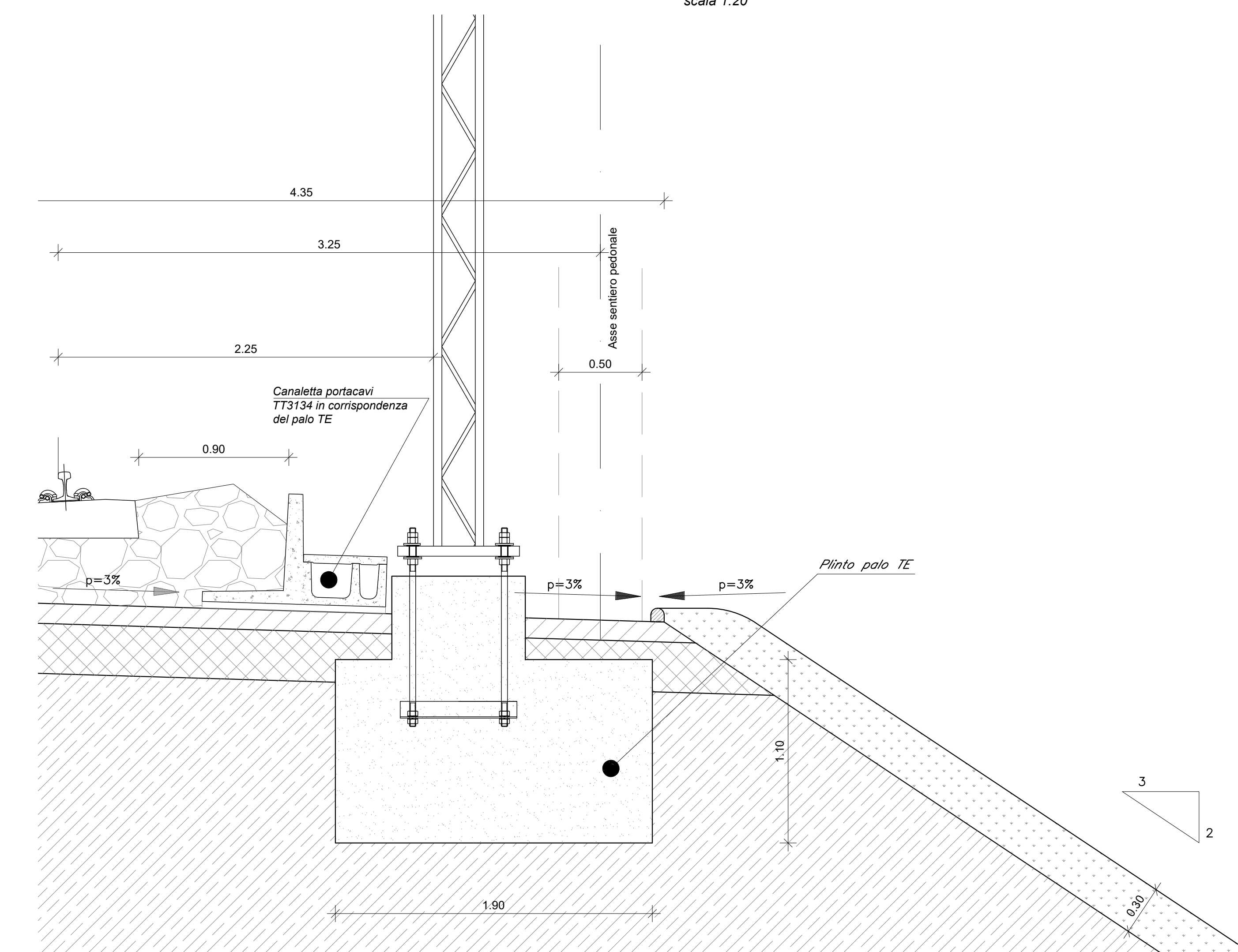
Pianta

Sezione A-A



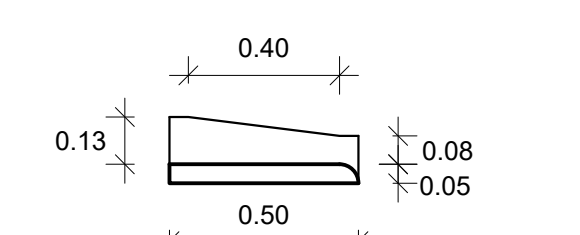
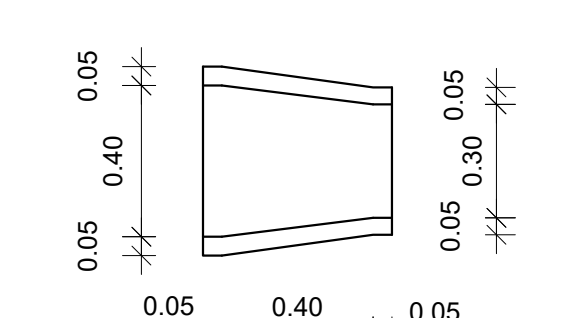
Dettaglio sistemazione scarpata rilevato in presenza del plinto della TE

scala 1:20



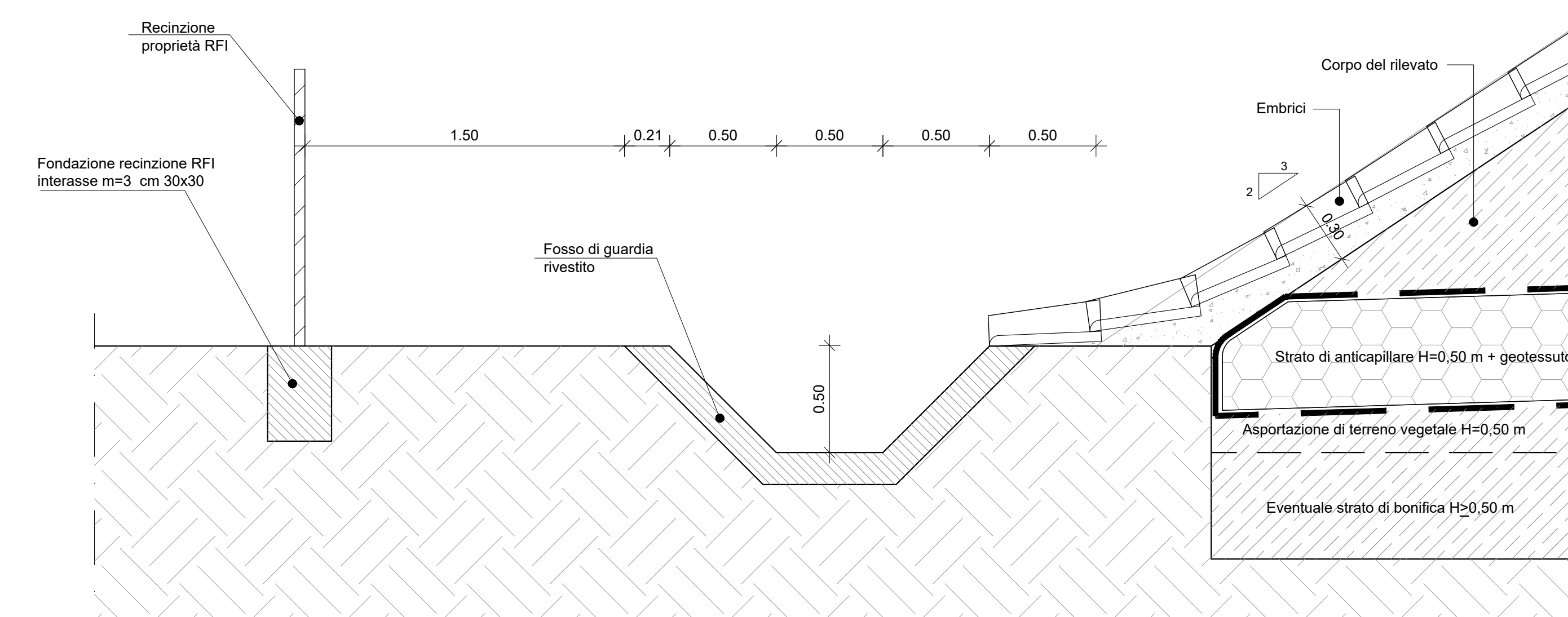
Dettagli elemento embrice tipo

scala 1:20



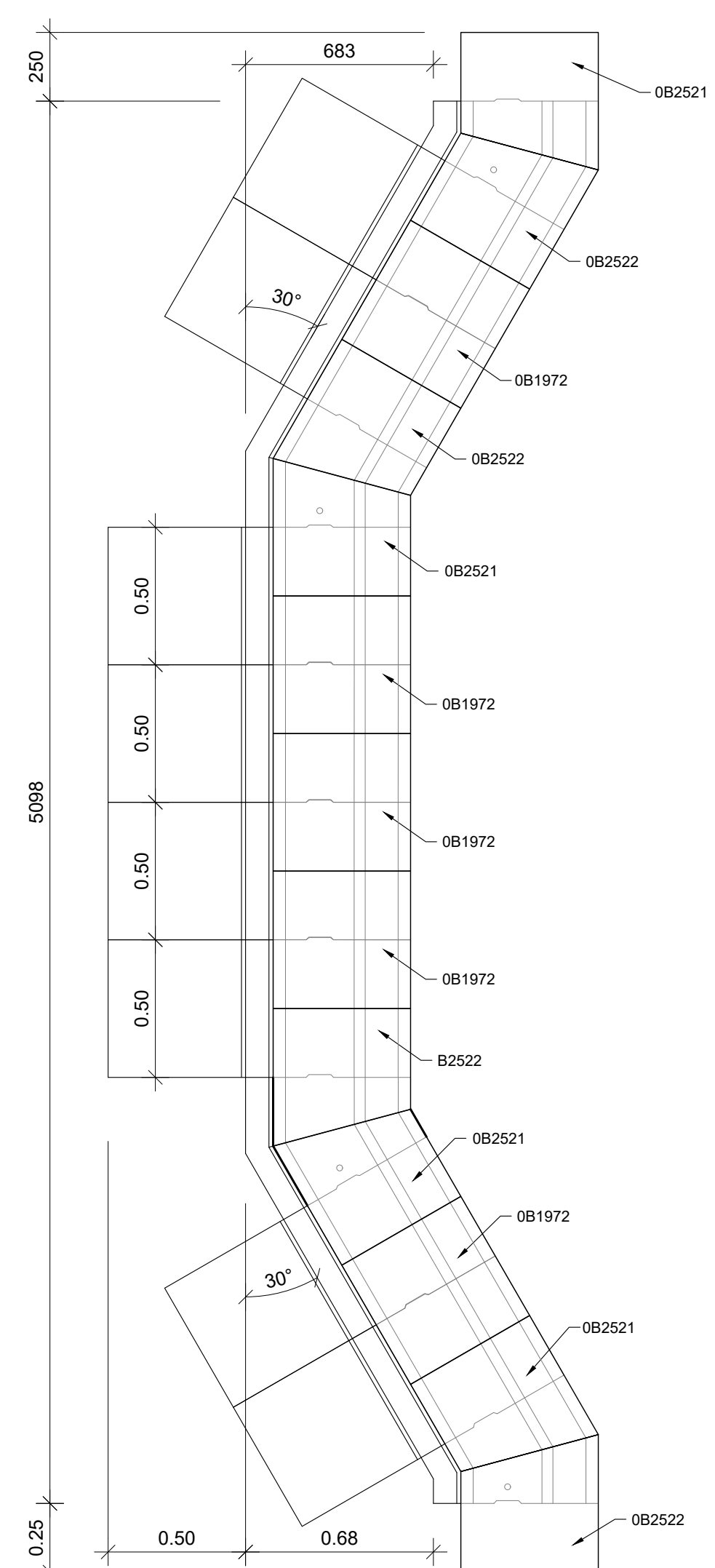
Dettaglio Fosso di guardia ai piedi del rilevato

scala 1:20



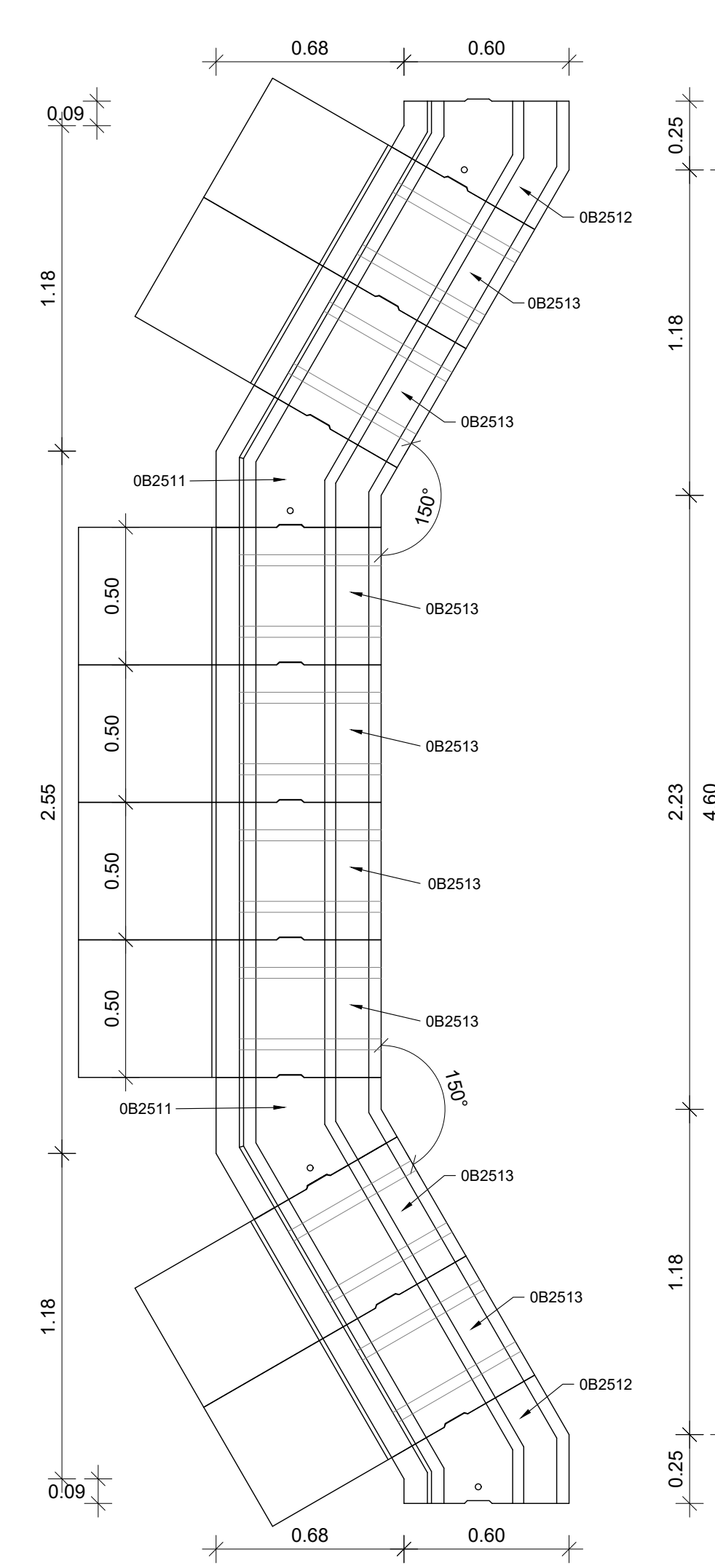
Schema disposizione coperchi

scala 1:20



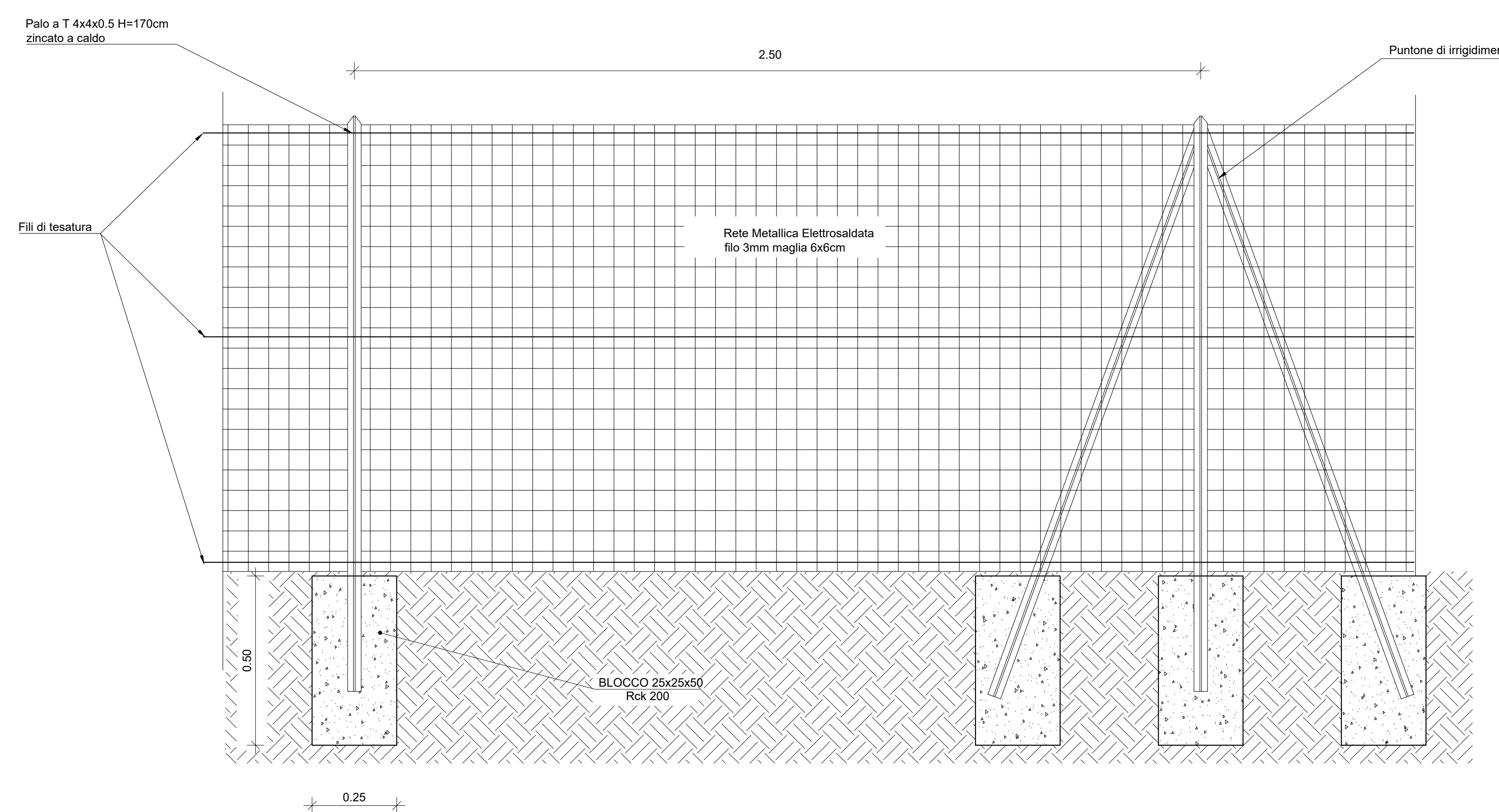
Schema disposizione basi

scala 1:20

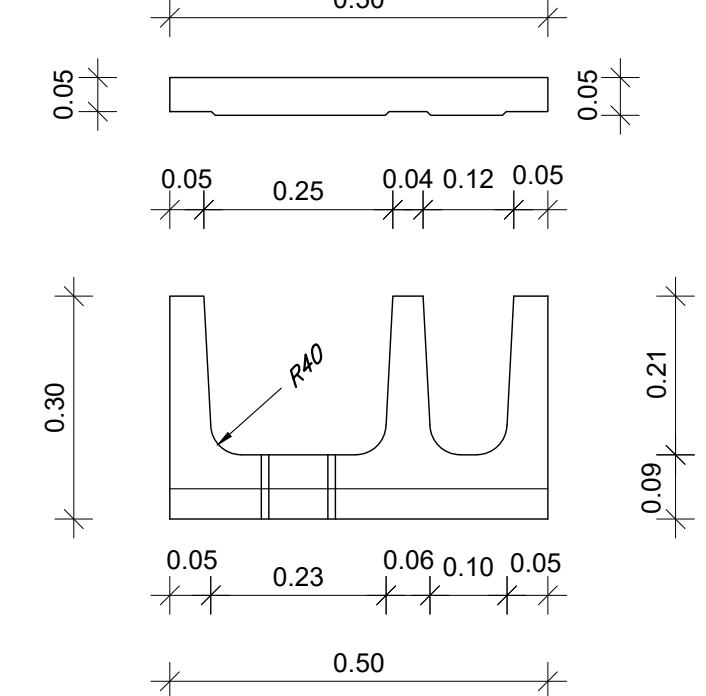
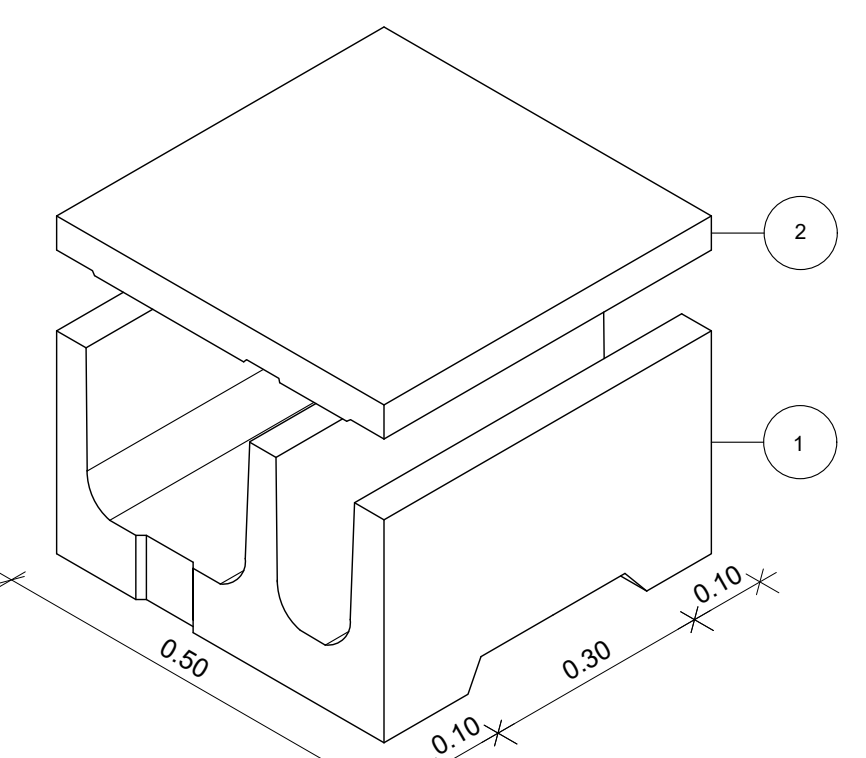
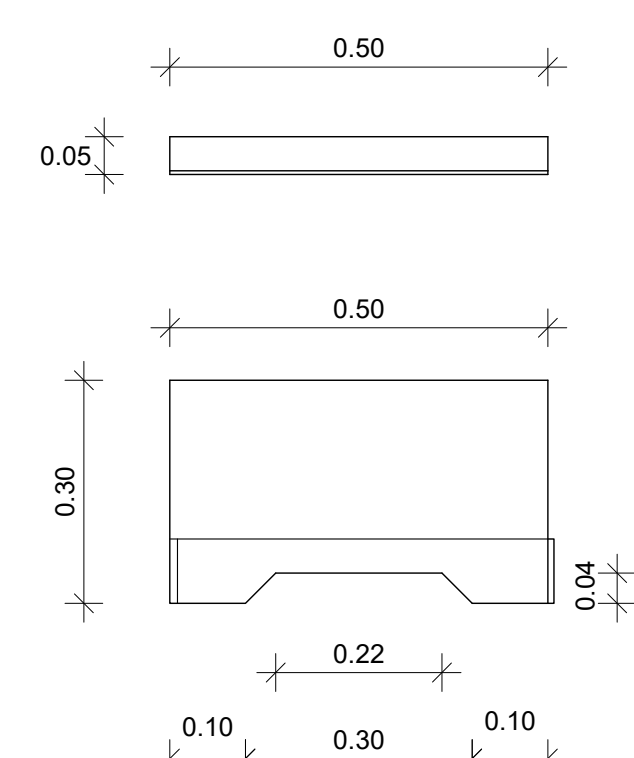


Particolare recinzione

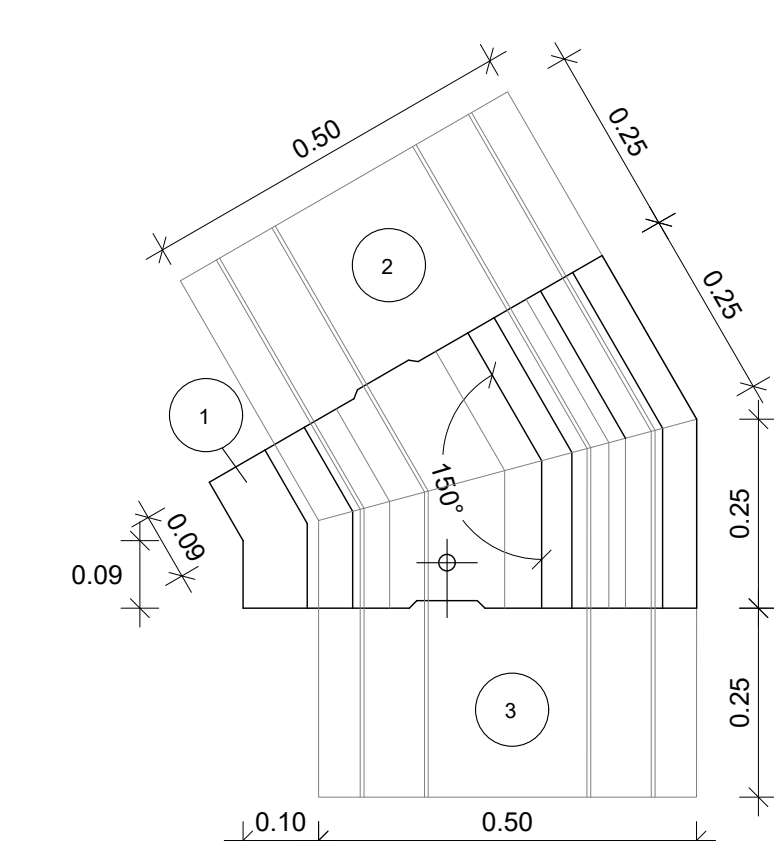
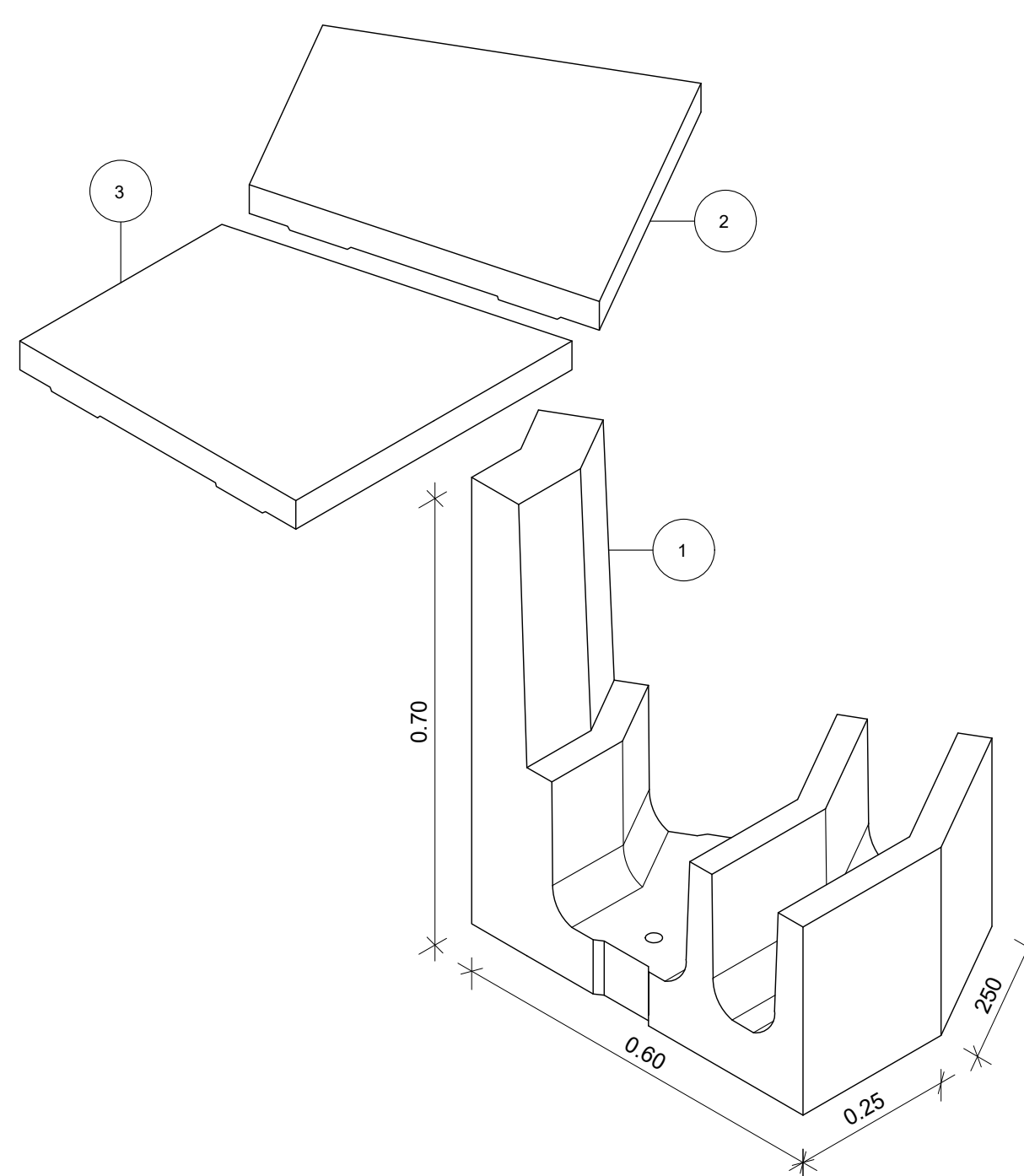
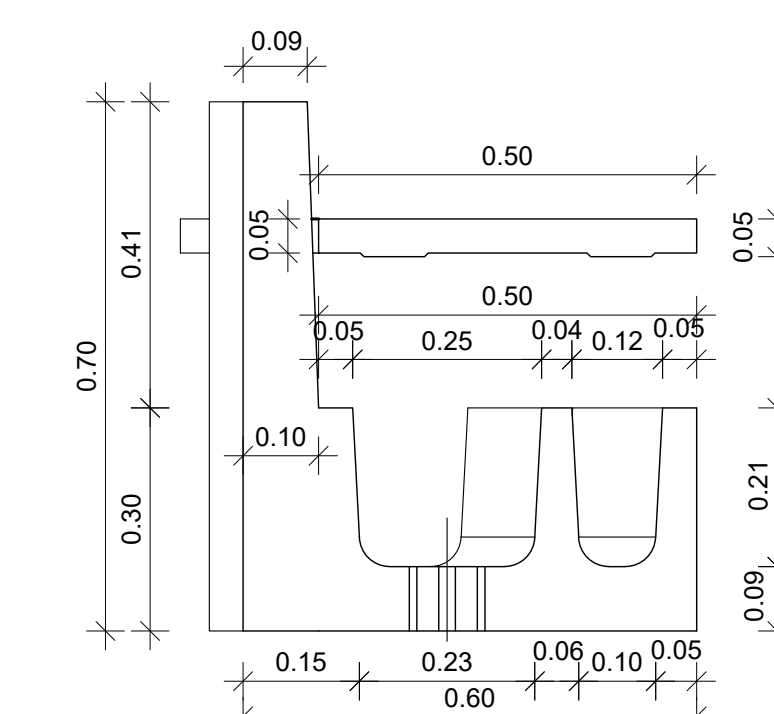
scala 1:10



codice	denominazione	peso KG/AL	
1	081970	BASE	165
2	081972	COPERCHIO	80



codice	denominazione	peso KG/PZ	
1	082512	BASE	105
2	082521	COPERCHIO	27
3	082522	COPERCHIO	27



COMMITTENTE: **RFI** INFRASTRUTTURE FERROVIARIE ITALIANE GRUPPO FERROVIE DELLO STATO ITALIANE

PROGETTAZIONE: **ITALFERR** GRUPPO FERROVIE DELLO STATO ITALIANE

DIREZIONE TECNICA
U.O. COORDINAMENTO NO CAPTIVE E INGEGNERIA DI SISTEMA
PROGETTO DEFINITIVO

COLLEGAMENTO FERROVIARIO DELL'AEROPORTO DEL SALENTO CON LA STAZIONE DI BRINDISI

INFRASTRUTTURA FERROVIARIA - Sezioni tipo corpo ferroviario
 Dettagli costruttivi

SCALA:

COMMESSA LOTTO FASE ENTE TIPO DOC. OPERA/DISCIPLINA PROG. REV.

IA7K 00 D 10 BZ IF0001 001 B

Revis.	Descrizione	Redatto	Data	Verificato	Data	Approvato	Data	Autorizzato	Data
A	Emissione esecutiva	P. Luciani	04/2019	A. Donelli	04/2019	T. Paoletti	04/2019	L. Bernardi	04/2019
B	Emissione esecutiva	P. Luciani	04/2019	A. Donelli	04/2019	T. Paoletti	04/2019	L. Bernardi	04/2019

File:IA7K0001082F0011001B.dwg n. Elab.: