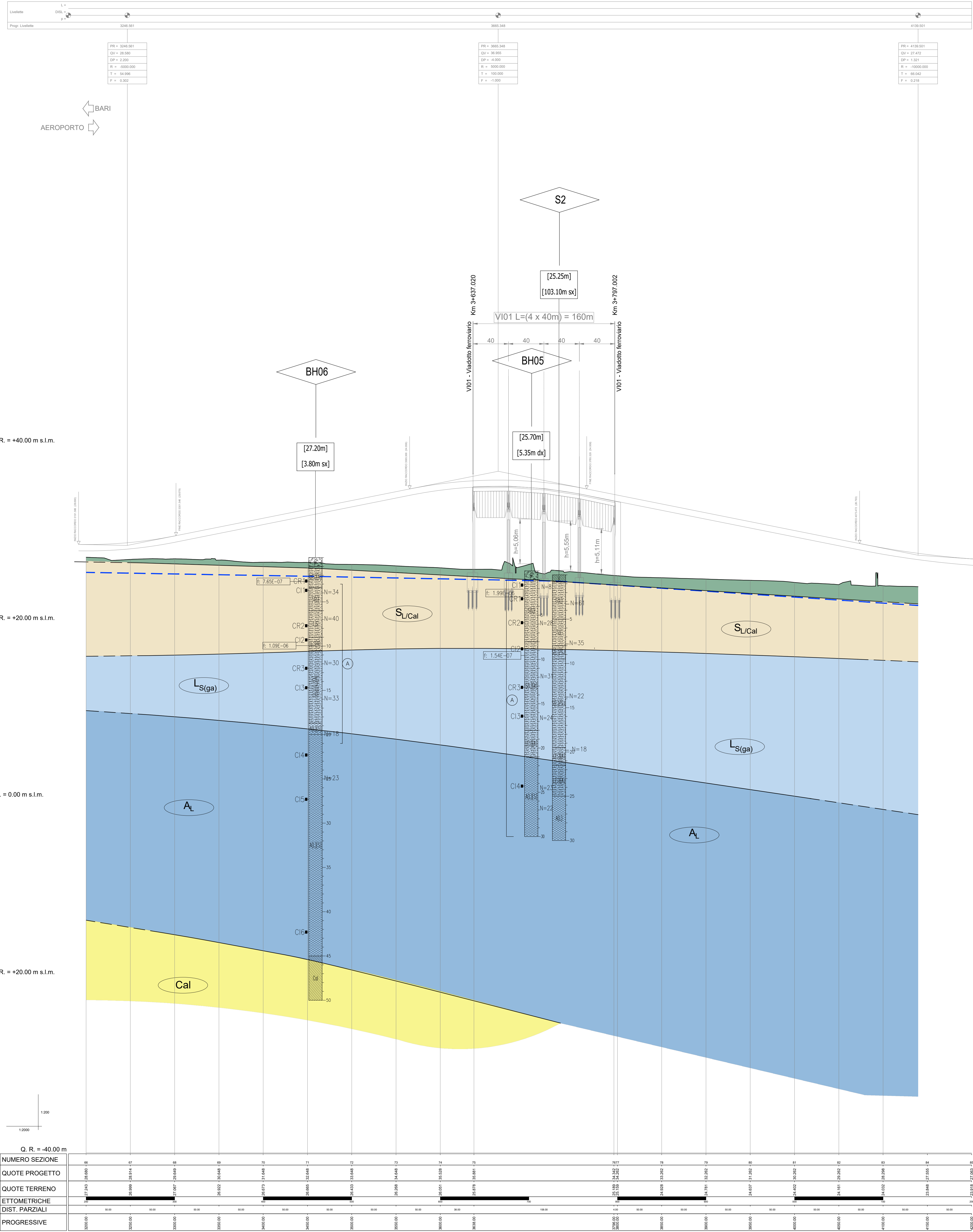
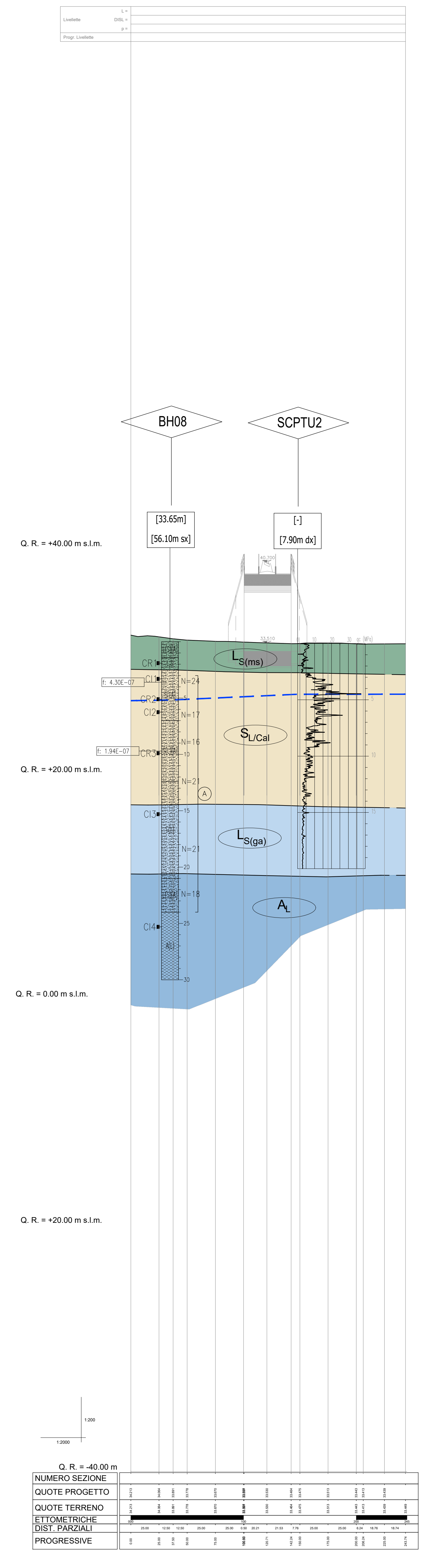


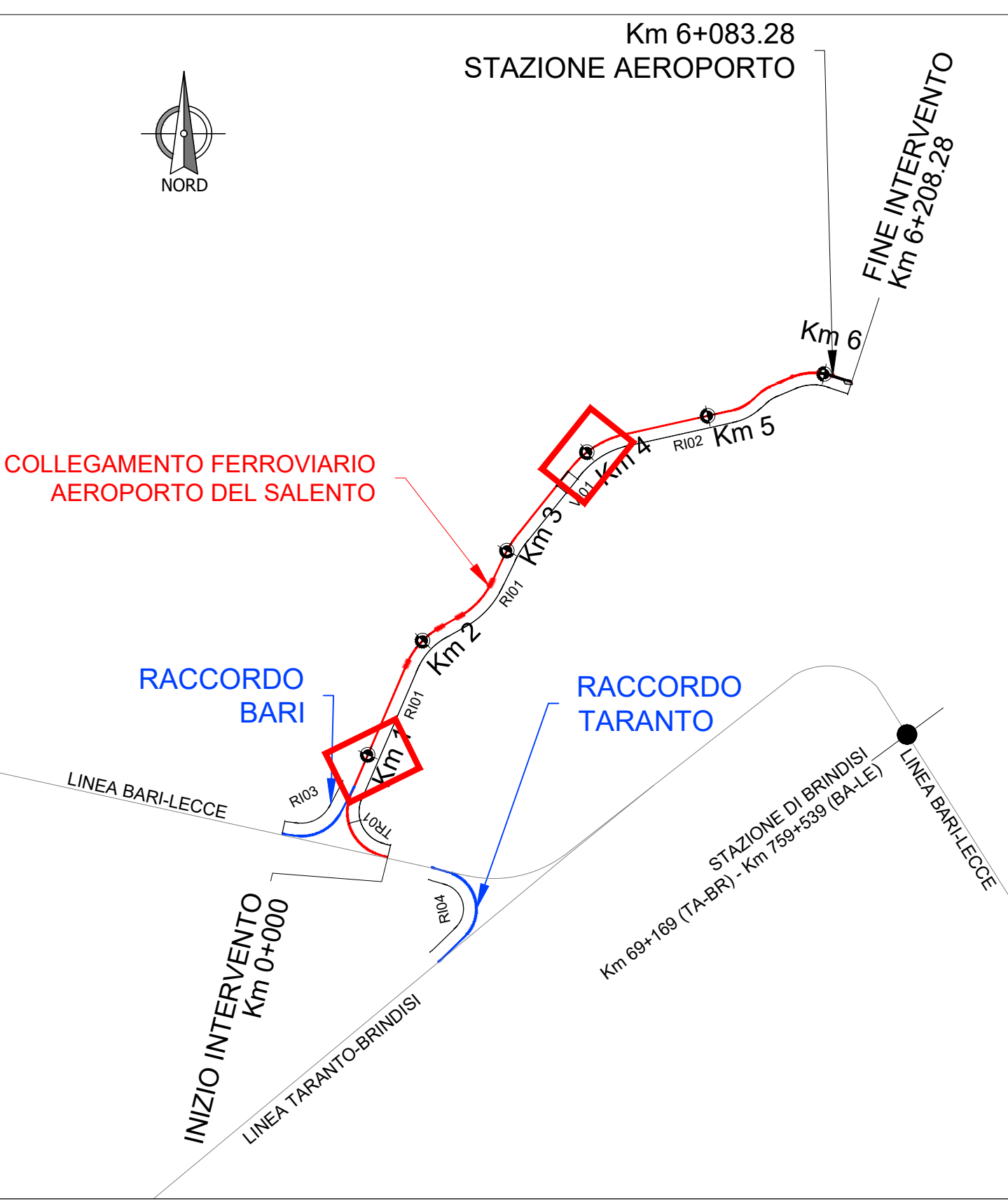
VI01 - Viadotto ferroviario



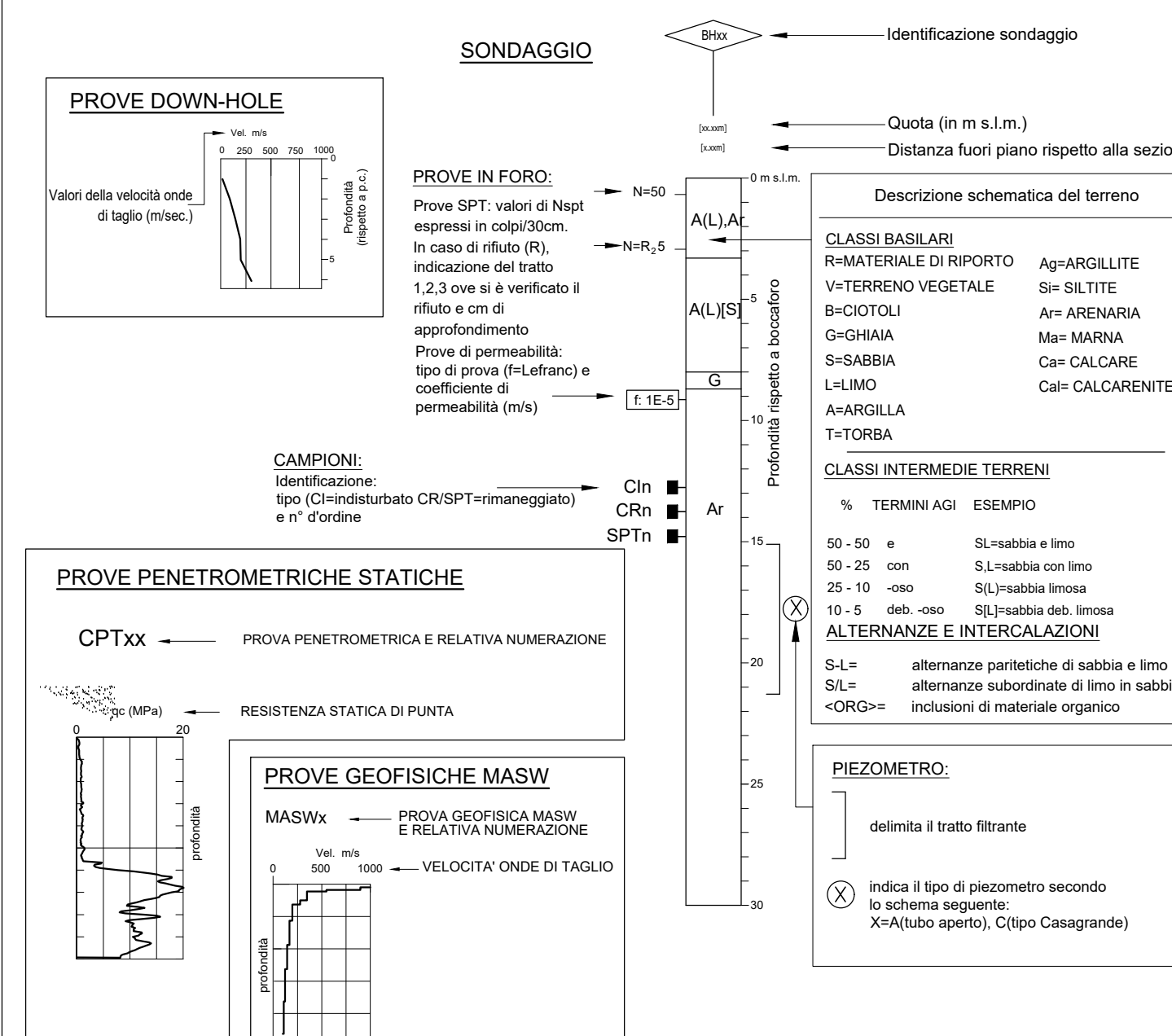
NV01 SL01 - Sottovia SP-42



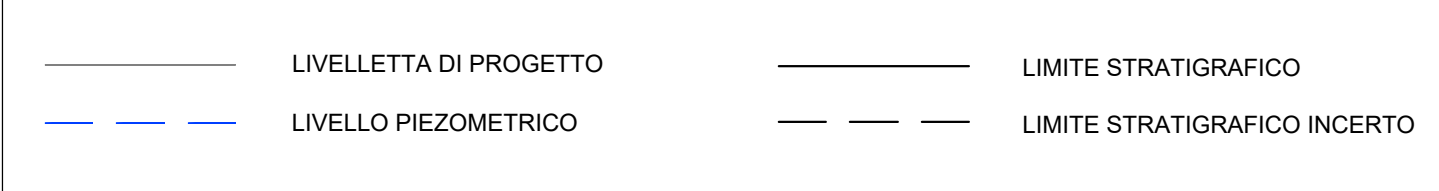
PIANTA CHIAVE



LEGENDA INDAGINI



LEGENDA PROFILO



LEGENDA UNITA' GEOTECNICHE

UNITA' GEOTECNICA	DESCRIZIONE MATERIALE	UNITA' GEOLOGICA
R	Materiale di riporto	-
L <sub>S(ga)</sub>	Limo sabbioso, argilloso marrone scuro	Q1s
S <sub>U</sub> Cal	Sabbia limosa e limo sabbioso argilloso color avana, con possibili intercalazioni calcarenitiche	Q1s (+Q1c)
L <sub>S(ga)</sub>	Limo sabbioso o sabbia limosa o sabbia con limo grigio azzurro	ASP
A	Argilla limosa o limo argilloso grigio azzurro	ASP
Cal	Depositi calcarenitici	GRA

COMMITTENTE:  
**RFI**  
 RIF. FERROVIARIA ITALIANA  
 GRUPPO FERROVIE DELLO STATO ITALIANE

PROGETTAZIONE:  
**ITALFERR**  
 GRUPPO FERROVIE DELLO STATO ITALIANE

**DIREZIONE TECNICA**  
**U.O. COORDINAMENTO NO CAPTIVE E INGEGNERIA DI SISTEMA**

**PROGETTO DEFINITIVO**  
**COLLEGAMENTO FERROVIARIO DELL'AEROPORTO DEL SALENTO CON LA STAZIONE DI BRINDISI**

**GEOTECNICA**  
 Sezioni geotecniche di dettaglio in corrispondenza delle opere d'arte ferroviarie

NUMERO SEZIONE	QUOTE PROGETTO	QUOTE TERRENO	ETOMETRICHE	DIST. PARZIALI	PROGRESSIVE
1	2420	2420	2420	0	2420
2	2420	2420	2420	0	2420
3	2420	2420	2420	0	2420
4	2420	2420	2420	0	2420
5	2420	2420	2420	0	2420
6	2420	2420	2420	0	2420
7	2420	2420	2420	0	2420
8	2420	2420	2420	0	2420
9	2420	2420	2420	0	2420
10	2420	2420	2420	0	2420
11	2420	2420	2420	0	2420
12	2420	2420	2420	0	2420
13	2420	2420	2420	0	2420
14	2420	2420	2420	0	2420
15	2420	2420	2420	0	2420
16	2420	2420	2420	0	2420
17	2420	2420	2420	0	2420
18	2420	2420	2420	0	2420
19	2420	2420	2420	0	2420
20	2420	2420	2420	0	2420
21	2420	2420	2420	0	2420
22	2420	2420	2420	0	2420
23	2420	2420	2420	0	2420
24	2420	2420	2420	0	2420
25	2420	2420	2420	0	2420
26	2420	2420	2420	0	2420
27	2420	2420	2420	0	2420
28	2420	2420	2420	0	2420
29	2420	2420	2420	0	2420
30	2420	2420	2420	0	2420
31	2420	2420	2420	0	2420
32	2420	2420	2420	0	2420
33	2420	2420	2420	0	2420
34	2420	2420	2420	0	2420
35	2420	2420	2420	0	2420
36	2420	2420	2420	0	2420
37	2420	2420	2420	0	2420
38	2420	2420	2420	0	2420
39	2420	2420	2420	0	2420
40	2420	2420	2420	0	2420
41	2420	2420	2420	0	2420
42	2420	2420	2420	0	2420
43	2420	2420	2420	0	2420
44	2420	2420	2420	0	2420
45	2420	2420	2420	0	2420
46	2420	2420	2420	0	2420
47	2420	2420	2420	0	2420
48	2420	2420	2420	0	2420
49	2420	2420	2420	0	2420
50	2420	2420	2420	0	2420
51	2420	2420	2420	0	2420
52	2420	2420	2420	0	2420
53	2420	2420	2420	0	2420
54	2420	2420	2420	0	2420
55	2420	2420	2420	0	2420
56	2420	2420	2420	0	2420
57	2420	2420	2420	0	2420
58	2420	2420	2420	0	2420
59	2420	2420	2420	0	2420
60	2420	2420	2420	0	2420
61	2420	2420	2420	0	2420
62	2420	2420	2420	0	2420
63	2420	2420	2420	0	2420
64	2420	2420	2420	0	2420
65	2420	2420	2420	0	2420
66	2420	2420	2420	0	2420
67	2420	2420	2420	0	2420
68	2420	2420	2420	0	2420
69	2420	2420	2420	0	2420
70	2420	2420	2420	0	2420
71	2420	2420	2420	0	2420
72	2420	2420	2420	0	2420
73	2420	2420	2420	0	2420
74	2420	2420	2420	0	2420
75	2420	2420	2420	0	2420
76	2420	2420	2420	0	2420
77	2420	2420	2420	0	2420
78	2420	2420	2420	0	2420
79	2420	2420	2420	0	2420
80	2420	2420	2420	0	2420
81	2420	2420	2420	0	2420
82	2420	2420	2420	0	2420
83	2420	2420	2420	0	2420
84	2420	2420	2420	0	2420
85	2420	2420	2420	0	2420
86	2420	2420	2420	0	2420
87	2420	2420	2420	0	2420
88	2420	2420	2420	0	2420
89	2420	2420	2420	0	2420
90	2420	2420	2420	0	2420
91	2420	2420	2420	0	2420
92	2420	2420	2420	0	2420
93	2420	2420	2420	0	2420
94	2420	2420	2420	0	2420
95	2420	2420	2420	0	2420
96	2420	2420	2420	0	2420
97	2420	2420	2420	0	2420
98	2420	2420	2420	0	2420
99	2420	2420	2420	0	2420
100	2420	2420	2420	0	2420

Revis.	Descrizione	Redatto	Data	Verificato	Data	Approvato	Data	Autorizzato	Data
A	Emissione esecutiva	L.Giamini	Dic 2019	A.Cavarella	Dic 2019	T.Paoletti	Dic 2019	L.Berardi	Dic 2019
B	Emissione esecutiva	L.Giamini	Dic 2019	A.Cavarella	Dic 2019	T.Paoletti	Dic 2019	L.Berardi	Dic 2019