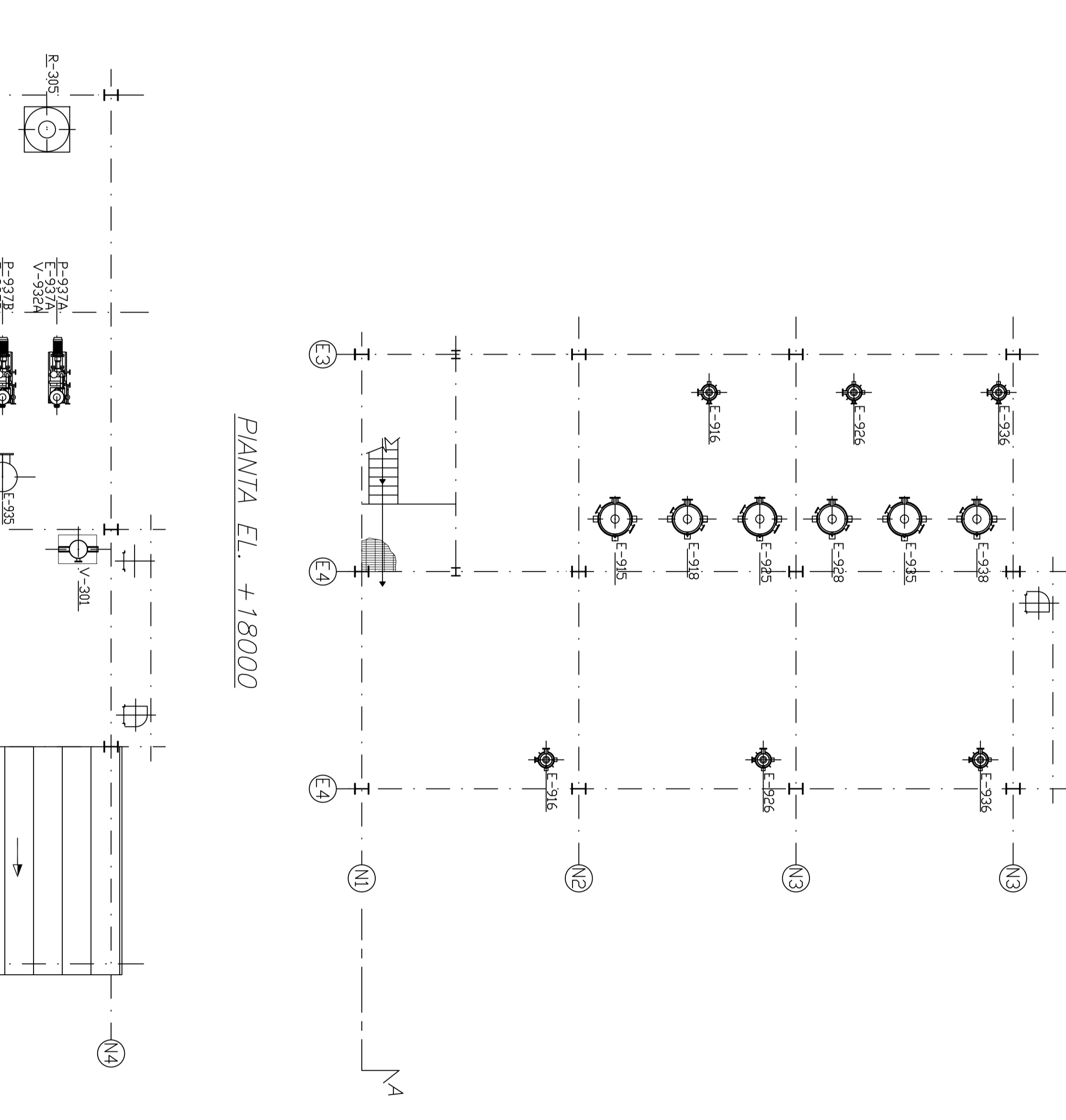
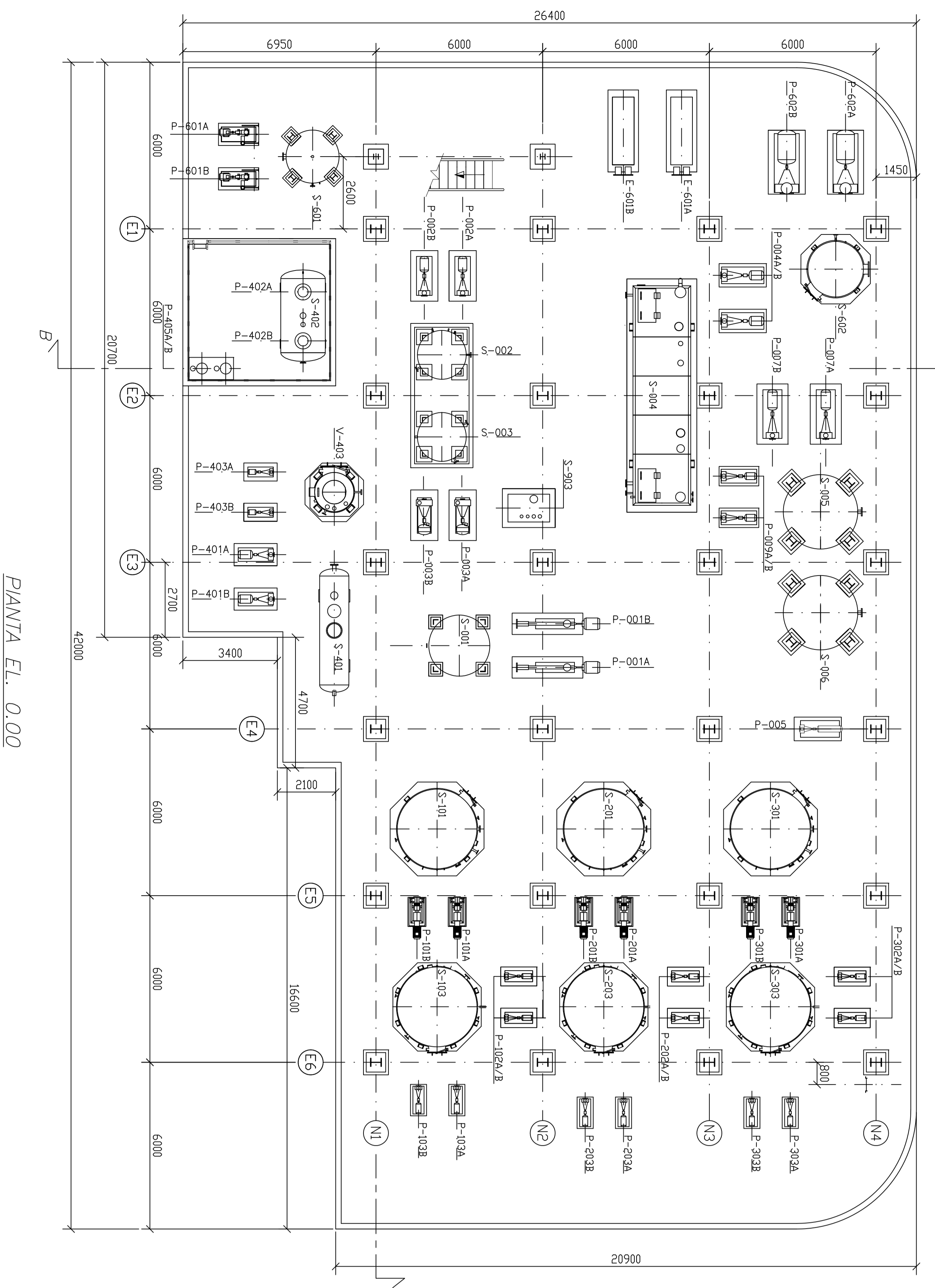


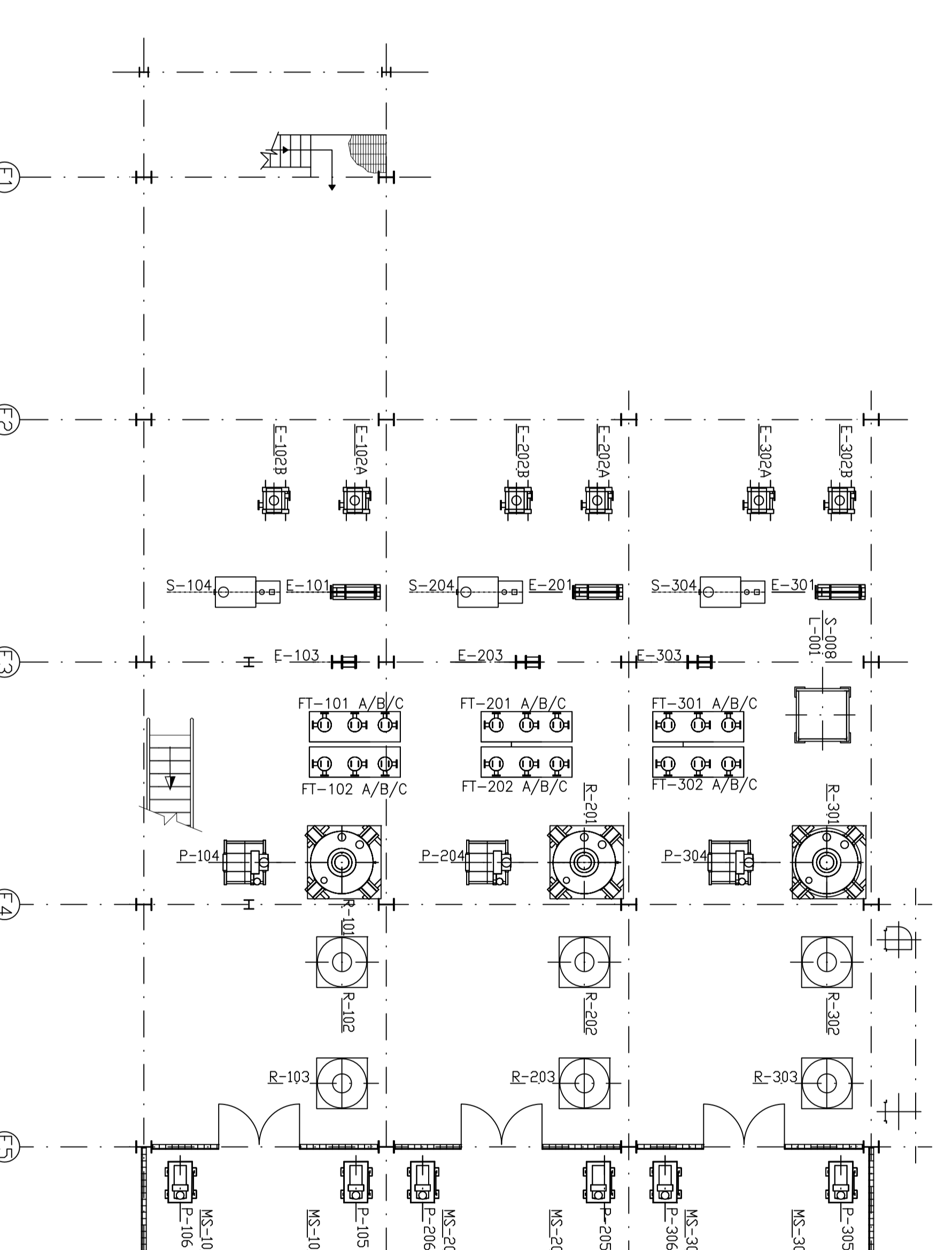
PIANTA EL. +4000



PIANTA EL. +18000



PIANTA EL. 0.00



PIANTA EL. +14000

ITEM NBR	DESCRIPTION	ITEM NBR	DESCRIPTION
S-301	DEGUMMING - EQUIPMENT COMMON	S-301	DEGUMMING - EQUIPMENT COMMON
P-601A/B	ACID GASK TANK	P-601A/B	ACID GASK TANK
P-401A/B	ACID GASK PUMPS x 2	P-401A/B	ACID GASK PUMPS x 2
S-304	FAI-T-604	FT-300A/B/C	FT-300A/B/C FT-300A/B/C
P-010A/B	RECOVERED OIL PUMPS x 2	P-010A/B	RECOVERED OIL PUMPS x 2
P-020A/B	RECOVERED WATER PUMPS x 2	P-020A/B	RECOVERED WATER PUMPS x 2
S-302	ACID TANK	E-301	OIL/OIL HEAT EXCHANGER
P-020A/B	ACID PUMPS x 2	E-302A/B	OIL HEATER x 2
S-303	CASTIC SODA TANK	R-301 / R-305	ACID REACTOR
P-030A/B	CASTIC SODA PUMPS x 2	R-301	CASTIC SODA PUMPS x 2
P-030A/B	CASTIC SODA PUMPS x 2	R-302	CASTIC SODA PUMPS x 2
P-030A/B	CASTIC SODA PUMPS x 2	R-303	CASTIC SODA PUMPS x 2
P-030A/B	CASTIC SODA PUMPS x 2	R-304	CASTIC SODA PUMPS x 2
P-030A/B	CASTIC SODA PUMPS x 2	R-305	CASTIC SODA PUMPS x 2
P-030A/B	CASTIC SODA PUMPS x 2	R-306	CASTIC SODA PUMPS x 2
P-030A/B	CASTIC SODA PUMPS x 2	R-307	CASTIC SODA PUMPS x 2
P-030A/B	CASTIC SODA PUMPS x 2	R-308	CASTIC SODA PUMPS x 2
P-030A/B	CASTIC SODA PUMPS x 2	R-309	CASTIC SODA PUMPS x 2
P-030A/B	CASTIC SODA PUMPS x 2	R-310	CASTIC SODA PUMPS x 2
P-030A/B	CASTIC SODA PUMPS x 2	R-311	CASTIC SODA PUMPS x 2
P-030A/B	CASTIC SODA PUMPS x 2	R-312	CASTIC SODA PUMPS x 2
P-030A/B	CASTIC SODA PUMPS x 2	R-313	CASTIC SODA PUMPS x 2
P-030A/B	CASTIC SODA PUMPS x 2	R-314	CASTIC SODA PUMPS x 2
P-030A/B	CASTIC SODA PUMPS x 2	R-315	CASTIC SODA PUMPS x 2
P-030A/B	CASTIC SODA PUMPS x 2	R-316	CASTIC SODA PUMPS x 2
P-030A/B	CASTIC SODA PUMPS x 2	R-317	CASTIC SODA PUMPS x 2
P-030A/B	CASTIC SODA PUMPS x 2	R-318	CASTIC SODA PUMPS x 2
P-030A/B	CASTIC SODA PUMPS x 2	R-319	CASTIC SODA PUMPS x 2
P-030A/B	CASTIC SODA PUMPS x 2	R-320	CASTIC SODA PUMPS x 2
P-030A/B	CASTIC SODA PUMPS x 2	R-321	CASTIC SODA PUMPS x 2
P-030A/B	CASTIC SODA PUMPS x 2	R-322	CASTIC SODA PUMPS x 2
P-030A/B	CASTIC SODA PUMPS x 2	R-323	CASTIC SODA PUMPS x 2
P-030A/B	CASTIC SODA PUMPS x 2	R-324	CASTIC SODA PUMPS x 2
P-030A/B	CASTIC SODA PUMPS x 2	R-325	CASTIC SODA PUMPS x 2
P-030A/B	CASTIC SODA PUMPS x 2	R-326	CASTIC SODA PUMPS x 2
P-030A/B	CASTIC SODA PUMPS x 2	R-327	CASTIC SODA PUMPS x 2
P-030A/B	CASTIC SODA PUMPS x 2	R-328	CASTIC SODA PUMPS x 2
P-030A/B	CASTIC SODA PUMPS x 2	R-329	CASTIC SODA PUMPS x 2
P-030A/B	CASTIC SODA PUMPS x 2	R-330	CASTIC SODA PUMPS x 2
P-030A/B	CASTIC SODA PUMPS x 2	R-331	CASTIC SODA PUMPS x 2
P-030A/B	CASTIC SODA PUMPS x 2	R-332	CASTIC SODA PUMPS x 2
P-030A/B	CASTIC SODA PUMPS x 2	R-333	CASTIC SODA PUMPS x 2
P-030A/B	CASTIC SODA PUMPS x 2	R-334	CASTIC SODA PUMPS x 2
P-030A/B	CASTIC SODA PUMPS x 2	R-335	CASTIC SODA PUMPS x 2
P-030A/B	CASTIC SODA PUMPS x 2	R-336	CASTIC SODA PUMPS x 2
P-030A/B	CASTIC SODA PUMPS x 2	R-337	CASTIC SODA PUMPS x 2
P-030A/B	CASTIC SODA PUMPS x 2	R-338	CASTIC SODA PUMPS x 2
P-030A/B	CASTIC SODA PUMPS x 2	R-339	CASTIC SODA PUMPS x 2
P-030A/B	CASTIC SODA PUMPS x 2	R-340	CASTIC SODA PUMPS x 2
P-030A/B	CASTIC SODA PUMPS x 2	R-341	CASTIC SODA PUMPS x 2
P-030A/B	CASTIC SODA PUMPS x 2	R-342	CASTIC SODA PUMPS x 2
P-030A/B	CASTIC SODA PUMPS x 2	R-343	CASTIC SODA PUMPS x 2
P-030A/B	CASTIC SODA PUMPS x 2	R-344	CASTIC SODA PUMPS x 2
P-030A/B	CASTIC SODA PUMPS x 2	R-345	CASTIC SODA PUMPS x 2
P-030A/B	CASTIC SODA PUMPS x 2	R-346	CASTIC SODA PUMPS x 2
P-030A/B	CASTIC SODA PUMPS x 2	R-347	CASTIC SODA PUMPS x 2
P-030A/B	CASTIC SODA PUMPS x 2	R-348	CASTIC SODA PUMPS x 2
P-030A/B	CASTIC SODA PUMPS x 2	R-349	CASTIC SODA PUMPS x 2
P-030A/B	CASTIC SODA PUMPS x 2	R-350	CASTIC SODA PUMPS x 2
P-030A/B	CASTIC SODA PUMPS x 2	R-351	CASTIC SODA PUMPS x 2
P-030A/B	CASTIC SODA PUMPS x 2	R-352	CASTIC SODA PUMPS x 2
P-030A/B	CASTIC SODA PUMPS x 2	R-353	CASTIC SODA PUMPS x 2
P-030A/B	CASTIC SODA PUMPS x 2	R-354	CASTIC SODA PUMPS x 2
P-030A/B	CASTIC SODA PUMPS x 2	R-355	CASTIC SODA PUMPS x 2
P-030A/B	CASTIC SODA PUMPS x 2	R-356	CASTIC SODA PUMPS x 2
P-030A/B	CASTIC SODA PUMPS x 2	R-357	CASTIC SODA PUMPS x 2
P-030A/B	CASTIC SODA PUMPS x 2	R-358	CASTIC SODA PUMPS x 2
P-030A/B	CASTIC SODA PUMPS x 2	R-359	CASTIC SODA PUMPS x 2
P-030A/B	CASTIC SODA PUMPS x 2	R-360	CASTIC SODA PUMPS x 2
P-030A/B	CASTIC SODA PUMPS x 2	R-361	CASTIC SODA PUMPS x 2
P-030A/B	CASTIC SODA PUMPS x 2	R-362	CASTIC SODA PUMPS x 2
P-030A/B	CASTIC SODA PUMPS x 2	R-363	CASTIC SODA PUMPS x 2
P-030A/B	CASTIC SODA PUMPS x 2	R-364	CASTIC SODA PUMPS x 2
P-030A/B	CASTIC SODA PUMPS x 2	R-365	CASTIC SODA PUMPS x 2
P-030A/B	CASTIC SODA PUMPS x 2	R-366	CASTIC SODA PUMPS x 2
P-030A/B	CASTIC SODA PUMPS x 2	R-367	CASTIC SODA PUMPS x 2
P-030A/B	CASTIC SODA PUMPS x 2	R-368	CASTIC SODA PUMPS x 2
P-030A/B	CASTIC SODA PUMPS x 2	R-369	CASTIC SODA PUMPS x 2
P-030A/B	CASTIC SODA PUMPS x 2	R-370	CASTIC SODA PUMPS x 2
P-030A/B	CASTIC SODA PUMPS x 2	R-371	CASTIC SODA PUMPS x 2
P-030A/B	CASTIC SODA PUMPS x 2	R-372	CASTIC SODA PUMPS x 2
P-030A/B	CASTIC SODA PUMPS x 2	R-373	CASTIC SODA PUMPS x 2
P-030A/B	CASTIC SODA PUMPS x 2	R-374	CASTIC SODA PUMPS x 2
P-030A/B	CASTIC SODA PUMPS x 2	R-375	CASTIC SODA PUMPS x 2
P-030A/B	CASTIC SODA PUMPS x 2	R-376	CASTIC SODA PUMPS x 2
P-030A/B	CASTIC SODA PUMPS x 2	R-377	CASTIC SODA PUMPS x 2
P-030A/B	CASTIC SODA PUMPS x 2	R-378	CASTIC SODA PUMPS x 2
P-030A/B	CASTIC SODA PUMPS x 2	R-379	CASTIC SODA PUMPS x 2
P-030A/B	CASTIC SODA PUMPS x 2	R-380	CASTIC SODA PUMPS x 2
P-030A/B	CASTIC SODA PUMPS x 2	R-381	CASTIC SODA PUMPS x 2
P-030A/B	CASTIC SODA PUMPS x 2	R-382	CASTIC SODA PUMPS x 2
P-030A/B	CASTIC SODA PUMPS x 2	R-383	CASTIC SODA PUMPS x 2
P-030A/B	CASTIC SODA PUMPS x 2	R-384	CASTIC SODA PUMPS x 2
P-030A/B	CASTIC SODA PUMPS x 2	R-385	CASTIC SODA PUMPS x 2
P-030A/B	CASTIC SODA PUMPS x 2	R-386	CASTIC SODA PUMPS x 2
P-030A/B	CASTIC SODA PUMPS x 2	R-387	CASTIC SODA PUMPS x 2
P-030A/B	CASTIC SODA PUMPS x 2	R-388	CASTIC SODA PUMPS x 2
P-030A/B	CASTIC SODA PUMPS x 2	R-389	CASTIC SODA PUMPS x 2
P-030A/B	CASTIC SODA PUMPS x 2	R-390	CASTIC SODA PUMPS x 2
P-030A/B	CASTIC SODA PUMPS x 2	R-391	CASTIC SODA PUMPS x 2
P-030A/B	CASTIC SODA PUMPS x 2	R-392	CASTIC SODA PUMPS x 2
P-030A/B	CASTIC SODA PUMPS x 2	R-393	CASTIC SODA PUMPS x 2
P-030A/B	CASTIC SODA PUMPS x 2	R-394	CASTIC SODA PUMPS x 2
P-030A/B	CASTIC SODA PUMPS x 2	R-395	CASTIC SODA PUMPS x 2
P-030A/B	CASTIC SODA PUMPS x 2	R-396	CASTIC SODA PUMPS x 2
P-030A/B	CASTIC SODA PUMPS x 2	R-397	CASTIC SODA PUMPS x 2
P-030A/B	CASTIC SODA PUMPS x 2	R-398	CASTIC SODA PUMPS x 2
P-030A/B	CASTIC SODA PUMPS x 2	R-399	CASTIC SODA PUMPS x 2
P-030A/B	CASTIC SODA PUMPS x 2	R-400	CASTIC SODA PUMPS x 2

NOTE GENERALI

1) SE NON DIVERSAMENTE SPECIFICATO TUTTE LE DIMENSIONI SONO ESPRESSE IN "mm"

2) COMPARTIMENTI ALTO DENTRO IN CALCESTRUZZO, BASSO DENTRO IN CALCESTRUZZO CON NERVATURE

3) PER L'INDICAZIONE DELLE SEZIONI VEDI IL DIS. PRECORRIBRE-CH-001 GENERAL PILOT PLAN

DOCUMENTI DI RIFERIMENTO

PRECORRIBRE-CH-001 GENERAL PILOT PLAN

PRECORRIBRE-CH-002 FIG. 2 DI 2 PROGETTO ARCHITETTONICO IMPIANTO PIANTE E SEZIONI

LEGENDA

INDICAZIONE DI IMPIANTO

PIANTA CHIAVE

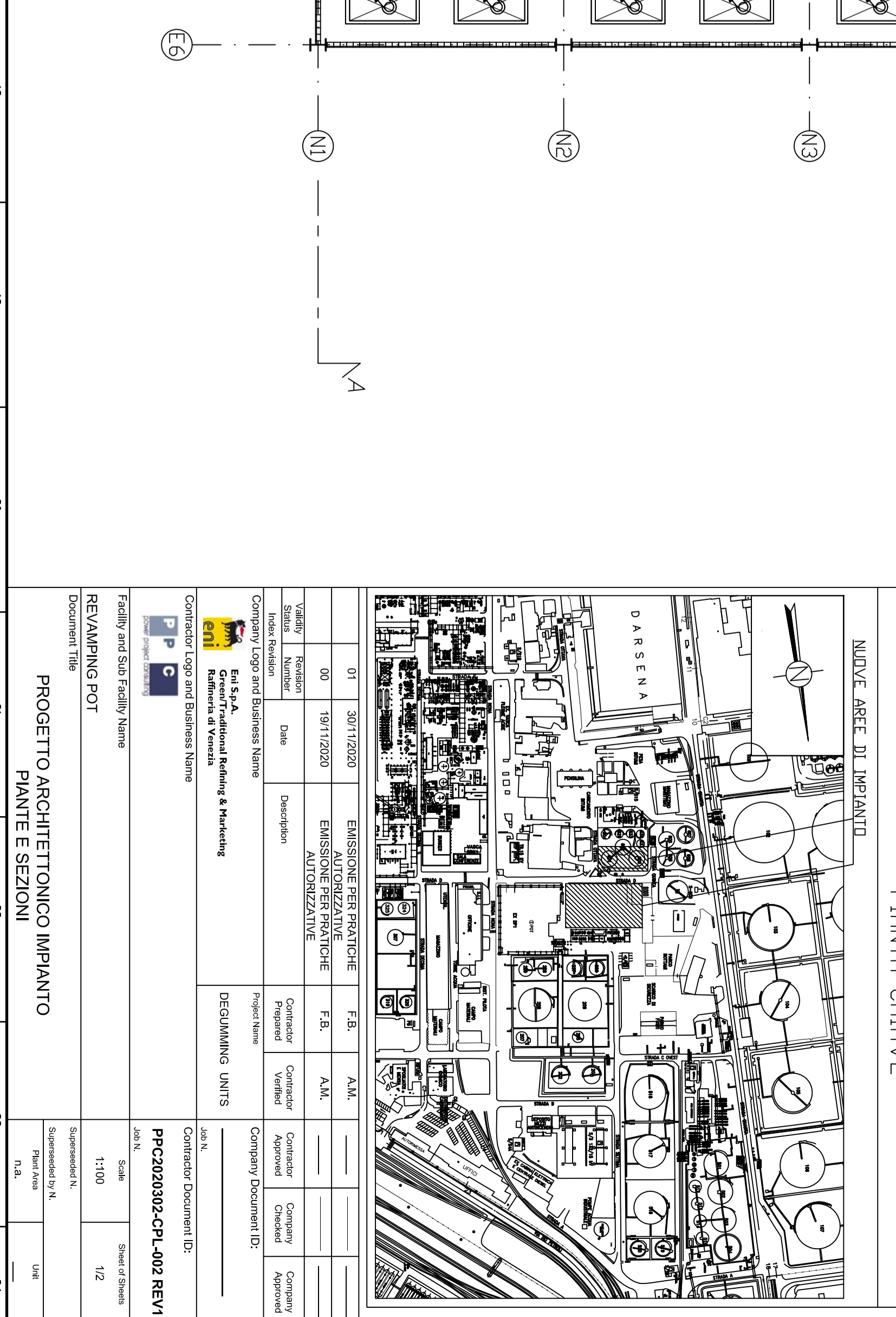


Table with project details including title 'PROGETTO ACQUISTIVO IMPIANTO PIANTE E SEZIONI', scale '1:1000', and drawing number '10'.