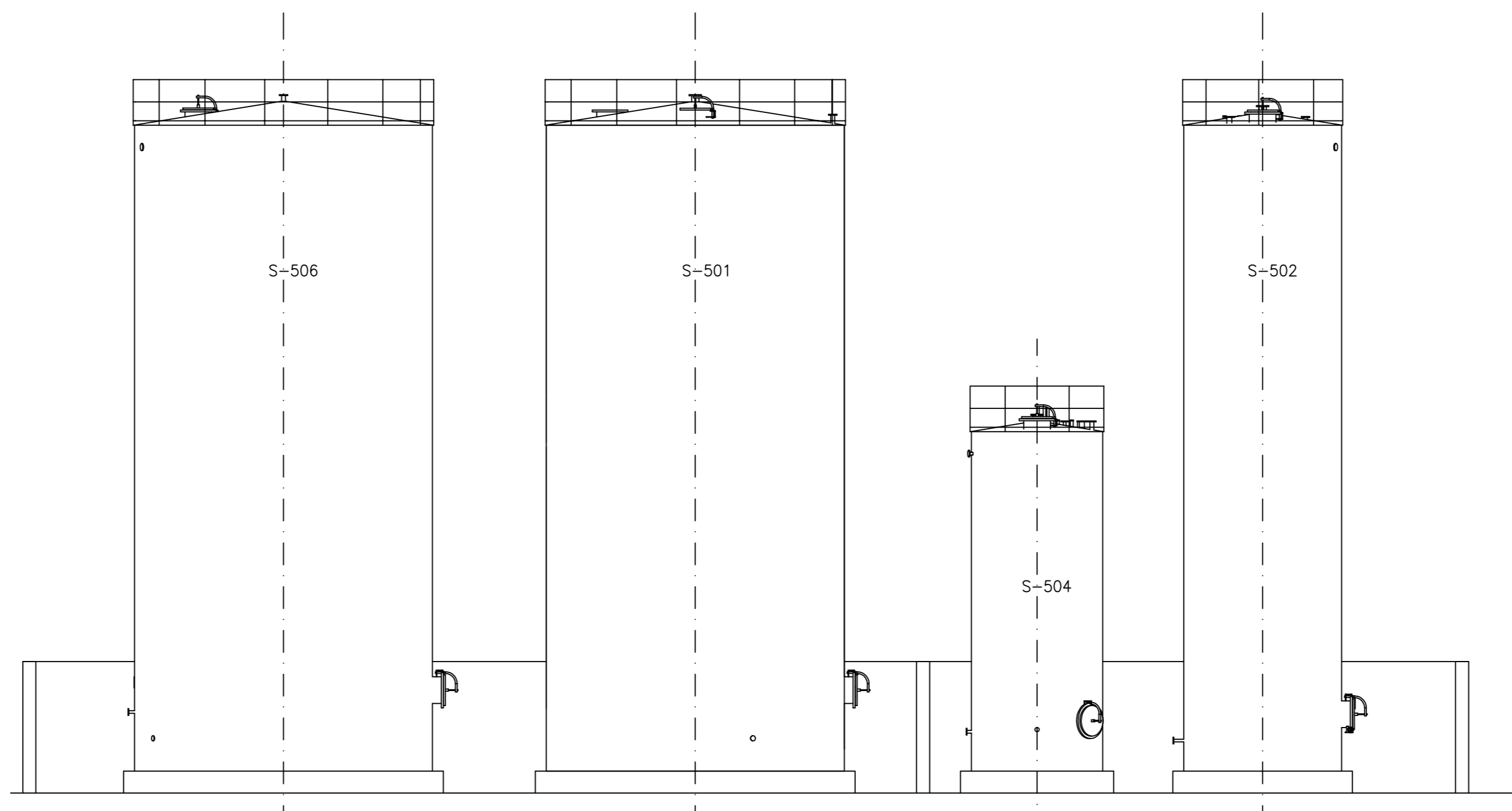
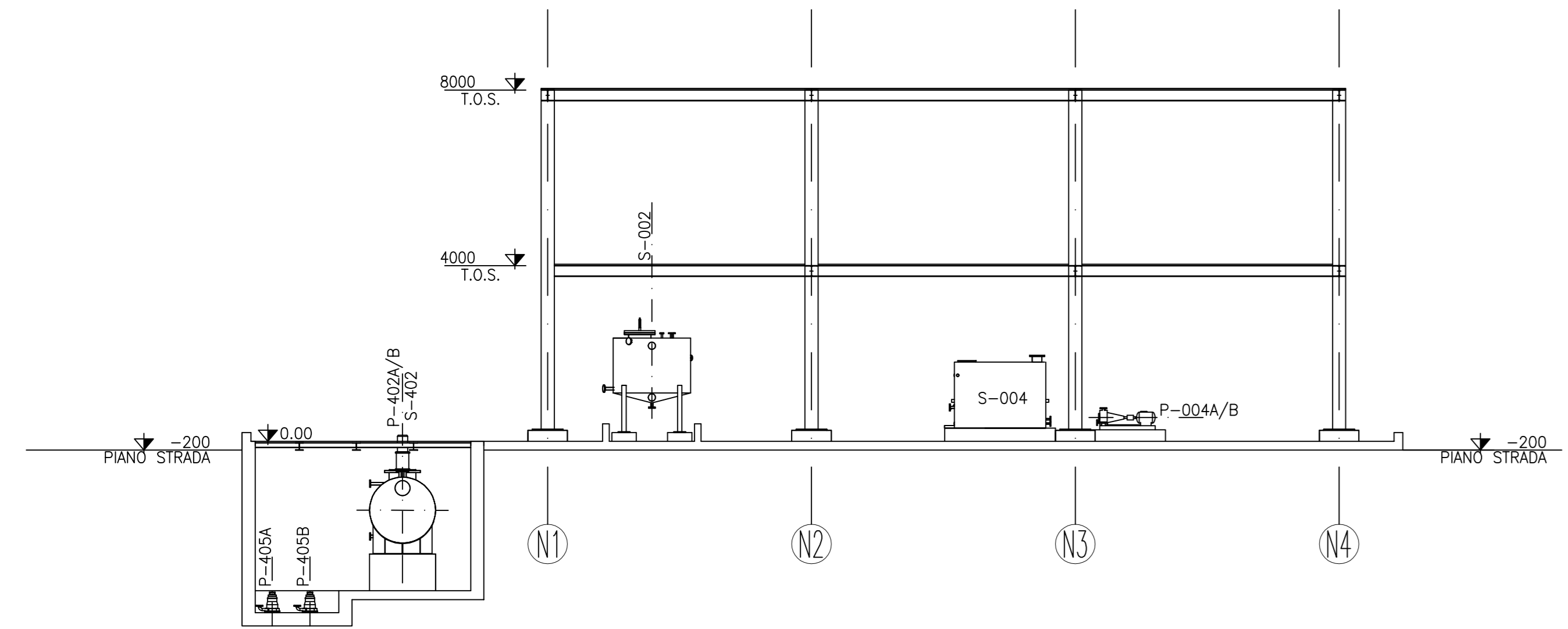


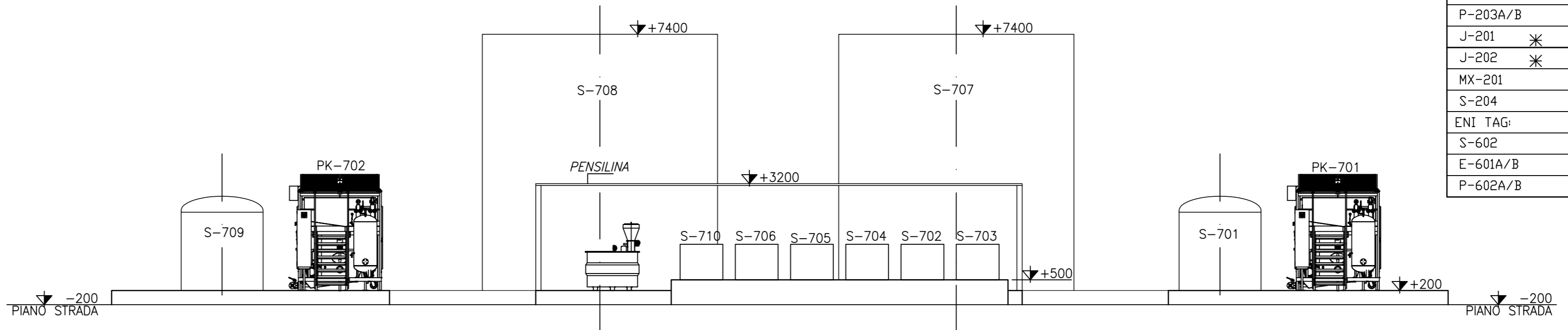
SEZIONE E-E
TANK FARM



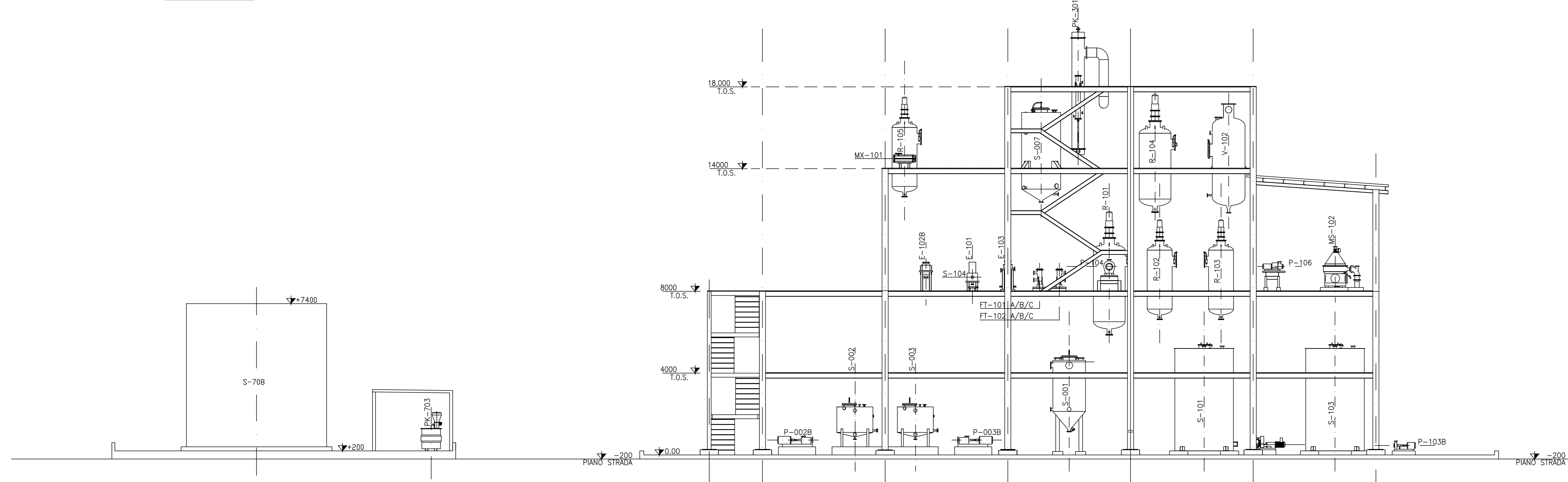
SEZIONE D-D
TANK FARM



SEZIONE B-B
DEGUMMING



VISTA C-C
WASTE WATER TREATMENT



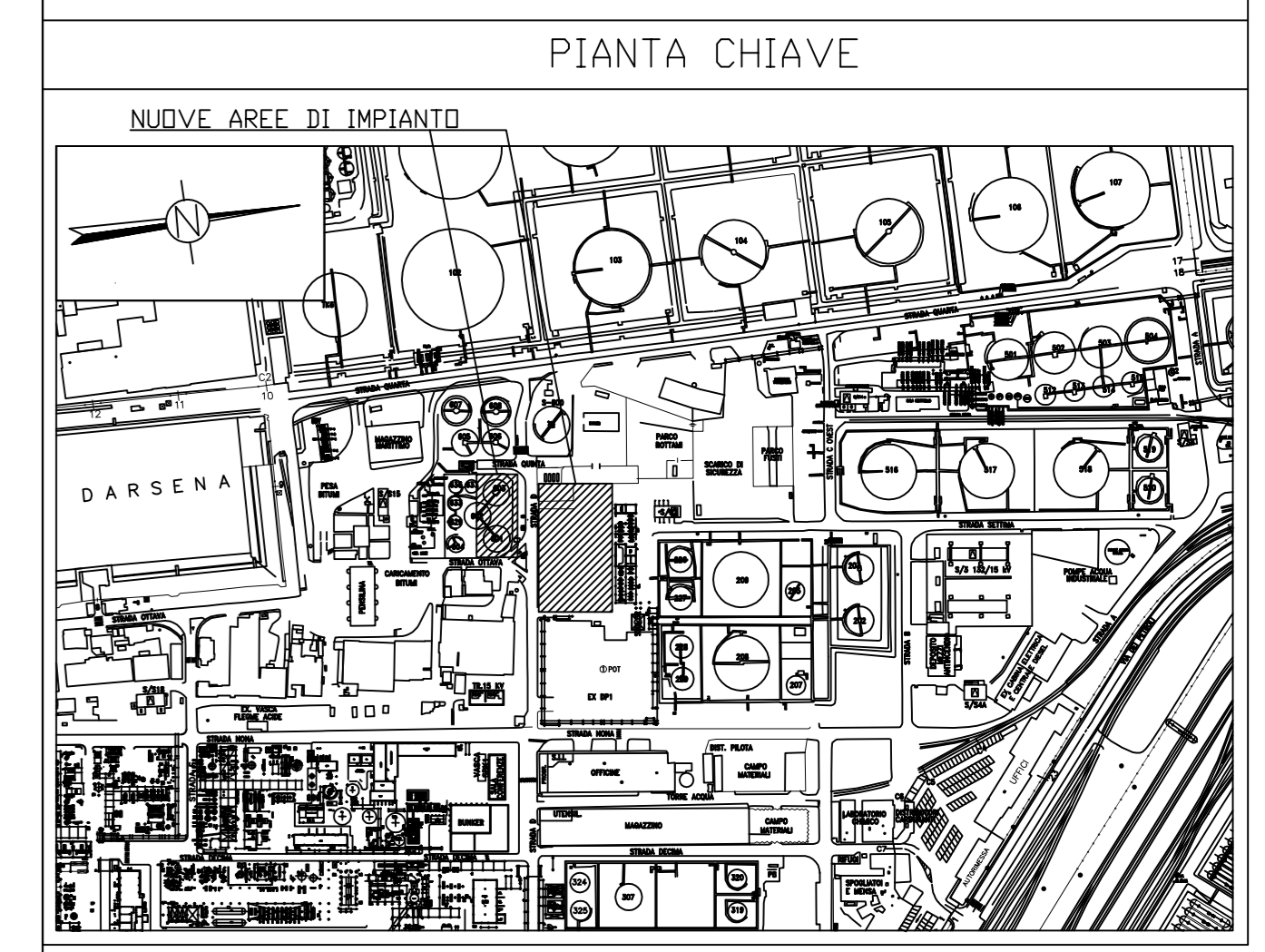
SEZIONE A-A
DEGUMMING

| ITEM NBR | ITEM DESCRIPTION | ITEM NBR | ITEM DESCRIPTION |
|--|------------------------------------|----------------------------|------------------------------------|
| DEGUMMING | | | |
| S-001 | ACID GUMS TANK | S-601 | CIP DETERGENT TANK |
| P-001A/B | ACID GUMS PUMPS(S) x 2 | P-601A/B | CIP CIRCULATING PUMP |
| S-004 | FAT-TRAP | LINEA N.3 DEGUMMING | |
| P-004A/B | RECOVERED OIL PUMPS(S) x 2 | FT-301A/B/C FT-302A/B/C | AUTOMATIC STRAINERS(S) x 6 |
| P-009A/B | RECOVERED WATER PUMPS(S) x 2 | S-301 | OIL FEED TANK |
| S-002 | CITRIC ACID TANK | P-301A/B | OIL FEED PUMPS(S) x 2 |
| P-002A/B | CITRIC ACID PUMPS(S) x 2 | E-301 | OIL/OIL HEAT EXCHANGER |
| S-003 | CAUSTIC SODA TANK | E-302A/B | OIL HEATERS(S) x 2 |
| P-003A/B | CAUSTIC SODA PUMPS(S) x 2 | P-304 | ACID MIXER |
| S-007 | HOT WATER TANK | R-301 / R-305 | ACID REACTOR |
| P-007A/B | HOT WATER PUMPS(S) x 2 | P-305 | CAUSTIC SODA MIXER |
| L-001 + S-008 | SEPARATOR BOWL CLEANING STATION(S) | MS-300 | CENTRIFUGAL SEPARATOR |
| S-005 | ALKALINE DETERGENT TANK | P-306 | WATER WASH MIXER |
| S-006 | ACIDIC DETERGENT TANK | V-301 | WATER WASH REACTOR |
| P-005 | CIP CIRCULATING PUMP | MS-302 | WASHING CENTRIFUGAL SEPARATOR |
| S-401 | CONDENSATE TANK | E-303 | OIL HEATER |
| P-401A/B | CONDENSATE PUMPS(S) x 2 | V-302 | OIL DRYER |
| V-403 | ODOUR SCRUBBER | P-302A/B | DRYER DISCHARGE PUMPS(S) x 2 |
| P-403A/B | SCRUBBER CIRCULATING PUMPS(S) | S-303 | DEGUMMED OIL BUFFER TANK |
| S-402 | WASTE WATER COLLECTING TANK | P-303A/B | DEGUMMED OIL PUMPS(S) x 2 |
| P-402A/B | WASTE WATER PUMPS(S) x 2 | J-301 | ACID PRE MIXER |
| P-405A/B | Basin Drain Pumps(S) x 2 | J-302 | CAUSTIC SODA PRE-MIXER |
| LINEA N.1 DEGUMMING | | | |
| FT-101A/B/C FT-102A/B/C | AUTOMATIC STRAINERS(S) x 6 | MX-301 | STATIC MIXER |
| S-101 | OIL FEED TANK | S-304 | DYNAMIC DECANTER |
| P-101A/B | OIL FEED PUMPS(S) x 2 | ENI TAG: TANK FARM | |
| E-101 | OIL/OIL HEAT EXCHANGER | S-504 | CAUSTIC SODA STORAGE TANK |
| E-102A/B | OIL HEATERS(S) x 2 | P-505A/B | CAUSTIC SODA TRANSFER PUMPS(S) |
| P-104 | ACID MIXER | S-502 | CITRIC ACID STORAGE TANK |
| R-101 / R-105 | ACID REACTOR | P-503A/B | CITRIC ACID TRANSFER PUMPS(S) |
| P-105 | CAUSTIC SODA MIXER | S-501 | ACID GUMS STORAGE TANK |
| MS-101 | CENTRIFUGAL SEPARATOR | P-501A/B | ACID GUMS TRUCK LOADING PUMPS(S) |
| P-106 | WATER WASH MIXER | S-506 | WASTE WATER STORAGE TANK |
| V-101 | WATER WASH REACTOR | P-506A/B | WASTE WATER TRANSFER PUMPS(S) |
| MS-102 | WASHING CENTRIFUGAL SEPARATOR | ENI TAG: W/W/T | |
| E-103 | OIL HEATER | E-701 | HEAT EXCHANGER |
| V-102 | OIL DRYER | J-701 | STATIC MIXER |
| P-102A/B | DRYER DISCHARGE PUMPS(S) x 2 | S-701 | BUFFER TANK |
| S-103 | DEGUMMED OIL BUFFER TANK | P-701A/B | MBRR TRANSFER PUMP |
| P-103A/B | DEGUMMED OIL PUMPS(S) x 2 | J-702 | STATIC MIXER |
| J-101 | ACID PRE MIXER | S-702 | SODIUM HYDROXIDE TANK |
| J-102 | CAUSTIC SODA PRE-MIXER | P-702A/B | SODIUM HYDROXIDE DOSING PUMP |
| MX-101 | STATIC MIXER | S-703 | HYDROCHLORIC ACID TANK |
| S-104 | DYNAMIC DECANTER | P-703A/B | HYDROCHLORIC ACID DOSING PUMP |
| ENI TAG: LINEA N.2 DEGUMMING | | S-704 | ANTIFOG TANK |
| FT-201A/B/C FT-202A/B/C | AUTOMATIC STRAINERS(S) x 6 | P-704 | ANTIFOG DOSING PUMP |
| S-201 | OIL FEED TANK | S-705 | UREA TANK |
| P-201A/B | OIL FEED PUMPS(S) x 2 | P-705 | UREA DOSING PUMP |
| E-201 | OIL/OIL HEAT EXCHANGER | S-706 | PHOSPHORIC ACID TANK |
| E-202A/B | OIL HEATERS(S) x 2 | P-706 | PHOSPHORIC ACID DOSING PUMP |
| P-204 | ACID MIXER | S-707 | MBRR TANK |
| R-201 / R-205 | ACID REACTOR | S-708 | MBRR TANK |
| P-205 | CAUSTIC SODA MIXER | K-701A/B/C | MBRR BLOWER |
| MS-201 | CENTRIFUGAL SEPARATOR | PK-701 | DAF |
| P-206 | WATER WASH MIXER | PK-702 | SECONDO DAF |
| V-201 | WATER WASH REACTOR | S-709 | BUFFER TANK |
| MS-202 | WASHING CENTRIFUGAL SEPARATOR | P-709A/B | EFFLUENT TRANSFER PUMP |
| E-203 | OIL HEATER | PK-703 | POLYELECTROLYTE PREPARATION SYSTEM |
| V-202 | OIL DRYER | P-713A/B/C | POLYELECTROLYTE DOSING PUMP |
| P-202A/B | DRYER DISCHARGE PUMPS(S) x 2 | S-710 | FERRIC CHLORIDE TANK |
| S-203 | DEGUMMED OIL BUFFER TANK | P-710A/B/C | FERRIC CHLORIDE DOSING PUMP |
| P-203A/B | DEGUMMED OIL PUMPS(S) x 2 | ENI TAG: N.3 LINEA VACUUM | |
| J-201 | ACID PRE MIXER | S-903 | HOT VELL |
| J-202 | CAUSTIC SODA PRE-MIXER | E-915/918 E-925/928 | PRIMARY VACUUM CONDENSER |
| MX-201 | STATIC MIXER | E-916 E-926 E-936 | SECONDARY VACUUM CONDENSER |
| S-204 | DYNAMIC DECANTER | J-917A/B J-927A/B | DEAERATION EJECTOR |
| ENI TAG: CIRCUITI CHIUSI DI RAFFREDDAMENTO | | MS-914 MS-924 MS-934 | MOTIVE STEAM SEPARATOR |
| S-602 | BUFFER/EXPANSION VESSEL | P-917A/B P-927A/B | LIQUID RING VACUUM PUMP |
| E-601A/B | SEA WATER/WATER HEAT EXCHA(S) | E-917A/B E-927A/B | VACUUM PUMP HEAT EXCHANGER |
| P-602A/B | WATER CIRCULATION PUMPS(S) | V-912A/B V-922A/B | VACUUM PUMP VESSEL |

NOTE GENERALI
 1) SE NON DIVERSAMENTE SPECIFICATO TUTTE LE DIMENSIONI SONO ESPRESSE IN "mm"
 2) TUTTE LE QUOTE ALTIMETRICHE SONO RELATIVE E RIFERITE ALLA QUOTA 0,00 CORRISPONDENTE ALLO QUOTIA DI CALCESTIO DEL NUOVO IMPIANTO
 3) PER L'INDICAZIONE DELLE SEZIONI VEDI IL DIS. PPC2020302-CPL-001 GENERAL PLOT PLAN

DOCUMENTI DI RIFERIMENTO
 PPC2020302-CPL-001 GENERAL PLOT PLAN
 PPC2020302-CPL-002 FG.1 DI 2 PROGETTO ARCHITETTONICO IMPIANTO PIANTE E SEZIONI

LEGENDA
 NUOVE AREE DI IMPIANTO



| Validità | Revisione | Autore | Data | Descrizione | Contractor Approved | Contractor Verified | Company Checked | Company Approved |
|----------|------------|---------------------------------------|------|-------------|---------------------|---------------------|-----------------|------------------|
| 01 | 26/11/2020 | EMMISSIONE PER PRATICHE AUTORIZZATIVE | F.B. | A.M. | | | | |
| 00 | 19/11/2020 | EMMISSIONE PER PRATICHE AUTORIZZATIVE | F.B. | A.M. | | | | |

Contractor Logo and Business Name: **Eni S.p.A.**
 Eni S.p.A. Energy Services
 Via Salaria 1155, 00198 Roma, Italia

Contractor Logo and Business Name: **REVAMPING POT**
 REVAMPING POT
 Document Title: **PROGETTO ARCHITETTONICO IMPIANTO PIANTE E SEZIONI**

Scale: 1:100
 Sheet of Sheets: 22
 Supplemented by: **PPC2020302-CPL-002 REV1**
 Plant Area: **REVAMPING POT**
 Scale: **1:100**
 Sheet of Sheets: **22**