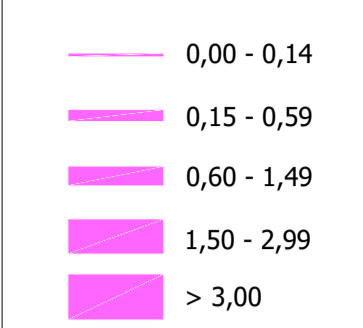


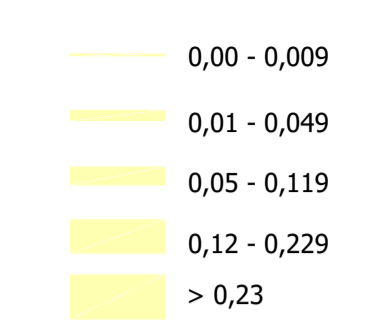
Legenda

Area d'intervento

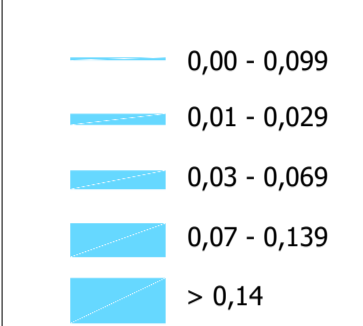
NO_x - Emissioni [t/km]



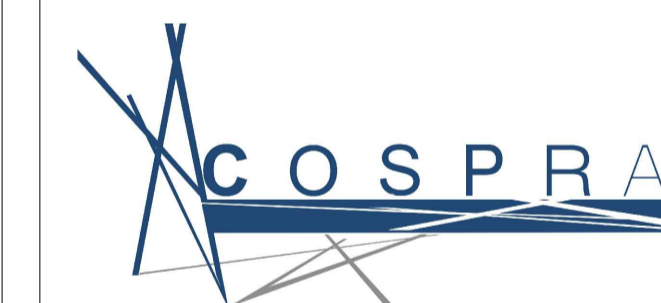
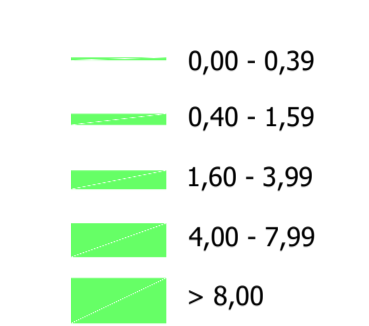
PM₁₀ - Emissioni [t/km]



PM_{2,5} - Emissioni [t/km]



CO - Emissioni [t/km]

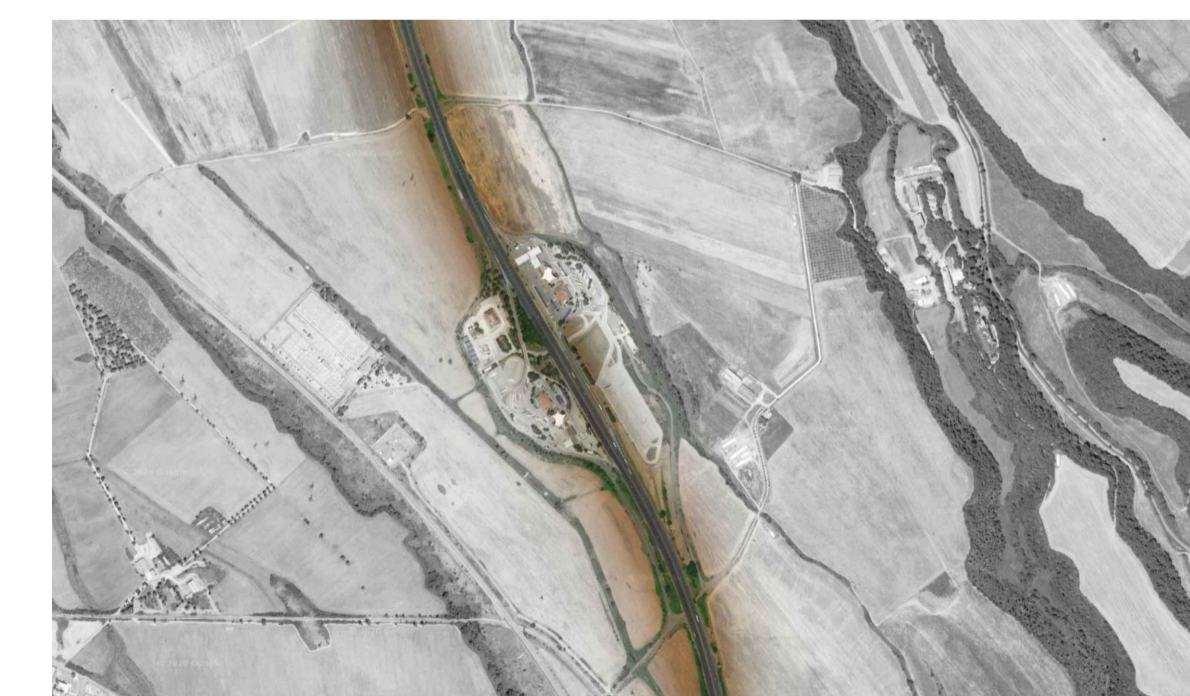


COS.P.R.A. S.r.l. unipersonale
 Via Stefano Jacini, 24 - 00191 Roma
 P.I. 01261061004 - C.F. 03918760582
 Pec 01261061004.roma@pec.ance.it
 E-mail: cospra@gmail.com

**Nuovo svincolo autostradale sulla bretella di collegamento
 tratto Fiano Romano - San Cesareo,
 in corrispondenza del comune di Galliciano**

PROGETTO DI FATTIBILITÀ TECNICA ED ECONOMICA

STUDIO PRELIMINARE AMBIENTALE



LO SCENARIO DI BASE - ATMOSFERA
 Planimetria delle emissioni stato attuale -
 NO_x, PM₁₀, PM_{2.5}, CO
 Data: Gennaio 2021

P2-ATM-CT-01-A

Scala 1:40.000

