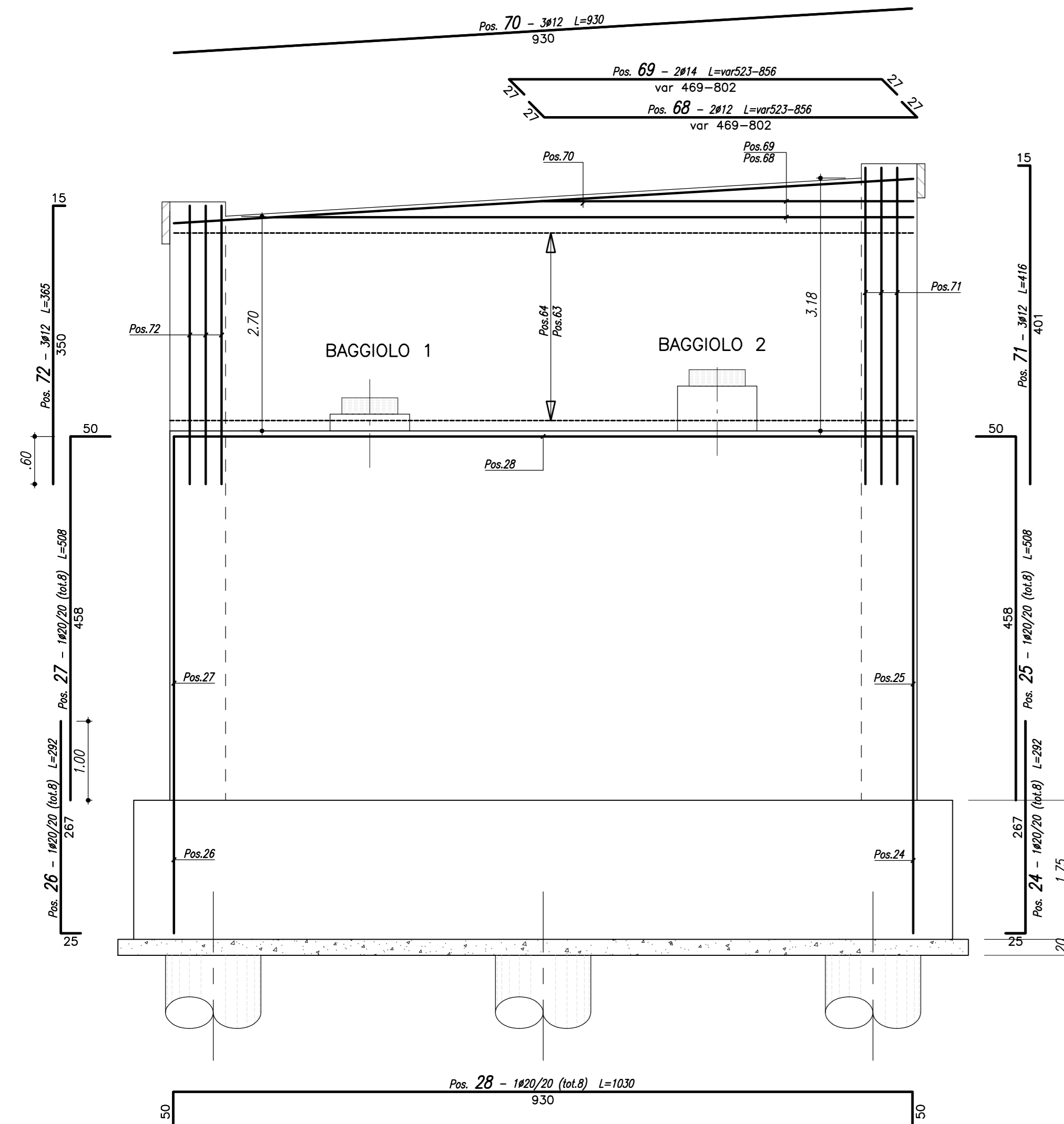


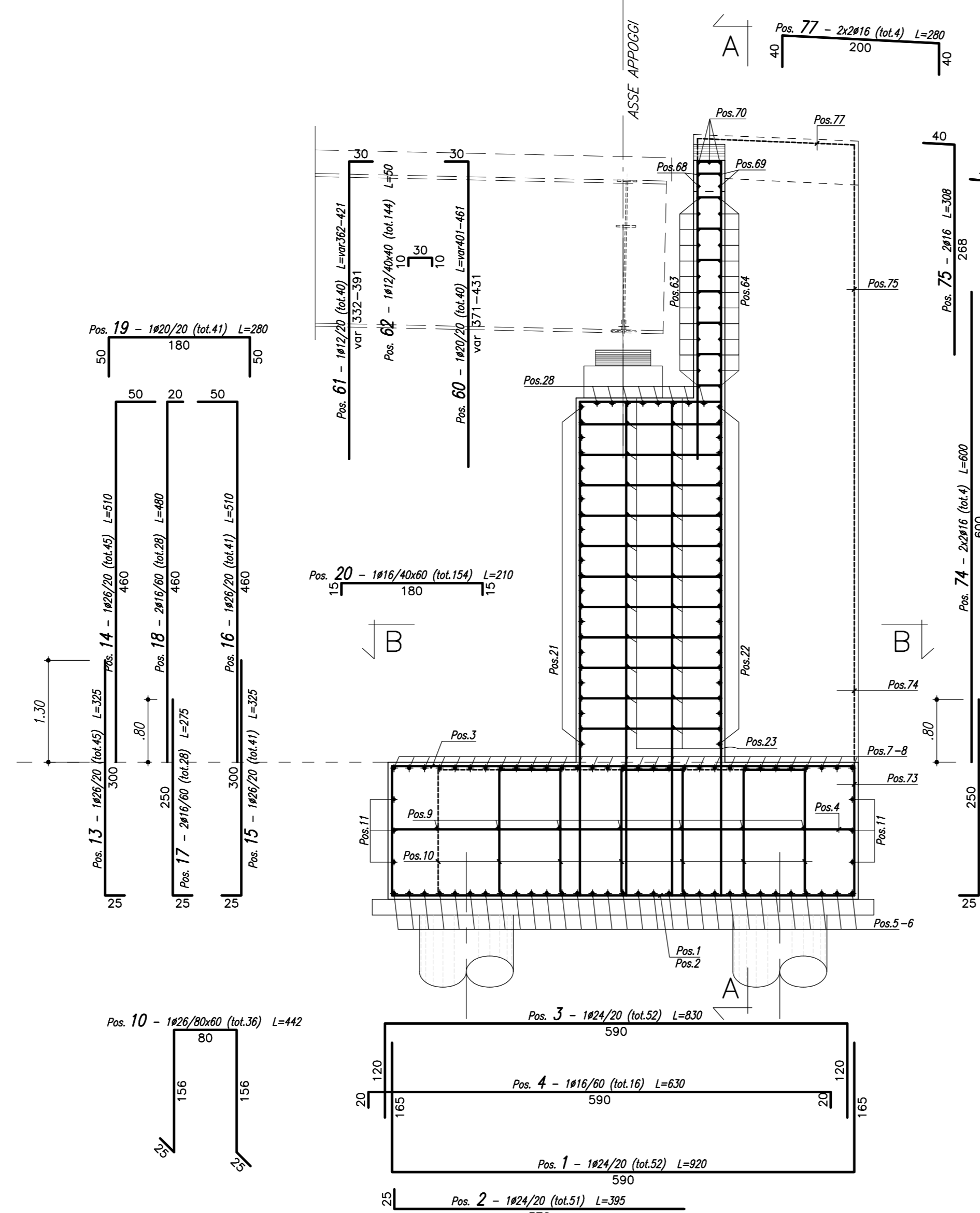
VISTA FRONTALE

SCALA 1:50



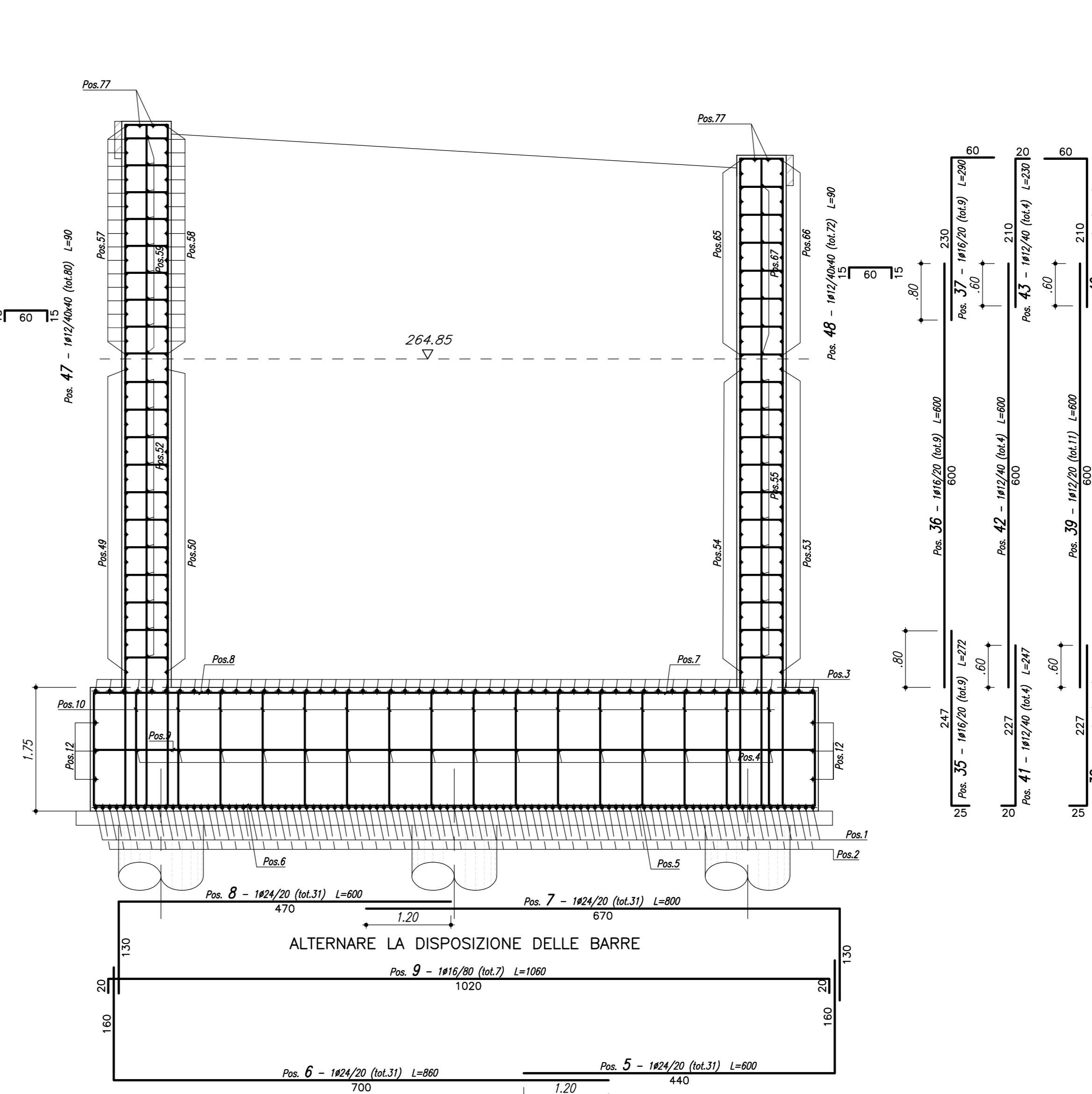
SEZIONE LONGITUDINALE

SCALA 1:50



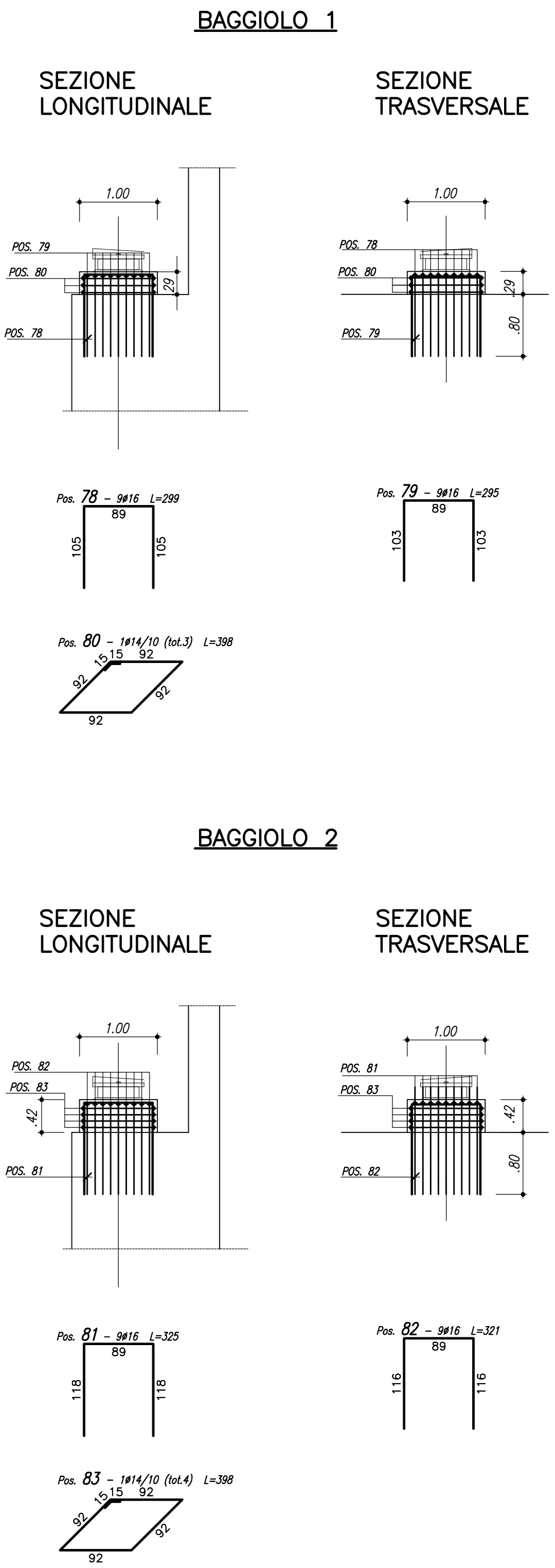
SEZIONE TRASVERSALE A-A

SCALA 1:50



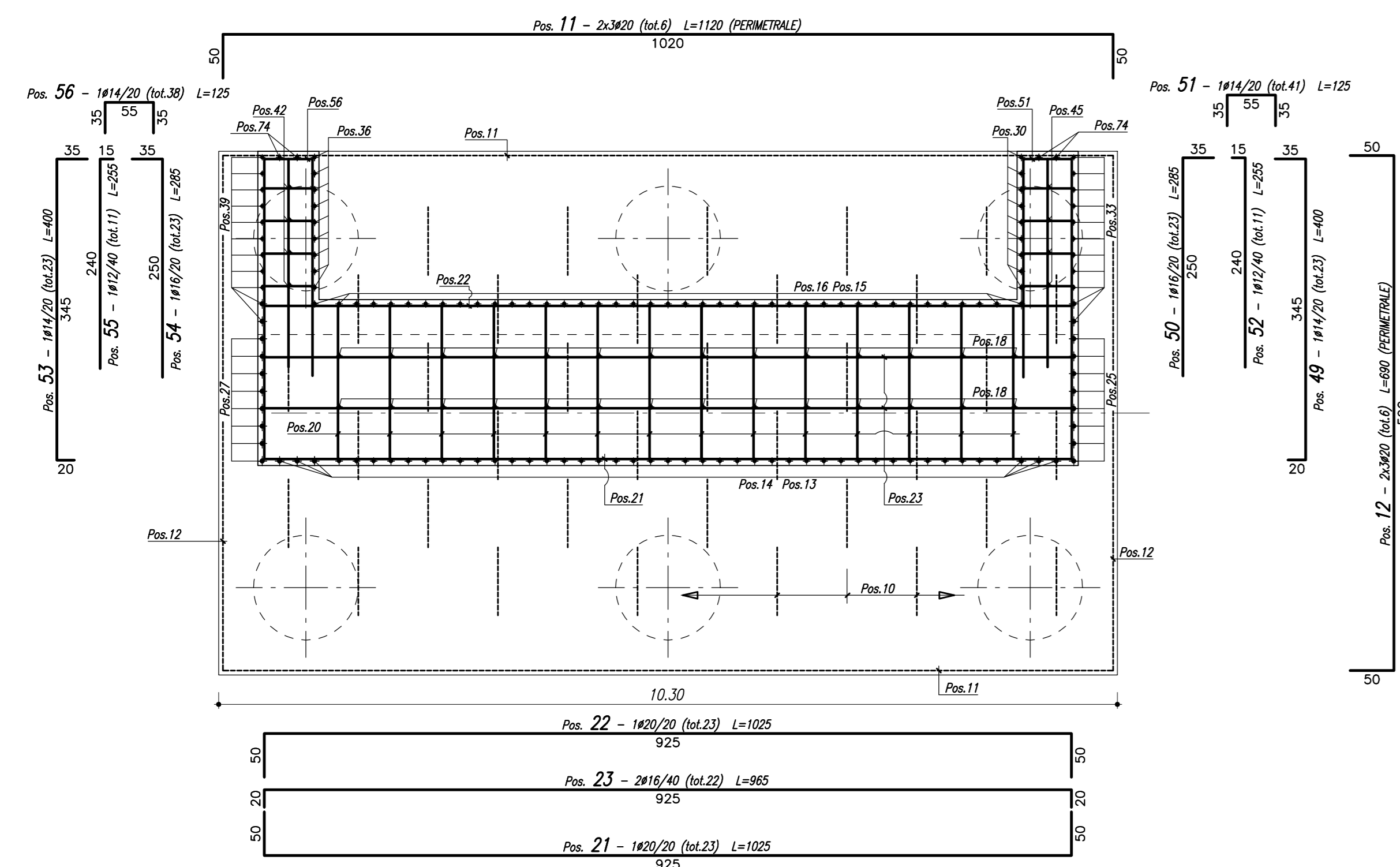
ARMATURA BAGGIOLI

SCALA 1:50



SEZIONE B-B

SCALA 1:50



DISTINTA FERRI DI FONDAZIONE

Sagoma	Pos.	φ (mm)	nb	A (cm)	B (cm)	C (cm)	L (m)	Ltot (m)	Note	
Sagoma 1	1	24	52	165	590	9.20	478.40			
	12	20	6	50	590	6.90	41.40			
	2	24	51	25	370	3.95	201.45			
	7	24	31	130	670	8.00	248.00			
	8	24	31	470	130	6.00	186.00			
	13	26	45	300	25	3.25	146.25			
	24	20	8	25	267	2.92	23.36			
	29	16	9	25	247	2.72	24.48			
	38	12	11	25	227	2.52	27.72			
	41	12	4	20	227	2.47	9.88			
Sagoma 2	73	16	4	25	250	2.75	11.00			
	3	24	52	120	590	8.30	431.60			
	4	16	16	20	590	6.30	100.60			
	9	16	7	20	1020	10.60	74.20			
	11	20	6	50	1020	11.20	67.20			
	28	20	8	50	930	10.30	82.40			
	5	24	31	160	440	6.00	185.94			
	6	24	31	700	160	8.60	266.54			
	15	26	41	300	25	3.25	133.25			
	17	16	28	25	250	2.75	77.00			
Sagoma 3	26	20	8	25	267	2.92	23.36			
	32	12	11	25	227	2.52	27.72			
	35	16	9	25	247	2.72	24.52			
	44	12	4	20	227	2.47	9.88			
	10	26	36	25	156	60	4.42	159.12		

φ (mm)	M/L (kg/m)	Ltot (m)	Mtot (kg)
12	0.888	75.20	66.8
16	1.578	312.00	492.4
20	2.466	237.72	586.3
24	3.551	199.73	709.1
26	4.168	438.62	1828.1
Tot.			10068.7

Massa totale acciaio: 10068.7 kg

DISTINTA FERRI DI ELEVAZIONE

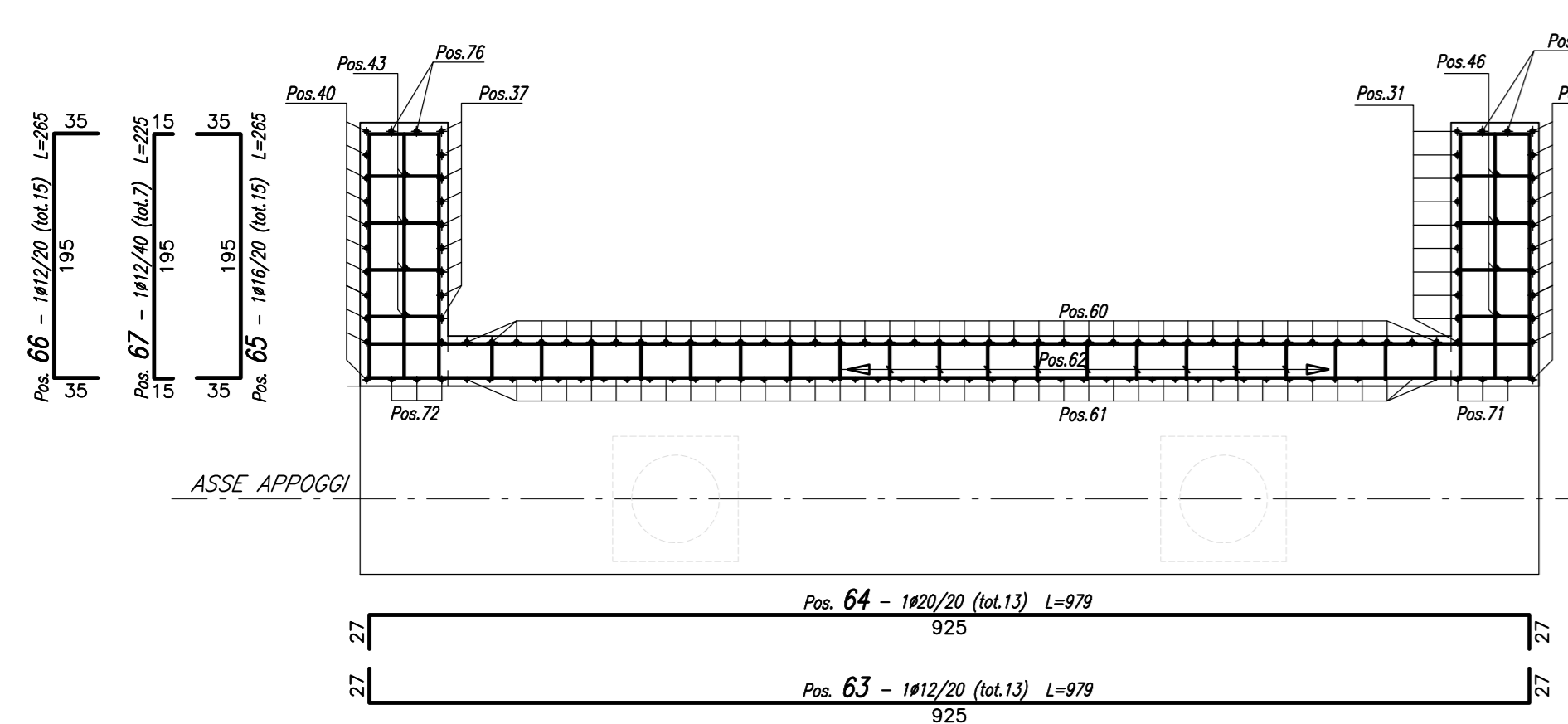
Sagoma	Pos.	φ (mm)	nb	A (cm)	B (cm)	C (cm)	L (m)	Ltot (m)	Note
Sagoma 1	14	26	45	460	50	5.10	229.50		
	18	16	28	460	20	4.80	134.40		
	27	20	8	458	50	5.08	40.64		
	34	12	11	260	60	3.20	35.20		
	37	16	9	230	60	2.90	26.10		
	43	12	4	210	20	2.30	9.20		
	46	12	4	260	20	2.80	11.20		
	52	12	11	15	240	2.55	28.05		
	54	16	23	35	250	2.85	65.55		
	72	12	3	350	15	3.65	10.96		
Sagoma 2	16	26	41	460	50	5.10	209.10		
	25	20	8	458	50	5.08	40.64		
	31	16	9	280	60	3.40	30.60		
	45	12	11	210	60	2.70	29.70		
	50	16	23	35	250	2.85	65.55		
	55	12	11	15	240	2.55	28.05		
	60	20	40	371/431	30	4.01/4.61	172.40		
	61	12	40	30	332/391	3.62/4.21	156.60		
	71	12	3	401	15	4.16	12.48		
	19	20	41	50	180	2.80	114.80		
Sagoma 3	20	16	154	15	180	2.10	323.40		
	22	20	23	50	925	10.25	235.76		
	23	16	22	20	925	9.65	212.31		
	47	12	80	15	60	0.90	72.00		
	48	12	72	15	60	0.90	64.80		
	51	14	41	35	55	1.25	51.41		
	56	14	38	35	55	1.25	47.65		
	58	16	18	35	195	2.65	47.70		
	59	12	9	15	195	2.25	20.25		
	62	12	144	10	30	0.50	72.00		
Sagoma 4	64	20	13	27	925	9.79	127.33		
	65	16	15	35	195	2.65	39.69		
	67	12	7	15	195	2.25	15.75		
	53	14	23	35	345	4.00	92.00		
	21	20	23	50	925	10.25	235.76		
	57	12	18	35	195	2.65	47.70		
	63	12	13	27	925	9.79	127.33		
	66	12	15	35	195	2.65	39.75		
	78	16	9	105	89	2.99	26.91		
	79	16	9	103	89	2.95	26.55		
Sagoma 5	81	16	9	118	89	3.25	29.25		
	82	16	9	116	89	3.21	28.89		
	49	14	23	35	345	4.00	92.00		
	30	16	9	600		6.00	54.00		
	33	12	11	600		6.00	66.00		
	36	16	9	600		6.00	54.00		
	39	12	11	600		6.00	66.00		
	42	12	4	600		6.00	24.00		
	45	12	4	600		6.00	24.00		
	70	12	3	930		9.30	27.90		
Sagoma 6	74	16	4	600		6.00	24.00		
	68	12	2	27	469/802	5.23/8.56	13.79		
	69	14	2	27	469/802	5.23/8.56	13.79		
	75	16	2	268	40	3.08	6.16		
	76	16	2	220	40	2.60	5.20		
	77	16	4	40	200	2.80	11.21		
	80	14	3	15	92	3.98	11.94		
	83	14	4	15	92	3.98	15.92		

φ (mm)	M/L (kg/m)	Ltot (m)	Mtot (kg)
12	0.888	1002.71	890.2
14	1.206	324.72	392.4
16	1.578	1211.49	1912.1
20	2.466	967.34	2385.6
26	4.168	438.60	1828.0
Tot.			7408.3

Massa totale acciaio: 7408.3 kg

VISTA DALL'ALTO

SCALA 1:50



- Posizioni
- POSIZIONE INIZIALE - 1
 - POSIZIONE FINALE - 83
 - POSIZIONI MANCANTI -

MATRICE DI REVISIONE

REV	DATA	DESCRIZIONE MODIFICA
0		
1		
2		
3		
4		
5		

N.B. LA TAVOLA SOSTITUISCE QUELLA RELATIVA AL CODICE [E] [C] [D] [I] [M] [O] [R] [S] [A] [L] [S] DEL PROGETTO ESECUTIVO

COLLEGAMENTO AUTOSTRADALE
DALMINE - COMO - VARESE - VALICO DEL GAGGIOLO E OPERE AD ESSO CONNESSE
CODICE C.U.P. F118400027807
TRATTE B1, B2, C, D, TRV13+14, GREENWAY
AS BUILT
TRATTA B1 - SVINCOLO DI LOMAZZO (da Pk - 0+850 a Pk +1+800)
OPERE D'ARTE MINORI
CAVALCAVIA
SVINCOLO LOMAZZO - CAVALCAVIA RAMPA G
ARMATURA SPALLA "B"

IMPRESA: RAGGRUPPAMENTO TEMPORANEO IMPRESE: STRABAG A.G. - GLF Grandi Lavori Fincantieri S.p.A. - Malturo S.p.A.

PROGETTISTA: 3TI ITALIA S.p.A.

CONCESSIONARIO: STRABAG

REDAZIONE: D. Lillo

VERIFICATO: Fasoli

APPROVATO: Posanti