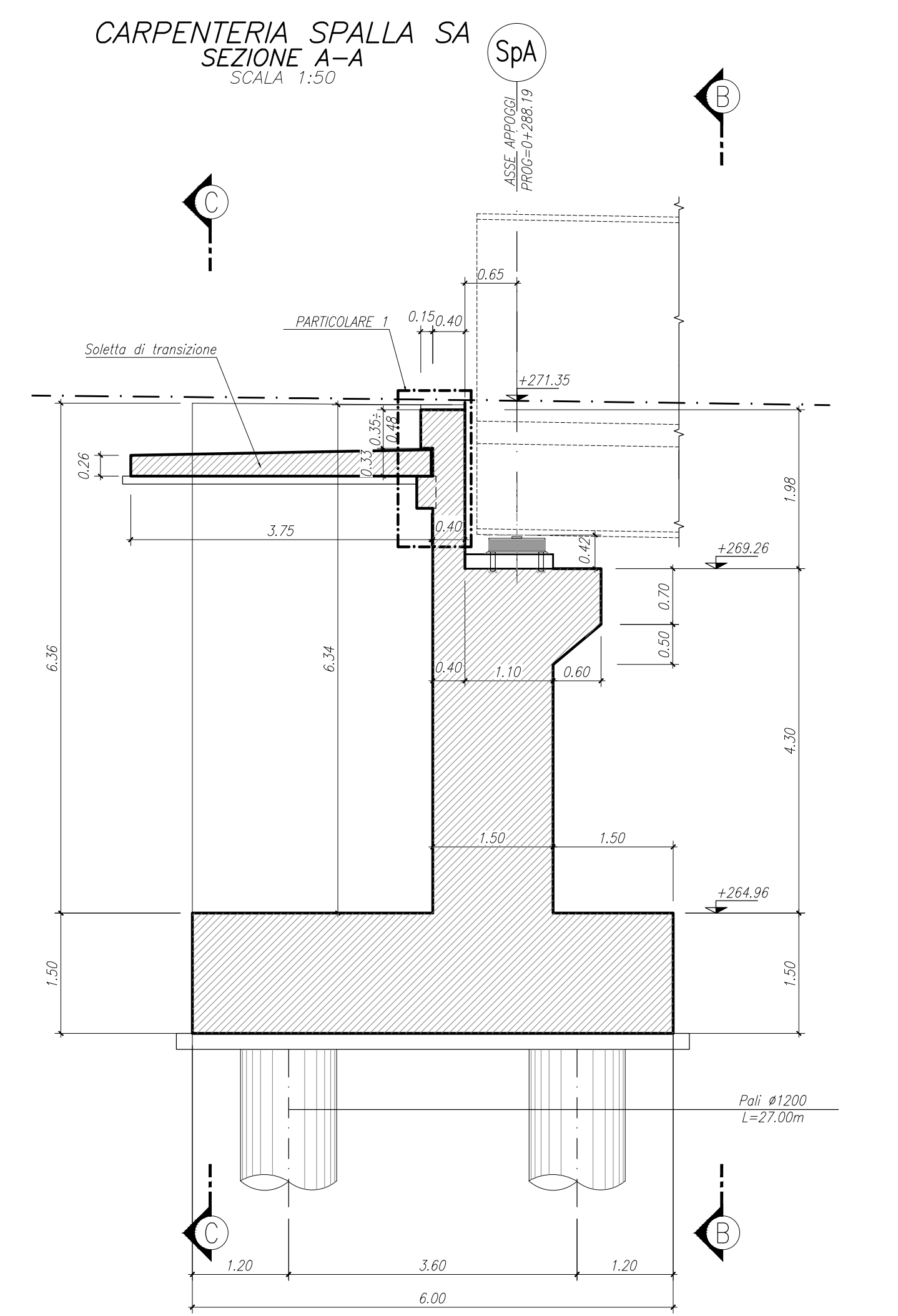
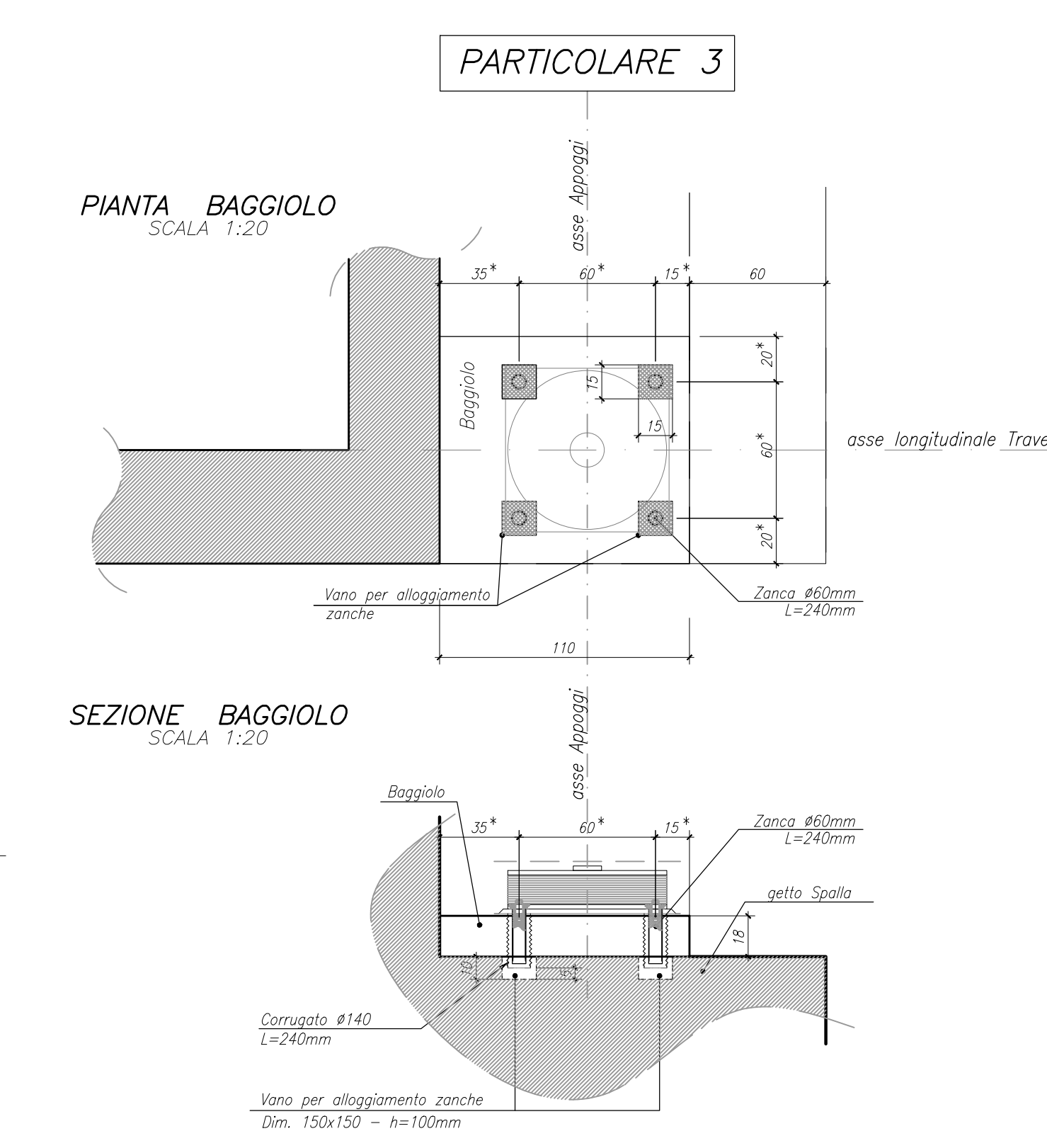
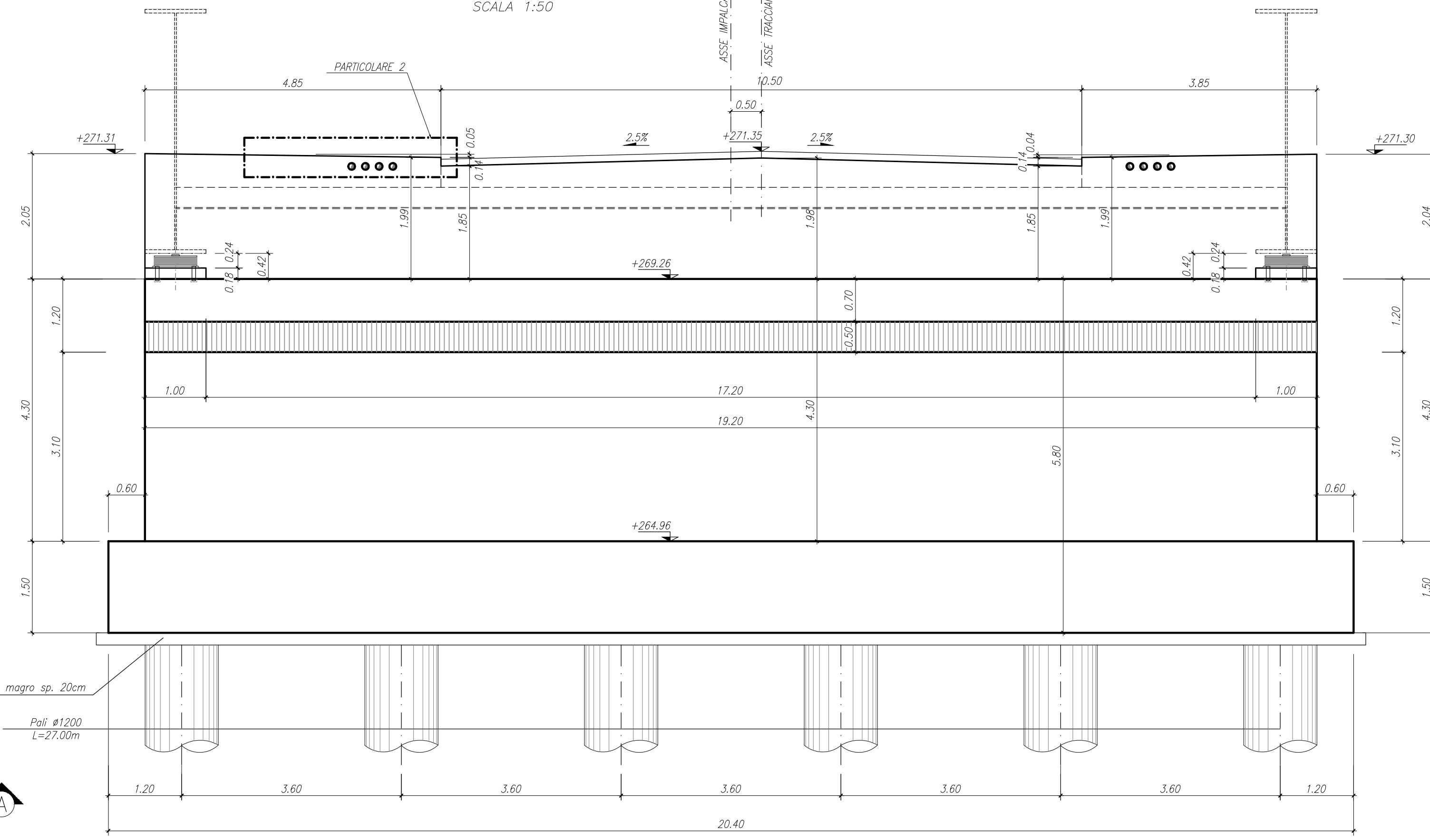
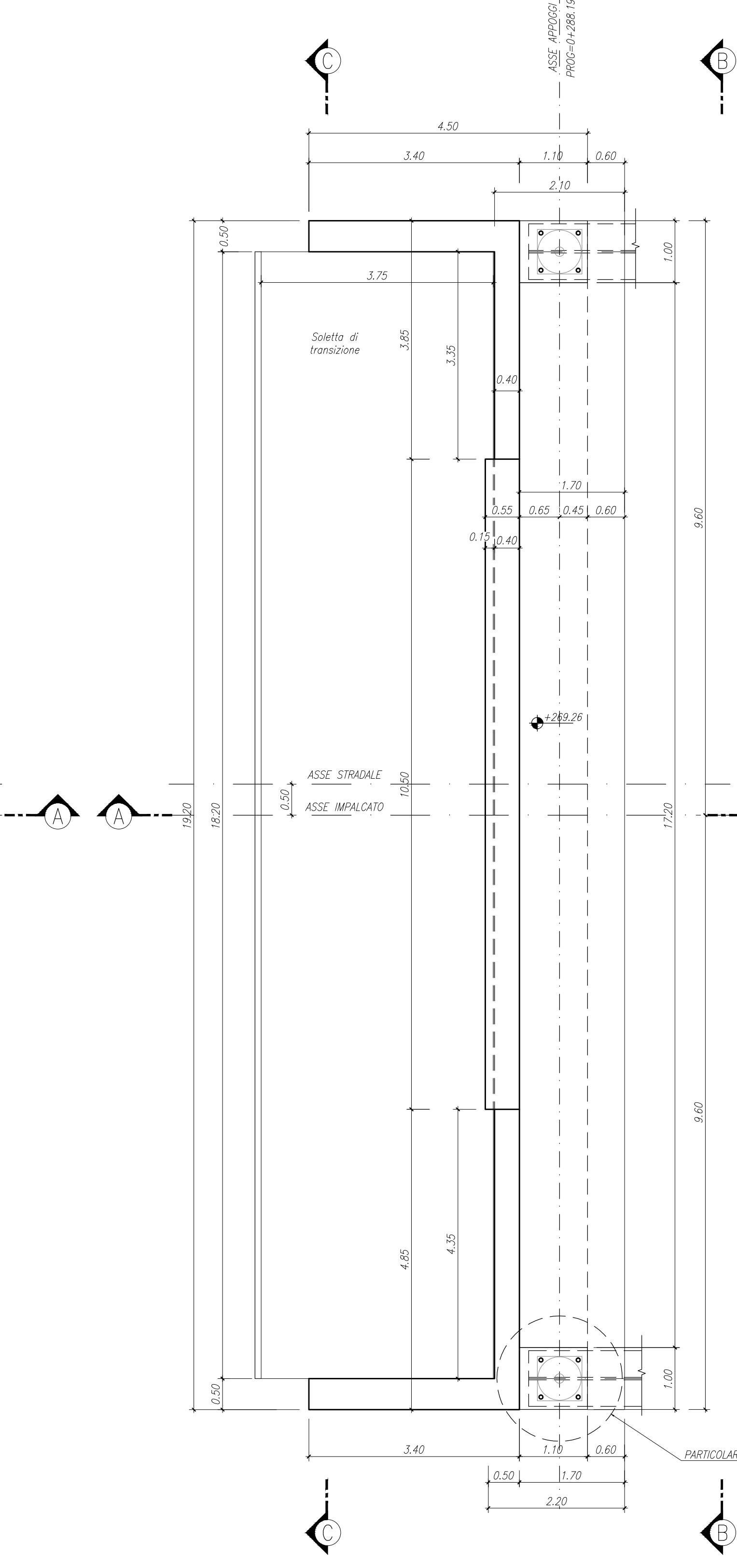
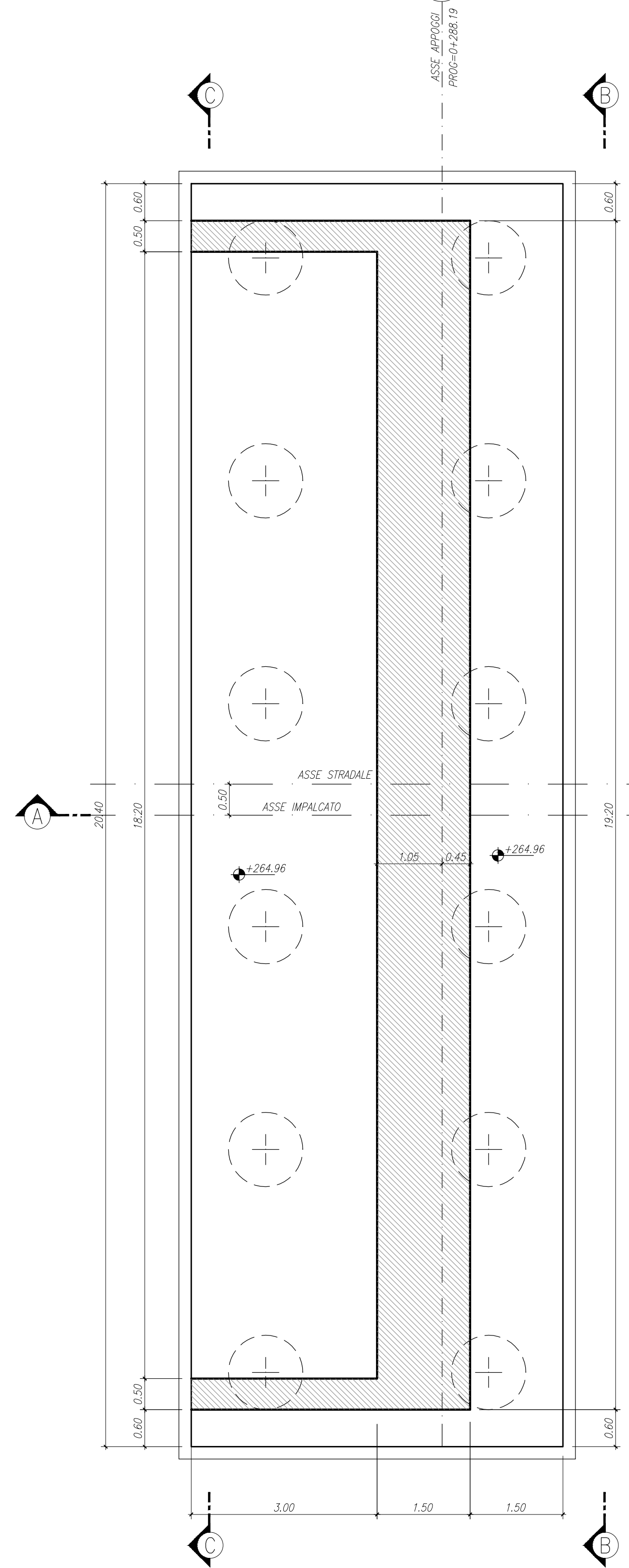
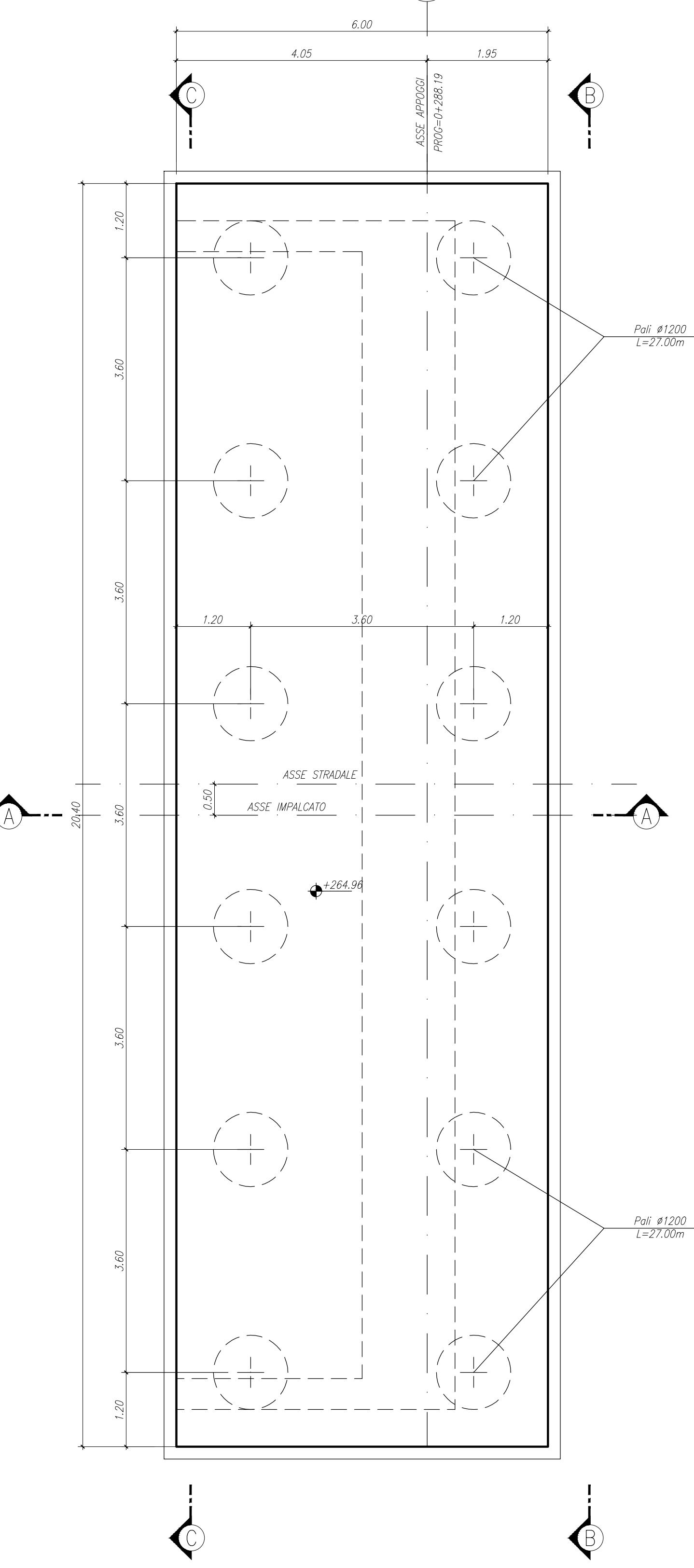


CARPENTERIA SPALLA SA
PIANTA FONDAZIONI
SCALA 1:50

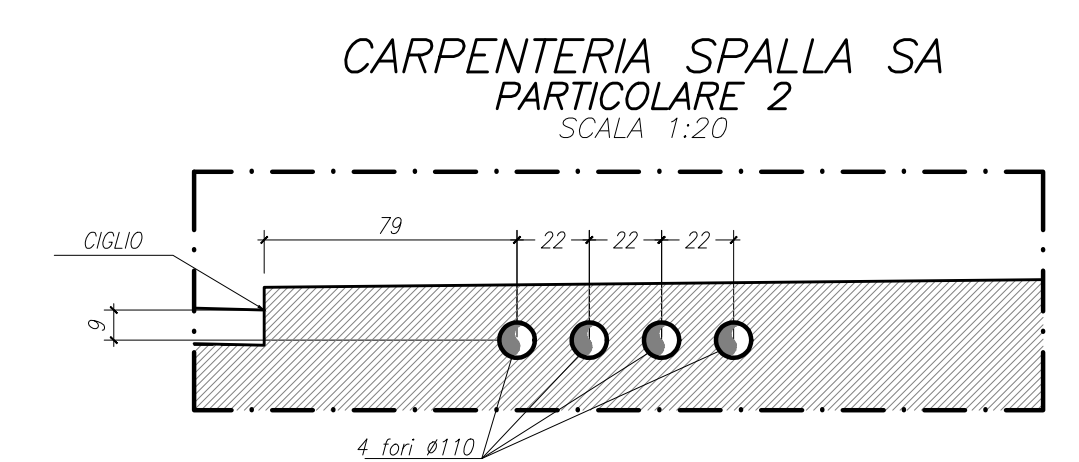
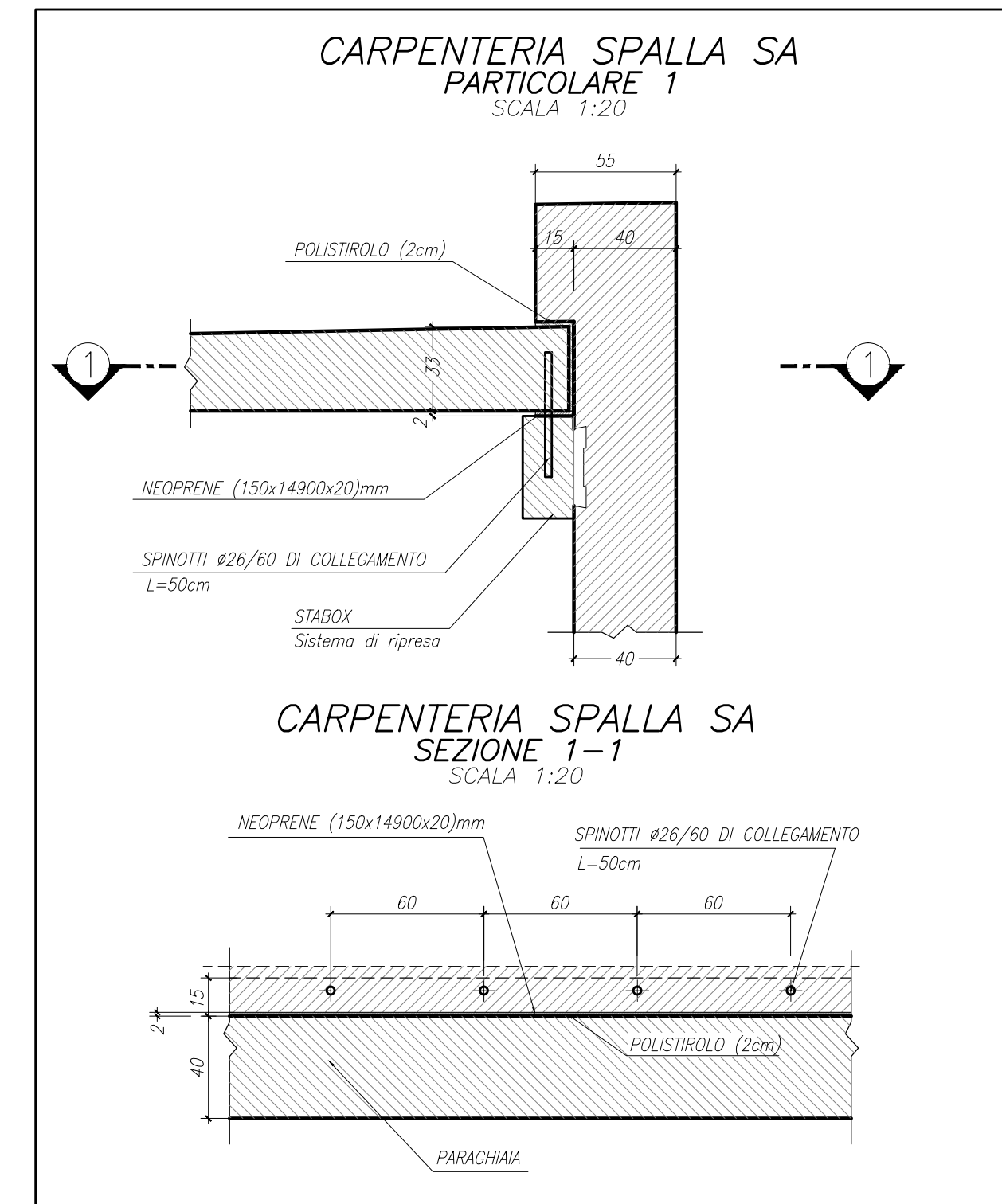
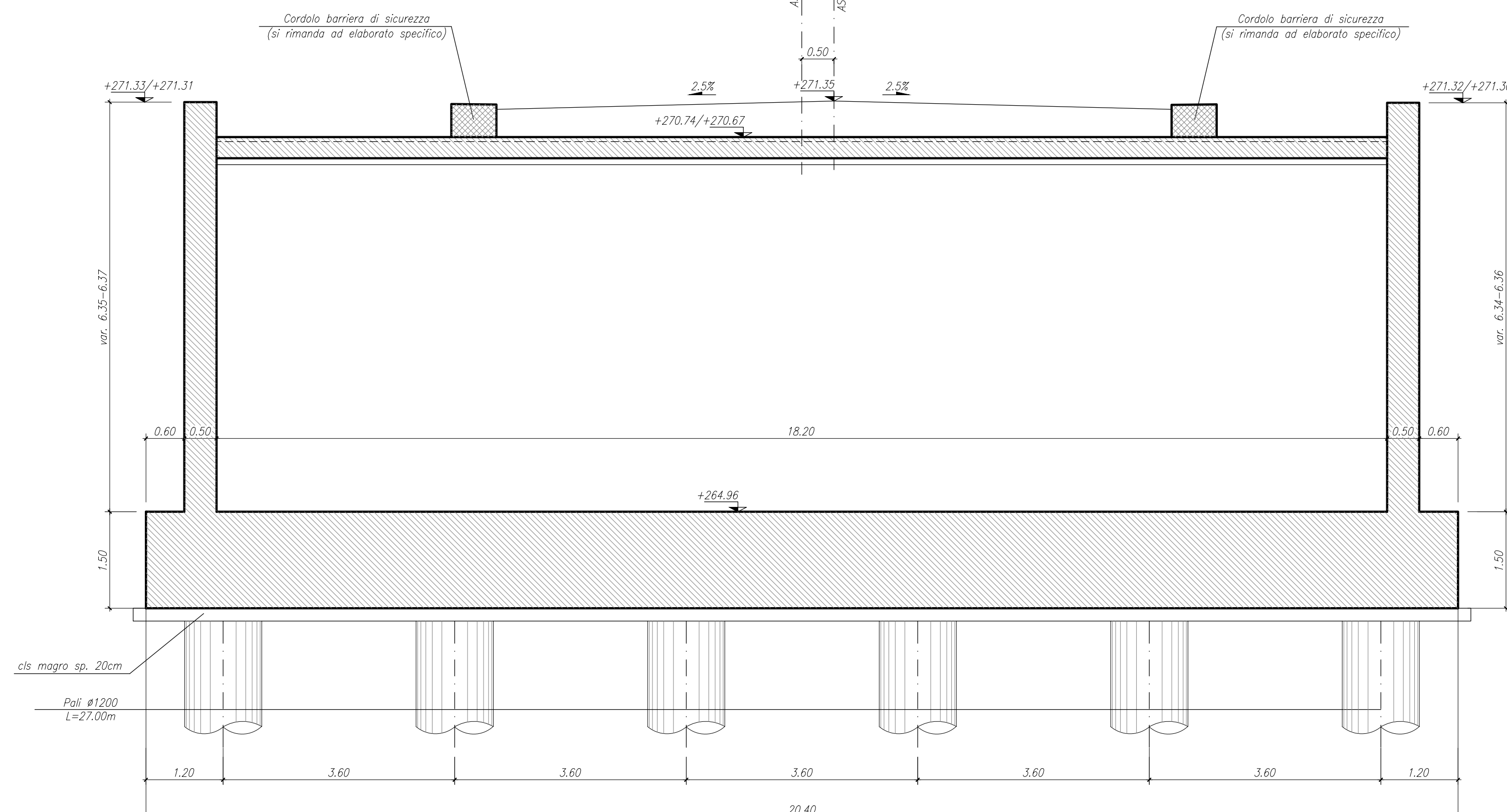
CARPENTERIA SPALLA SA
PIANTA SPICCATO
SCALA 1:50

CARPENTERIA SPALLA SA
VISTA DALL'ALTO
SCALA 1:50

CARPENTERIA SPALLA SA
VISTA B-B
SCALA 1:50



CARPENTERIA SPALLA SA
SEZIONE C-C
SCALA 1:50



N.B. PER LA TABELLA MATERIALI SI RINVIA ALL'ELABORATO SPECIFICO

MATRICE DI REVISIONE

REV	DATA	DESCRIZIONE MODIFICA

N.B. LA TAVOLA SOSTITUISCE QUELLA RELATIVA AL CODICE [] DEL PROGETTO ESECUTIVO

COLLEGAMENTO AUTOSTRADALE
DALMINE - COMO - VARESE - VALICO DEL BAGGIOLO E OPERE AD ESSO CONNESSE
TRATTE B1, B2, C, D, TRVA13+14, GREENWAY

AS BUILT
OPERE D'ARTE MINORI
CAVALCAVIA
CARPENTERIA SPALLA A

PROGETTISTA STRABAG A.C.	IMPRESA STRABAG S.p.A.	PROGETTO ESECUTIVO STRABAG S.p.A.	REVISIONE STRABAG S.p.A.
------------------------------------	----------------------------------	---	------------------------------------

STRABAG

371 ITALIA S.p.A.