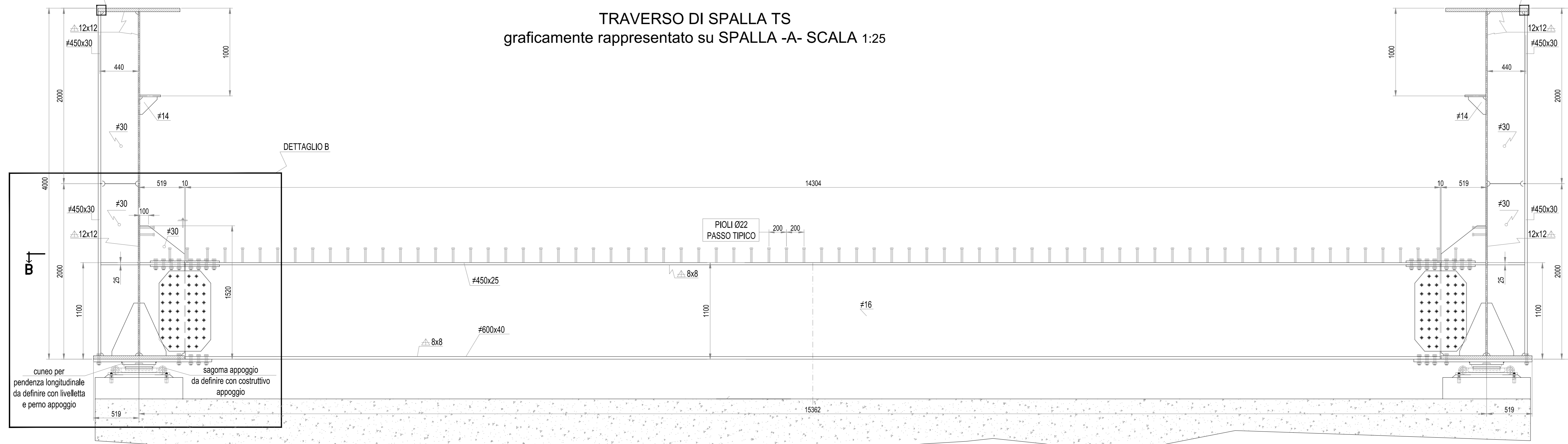
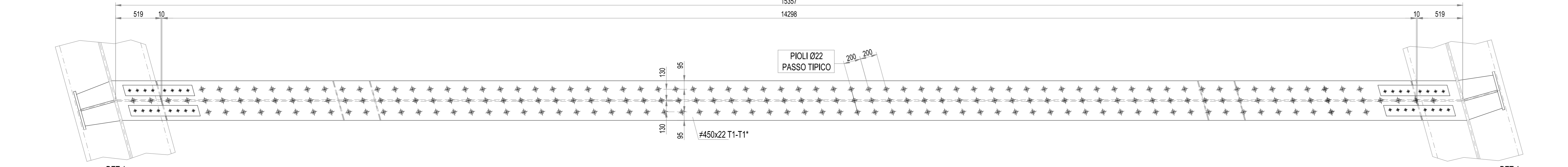
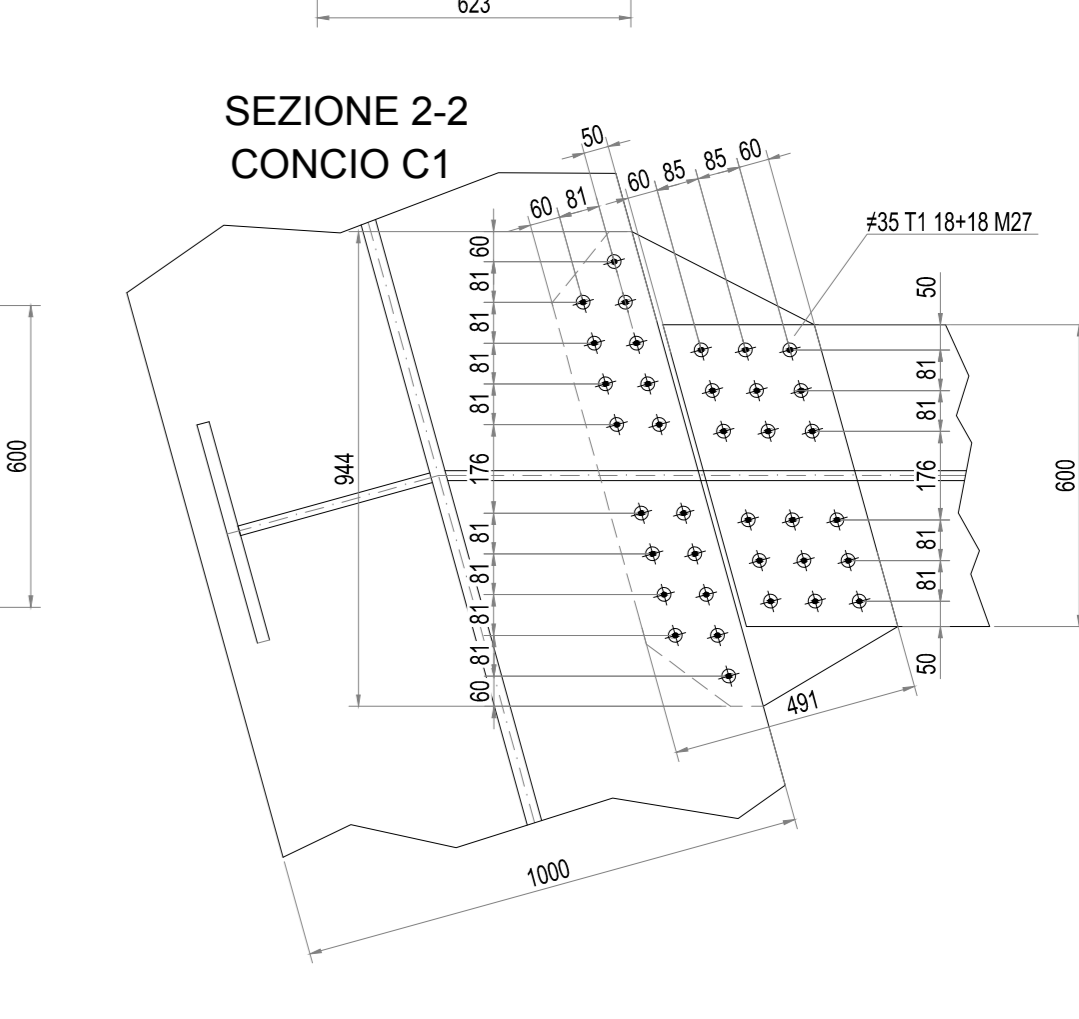
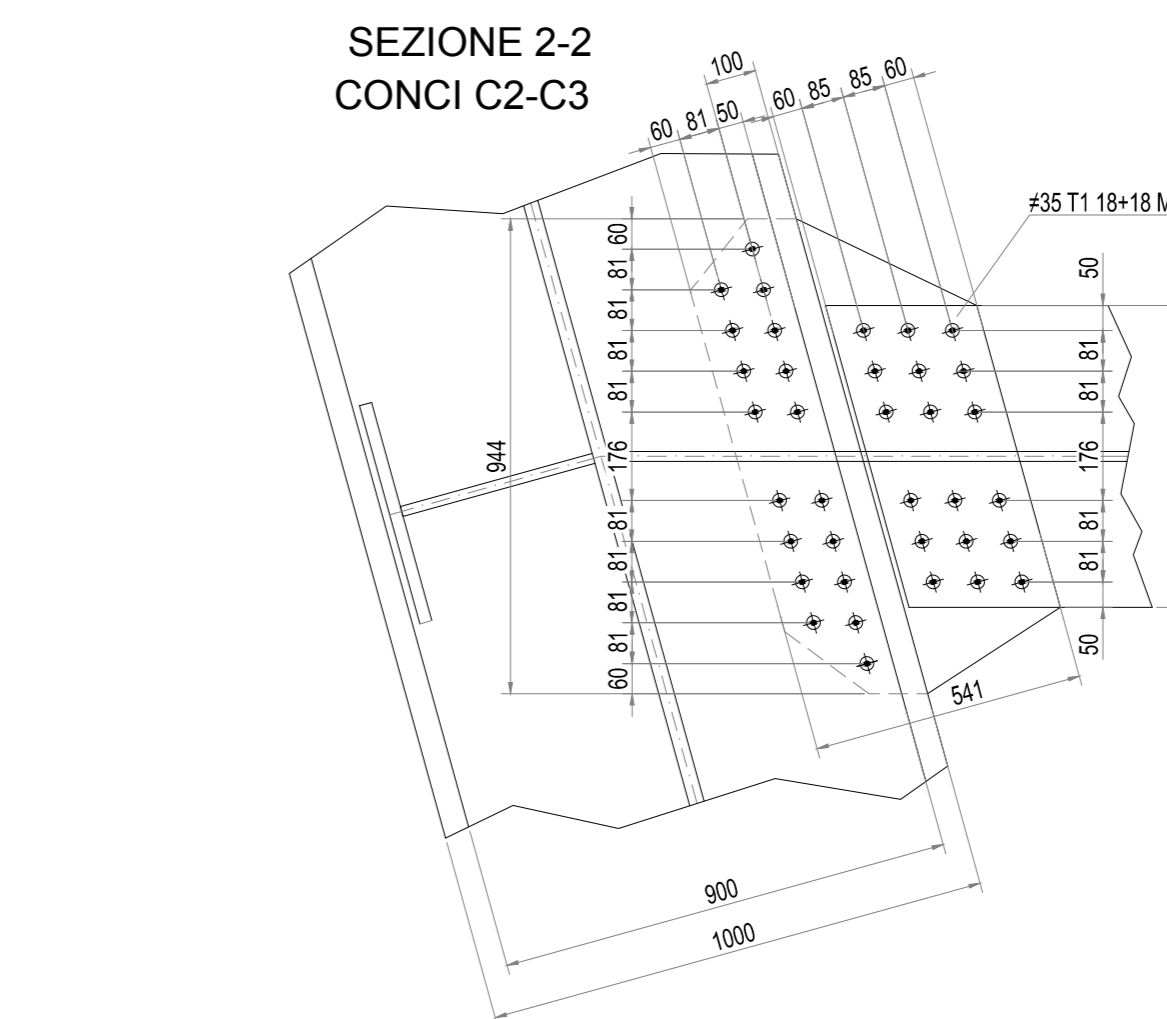
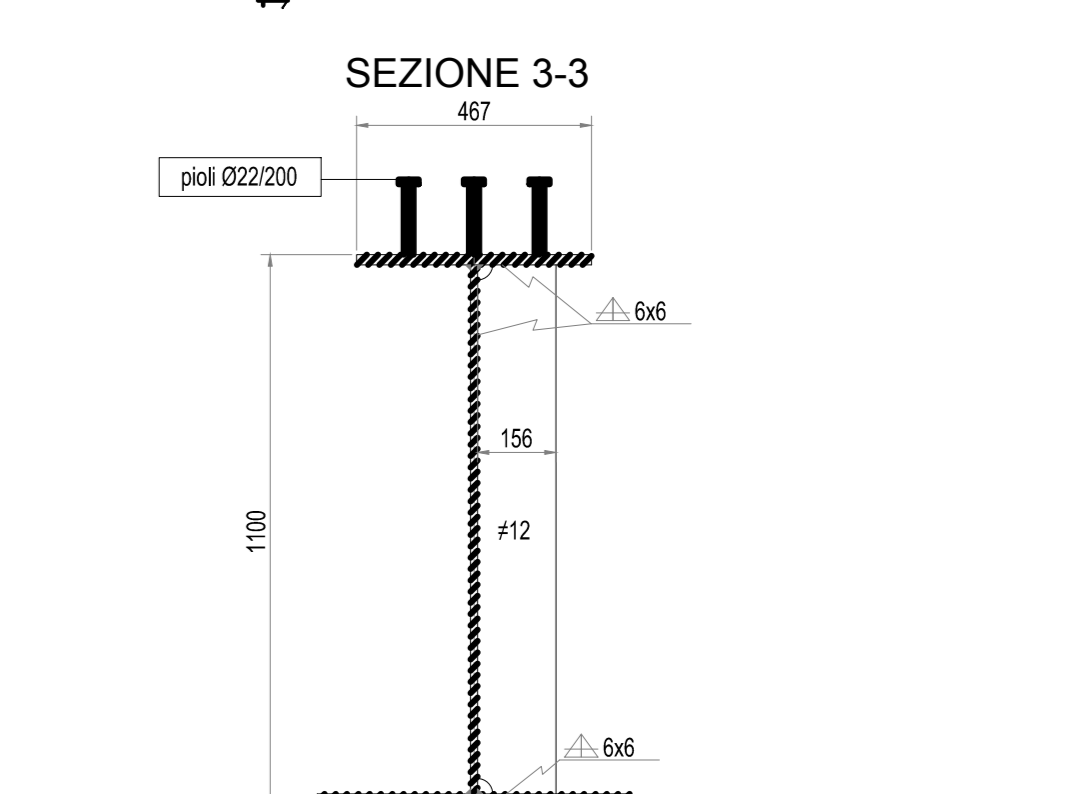
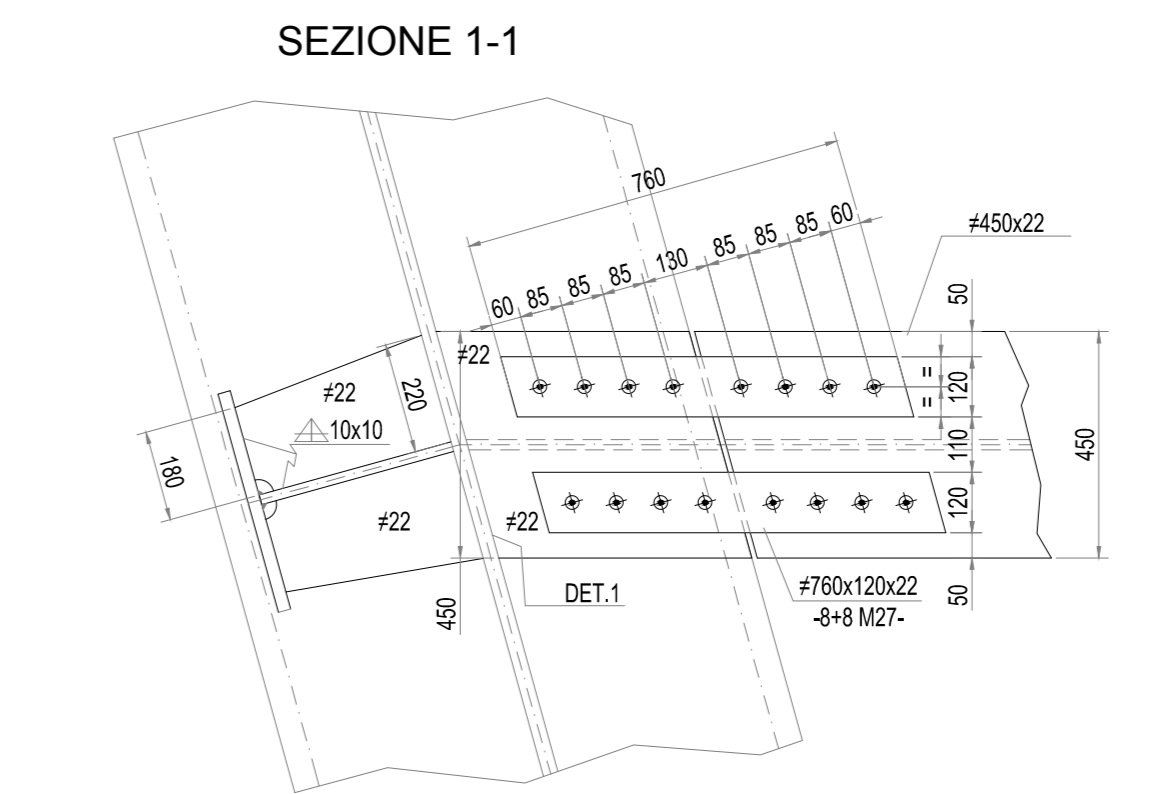
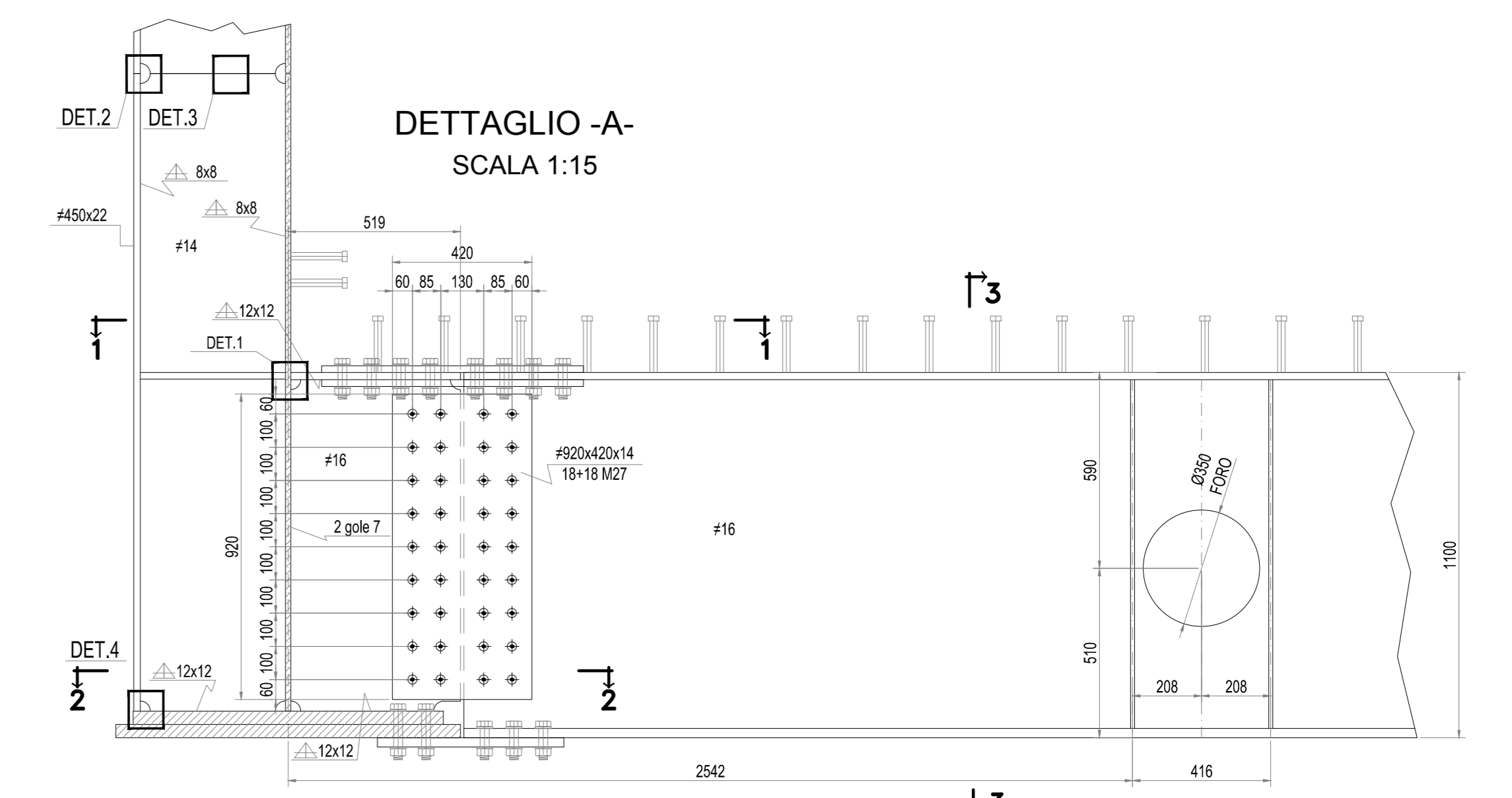
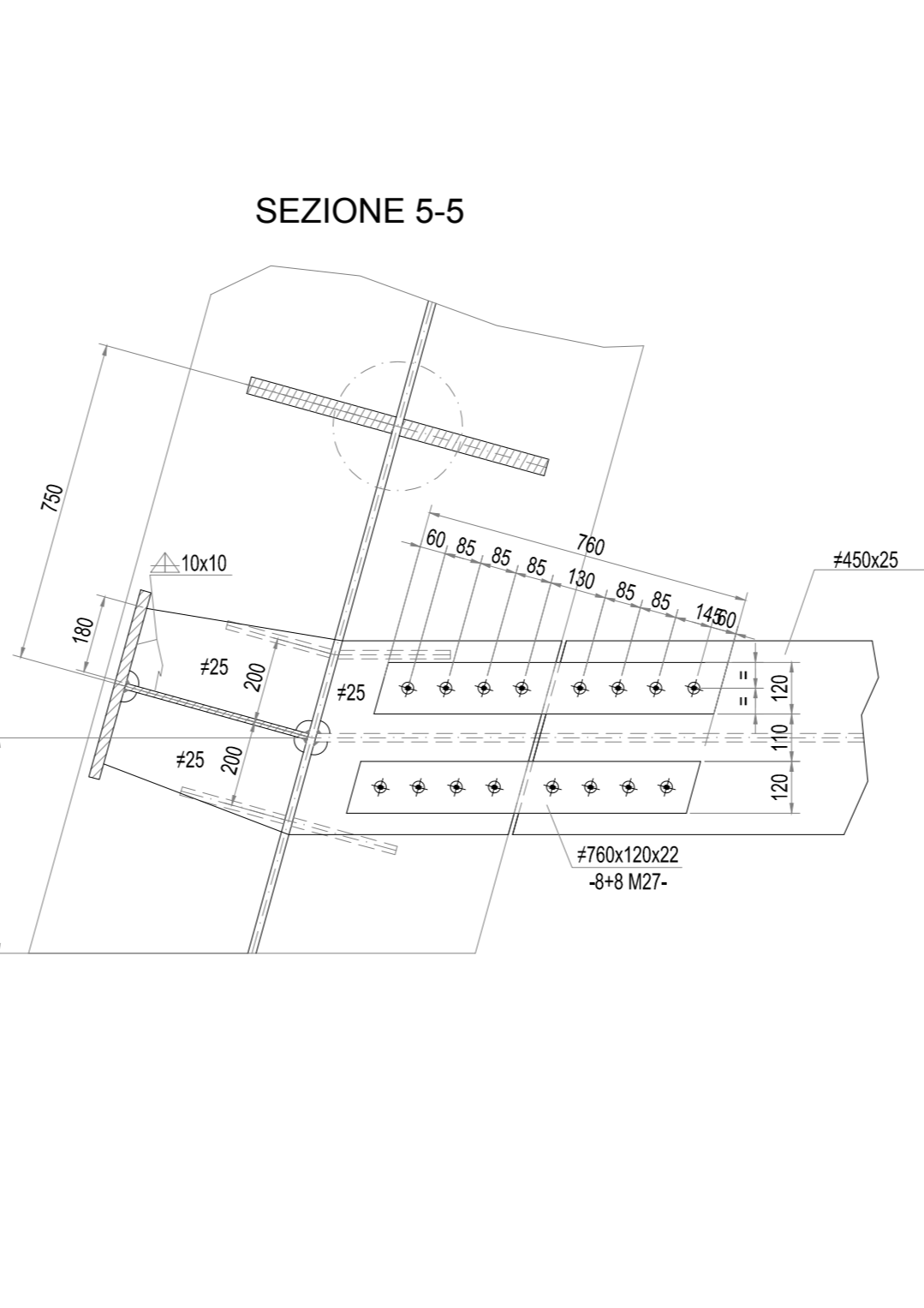
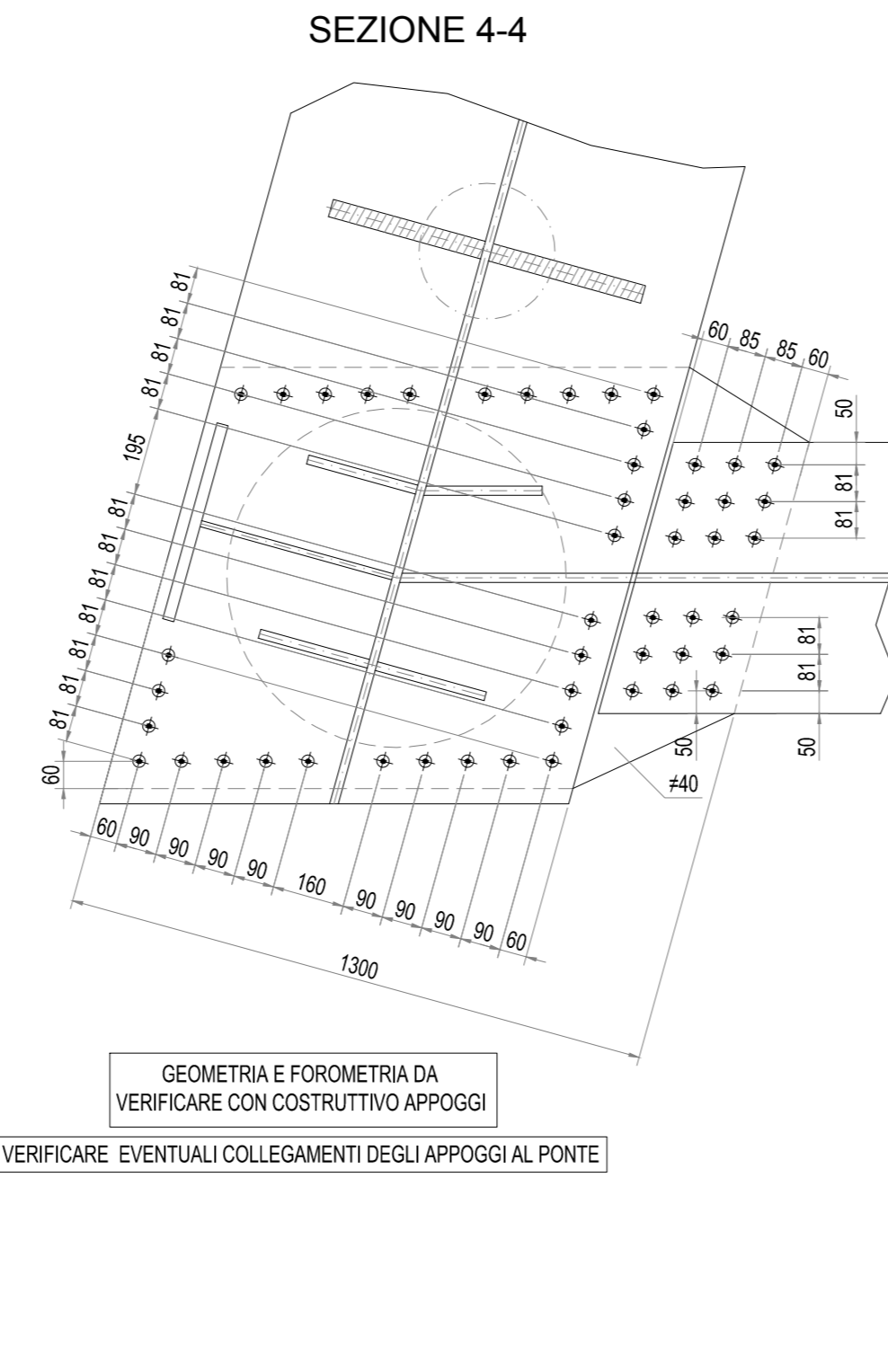
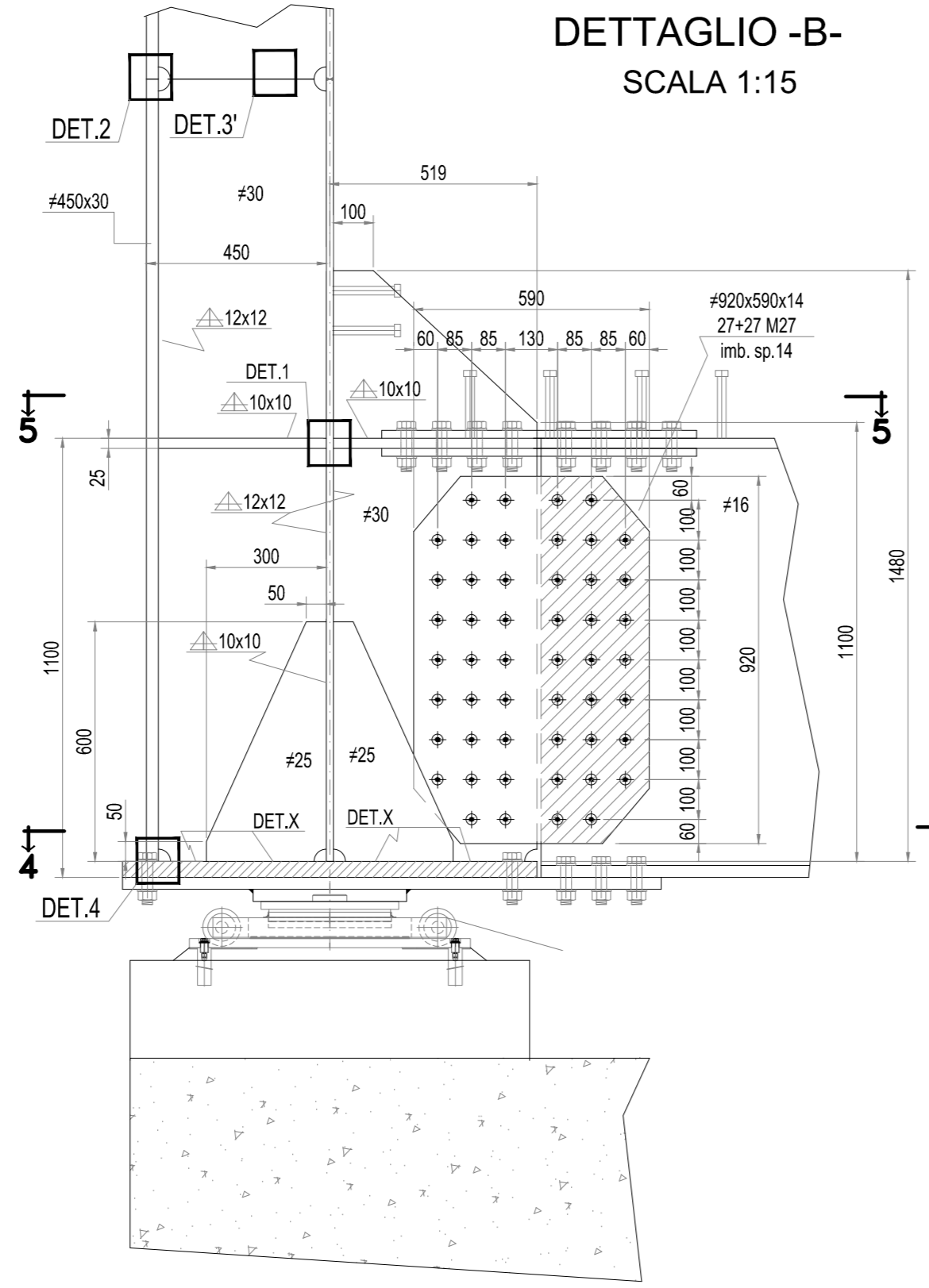
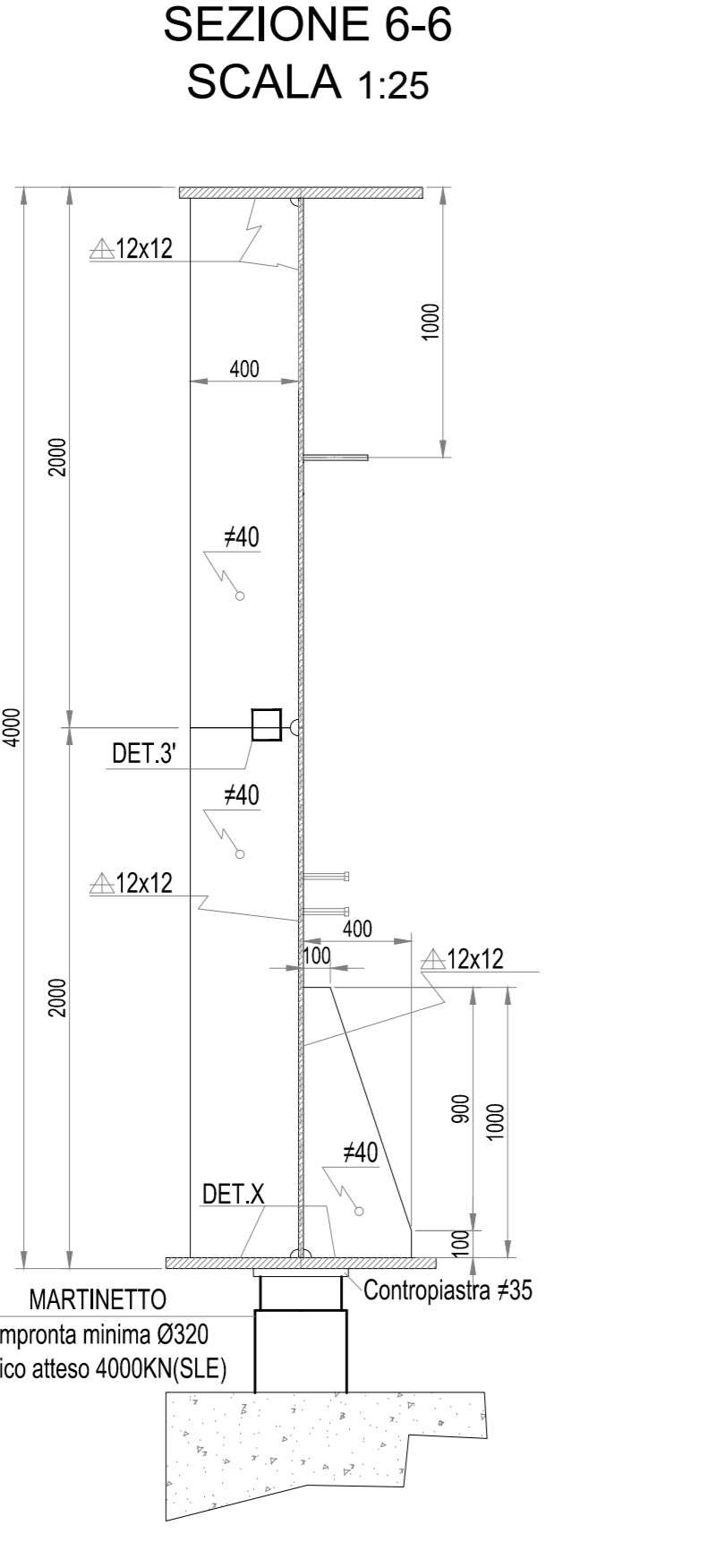
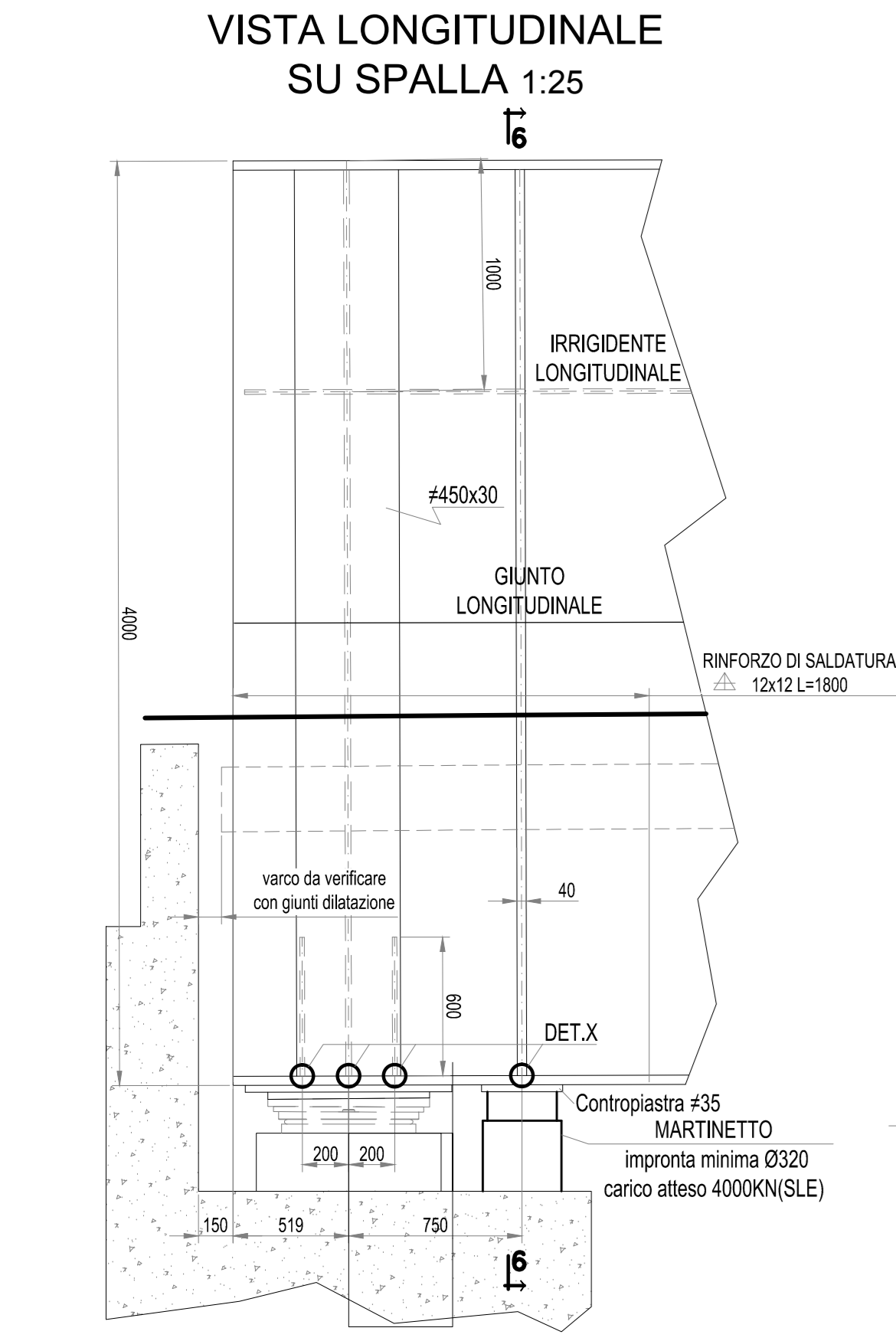
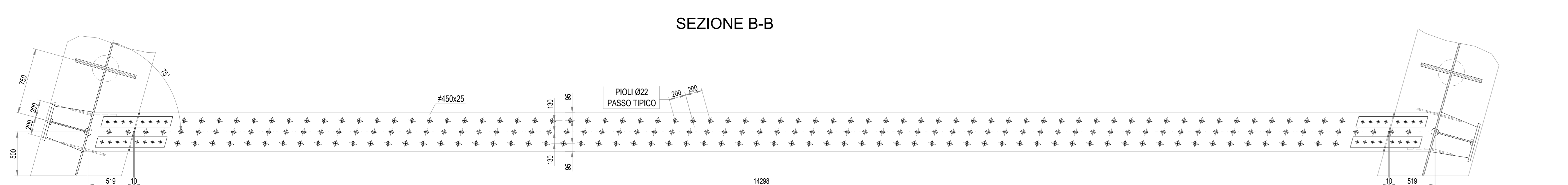


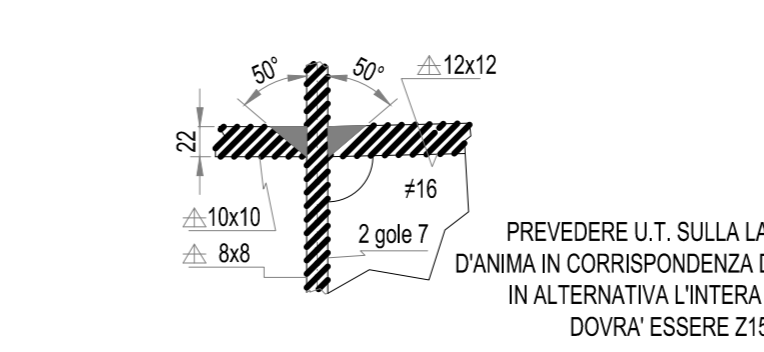
SEZIONE A-A



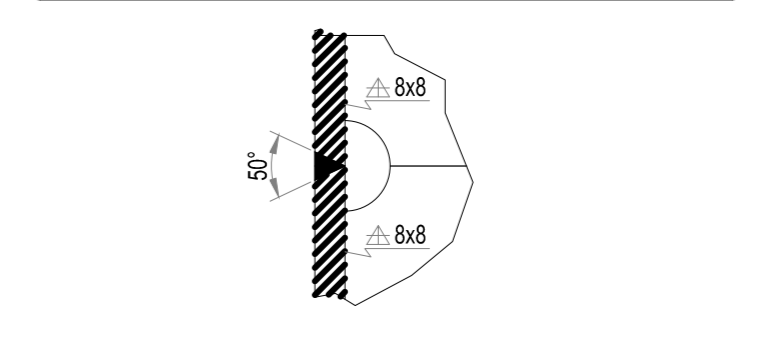
SEZIONE B-B



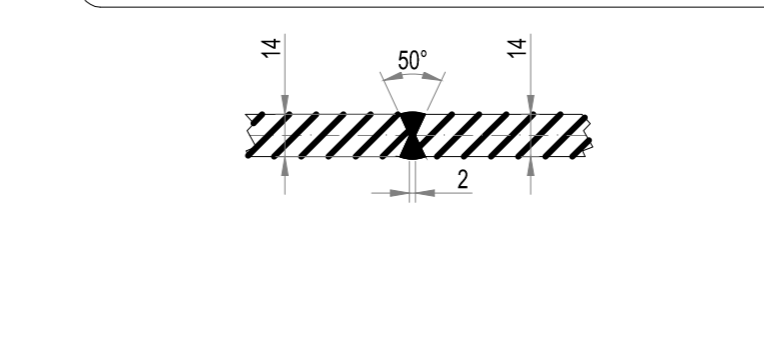
DETTAGLIO -1- SCALA 1:5



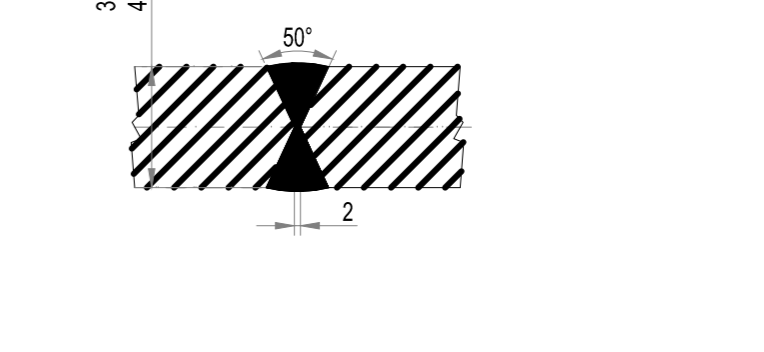
DETTAGLIO -2- SCALA 1:5



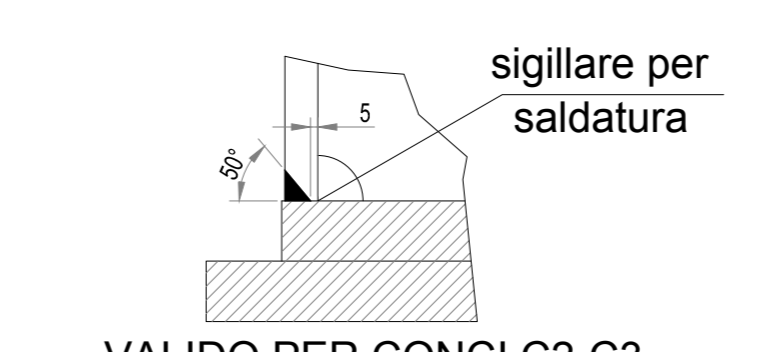
DETTAGLIO -3- SCALA 1:2.5



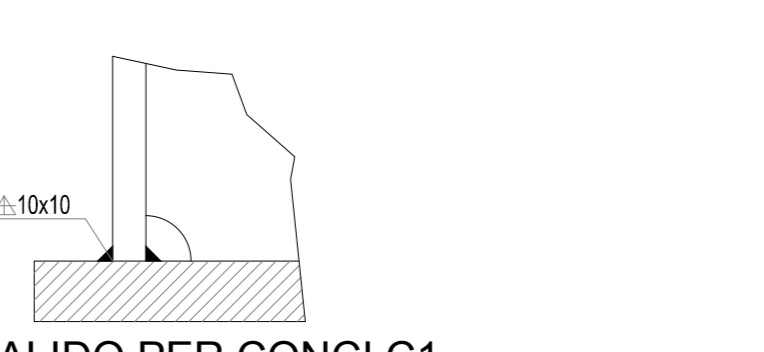
DETTAGLIO -3'- SCALA 1:2.5



DETTAGLIO -4- SCALA 1:5



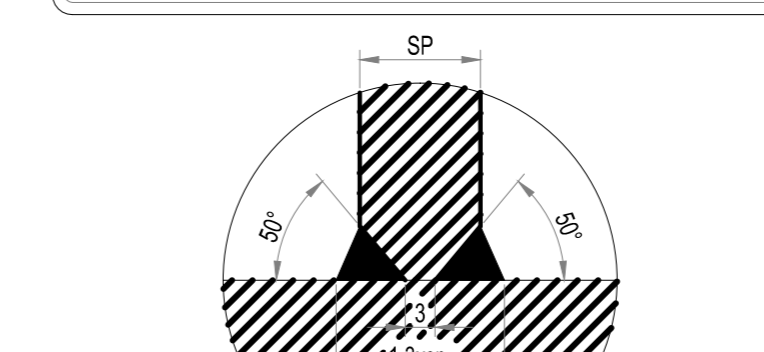
DETTAGLIO -4- SCALA 1:5



DETTAGLI 1-2-3-3'-4-Y

Saldature a piena penetrazione di 1 cl. molate in direzione degli sforzi.

DETTAGLIO -X- SCALA 1:5



DETTAGLIO FINE IRRIGIDENTE



MATRICE DI REVISIONE		
REV	DATA	DESCRIZIONE MODIFICA

N.B.: LA TAVOLA SOSTITUISCE QUELLA RELATIVA AL CODICE [] DEL PROGETTO ESECUTIVO

COLLEGAMENTO AUTOSTRADALE DALMINE - COMO - VARESE - VALICO DEL GAGGIOLO E OPERE AD ESSO CONNESSE
TRATTE B1, B2, C, D, TRVA13+14, GREENWAY
AS BUILT
TRATTA B1
OPERE D'ARTE MINORI
CAVALCAVIA
CAVALCAVIA VIABILITA' LOCALE RAMO VC02 - SVINCOLO "INTERCONNESSIONE EX SS35"
DIAPHRAMI INTERMEDI E DI SPALLA

IDENTIFICAZIONE ELABORATO
 CODICE PROGETTO: F01078
 VISEI

IMPRESA
 RAGGRUPPAMENTO TEMPORANEO IMPRESE:
 STRABAG A.G. - GL F Grandi Lavori Fincantieri S.p.A. - Impresa costruzioni Giuseppe Muliaro S.p.A. - Meridiana costruzioni STRABAG S.p.A.

CONCEDENTE
 CONSORZIO AUTOSTRADALE CAVALCAVIA
 RESPONSABILE DI PROGETTO ED INCARICATO DELL'INTEGRAZIONE FRA LE VARESE PRESTAZIONI:
 Ing. Alberto Caracciolo

CONCESSIONARIO
 STI PROGETTI ITALIA S.p.A.

ELABORAZIONE PROGETTUALE
 PROGETTISTA:
 STI PROGETTI ITALIA S.p.A.

3TI ITALIA S.p.A.
 DIRETTORE TECNICO
 Ing. Stefano Jacca Pissani
 COORDINATORE INGEGNERI
 Dott. Carlo Mangano
 Provincia di Roma, n. 20809

Redatto: Vido Verificato: Di Sesto Approvato: Possati