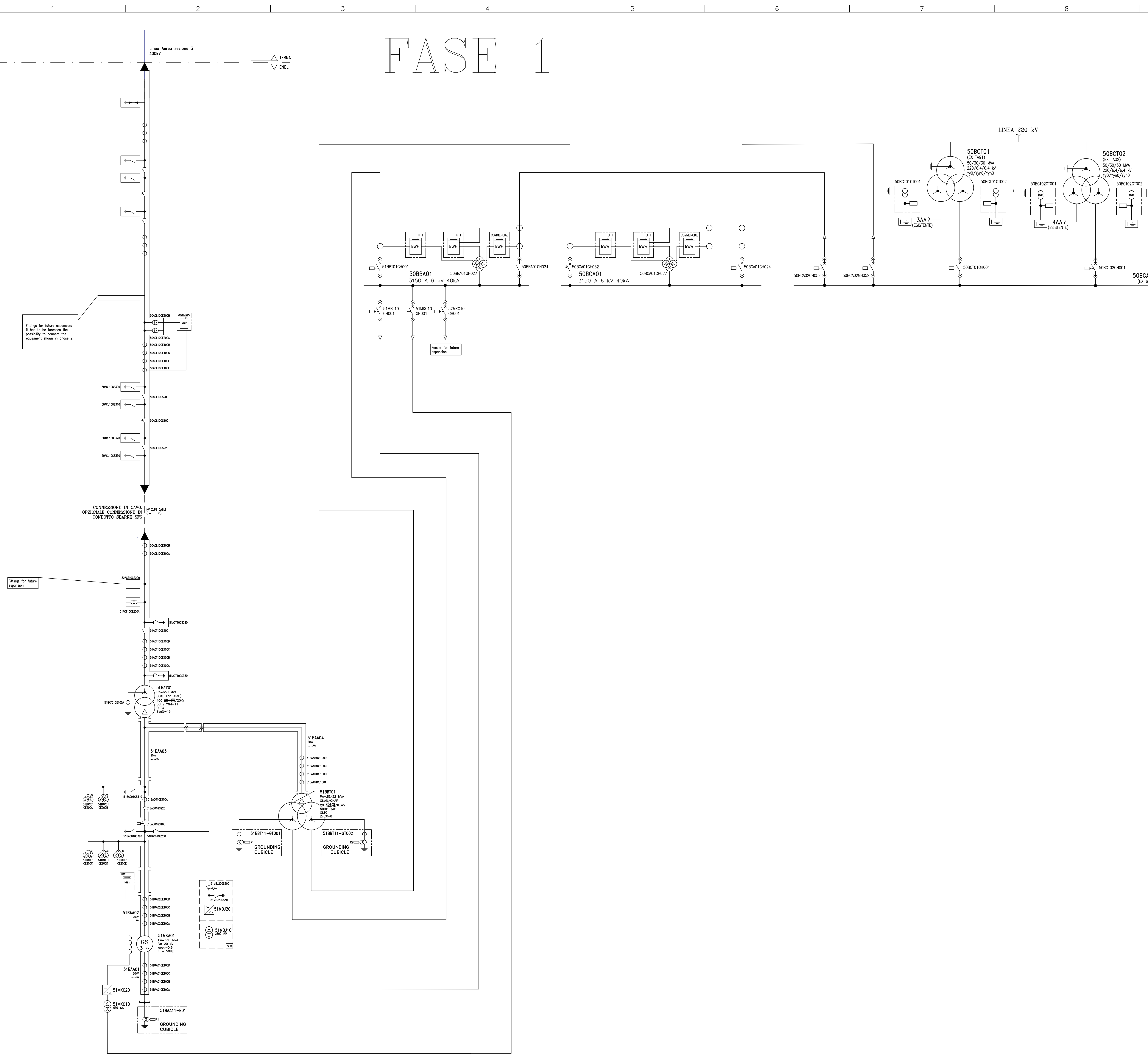
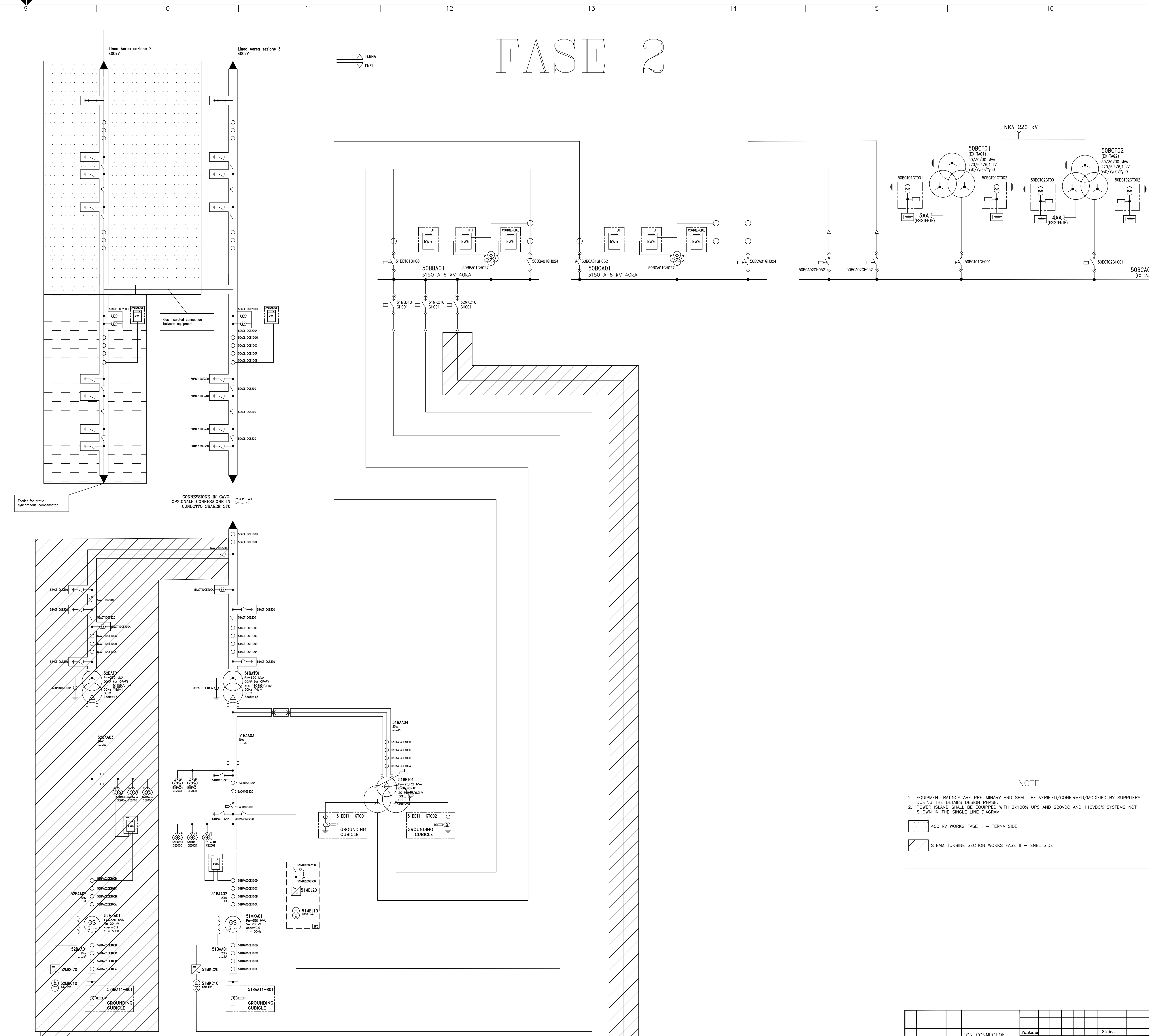


La Spezia – 2_PBCSP30016.01

FASE 1



FASE 2



NOTE

- EQUIPMENT RATINGS ARE PRELIMINARY AND SHALL BE VERIFIED/CONFIRMED/MODIFIED BY SUPPLIERS DURING THE DETAILED DESIGN PHASE.
- POWER ISLAND SHALL BE EQUIPPED WITH 2x100kVA UPS AND 220VDC SYSTEMS NOT SHOWN IN THE SINGLE LINE DIAGRAM.
- 400 kV WORKS FASE II - TERNA SIDE
- STEAM TURBINE SECTION WORKS FASE II - ENEL SIDE

REV.	DATE	SCALE	REVISION DESCRIPTION	DESIGNED BY	CHECKED BY	APPROVED BY	GROUP
01	04/12/2020	LC	FOR CONNECTION REQUIREMENT				PE
CLIENT			ENEL GLOBAL GENERATION - GENERATION ITALY	ENEL			
PROJECT			CAPACITY STRATEGY ITALY	ENEL			
ENGINEERING AND TECHNICAL SUPPORT			LA SPEZIA	ENEL			
TITLE			HV CONNECTION SINGLE LINE DIAGRAM - TWO PHASES	ENEL			
SCALE			PBCSP30016	7B			
SCALE			1:1	AD D I I E			
SCALE			1:1	AD D I I E			
SCALE			1:1	AD D I I E			