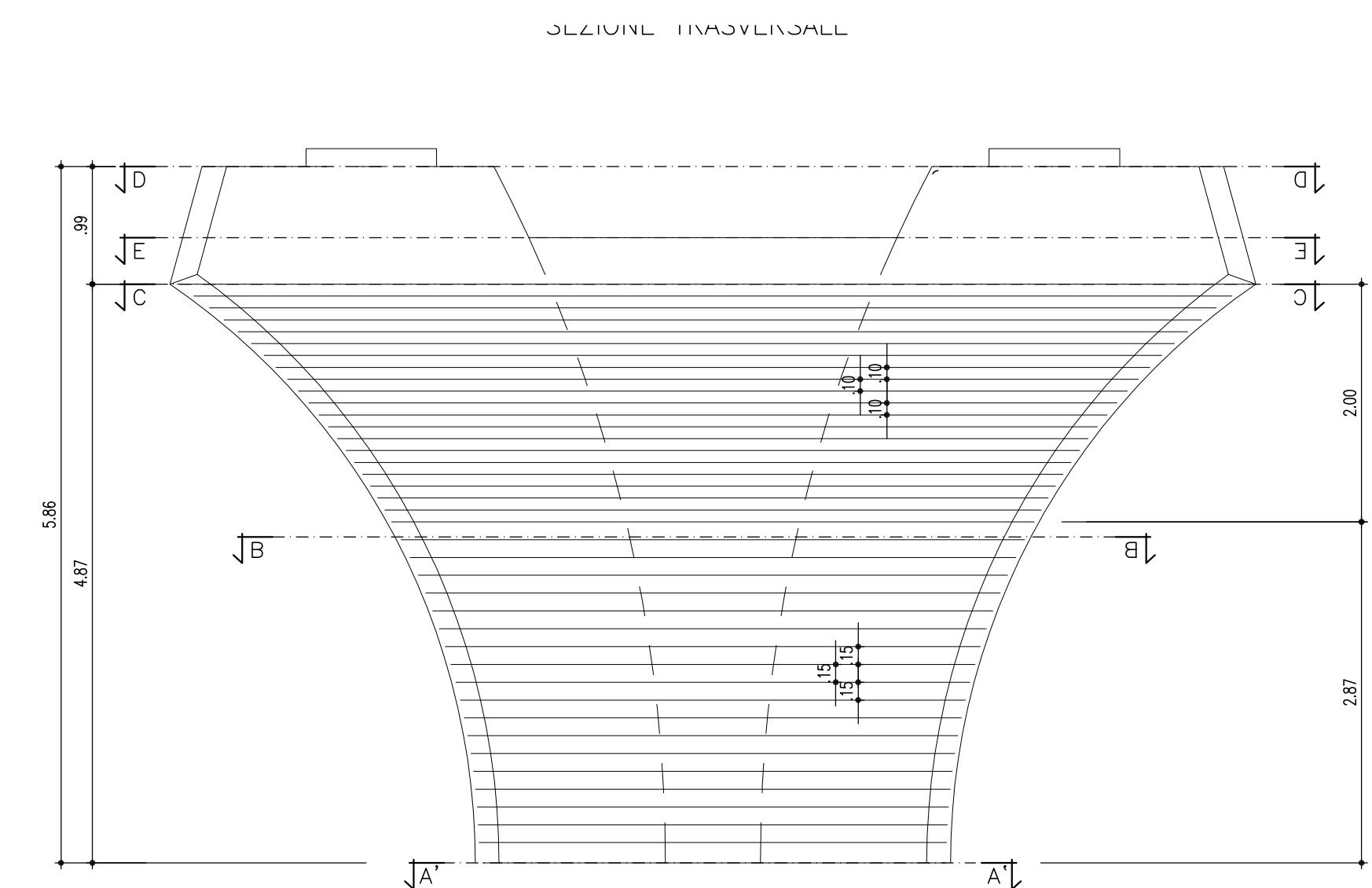
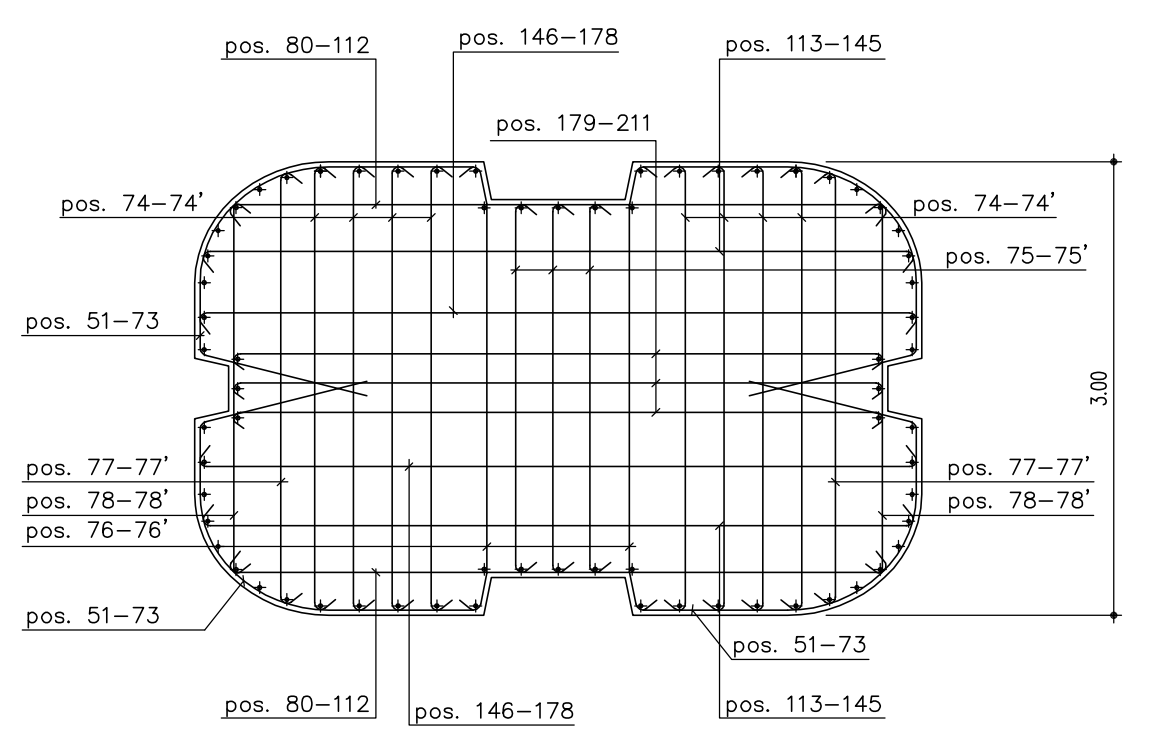


ARMATURA PULVINO E BAGGIOLI PILA 2 DX TAV 2/2 (SCALA 1 : 50)



Sezione B-B



Sezione C-C

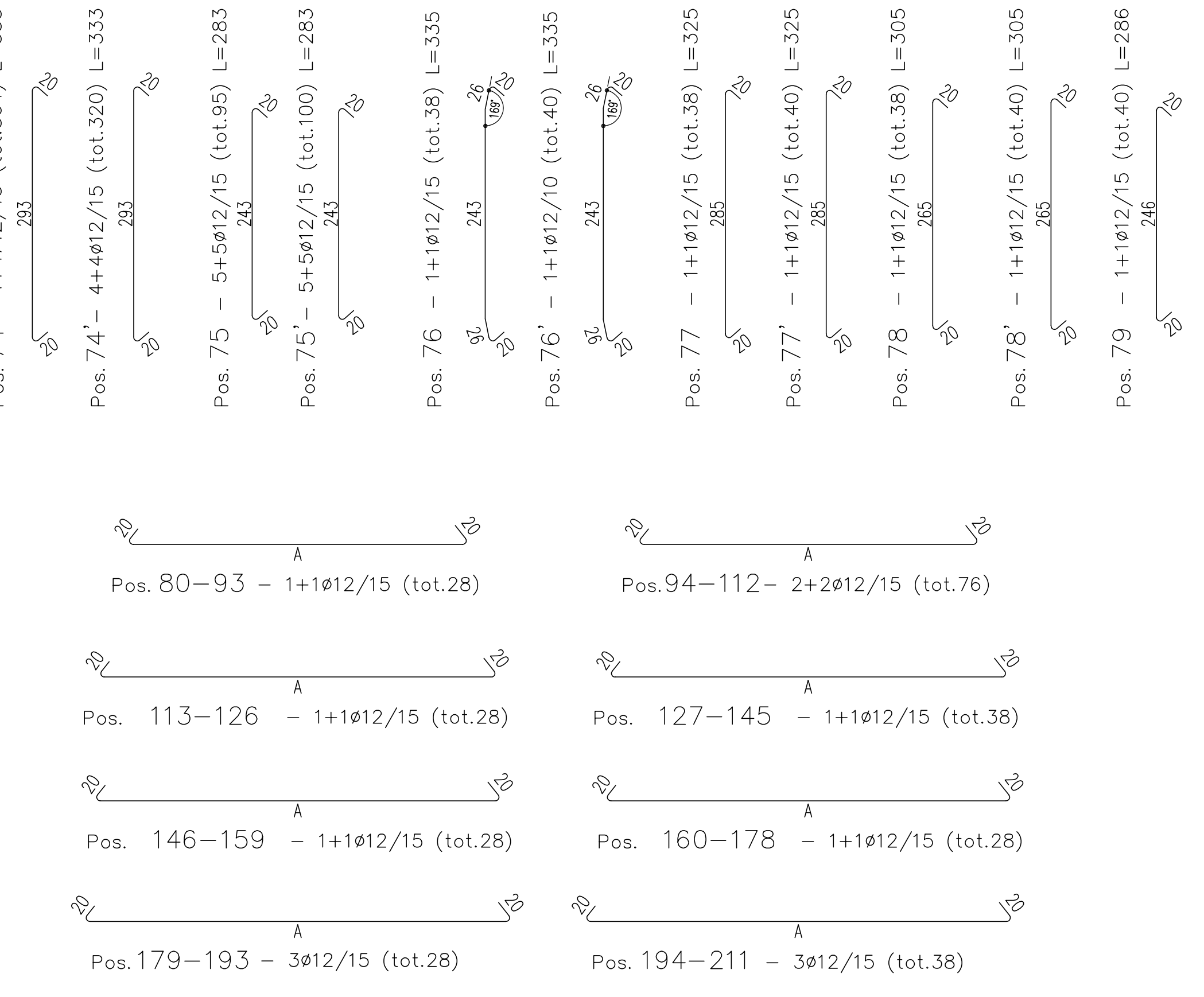
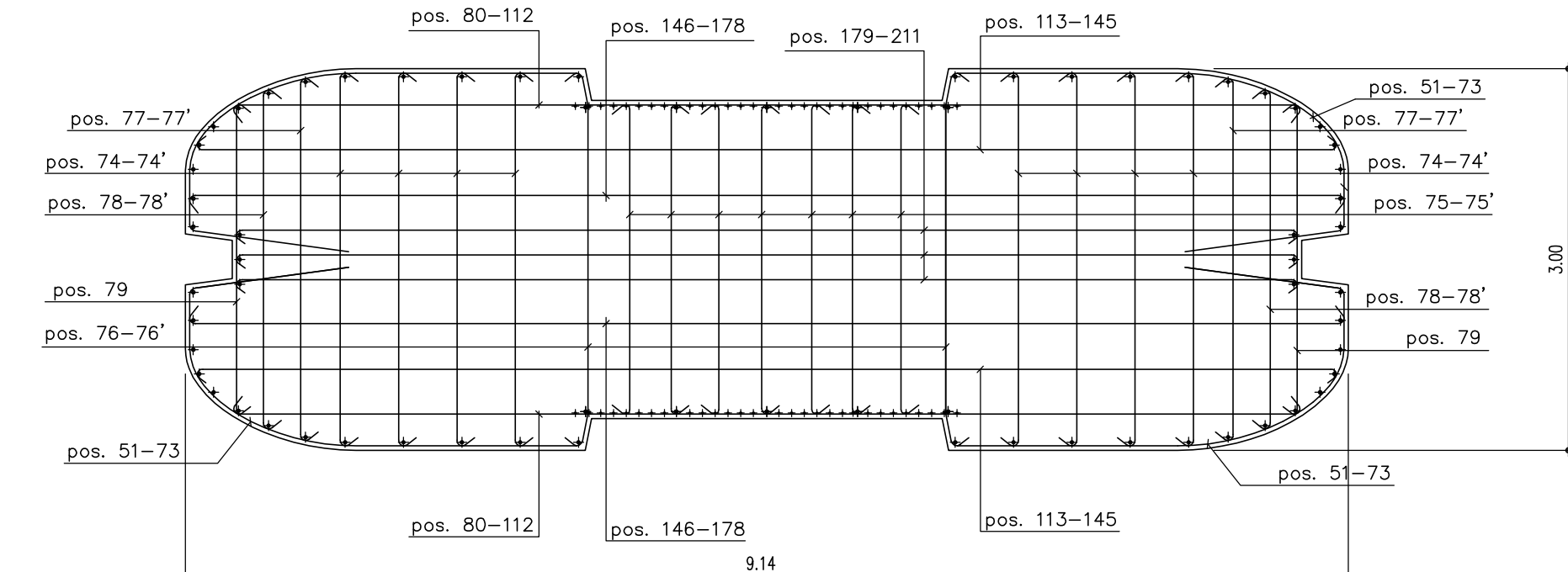
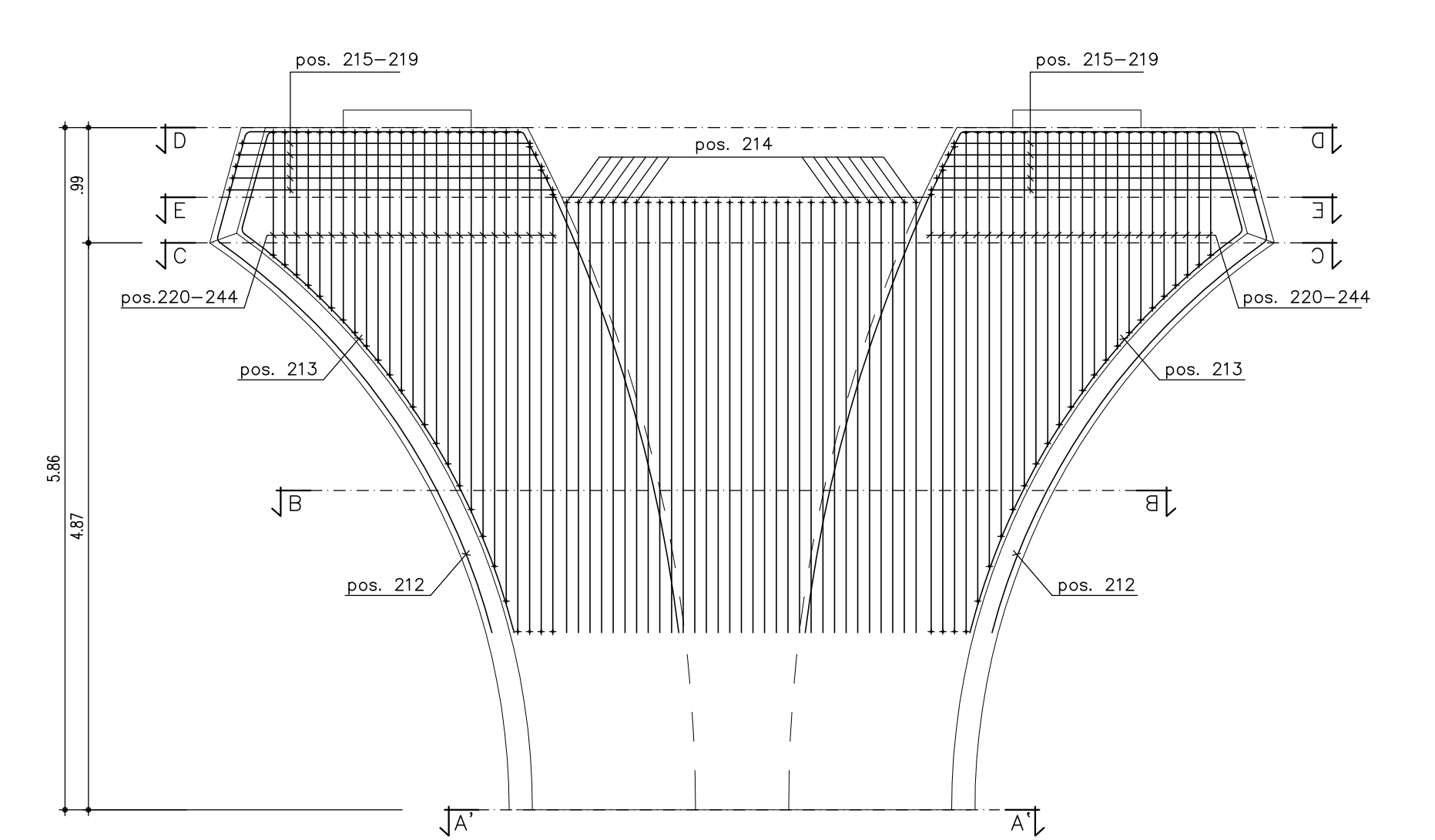


Table with 14 columns: Sagoma, Pos., ø (mm), nb, A (cm), B (cm), C (cm), D (cm), E (cm), F (cm), L (m), Ltot (m). It lists reinforcement bar details for positions 51 to 199.

SEZIONE TRASVERSALE



Sezione D-D

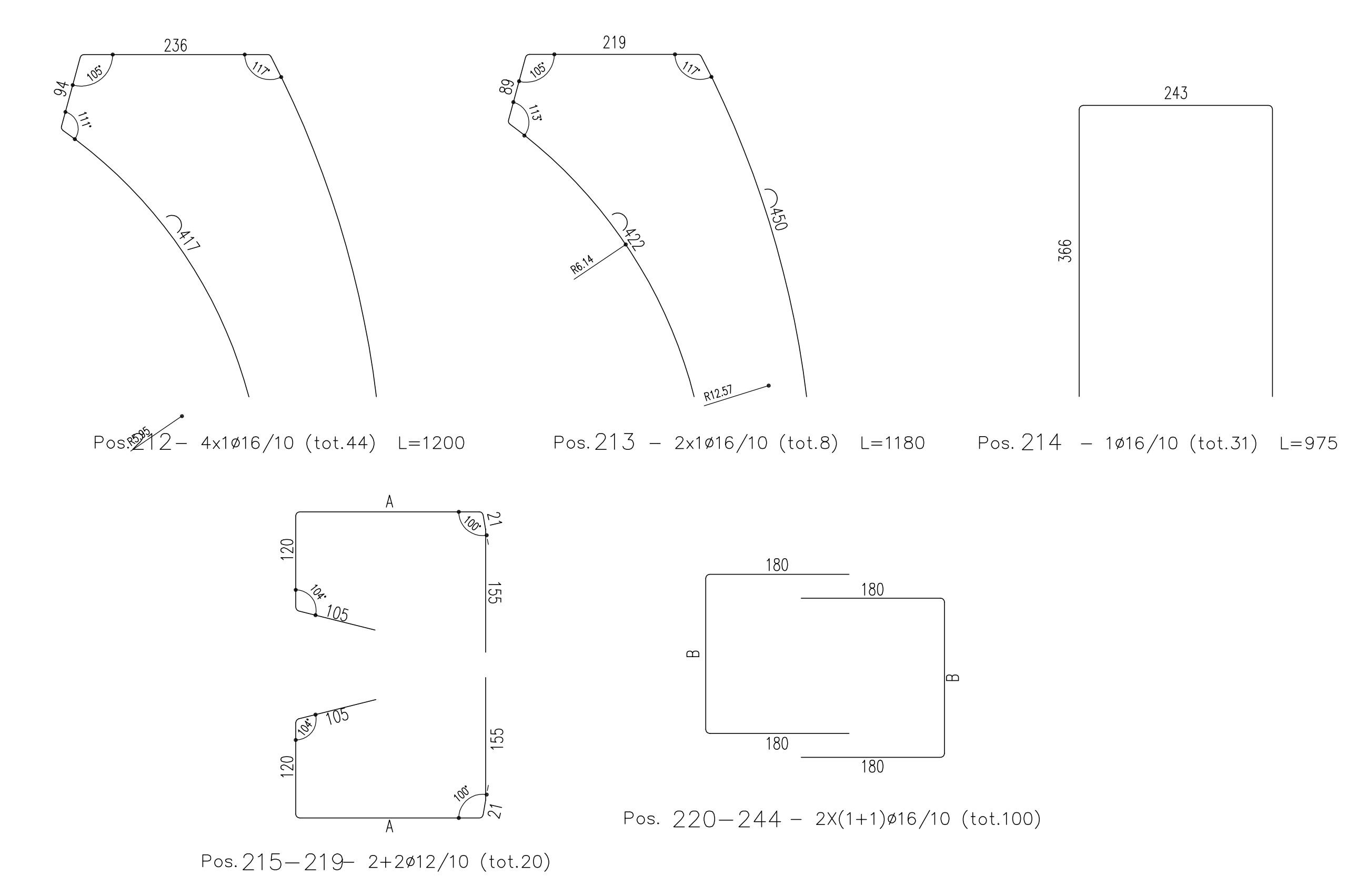
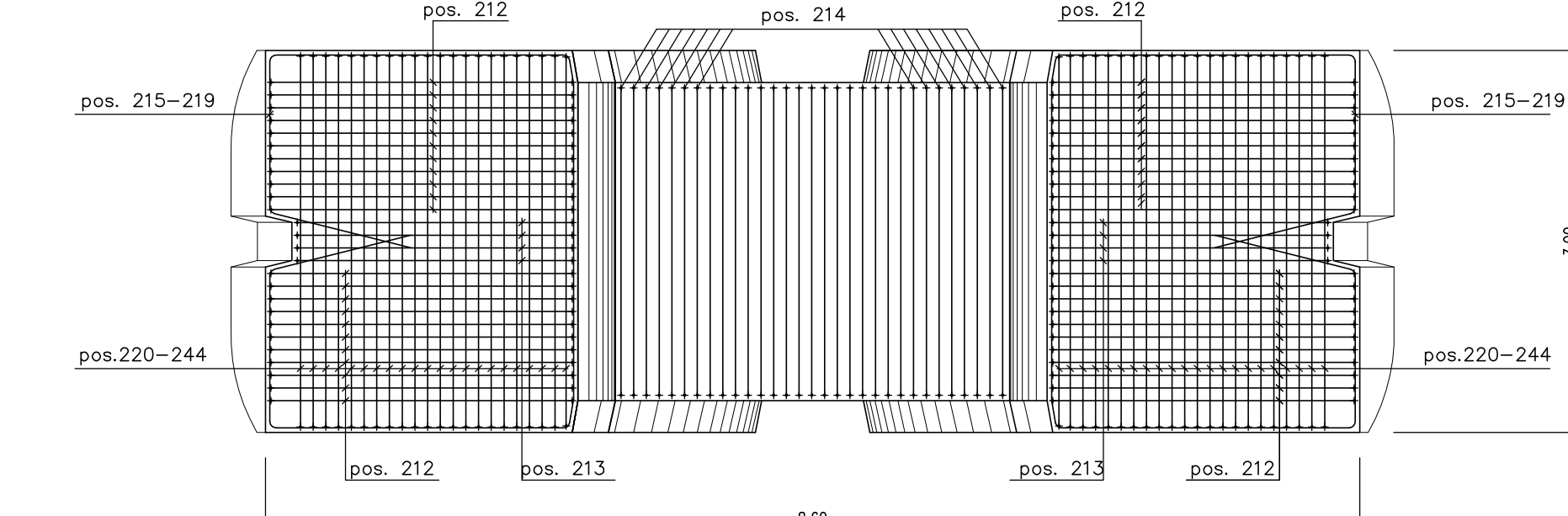


Table with 14 columns: Sagoma, Pos., ø (mm), nb, A (cm), B (cm), C (cm), D (cm), E (cm), L (m), Ltot (m). It lists reinforcement bar details for positions 214 to 244.

Table with 4 columns: ø (mm), M/L (kg/m), Ltot (m), Mtot (kg). It provides mass data for reinforcement bars of different diameters.

Table titled 'CARPENTERIA METALLICA' and 'CONGLOMERATO CEMENTIZIO'. It lists materials and their specifications for the project.

ARMATURE PER C.A. ACCORDO AD AGENZIA NAZIONALE CONTROLLATA IN STABILIMENTO AVENTE LE SEGUENTI CARATTERISTICHE: - Fdb844K SALDABILE PER ø ≤ 26 mm, etc.

NOTE: 1. Le barre sono da impiegare in senso longitudinale. 2. Le barre sono da impiegare in senso trasversale. 3. Le barre sono da impiegare in senso diagonale, etc.

Logo for ANAS S.p.A. and project information: PA 12/09 CORRIDOIO PLURIMODALE TIRRENICO - NORD EUROPA ITINERARISSETTA AGRIGENTO - CALTANISSETTA - A19.

Logo for E mpedocle and project information: OPERE D'ARTE MAGGIORI VIADOTTI ARMATURA PILA 2 CARREGGIATA DX - PULVINO E BAGGIOLI - tav. 2/2.

Table with project details: Codice Unico Progetto (CUP): F91B09000070001, Codice Elaborato: PA12_09 - E, and a grid of approval stamps.

Professional stamps of the project team: Ing. MAURIZIO ARAMINI (Projector), Ing. MAURIZIO MAURIZIO (Collaborator), and Ing. GIUSEPPE DI STEFANO (Geologist).