

VASCA - MURI AD 'U'												
TIPO	POS	NOTA	#	PASSO	A	B	C	D	L	N. Bar.	L.TOT	KG
				[cm]	[cm]	[cm]	[cm]	[cm]	[cm]		[cm]	
A	191 a	1	20	20	514	59	-	-	600	137	1200	2.026.15
A	191 b	1	20	20	334	86	-	-	420	137	875.40	1.418.30
A	192 a	1	20	20	334	116	-	-	420	137	936.60	1.531.61
A	192 b	1	20	20	514	116	-	-	630	137	883.10	2.127.96
A	193 a	1	20	20	924	38	-	-	1000	349	3000.00	3.189.94
A	193 b	1+1	20	20	924	38	-	-	950	349	3230.00	7.981.63
A	193 c	1+1	20	20	924	38	-	-	950	349	3230.00	7.981.63
F	194	1	20	80x40	31	89	42	-	280	2384	670320	18.522.72
E	195	1	10	20x40	19	5	28	14	60	6880	412800	2.543.78
E	196 a	1+1	20	20	1200	-	-	-	300	132	142400	2.769.10
C	196 b	1+1	16	20	1200	-	-	-	1200	88	105600	1.865.88
A	197 a	1	20	20	331	19	-	-	600	140	60000	3.951.02
C	197 b	1	20	20	1200	-	-	-	1200	88	105600	2.802.93
A	198 a	1	20	20	1200	-	-	-	1000	274	60000	13.984.55
C	198 b	1	20	20	1200	-	-	-	1200	88	331200	8.163.75
C	199 a	1+1	12	20	400	-	-	-	600	68	60000	4.465.86
A	199 b	1+1	12	20	171	19	-	-	190	178	34440	298.73
C	170 a	1+1	12	20	600	-	-	-	600	88	62880	468.63
B	170 b	1+1	12	20	111	19	70	-	260	178	42750	456.96
PESO TOTALE ARMATURA [kg]												79 352.87

VASCA - CORDOLI E COPERTURA												
TIPO	POS	NOTA	#	PASSO	A	B	C	D	L	N. Bar.	L.TOT	KG
				[cm]	[cm]	[cm]	[cm]	[cm]	[cm]		[cm]	
vedi disegno	171 a	1+1	20	20	330	177	-	-	610	254	151040	6.708.41
C	171 b	1+1	20	20	600	-	-	-	600	254	184400	6.588.44
A	172 a	1+1	20	20	400	298	-	-	330	132	43660	373.71
C	172 b	1	20	40	600	-	-	-	600	66	39600	976.10
A	172 c	1+1	20	20	207	60	-	-	370	294	97880	2.407.71
B	174 a	1+1	20	20	860	108	55	-	800	140	112000	4.685.96
C	174 b	2+2	20	20	988	32	-	-	800	78	21200	1.777.19
A	175 a	1	20	40	1200	-	-	-	1200	38	42000	1.035.26
A	176 a	1+1	20	20	907	63	-	-	1030	70	21100	3.003.48
B	177	1	16	40x80	19	72	19	-	2384	877	207328	32.705.92
vedi disegno	178 a	1	20	20	-	-	-	-	600	13	6000	134.17
B	178 b	1	20	20	-	-	-	-	600	10	6000	208.39
B	179 a	1	20	40	30	540	30	-	600	5	3000	73.95
B	179 b	1	20	40	31	158	31	-	1100	5	3000	221.11
B	180 a	1	20	20	60	540	60	-	660	10	6600	274.63
B	180 b	1	20	20	61	158	61	-	1000	10	6000	116.84
B	181	1	16	-	24	62	24	-	110	60	6600	104.12
vedi disegno	182 a	1	20	20	63	134	63	-	470	9	4200	176.31
A	182 b	2+2	20	20	63	667	-	-	730	36	26280	1.084.74
B	182 c	1+1	20	20	62	26	62	-	100	18	2700	112.47
vedi disegno	182 d	1	20	20	63	134	63	-	480	9	4320	179.96
B	182 e	1+1	20	20	62	26	62	-	100	18	2700	112.47
A	183 a	1	20	40	32	668	-	-	200	5	1000	248.65
B	183 b	1	20	40	33	134	33	-	200	5	1000	174.65
A	183 c	1+1	20	40	32	668	-	-	200	5	1000	248.65
C	183 d	1	20	40	1200	-	-	-	1200	5	6000	147.89
B	183 e	1	20	40	32	668	-	-	200	5	1000	113.20
B	183 f	1	20	40	33	144	33	-	210	5	1050	23.88
A	186	2+2	16	-	265	35	-	-	600	72	42000	681.88
B	186	1+1	16	-	265	35	-	-	600	72	42000	75.72
B	188	1+1	16	20	189	62	189	-	410	74	30340	478.62
B	189	1+1	16	20	61	168	61	-	1030	78	21960	322.93
B	190	1+1	16	20	41	168	41	-	250	74	18500	281.84
B	191	2+2	12	10	44	92	44	-	180	74	13320	118.20
A	192 a	1	16	-	1025	75	-	-	1100	38	39600	624.19
C	192 b	1	16	-	1200	-	-	-	1200	18	21600	342.35
A	193 a	1	16	-	995	35	-	-	1030	4	4120	64.99
A	193 b	1	16	-	1200	-	-	-	1200	2	2400	37.86
B	195	1+1	16	10	159	92	159	-	410	198	63860	1.008.99
B	196	1+1	16	10	60	170	60	-	300	156	49920	787.51
B	197	1+1	16	20	40	170	60	-	270	78	21960	332.93
C	198	2+2	12	40	44	92	44	-	180	39	7320	62.29
C	199 a	2+2	20	20	470	-	-	-	470	4	1880	46.34
C	199 b	2+2	20	20	350	-	-	-	350	4	1400	34.51
C	200 a	4+4	20	20	390	-	-	-	390	8	3120	76.86
C	200 b	2+2	20	20	400	-	-	-	400	4	1600	38.44
B	201	1+1	20	20	117	66	117	-	300	10	3000	73.95
vedi disegno	202 a	1	20	20	70	-	-	-	600	10	6000	208.28
B	203 a	1	20	40	32	158	32	-	660	5	3300	81.34
B	203 b	1	20	40	30	160	30	-	250	5	1100	271.11
B	204 a	1	20	20	60	598	60	-	720	10	7200	298.93
B	204 b	1	20	20	60	160	60	-	280	10	2800	116.64
A	205 a	1	20	20	63	134	63	-	250	13	3380	482.80
A	205 b	1	20	20	667	63	-	-	630	13	12090	303.63
C	205 c	1+1	20	20	1200	-	-	-	1200	13	18600	649.88
C	205 d	1	20	20	-	-	-	-	1180	13	15460	338.20
B	206 a	1	20	40	33	134	33	-	200	7	1400	34.51
B	206 b	1	20	40	32	668	-	-	600	7	4200	105.59
B	206 c	1	20	40	30	616	62	-	1010	7	7070	174.27
PESO TOTALE ARMATURA [kg]												77 193.32

VASCA - DIAFRAMMA TIPO F (H=14,50m)												
TIPO	POS	NOTA	#	PASSO	A	B	C	D	L	N. Bar.	L.TOT	KG
				[cm]	[cm]	[cm]	[cm]	[cm]	[cm]		[cm]	
C	211 a	68	20	1200	-	-	-	-	1200	68	81600	3.389.20
C	211 b	68	20	850	-	-	-	-	850	68	57800	2.407.76
D	212 a	1+1	12	10	160	86	21	8	650	182	100100	388.95
vedi disegno	3 a	1+1	20	-	23	334	53	-	440	20	8800	116.91
vedi disegno	3 b	1+1	20	-	64	162	54	-	360	20	7200	777.27
PESO TOTALE ARMATURA [kg]												77 193.32

TABELLA REPLICATIVA		
#	L.TOT	KG
[mm]	[cm]	
12	20340	180.49
16	203098	37.958.32
20	344710	8.436.76
28	134760	83.007.96
TOT (KG)		77 193.32

VASCA - DIAFRAMMA TIPO F (H=14,50m)												
TIPO	POS	NOTA	#	PASSO	A	B	C	D	L	N. Bar.	L.TOT	KG
				[cm]	[cm]	[cm]	[cm]	[cm]	[cm]		[cm]	
C	211 a	68	20	1200	-	-	-	-	1200	68	81600	3.389.20
C	211 b	68	20	850	-	-	-	-	850	68	57800	2.407.76
D	212 a	1+1	12	10	160	86	21	8	650	182	100100	388.95
vedi disegno	3 a	1+1	20	-	23	334	53	-	440	20	8800	116.91
vedi disegno	3 b	1+1	20	-	64	162	54	-	360	20	7200	777.27
PESO TOTALE ARMATURA [kg]												77 193.32

TABELLA REPLICATIVA		
#	L.TOT	KG
[mm]	[cm]	
12	147710	1.550.40
20	16000	384.38
28	134600	3.908.96
TOT (KG)		7 781.75

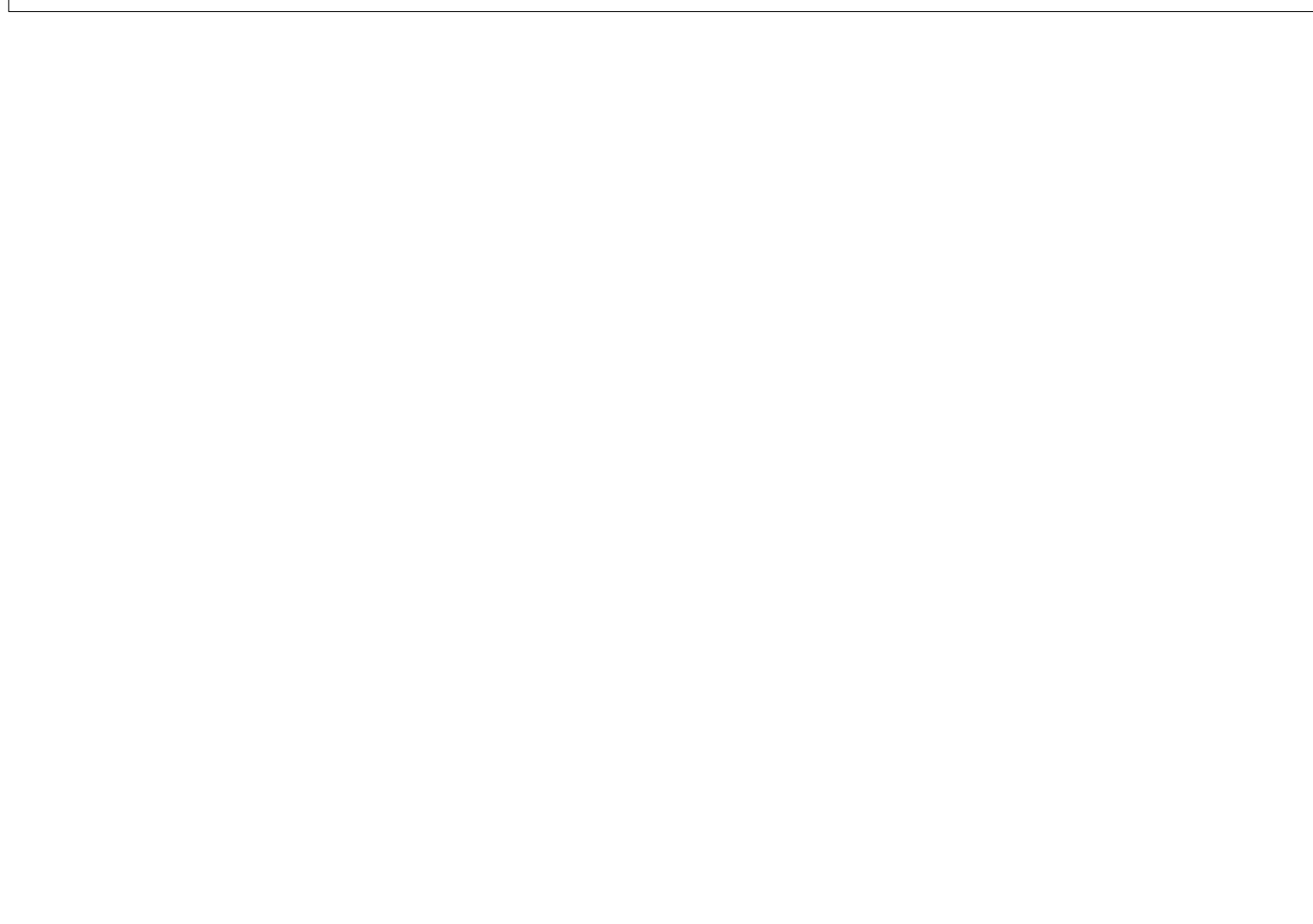
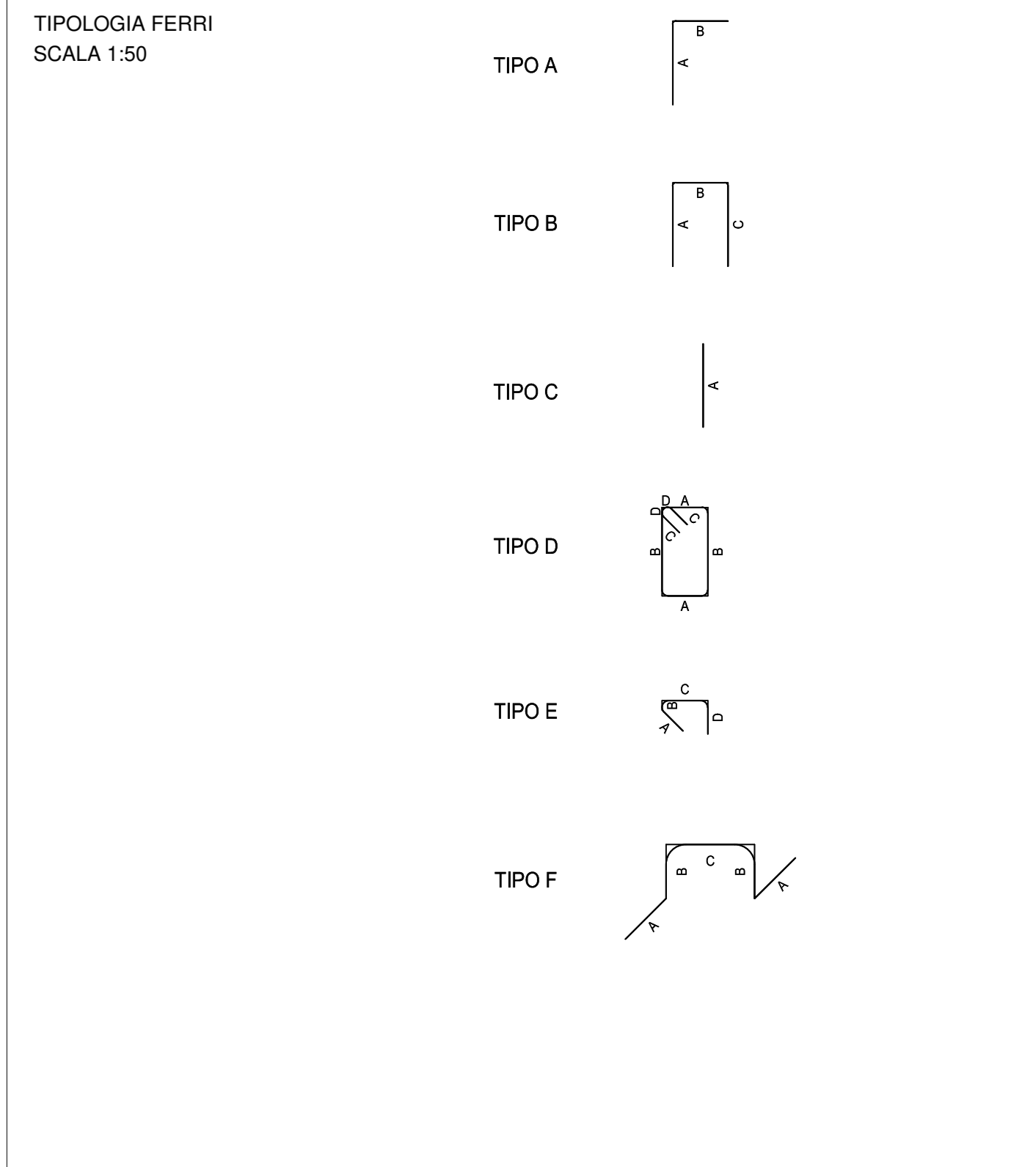
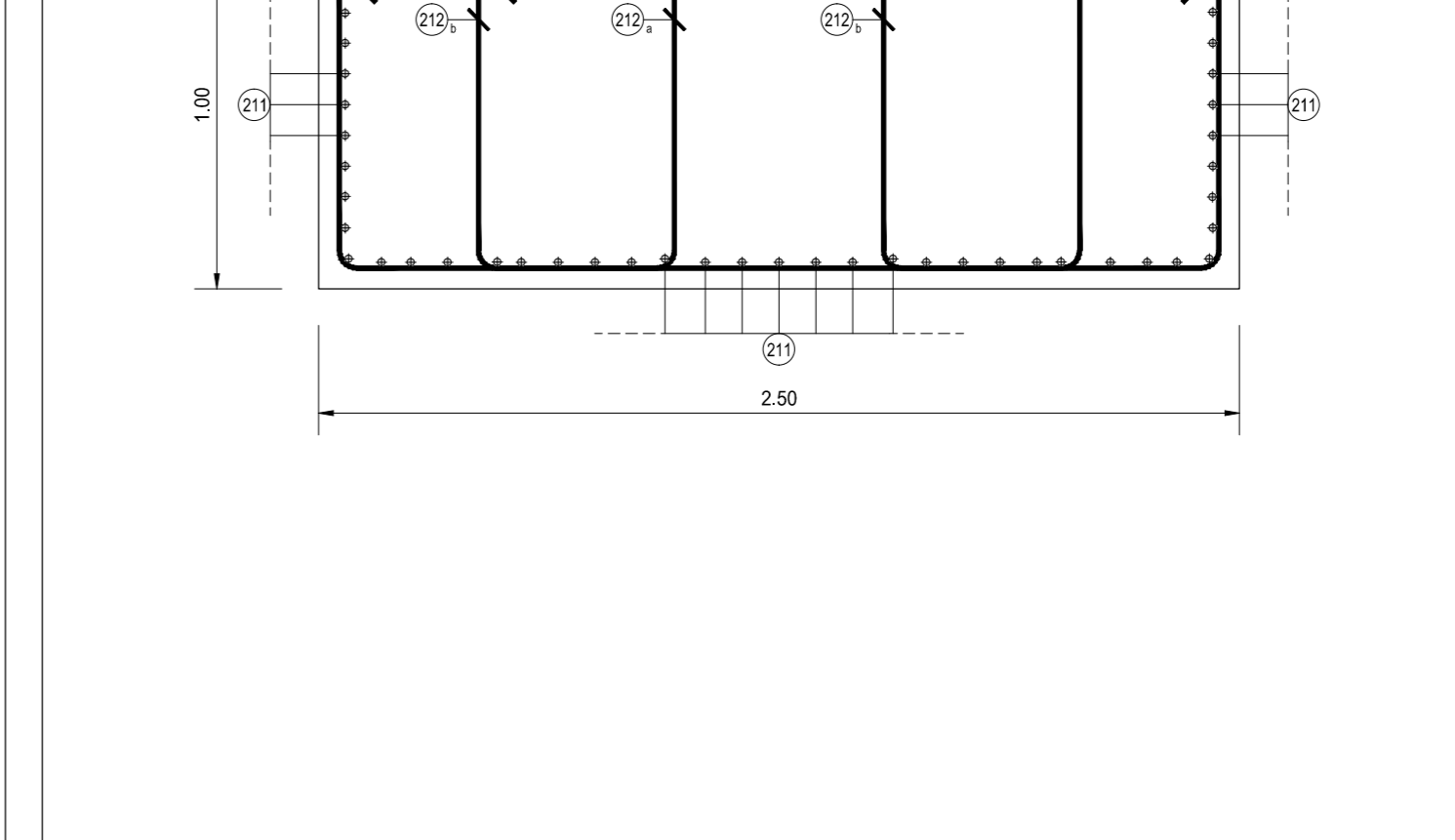
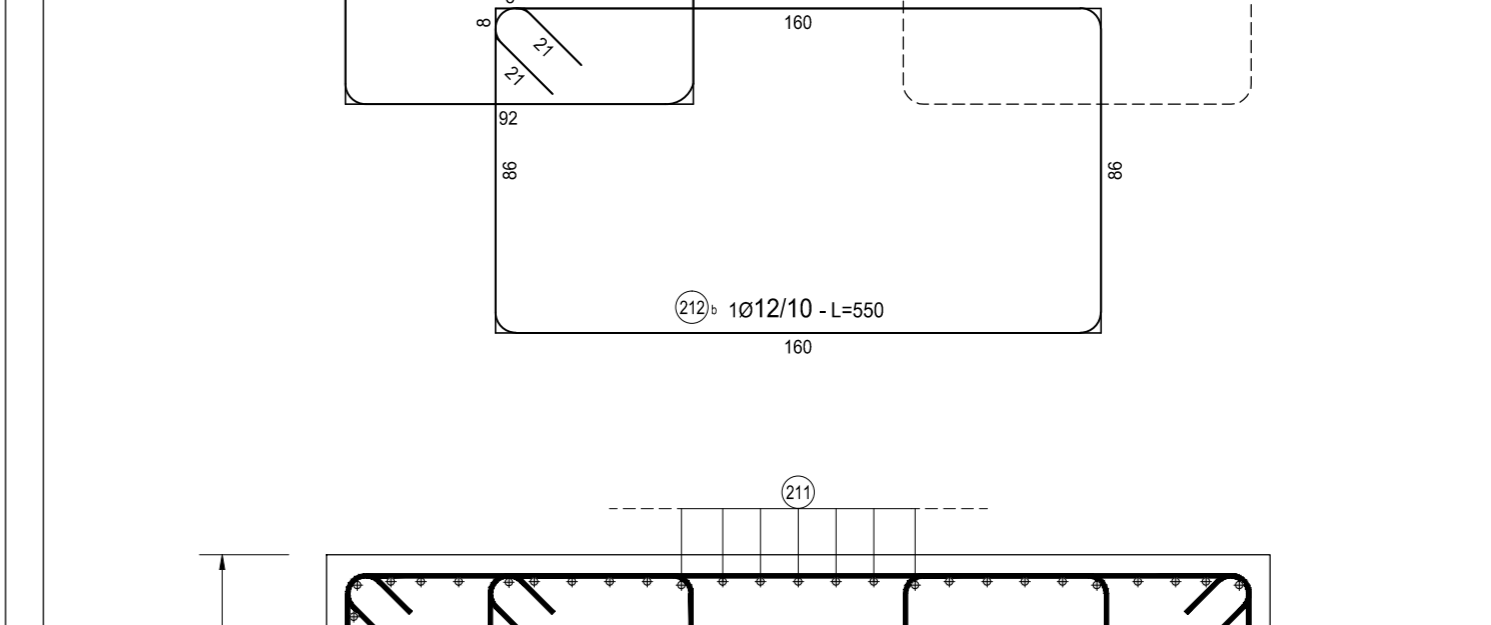


TABELLA REPLICATIVA		
#	L.TOT	KG
[mm]	[cm]	
12	20340	180.49
16	203098	37.958.32
20	344710	8.436.76
28	134760	83.007.96
TOT (KG)		77 193.32