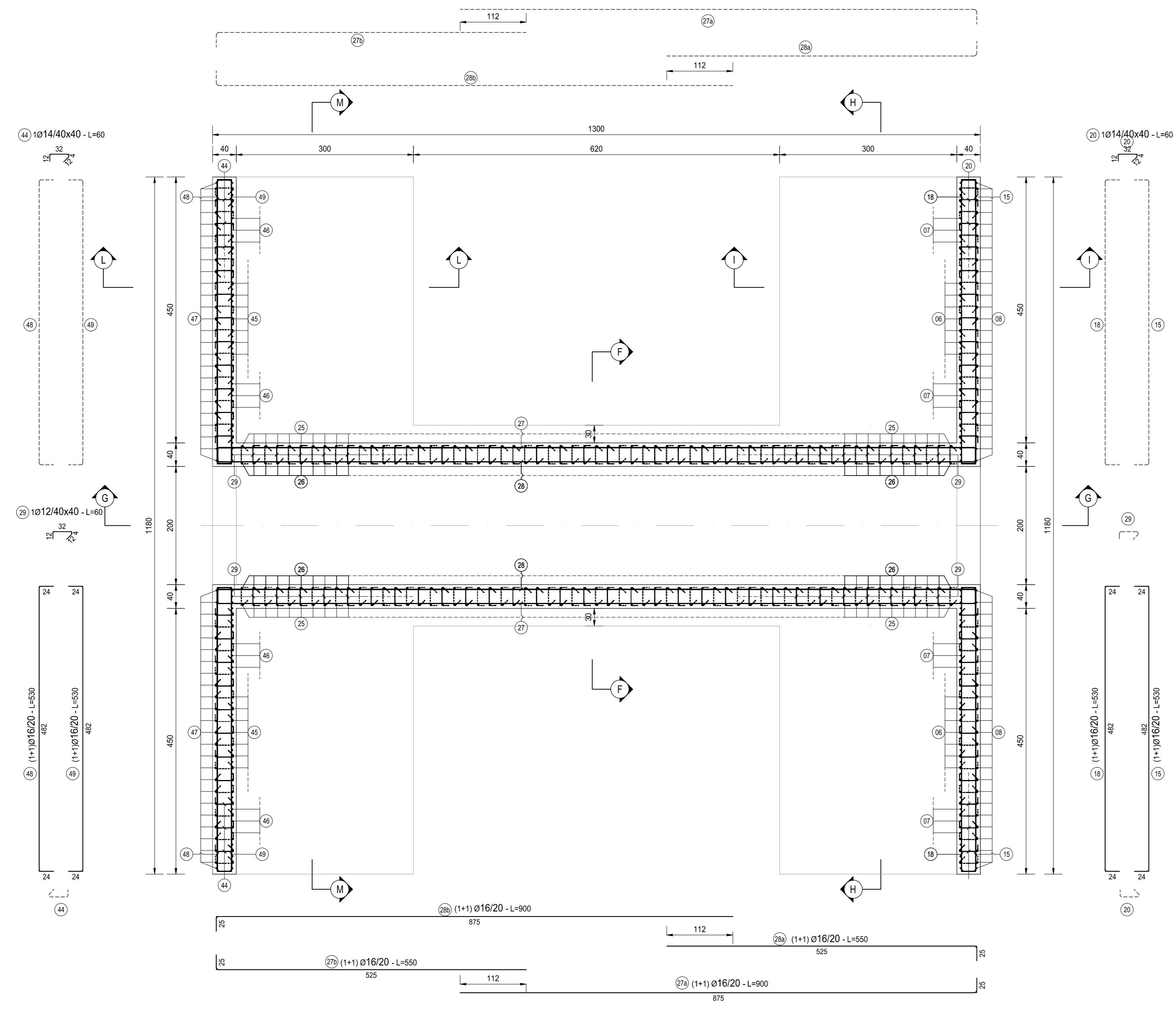
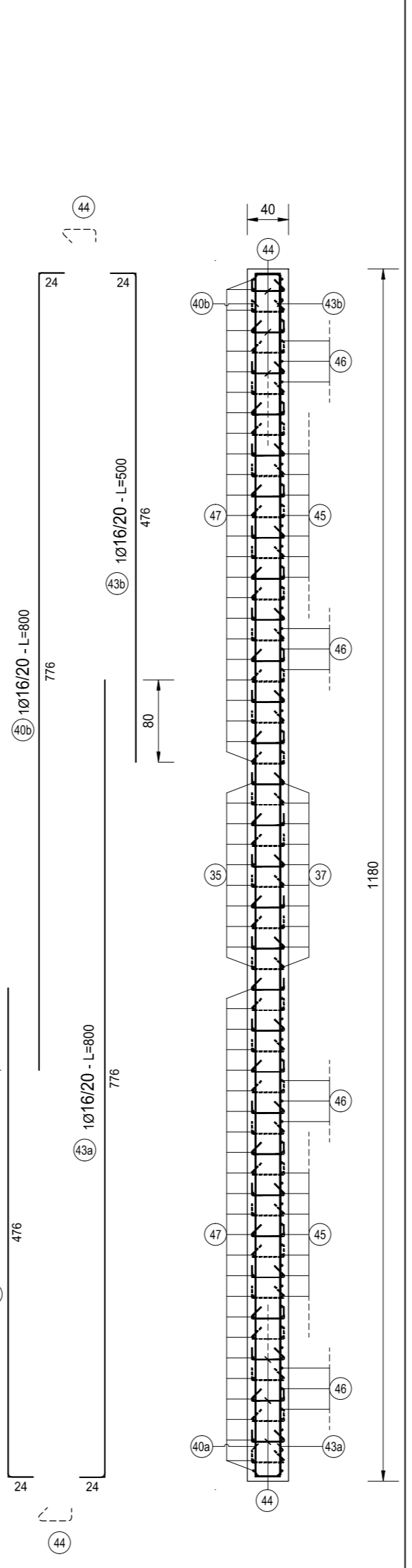


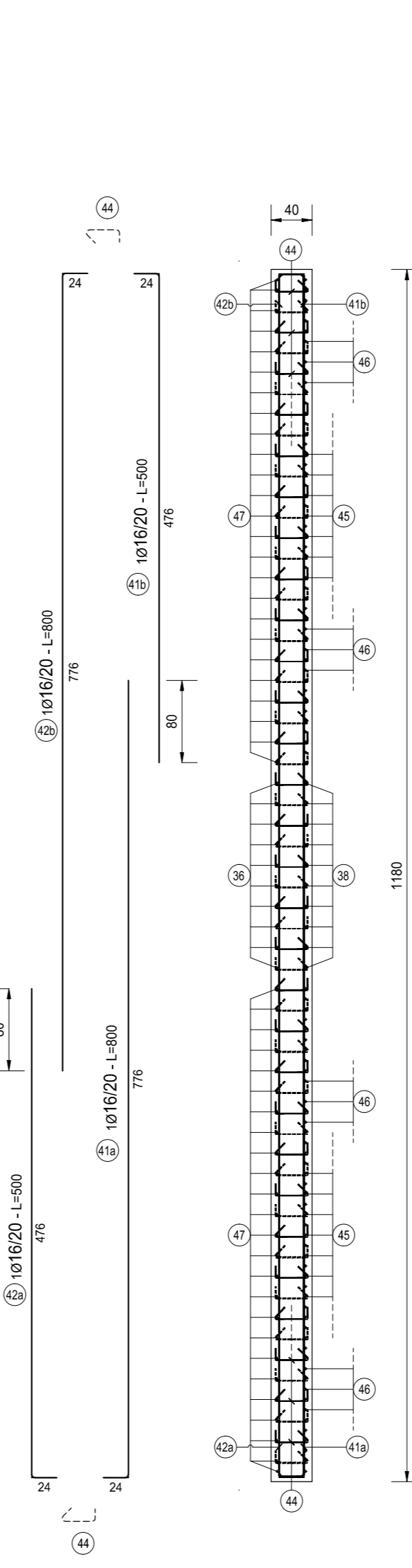
SEZIONE C-C
SCALA 1:50



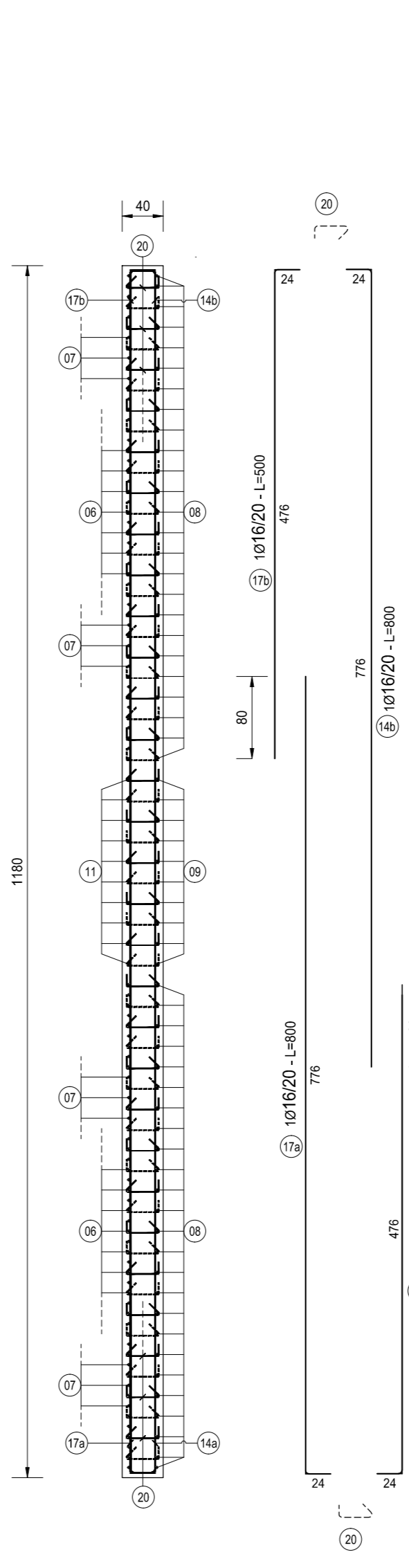
SEZIONE A-A
SCALA 1:50



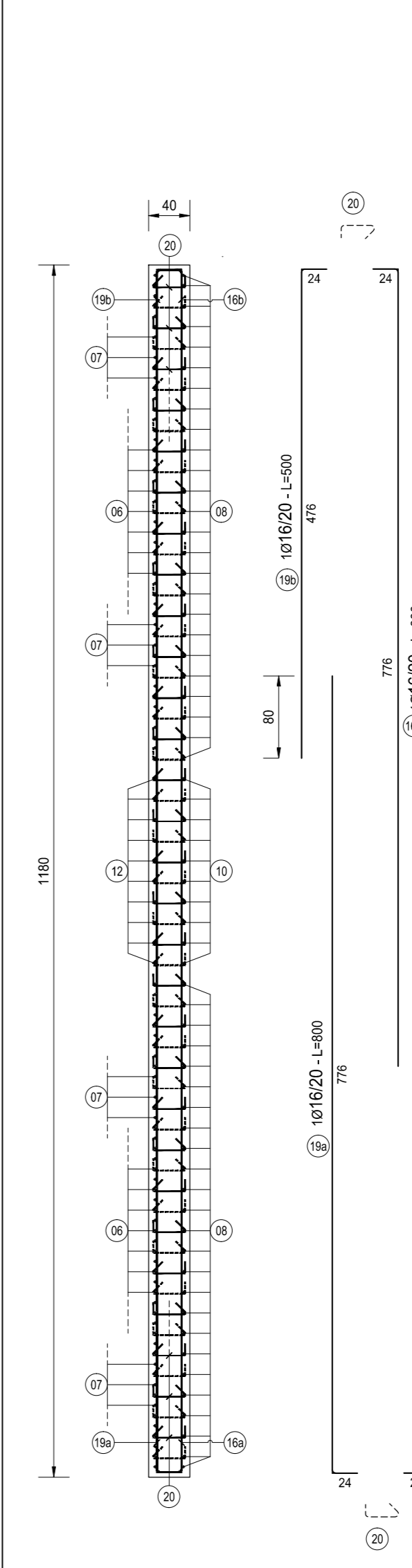
SEZIONE B-B
SCALA 1:50



SEZIONE D-D
SCALA 1:50



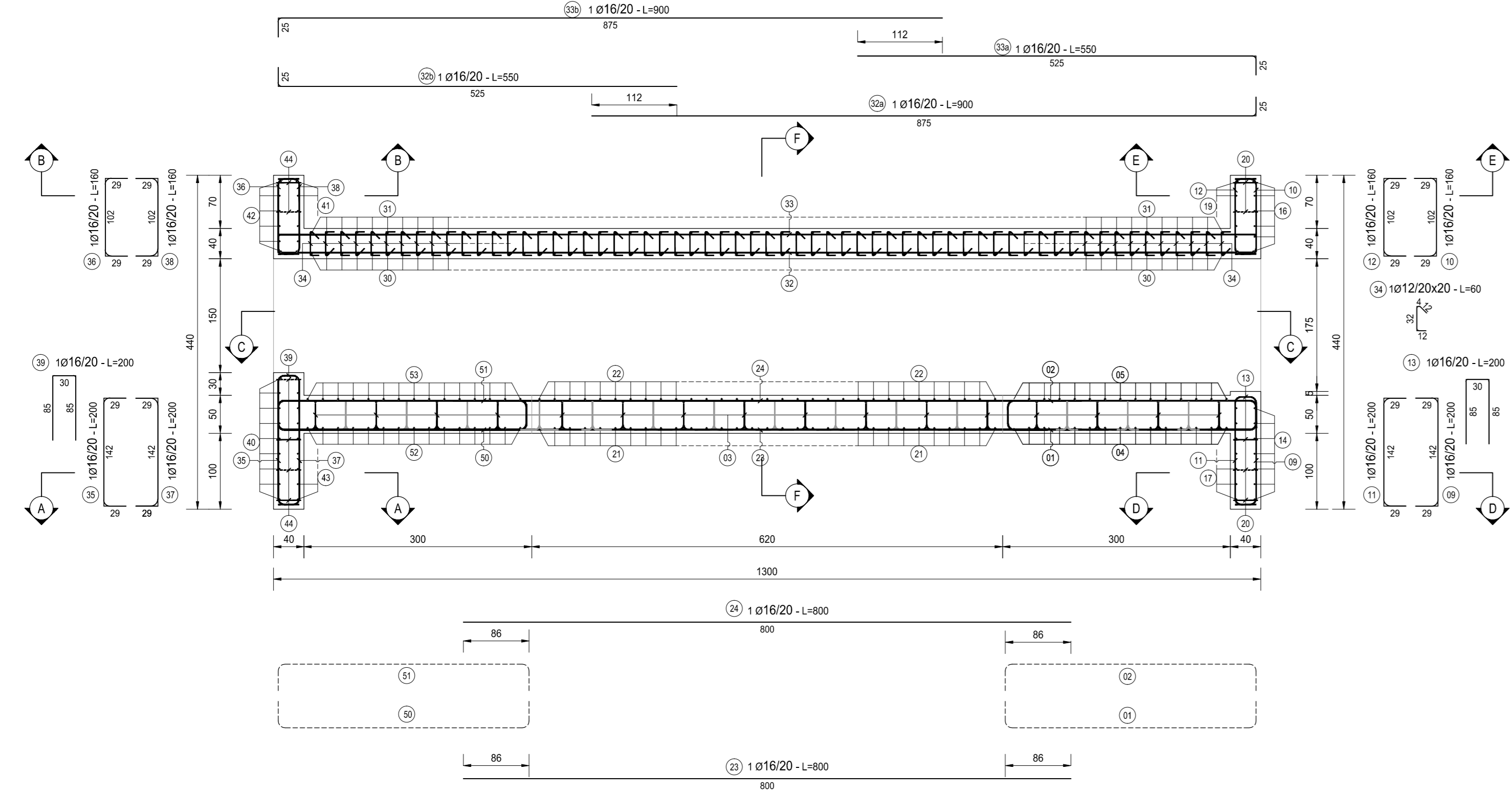
SEZIONE E-E
SCALA 1:50



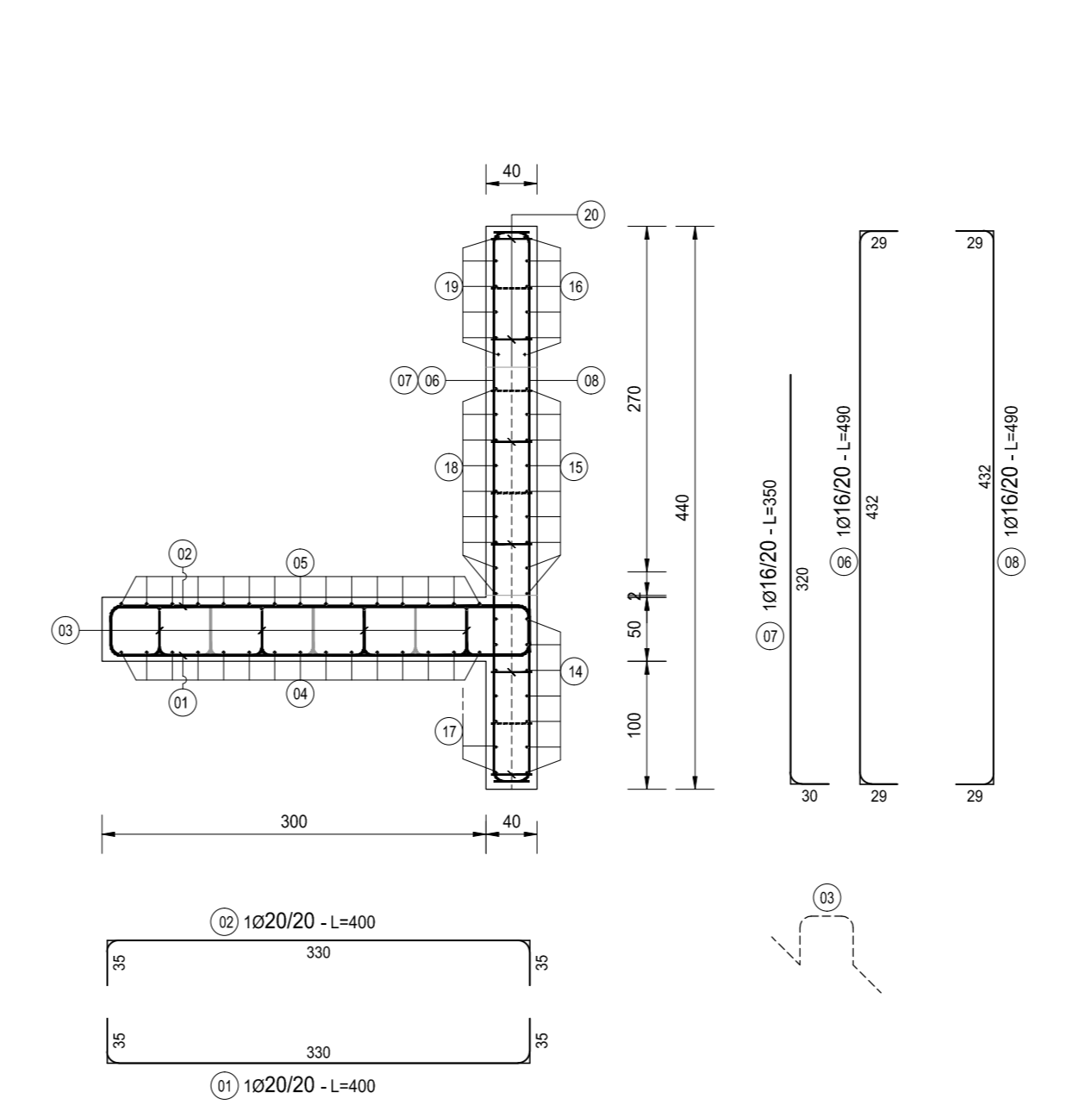
| TIPO | POS | NOTA | + | PASSO | A | B | C | D | L | N. BAR. | L.TOT | KG | |
|---------------------------|-----|------|-----|-------|-------|-----|-----|----|-----|---------|-------|-----------|--------|
| A | 4 | a | 1 | 20 | 20 | 442 | 38 | - | 480 | 15 | 13500 | 332.76 | |
| A | 4 | b | 1 | 20 | 20 | 442 | 38 | - | 480 | 15 | 7200 | 177.47 | |
| A | 5 | a | 1 | 20 | 20 | 862 | 38 | - | 900 | 15 | 13500 | 332.76 | |
| A | 7 | a | 1 | 16 | 20 | 320 | 30 | - | 350 | 48 | 16800 | 285.03 | |
| A | 14 | a | 1 | 16 | 20 | 476 | 24 | - | 500 | 7 | 3500 | 85.21 | |
| A | 14 | b | 1 | 16 | 20 | 476 | 24 | - | 500 | 7 | 3500 | 85.21 | |
| A | 16 | a | 1 | 16 | 20 | 476 | 24 | - | 500 | 6 | 3000 | 47.33 | |
| A | 16 | b | 1 | 16 | 20 | 476 | 24 | - | 500 | 6 | 3000 | 47.33 | |
| A | 17 | a | 1 | 16 | 20 | 476 | 24 | - | 500 | 7 | 3500 | 85.21 | |
| A | 17 | b | 1 | 16 | 20 | 476 | 24 | - | 500 | 7 | 3500 | 85.21 | |
| A | 19 | a | 1 | 16 | 20 | 476 | 24 | - | 500 | 6 | 3000 | 47.33 | |
| A | 27 | a | 1+1 | 16 | 20 | 876 | 25 | - | 900 | 18 | 16200 | 285.03 | |
| A | 27 | b | 1+1 | 16 | 20 | 876 | 25 | - | 900 | 18 | 9000 | 156.18 | |
| A | 28 | a | 1+1 | 16 | 20 | 525 | 25 | - | 550 | 18 | 9900 | 156.18 | |
| A | 28 | b | 1+1 | 16 | 20 | 525 | 25 | - | 550 | 18 | 13200 | 212.97 | |
| A | 32 | a | 1 | 16 | 20 | 875 | 25 | - | 900 | 15 | 13500 | 212.97 | |
| A | 32 | b | 1 | 16 | 20 | 875 | 25 | - | 900 | 15 | 8250 | 130.15 | |
| A | 33 | a | 1 | 16 | 20 | 875 | 25 | - | 900 | 15 | 13200 | 212.97 | |
| A | 33 | b | 1 | 16 | 20 | 875 | 25 | - | 900 | 15 | 13500 | 212.97 | |
| A | 40 | a | 1 | 16 | 20 | 24 | 476 | - | 500 | 9 | 4500 | 70.59 | |
| A | 40 | b | 1 | 16 | 20 | 24 | 476 | - | 500 | 9 | 7200 | 113.58 | |
| A | 41 | a | 1 | 16 | 20 | 24 | 476 | - | 500 | 6 | 4800 | 75.72 | |
| A | 41 | b | 1 | 16 | 20 | 24 | 476 | - | 500 | 6 | 3000 | 47.33 | |
| A | 42 | a | 1 | 16 | 20 | 476 | 24 | - | 500 | 6 | 3000 | 47.33 | |
| A | 42 | b | 1 | 16 | 20 | 476 | 24 | - | 500 | 6 | 4800 | 75.72 | |
| A | 43 | a | 1 | 16 | 20 | 476 | 24 | - | 500 | 9 | 7200 | 113.58 | |
| A | 43 | b | 1 | 16 | 20 | 476 | 24 | - | 500 | 9 | 4500 | 70.59 | |
| A | 46 | a | 1 | 16 | 20 | 320 | 30 | - | 350 | 48 | 16800 | 285.03 | |
| A | 46 | b | 1 | 16 | 20 | 320 | 30 | - | 350 | 48 | 13500 | 212.97 | |
| A | 52 | a | 1 | 20 | 20 | 442 | 38 | - | 480 | 15 | 7200 | 177.47 | |
| A | 52 | b | 1 | 20 | 20 | 442 | 38 | - | 480 | 15 | 7200 | 177.47 | |
| A | 53 | a | 1 | 20 | 20 | 862 | 38 | - | 900 | 15 | 13500 | 332.76 | |
| A | 53 | b | 1 | 20 | 20 | 862 | 38 | - | 900 | 15 | 13500 | 332.76 | |
| B | 1 | 1 | 1 | 20 | 20 | 35 | 330 | 35 | 400 | 59 | 23600 | 581.72 | |
| B | 2 | 1 | 1 | 20 | 20 | 35 | 330 | 35 | 400 | 59 | 23600 | 581.72 | |
| B | 5 | 1 | 1 | 16 | 20 | 29 | 432 | 29 | 490 | 50 | 24500 | 386.50 | |
| B | 8 | 1 | 1 | 16 | 20 | 29 | 432 | 29 | 490 | 50 | 24500 | 386.50 | |
| B | 9 | 1 | 1 | 16 | 20 | 29 | 142 | 29 | 200 | 10 | 2000 | 31.55 | |
| B | 10 | 1 | 1 | 16 | 20 | 29 | 142 | 29 | 200 | 10 | 1600 | 25.24 | |
| B | 11 | 1 | 1 | 16 | 20 | 29 | 142 | 29 | 200 | 10 | 2000 | 31.55 | |
| B | 12 | 1 | 1 | 16 | 20 | 29 | 102 | 29 | 160 | 10 | 1600 | 25.24 | |
| B | 13 | 1 | 1 | 16 | 20 | 85 | 30 | 85 | 200 | 10 | 2000 | 31.55 | |
| B | 15 | 1+1 | 1 | 16 | 20 | 24 | 482 | 24 | 530 | 16 | 8480 | 133.78 | |
| B | 15 | 2+2 | 1 | 16 | 20 | 24 | 482 | 24 | 530 | 16 | 8480 | 133.78 | |
| B | 18 | 1+1 | 1 | 16 | 20 | 35 | 330 | 35 | 400 | 59 | 23600 | 581.72 | |
| B | 18 | 2+2 | 1 | 16 | 20 | 35 | 330 | 35 | 400 | 59 | 23600 | 581.72 | |
| B | 21 | 1 | 1 | 20 | 20 | 34 | 332 | 34 | 400 | 31 | 12400 | 305.65 | |
| B | 21 | 2 | 1 | 20 | 20 | 34 | 332 | 34 | 400 | 31 | 12400 | 305.65 | |
| B | 25 | 1+1 | 1 | 20 | 20 | 61 | 259 | 30 | 350 | 122 | 42700 | 1062.51 | |
| B | 26 | 1+1 | 1 | 20 | 20 | 61 | 259 | 30 | 350 | 122 | 42700 | 1062.51 | |
| B | 30 | 1 | 1 | 20 | 20 | 30 | 270 | 30 | 330 | 61 | 20150 | 496.19 | |
| B | 31 | 1 | 1 | 20 | 20 | 65 | 270 | 65 | 400 | 61 | 24400 | 601.44 | |
| B | 35 | 1 | 1 | 20 | 20 | 29 | 142 | 29 | 200 | 10 | 2000 | 31.55 | |
| B | 36 | 1 | 1 | 16 | 20 | 29 | 102 | 29 | 160 | 10 | 1600 | 25.24 | |
| B | 37 | 1 | 1 | 16 | 20 | 29 | 142 | 29 | 200 | 10 | 2000 | 31.55 | |
| B | 38 | 1 | 1 | 16 | 20 | 29 | 102 | 29 | 160 | 10 | 1600 | 25.24 | |
| B | 39 | 1 | 1 | 16 | 20 | 85 | 30 | 85 | 200 | 10 | 2000 | 31.55 | |
| B | 40 | 1 | 1 | 16 | 20 | 29 | 432 | 29 | 490 | 50 | 24500 | 386.50 | |
| B | 41 | 1 | 1 | 16 | 20 | 29 | 432 | 29 | 490 | 50 | 24500 | 386.50 | |
| B | 48 | 1+1 | 1 | 16 | 20 | 24 | 482 | 24 | 530 | 16 | 8480 | 133.78 | |
| B | 48 | 2+2 | 1 | 16 | 20 | 24 | 482 | 24 | 530 | 16 | 8480 | 133.78 | |
| B | 50 | 1 | 1 | 20 | 20 | 35 | 330 | 35 | 400 | 59 | 23600 | 581.72 | |
| B | 51 | 1 | 1 | 20 | 20 | 35 | 330 | 35 | 400 | 59 | 23600 | 581.72 | |
| C | 23 | 1 | 1 | 16 | 20 | 800 | - | - | 800 | 17 | 13600 | 214.54 | |
| C | 24 | 1 | 1 | 16 | 20 | 800 | - | - | 800 | 17 | 13600 | 214.54 | |
| E | 20 | 1 | 1 | 14 | 40x40 | 12 | 4 | 32 | 12 | 60 | 284 | 17040 | 205.61 |
| E | 29 | 1 | 1 | 12 | 40x40 | 12 | 4 | 32 | 12 | 60 | 310 | 18600 | 195.00 |
| E | 34 | 1 | 1 | 12 | 20x20 | 12 | 4 | 32 | 12 | 60 | 671 | 40260 | 357.25 |
| E | 44 | 1 | 1 | 14 | 40x40 | 12 | 4 | 32 | 12 | 60 | 284 | 17040 | 205.61 |
| F | 31 | 1 | 1 | 16 | 80x40 | 31 | 38 | 42 | - | 190 | 290 | 45800 | 736.29 |
| PESO TOTALE ARMATURA (kg) | | | | | | | | | | | | 15.876.04 | |

| TABELLA RIPILOGATIVA ELEMENTI | | TABELLA RIPILOGATIVA DIAMETRI | |
|-------------------------------|------------|-------------------------------|------------|
| ELEMENTO | L.TOT (mm) | + | L.TOT (mm) |
| FONDAZIONE | 329600 | 6992.03 | 0.00 |
| ELEVAZIONE | 523819 | 8884.00 | 411.62 |
| TOT (KG) | | 15876.04 | |

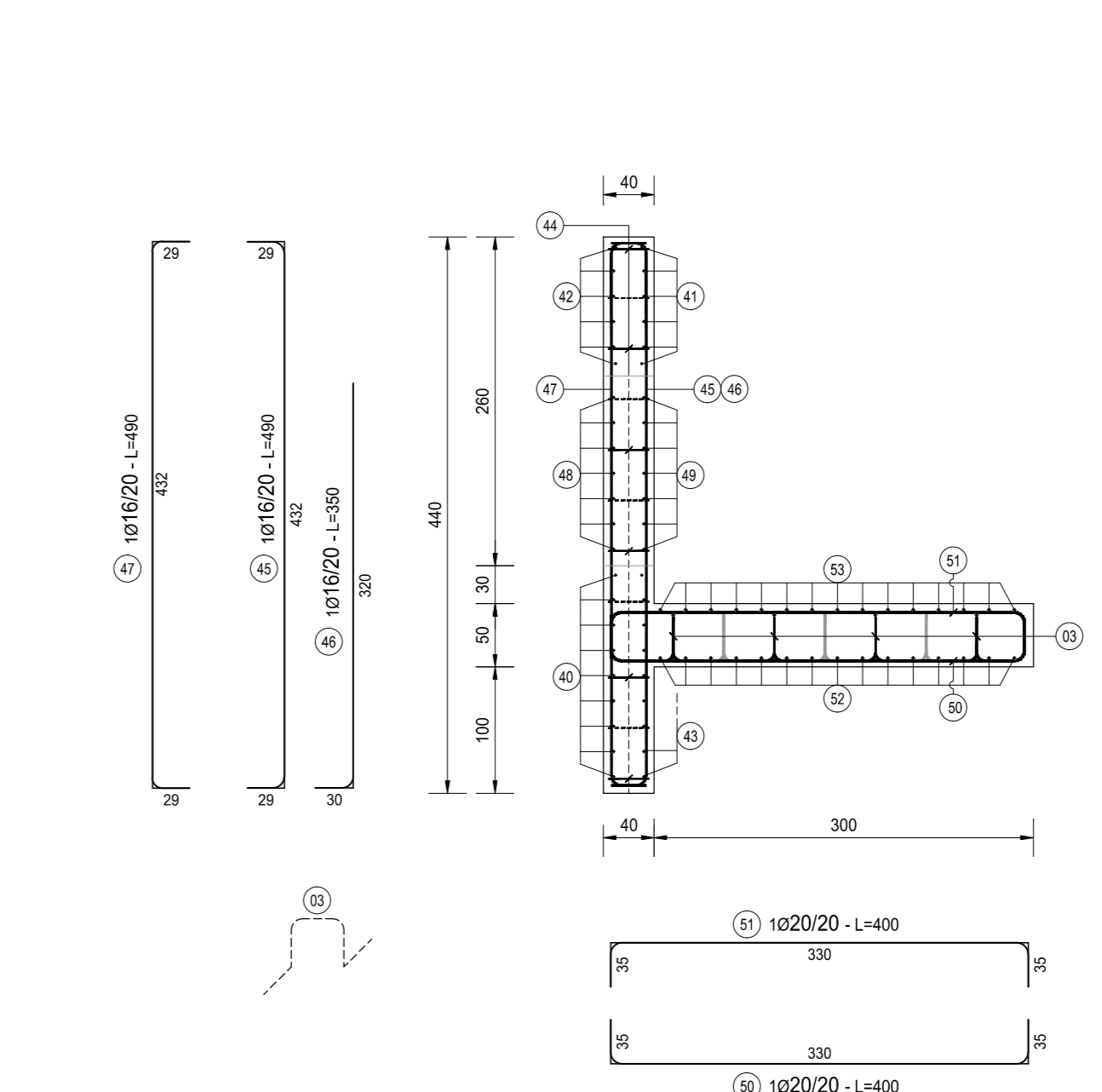
SEZIONE G-G
SCALA 1:50



SEZIONE I-I
SCALA 1:50



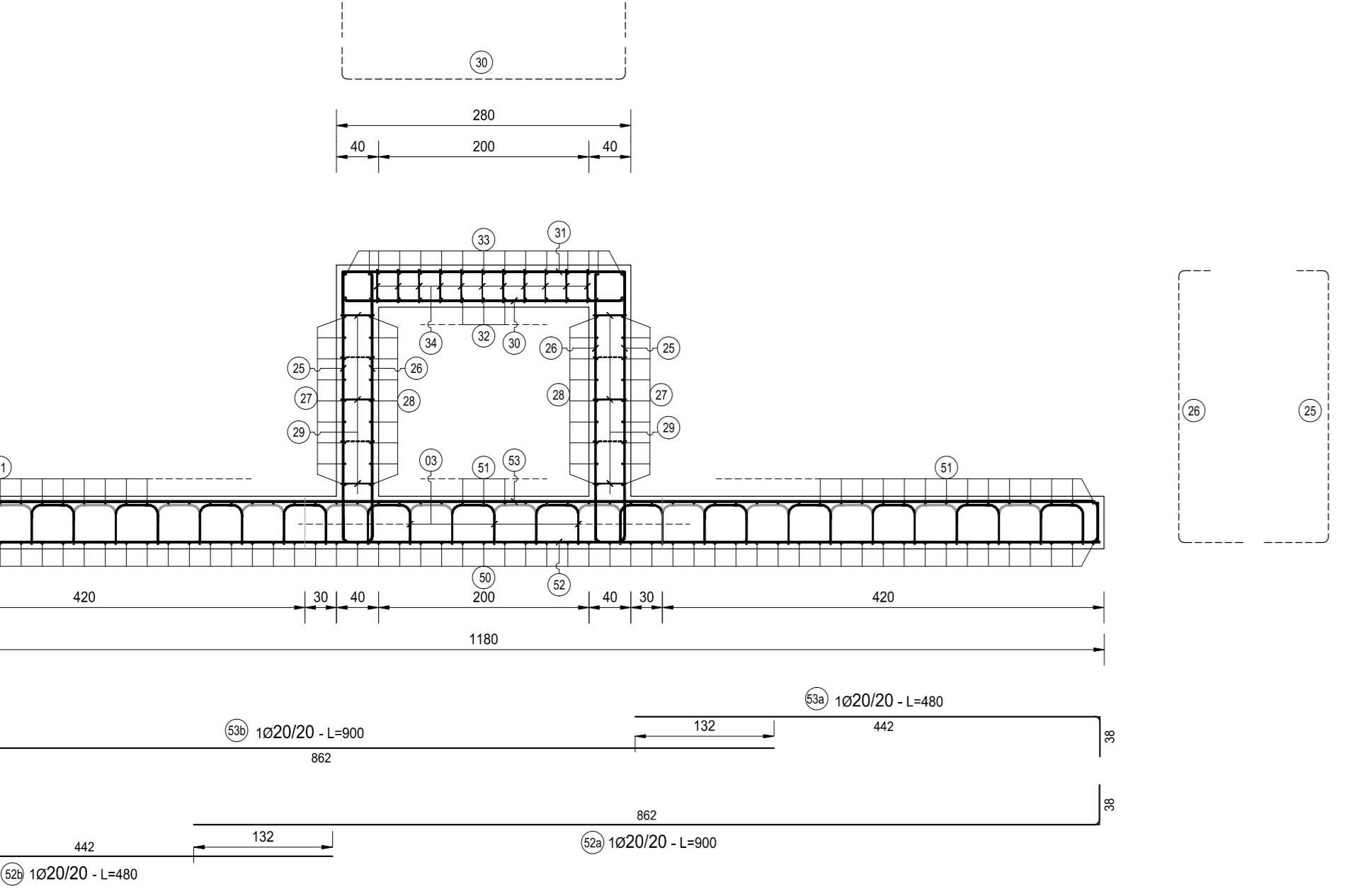
SEZIONE L-L
SCALA 1:50



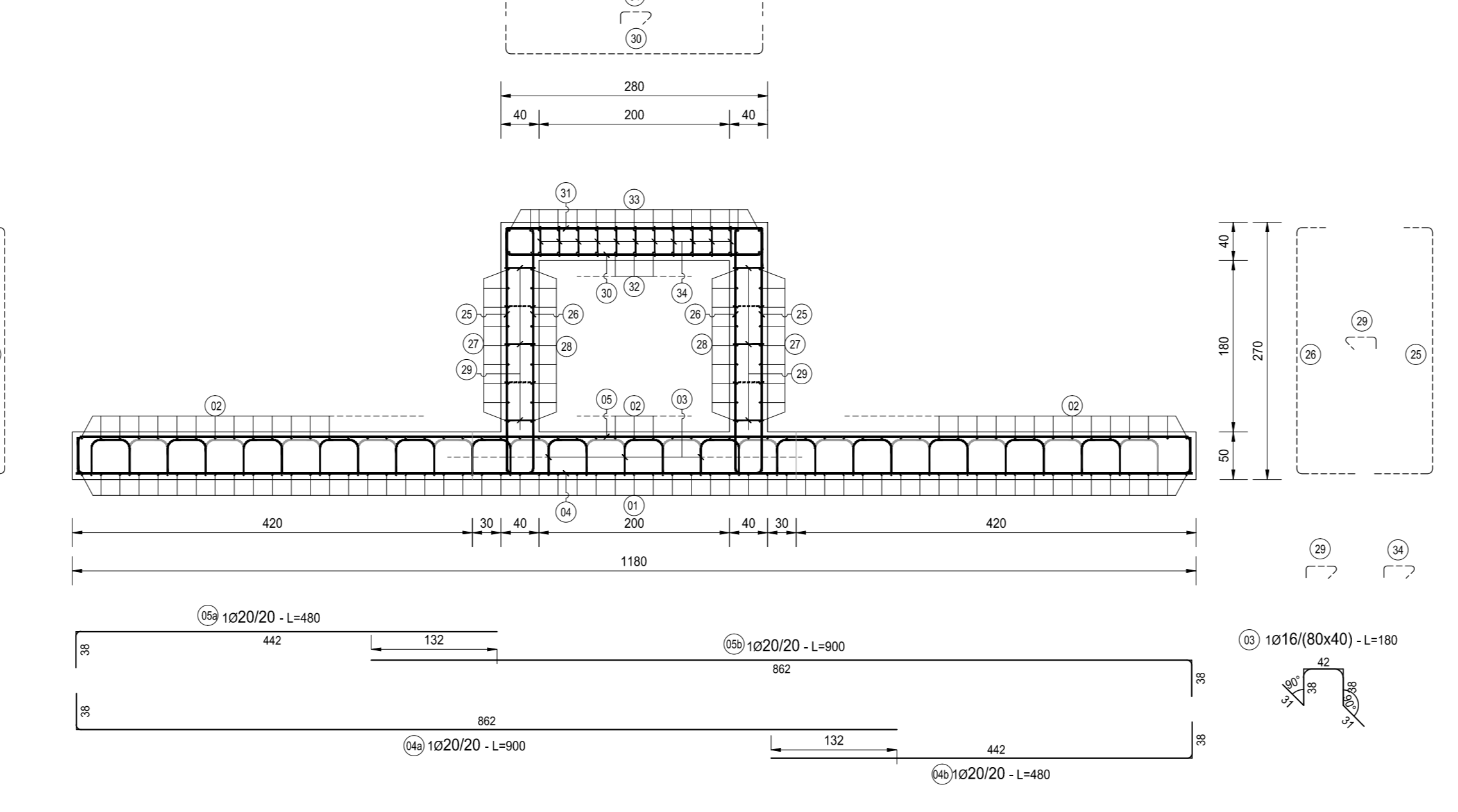
TIPOLOGIA FERRI
SCALA 1:50

NOTA BENE:
PER LA TABELLA MATERIALI SI RINVIA ALL'ALLEGATO LA17-T00TM00STRSC01

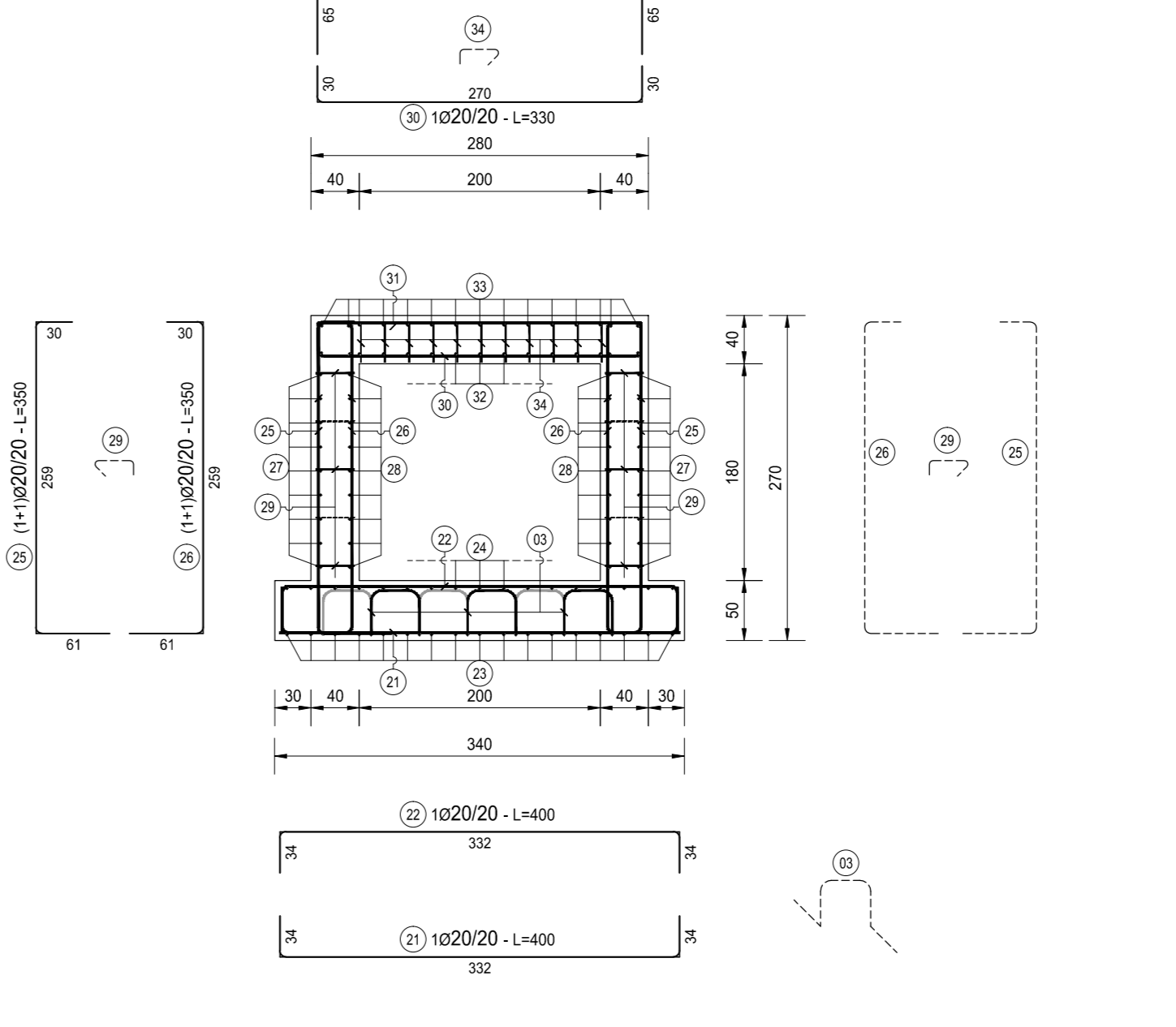
SEZIONE M-M
SCALA 1:50



SEZIONE H-H
SCALA 1:50



SEZIONE F-F
SCALA 1:50



ANAS S.p.A.
Direzione Progettazione e Realizzazione Lavori

S.S. N. 9 "VIA EMILIA"
VARIANTE DI CASALPUSTERLENGO ED ELIMINAZIONE
PASSAGGIO A LIVELLO SULLA S.P. EX S.S. N.234
PROGETTO ESECUTIVO

| | | | |
|------------------------|---------------------------|-----------------------|--------------------|
| ING. RENATO DEL PRETE | DOTT. GEOL. DANIELO GALLO | ING. VALERIO BAILETTI | ING. DANIELO GALLO |
| ING. ROBERTO DEL PRETE | DOTT. DOTT. CARLO GIULIO | ING. VALERIO BAILETTI | ING. DANIELO GALLO |
| ING. VALERIO BAILETTI | ING. GIANFRANCO SODERO | ING. DANIELO GALLO | ING. DANIELO GALLO |
| ING. DANIELO GALLO | ING. DANIELO GALLO | ING. DANIELO GALLO | ING. DANIELO GALLO |
| ING. DANIELO GALLO | ING. DANIELO GALLO | ING. DANIELO GALLO | ING. DANIELO GALLO |
| ING. DANIELO GALLO | ING. DANIELO GALLO | ING. DANIELO GALLO | ING. DANIELO GALLO |
| ING. DANIELO GALLO | ING. DANIELO GALLO | ING. DANIELO GALLO | ING. DANIELO GALLO |
| ING. DANIELO GALLO | ING. DANIELO GALLO | ING. DANIELO GALLO | ING. DANIELO GALLO |
| ING. DANIELO GALLO | ING. DANIELO GALLO | ING. DANIELO GALLO | ING. DANIELO GALLO |
| ING. DANIELO GALLO | ING. DANIELO GALLO | ING. DANIELO GALLO | ING. DANIELO GALLO |

VISTO IL RESPONSABILE DELLA INTERGRAZIONE DELLE SPECIALISTICHE

PROGETTISTA
ING. DANIELO GALLO

COORDINATORE DELLA SICUREZZA IN FASE DI PROGETTAZIONE
ING. DANIELO GALLO

L493
TM83- TOMBINO 200X180 ALLA PROG. KM 6+880

ARMATURA

CODICE PROGETTO: COMI E 17/01
NOME FILE: L493-V05TM83STRAR01_A.dwg
REVISIONE: A
SCALA: 1:50

EMMISSIONE: GIUGNO 2014
REDAZIONE: ING. GIUSEPPE LUISI MONTERISI
VERIFICAZIONE: ING. VALERIO BAILETTI
APPROVATO: ING. VALERIO BAILETTI