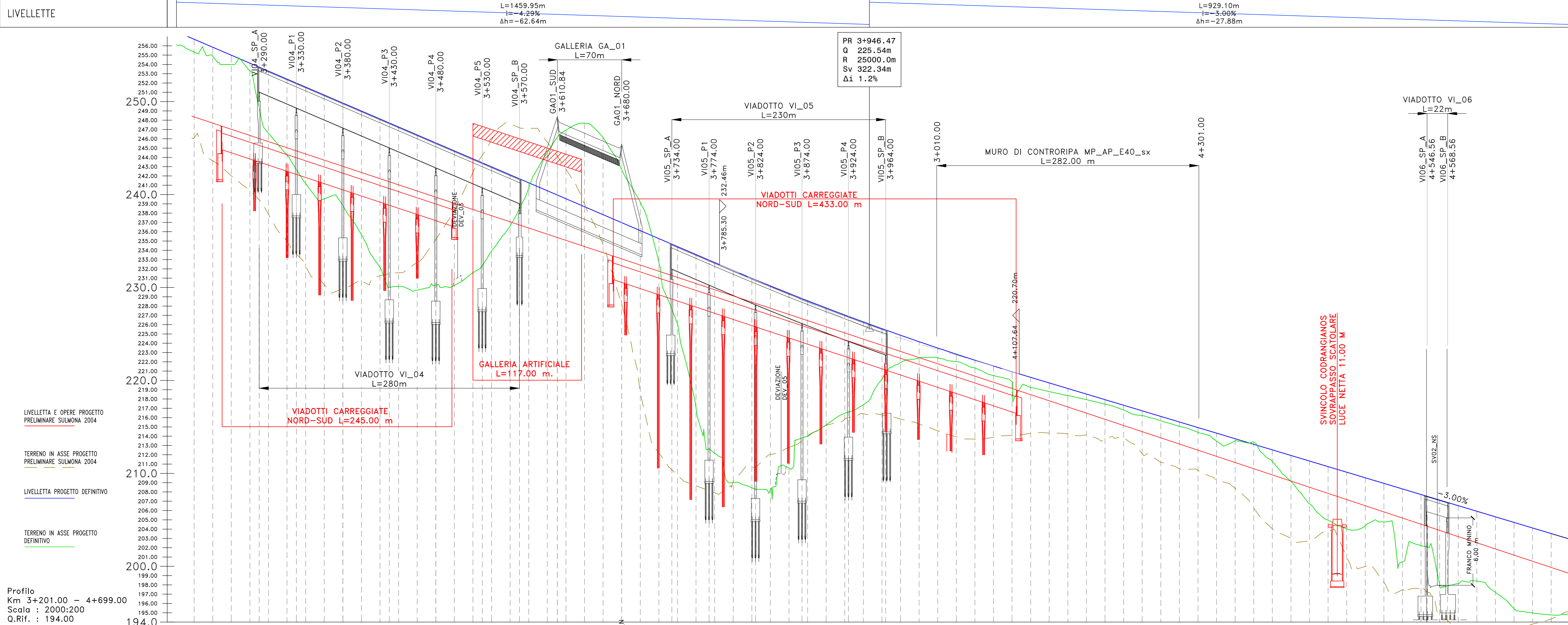
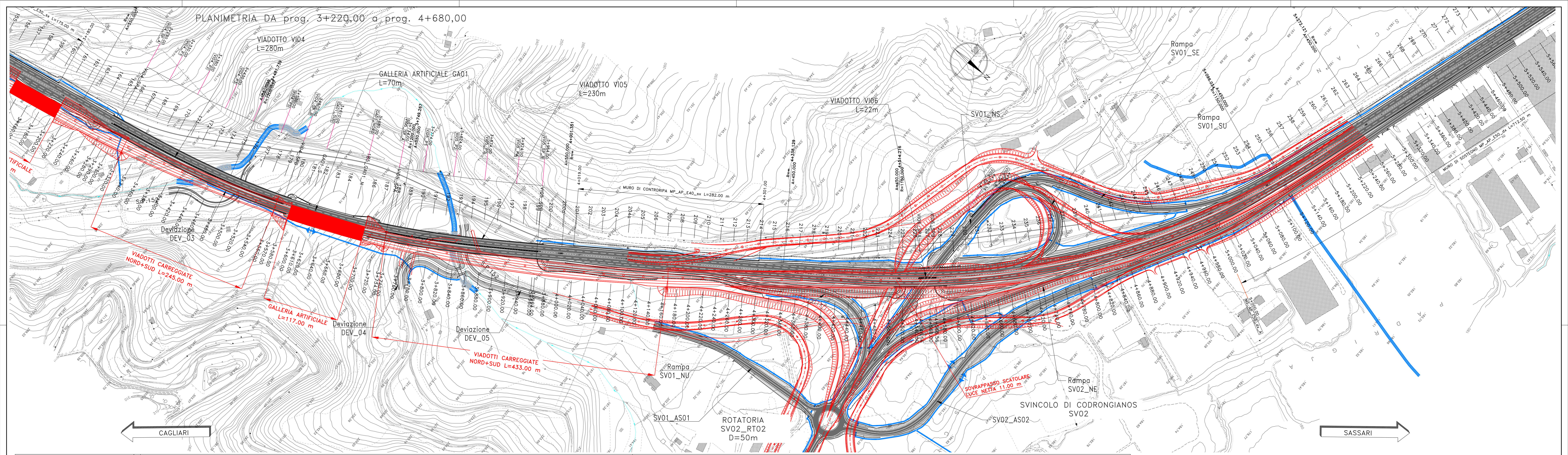
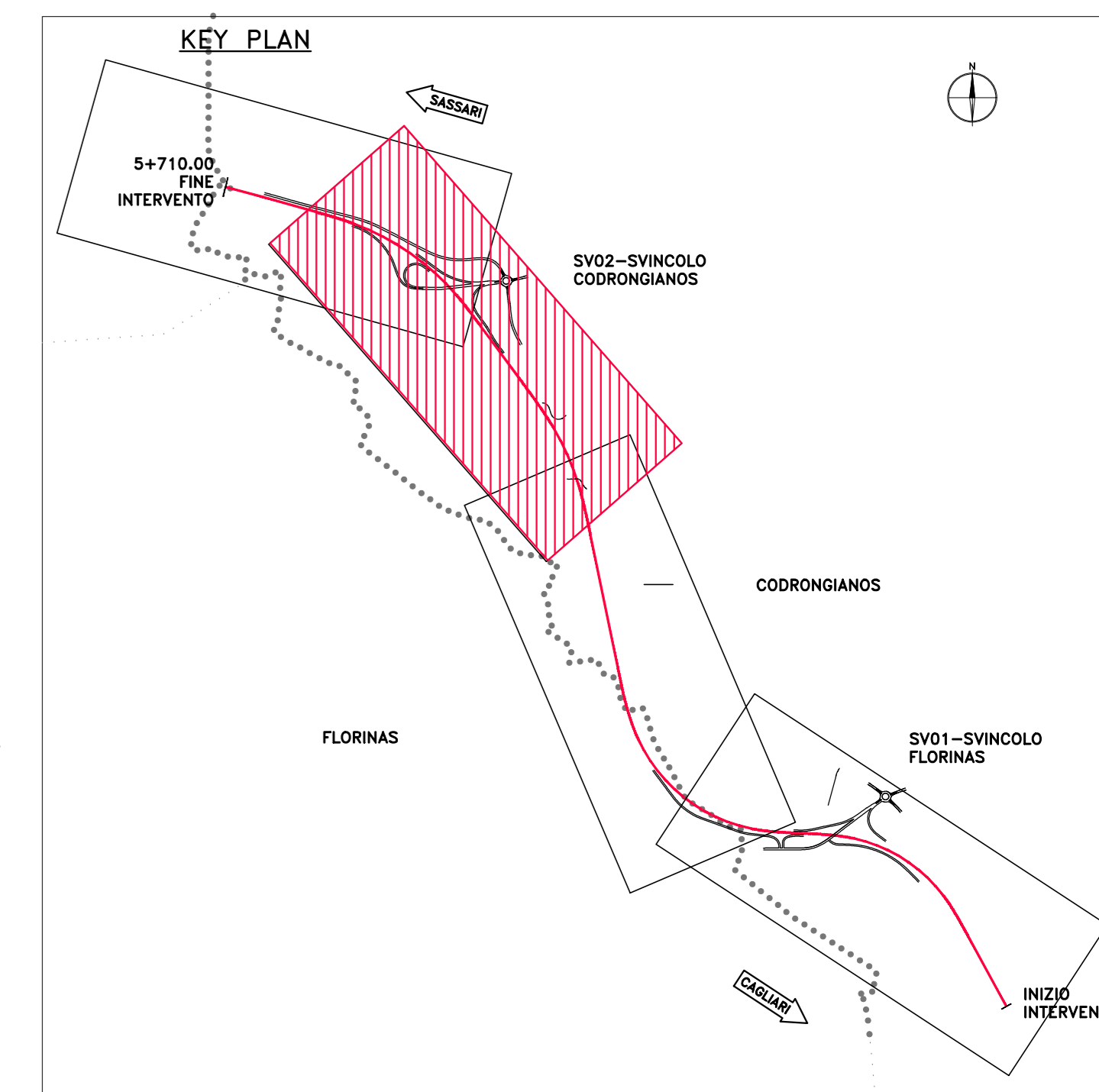
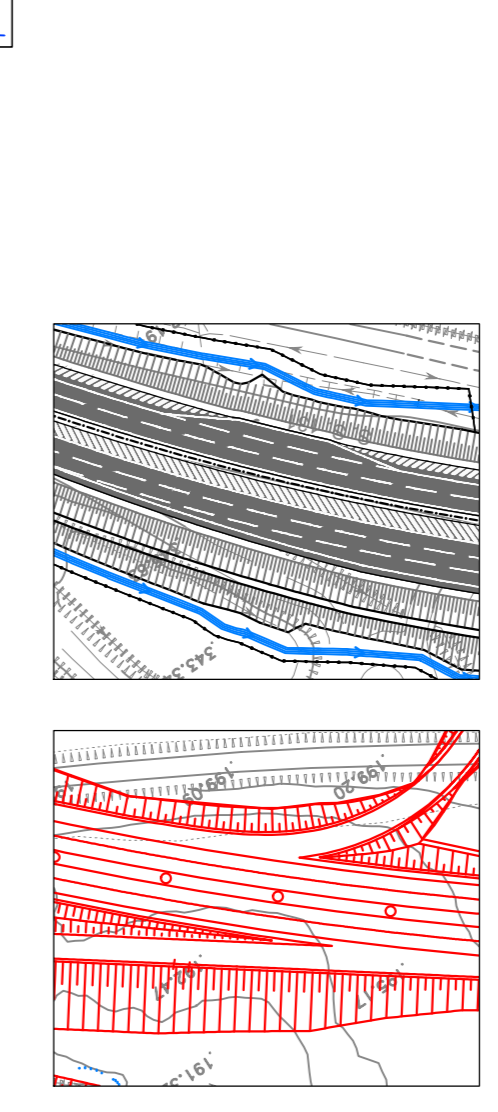


PLANIMETRIA DA prog. 3+220.00 a prog. 4+680.00



NUMERO SEZIONE	DISTANZE PARZIALI	DISTANZE PROGRESSIVE	QUOTE PROGETTO	QUOTE TERRENO	DIFFERENZA QUOTE	ANDAMENTO PLANIMETRICO	ANDAMENTO CIGLI	ETOMETRICHE
162	20.0	20.0	256.71	256.71	0.00	L=252.08m A=550.00	L=118.18	-2.00%
163	20.0	240.00	254.89	254.89	0.00			
164	20.0	260.00	253.05	253.05	0.00	L=267.53m R=1200.00m	L=118.18	-3.00%
165	20.0	280.00	251.21	251.21	0.00			
166	20.0	300.00	249.37	249.37	0.00	L=252.08m A=550.00	L=118.18	-2.00%
167	20.0	320.00	247.53	247.53	0.00			
168	20.0	340.00	245.69	245.69	0.00	L=176.09m A=450.00	L=118.18	-2.00%
169	20.0	360.00	243.85	243.85	0.00			
170	20.0	380.00	242.01	242.01	0.00	L=581.82m R=1150.00m	L=118.18	-2.00%
171	20.0	400.00	240.17	240.17	0.00			
172	20.0	420.00	238.33	238.33	0.00	L=176.09m A=450.00	L=118.18	-2.00%
173	20.0	440.00	236.49	236.49	0.00			
174	20.0	460.00	234.65	234.65	0.00	L=176.09m A=450.00	L=118.18	-2.00%
175	20.0	480.00	232.81	232.81	0.00			
176	20.0	500.00	230.97	230.97	0.00	L=176.09m A=450.00	L=118.18	-2.00%
177	20.0	520.00	229.13	229.13	0.00			
178	20.0	540.00	227.29	227.29	0.00	L=176.09m A=450.00	L=118.18	-2.00%
179	20.0	560.00	225.45	225.45	0.00			
180	20.0	580.00	223.61	223.61	0.00	L=176.09m A=450.00	L=118.18	-2.00%
181	20.0	600.00	221.77	221.77	0.00			
182	20.0	620.00	219.93	219.93	0.00	L=176.09m A=450.00	L=118.18	-2.00%
183	20.0	640.00	218.09	218.09	0.00			
184	20.0	660.00	216.25	216.25	0.00	L=176.09m A=450.00	L=118.18	-2.00%
185	20.0	680.00	214.41	214.41	0.00			
186	20.0	700.00	212.57	212.57	0.00	L=176.09m A=450.00	L=118.18	-2.00%
187	20.0	720.00	210.73	210.73	0.00			
188	20.0	740.00	208.89	208.89	0.00	L=176.09m A=450.00	L=118.18	-2.00%
189	20.0	760.00	207.05	207.05	0.00			
190	20.0	780.00	205.21	205.21	0.00	L=176.09m A=450.00	L=118.18	-2.00%
191	20.0	800.00	203.37	203.37	0.00			
192	20.0	820.00	201.53	201.53	0.00	L=176.09m A=450.00	L=118.18	-2.00%
193	20.0	840.00	199.69	199.69	0.00			
194	20.0	860.00	197.85	197.85	0.00	L=176.09m A=450.00	L=118.18	-2.00%
195	20.0	880.00	196.01	196.01	0.00			
196	20.0	900.00	194.17	194.17	0.00	L=176.09m A=450.00	L=118.18	-2.00%
197	20.0	920.00	192.33	192.33	0.00			
198	20.0	940.00	190.49	190.49	0.00	L=176.09m A=450.00	L=118.18	-2.00%
199	20.0	960.00	188.65	188.65	0.00			
200	20.0	980.00	186.81	186.81	0.00	L=176.09m A=450.00	L=118.18	-2.00%
201	20.0	1000.00	184.97	184.97	0.00			
202	20.0	1020.00	183.13	183.13	0.00	L=176.09m A=450.00	L=118.18	-2.00%
203	20.0	1040.00	181.29	181.29	0.00			
204	20.0	1060.00	179.45	179.45	0.00	L=176.09m A=450.00	L=118.18	-2.00%
205	20.0	1080.00	177.61	177.61	0.00			
206	20.0	1100.00	175.77	175.77	0.00	L=176.09m A=450.00	L=118.18	-2.00%
207	20.0	1120.00	173.93	173.93	0.00			
208	20.0	1140.00	172.09	172.09	0.00	L=176.09m A=450.00	L=118.18	-2.00%
209	20.0	1160.00	170.25	170.25	0.00			
210	20.0	1180.00	168.41	168.41	0.00	L=176.09m A=450.00	L=118.18	-2.00%
211	20.0	1200.00	166.57	166.57	0.00			
212	20.0	1220.00	164.73	164.73	0.00	L=176.09m A=450.00	L=118.18	-2.00%
213	20.0	1240.00	162.89	162.89	0.00			
214	20.0	1260.00	161.05	161.05	0.00	L=176.09m A=450.00	L=118.18	-2.00%
215	20.0	1280.00	159.21	159.21	0.00			
216	20.0	1300.00	157.37	157.37	0.00	L=176.09m A=450.00	L=118.18	-2.00%
217	20.0	1320.00	155.53	155.53	0.00			
218	20.0	1340.00	153.69	153.69	0.00	L=176.09m A=450.00	L=118.18	-2.00%
219	20.0	1360.00	151.85	151.85	0.00			
220	20.0	1380.00	150.01	150.01	0.00	L=176.09m A=450.00	L=118.18	-2.00%
221	20.0	1400.00	148.17	148.17	0.00			
222	20.0	1420.00	146.33	146.33	0.00	L=176.09m A=450.00	L=118.18	-2.00%
223	20.0	1440.00	144.49	144.49	0.00			
224	20.0	1460.00	142.65	142.65	0.00	L=176.09m A=450.00	L=118.18	-2.00%
225	20.0	1480.00	140.81	140.81	0.00			
226	20.0	1500.00	138.97	138.97	0.00	L=176.09m A=450.00	L=118.18	-2.00%
227	20.0	1520.00	137.13	137.13	0.00			
228	20.0	1540.00	135.29	135.29	0.00	L=176.09m A=450.00	L=118.18	-2.00%
229	20.0	1560.00	133.45	133.45	0.00			
230	20.0	1580.00	131.61	131.61	0.00	L=176.09m A=450.00	L=118.18	-2.00%
231	20.0	1600.00	129.77	129.77	0.00			
232	20.0	1620.00	127.93	127.93	0.00	L=176.09m A=450.00	L=118.18	-2.00%
233	20.0	1640.00	126.09	126.09	0.00			



PROGETTO DEFINITIVO  
PROGETTO PRELIMINARE SULMONA 2004

**Sanas** GRUPPO FS ITALIANE  
Direzione Progettazione e Realizzazione Lavori

S.S. n.131 "Carlo Felice"  
Completamento itinerario Sassari - Olbia  
Potenziamento-Messa in sicurezza dal km 192+500 al km 209+500  
1° lotto (dal km 193 al km 199)

**PROGETTO DEFINITIVO** COD. CA349

PROGETTAZIONE: **ATI VIA - SERING - VDP - BRENG**

PROGETTISTA E RESPONSABILE DELL'INTEGRAZIONE DELLE PRESTAZIONI SPECIALISTICHE:  
Det. Ing. Giovanni Pignatelli (Det. Ing. Prov. Roma 27298)

RESPONSABILI D'AREA:  
Responsabile Tracciato Viario: Det. Ing. Massimo Capasso (Det. Ing. Prov. Roma 27298)  
Responsabile Struttura: Det. Ing. Giovanni Pignatelli (Det. Ing. Prov. Roma 27298)  
Responsabile Sicurezza in Fase di Progettazione: Det. Ing. Matteo Di Giovanni (Det. Ing. Prov. Roma 15138)  
Det. Ing. Franco Venturi (Det. Ing. Prov. Roma 14660)

RESPONSABILE SIA:  
Det. Ing. Francesco Venturi (Det. Ing. Prov. Roma 14660)

VISTO: IL RESPONSABILE DEL PROCEDIMENTO:  
Det. Ing. Salvatore Piro

ELABORATI GENERALI  
PARERI PREGRESSI

PLANIMETRIA E PROFILO DI CONFRONTO CON PROGETTO PRELIMINARE SULMONA 2004  
TAV. 03

CODICE PROGETTO	NOME FILE	REVISIONE	SCALA:
PROGETTO	TOEGGOGENPF01_04A		
ELAB.	TOEGGOGENPF03	A	1:2000

REVISIONE	DESCRIZIONE	DATA	REDATTO	VERIFICATO	APPROVATO
D					
C					
B					
A	EMISSIONE	NOV. 2020	F.PIGNATELLI	V.VENTURI	G. PIAZZA