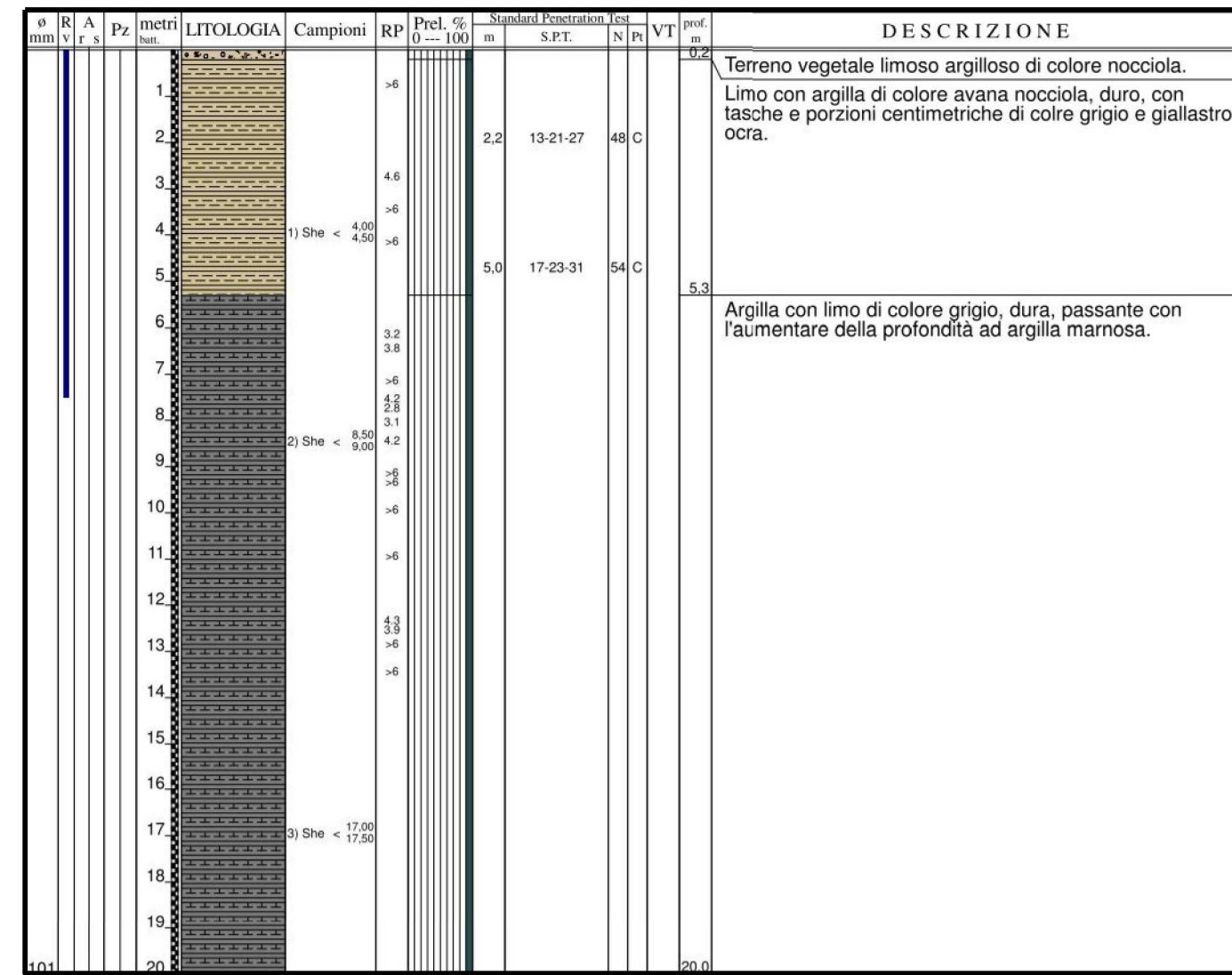
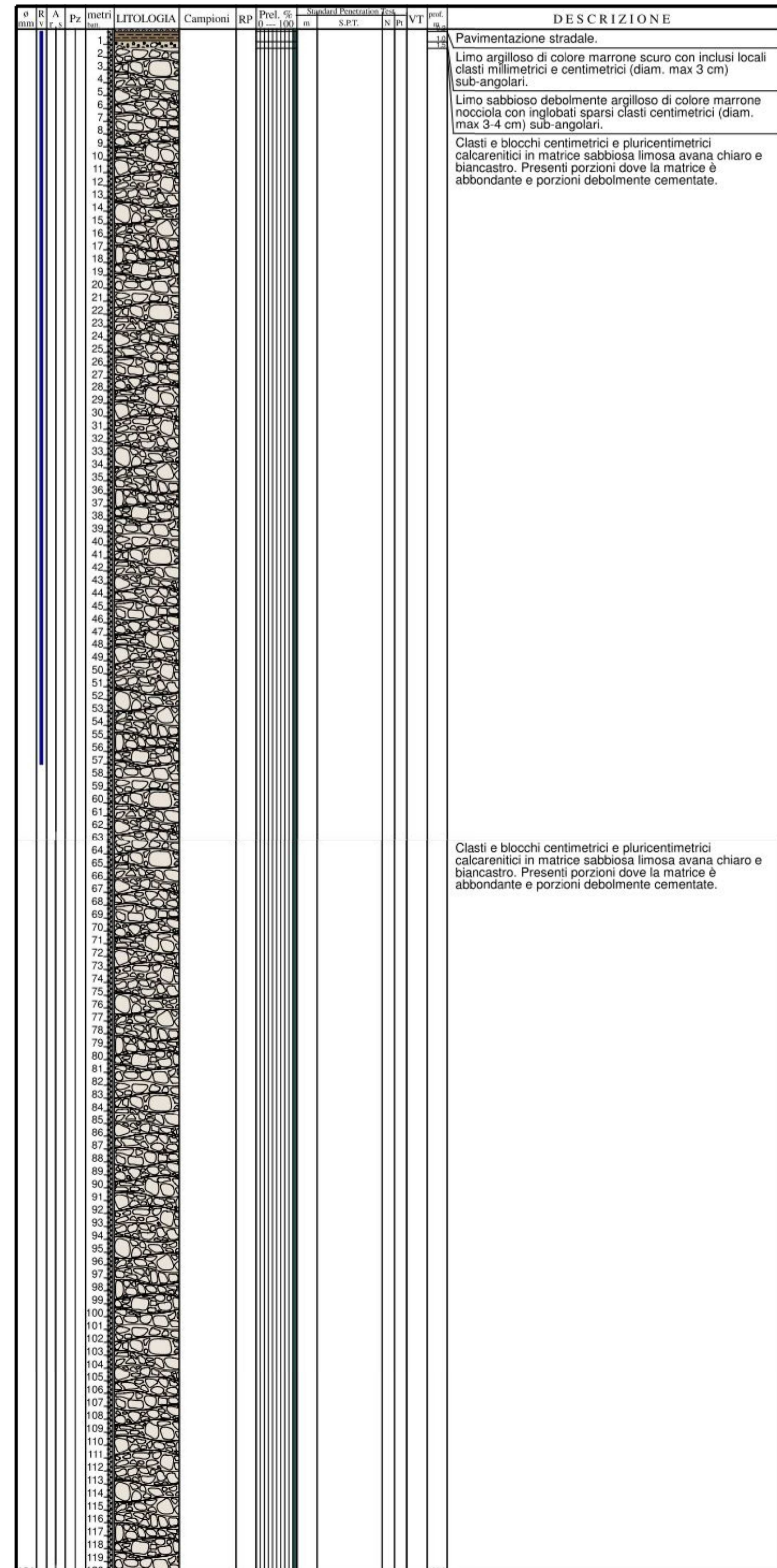


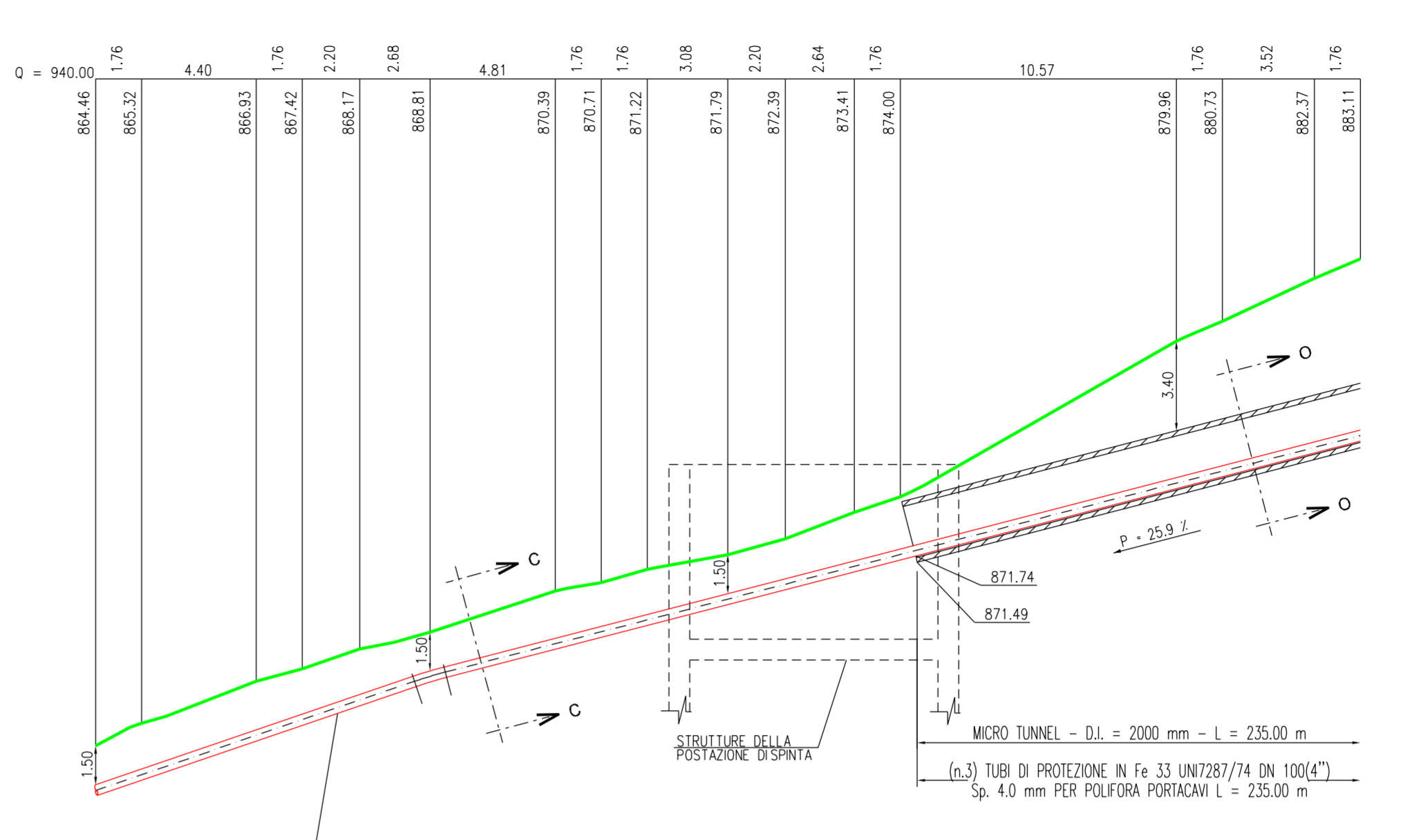
STRATIGRAFIA - SH 21



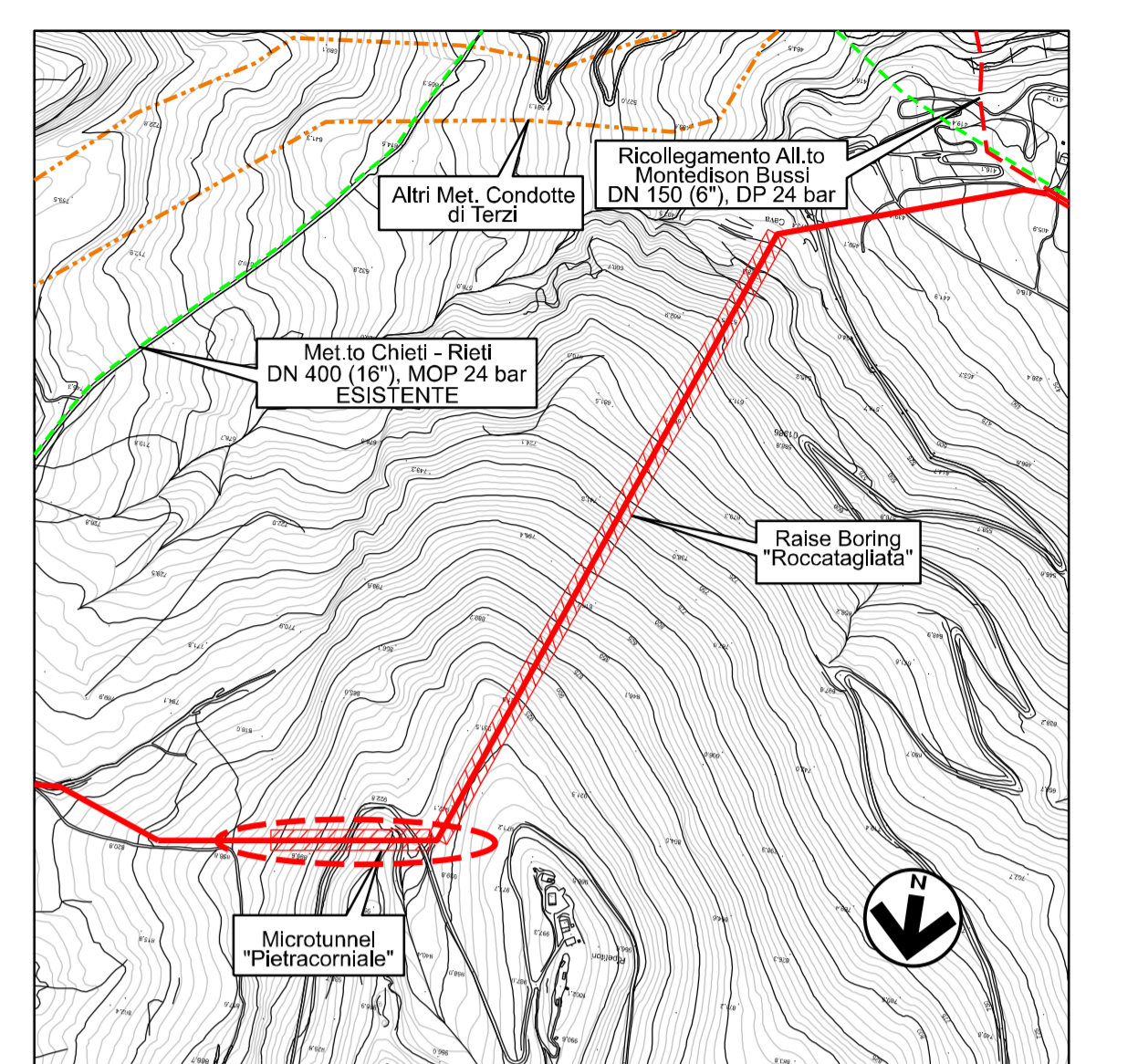
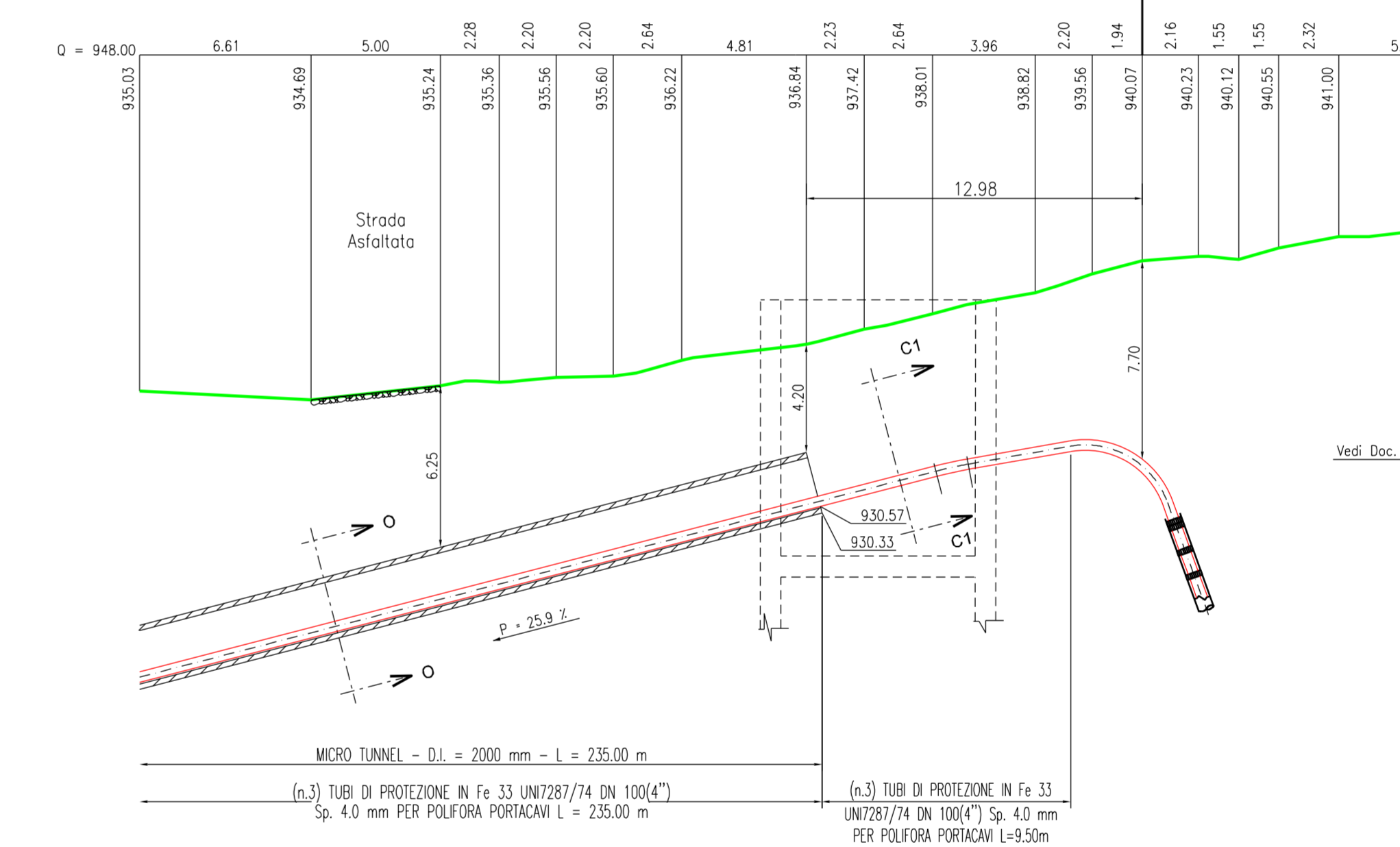
STRATIGRAFIA - SH 22



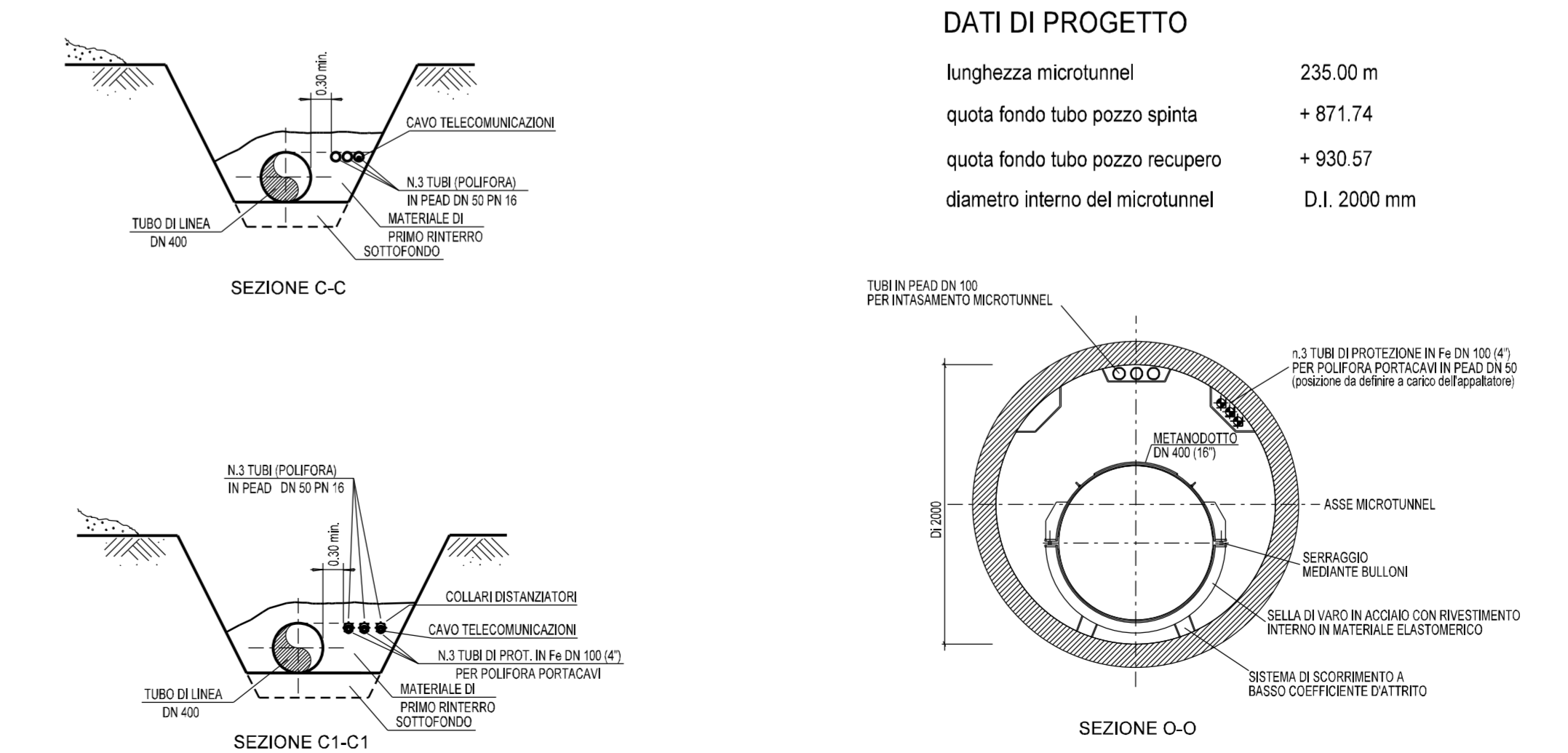
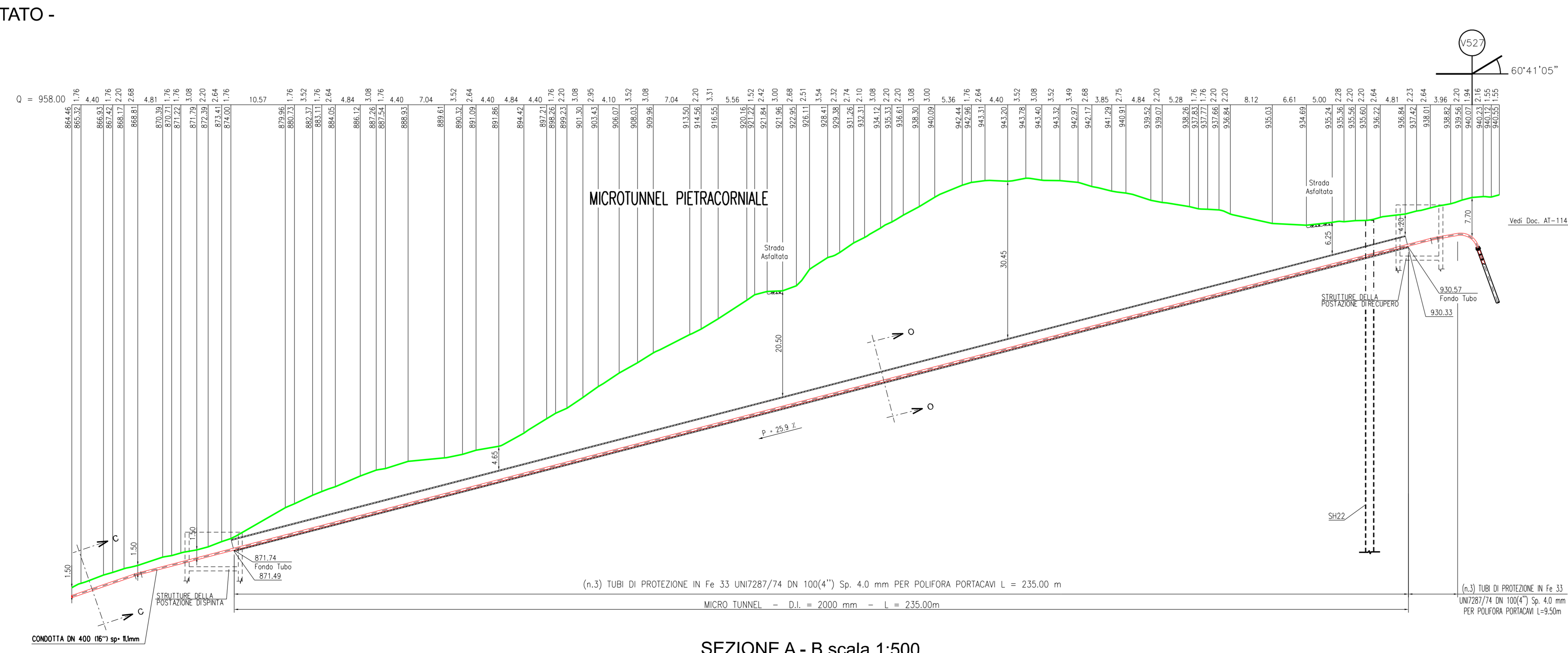
PARTICOLARE SEZIONE IMBOCCO MICROTUNNEL - scala 1:200



PARTICOLARE SEZIONE USCITA MICROTUNNEL - scala 1:200



LEGENDA PLANIMETRIA:  
--- MET. IN PROGETTO



DATI DI PROGETTO

- lunghezza microtunnel: 235.00 m
- quota fondo tubo pozzo spinta: + 871.74
- quota fondo tubo pozzo recupero: + 930.57
- diámetro interno del microtunnel: Øi. 2000 mm

REVISIONE	DATA	EMESIONE	SEZIONANDO	PATRINO	REDA	CAPROTTI
00		09/04/2021				

COMMESSA NR/ 19094

PROFILO LONGITUDINALE "MICROTUNNEL PIETRACORNALE" PROG. KM 28+280

SCALA: 1:500

