

WIND FARM "CIAVATTA"

Sottostazione elettrica 30/150 kV - Piante, prospetti e sezioni



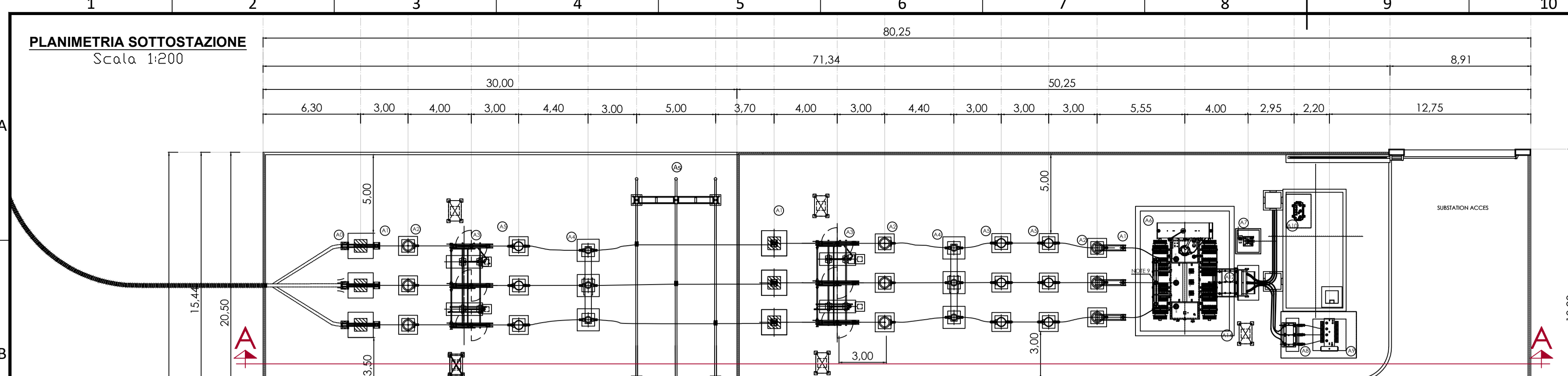
EDIC.	DATE	DRAWN	CHECKED	REVISED-EDPR	MODIFICATION	DATE	SCALE	Format	renewables	ING. MASSIMO MAGNOTTA
						02/21	DRAWN LL			CAD Vers.: A Page Vers.: A
						02/21	CHECKED MM		WIND FARM "CIAVATTA"	Name collection: Page: A0
						02/21	REVISED-EDPR FS		PIANTE, PROSPETTI E SEZIONI SOTTOSTAZIONE ELETTRICA Serracapriola (Regione Puglia)	SSE Cont:...
								Format A1		CAD N°: CW3201904002300050GL01

Nº PAGE	DESCRIPTION	DATE	EDIC. PAGE	Nº PAGE	DESCRIPTION	DATE	EDIC. PAGE
A0	COVER	02/21	A				
B0	INDICE	02/21	A				
01	PLANIMETRIA, SEZIONE E DETTAGLI COSTRUTTIVI SOTTOSTAZIONE	02/21	A				
02	SEZIONE DI DETTAGLIO	02/21	A				
03	PIANTA E PROSPETTI EDIFICIO UTENTE	02/21	A				



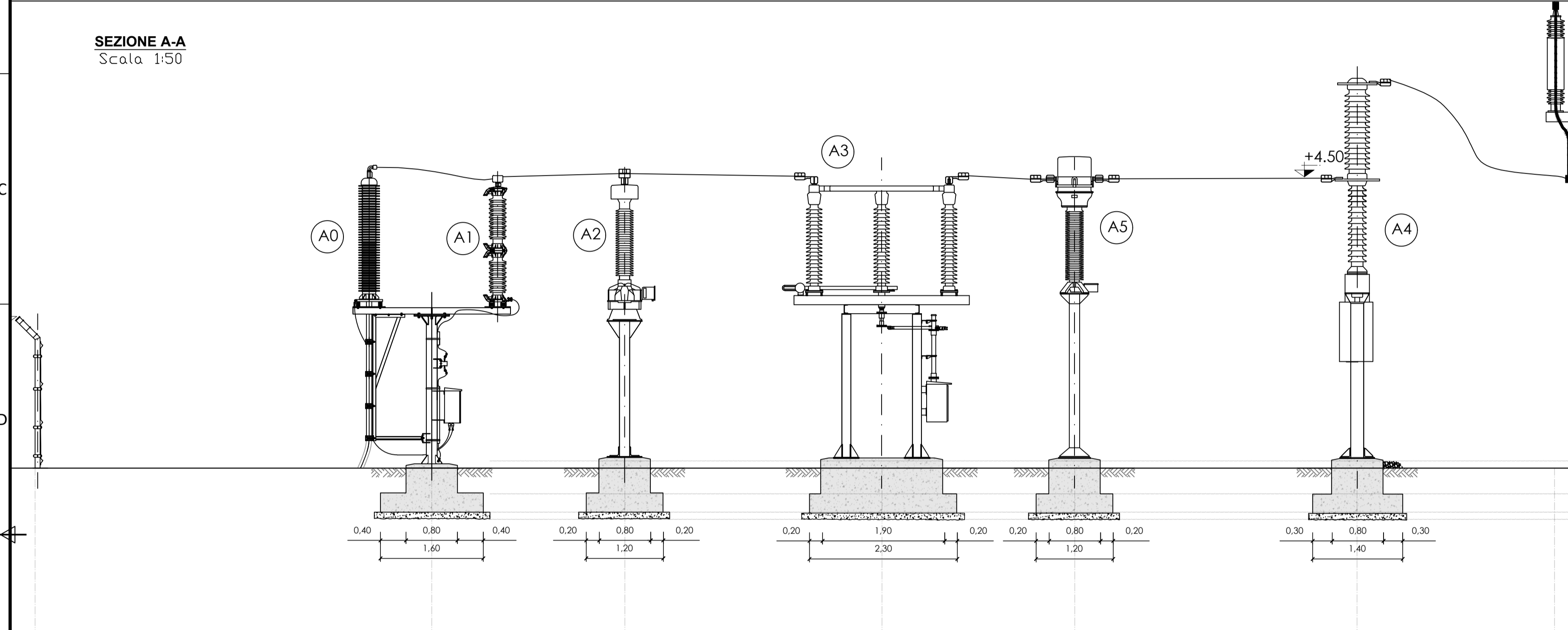
D						DATE	SCALE ---			ING. MASSIMO MAGNOTTA CAD Vers.: A Page Vers.: A	
C						02/21	DRAWN LL	WIND FARM "CIAVATTA"		Name collection:	Page: B0
B						02/21	CHECKED MM	PIANTE, PROSPETTI E SEZIONI SOTTOSTAZIONE ELETTRICA		SSE	Cont:--
A	08/02/21	LL	MM	FS		02/21	REVISED-EDPR FS	Serracapriola (Regione Puglia)			
EDIC.	DATE	DRAWN	CHECKED	REVISED-EDPR				Format A1			

PLANIMETRIA SOTTOSTAZIONE
Scala 1:200

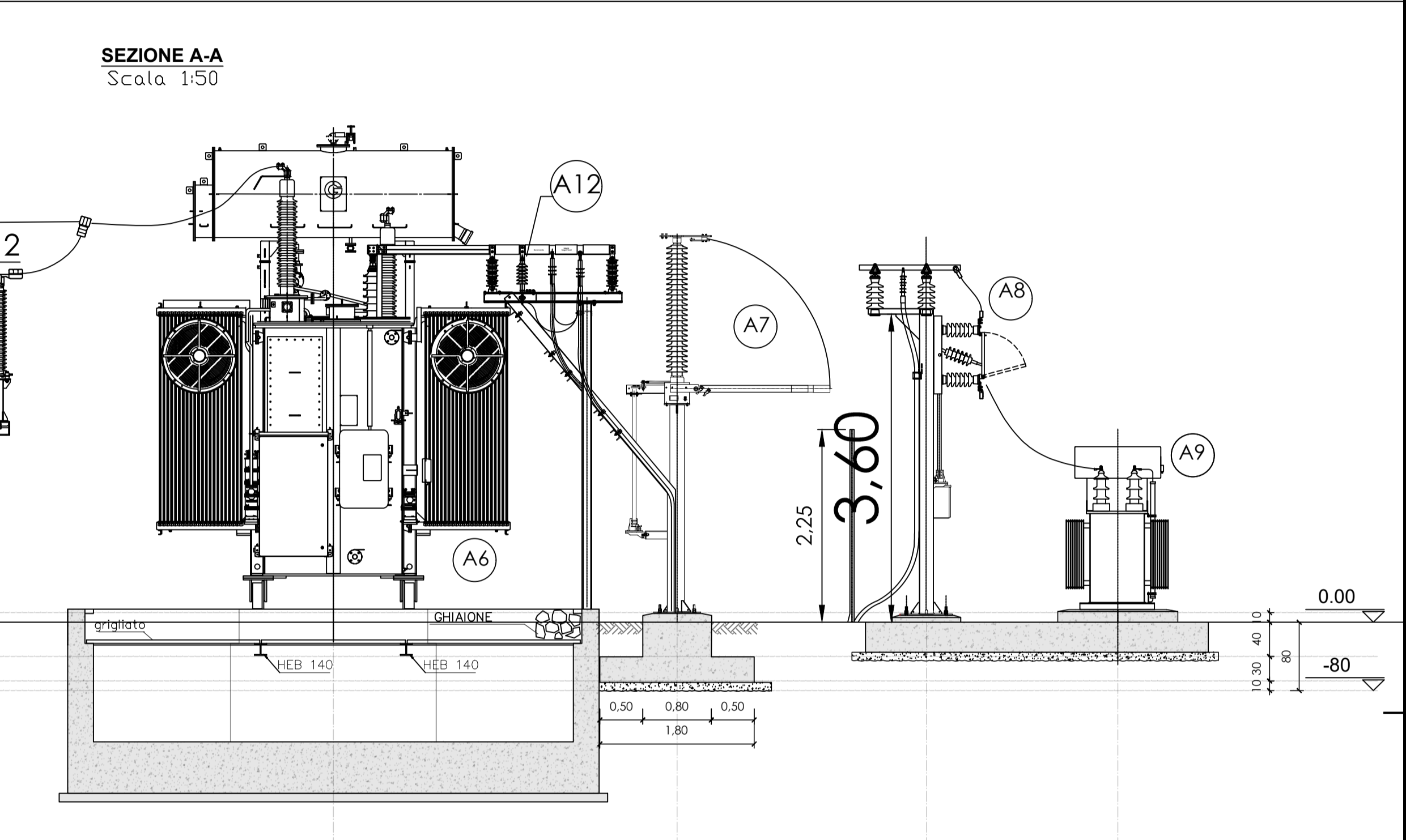


MAIN EQUIPMENTS		
ITEM	UNITS	DESCRIPTION
A0	3	HV CARRIER INSULATOR
A1	6	SURGE ARRESTER HV
A2	6	VOLTAGE TRANSFORMER
A3	1	DISCONNECTOR WITH EARTHING SWITCH
A4	1	CIRCUIT BREAKER
A5	3	CURRENT TRANSFORMER
A6	1	POWER TRANSFORMER
A7	1	NEUTRAL SINGLE -POLE DISCONNECTOR
A8	1	DISCONNECTOR SWITCH
A9	1	EARTHING REACTANCE
A12	1	SURGE ARRESTER MV
A13	9	LIGHTS (NOTE 10)
A5	3	HV PORTAL

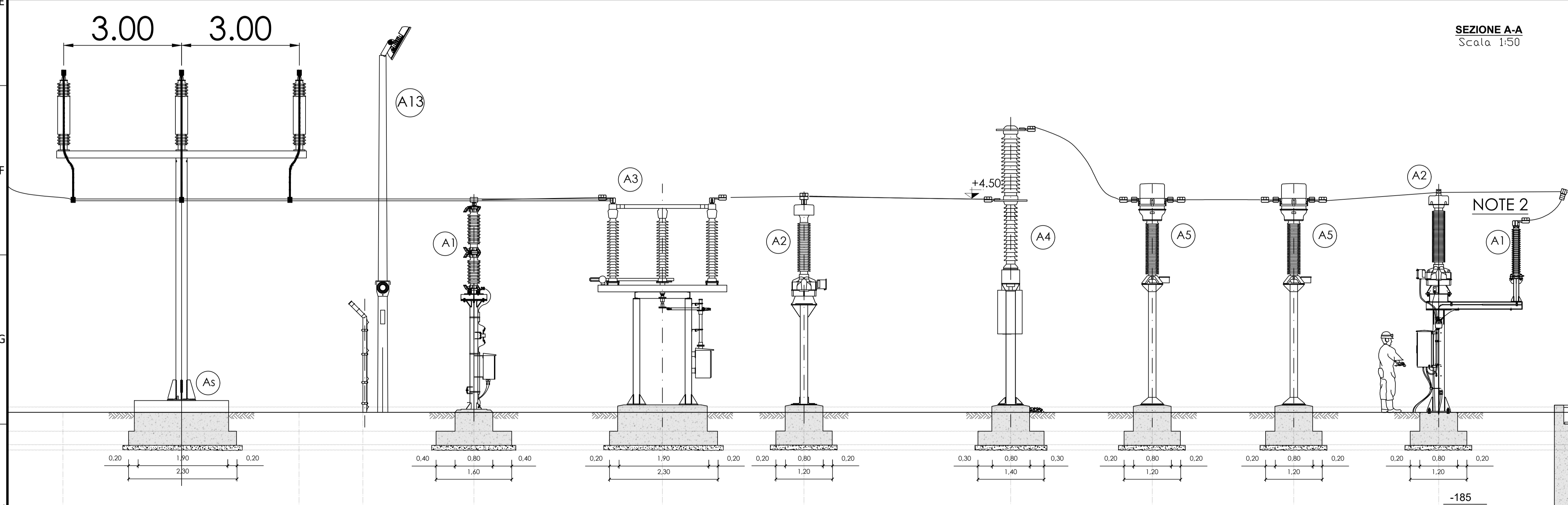
SEZIONE A-A
Scala 1:50



SEZIONE A-A
Scala 1:50



SEZIONE A-A
Scala 1:50



MAIN EQUIPMENTS		
ITEM	UNITS	DESCRIPTION
A0	3	HV CARRIER INSULATOR
A1	6	SURGE ARRESTER HV
A2	6	VOLTAGE TRANSFORMER
A3	1	DISCONNECTOR WITH EARTHING SWITCH
A4	1	CIRCUIT BREAKER
A5	3	CURRENT TRANSFORMER
A6	1	POWER TRANSFORMER
A7	1	NEUTRAL SINGLE -POLE DISCONNECTOR
A8	1	DISCONNECTOR SWITCH
A9	1	EARTHING REACTANCE
A12	1	SURGE ARRESTER MV
A13	9	LIGHTS (NOTE 10)
A5	3	HV PORTAL

NOTES:
1-THE HEIGHT OF THE SUPPORTS DEPENDS ON THE EQUIPMENT USED IN THE INSTALLATION BUT PHILOSOPHY MUST BE KEPT UP ALL STRUCTURES MUST BE AT LEAST 2.50m. HIGH.
2-THE CONNECTION BETWEEN THE HV/MV TRANSFORMER AND THE HV SURGE ARRESTER SHALL BE THROUGH CABLE, AVOIDING THE RIGID BARS CONNECTION.

NOTE 2

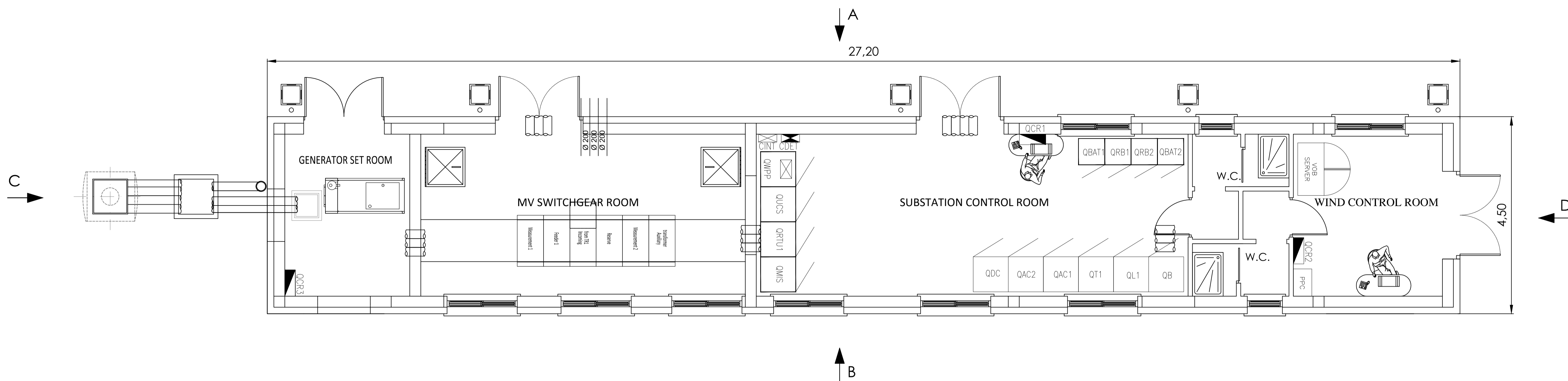
ING. MASSIMO MAGNOTTA
PROVINCIA DI...
ASSOCIAZIONE...
19510

EDIC.	DATE	DRAWN	CHECKED	REVISED-EDPR	MODIFICATION	DATE	SCALE	FORMAT
D						02/21	SCALE varie	
C						02/21	DRAWN LL	
B						02/21	CHECKED MM	
A	08/02/21	LL	MM	FS	PRIMA EMISSIONE	02/21	REVISED-EDPR FS	Format A1

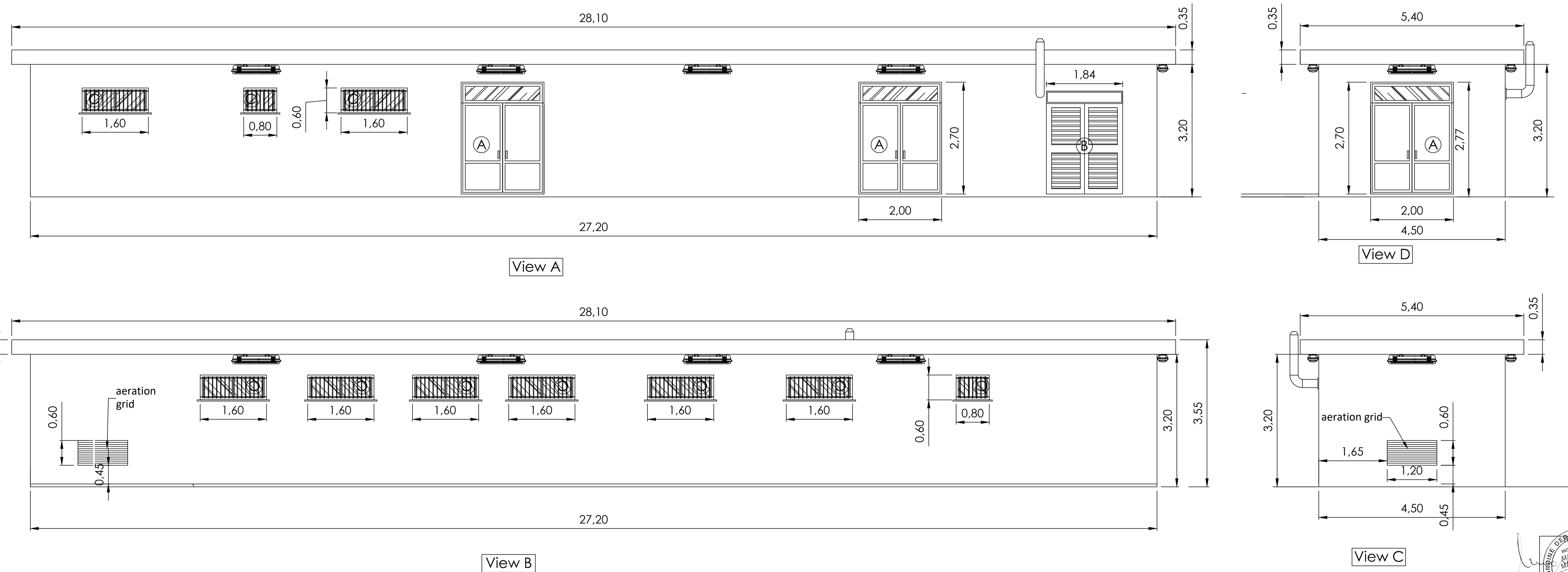
renewables
WIND FARM "CIAVATTA"
SEZIONE DI DETTAGLIO
Serracapriola (Regione Puglia)

ING. MASSIMO MAGNOTTA
CAD Vers.: A Page Vers.: A
Name collection: Page: 02
SSE Cont: 02 di 03
CAD N°: CW32019040023003050GL01

PIANTA EDIFICIO UTENTE



PROSPETTI EDIFICIO UTENTE



D																			
C																			
B																			
A	08/02/21	LL	MM	FS															
EDIC.	DATE	DRAWN	CHECKED	REVISED-EDPR															

DATE	SCALE 1/50		
02/21	DRAWN LL		
02/21	CHECKED MM		
02/21	REVISED-EDPR FS		
	Format A1		

		ING. MASSIMO MAGNOTTA CAD Vers.: A Page Vers.: A
WIND FARM "CIAVATTA" PIANTE E PROSPETTI EDIFICIO UTENTE Serracapriola (Regione Puglia)		Name collection: Page: 03 SSE Cont: 03 di 03 CAD N°: CW320194002300050GL01

