

SOCIETA' PER AZIONI AUTOSTRADA DEL BRENNERO - TRENTO

ORDINE DEGLI INGEGNERI
DELLA PROV. DI TRENTOdott.ing. **ROBERTO BOSETTI**

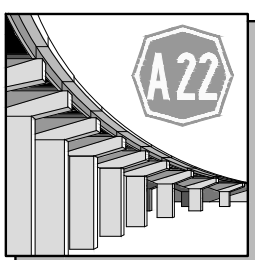

INSCRIZIONE ALBO N° 1027

IL RESPONSABILE DEL PROCEDIMENTO
dott. ing. Roberto Bosetti

autostrada del brennero

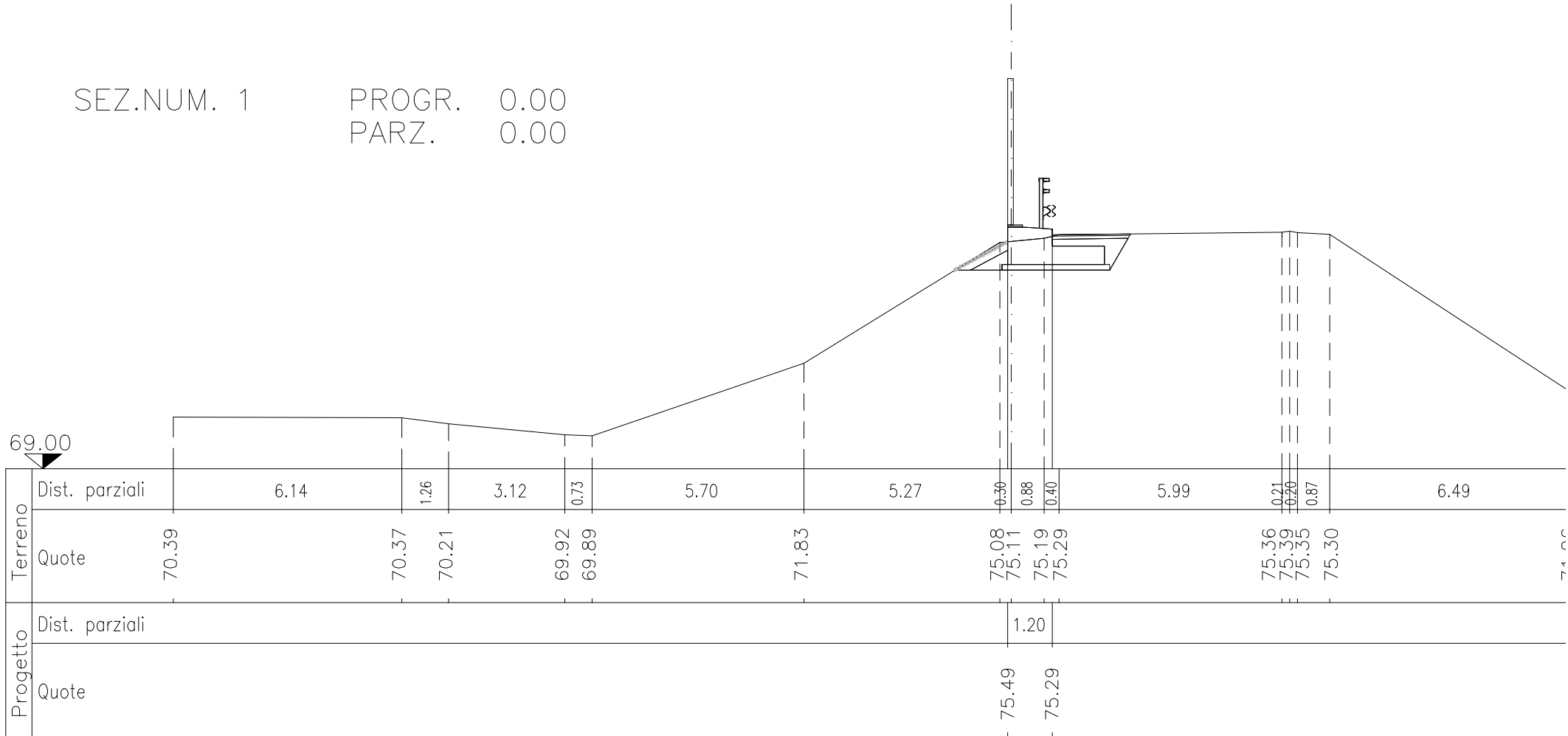
PROGETTO DEFINITIVO PER LA REALIZZAZIONE
DELLA TERZA CORSIA NEL TRATTO COMPRESO
TRA VERONA NORD (KM 223) E L'INTERSEZIONE
CON L'AUTOSTRADA A1 (KM 314)

A1	LOTTO 2 - dal km 223+100 al km 230+717
6.3.7.3.	INTERVENTI DI MITIGAZIONE - BARRIERE ANTIRUMORE Barriere in carreggiata nord Barriere B228+003N "pista svincolo Modena-Venezia" Sezioni scala 1:100

0	MAR. 2021	EMISSIONE	A. BERTOLDI	M. BRUGNOLLI	C. COSTA
REVISIONE:	DATA:	DESCRIZIONE:	REDAZIONE:	VERIFICA:	APPROVAZIONE:
DATA PROGETTO: LUGLIO 2009			DIREZIONE TECNICA GENERALE		IL DIRETTORE TECNICO GENERALE E PROGETTISTA: 
NUMERO PROGETTO: 31/09					

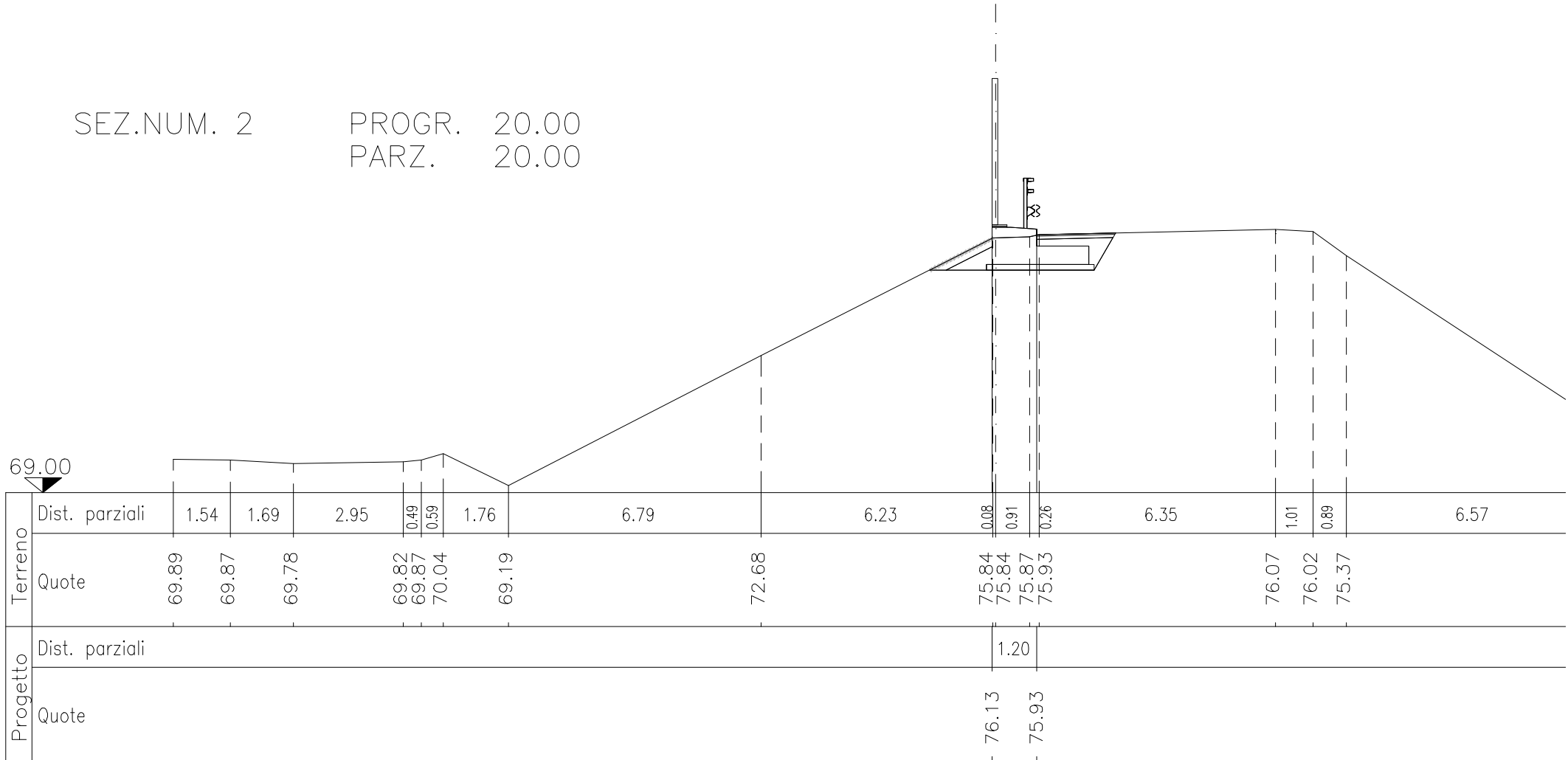
SEZ.NUM. 1

PROGR. 0.00
 PARZ. 0.00



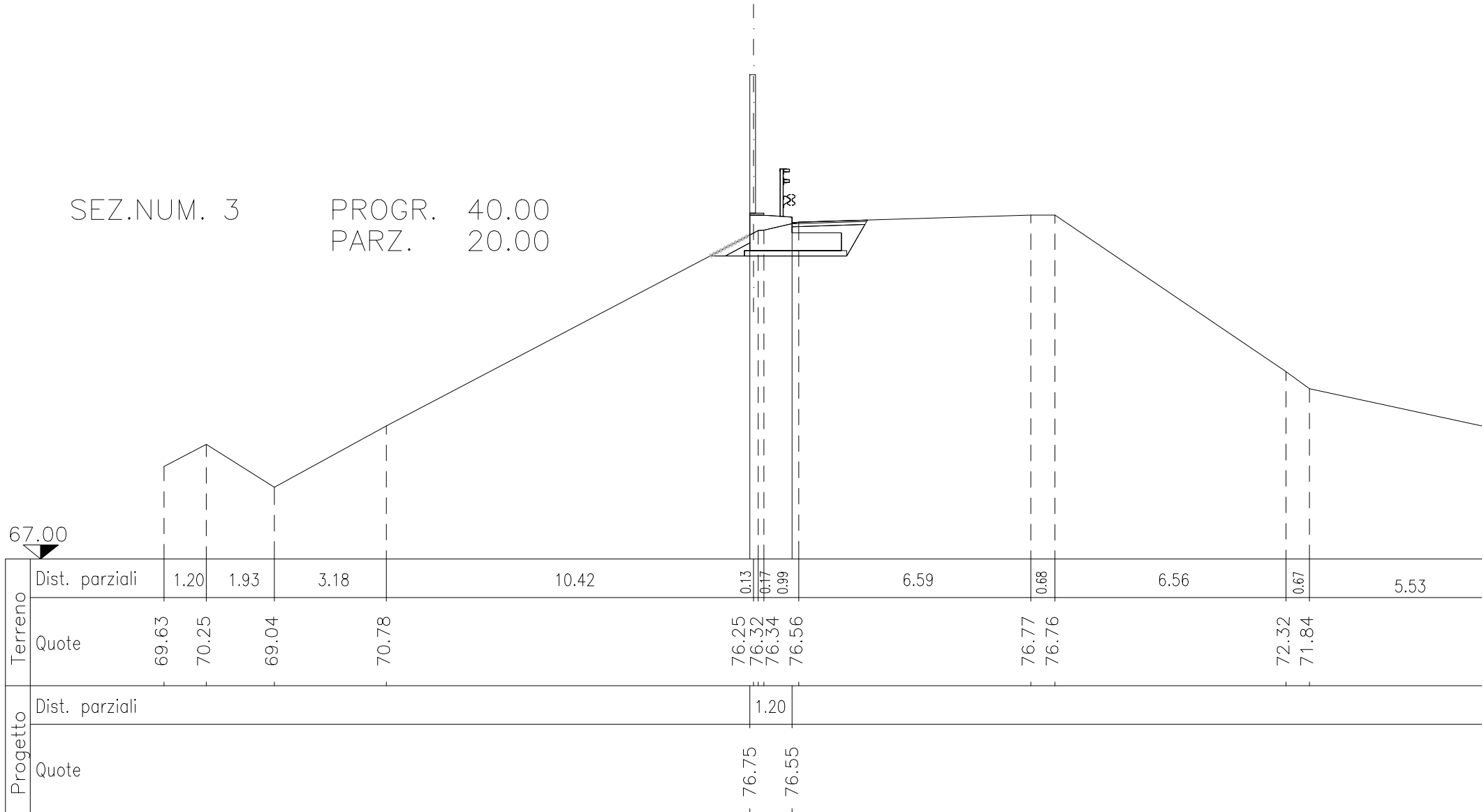
SEZ.NUM. 2

PROGR. 20.00
 PARZ. 20.00



SEZ.NUM. 3

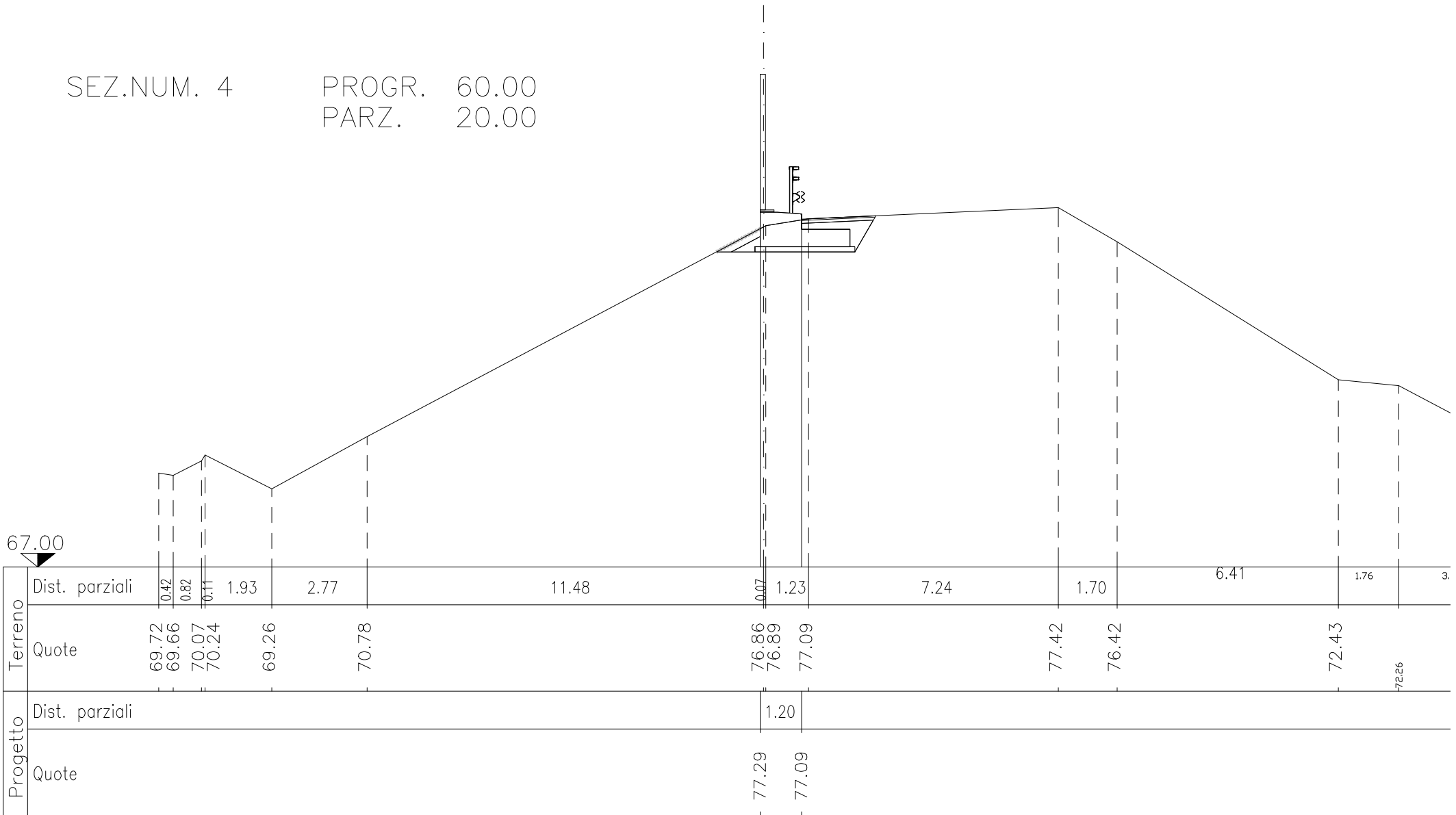
PROGR. 40.00
 PARZ. 20.00



SEZ.NUM. 4

PROGR. 60.00

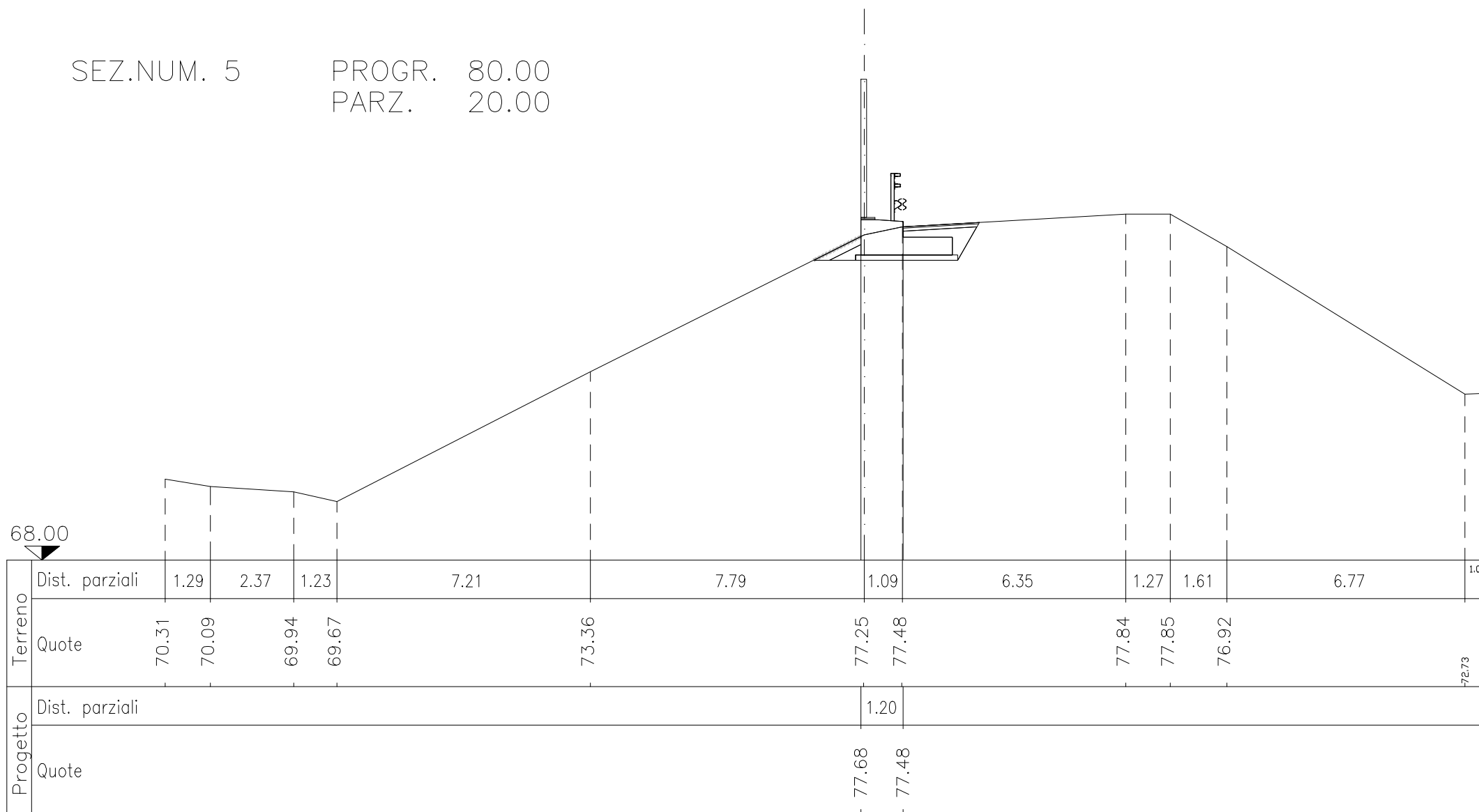
PARZ. 20.00



SEZ.NUM. 5

PROGR. 80.00

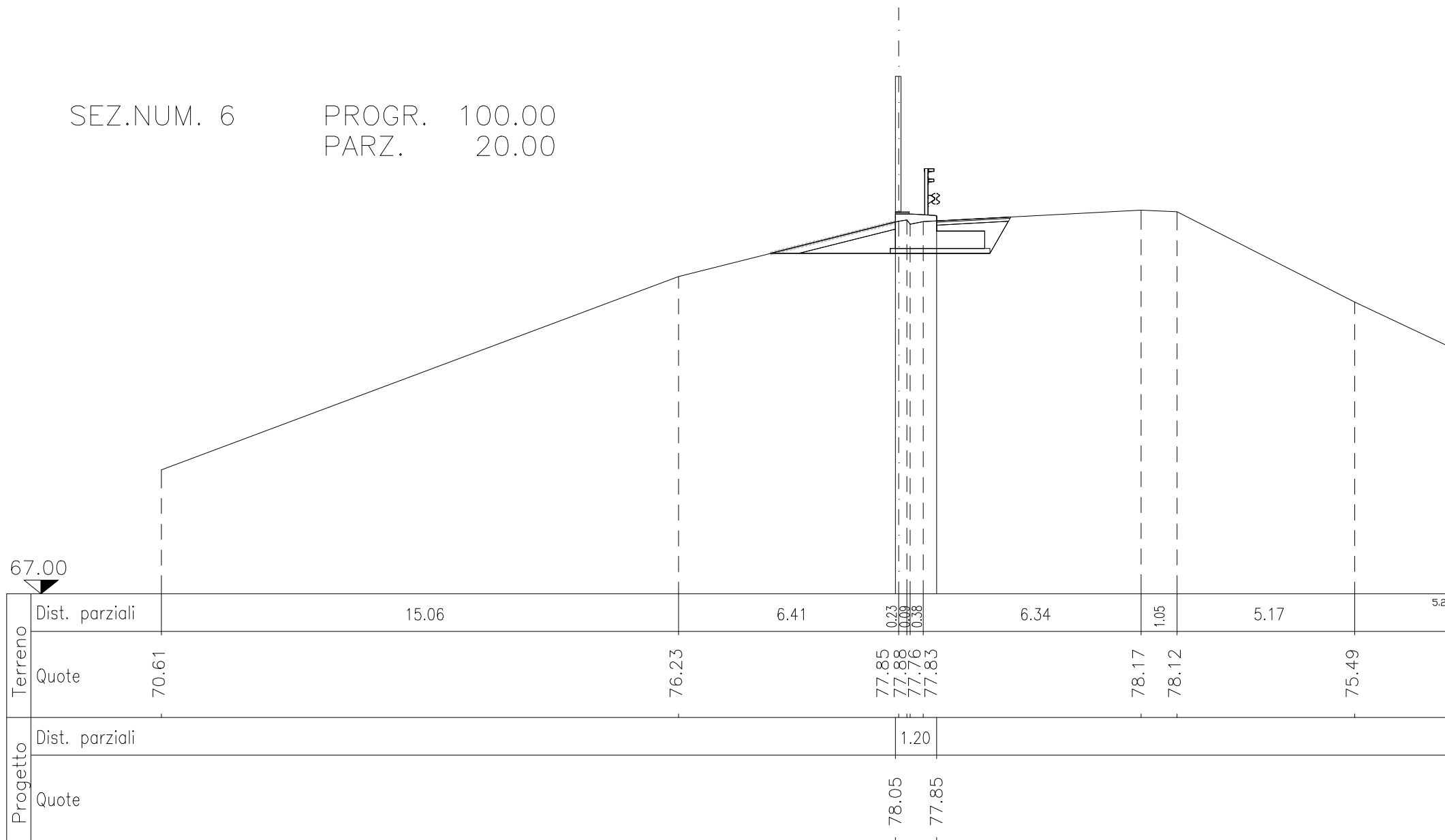
PARZ. 20.00



SEZ.NUM. 6

PROGR. 100.00

PARZ. 20.00



67.00

Dist. parziali

15.06

6.41

0.23

0.09

0.38

6.34

1.05

5.17

5.2

Terreno

Quote

70.61

76.23

77.85

77.88

77.76

77.83

78.17

78.12

75.49

Progetto

Dist. parziali

1.20

Quote

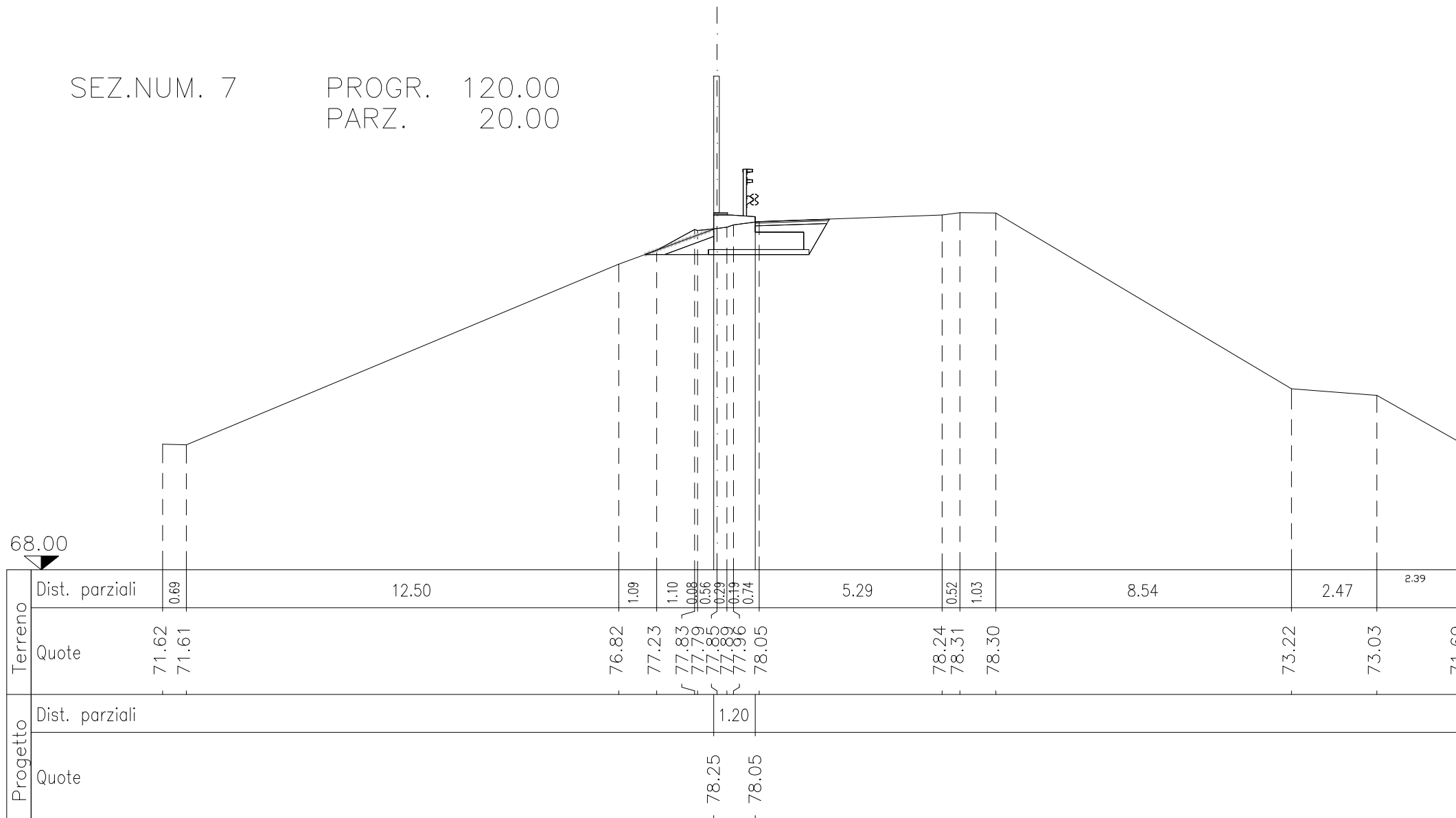
78.05

77.85

SEZ.NUM. 7

PROGR. 120.00

PARZ. 20.00



68.00



Dist. parziali

12.50

5.29

8.54

2.47

2.39

Terreno

Quote

71.62
71.61

76.82
77.23
77.83
77.79
77.85
77.80
77.96
78.05

78.24
78.31
78.30

73.22
73.03
71.60

Progetto

Dist. parziali

Quote

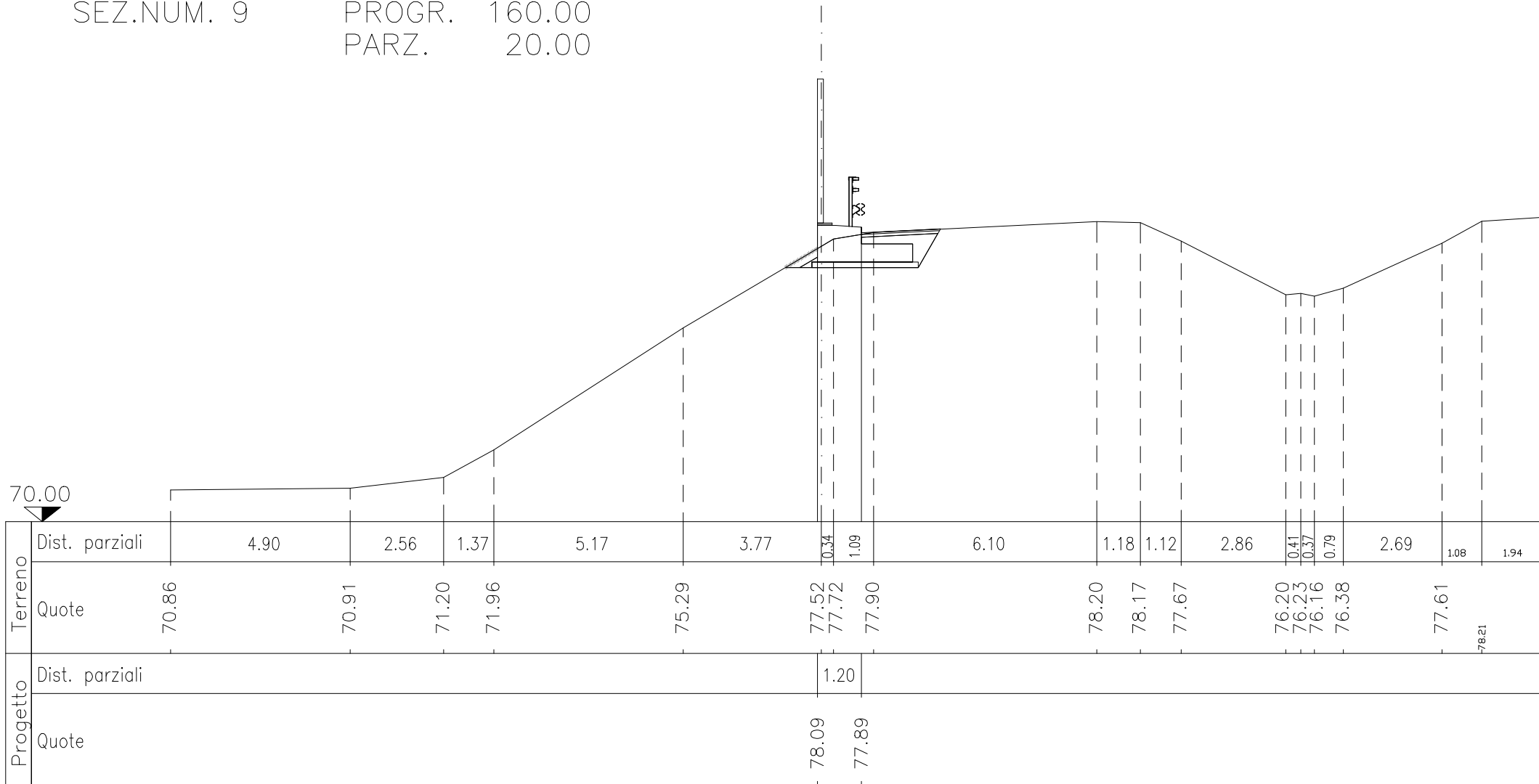
0.52

1.20

78.25
78.05

SEZ.NUM. 9

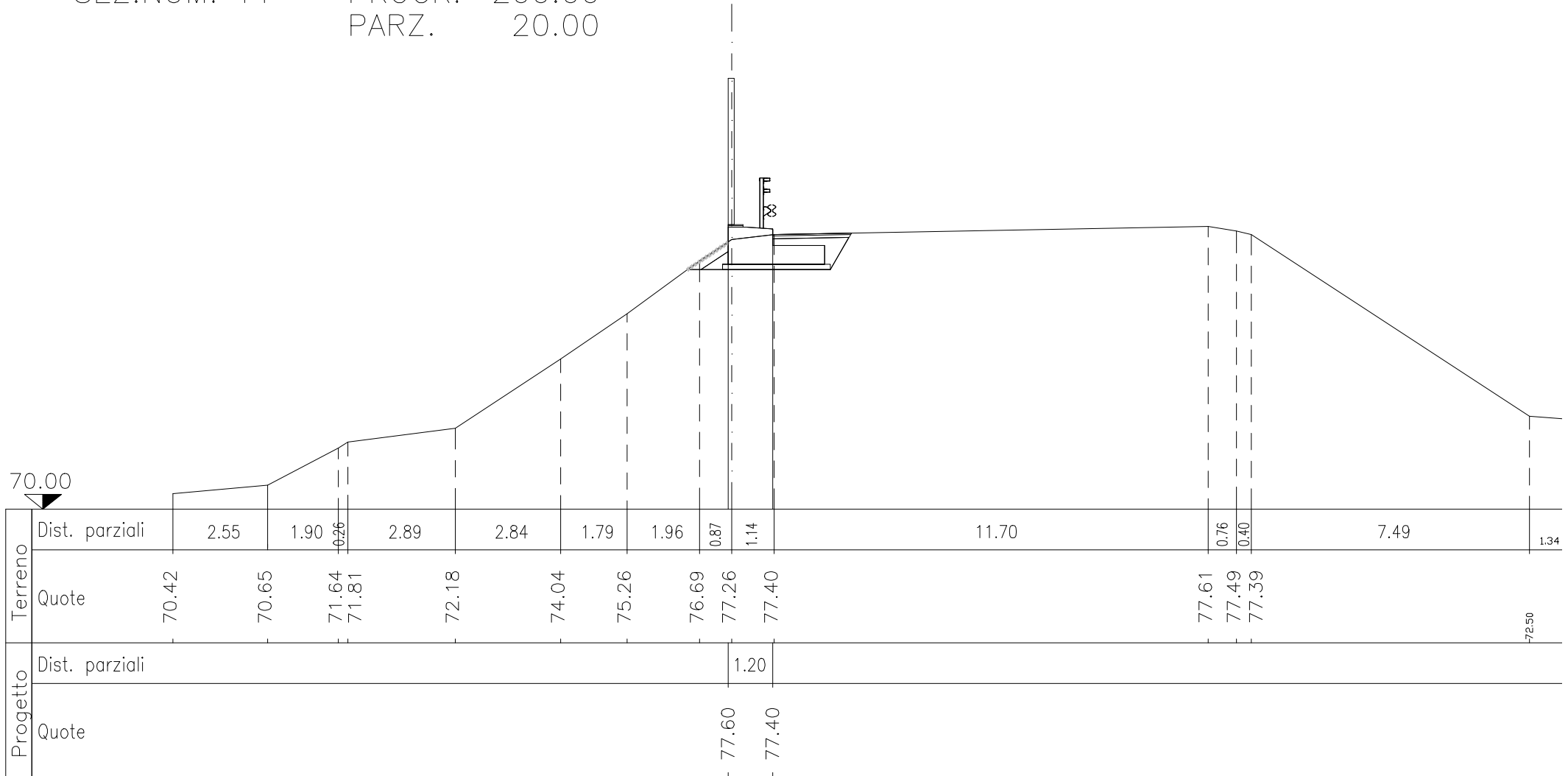
PROGR. 160.00
 PARZ. 20.00



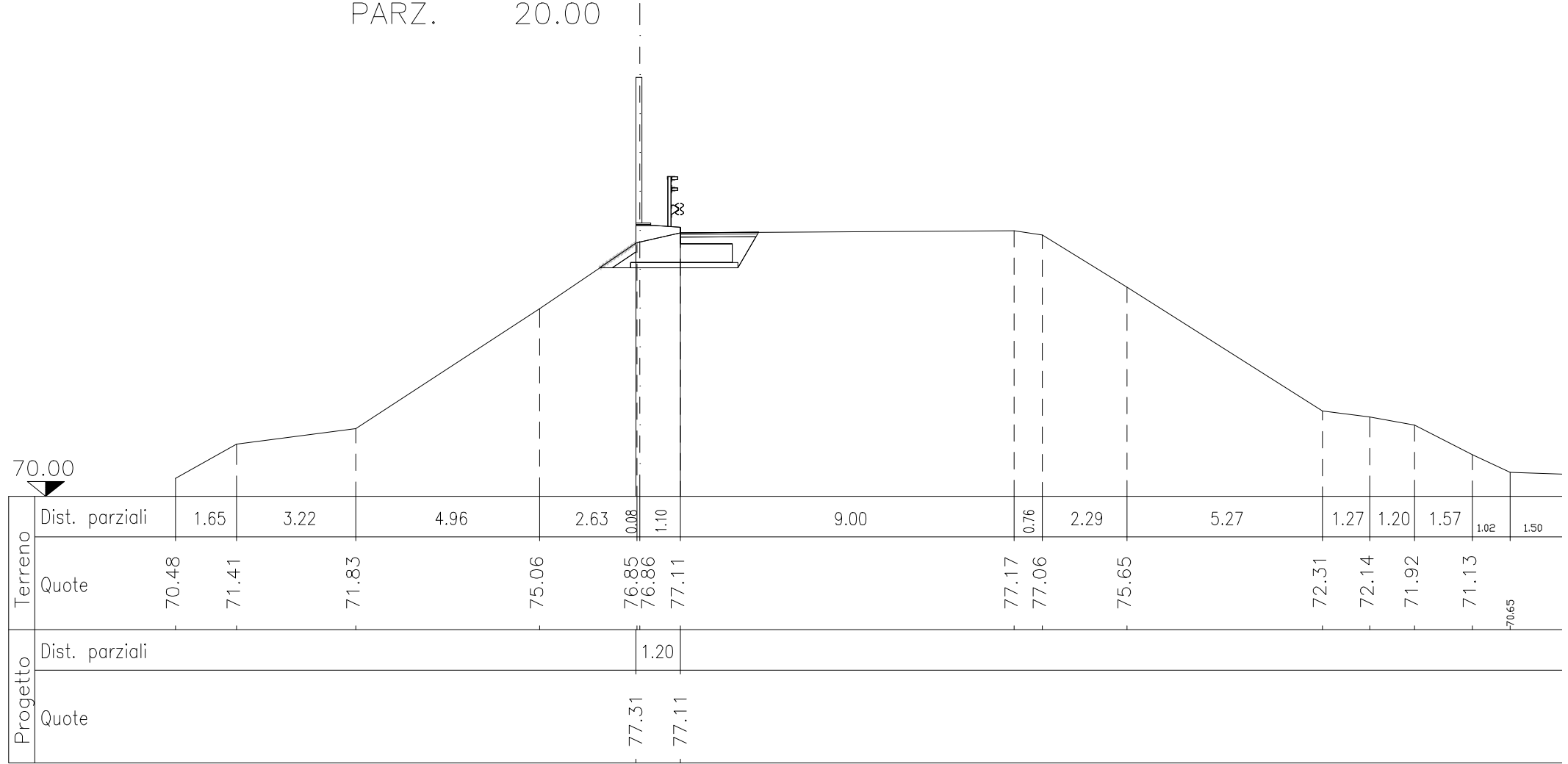
SEZ.NUM. 11

PROGR. 200.00

PARZ. 20.00



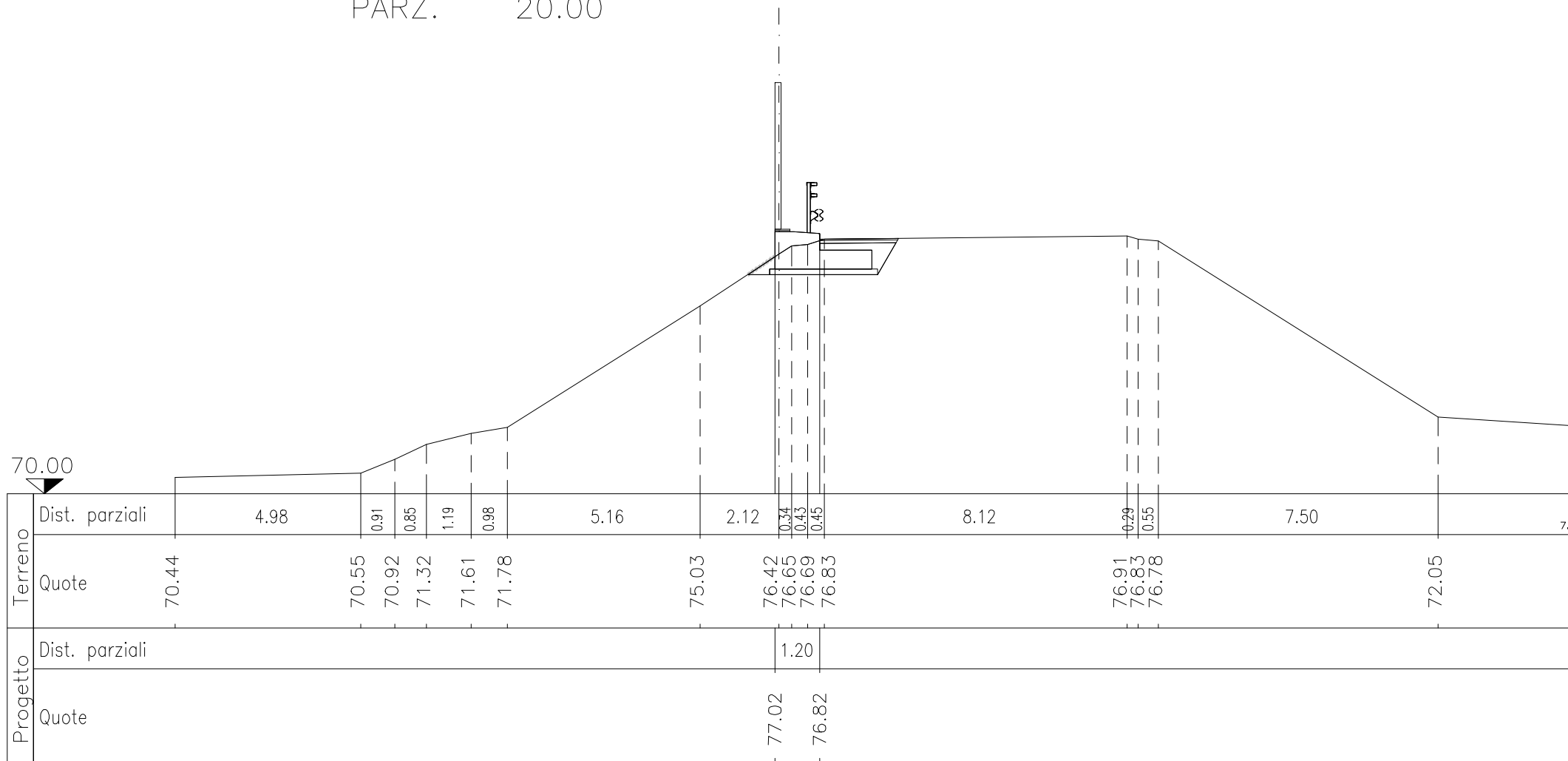
SEZ.NUM. 12 PROGR. 220.00
 PARZ. 20.00



SEZ.NUM. 13

PROGR. 240.00

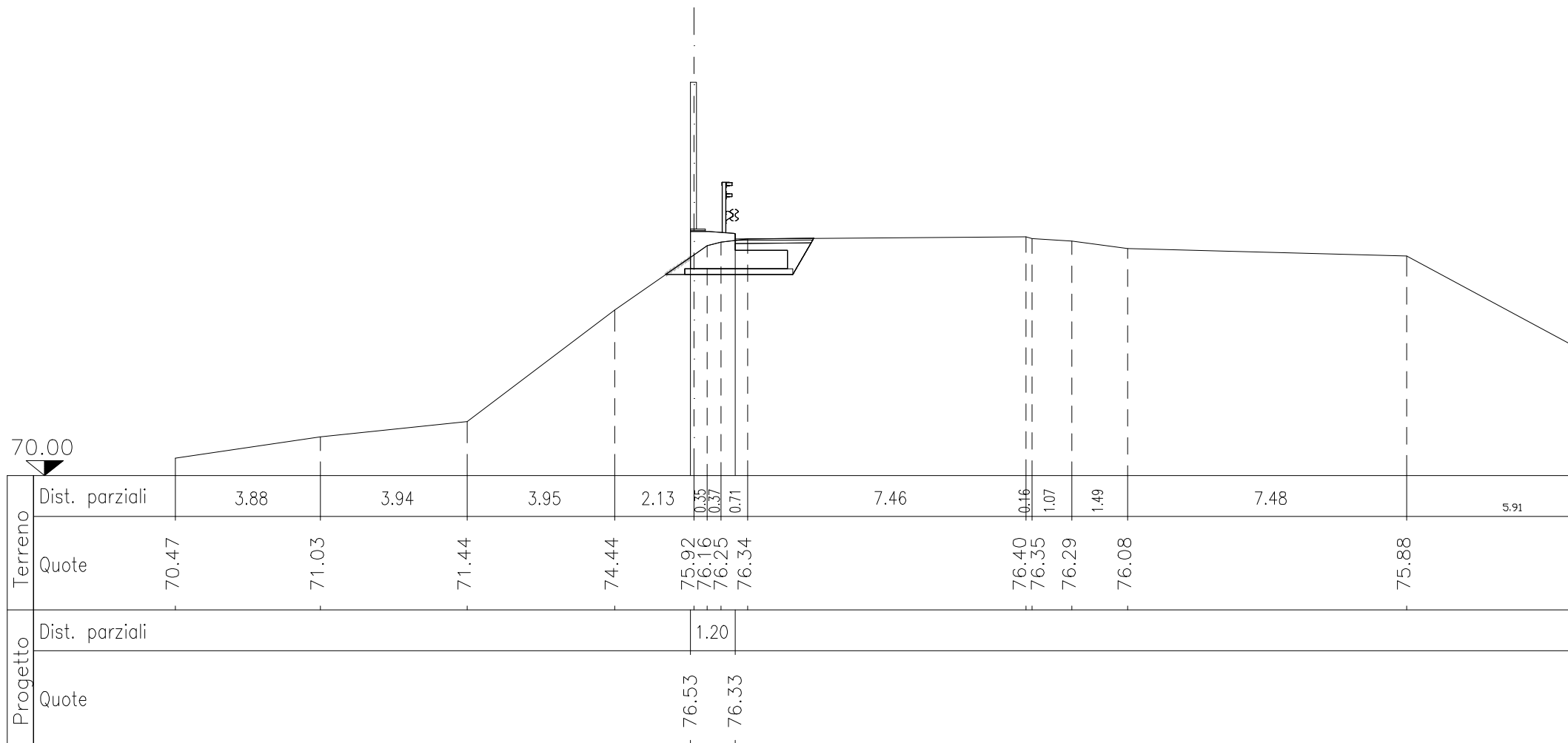
PARZ. 20.00



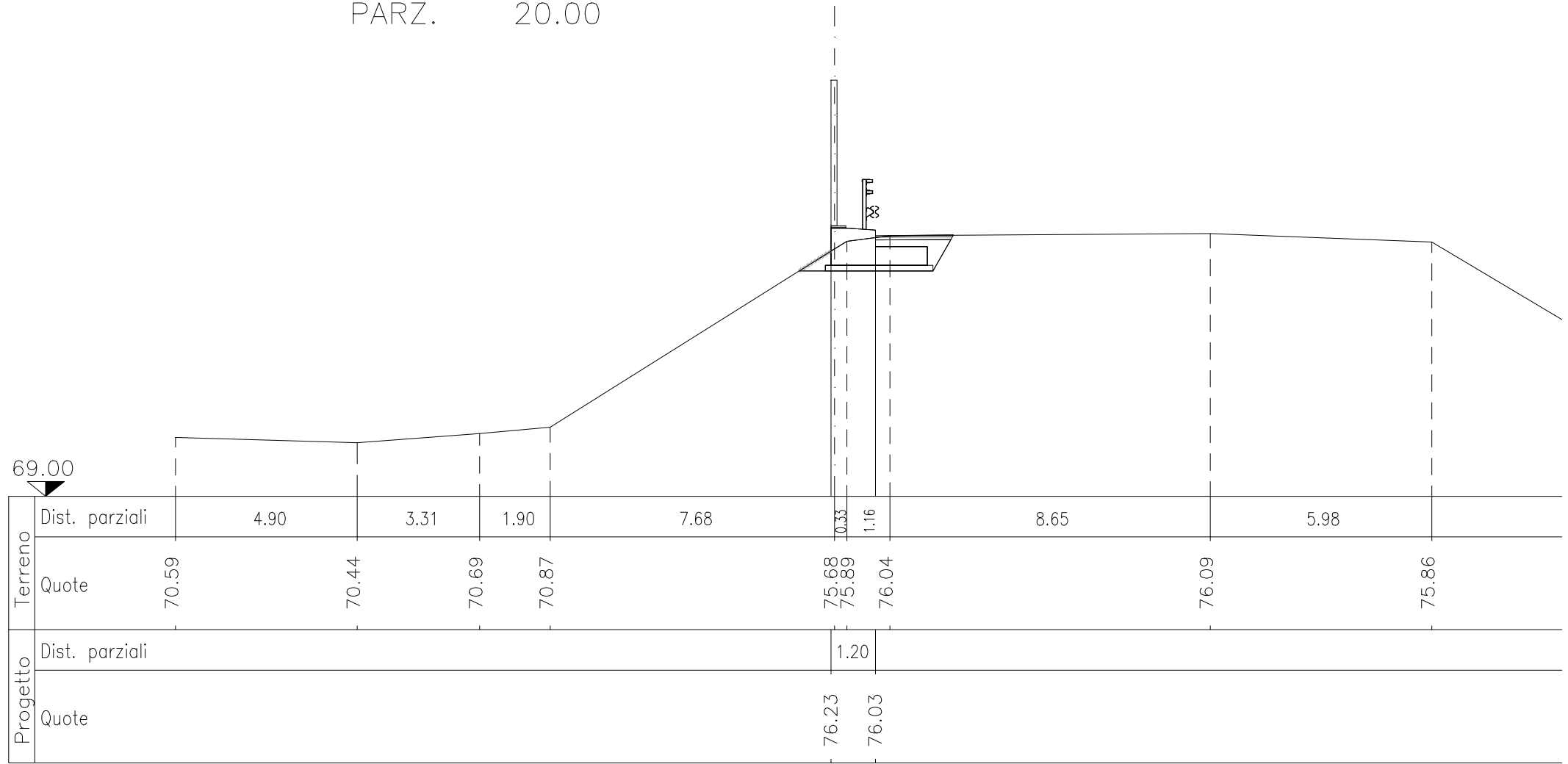
SEZ.NUM. 15

PROGR. 280.00

PARZ. 20.00



SEZ.NUM. 16 PROGR. 300.00
 PARZ. 20.00



SEZ.NUM. 17

PROGR. 320.00
 PARZ. 20.00

