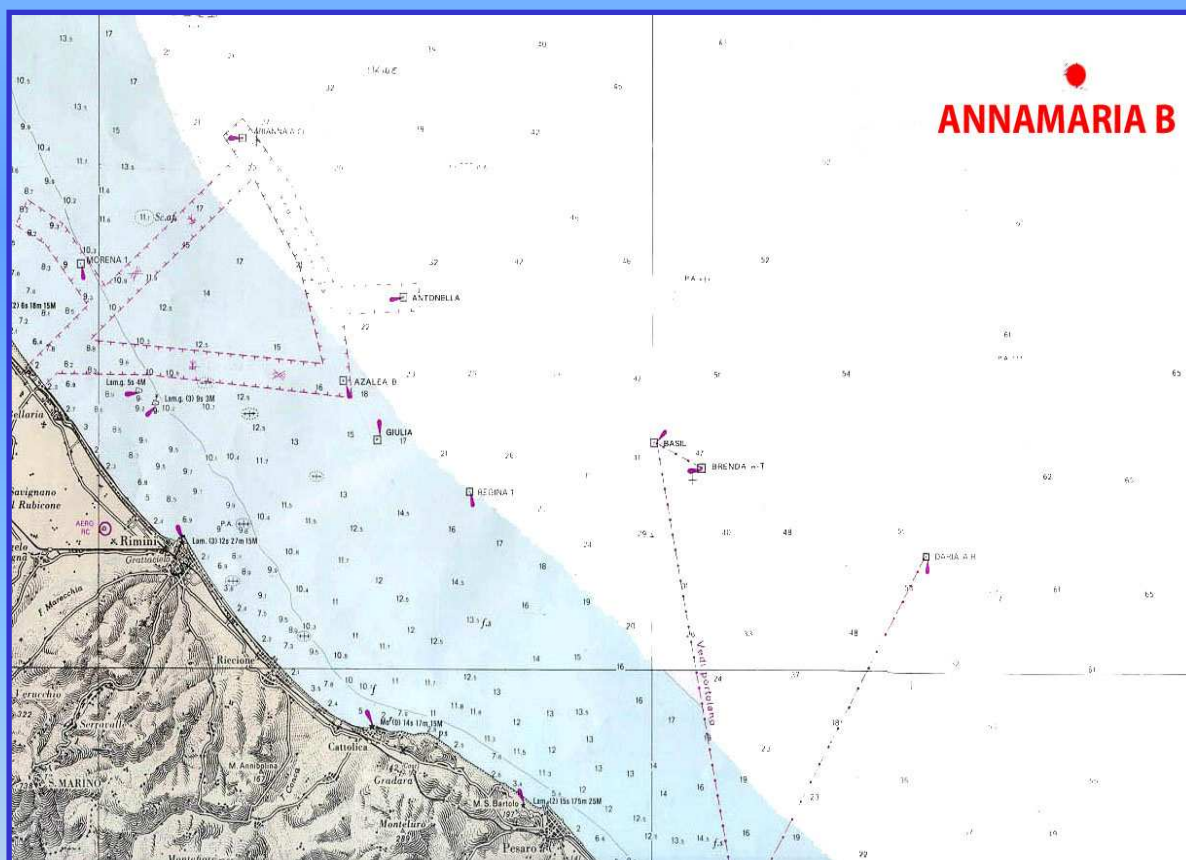




WELL SITE SURVEY **ANNAMARIA B**

Rapporto Finale

Rilievo Marzo 2006



G.A.S. s.r.l. Geological Assistance & Services
Via Nazionale, 69/A - 40065 Pianoro (BO)



G.A.S. s.r.l.

M07 - DAILY REPORT

Page 1 of 2

09/03/2006

IDP	AM400	CUSTOMER	ENI S.P.A - DIVISIONE ESPL.&PROD.(MILANO)
PROJECT	BRENDA-ANNAMARIA A-ANNAMARIA B (IKA A) SS+WS		
VESSEL	ODIN FINDER	CONTRACT	5200002071 FI1

**DATE
SITE****09/03/2006**

BRENDA ANNAMARIA A-B

TIME	EVENT	DETAILS	DESCRIPTION
00:05	EOL	Line BAB14D_Y - Fix 6433 - Depth 57.8 - Length 0	
00:06	SOL	Line BAB14E_Y - Hdg 53 - Fix 6434 - Depth 0	
01:17	EOL	Line BAB14E_Y - Fix 8362 - Depth 0 - Length 0	Total line length 37,141 km.
01:35	GEAR RECOVERED		Meggy and SSS recovered.
01:40	PROBE START		
01:55	SOUND VELOCITY PROFILE	Line SBE090306A- Lat. 4419.8353N- Lon.1325.2053E- Depth(m) 59	
02:10	PROBE END		
02:30	NAVIGATION INFO		Start minigun and SSS deploy.
03:00	GEAR DEPLOYED		All gear deployed.
03:49	SOL	Line ANB09__Q - Hdg 233 - Fix 1 - Depth 60	
04:10	EOL	Line ANB09__Q - Fix 213 - Depth 60 - Length 2120	
04:26	SOL	Line ANB19__Q - Hdg 53 - Fix 1 - Depth 58.8	
04:45	EOL	Line ANB19__Q - Fix 216 - Depth 59.9 - Length 2150	
04:58	SOL	Line ANB17__Q - Hdg 233 - Fix 1 - Depth 60.5	
05:17	EOL	Line ANB17__Q - Fix 212 - Depth 59.5 - Length 2110	
05:33	SOL	Line ANB20__Q - Hdg 53 - Fix 1 - Depth 58.7	
05:51	EOL	Line ANB20__Q - Fix 213 - Depth 59.7 - Length 2120	
06:04	SOL	Line ANB18__Q - Hdg 233 - Fix 1 - Depth 60.2	
06:24	EOL	Line ANB18__Q - Fix 213 - Depth 59.3 - Length 2120	
06:40	SOL	Line ANB25__Q - Hdg 53 - Fix 1 - Depth 59	
06:58	EOL	Line ANB25__Q - Fix 207 - Depth 60.2 - Length 2060	
07:13	SOL	Line ANB21__Q - Hdg 223 - Fix 1 - Depth 59.9	
07:31	EOL	Line ANB21__Q - Fix 211 - Depth 58.7 - Length 2100	
07:45	SOL	Line ANB15__Q - Hdg 53 - Fix 1 - Depth 59	
08:02	EOL	Line ANB15__Q - Fix 211 - Depth 59.7 - Length 2100	

Enclosed forms M02

GAS Party Chief signature

Customer Representative signature



G.A.S. s.r.l.

M07 - DAILY REPORT

Page 2 of 2

09/03/2006

IDP	AM400	CUSTOMER	ENI S.P.A - DIVISIONE ESPL.&PROD.(MILANO)
PROJECT	BRENDA-ANNAMARIA A-ANNAMARIA B (IKA A) SS+WS		
VESSEL	ODIN FINDER	CONTRACT	5200002071 FI1

08:19	SOL	Line ANB22__Q - Hdg 233 - Fix 1 - Depth 59.7	
08:38	EOL	Line ANB22__Q - Fix 219 - Depth 57.8 - Length 2180	
08:59	SOL	Line ANB14__Q - Hdg 53 - Fix 1 - Depth 59	
09:16	EOL	Line ANB14__Q - Fix 212 - Depth 59.6 - Length 2110	
09:33	SOL	Line ANB06__Q - Hdg 233 - Fix 1 - Depth 59.4	
09:44	EOL	Line ANB06__Q - Fix 135 - Depth 59.5 - Length 1340	
09:57	SOL	Line ANB13__Q - Hdg 53 - Fix 1 - Depth 58.8	
10:14	EOL	Line ANB13__Q - Fix 212 - Depth 59.5 - Length 2110	
10:29	SOL	Line ANB05__Q - Hdg 233 - Fix 1 - Depth 59.5	
10:41	EOL	Line ANB05__Q - Fix 136 - Depth 59.2 - Length 1402	
10:56	SOL	Line ANB11__Q - Hdg 53 - Fix 1 - Depth 58.6	
11:14	EOL	Line ANB11__Q - Fix 211 - Depth 59.4 - Length 2100	
11:56	GEAR RECOVERED		SSS, minigun, ministreamer, HPR pole
12:00	NAVIGATION INFO		The SSS, SBP, single channel survey interrupted due to bad weader condition.
12:12	SOL	Line ANB27__Z - Hdg 233 - Fix 1 - Depth 60	
12:31	EOL	Line ANB27__Z - Fix 200 - Depth 59 - Length 0	
12:40	GEAR RECOVERED		EM3000 pole on board
12:45	STAND BY METEO/OTHER START		Wind SE 30 Kn wave height 2-2.5m
12:50	TRANSFER START		Vessel moves to shelter in Ancona bay.
19:09	TRANSFER END		Vessel drop anchor in Ancona bay.
23:59	NAVIGATION INFO		Vessel position Lat 43°27'26"N Long 13°28'07"E

Enclosed forms M02

GAS Party Chief signature

Customer Representative signature



G.A.S. s.r.l.

M07 - DAILY REPORT

Page 1 of 1

10/03/2006

IDP	AM400	CUSTOMER	ENI S.P.A - DIVISIONE ESPL.&PROD.(MILANO)
PROJECT	BRENDA-ANNAMARIA A-ANNAMARIA B (IKA A) SS+WS		
VESSEL	ODIN FINDER	CONTRACT	5200002071 FI1

DATE **10/03/2006**
SITE **BRENDA ANNAMARIA A-B**

TIME	EVENT	DETAILS	DESCRIPTION
06:00	METEO WIND		Direction S-SE, sea force 5.
06:45	TRANSFER START		Vessel moves to survey area.
07:55	NAVIGATION INFO		Vessel go back for bad weather condition.
09:00	TRANSFER END		Vessel at anchor in Ancona bay.
13:30	TRANSFER START		Vessel moves to survey area.
21:05	TRANSFER END		
21:10	STAND BY METEO/OTHER END		
21:20	SOUND VELOCITY PROFILE	Line SBE1003A- Lat. 4417.2432N- Lon.1323.943E- Depth(m) 58	
21:30	NAVIGATION INFO		Start minigun, Streamer, SSS, EM3000, HPR pole deploy.
21:50	GEAR DEPLOYED		Minigun, Streamer, SSS, EM3000, HPR pole
22:25	NAVIGATION INFO		Technical problem with compressor. We shoot the lines without minigun requirement.
22:40	SOL	Line ANB28__Z - Hdg 233 - Fix 1 - Depth 60	
23:01	EOL	Line ANB28__Z - Fix 224 - Depth 59 - Length 2352	
23:17	SOL	Line ANB29__Z - Hdg 53 - Fix 1 - Depth 60	
23:29	EOL	Line ANB29__Z - Fix 134 - Depth 59.8 - Length 1406	
23:48	GEAR RECOVERED		Minigun, ministreamer.
23:50	GEAR DEPLOYED		Magnetometer.
23:59	NAVIGATION INFO		Vessel position: Lat 44° 18' 514 N Long 13° 26' 577 E.

Enclosed forms M02

GAS Party Chief signature

Customer Representative signature



G.A.S. s.r.l.

M07 - DAILY REPORT

Page 1 of 3

16/03/2006

IDP	AM400	CUSTOMER	ENI S.P.A - DIVISIONE ESPL.&PROD.(MILANO)
PROJECT	BRENDA-ANNAMARIA A-ANNAMARIA B (IKA A) SS+WS		
VESSEL	ODIN FINDER	CONTRACT	5200002071 FI1

**DATE
SITE****16/03/2006****BRENDA ANNAMARIA A-B**

TIME	EVENT	DETAILS	DESCRIPTION
00:16	SOL	Line ANA12__Q - Hdg 242 - Fix 1 - Depth 57.1	
00:35	EOL	Line ANA12__Q - Fix 215 - Depth 56.44 - Length 2215	
00:56	SOL	Line ANA21__Q - Hdg 62 - Fix 1 - Depth 56.9	
01:09	EOL	Line ANA21__Q - Fix 133 - Depth 57.3 - Length 1374	
01:28	SOL	Line ANA14__Q - Hdg 242 - Fix 1 - Depth 56.7	
01:48	EOL	Line ANA14__Q - Fix 212 - Depth 56 - Length 2216	
02:04	SOL	Line ANA02__Q - Hdg 62 - Fix 1 - Depth 56.7	
02:24	EOL	Line ANA02__Q - Fix 203 - Depth 57.3 - Length 2129	
02:35	GEAR RECOVERED		Some problem with minigun floating. Start recovering minigun.
03:06	GEAR DEPLOYED		Minigun deployed.
03:14	SOL	Line ANA16__Q - Hdg 242 - Fix 1 - Depth 56.5	
03:35	EOL	Line ANA16__Q - Fix 211 - Depth 55.6 - Length 2191	
03:49	SOL	Line ANA13__Q - Hdg 62 - Fix 1 - Depth 56.1	
04:12	EOL	Line ANA13__Q - Fix 215 - Depth 56.7 - Length 2201	
04:27	SOL	Line ANA17__Q - Hdg 242 - Fix 1 - Depth 56.3	
04:47	EOL	Line ANA17__Q - Fix 214 - Depth 55.6 - Length 2237	
05:00	SOL	Line ANA15__Q - Hdg 62 - Fix 1 - Depth 55.7	
05:22	EOL	Line ANA15__Q - Fix 213 - Depth 56.6 - Length 2207	
06:19	SOL	Line ANA25__Q - Hdg 332 - Fix 1 - Depth 57.7	
06:32	EOL	Line ANA25__Q - Fix 138 - Depth 56.5 - Length 1445	
06:45	SOL	Line ANA24__Q - Hdg 152 - Fix 1 - Depth 56.3	
07:00	EOL	Line ANA24__Q - Fix 144 - Depth 57.6 - Length 1479	
07:14	SOL	Line ANA26__Q - Hdg 332 - Fix 1 - Depth 57.7	
07:26	EOL	Line ANA26__Q - Fix 134 - Depth 56.4 - Length 1402	
07:40	SOL	Line ANA23__Q - Hdg 152 - Fix 1 - Depth 56.4	

Enclosed forms M02

GAS Party Chief signature

Customer Representative signature



G.A.S. s.r.l.

M07 - DAILY REPORT

Page 2 of 3

16/03/2006

IDP	AM400	CUSTOMER	ENI S.P.A - DIVISIONE ESPL.&PROD.(MILANO)
PROJECT	BRENDA-ANNAMARIA A-ANNAMARIA B (IKA A) SS+WS		
VESSEL	ODIN FINDER	CONTRACT	5200002071 FI1

07:54	EOL	Line ANA23__Q - Fix 136 - Depth 57.7 - Length 1399	
08:00	DEMOB START		Start demob analogic equipment.
08:05	DEMOB INFO		Start gear recovering.
08:40	GEAR RECOVERED		SSS, minigun, ministreamer, multibeam pole.
10:20	DEMOB END		
10:30	MOB START		MOB digital survey start.
11:00	GEAR DEPLOYED		Gun deployed.
11:30	MOB INFO		Start deploy the streamer.
12:30	GEAR DEPLOYED		Streamer deployed.
13:00	MOB INFO		Start testing TAP syystem.
14:30	MOB END		Test ok, vessel moves to start the line.
15:06	SOL	Line ANBD24__ - Hdg 310 - Fix 100 - Depth 0	
15:28	EOL	Line ANBD24__ - Fix 287 - Depth 0 - Length 2399	
15:51	SOL	Line ANBD18__ - Hdg 130 - Fix 100 - Depth 0	
16:12	EOL	Line ANBD18__ - Fix 287 - Depth 0 - Length 2457	
17:14	SOL	Line ANBD23__ - Hdg 310 - Fix 100 - Depth 0	
17:36	EOL	Line ANBD23__ - Fix 287 - Depth 0 - Length 2433	
18:02	SOL	Line ANBD20__ - Hdg 130 - Fix 100 - Depth 0	
18:24	EOL	Line ANBD20__ - Fix 287 - Depth 0 - Length 2396	
19:15	SOL	Line ANBD22__ - Hdg 310 - Fix 100 - Depth 0	
19:37	EOL	Line ANBD22__ - Fix 287 - Depth 0 - Length 2411	
19:58	SOL	Line ANBD21__ - Hdg 130 - Fix 100 - Depth 0	
20:20	EOL	Line ANBD21__ - Fix 287 - Depth 0 - Length 2391	
20:35	SOL	Line ANBD19__ - Hdg 310 - Fix 100 - Depth 0	
20:56	EOL	Line ANBD19__ - Fix 287 - Depth 0 - Length 2443	
21:23	SOL	Line ANBD25__ - Hdg 175 - Fix 100 - Depth 0	
21:52	EOL	Line ANBD25__ - Fix 352 - Depth 0 - Length 3274	
22:21	SOL	Line ANBD01__ - Hdg 40 - Fix 100 - Depth 0	

Enclosed forms M02

GAS Party Chief signature

Customer Representative signature



G.A.S. s.r.l.

M07 - DAILY REPORT

Page 3 of 3

16/03/2006

IDP	AM400	CUSTOMER	ENI S.P.A - DIVISIONE ESPL.&PROD.(MILANO)
PROJECT	BRENDA-ANNAMARIA A-ANNAMARIA B (IKA A) SS+WS		
VESSEL	ODIN FINDER	CONTRACT	5200002071 F11

22:44 EOL Line ANBD01__ - Fix 287 - Depth 0 - Length 2429

23:04 SOL Line ANBD17__ - Hdg 220 - Fix 100 - Depth 0

23:24 EOL Line ANBD17__ - Fix 287 - Depth 0 - Length 2437

23:45 SOL Line ANBD02__ - Hdg 40 - Fix 100 - Depth 0

23:59 NAVIGATION INFO

Vessel position: Lat 44° 20' 08" N
Long 13° 25' 19" E.

Enclosed forms M02

GAS Party Chief signature

Customer Representative signature



G.A.S. s.r.l.

M07 - DAILY REPORT

Page 1 of 4

17/03/2006

IDP	AM400	CUSTOMER	ENI S.P.A - DIVISIONE ESPL.&PROD.(MILANO)
PROJECT	BRENDA-ANNAMARIA A-ANNAMARIA B (IKA A) SS+WS		
VESSEL	ODIN FINDER	CONTRACT	5200002071 FI1

**DATE
SITE****17/03/2006****BRENDA ANNAMARIA A-B**

TIME	EVENT	DETAILS	DESCRIPTION
00:09	EOL	Line ANBD02__ - Fix 290 - Depth 0 - Length 2460	
00:25	SOL	Line ANBD16__ - Hdg 220 - Fix 100 - Depth 0	
00:47	EOL	Line ANBD16__ - Fix 300 - Depth 0 - Length 2592	
01:11	SOL	Line ANBD03__ - Hdg 40 - Fix 100 - Depth 0	
01:34	EOL	Line ANBD03__ - Fix 297 - Depth 0 - Length 2550	
01:58	SOL	Line ANBD15__ - Hdg 220 - Fix 100 - Depth 0	
02:20	EOL	Line ANBD15__ - Fix 297 - Depth 0 - Length 2544	
02:44	SOL	Line ANBD04__ - Hdg 40 - Fix 100 - Depth 0	
03:09	EOL	Line ANBD04__ - Fix 299 - Depth 0 - Length 2549	
03:29	SOL	Line ANBD14__ - Hdg 220 - Fix 100 - Depth 0	
03:51	EOL	Line ANBD14__ - Fix 296 - Depth 0 - Length 2539	
04:15	SOL	Line ANBD05__ - Hdg 40 - Fix 100 - Depth 0	
04:37	EOL	Line ANBD05__ - Fix 284 - Depth 0 - Length 2392	
04:56	SOL	Line ANBD13__ - Hdg 220 - Fix 100 - Depth 0	
05:19	EOL	Line ANBD13__ - Fix 286 - Depth 0 - Length 2398	
05:39	SOL	Line ANBD06 - Hdg 40 - Fix 100 - Depth 0	
06:02	EOL	Line ANBD06 - Fix 286 - Depth 0 - Length 2395	
06:21	SOL	Line ANBD12__ - Hdg 220 - Fix 100 - Depth 0	
06:42	EOL	Line ANBD12__ - Fix 285 - Depth 0 - Length 2398	
07:05	SOL	Line ANBD07__ - Hdg 40 - Fix 100 - Depth 0	
07:27	EOL	Line ANBD07__ - Fix 284 - Depth 0 - Length 2395	
07:47	SOL	Line ANBD11__ - Hdg 220 - Fix 100 - Depth 0	
08:07	EOL	Line ANBD11__ - Fix 283 - Depth 0 - Length 2399	
08:38	SOL	Line ANBD08__ - Hdg 40 - Fix 100 - Depth 0	
08:58	EOL	Line ANBD08__ - Fix 285 - Depth 0 - Length 2397	
09:19	SOL	Line ANBD10__ - Hdg 220 - Fix 100 - Depth 0	

Enclosed forms M02

GAS Party Chief signature

Customer Representative signature



G.A.S. s.r.l.

M07 - DAILY REPORT

Page 2 of 4

17/03/2006

IDP	AM400	CUSTOMER	ENI S.P.A - DIVISIONE ESPL.&PROD.(MILANO)
PROJECT	BRENDA-ANNAMARIA A-ANNAMARIA B (IKA A) SS+WS		
VESSEL	ODIN FINDER	CONTRACT	5200002071 FI1

09:37	EOL	Line ANBD10__ - Fix 287 - Depth 0 - Length 2440	
10:21	SOL	Line ANBD09 - Hdg 40 - Fix 100 - Depth 0	
10:44	EOL	Line ANBD09 - Fix 286 - Depth 0 - Length 2402	
11:24	SOL	Line ANBD26__ - Hdg 265 - Fix 100 - Depth 0	
11:53	EOL	Line ANBD26__ - Fix 348 - Depth 0 - Length 3232	
13:18	GEAR RECOVERED		Seismic equipment on board
13:20	NAVIGATION INFO		vessel moves to Annamaria A site
13:30	GEAR DEPLOYED		Maggy and SBP
13:42	SOL	Line ANA17__G - Hdg 180 - Fix 1 - Depth 58	
13:49	EOL	Line ANA17__G - Fix 151 - Depth 58 - Length 691	
13:55	SOL	Line ANA09__G - Hdg 0 - Fix 152 - Depth 58	
14:03	EOL	Line ANA09__G - Fix 310 - Depth 58 - Length 716	
14:10	SOL	Line ANA08__G - Hdg 180 - Fix 311 - Depth 58	
14:16	EOL	Line ANA08__G - Fix 454 - Depth 58 - Length 666	
14:25	SOL	Line ANA10__G - Hdg 360 - Fix 455 - Depth 58	
14:31	EOL	Line ANA10__G - Fix 605 - Depth 58 - Length 692	
14:38	SOL	Line ANA07__G - Hdg 180 - Fix 606 - Depth 58	
14:44	EOL	Line ANA07__G - Fix 762 - Depth 58 - Length 709	
14:52	SOL	Line ANA11__G - Hdg 360 - Fix 763 - Depth 58	
14:57	EOL	Line ANA11__G - Fix 894 - Depth 58 - Length 616	
15:04	SOL	Line ANA06__G - Hdg 180 - Fix 895 - Depth 58	
15:10	EOL	Line ANA06__G - Fix 1049 - Depth 58 - Length 680	
15:18	SOL	Line ANA12__G - Hdg 360 - Fix 1 - Depth 58	
15:23	EOL	Line ANA12__G - Fix 139 - Depth 58 - Length 650	
15:31	SOL	Line ANA05__G - Hdg 180 - Fix 1050 - Depth 58	
15:36	EOL	Line ANA05__G - Fix 1194 - Depth 58 - Length 668	
15:42	SOL	Line ANA13__G - Hdg 360 - Fix 1195 - Depth 58	
15:48	EOL	Line ANA13__G - Fix 1338 - Depth 58 - Length 653	

Enclosed forms M02

GAS Party Chief signature

Customer Representative signature



G.A.S. s.r.l.

M07 - DAILY REPORT

Page 3 of 4

17/03/2006

IDP	AM400	CUSTOMER	ENI S.P.A - DIVISIONE ESPL.&PROD.(MILANO)
PROJECT	BRENDA-ANNAMARIA A-ANNAMARIA B (IKA A) SS+WS		
VESSEL	ODIN FINDER	CONTRACT	5200002071 FI1

15:55	SOL	Line ANA04__G - Hdg 180 - Fix 1339 - Depth 58	
16:00	EOL	Line ANA04__G - Fix 1485 - Depth 58 - Length 664	
16:07	SOL	Line ANA14__G - Hdg 360 - Fix 1486 - Depth 58	
16:13	EOL	Line ANA14__G - Fix 1630 - Depth 58 - Length 640	
16:21	SOL	Line ANA03__G - Hdg 180 - Fix 1631 - Depth 58	
16:27	EOL	Line ANA03__G - Fix 1775 - Depth 58 - Length 675	
16:34	SOL	Line ANA15__G - Hdg 360 - Fix 1776 - Depth 58	
16:39	EOL	Line ANA15__G - Fix 1928 - Depth 58 - Length 689	
16:47	SOL	Line ANA02__G - Hdg 180 - Fix 1929 - Depth 58	
16:52	EOL	Line ANA02__G - Fix 2078 - Depth 58 - Length 667	
17:00	SOL	Line ANA16__G - Hdg 360 - Fix 2079 - Depth 58	
17:05	EOL	Line ANA16__G - Fix 2231 - Depth 58 - Length 677	
17:12	SOL	Line ANA01__G - Hdg 180 - Fix 2232 - Depth 58	
17:17	EOL	Line ANA01__G - Fix 2377 - Depth 58 - Length 665	
17:40	GEAR RECOVERED		maggy and SBP
18:00	SOUND VELOCITY PROFILE	Line SBE1703A- Lat. 4422.2- Lon.1322.19- Depth(m) 58	
18:50	GEAR DEPLOYED		SSS maggy MB HPR SBP
19:02	SOL	Line ABA11__Y - Hdg 152 - Fix 1 - Depth 58	
19:55	EOL	Line ABA11__Y - Fix 1250 - Depth 60 - Length 5516	
20:21	SOL	Line ABA13__Y - Hdg 332 - Fix 1251 - Depth 60	
21:08	EOL	Line ABA13__Y - Fix 2453 - Depth 0 - Length 5432	
21:34	SOL	Line ANA27__Z - Hdg 242 - Fix 1 - Depth 58	
21:54	EOL	Line ANA27__Z - Fix 495 - Depth 0 - Length 2230	
22:06	SOL	Line ANA28__Z - Hdg 62 - Fix 496 - Depth 57	
22:10	EOL	Line ANA28__Z - Fix 564 - Depth 0 - Length 302	
22:35	SOL	Line ABA01__Y - Hdg 62 - Fix 2454 - Depth 58.6	
22:48	EOL	Line ABA01__Y - Fix 2748 - Depth 59.9 - Length 1308	
23:12	SOL	Line ANB16__G - Hdg 180 - Fix 1 - Depth 59.2	

Enclosed forms M02

GAS Party Chief signature

Customer Representative signature



G.A.S. s.r.l.

M07 - DAILY REPORT

Page 4 of 4

17/03/2006

IDP	AM400	CUSTOMER	ENI S.P.A - DIVISIONE ESPL.&PROD.(MILANO)
PROJECT	BRENDA-ANNAMARIA A-ANNAMARIA B (IKA A) SS+WS		
VESSEL	ODIN FINDER	CONTRACT	5200002071 FI1

23:17 EOL Line ANB16__G - Fix 140 - Depth 59.7 - Length 643

23:27 SOL Line ANB03__G - Hdg 0 - Fix 141 - Depth 59.7

23:33 EOL Line ANB03__G - Fix 288 - Depth 59.3 - Length 665

23:45 SOL Line ANB15__G - Hdg 180 - Fix 289 - Depth 55.1

23:52 EOL Line ANB15__G - Fix 435 - Depth 59.6 - Length 652

23:59 NAVIGATION INFO

Vessel position: Lat 44° 19' 17" N
Long 13° 24' 34" E.

Enclosed forms M02

GAS Party Chief signature

Customer Representative signature



G.A.S. s.r.l.

M07 - DAILY REPORT

Page 1 of 3

18/03/2006

IDP	AM400	CUSTOMER	ENI S.P.A - DIVISIONE ESPL.&PROD.(MILANO)
PROJECT	BRENDA-ANNAMARIA A-ANNAMARIA B (IKA A) SS+WS		
VESSEL	ODIN FINDER	CONTRACT	5200002071 FI1

**DATE
SITE****18/03/2006****BRENDA ANNAMARIA A-B**

TIME	EVENT	DETAILS	DESCRIPTION
00:03	SOL	Line ANB04__G - Hdg 0 - Fix 436 - Depth 59.8	
00:09	EOL	Line ANB04__G - Fix 584 - Depth 59.6 - Length 658	
00:19	SOL	Line ANB14__G - Hdg 180 - Fix 585 - Depth 59.4	
00:24	EOL	Line ANB14__G - Fix 724 - Depth 59.6 - Length 658	
00:35	SOL	Line ANB05__G - Hdg 0 - Fix 725 - Depth 60	
00:42	EOL	Line ANB05__G - Fix 874 - Depth 59.2 - Length 671	
00:52	SOL	Line ANB13__G - Hdg 180 - Fix 875 - Depth 59.2	
00:57	EOL	Line ANB13__G - Fix 1010 - Depth 59.7 - Length 630	
01:08	SOL	Line ANB06__G - Hdg 0 - Fix 1011 - Depth 59.6	
01:14	EOL	Line ANB06__G - Fix 1157 - Depth 59.3 - Length 664	
01:25	SOL	Line ANB12__G - Hdg 180 - Fix 1158 - Depth 59.2	
01:30	EOL	Line ANB12__G - Fix 1299 - Depth 59.6 - Length 633	
01:40	SOL	Line ANB07__G - Hdg 0 - Fix 1300 - Depth 59.7	
01:46	EOL	Line ANB07__G - Fix 1443 - Depth 59.3 - Length 636	
01:57	SOL	Line ANB11__G - Hdg 180 - Fix 1444 - Depth 58.9	
02:03	EOL	Line ANB11__G - Fix 1589 - Depth 59.5 - Length 648	
02:13	SOL	Line ANB09__G - Hdg 0 - Fix 1590 - Depth 59.6	
02:19	EOL	Line ANB09__G - Fix 1735 - Depth 59.5 - Length 652	
02:28	SOL	Line ANB10__G - Hdg 180 - Fix 1736 - Depth 59	
02:34	EOL	Line ANB10__G - Fix 1878 - Depth 59.5 - Length 648	
02:45	SOL	Line ANB17__G - Hdg 0 - Fix 1879 - Depth 59.5	
02:51	EOL	Line ANB17__G - Fix 2026 - Depth 59.1 - Length 664	
03:00	SOL	Line ANB01__G - Hdg 180 - Fix 2027 - Depth 58.8	
03:06	EOL	Line ANB01__G - Fix 2177 - Depth 59.4 - Length 669	ANB finished.
03:10	NAVIGATION INFO		Vessel moves to start sealine (about 3km).
03:52	SOL	Line BAB19__Y - Hdg 233 - Fix 1 - Depth 58.8	

Enclosed forms M02

GAS Party Chief signature

Customer Representative signature



G.A.S. s.r.l.

M07 - DAILY REPORT

Page 2 of 3

18/03/2006

IDP	AM400	CUSTOMER	ENI S.P.A - DIVISIONE ESPL.&PROD.(MILANO)
PROJECT	BRENDA-ANNAMARIA A-ANNAMARIA B (IKA A) SS+WS		
VESSEL	ODIN FINDER	CONTRACT	5200002071 FI1

04:52	EOL	Line BAB19__Y - Fix 1561 - Depth 57.4 - Length 0	
04:53	SOL	Line BAB19A_Y - Hdg 233 - Fix 1562 - Depth 57.4	
05:52	EOL	Line BAB19A_Y - Fix 3039 - Depth 56.4 - Length 0	
05:53	SOL	Line BAB19B_Y - Hdg 233 - Fix 3040 - Depth 56.4	
06:52	EOL	Line BAB19B_Y - Fix 4538 - Depth 54.5 - Length 0	
06:53	SOL	Line BAB19C_Y - Hdg 233 - Fix 4539 - Depth 54.5	
07:52	EOL	Line BAB19C_Y - Fix 6024 - Depth 53.7 - Length 0	
07:53	SOL	Line BAB19D_Y - Hdg 233 - Fix 6025 - Depth 53.7	
08:52	EOL	Line BAB19D_Y - Fix 7559 - Depth 51.9 - Length 0	
08:53	SOL	Line BAB19E_Y - Hdg 223 - Fix 7560 - Depth 51.9	
09:18	EOL	Line BAB19E_Y - Fix 8220 - Depth 47.5 - Length 37124	
09:40	GEAR RECOVERED		
09:42	TRANSFER START		Start transfer to Pesaro.
12:00	TRANSFER END		Offshore Pesaro for crew change
12:30	PERSONNEL EVENT		People out: Vic Gosling, James Brand, Steven Read, Romano Cosi, Gabriele Busanello.
12:31	PERSONNEL EVENT		People in: Maurizio Prodan
12:35	TRANSFER START		transfer to work area
14:10	TRANSFER END		
14:15	SOUND VELOCITY PROFILE	Line SBE1803A- Lat. 4406.5- Lon.1301.6- Depth(m) 45	
15:00	GEAR DEPLOYED		SSS, SBP, Maggy, EM3000
15:38	SOL	Line BAB20__Y - Hdg 53 - Fix 8221 - Depth 47	
16:38	EOL	Line BAB20__Y - Fix 9685 - Depth 53 - Length 0	
16:39	SOL	Line BAB20A_Y - Hdg 53 - Fix 9686 - Depth 53	
17:39	EOL	Line BAB20A_Y - Fix 11193 - Depth 53 - Length 0	
17:40	SOL	Line BAB20B_Y - Hdg 53 - Fix 11194 - Depth 53	
18:39	EOL	Line BAB20B_Y - Fix 12596 - Depth 55 - Length 0	
18:40	SOL	Line BAB20C_Y - Hdg 53 - Fix 12597 - Depth 55	

Enclosed forms M02

GAS Party Chief signature

Customer Representative signature



G.A.S. s.r.l.

M07 - DAILY REPORT

Page 3 of 3

18/03/2006

IDP	AM400	CUSTOMER	ENI S.P.A - DIVISIONE ESPL.&PROD.(MILANO)
PROJECT	BRENDA-ANNAMARIA A-ANNAMARIA B (IKA A) SS+WS		
VESSEL	ODIN FINDER	CONTRACT	5200002071 F11

19:40	EOL	Line BAB20C_Y - Fix 14134 - Depth 57 - Length 0	
19:41	SOL	Line BAB20D_Y - Hdg 53 - Fix 14135 - Depth 57	
20:41	EOL	Line BAB20D_Y - Fix 15605 - Depth 58 - Length 0	
20:42	SOL	Line BAB20E_Y - Hdg 53 - Fix 15606 - Depth 58	
20:55	EOL	Line BAB20E_Y - Fix 15939 - Depth 58 - Length 0	LINE INTERRUPTED
21:19	SOL	Line BAB20L_Y - Hdg 53 - Fix 15940 - Depth 55	
21:40	EOL	Line BAB20L_Y - Fix 16679 - Depth 58 - Length 37204	
22:04	SOL	Line BAB16__Y - Hdg 233 - Fix 1 - Depth 58	
23:04	EOL	Line BAB16__Y - Fix 1575 - Depth 57 - Length 0	
23:05	SOL	Line BAB16A_Y - Hdg 233 - Fix 1576 - Depth 57	
23:59	NAVIGATION INFO		Vessel position: Lat 44° 15' 05" N Long 13° 14' 00" E.

Enclosed forms M02

GAS Party Chief signature

Customer Representative signature



G.A.S. s.r.l.

OFFSET FORM (M011)

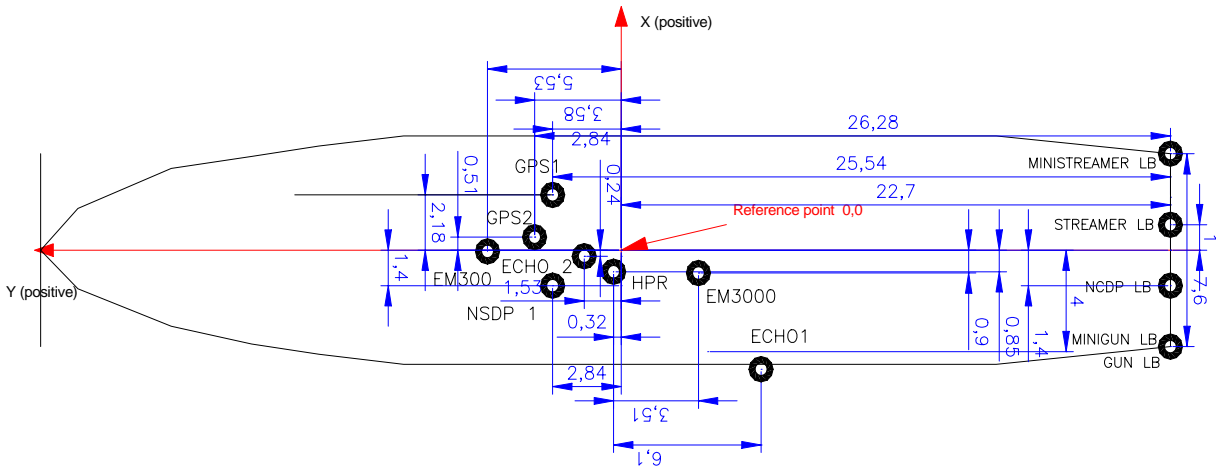
Rev.00

N. :

Page 1 of 1

IDP	DATE	PARTY CHIEF	PROJECT	CLIENT	VESSEL
AM400A	16/03/2006	R. COSI	ANNAMARIA B WSS	ENI spa	R/V ODIN FINDER
OFFSET (in metres)			+ forward/ - backward	+ right/ - left	Notes
Antenna 1 TRIMBLE -/Stern (A)			-25.54	2.18	
Antenna 2 NAVCOM /Stern			-26.28	-0.51	
Antenna 1/ Antenna 2			1.66	-0.74	
Antenna 1/ Gun layback			-25.54	-5.98	
Antenna 1/ Streamer layback			-25.54	-1.18	
Antenna 1/ NCDP layback			-25.54	-3.58	
Gun / Stern (B)			30	3.8	
Gun / Antenna 1 (C) (C = A + B)			55.54	5.96	
Streamer / Gun (D)			25	-4.8	
NCDP = (A + B + D/2)		68.04			
Birds #	Bird 1	Bird 2	Bird 3	Bird 4	
Channels					

OFFSET SKETCH



GEOLOGICAL ASSISTANCE & SERVICE®

Rev. Date	File:	Page
20/08/01	M011_AM400A-MULTICHANNEL-OFFSET.doc	1 of 1



G.A.S. s.r.l.

OFFSET FORM (M011)

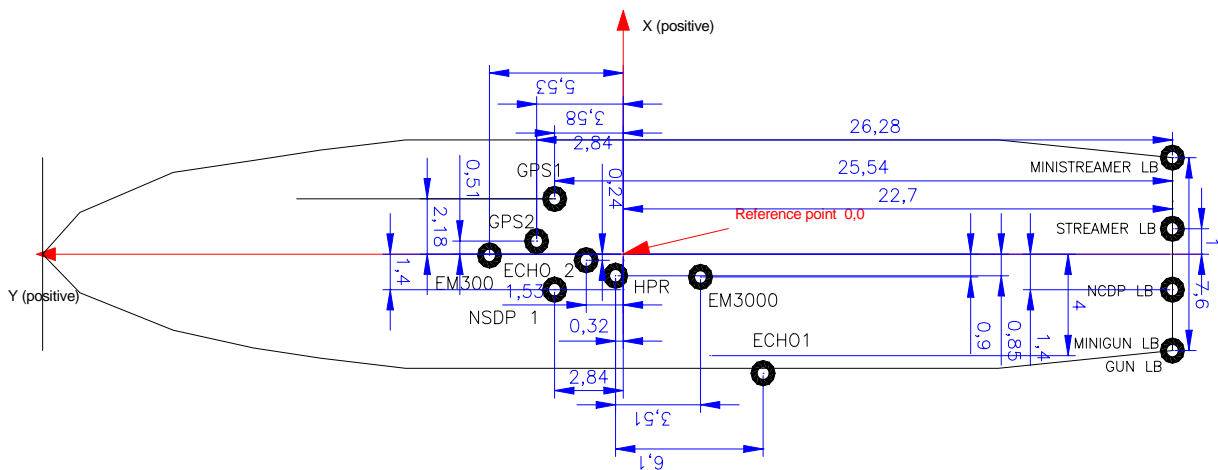
Rev.00

N. :

Page 1 of 1

IDP	DATE	PARTY CHIEF	PROJECT	CLIENT	VESSEL
AM400	12/03/2006	R. COSI	WSS ANNAMARIA B	ENI spa	R/V ODIN FINDER
OFFSET (in metres)			+ forward/ - backward	+ right/ - left	Notes
Antenna 1 TRIMBLE -/Stern (A)			-25.54	2.18	
Antenna 2 NAVCOM /Stern			-26.28	-0.51	
Antenna 1/ Antenna 2			1.66	-0.74	
Antenna 1 / Minigun layback			-25.54	-5.98	
Antenna 1 / Ministreamer layback			-25.54	1.62	
Multibeam/ Antenna 1			-6.03	-3.07	
HPR/Antenna 1			-2.52	-3.03	
SSS/ Antenna 1			-25.54		Cable out see field log
Magnetometer/ Antenna 1			-25.54	-5.97	Cable out 30m
SBP/ Antenna 1			-1.94	-0.66	
Antenna 1/ NCDP layback			-25.54	-3.58	
Minigun / Stern			25	3.8	
Ministreamer / Stern			33	3.8	
Ministreamer / Minigun			8	-7.6	
NCDP = (A + B + D/2)					
Birds #	Bird 1	Bird 2	Bird 3	Bird 4	
Channels					

OFFSET SKETCH




 GEOLOGICAL ASSISTANCE & SERVICES

Rev. Date	File:	Page
20/08/01	M011_AM400A-Annamaria B WSS offset.doc	1 of 1



G.A.S. s.r.l.

CALIBRATION FORM: SPEED OF SOUND (M021) - REV.01

N. :
PAGE 1 OF 1

IDP: AM400

PROJECT: Brenda Annamaria A-B SS e WS

GEOGRAPHIC LOCATION: NORTH ADRIATIC SEA

AREA: Annamaria B

CLIENT : ENI E&P

DATE: 09/03/06

VESSEL: ODIN FINDER

Reference Quality Procedure : QP012

OPERATOR: Tarenghi

Latitude

Longitude

EASTING

NORTHING

44°19.8353'N

13°25.2052'E

374036.99

4909805.47

Probe type: SEABIRD SBE 19-02

Serial Number: 1921168-2813

attached monograph

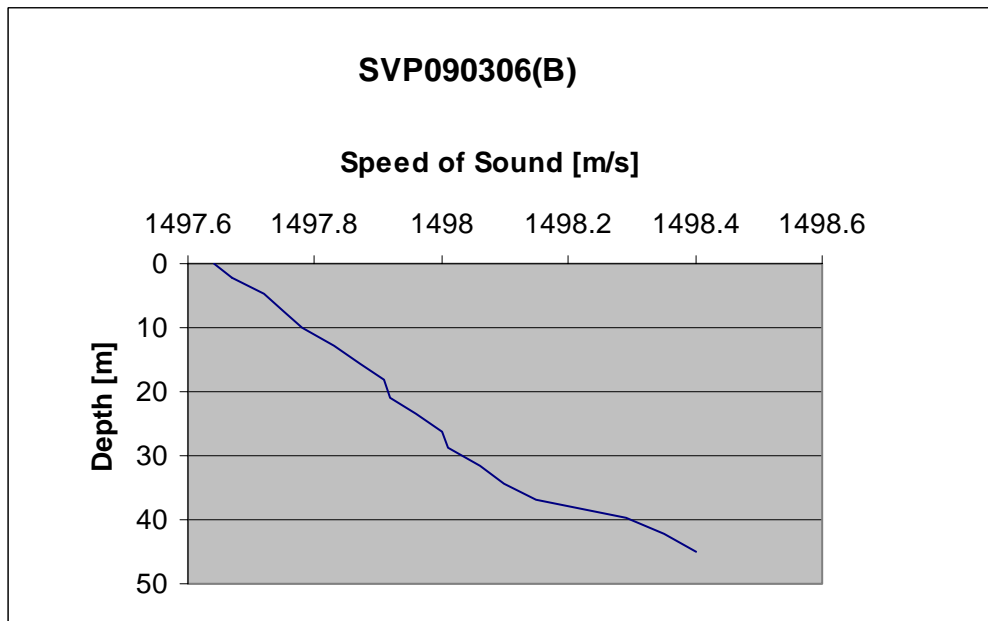
Data File (complete path):

attached file print

Speed of Sound updated in:

EM3000

Speed of Sound m/sec vs depth GRAPH



Next Calibration to be performed:

Operator Signature	G.A.S. Party Chief Signature	Client Signature (if necessary)

GEOLOGICAL ASSISTANCE & SERVICES

Rev. Date	File:	Page
27.03.2006	M021_AM400A_SoSCalibration.doc	1 of 6



G.A.S. s.r.l.

CALIBRATION FORM: SPEED OF SOUND (M021) - REV.01

N. :
PAGE 1 OF 1

IDP: AM400

PROJECT: Brenda Annamaria A-B SS e WS

GEOGRAPHIC LOCATION: NORTH ADRIATIC SEA

AREA: Annamaria B

CLIENT : ENI E&P

DATE: 10/03/06

VESSEL: ODIN FINDER

Reference Quality Procedure : QP012

OPERATOR: Tarenghi

Latitude

Longitude

EASTING

NORTHING

44°17.2432'N

13°23.9430'E

372266.08

4905039.37

Probe type: SEABIRD SBE 19-02

Serial Number: 1921168-2813

attached monograph

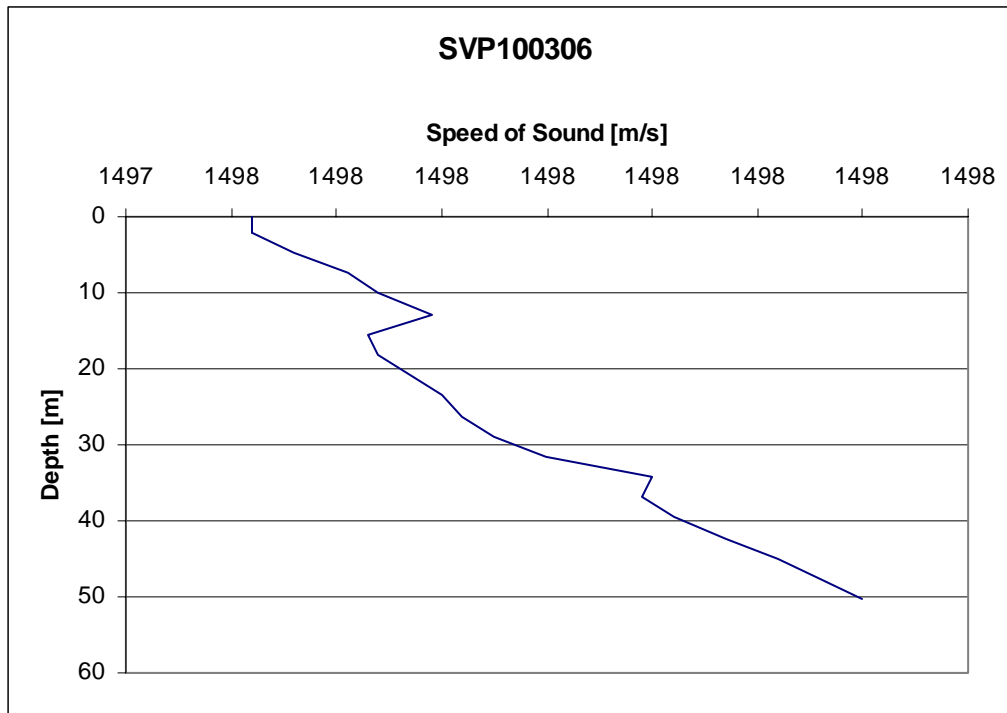
Data File (complete path):

attached file print

Speed of Sound updated in:

EM3000

Speed of Sound m/sec vs depth GRAPH



Next Calibration to be performed:

Operator Signature	G.A.S. Party Chief Signature	Client Signature (if necessary)

GEOLOGICAL ASSISTANCE & SERVICES

Rev. Date	File:	Page
27.03.2006	M021_AM400A_SoSCalibration.doc	2 of 6



G.A.S. s.r.l.

CALIBRATION FORM: SPEED OF SOUND (M021) - REV.01

N. :
PAGE 1 OF 1

IDP: AM400

PROJECT: Brenda Annamaria A-B SS e WS

GEOGRAPHIC LOCATION: NORTH ADRIATIC SEA

AREA: SS Brenda-Annamaria B

CLIENT : ENI E&P

DATE: 15/03/06

VESSEL: ODIN FINDER

Reference Quality Procedure : QP012

OPERATOR: Tarenghi

Latitude

Longitude

EASTING

NORTHING

44°06.8829'N

13°03.8508'E

345095.76

4886436.02

Probe type: SEABIRD SBE 19-02

Serial Number: 1921168-2813

attached monograph

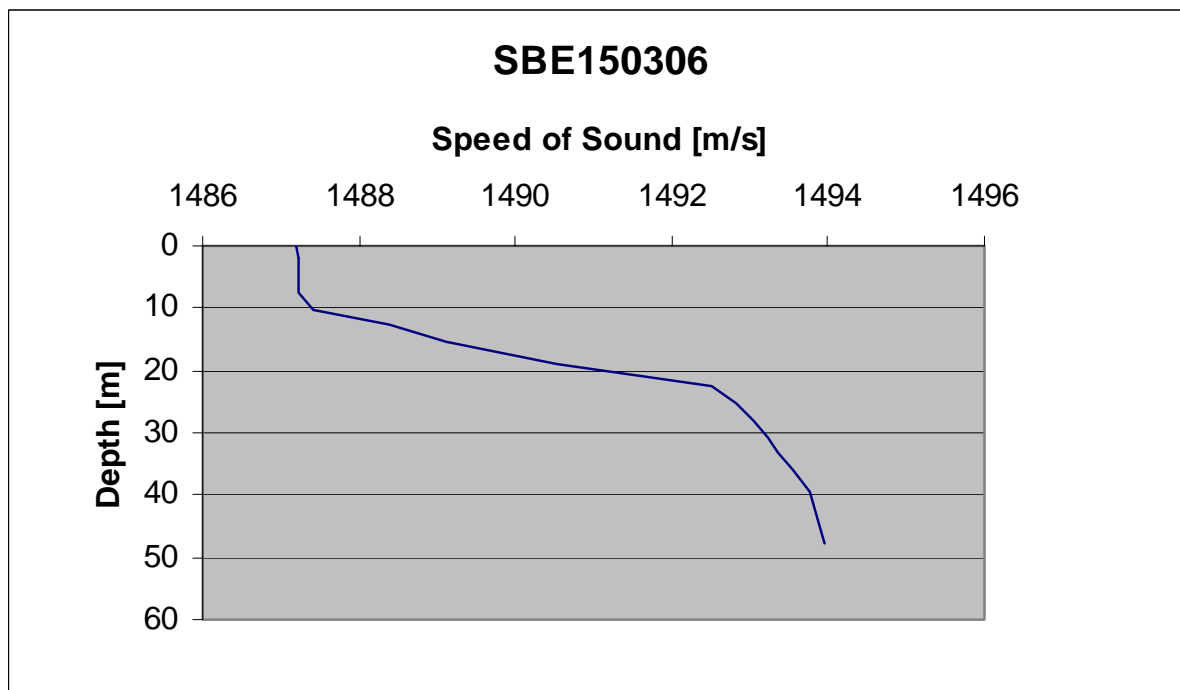
Data File (complete path):

attached file print

Speed of Sound updated in:

EM3000

Speed of Sound m/sec vs depth GRAPH



Next Calibration to be performed:

Operator Signature	G.A.S. Party Chief Signature	Client Signature (if necessary)

GEOLOGICAL ASSISTANCE & SERVICES

Rev. Date	File:	Page
27.03.2006	M021_AM400A_SoSCalibration.doc	3 of 6



G.A.S. s.r.l.

CALIBRATION FORM: SPEED OF SOUND (M021) - REV.01

N. :
PAGE 1 OF 1

IDP: AM400

PROJECT: Brenda Annamaria A-B SS e WS

GEOGRAPHIC LOCATION: NORTH ADRIATIC SEA

AREA: WSS Annamaria A

CLIENT : ENI E&P

DATE: 15/03/06

VESSEL: ODIN FINDER

Reference Quality Procedure : QP012

OPERATOR: Tarenghi

Latitude

Longitude

EASTING

NORTHING

44°22.0938'N

13°22.2770'E

370228.98

49144062.65

Probe type: SEABIRD SBE 19-02

Serial Number: 1921168-2813

attached monograph

Data File (complete path):

attached file print

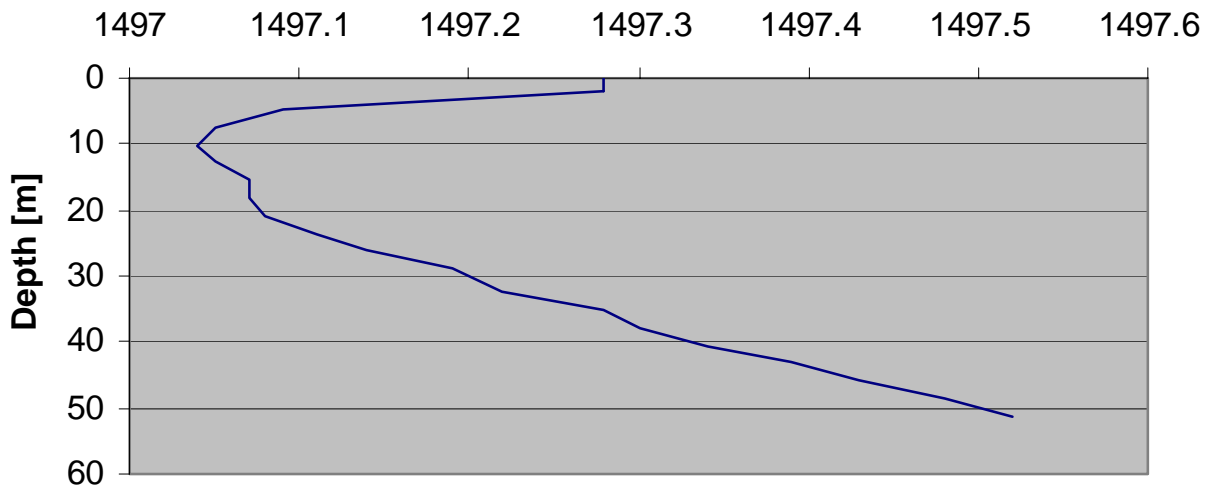
Speed of Sound updated in:

EM3000

Speed of Sound m/sec vs depth GRAPH

SBE150306B

Speed of Sound [m/s]



Next Calibration to be performed:

Operator Signature	G.A.S. Party Chief Signature	Client Signature (if necessary)

GEOLOGICAL ASSISTANCE & SERVICES

Rev. Date	File:	Page
27.03.2006	M021_AM400A_SoSCalibration.doc	4 of 6



G.A.S. s.r.l.

CALIBRATION FORM: SPEED OF SOUND (M021) - REV.01

N. :
PAGE 1 OF 1

IDP: AM400

PROJECT: Brenda Annamaria A-B SS e WS

GEOGRAPHIC LOCATION: NORTH ADRIATIC SEA

AREA: Brenda Annamaria A-B

CLIENT : ENI E&P

DATE: 17/03/06

VESSEL: ODIN FINDER

Reference Quality Procedure : QP012

OPERATOR: Tarenghi

Latitude

Longitude

EASTING

NORTHING

44°22.20'N

13°22.19'E

370128.06

4914276.01

Probe type: SEABIRD SBE 19-02

Serial Number: 1921168-2813

attached monograph

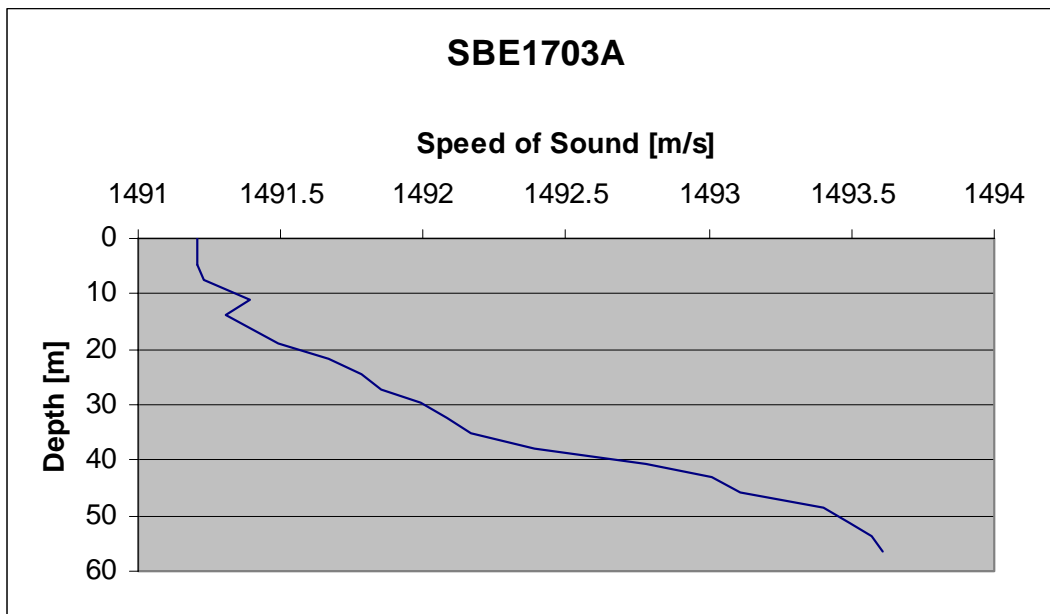
Data File (complete path):

attached file print

Speed of Sound updated in:

EM3000

Speed of Sound m/sec vs depth GRAPH




Next Calibration to be performed:

Operator Signature	G.A.S. Party Chief Signature	Client Signature (if necessary)

GEOLOGICAL ASSISTANCE & SERVICES

Rev. Date	File:	Page
27.03.2006	M021_AM400A_SoSCalibration.doc	5 of 6

THIS PAGE INTENTIONALLY BLANK

Operator Signature	G.A.S. Party Chief Signature	Client Signature (if necessary)
		
Rev. Date	File:	Page
27.03.2006	M021_AM400A_SoSCalibration.doc	6 of 6



G.A.S. S.r.l.

MULTIBEAM CALIBRATION FORM (M026) - REV.00

N. :

PAGE 1 OF 6

IDP: AM400

PROJECT: Brenda Annamaria A-B SS e WS

GEOGRAPHIC LOCATION: NORTH ADRIATIC SEA

AREA: BENEDETTA

CLIENT: ENI E&P

DATE: 22/02/06

VESSEL: ODIN FINDER

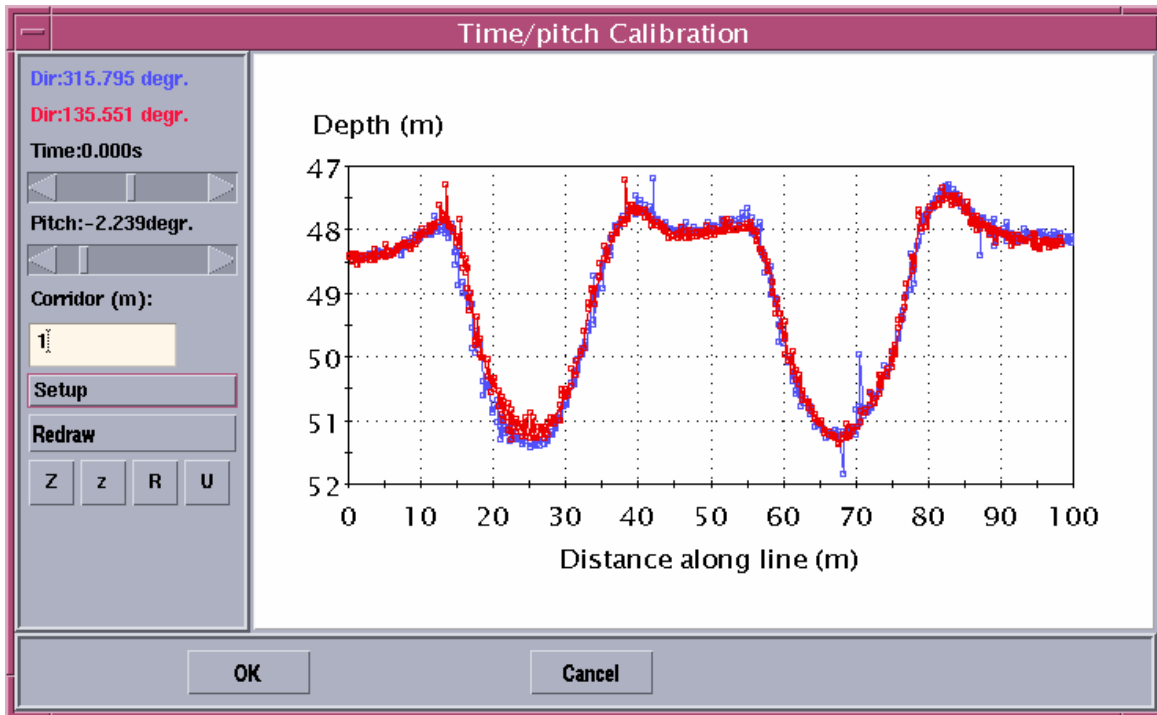
MULTIBEAM TYPE: SIMRAD EM3000

OPERATOR: ULIVIERI

PROBE FILE NAME: SVP220206

Pitch/Time Calibration

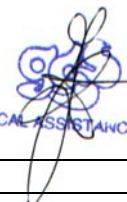
Line name	SOL			EOL		
	Latitude	Longitude	Depth (m)	Latitude	Longitude	Depth (m)
CAL2	44°06'42.80"	13°03'07.19"	48.2	44°07'12.79"	13°02'26.73"	48.1
CAL2_1	44°07'12.40"	13°02'26.67"	48.1	44°06'42.88"	13°03'06.74"	48.1



Additional Pitch Offset: -2.239° (-2.239+1.75= **-0.49°**)

Additional Time Delay : #s

Next Calibration to be performed:


 GEOLOGICAL ASSISTANCE & SERVICES®

Rev. Date	File:	Page
20/08/01	M026_AM400A_MB Calibration.doc	1 of 3



G.A.S. S.r.l.

MULTIBEAM CALIBRATION FORM (M026) - REV.00

N. :

PAGE 2 OF 6

IDP: AM400

PROJECT: Brenda Annamaria A-B SS e WS

GEOGRAPHIC LOCATION: NORTH ADRIATIC SEA

AREA: Brenda Annamaria A-B

CLIENT: ENI E&P

DATE: 22/02/06

VESSEL: ODIN FINDER

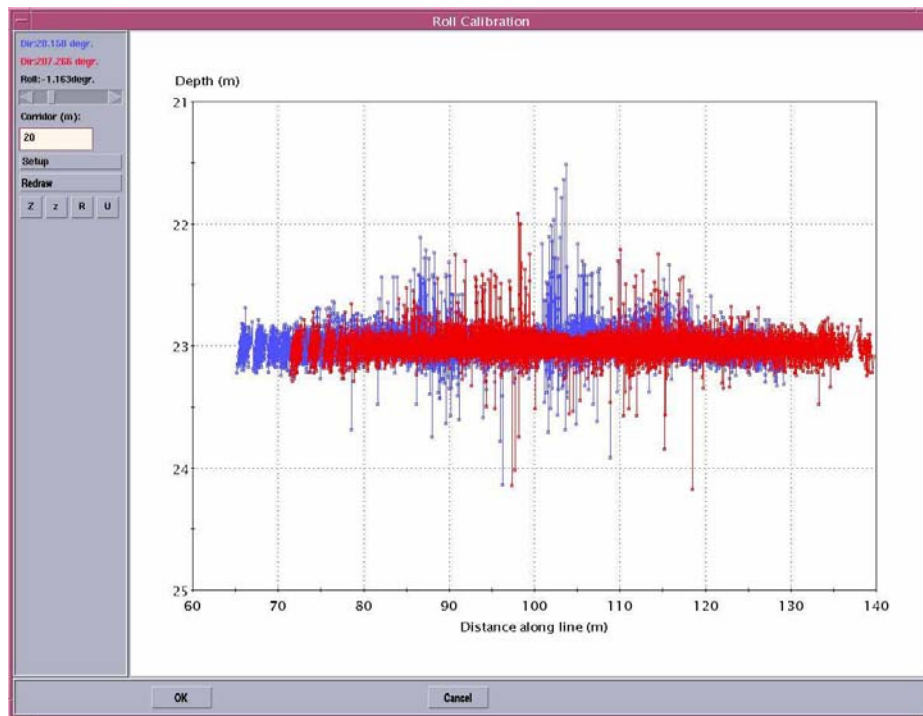
MULTIBEAM TYPE: Simrad EM3000

OPERATOR: ULIVIERI

PROBE FILE NAME: SVP220206

Roll Calibration

Line name	SOL			EOL		
	Latitude	Longitude	Depth (m)	Latitude	Longitude	Depth (m)
CAL2	44°06'42.80"	13°03'07.19"	48.2	44°07'12.79"	13°02'26.73"	48.1
CAL2_1	44°07'12.40"	13°02'26.67"	48.1	44°06'42.88"	13°03'06.74"	48.1



Additional Roll Offset: -1.163°

Next Calibration to be performed:

GEOLOGICAL ASSISTANCE & SERVICES®

Rev. Date	File:	Page
20/08/01	M026_AM400A_MB Calibration.doc	2 of 3



G.A.S. S.r.l.

MULTIBEAM CALIBRATION FORM (M026) - REV.00

N. :
PAGE 3 OF 6

IDP: AM400

PROJECT: Brenda Annamaria A-B SS e WS

GEOGRAPHIC LOCATION: NORTH ADRIATIC SEA

AREA: Brenda Annamaria A-B

CLIENT: ENI E&P

DATE: 22/02/06

VESSEL: ODIN FINDER

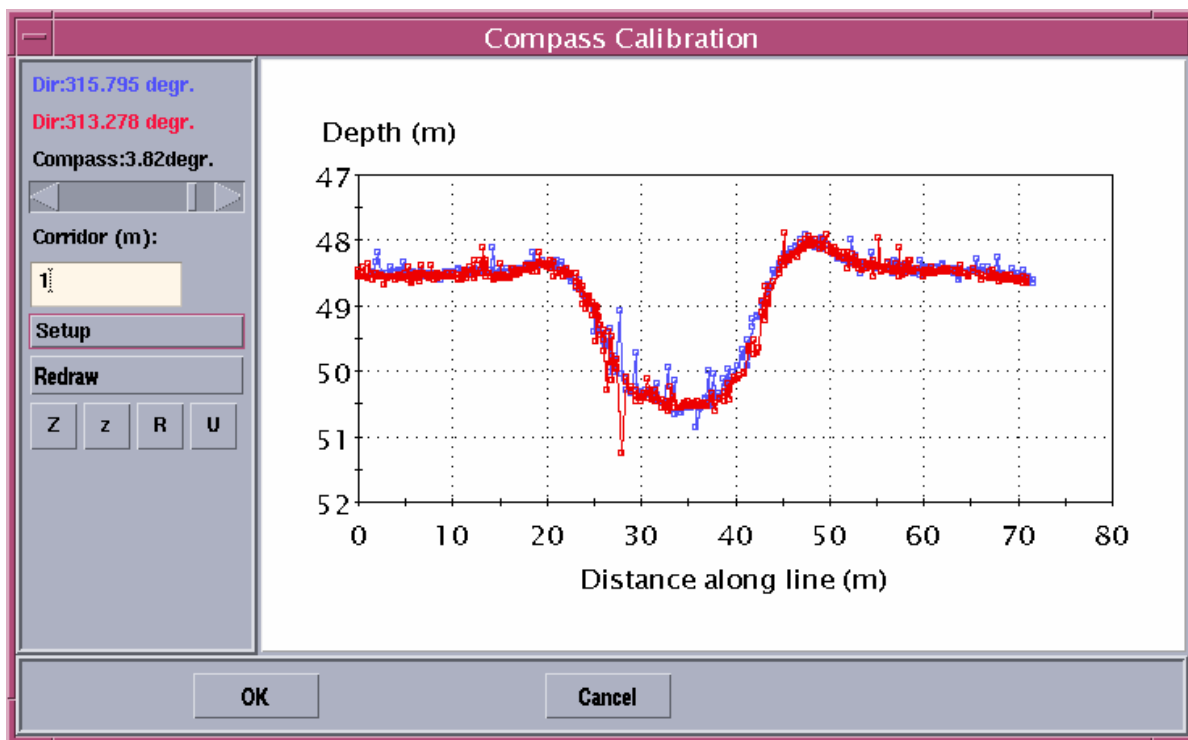
MULTIBEAM TYPE: Simrad EM3000

OPERATOR: ULIVIERI

PROBE FILE NAME: SVP220206


Compass Calibration

Line name	SOL			EOL		
	Latitude	Longitude	Depth (m)	Latitude	Longitude	Depth (m)
CAL2	44°06'42.80"	13°03'07.19"	48.2	44°07'12.79"	13°02'26.73"	48.1
CAL1	44°06'43.84"	13°03'10.62"	48.5	44°07'08.68"	13°02'34.14"	48.3



Additional Compass Offset: 3.82°

Next Calibration to be performed:


GEOLOGICAL ASSISTANCE & SERVICE®

Rev. Date	File:	Page
20/08/01	M026_AM400A_MB Calibration.doc	3 of 3



G.A.S. S.r.l.

MULTIBEAM CALIBRATION FORM (M026) - REV.00

N. :
PAGE 4 OF 6

IDP: AM400

PROJECT: Brenda Annamaria A-B SS e WS

GEOGRAPHIC LOCATION: NORTH ADRIATIC SEA

AREA: Brenda Annamaria A-B

CLIENT: ENI E&P

DATE: 08/03/06

VESSEL: ODIN FINDER

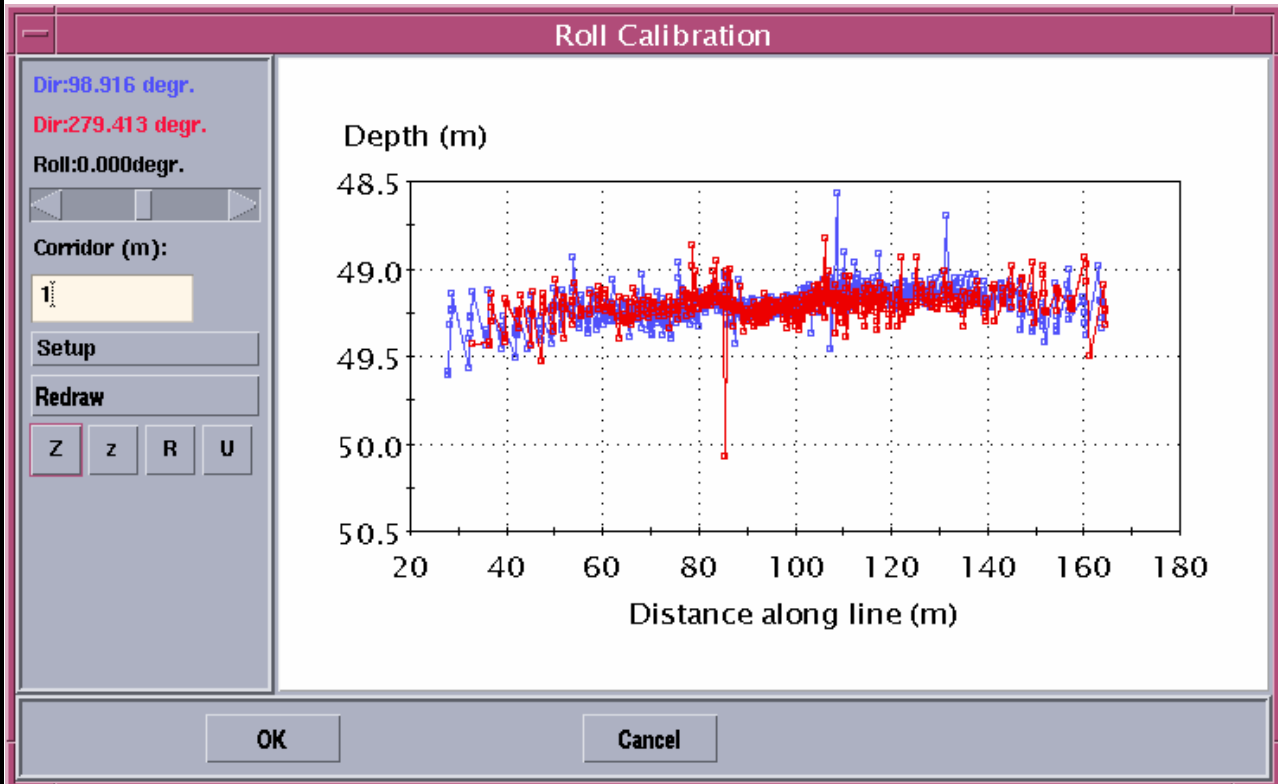
MULTIBEAM TYPE: Simrad EM3000

OPERATOR: A. PASSALACQUA

PROBE FILE NAME: SBE0803a


Roll Calibration

Line name	SOL			EOL		
	Latitude	Longitude	Depth (m)	Latitude	Longitude	Depth (m)
CAL0803	44°07'12.85"	13°02'27.78"	48.2	44°06'46.67"	13°03'01.84"	48.1
CAL0803B	44°06'41.01"	13°03'09.51"	48.5	44°07'13.34"	13°02'26.68"	48.3



Additional Roll Offset: 0.0°

Next Calibration to be performed:


GEOLOGICAL ASSISTANCE & SERVICES®

Rev. Date	File:	Page
20/08/01	M026_AM400A_MB Calibration.doc	4 of 3



G.A.S. S.r.l.

MULTIBEAM CALIBRATION FORM (M026) - REV.00

N. :
PAGE 5 OF 6

IDP: AM400

PROJECT: Brenda Annamaria A-B SS e WS

GEOGRAPHIC LOCATION: NORTH ADRIATIC SEA

AREA: Brenda Annamaria A-B

CLIENT: ENI E&P

DATE: 08/03/06

VESSEL: ODIN FINDER

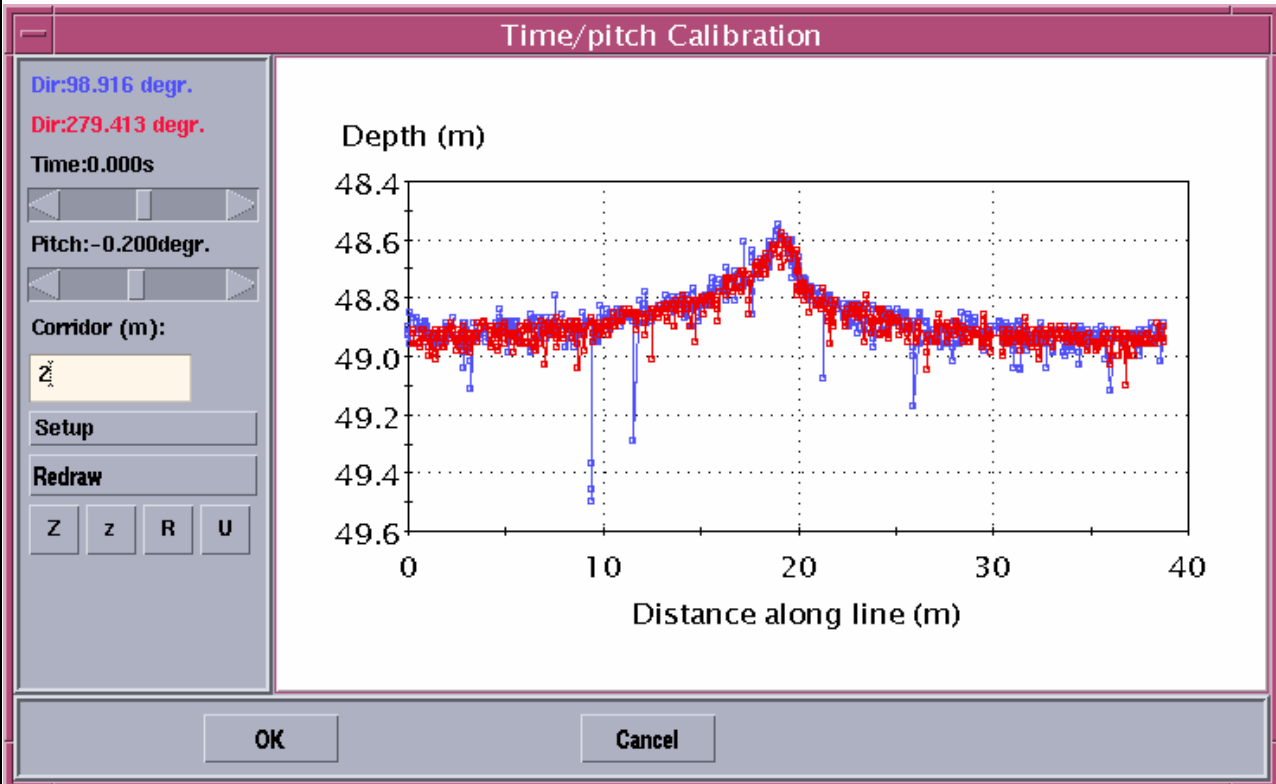
MULTIBEAM TYPE: Simrad EM3000

OPERATOR: A. PASSALACQUA

PROBE FILE NAME: SBE0803a


Pitch Calibration

Line name	SOL			EOL		
	Latitude	Longitude	Depth (m)	Latitude	Longitude	Depth (m)
CAL0803D	44°07'28.06"	13°02'39.93"	48.2	44°07'25.84"	13°02'59.84"	48.1
CAL0803E	44°07'25.77"	13°03'00.66"	48.5	44°07'28.20"	13°02'40.42"	48.3



Additional Pitch Offset: -0.2°

Next Calibration to be performed:


GEOLOGICAL ASSISTANCE & SERVICES®

Rev. Date	File:	Page
20/08/01	M026_AM400A_MB Calibration.doc	5 of 3



G.A.S. S.r.l.

MULTIBEAM CALIBRATION FORM (M026) - REV.00

N. :
PAGE 6 OF 6

IDP: AM400

PROJECT: Brenda Annamaria A-B SS e WS

GEOGRAPHIC LOCATION: NORTH ADRIATIC SEA

AREA: Brenda Annamaria A-B

CLIENT: ENI E&P

DATE: 15/03/06

VESSEL: ODIN FINDER

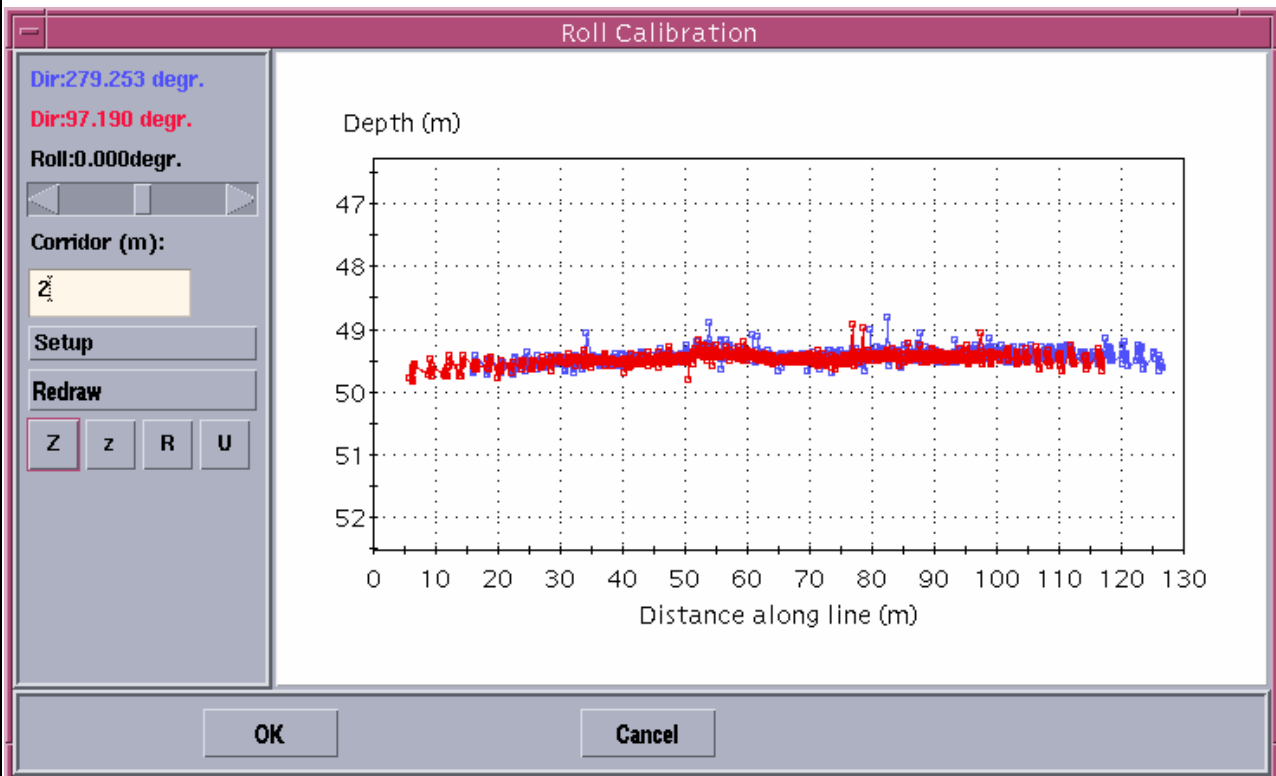
MULTIBEAM TYPE: Simrad EM3000

OPERATOR: A. PASSALACQUA

PROBE FILE NAME: SBE150306

Roll Calibration

Line name	SOL			EOL		
	Latitude	Longitude	Depth (m)	Latitude	Longitude	Depth (m)
ROLL1503	44°07'12.85"	13°02'27.78"	48.2	44°06'46.67"	13°03'01.84"	48.1
ROLB1503	44°06'41.01"	13°03'09.51"	48.5	44°07'13.34"	13°02'26.68"	48.3



Additional Roll Offset: -0.0°

Next Calibration to be performed:

GEOLOGICAL ASSISTANCE & SERVICES®

Rev. Date	File:	Page
20/08/01	M026_AM400A_MB Calibration.doc	6 of 3



G.A.S. s.r.l.

DGPS CONTROL FORM (M036)

REV. 00

N. :

PAGE 1 OF 1

IDP: AM399

PROJECT: WSS BENEDETTA 1

GEOGRAPHIC LOCATION: NORTH ADRIATIC SEA

AREA: Benedetta 1 site

CLIENT : ENI EXPL. & PROD.

DATE: 19/02/06

VESSEL: R/V ODIN FINDER

DGPS type 1: TRIMBLE / SKYFIX (GPS 1)
User ID/SN: GP10114 / GP1014

OPERATOR: Benedetta Ulivieri

Data file: GPS_QC-190206.xls

DGPS type 2: NAVCOM (GPS 2) User ID/SN: GP1028

Datum: Roma M. Mario; Gaus Boaga F.E.

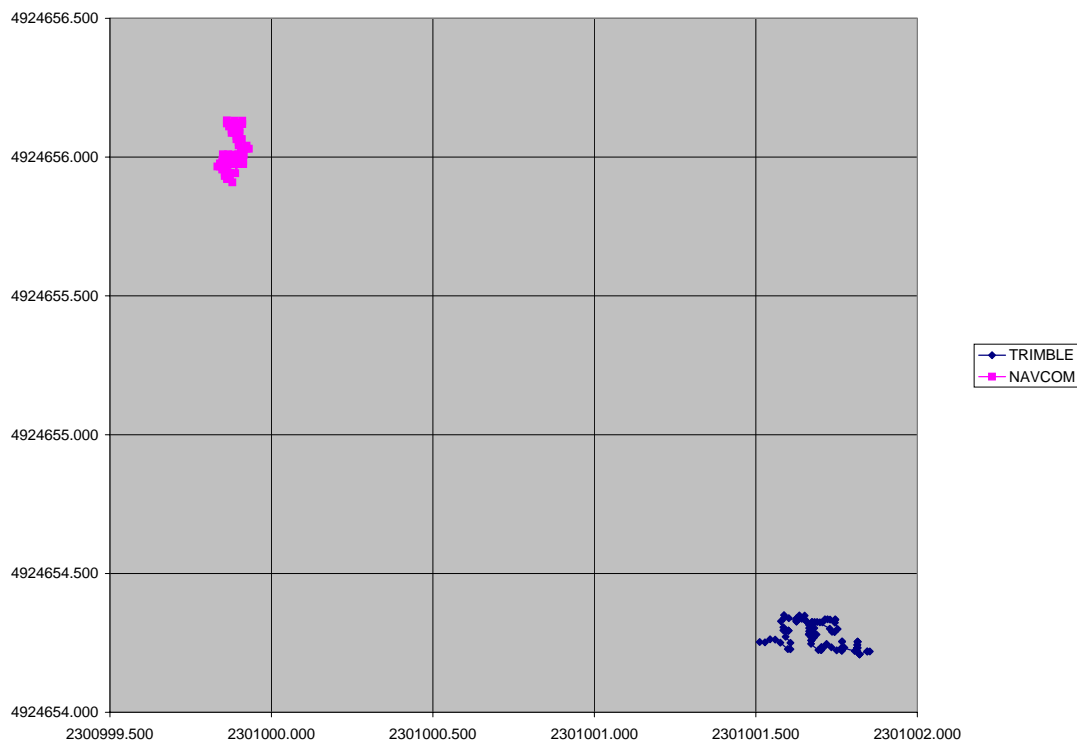
Reference Quality Procedure : QP01

Weather: Wind 5Kts, Swell 0.3m

Comparison of TRIMBLE/SKYFIX DGPS to NAVCOM DGPS both referred to Reference Point 1 (in meters)

Average Observed REFP1 from GPS1		Diff. GPS1- GPS2		Average Observed REFP1 from GPS2	
Northing	Easting	Delta N.	Delta E	Northing	Easting
4924654.279	2301001.696	1.747	1.815	4924656.027	2300999.881

Average distance between GPS1 and GPS2 = 2.520 m



Operator Signature	G.A.S. Party Chief Signature	Client Signature

Rev. Date	File:	Page
20/08/01	M036_DGPSControl form_GPS1vsGPS2.doc	1 of 1