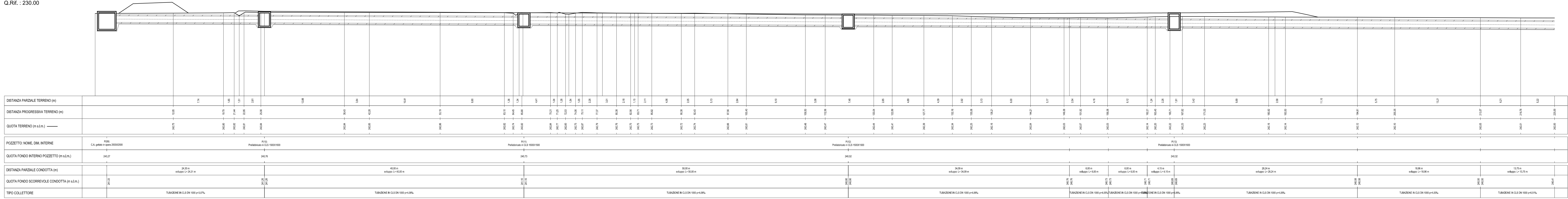


Profilo T-SP68_3 (1 di 2)

Da Progr. 0.00
A Progr. 225.00

Scala X:Y : 200:200

Q.Ref. : 230.00

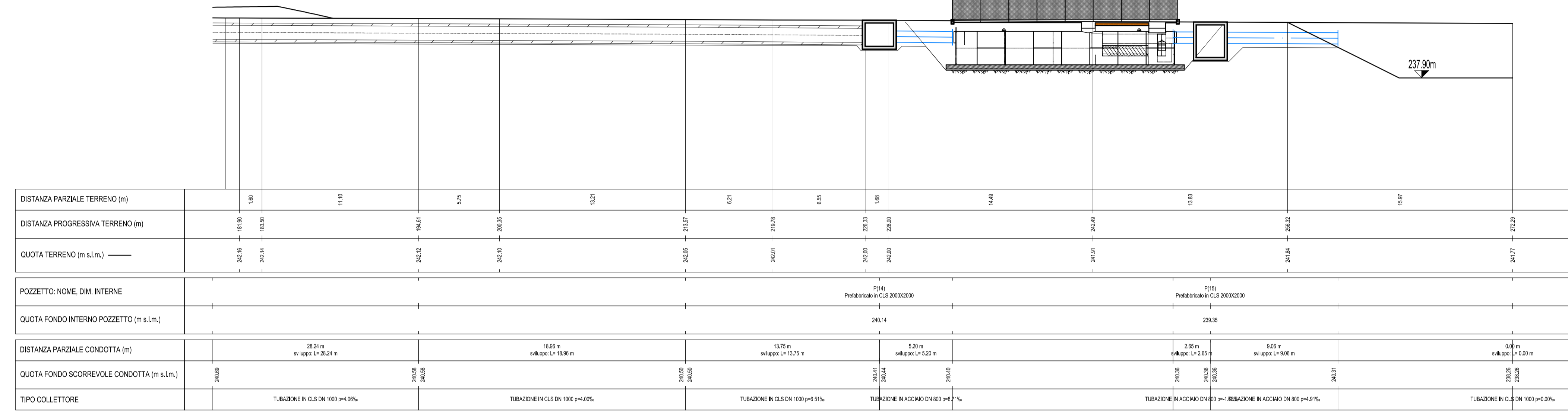


Profilo T-SP68_3 (2 di 2)

Da Progr. 180.00
A Progr. 275.00

Scala X:Y : 200:200

Q.Ref. : 230.00

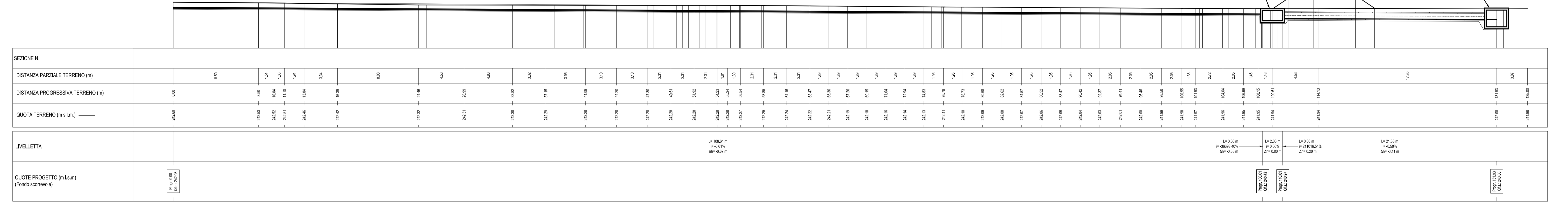


Profilo P-SP68_2BIS

Da Progr. -2.00
A Progr. 135.00

Scala X:Y : 200:200

Q.Ref. : 238.00

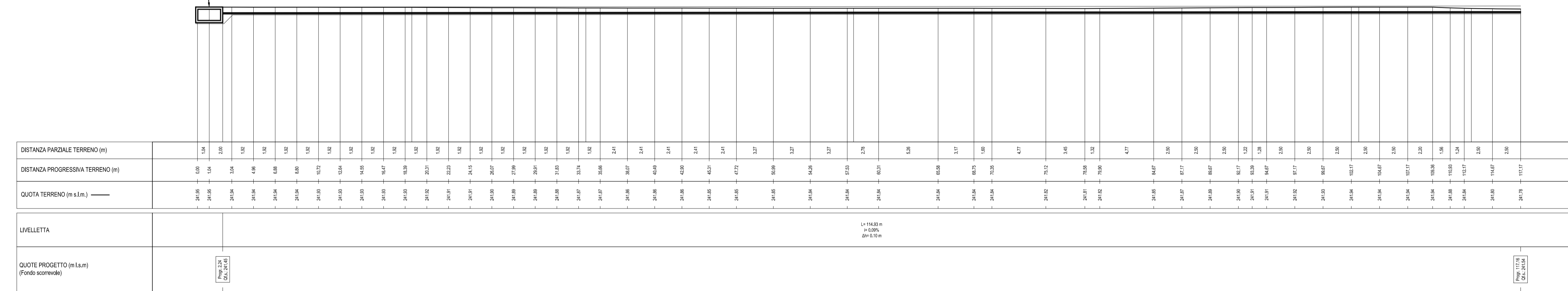


Profilo F-SP68_2

Da Progr. -2.00
A Progr. 120.00

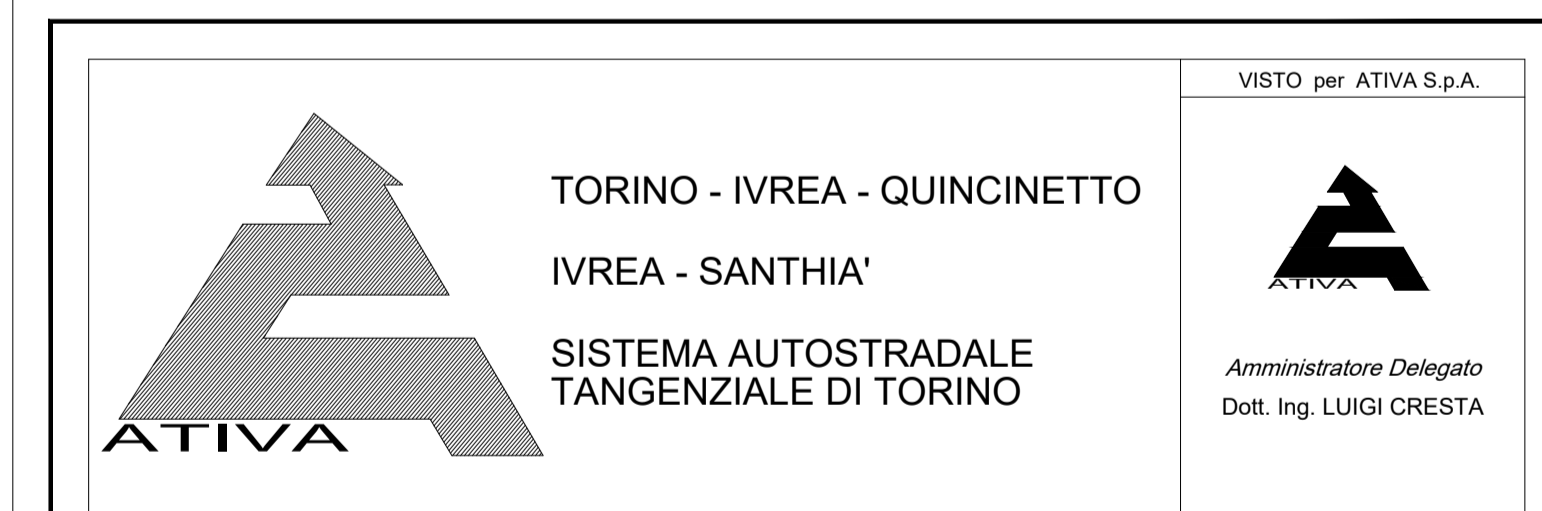
Scala X:Y : 200:200

Q.Ref. : 230.00



P(16)
Pc=241.95 m
Q=240.77 m
Dint.200x200cm

P(14)
Pc=242.00 m
Q=240.14 m
Dint.200x200cm



AUTOSTRADA A5 TORINO QUINCINETTO

NODO IDRAULICO DI IVREA
2° FASE DI COMPLETAMENTO
LOTTO 2A

PROGETTO ESECUTIVO

SISTEMA DI SMALTIMENTO DELLE ACQUE DI PIATTAFORMA
Profili longitudinali delle opere idrauliche - Tavola 2 di 5

IL PROGETTISTA	REDAZIONE	CONTROLLO	APPROVATO
HYDRODATA S.p.A. R. Sodano	HYDRODATA S.p.A. V. Tresso	ATAVA ENGINEERING V. Palmisano	
DATA	REVISIONE	DATA	
AGOSTO 2020			
SCALA	1:200		
APPEDIO	CONFERMA	N° PROGETTO	FASE
Dott. Ing. ROBERTO PIETRALI ordine degli Ingegneri di Milano n° 14638			
S S P 0 1 0 1 A 0 5 0 0 1 2 P E I D R 0 1 1 - -			