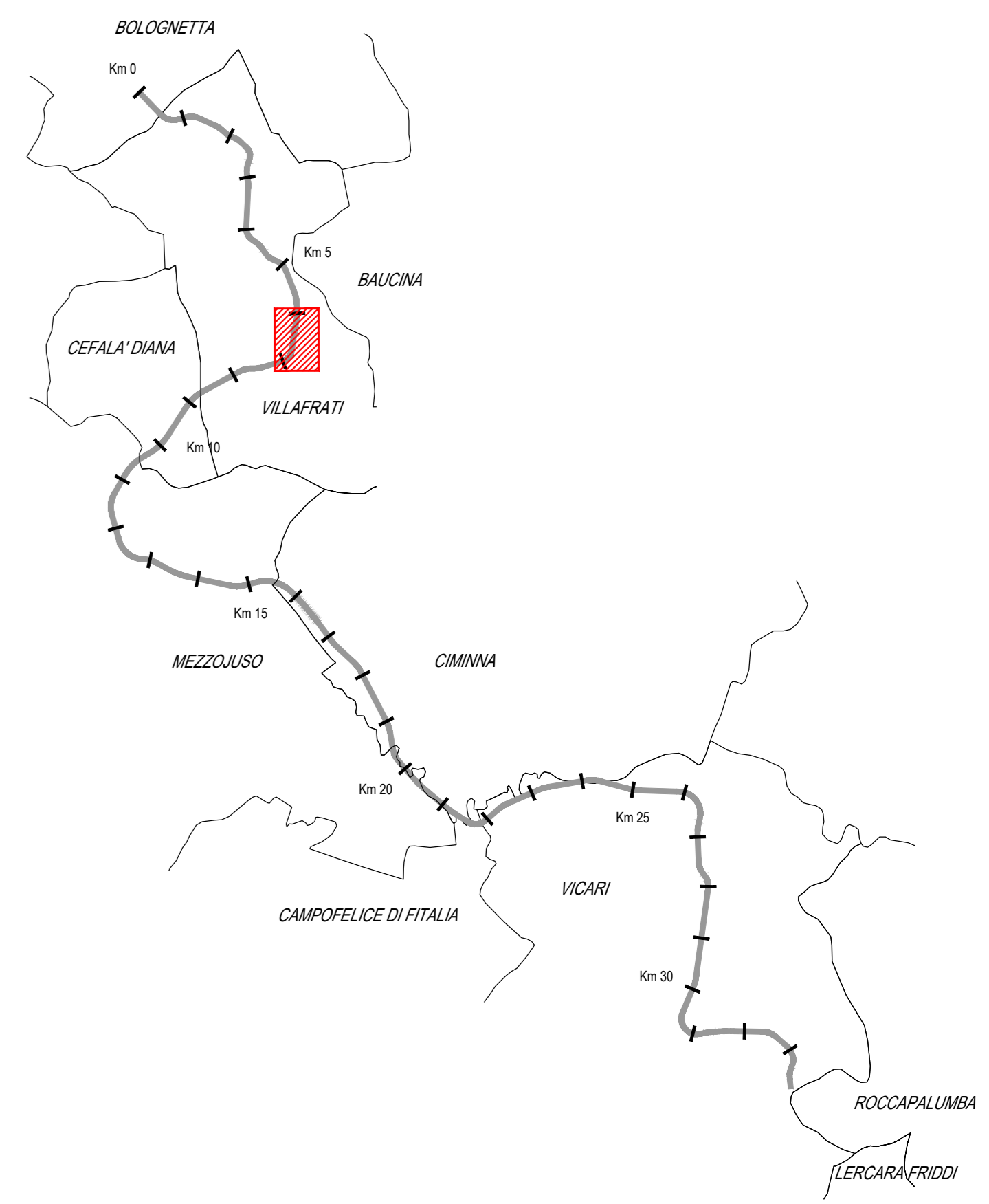
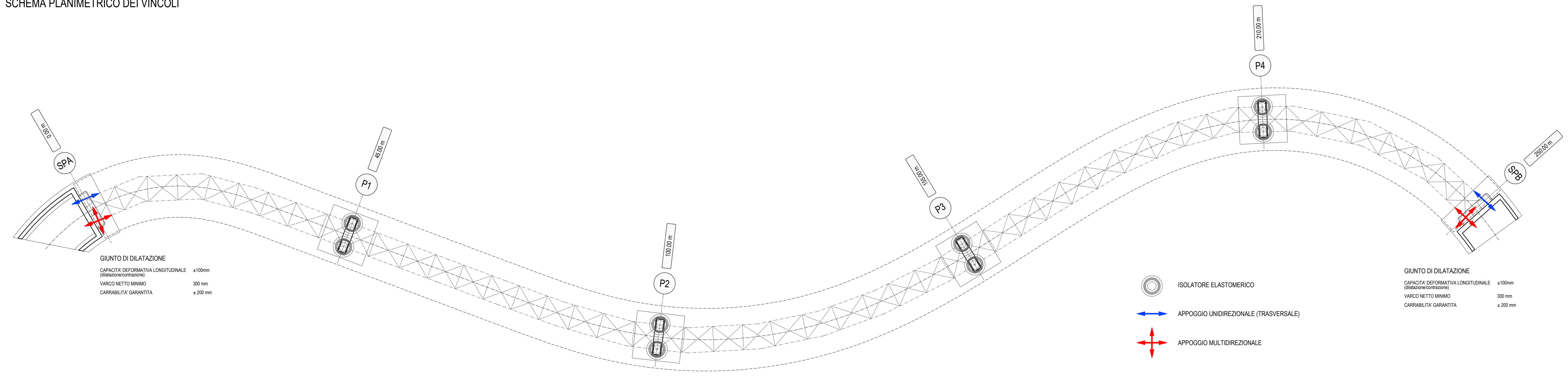


SCHEMA PLANIMETRICO DEI VINCOLI



DETTAGLIO ISOLATORE ELASTOMERICO TIPO "SI-H 650/98"

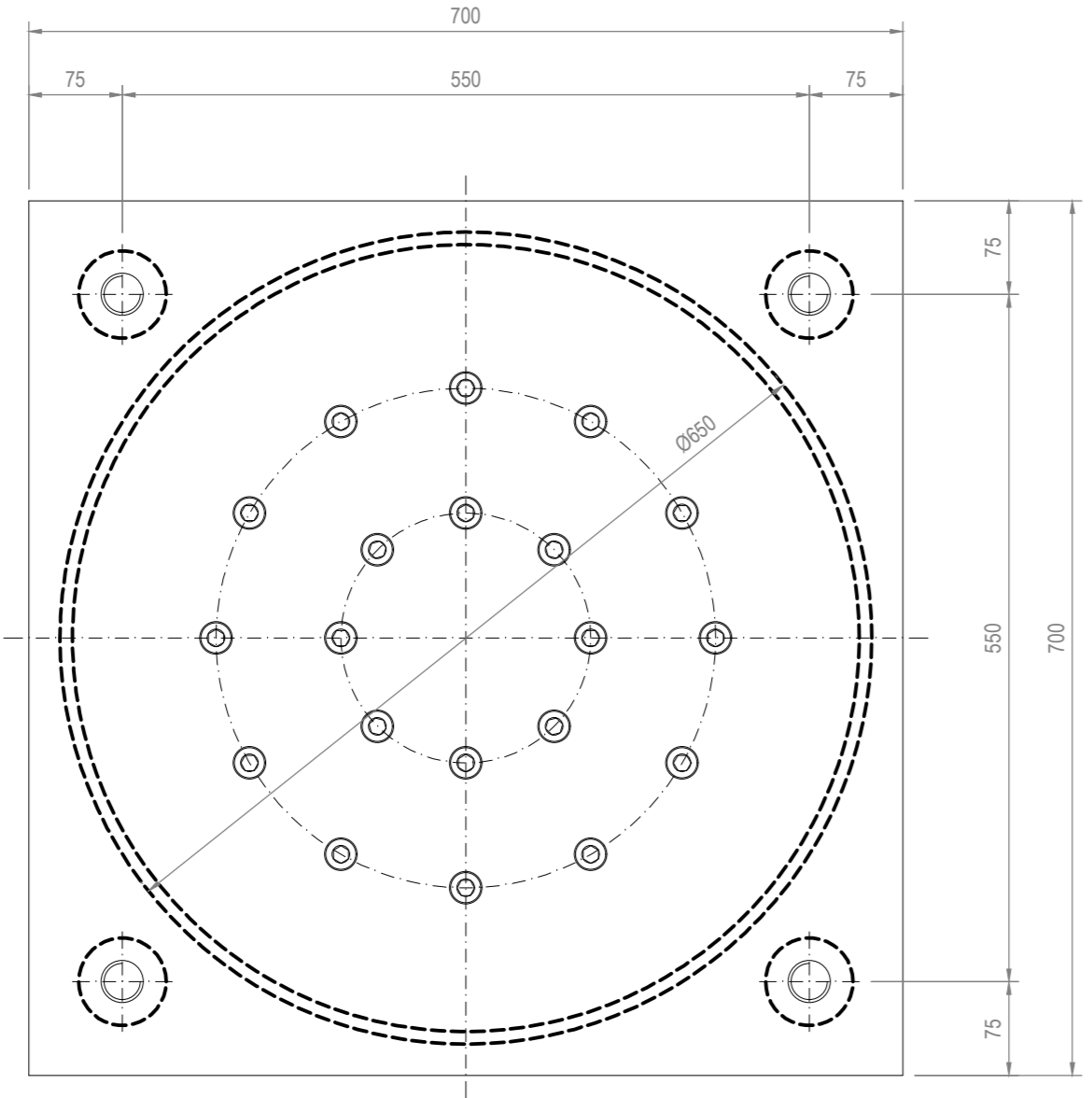
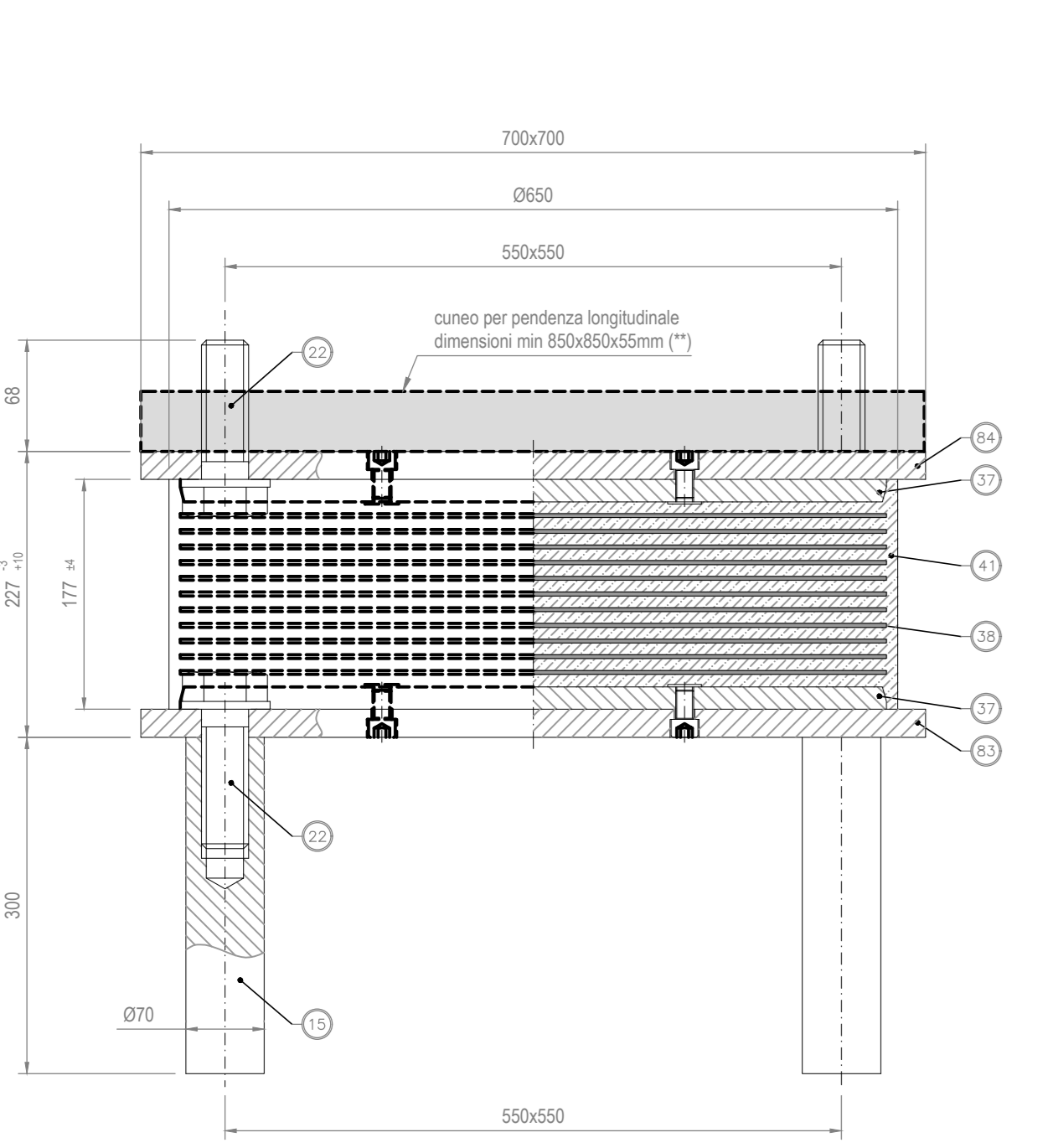


Table with 3 columns: POS. PEZZI, DESCRIZIONE - DIMENSIONI, MATERIALE. Lists components like plates, bearings, and reinforcement.

DETTAGLIO APPOGGIO UNIDIREZIONALE SPALLA "A" TIPO "VU 820/400-150"

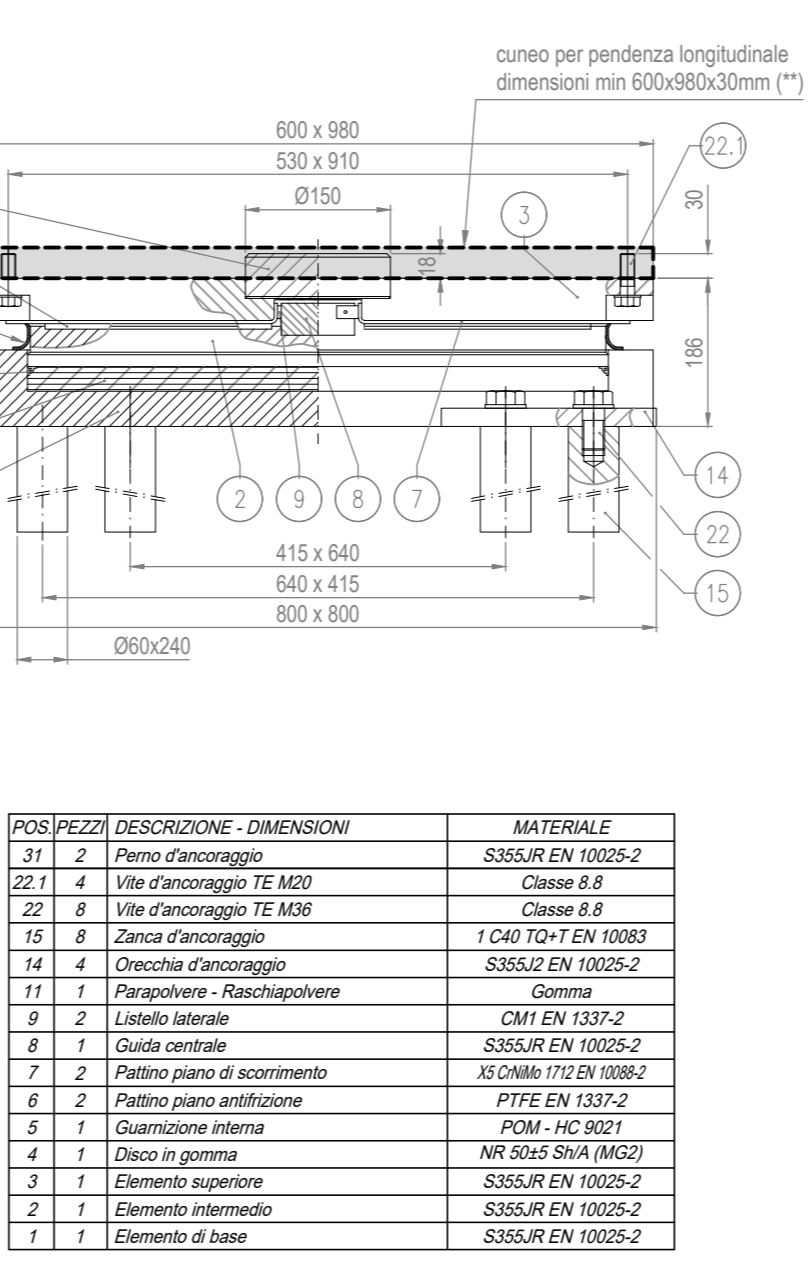
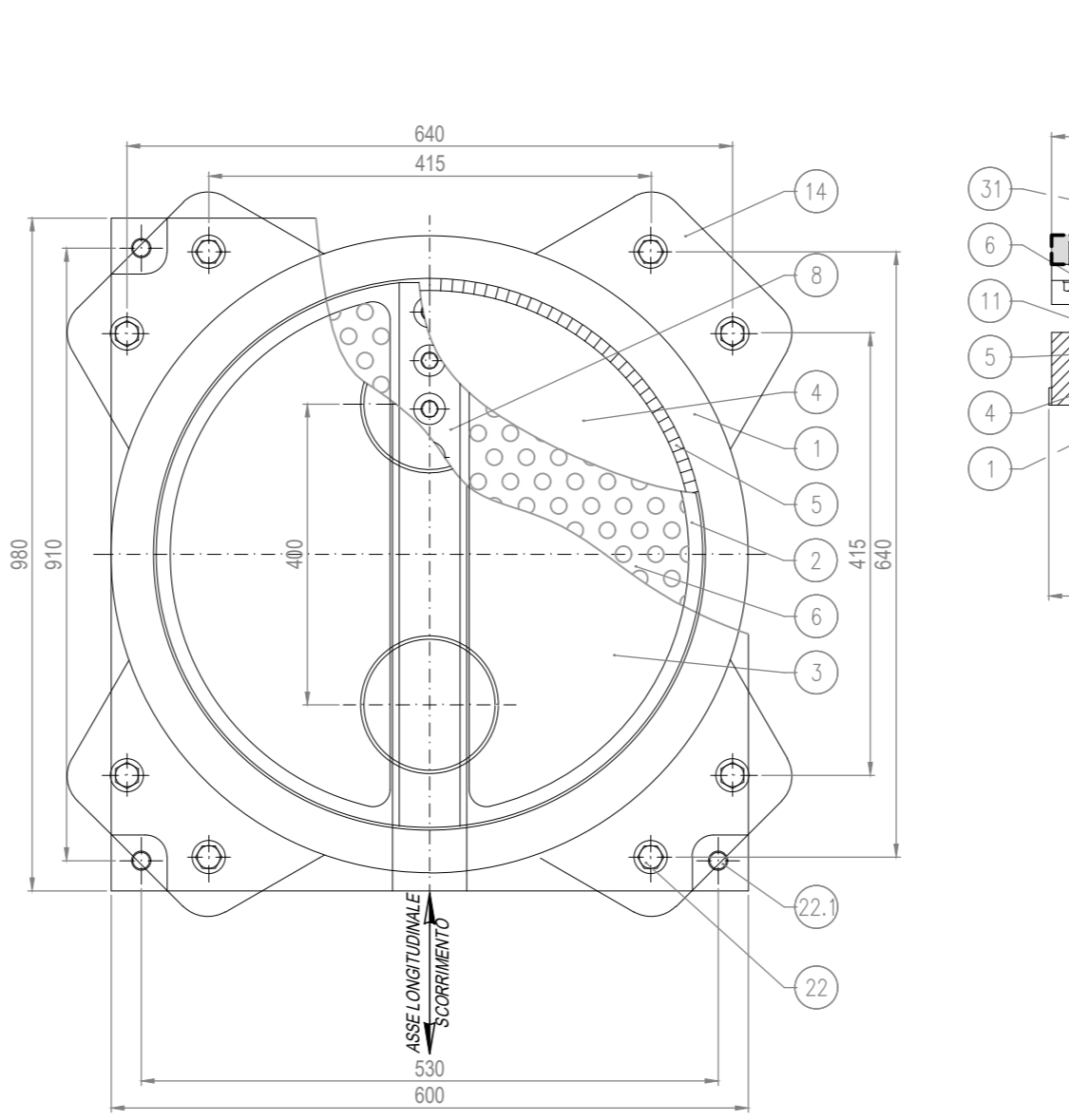


Table with 2 columns: POSPEZZI DESCRIZIONE - DIMENSIONI, MATERIALE. Lists materials for reinforcement bars and concrete.

DETTAGLIO APPOGGIO UNIDIREZIONALE SPALLA "B" TIPO "7 VU 580/400-140"

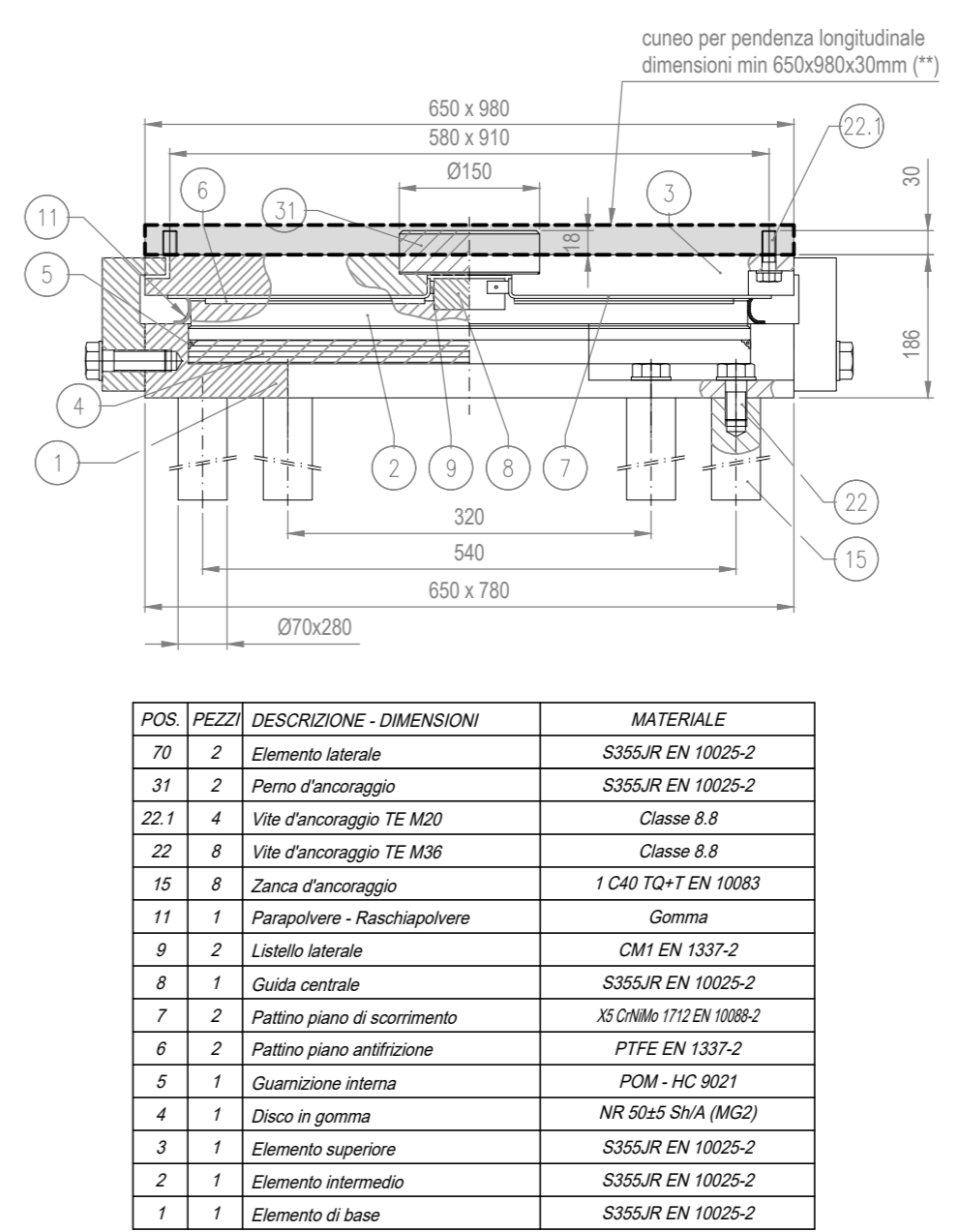
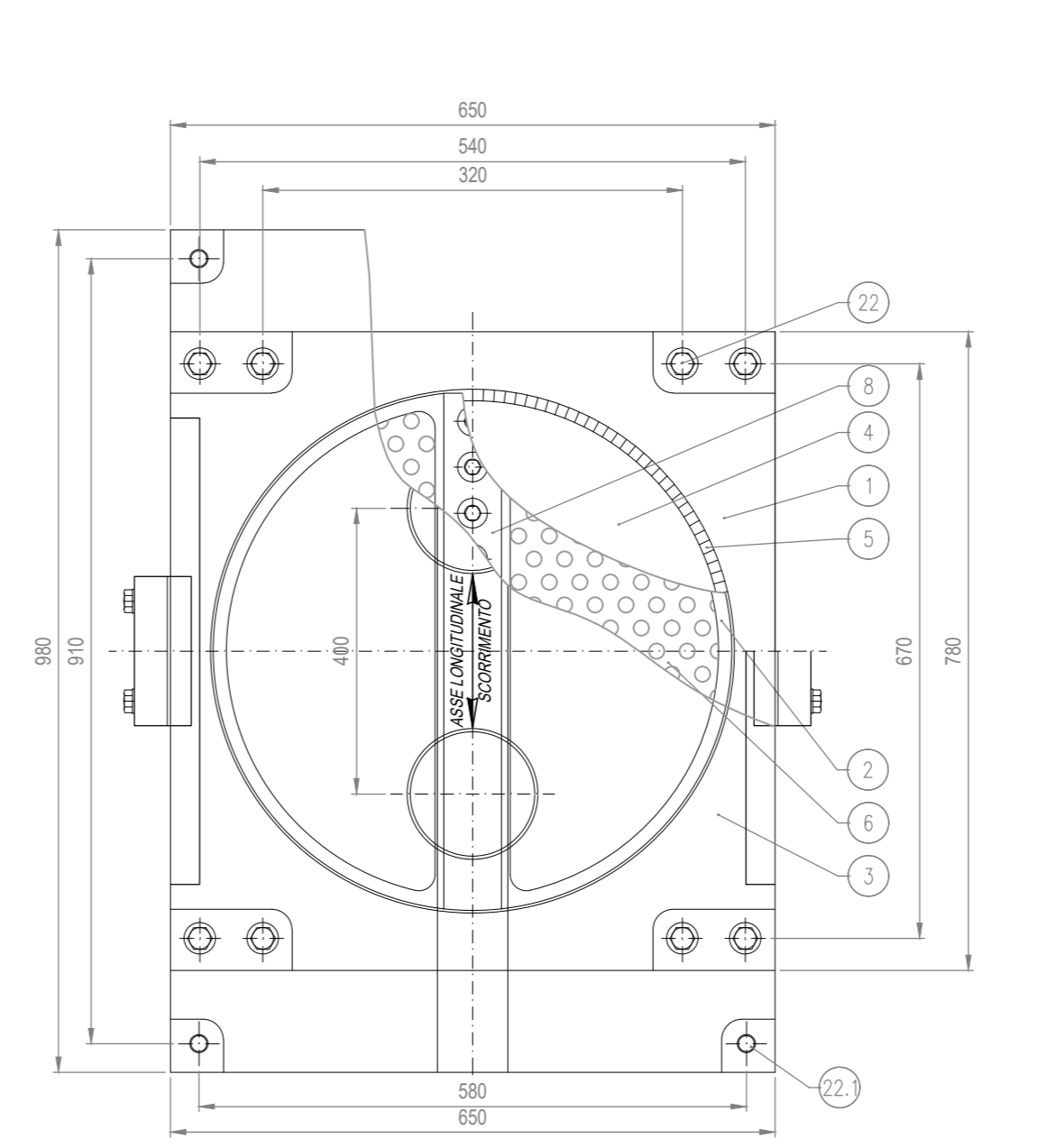


Table with 2 columns: POS. PEZZI, DESCRIZIONE - DIMENSIONI, MATERIALE. Lists materials for reinforcement bars and concrete.

Table with 10 columns: Kesi ORIZZONTALE, Kesi VERTICALE, Pci STATICA (COMPRESIONE), Pci STATICA (TRAZIONE), Pci SISMICA (COMPRESIONE), Pci SISMICA (TRAZIONE), Vesi STATICA, Vesi SISMICA, delta TOT STATICA, delta TOT SISMICA. Provides load capacity values for central and edge supports.

DETTAGLIO APPOGGIO MULTIDIREZIONALE - SPALLA "A" E "B" TIPO "280 VM 340/400/10"

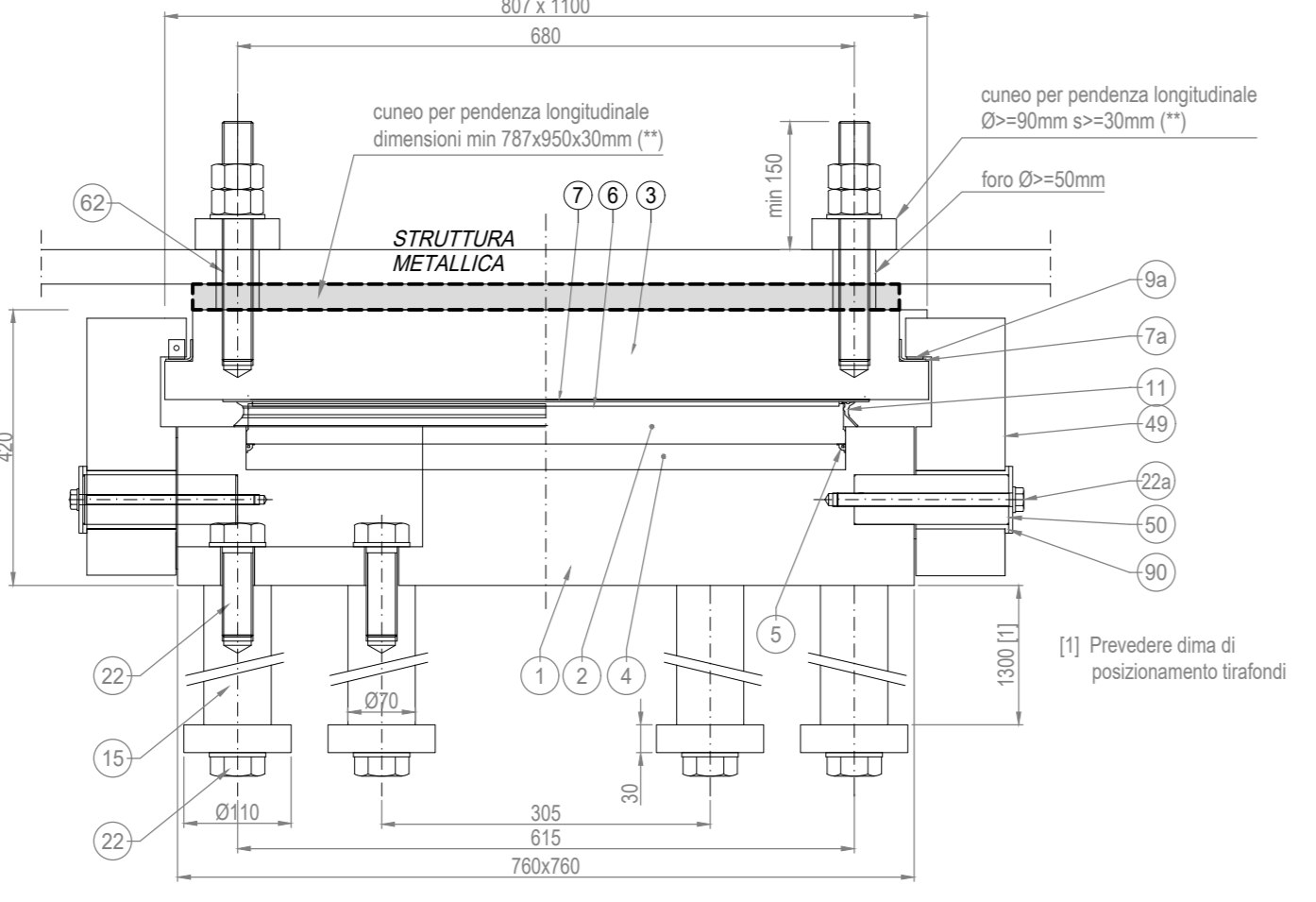
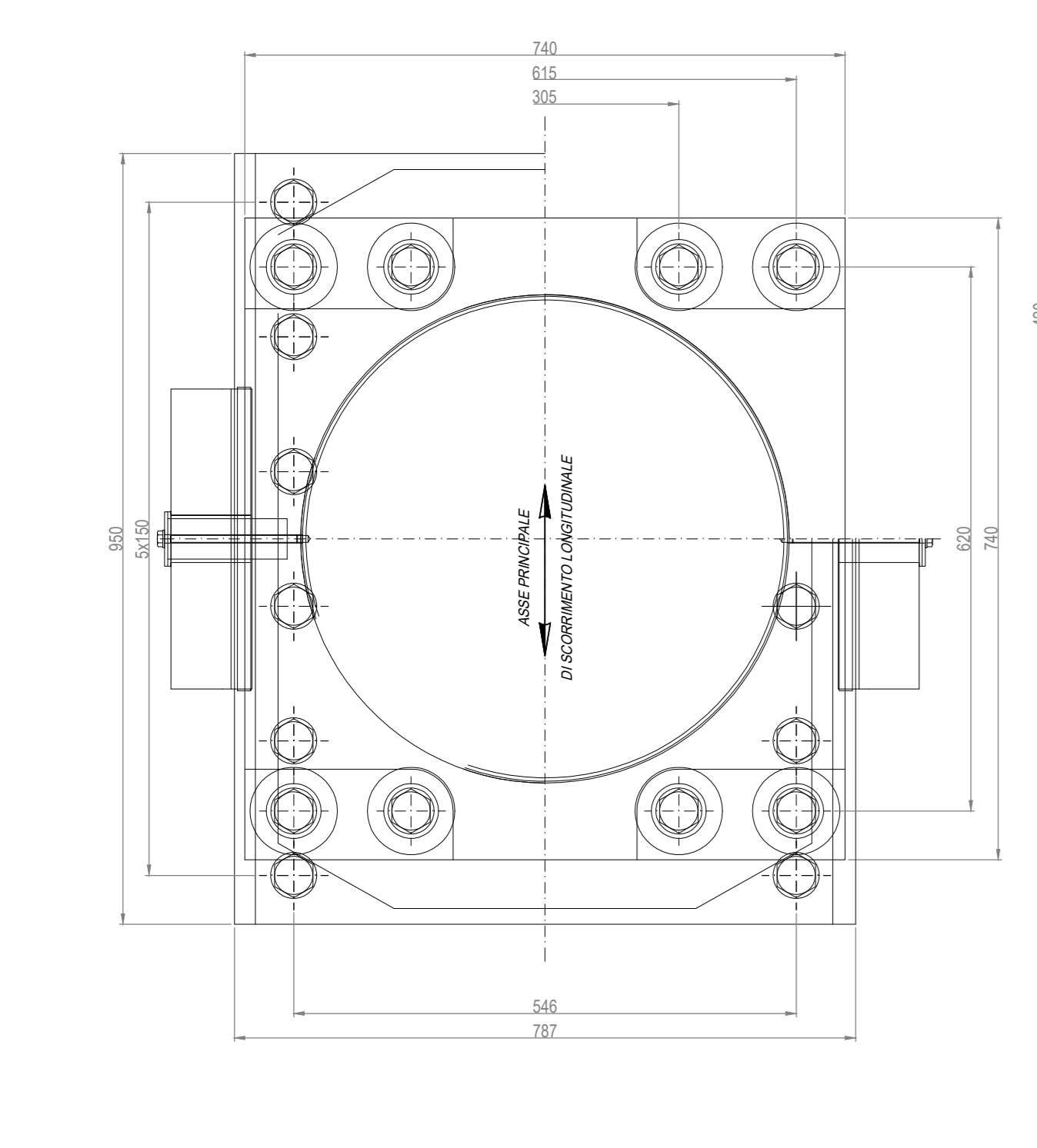
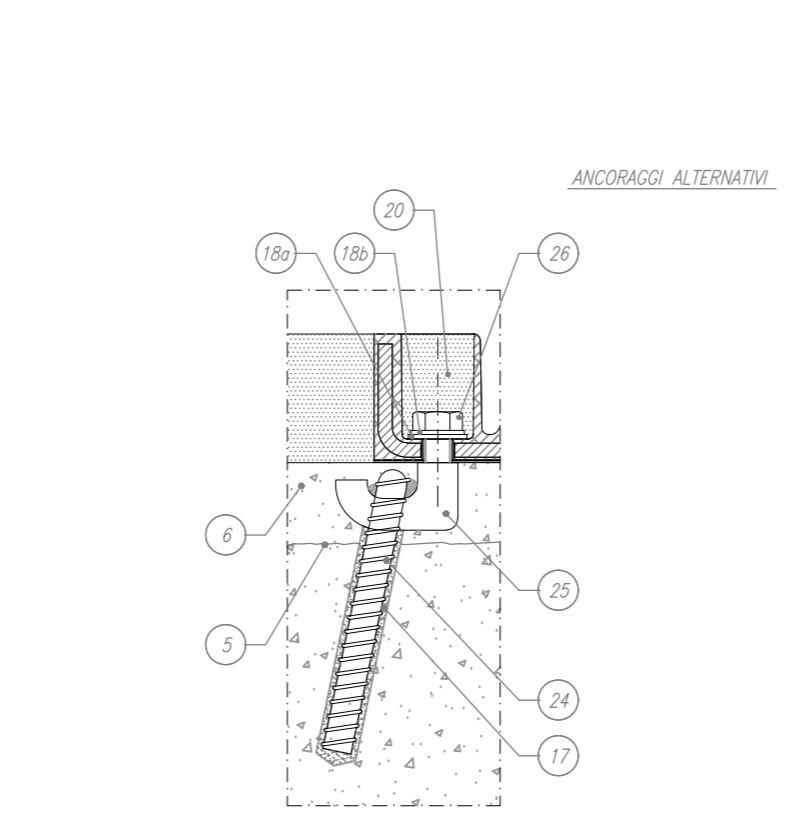
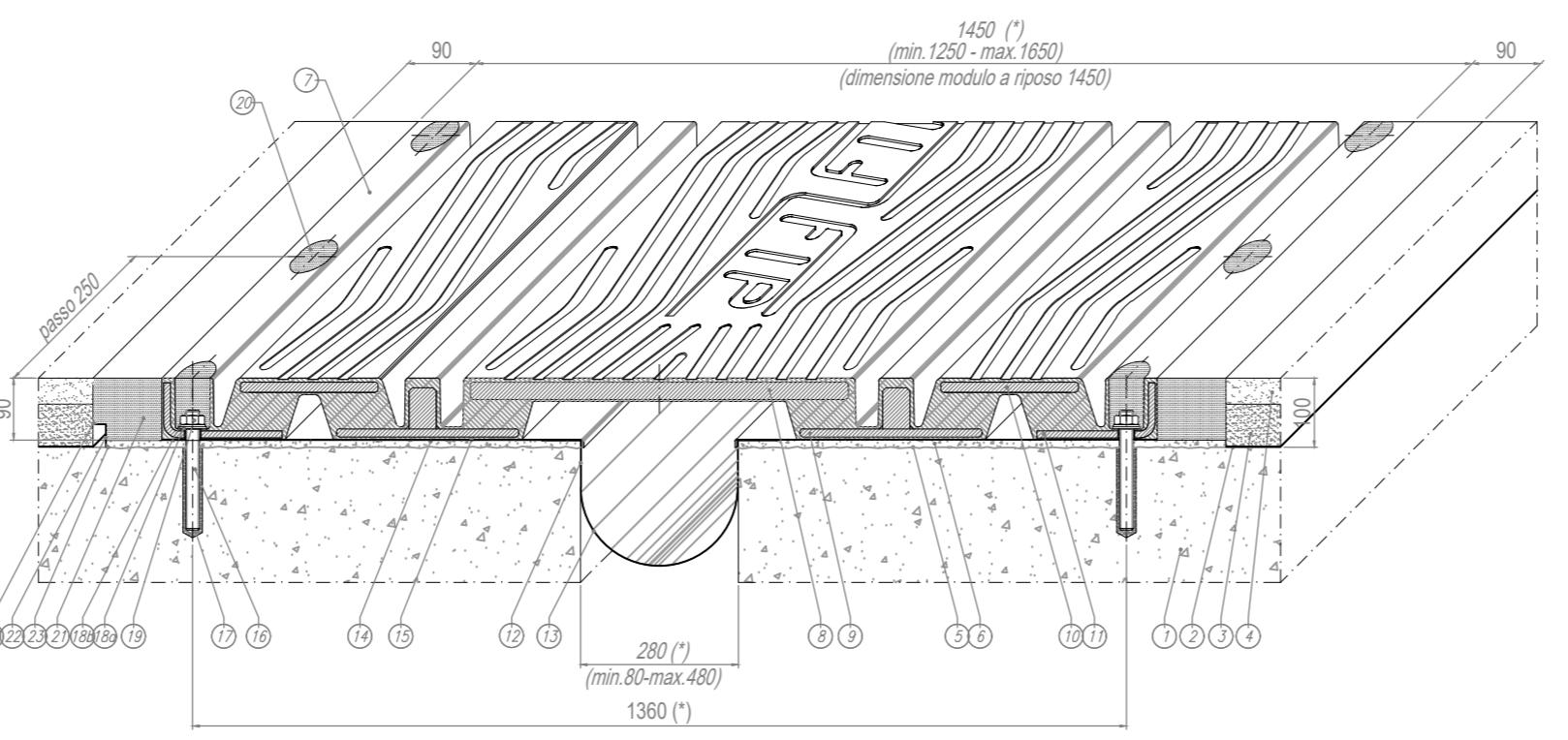


Table with 3 columns: POS. PEZZI, DESCRIZIONE - DIMENSIONI, MATERIALE. Lists materials for reinforcement bars and concrete.

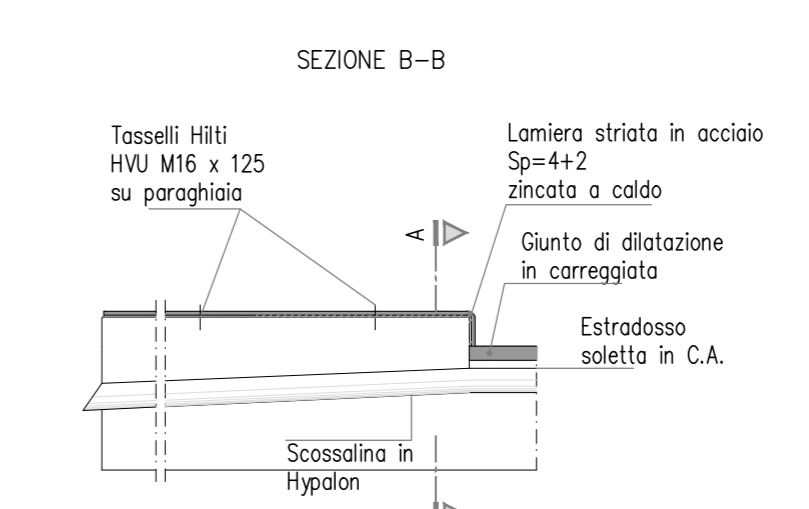
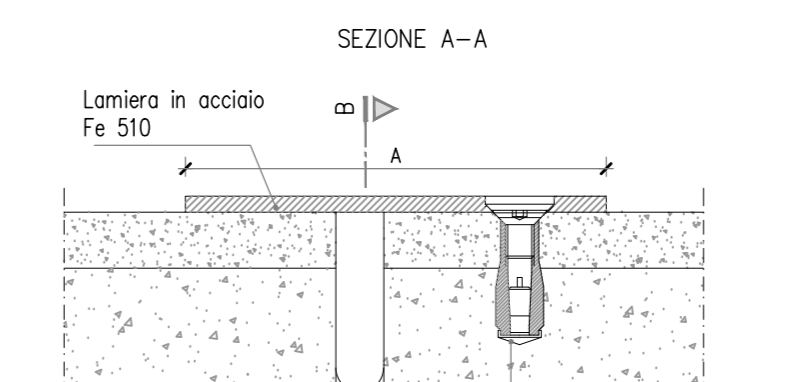
DETTAGLIO GIUNTO DI DILATAZIONE TIPO "GPE 400"



NOTA: MISURA INFERITA ALLA TEMPERATURA MEDIA ANNUA DEL SITO DI INSTALLAZIONE...

Table with 2 columns: POSPEZZI DESCRIZIONE - DIMENSIONI, MATERIALE. Lists materials for reinforcement bars and concrete.

DETTAGLIO GIUNTO DI DILATAZIONE SU MARCIAPIEDI E CORDOLI



CARATTERISTICHE GIUNTO COPRIMARCIPEDE: A (mm), B (mm), Sviluppo (m), SCORRIMENTO DA 100 mm a 1000 mm.

Project information block including ANAS S.p.A. logo, project name 'OPERE D'ARTE NUOVI VIADOTTI - VIADOTTO BAUCINA Vincoli', project code 'F41B03000230001', and various approval stamps and signatures.