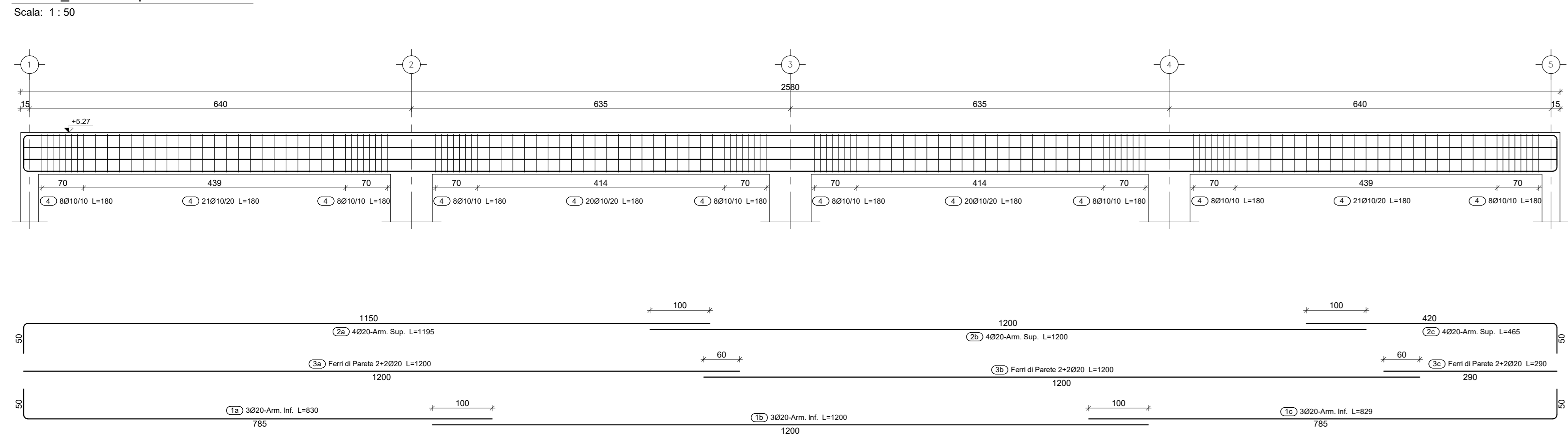
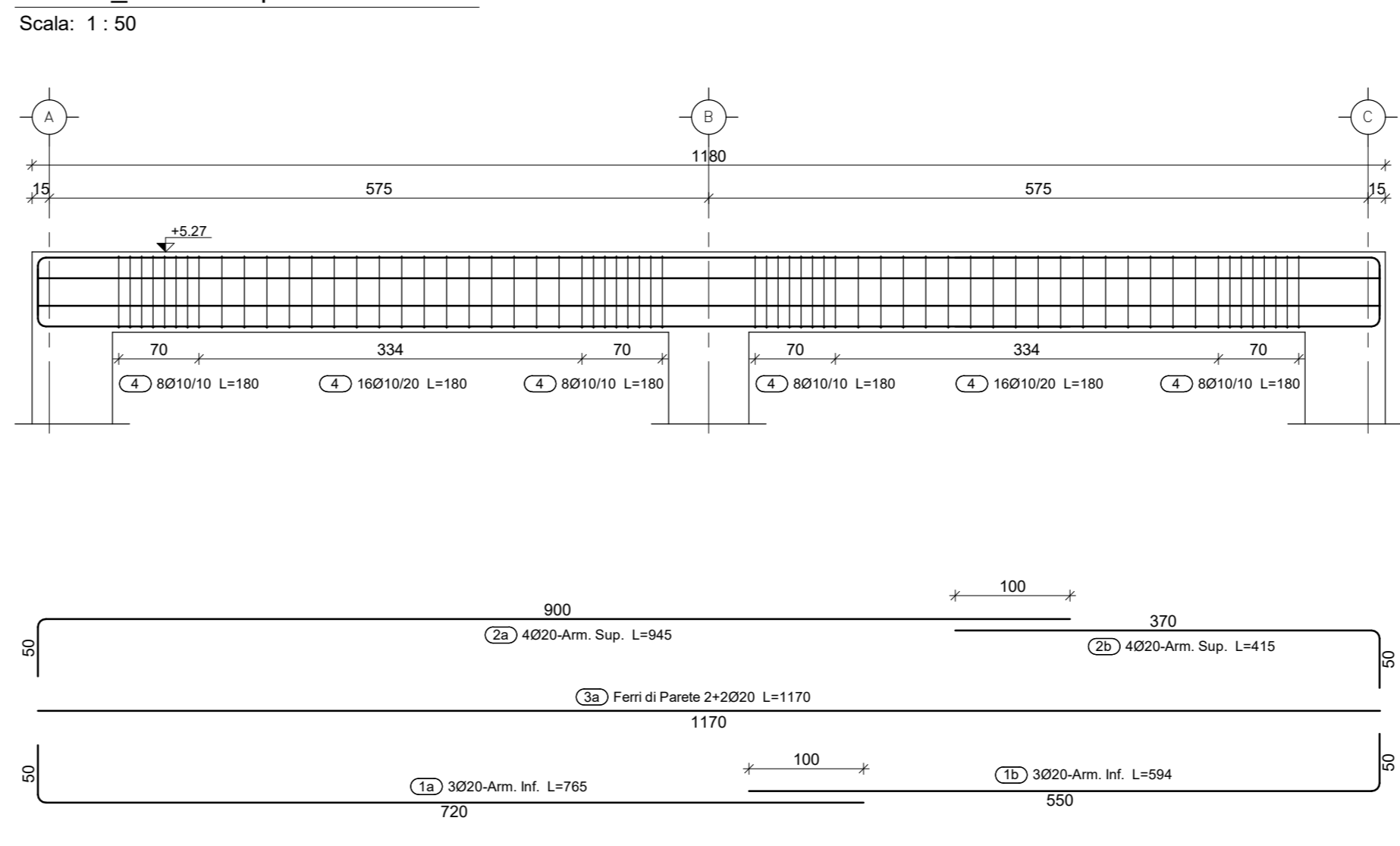


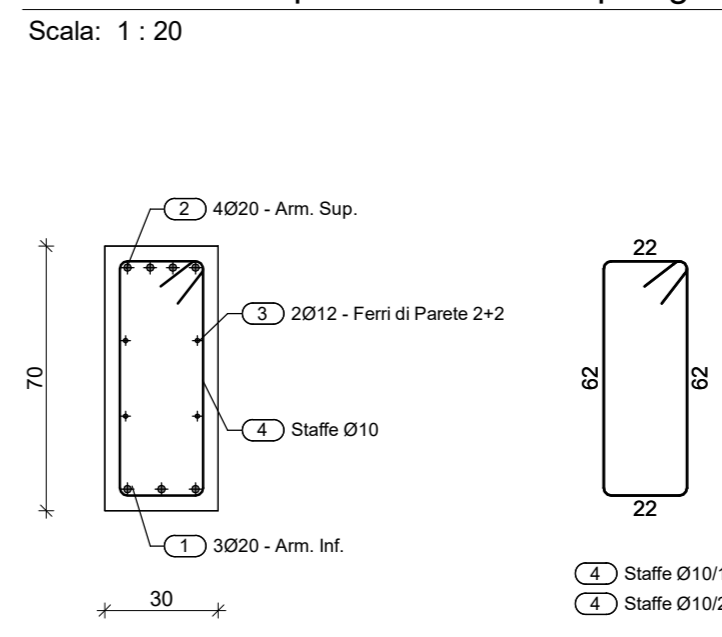
TRI AC Travi di Imposta - Assi A&C



TRI 1-5 Travi di Imposta - Assi 1&5

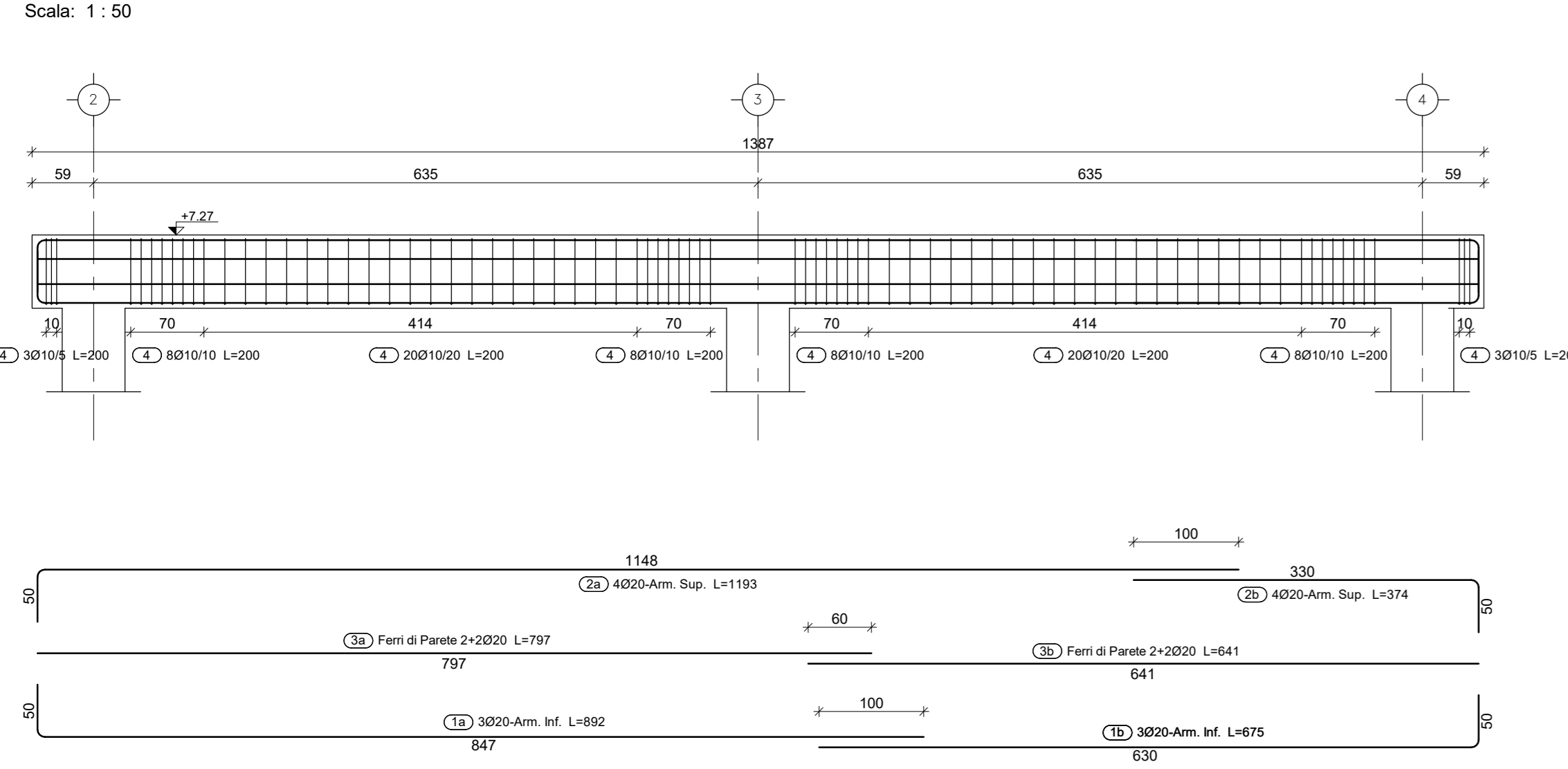


TRI - Travi di Imposta - Sezione Tipologica

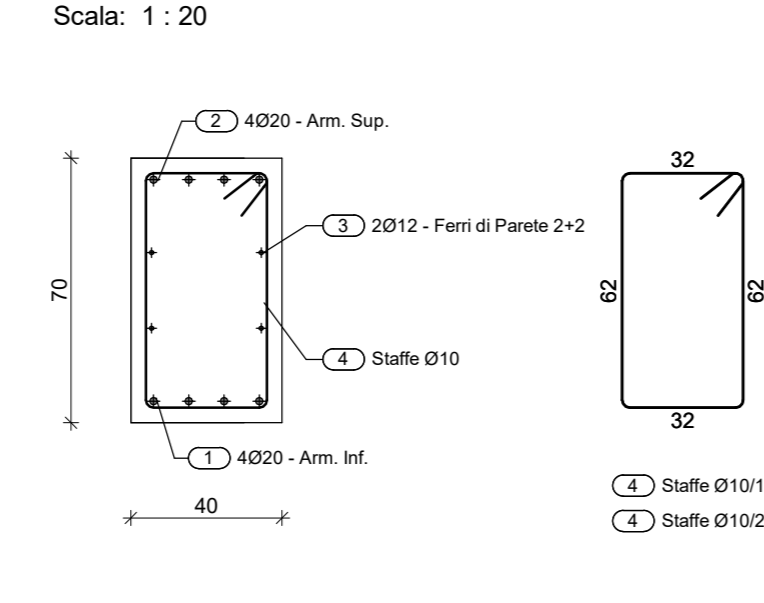


- General notes for TRI beams regarding measurements, reinforcement, and construction details.

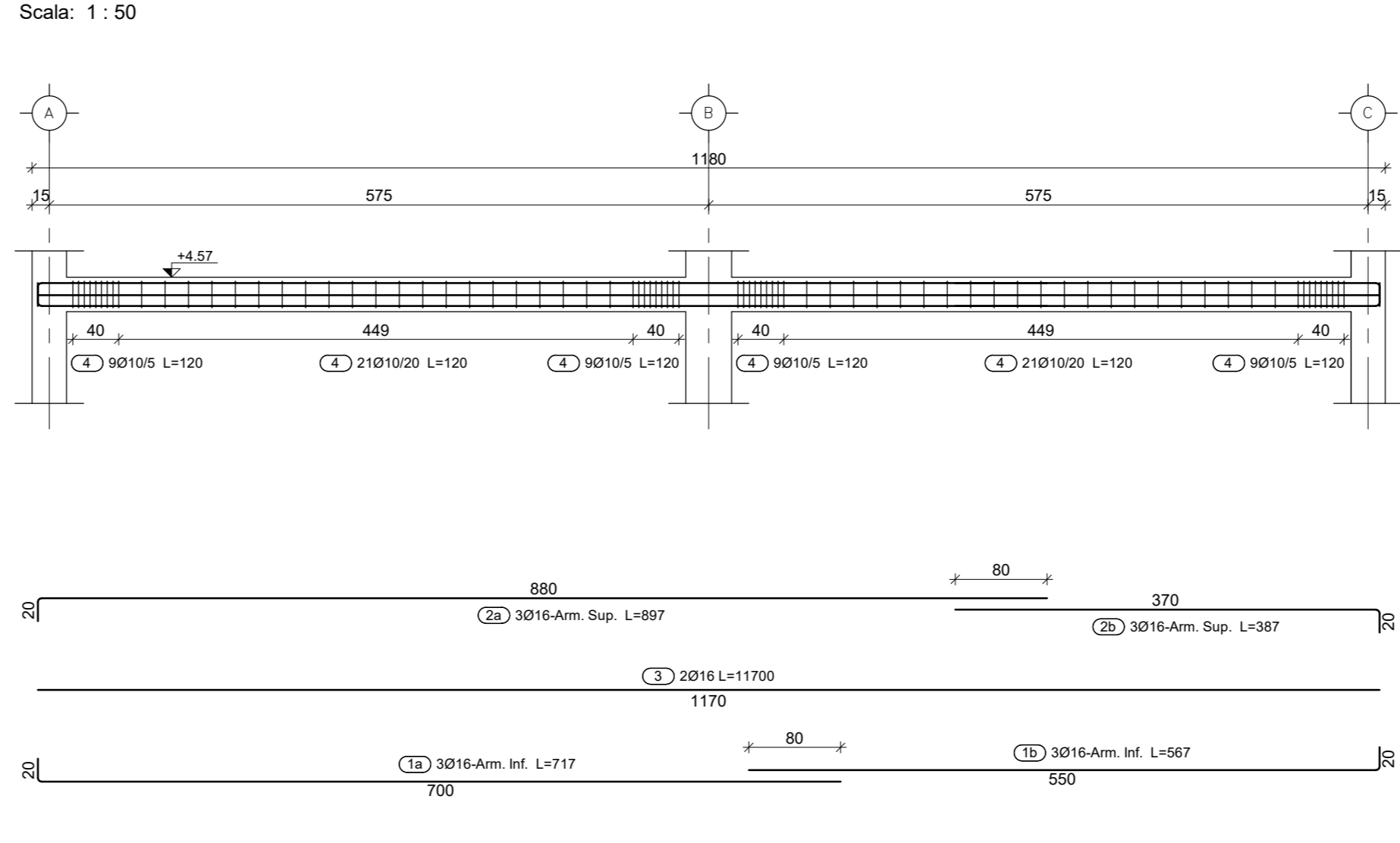
TRC Trave di Colmo



TRC Trave di Colmo - Sezione Tipologica



TRCA Trave Catena



TRCA Trave Catena - Sezione Tipologica

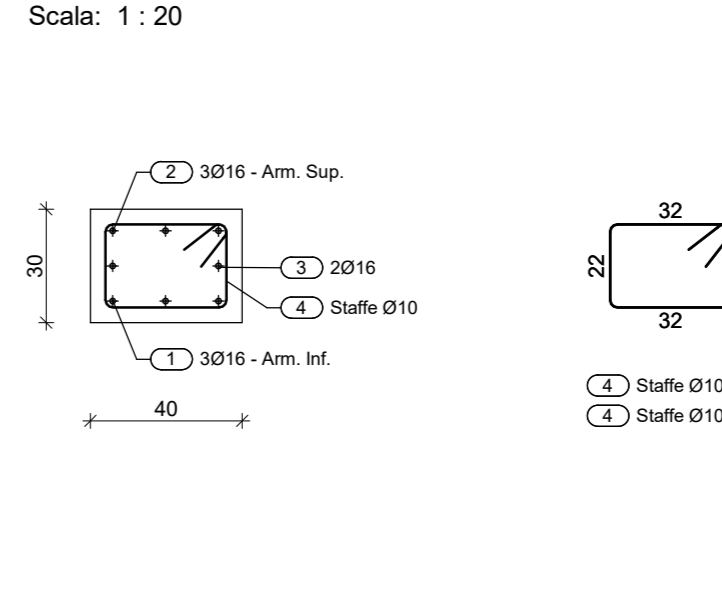
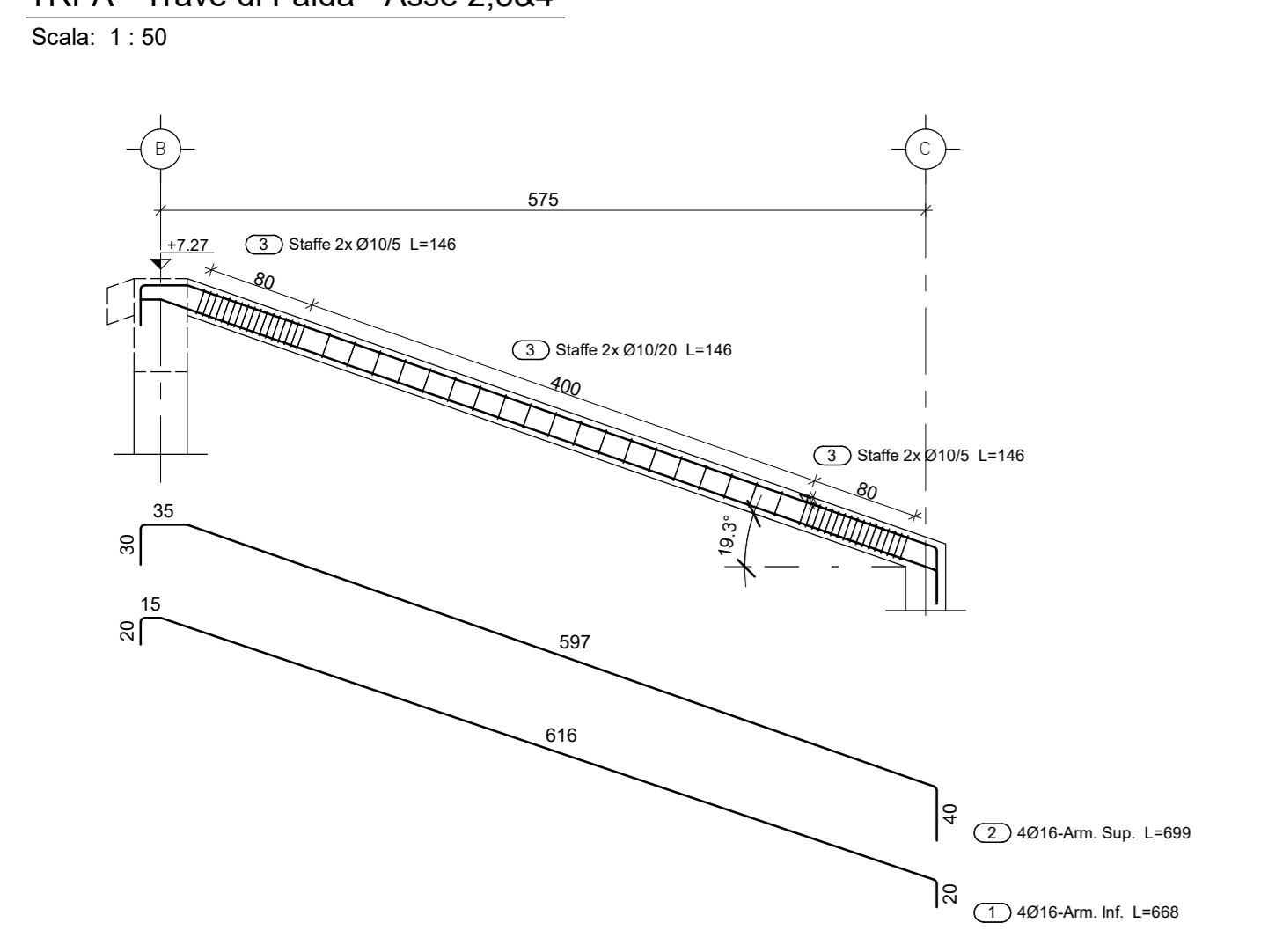
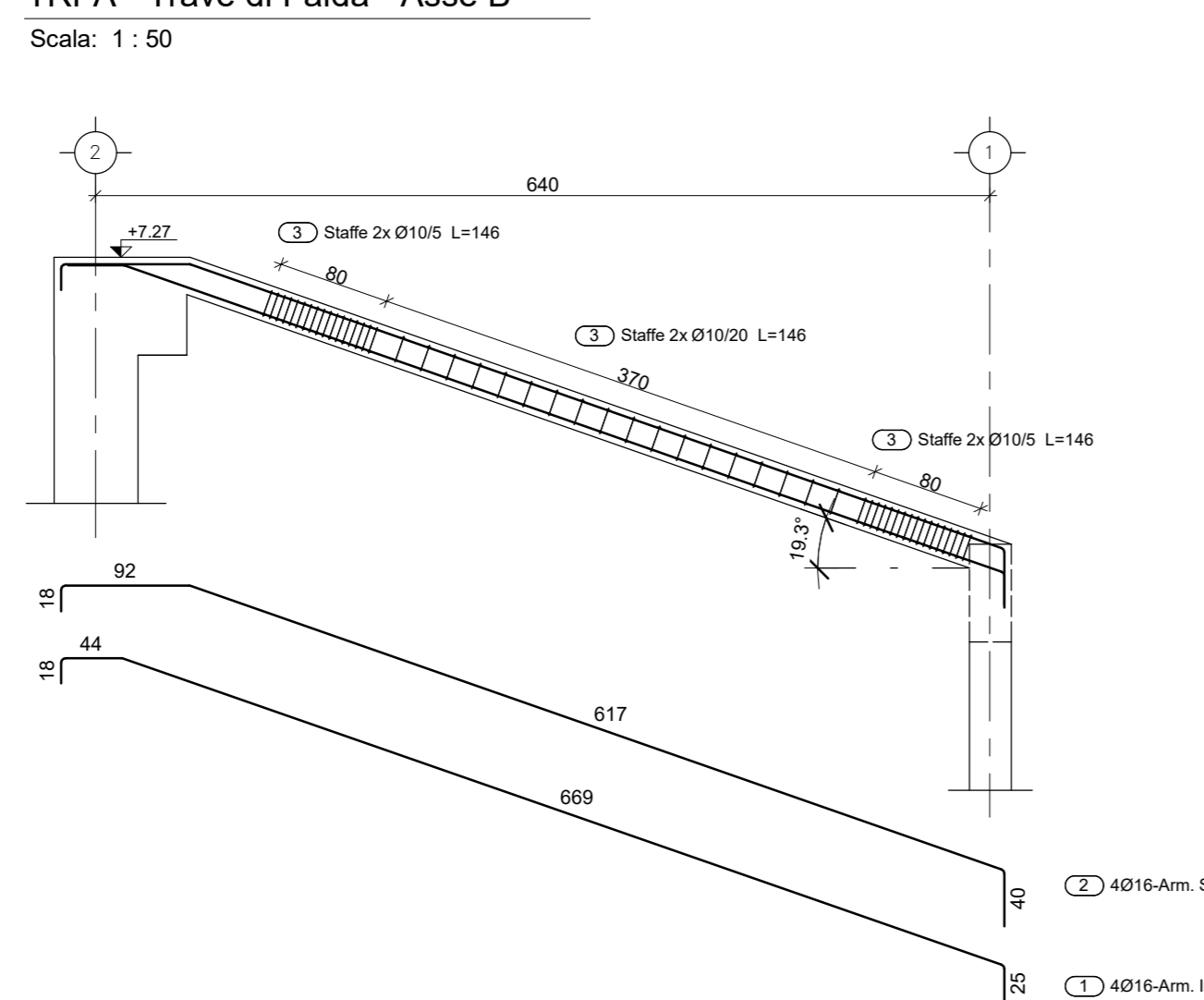


Table with 2 columns: OPERA TIPO and CARATTERISTICHE PRESTAZIONALI DEL CALCESTRUZZO (NTC 2008 - UNI EN 206:2016 - UNI 11104:2004)

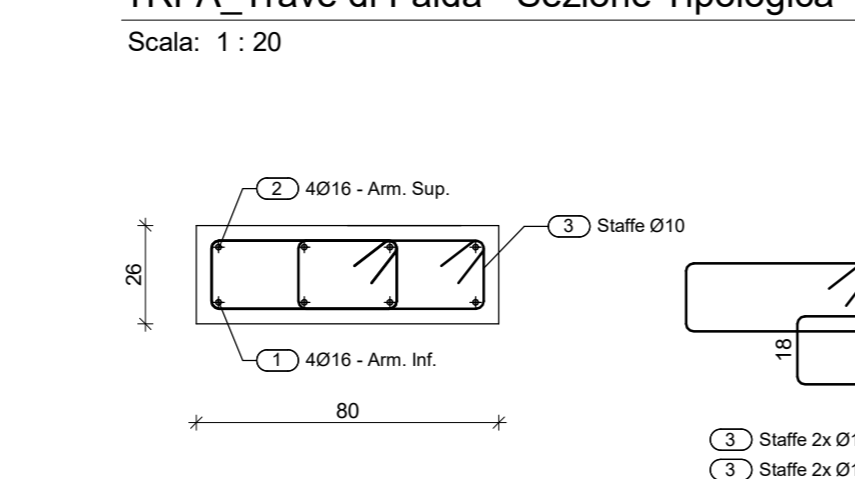
TRFA - Trave di Falda - Asse 2,3&4



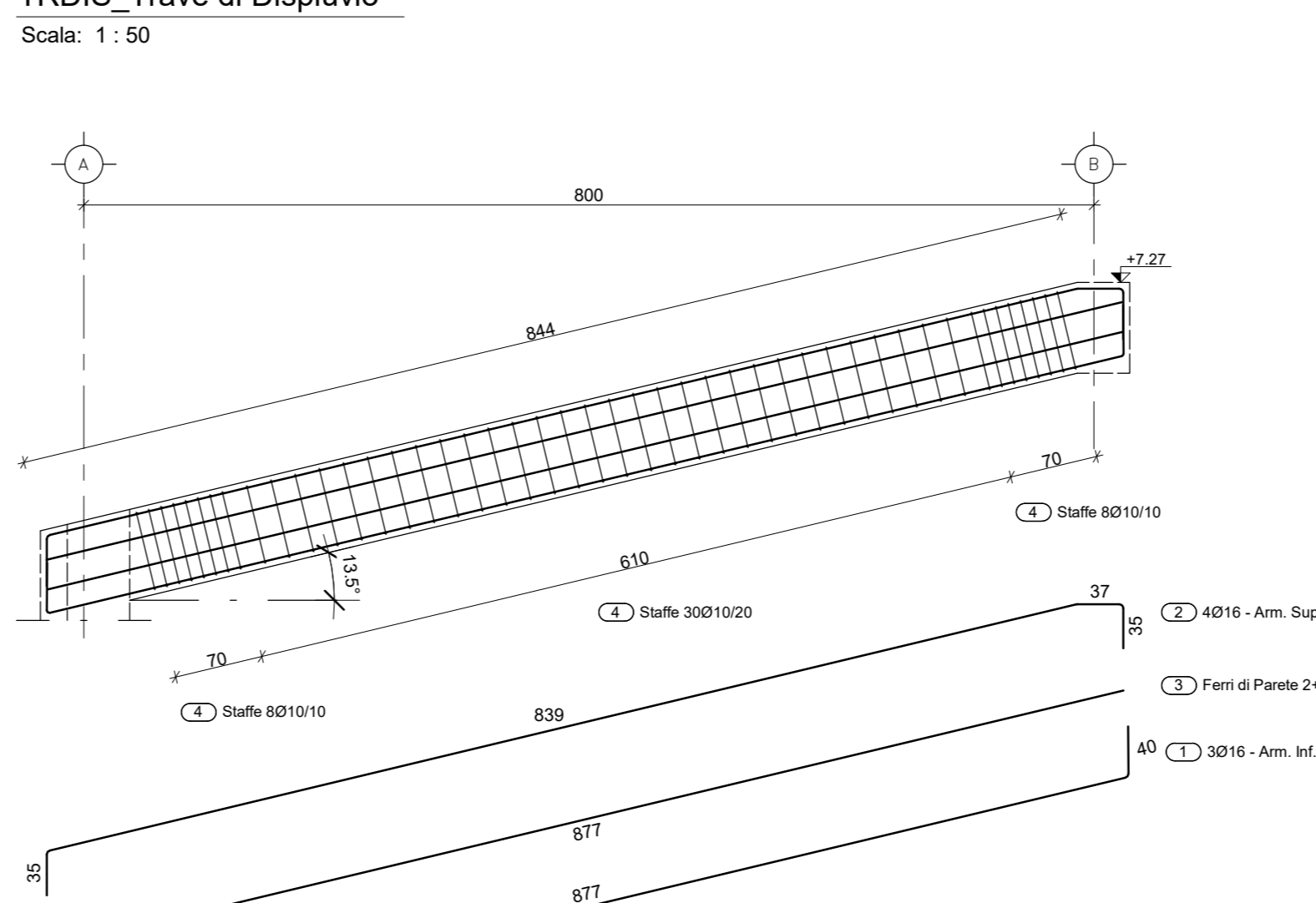
TRFA - Trave di Falda - Asse B



TRFA Trave di Falda - Sezione Tipologica



TRDIS Trave di Displuio



TRDIS Trave di Displuio - Sezione Tipologica

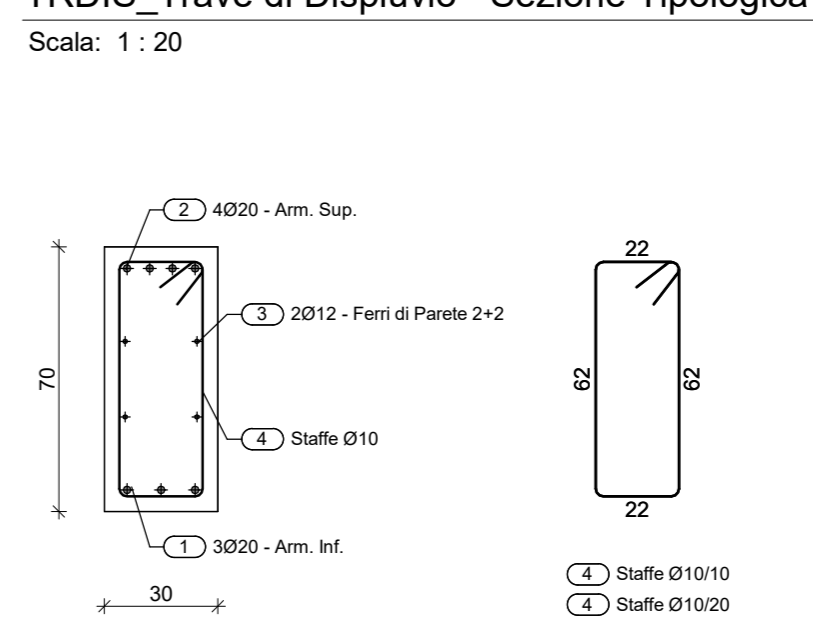
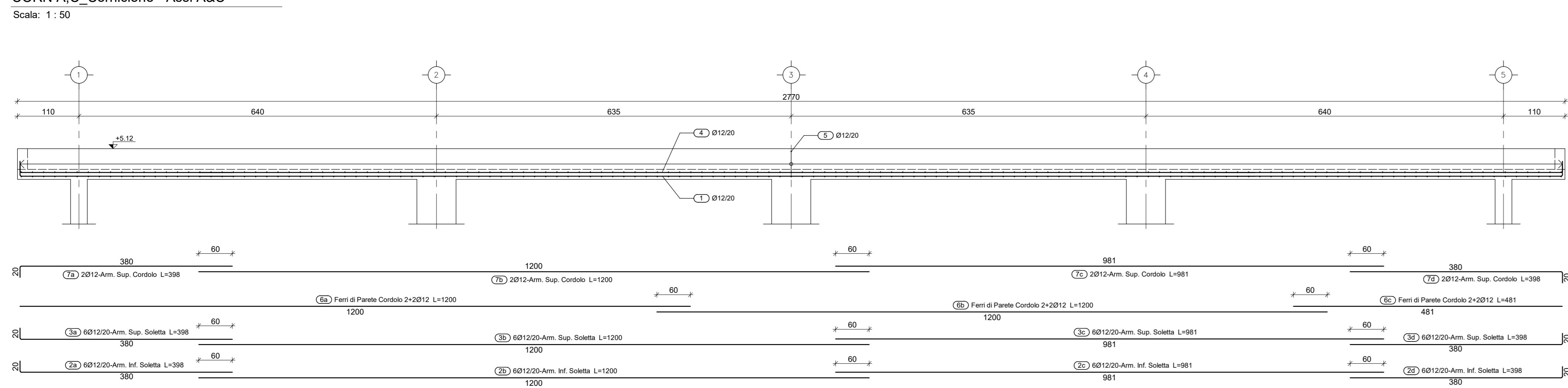


Table with 2 columns: CARATTERISTICHE DI RESISTENZA AL FUOCO and CARATTERISTICHE DI RESISTENZA AL FUOCO

CORN A.C. Cornicione - Assi A&C



CORN Cornicione - Sezione Tipologica

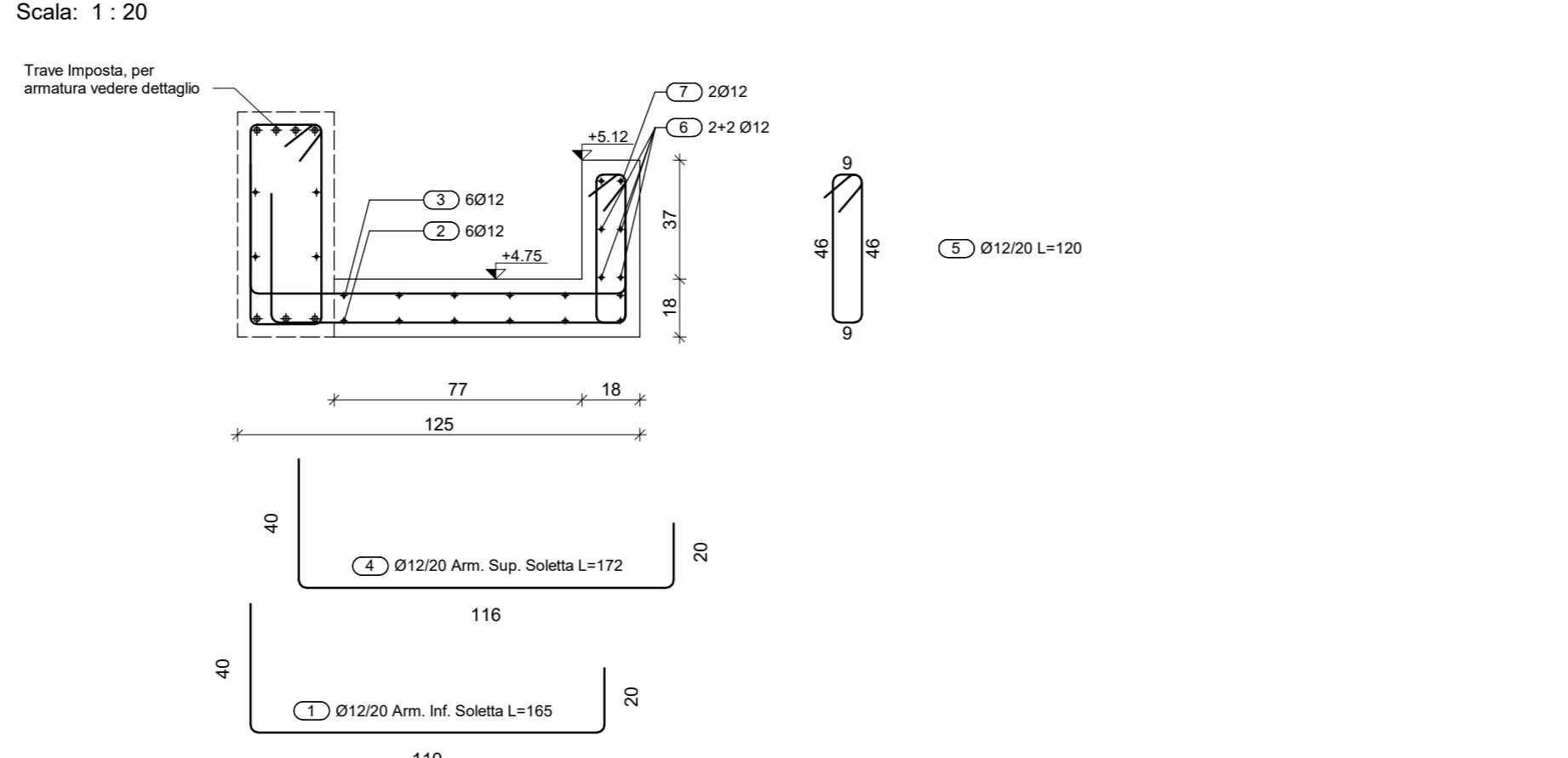
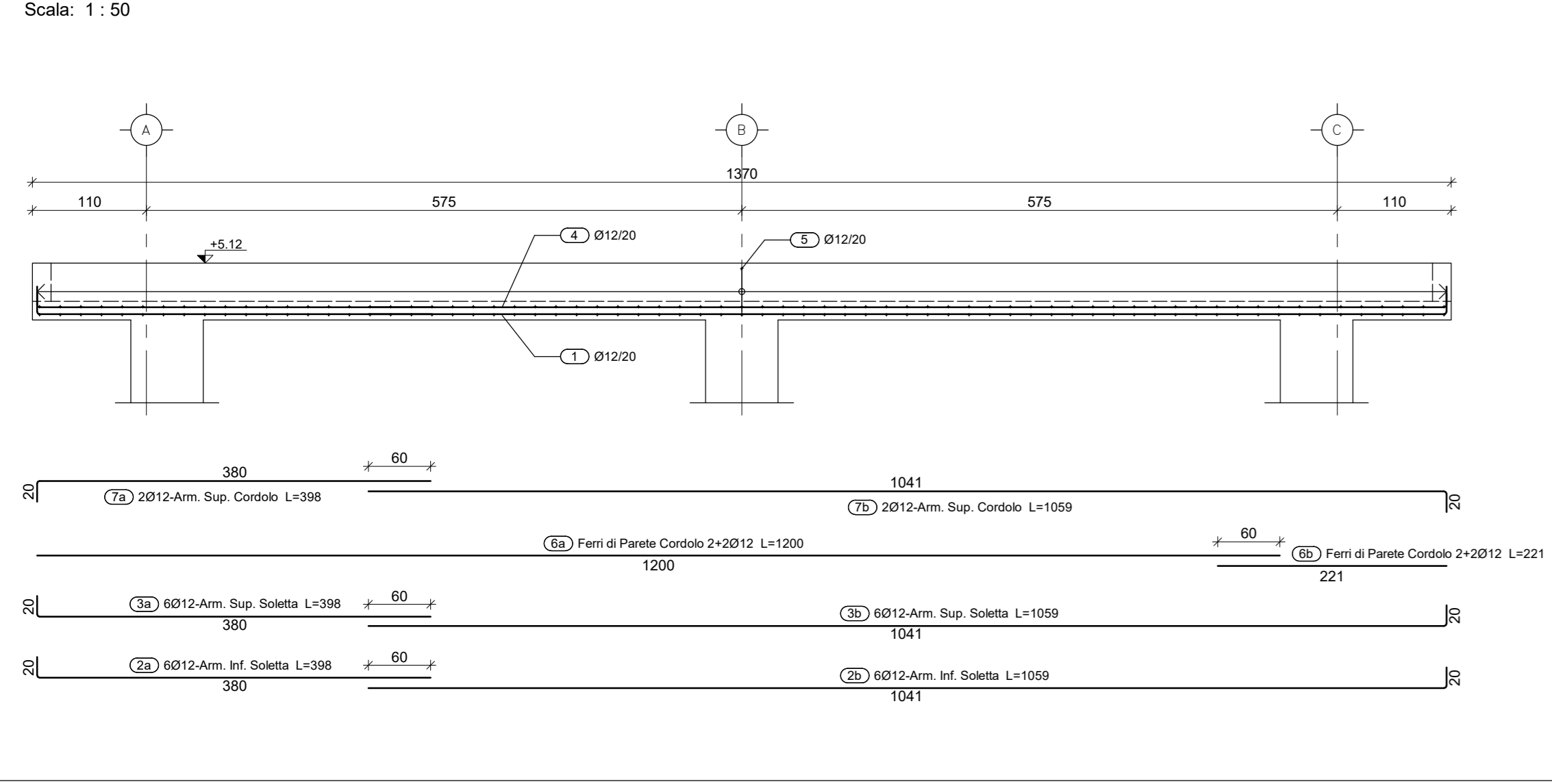
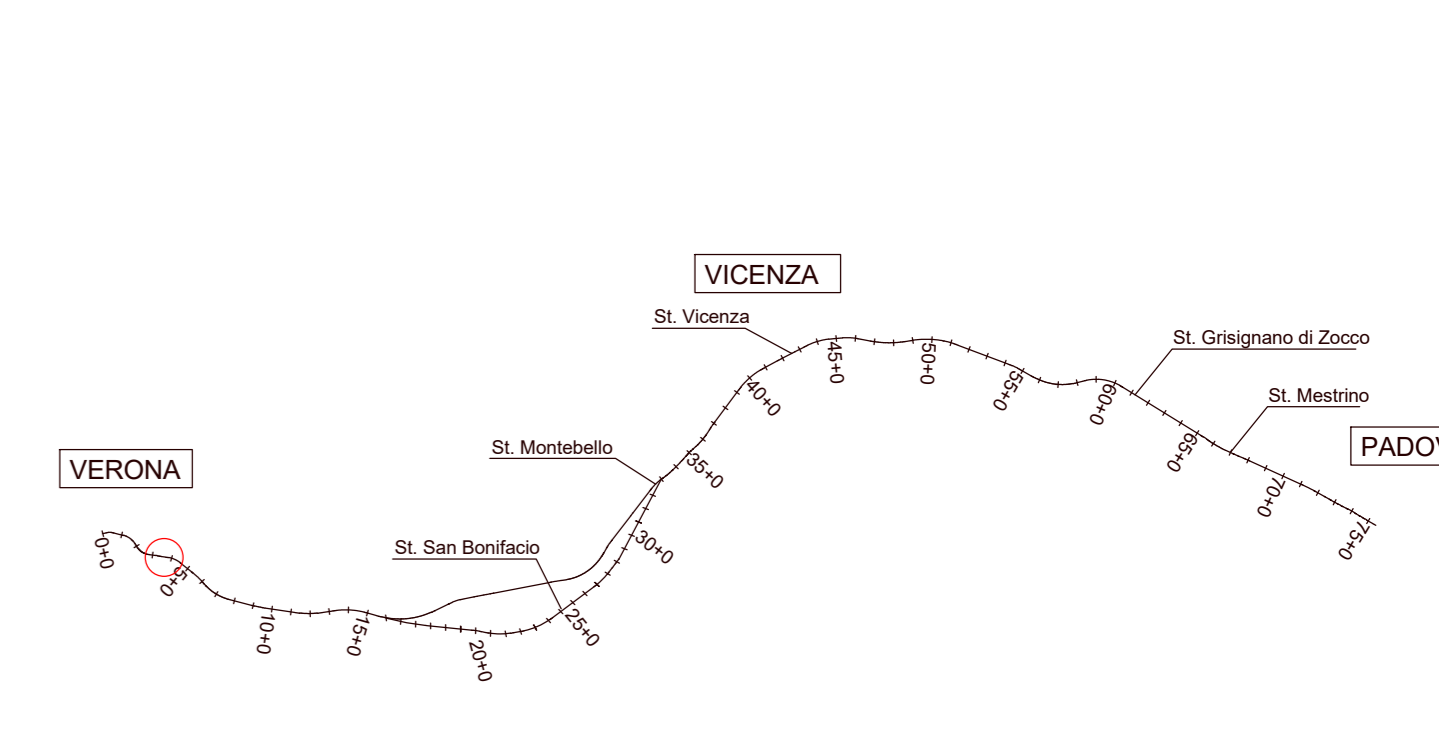


Table with 2 columns: FA02 - Cornicione and FA02 - Travi

CORN 1.5 Cornicione - Assi 1&5



K-MAP



Project information including COMMITENTE (RFI), GENERAL CONTRACTOR (Consorzio Irico-TV Due), and INFRASTRUTTURE FERROVIARIE STRATEGICHE DEFINITE DALLA LEGGE OBIETTIVO N.443/01.

Approval and signature section including VISTO CONSORZIO IRICO-TV DUE, VISTO CONSORZIO IRICO-TV DUE, and various project approval stamps.