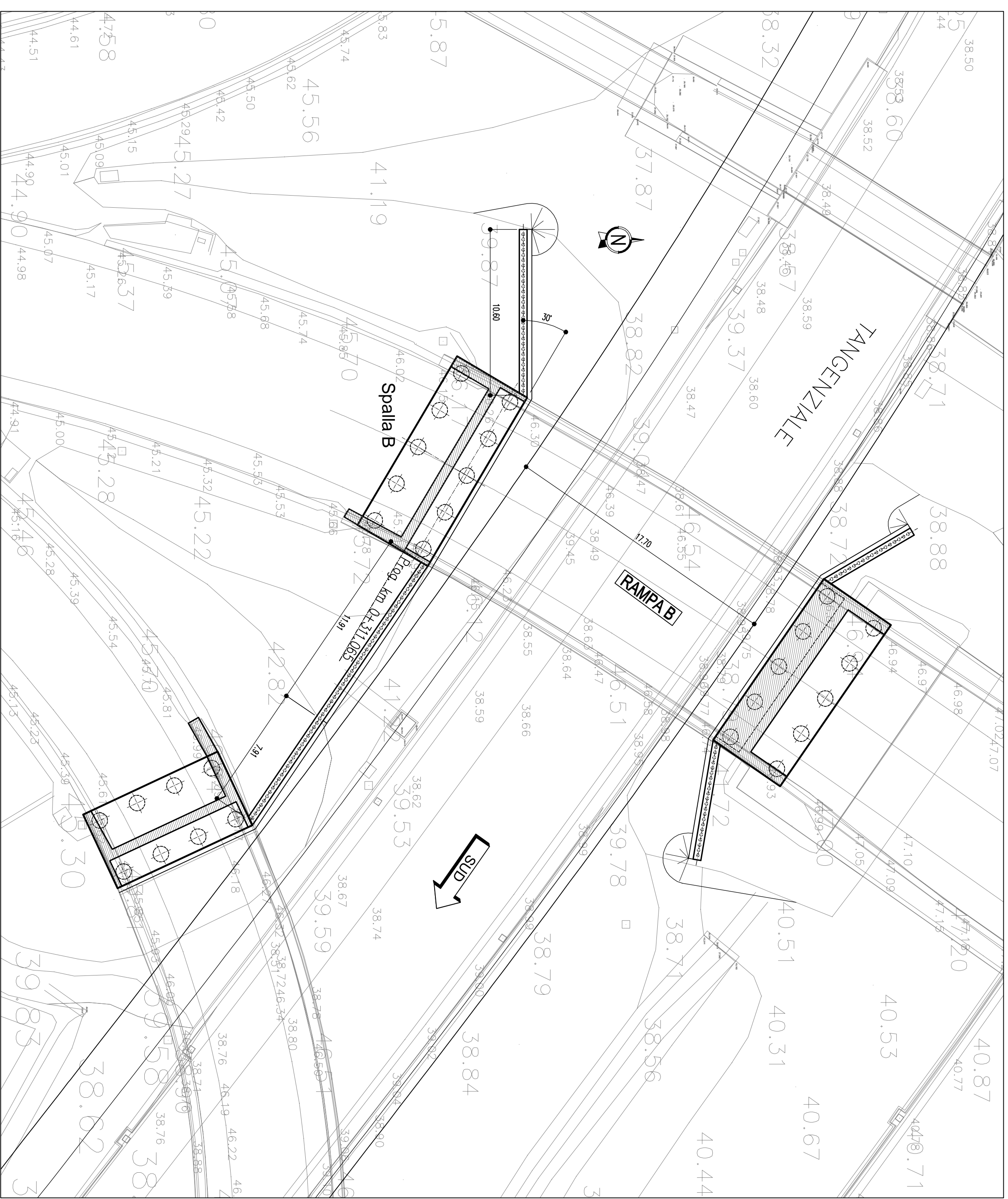


PLANIMETRIA DEGLI INTERVENTI



PROSPETTO PLACCAGGIO SPALLA B

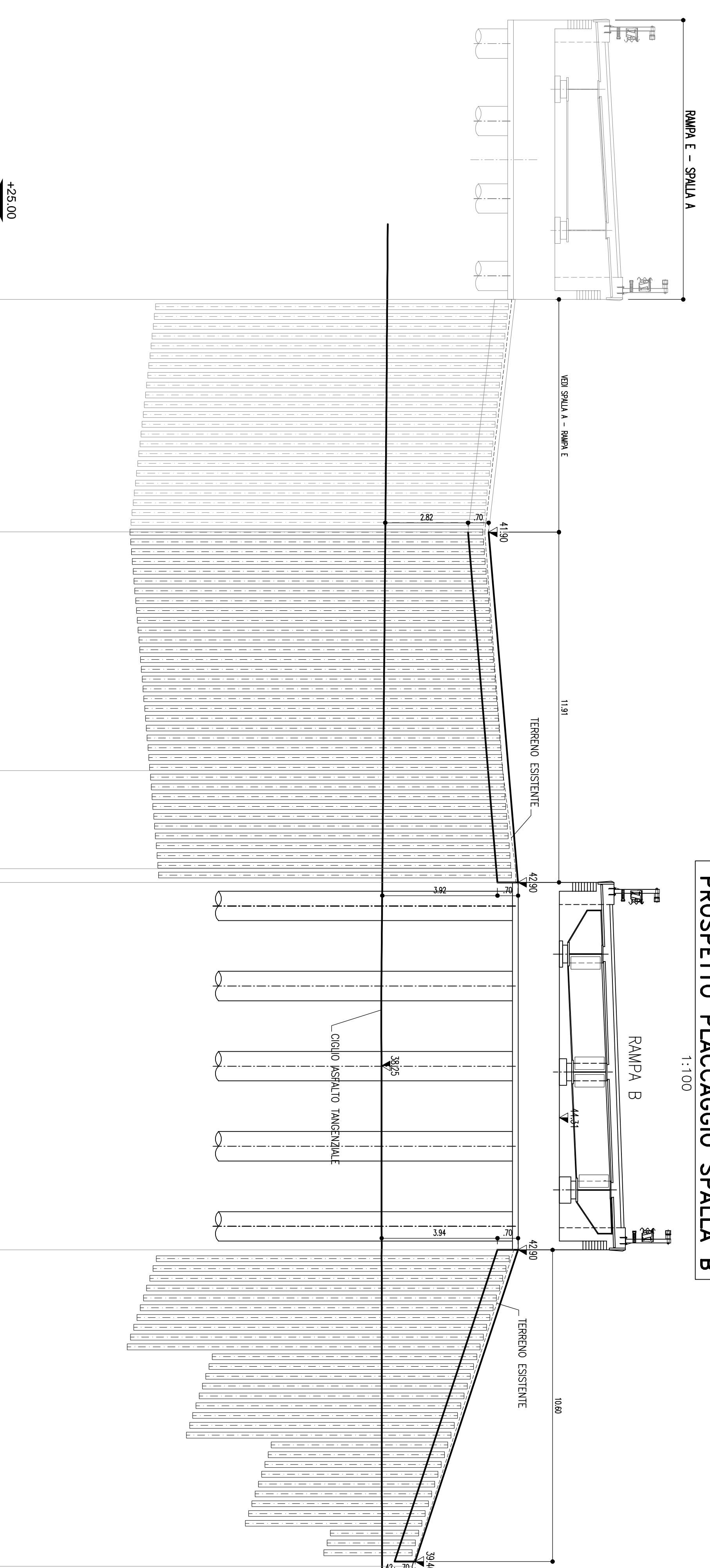
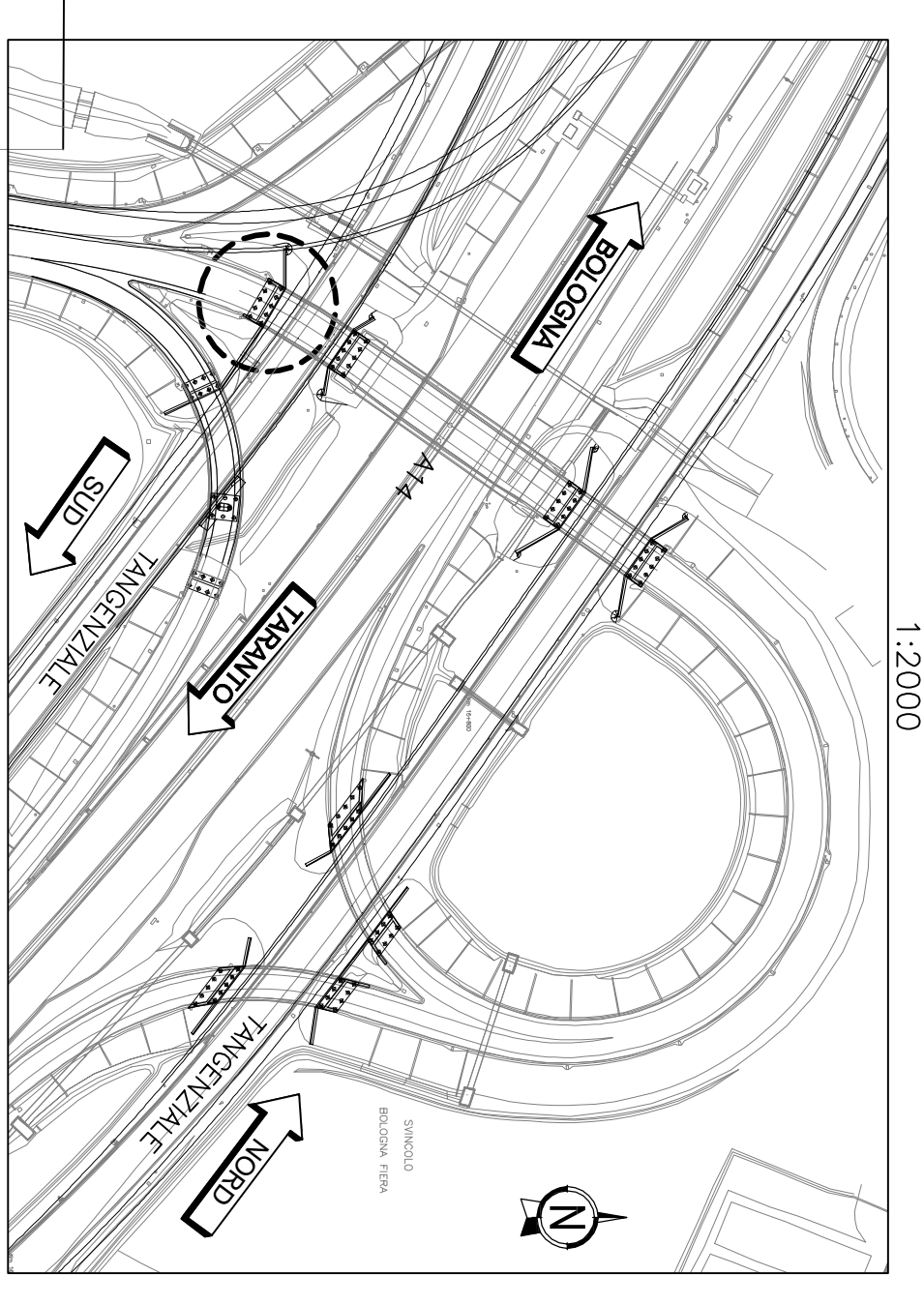


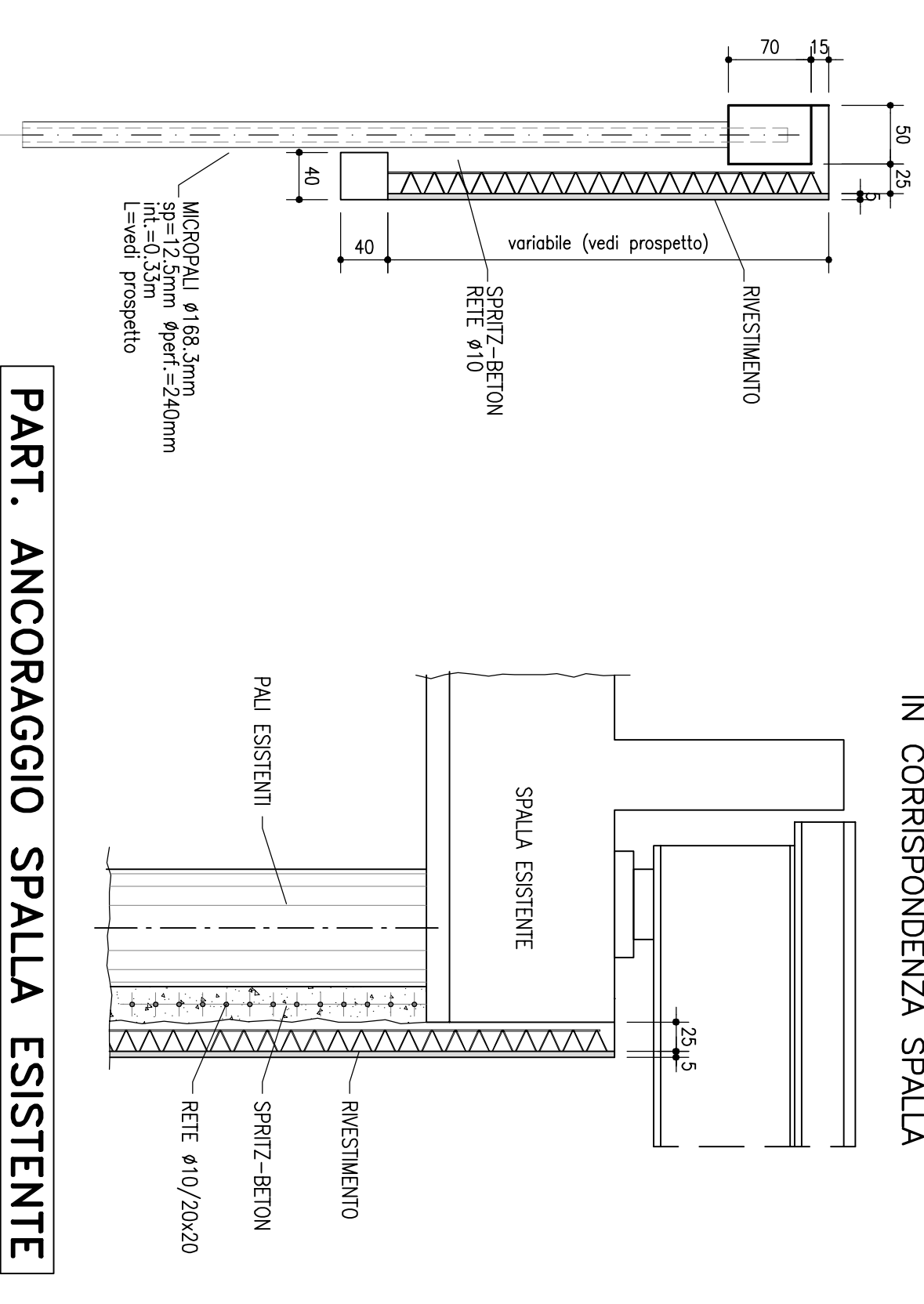
Table with 2 main columns: 'CARATTERISTICHE TECNICHE COMUNI' and 'MICROPALI VERTICALI'. It lists technical specifications for the micro-palis and provides a detailed table of their vertical characteristics, including height, diameter, and spacing.

KEY PLAN

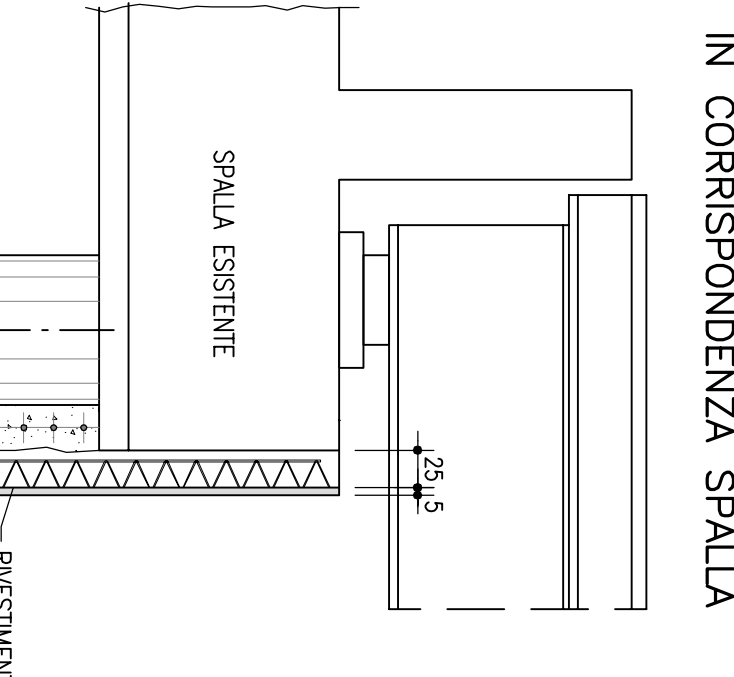


- FASI ESECUTIVE: 1. REALIZZAZIONE BERLINESI (MICROPALI E TRAVI); 2. REALIZZAZIONE PAVIMENTO IN ASPHALTO; 3. RIVESTIMENTO BERLINESI E SPALLA CON MONOLASTRA TRALOCMA.

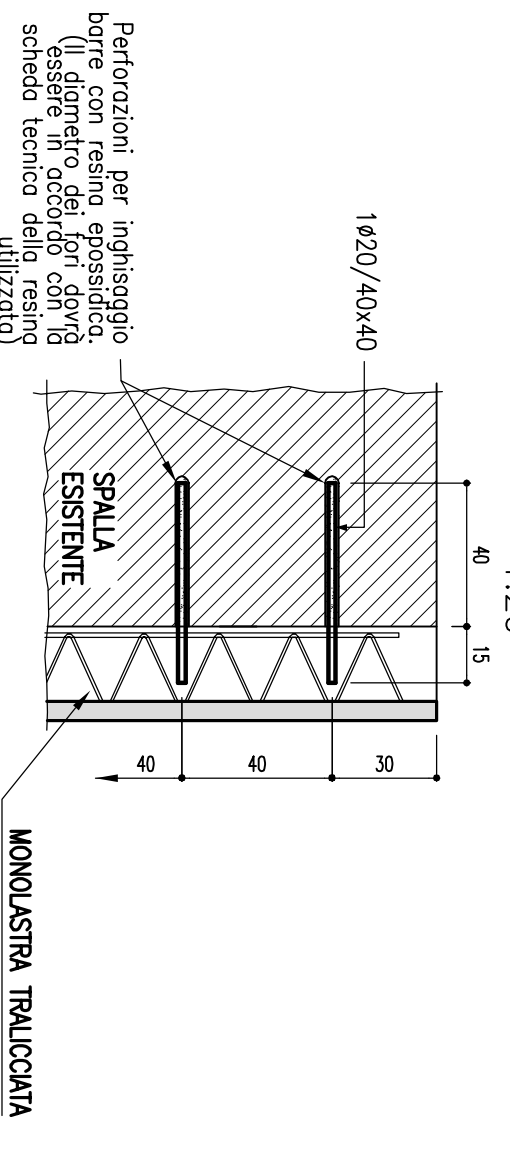
SEZIONE TIPO



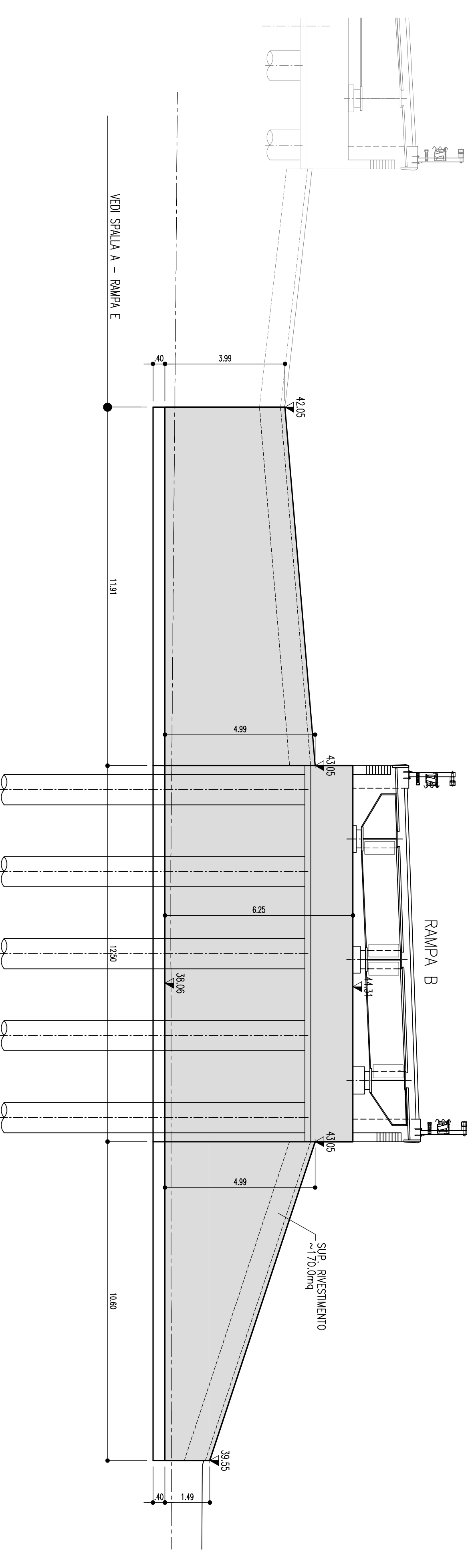
SEZIONE TIPO



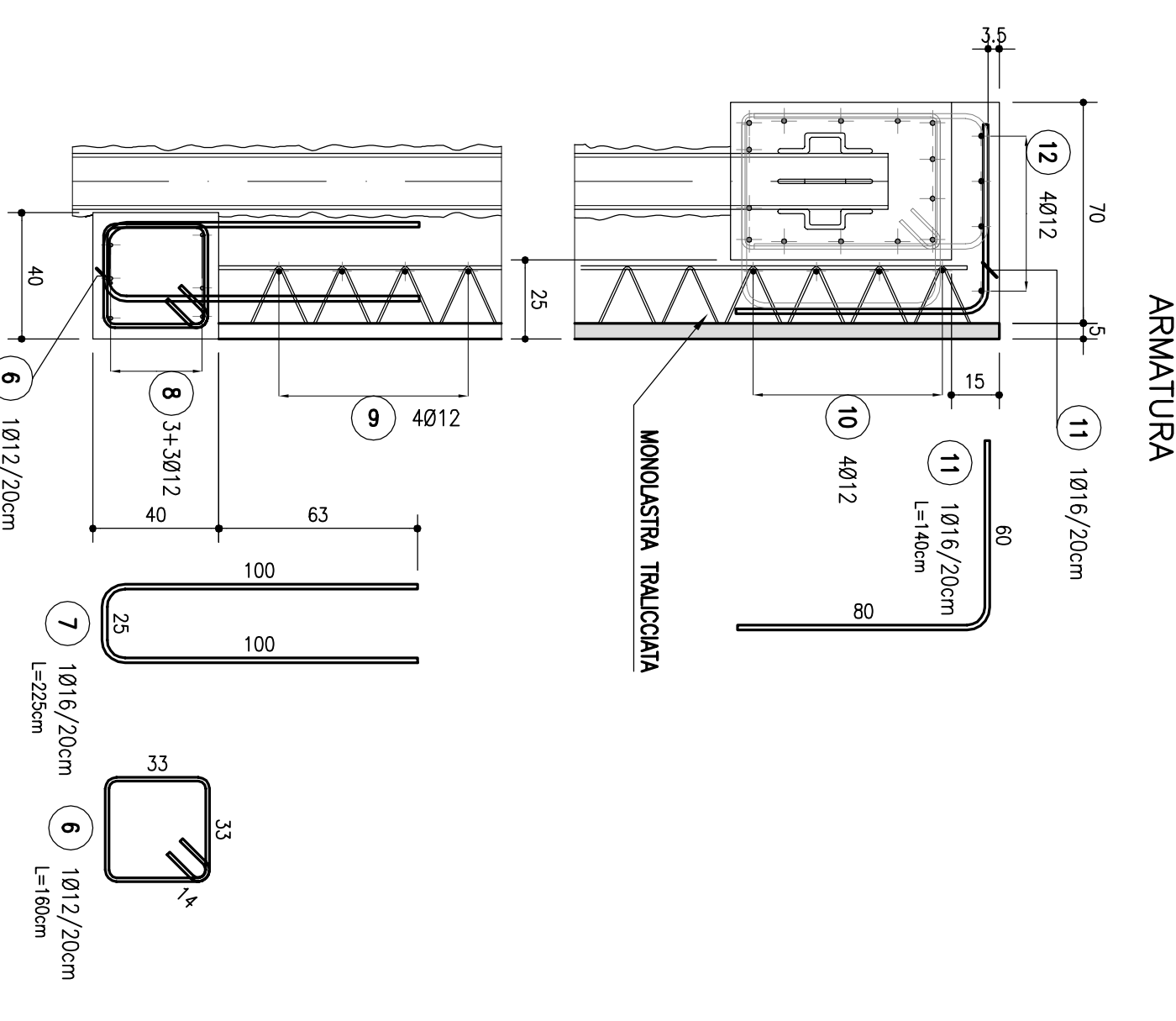
PART. ANCORAGGIO SPALLA ESISTENTE



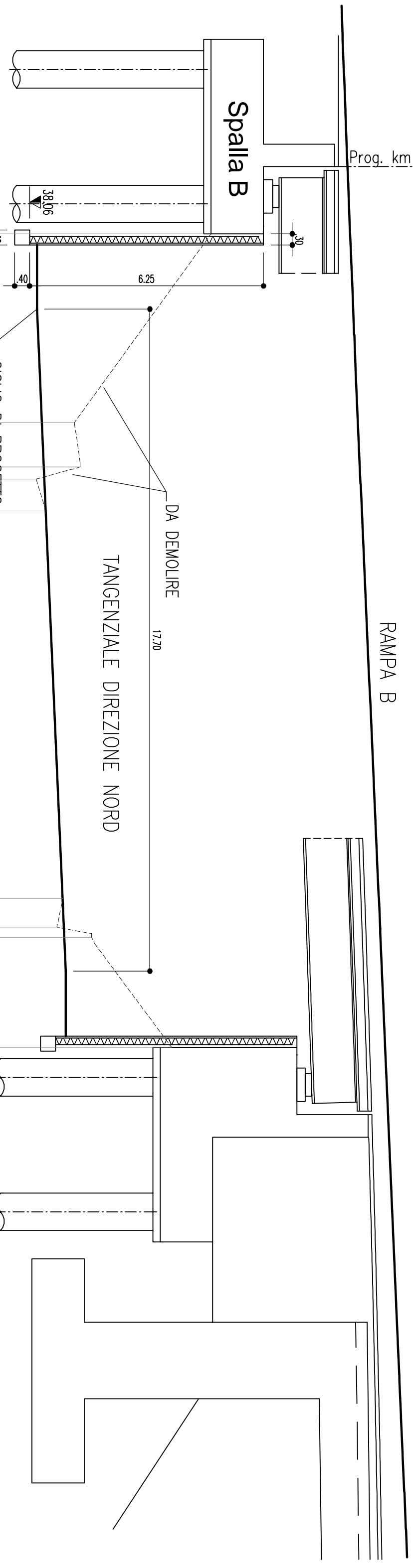
PROSPETTO RIVESTIMENTO SPALLA B



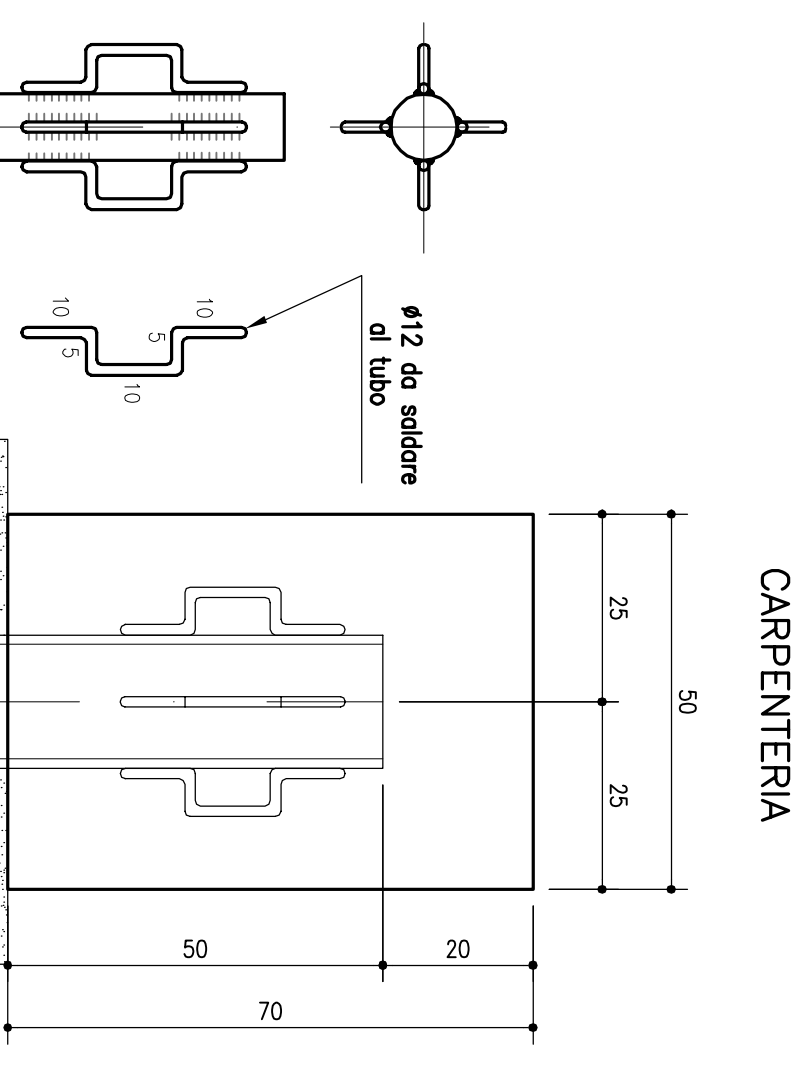
SEZIONE TIPO RIVESTIMENTO



SEZIONE IN CORR. SPALLA B



SEZIONE TIPO TRAVE



SEZIONE TIPO TRAVE

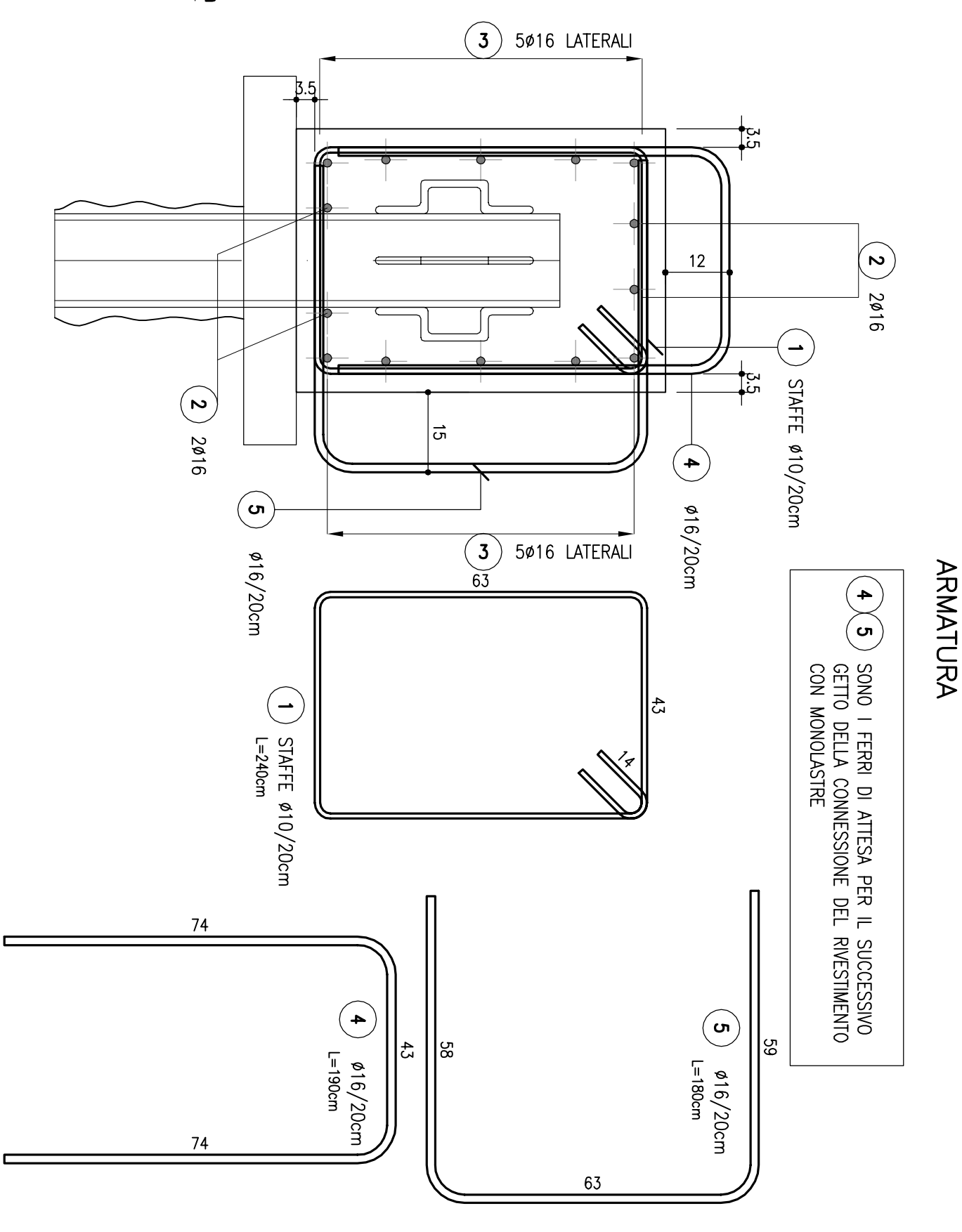


Table titled 'ESISTENZE PREZIOU' and 'QUOTE TERRENO' showing existing structures and ground levels.

TABELLA MATERIALI: Table listing the materials used in the project, including concrete, reinforcement, and micro-palis, with their specifications and quantities.

Autostrada (A14) : BOLOGNA-BARI-TARANTO
TRATTO: BOLOGNA, BORGO PANICALE - BOLOGNA SAN LAZZARO
POTENZIAMENTO IN SEDE DEL SISTEMA AUTOSTRADALE E TANGENZIALE DI BOLOGNA

101T-CAVALCAVIA DI SVINCOLO PK 15+777
PLACCCAGGIO SPALLE
TANGENZIALE SUD - PLACCCAGGIO SPALLA B
CARPENTERIA E ARMATURA

Project information block including logos for 'autostrade per l'Italia', 'spea', 'ARMATURAZIONE per Fibra', and 'MATERIE PLASTICHE PER LA CONSTRUCTION'.