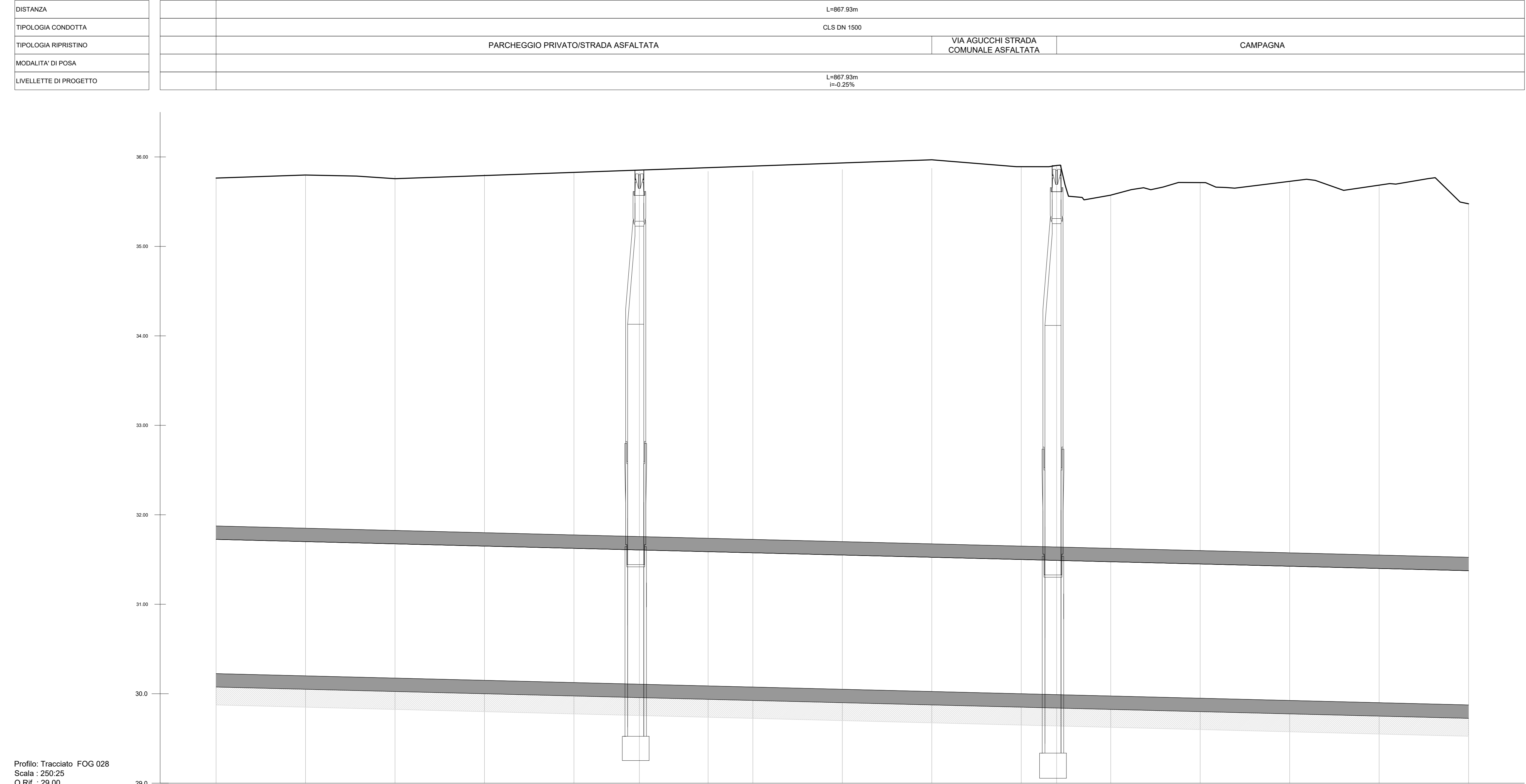
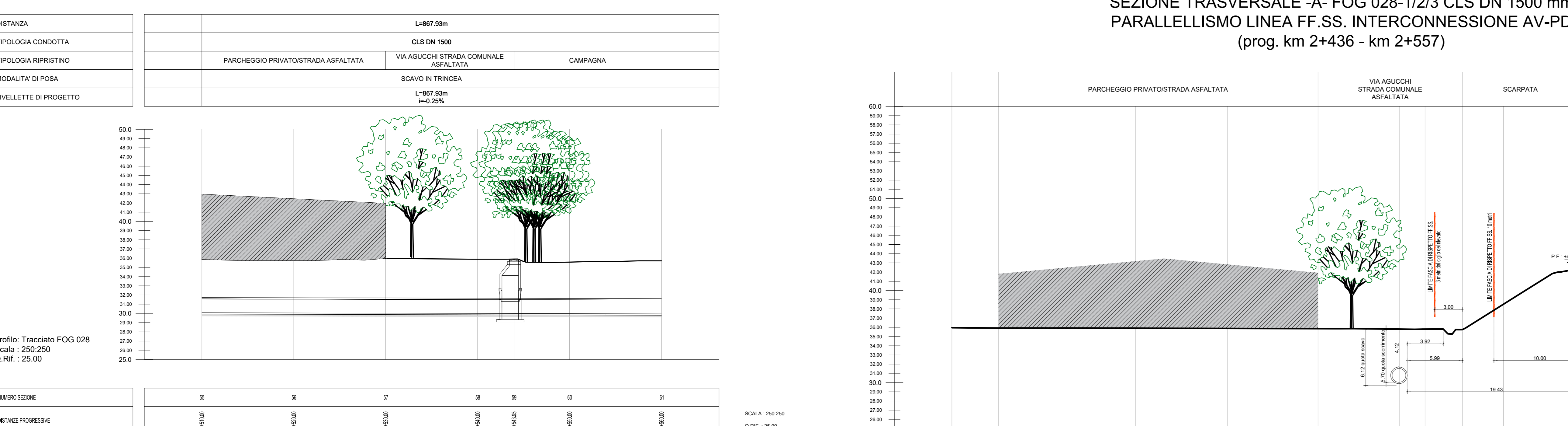


PROFilo LONGIUDINALE FOG 028-1/2/3 CLS DN 1500 mm
PARALLELLISMO LINEA FF.SS. INTERCONNESSIONE AV-PD
(prog. km 2+436 - km 2+557)



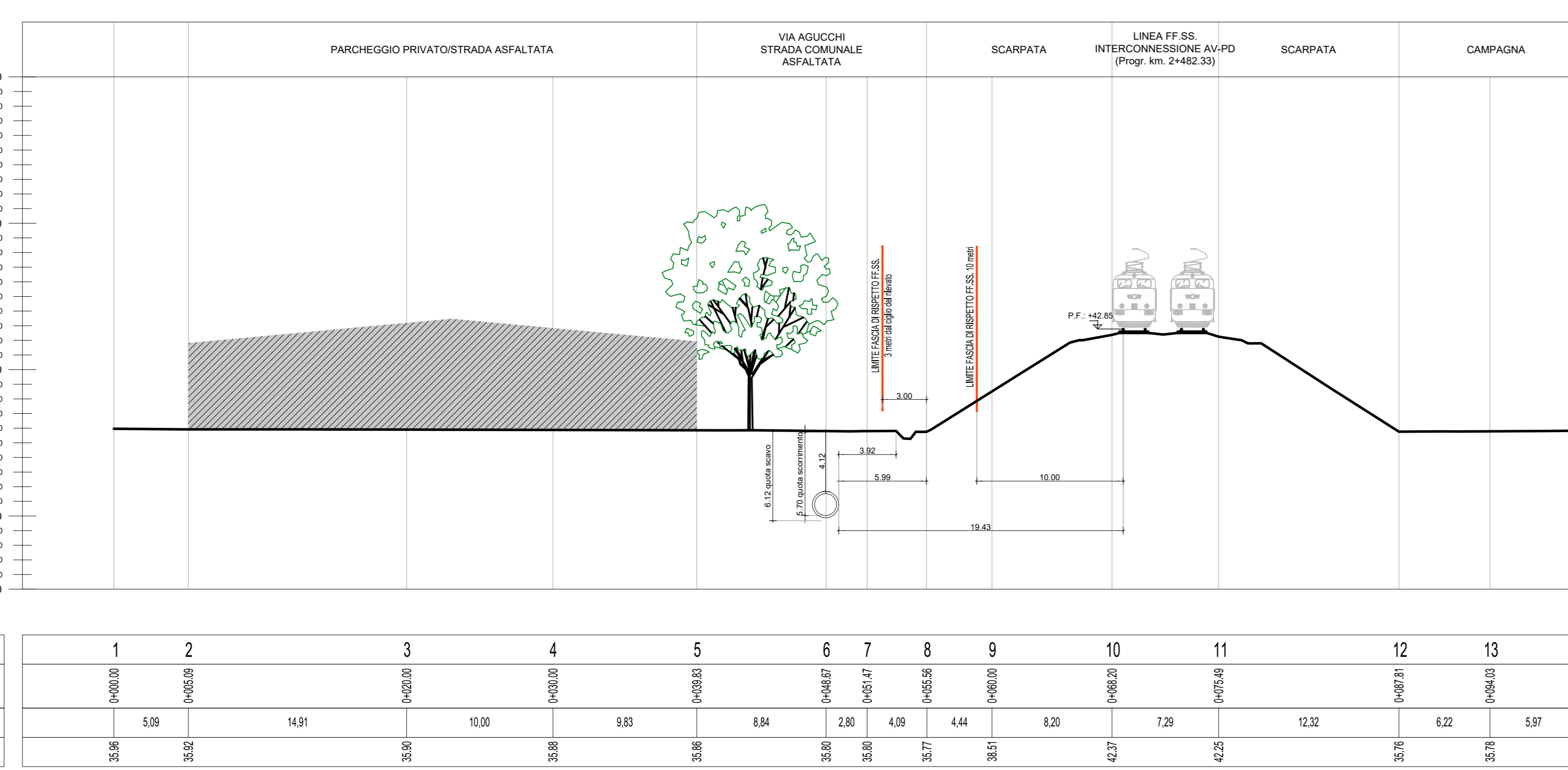
NUMERO SEZIONE	01	02	03	04	05	06	07	08	09	10	11	12	13	14	15	16	17	18	19	20	21	22	23	24	25	26	27	28	29	30		
DEFAZZE PROGRESSIVE		0+00	0+20	0+40	0+60	0+80	1+00	1+20	1+40	1+60	1+80	2+00	2+20	2+40	2+60	2+80	3+00	3+20	3+40	3+60	3+80	4+00	4+20	4+40	4+60	4+80	5+00	5+20	5+40	5+60	5+80	6+00
DEFAZZE PARZIALI		0+00	20	40	60	80	100	120	140	160	180	200	220	240	260	280	300	320	340	360	380	400	420	440	460	480	500	520	540	560	580	600
QUOTE TERRENO		25.0	26.5	27.5	28.5	29.5	30.5	31.5	32.5	33.5	34.5	35.5	36.5	37.5	38.5	39.5	40.5	41.5	42.5	43.5	44.5	45.5	46.5	47.5	48.5	49.5	50.0	50.5	51.0	51.5	52.0	52.5
QUOTE PROGETTO/SCAMBIO		25.0	26.5	27.5	28.5	29.5	30.5	31.5	32.5	33.5	34.5	35.5	36.5	37.5	38.5	39.5	40.5	41.5	42.5	43.5	44.5	45.5	46.5	47.5	48.5	49.5	50.0	50.5	51.0	51.5	52.0	52.5
QUOTE SCAVO			0.0	0.0	0.0	0.0	0.0	0.0	0.0	0.0	0.0	0.0	0.0	0.0	0.0	0.0	0.0	0.0	0.0	0.0	0.0	0.0	0.0	0.0	0.0	0.0	0.0	0.0	0.0	0.0	0.0	0.0
ALTEZZA SCAVO			0.0	0.0	0.0	0.0	0.0	0.0	0.0	0.0	0.0	0.0	0.0	0.0	0.0	0.0	0.0	0.0	0.0	0.0	0.0	0.0	0.0	0.0	0.0	0.0	0.0	0.0	0.0	0.0	0.0	0.0

SEZIONE LONGIUDINALE FOG 028-1/2/3 CLS DN 1500 mm
PARALLELLISMO LINEA FF.SS. INTERCONNESSIONE AV-PD
(prog. km 2+492.68 - km 2+532.89)



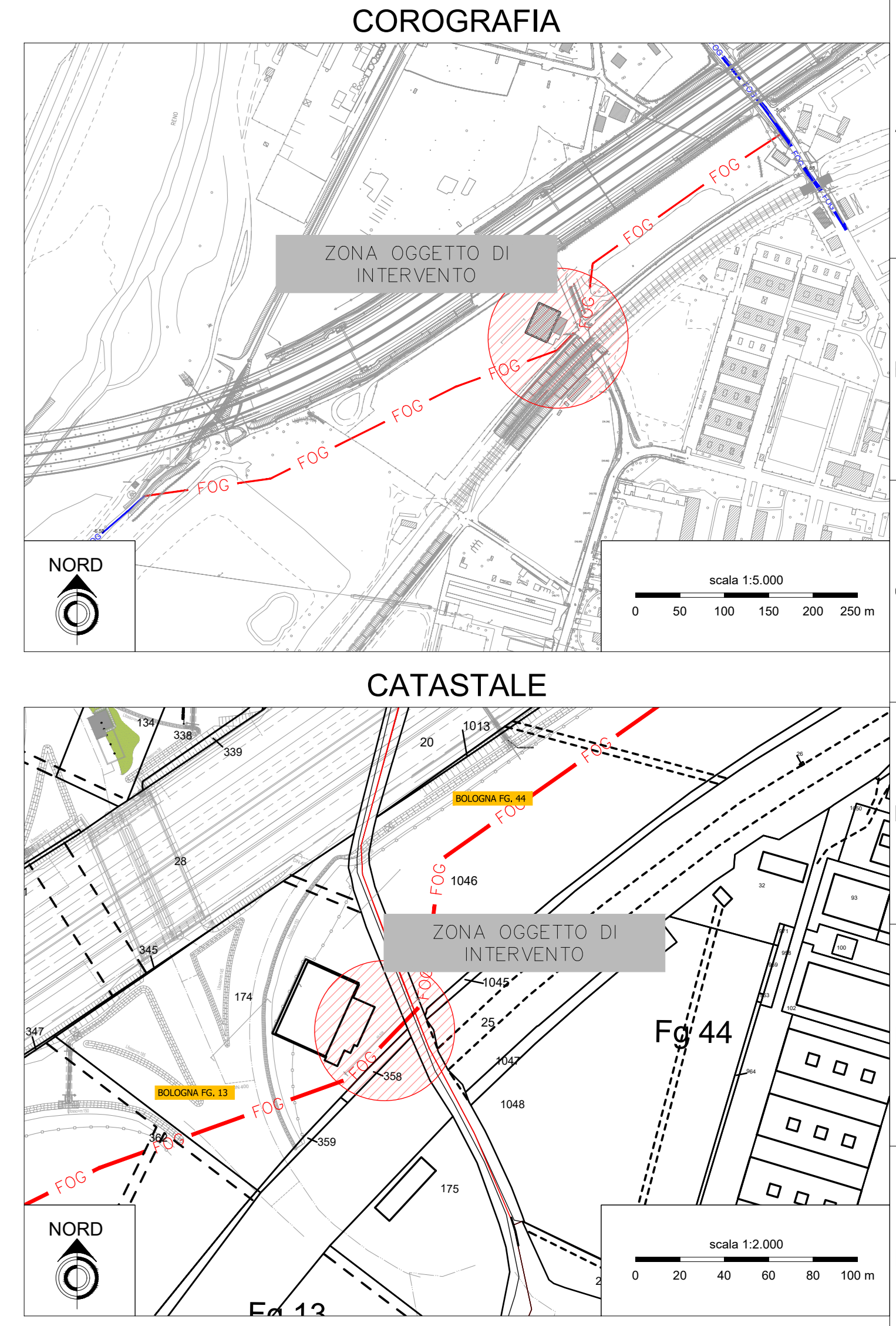
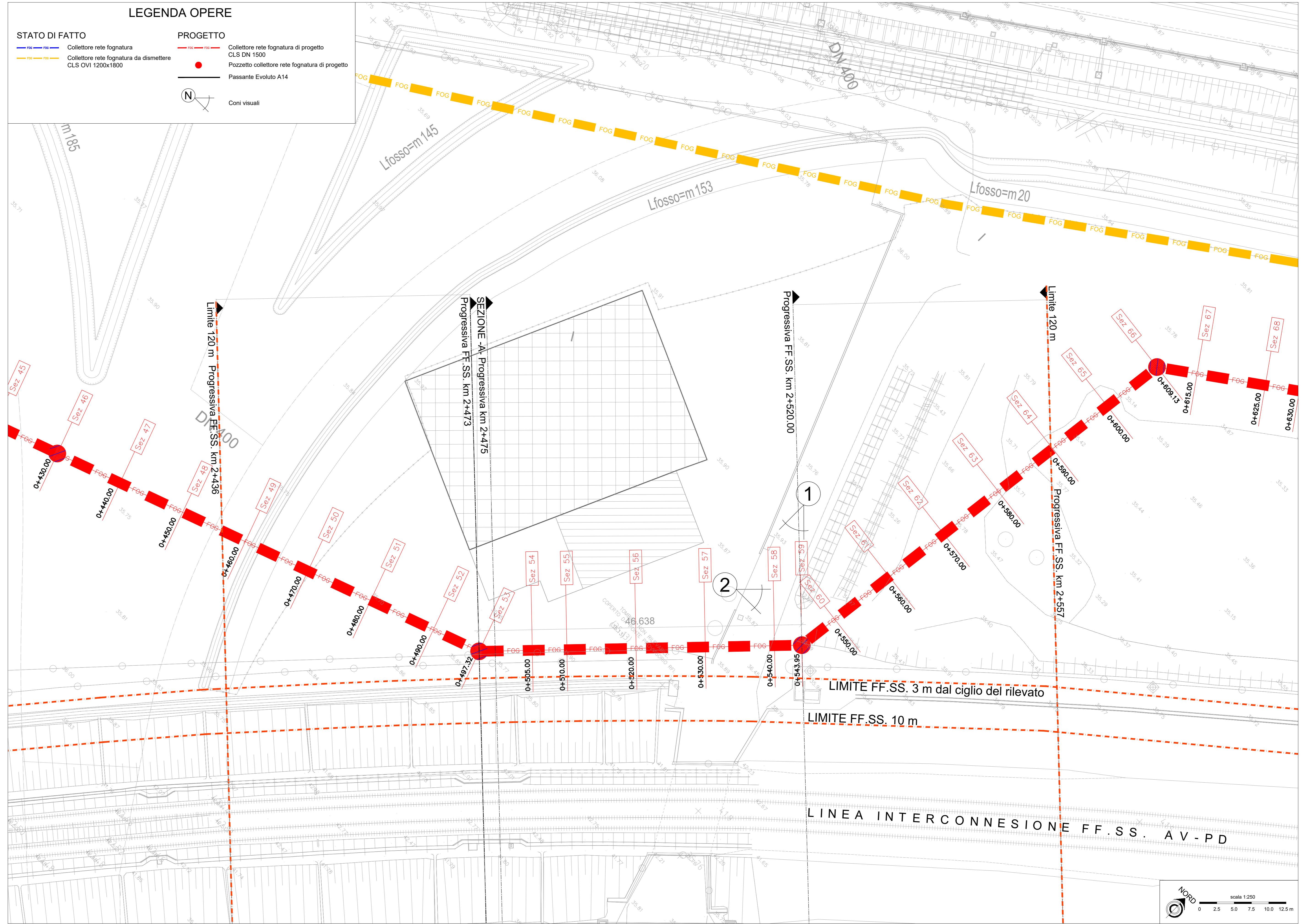
NUMERO SEZIONE	01	02	03	04	05	06	07	08	09	10	11	12	13	14	15
DEFAZZE PROGRESSIVE		0+00	0+20	0+40	0+60	0+80	1+00	1+20	1+40	1+60	1+80	2+00	2+20	2+40	2+60
DEFAZZE PARZIALI		0+00	20	40	60	80	100	120	140	160	180	200	220	240	260
QUOTE TERRENO		25.0	26.0	27.0	28.0	29.0	30.0	31.0	32.0	33.0	34.0	35.0	36.0	37.0	38.0
QUOTE PROGETTO/SCAMBIO		25.0	26.0	27.0	28.0	29.0	30.0	31.0	32.0	33.0	34.0	35.0	36.0	37.0	38.0
QUOTE SCAVO			0.0	0.0	0.0	0.0	0.0	0.0	0.0	0.0	0.0	0.0	0.0	0.0	0.0
ALTEZZA SCAVO			0.0	0.0	0.0	0.0	0.0	0.0	0.0	0.0	0.0	0.0	0.0	0.0	0.0

SEZIONE TRASVERSALE -A- FOG 028-1/2/3 CLS DN 1500 mm
PARALLELLISMO LINEA FF.SS. INTERCONNESSIONE AV-PD
(prog. km 2+436 - km 2+557)



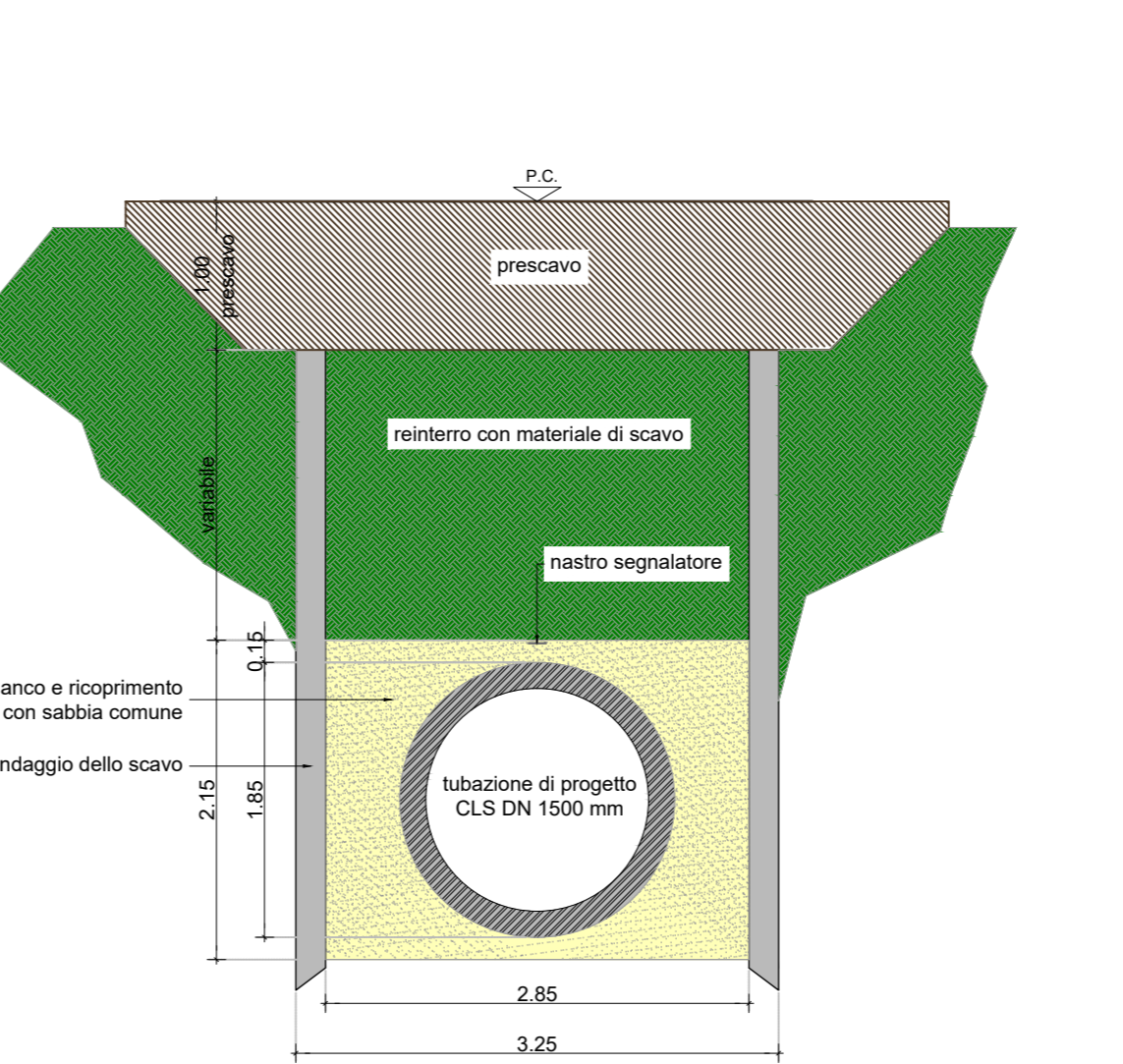
NUMERO SEZIONE	1	2	3	4	5	6	7	8	9	10	11	12	13	14	15
DISTANZE PROGRESSIVE	0+00	0+10	0+20	0+30	0+40	0+50	0+60	0+70	0+80	0+90	1+00	1+10	1+20	1+30	1+40
DISTANZE PARZIALI		10	20	30	40	50	60	70	80	90	100	110	120	130	140
QUOTE TERRENO	25.0	26.0	27.0	28.0	29.0	30.0	31.0	32.0	33.0	34.0	35.0	36.0	37.0	38.0	39.0

PLANIMETRIA FOG 028-1/2/3 CLS DN 1500 mm
PARALLELLISMO LINEA FF.SS. INTERCONNESSIONE AV-PD
(prog. km 2+480 - km 2+520)

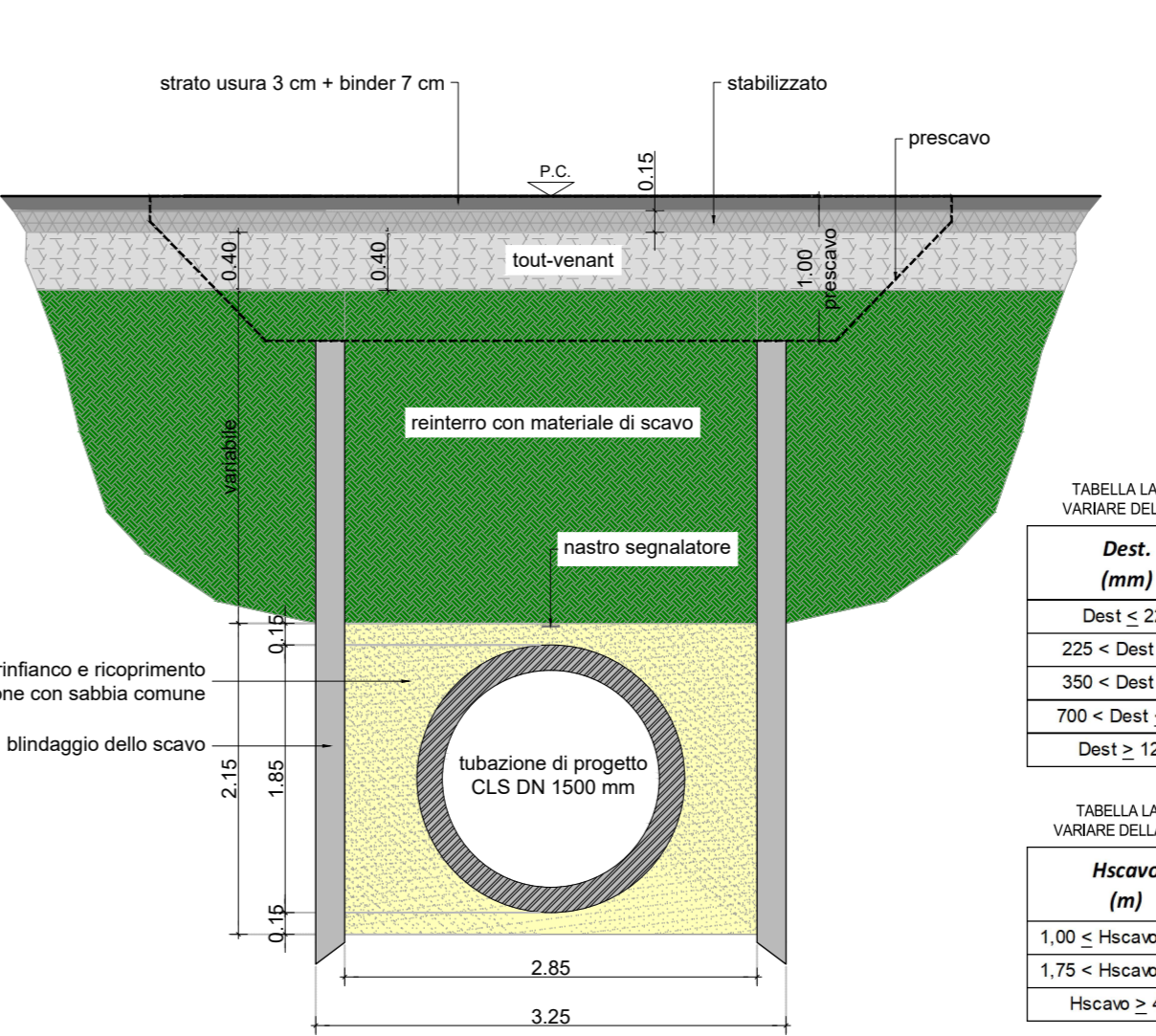


SEZIONI TIPO DI SCAVO

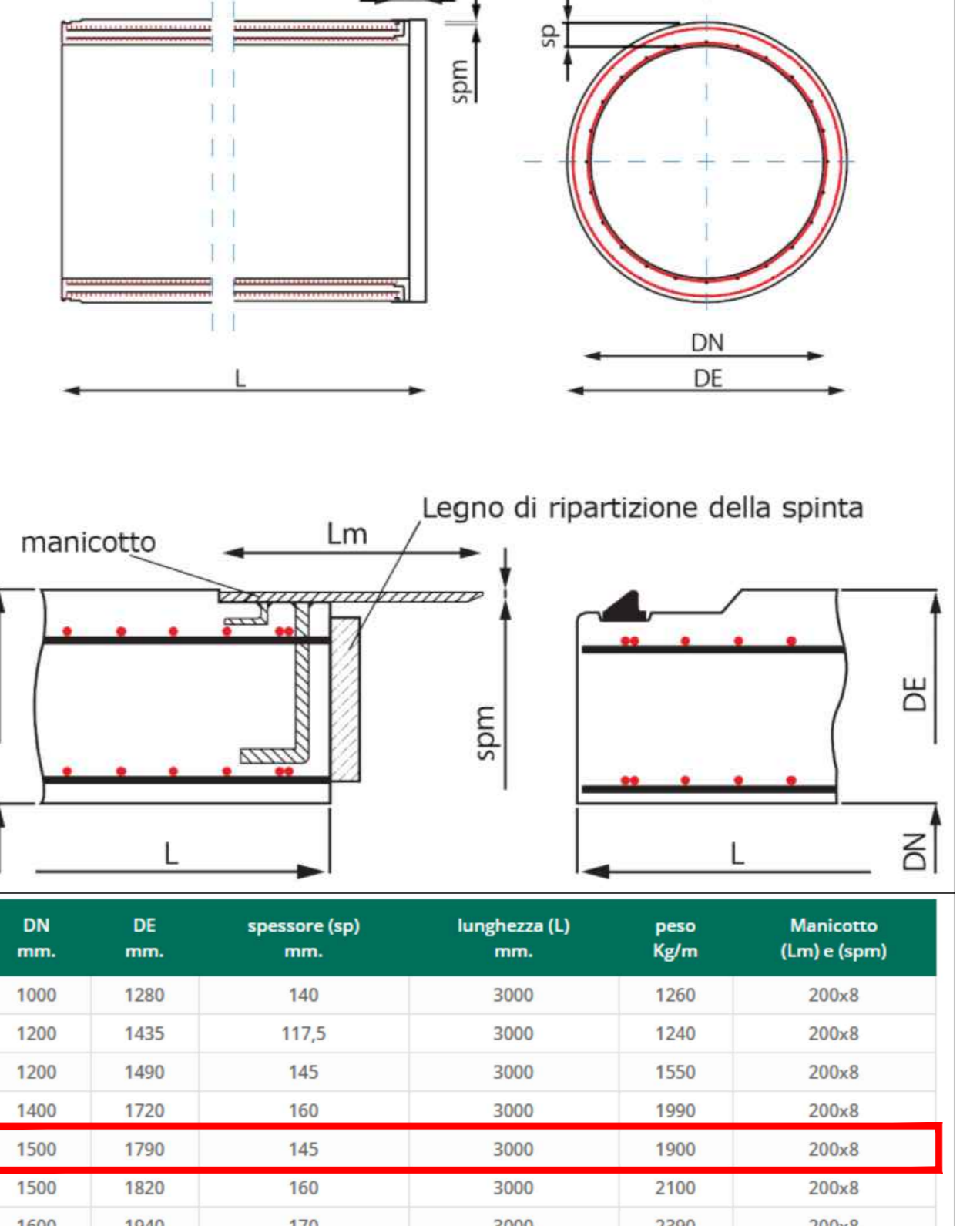
TIPOLOGIA A
TERRENO DI CAMPAGNA



TIPOLOGIA B
STRADA PAVIMENTATA



PARTICOLARE TUBAZIONE CLS DN 1500



Logo and information for the project. It includes the logo of the engineering firm (MEPATECH), the name of the project (PARALLELLISMO LINEA FF.SS. INTERCONNESSIONE AV-PD), the scale (SCALA: 1:2000), and other technical details. It also includes a table of revision and a list of stakeholders.

REVISIONI	DATA	REDAZIONE	CONTROLLI	APPROVAZIONE	REVISIONE
1	02/2021	MMR	MCJ	DPH	PROGETTO DEFINITIVO