

COMMITTENTE



PROGETTAZIONE:



DIREZIONE TECNICA
U.O. ARCHITETTURA, AMBIENTE E TERRITORIO
S. O. AMBIENTE

PROGETTO DEFINITIVO

DIRETTRICE FERROVIARIA MESSINA - CATANIA - PALERMO
NUOVO COLLEGAMENTO PALERMO - CATANIA
TRATTA NUOVA ENNA - DITTAINO (LOTTO 4B)

Ministero della Transizione Ecologica. Richiesta di integrazioni n.3240
del 23/06/2021 Commissione Tecnica VIA/VAS - Risposta alla Richiesta di
Integrazione n.15.4

SCALA:

-

COMMESSA LOTTO FASE ENTE TIPO DOC. OPERA/DISCIPLINA PROGR. REV.

RS3V 40 D 22 RH IF0000 002 A

Rev.	Descrizione	Redatto	Data	Verificato	Data	Approvato	Data	Autorizzato Data
A	EMISSIONE ESECUTIVA	F. Massari	Luglio 2021	F. Sparacino	Luglio 2021	F. Sparacino	Luglio 2021	ITALFERR S.p.A. Dott.ssa Claudia Ersolani Ordine Agrotecnico Agronomo di Roma, Rieti e Viterbo 0045

File: RS3V40D22RHIF0000002A

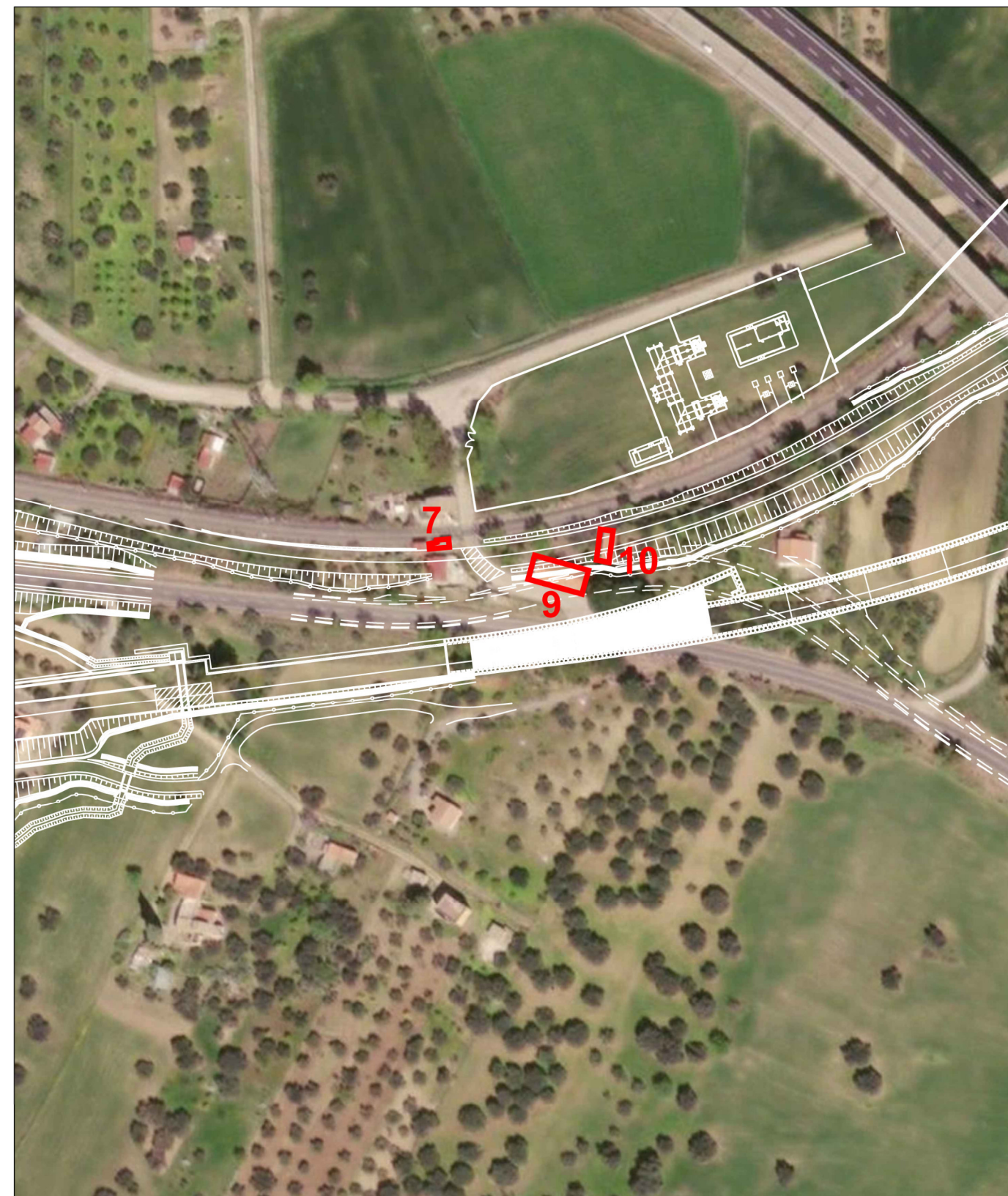
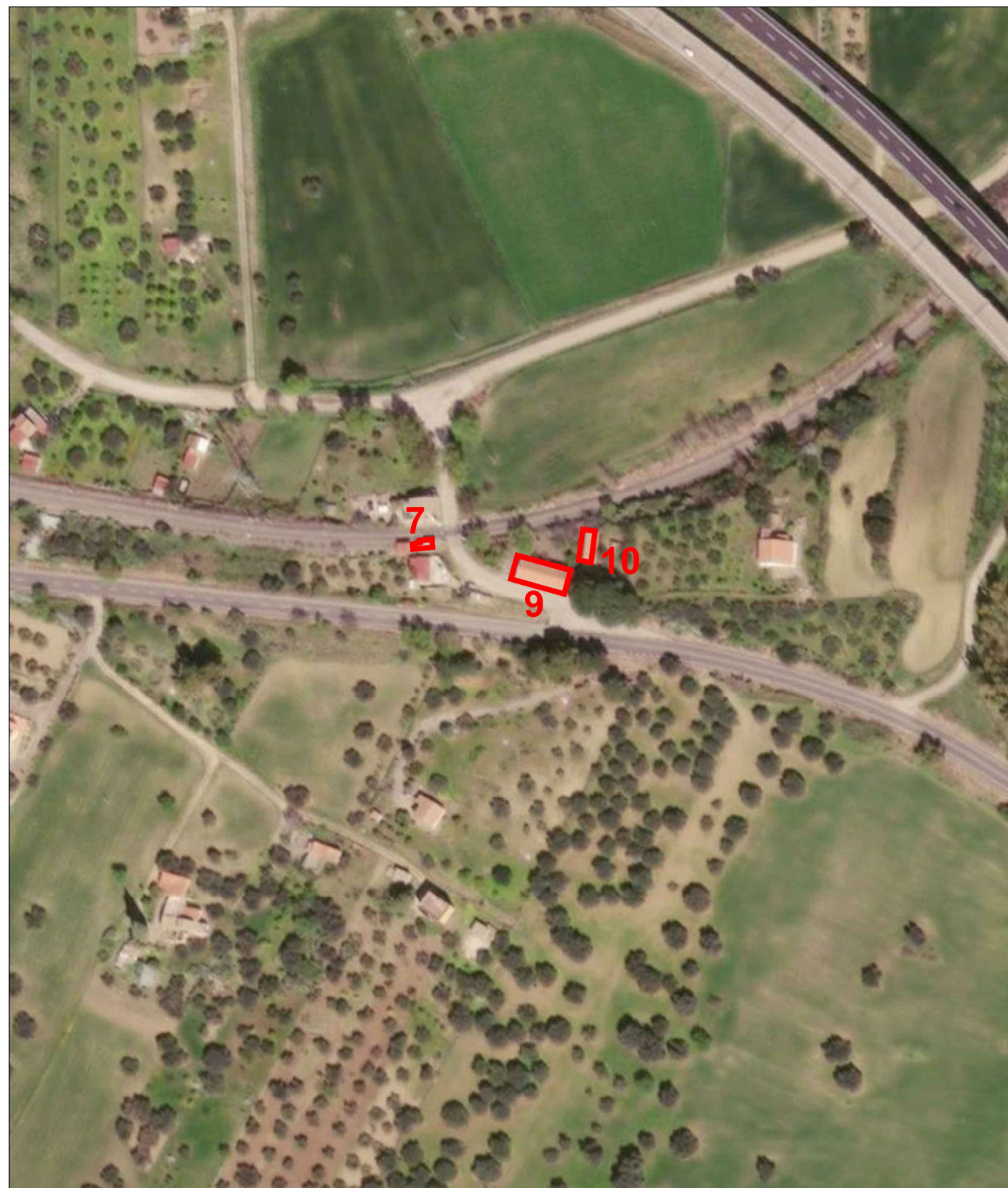
n. Elab.:

COMMESSA	LOTTO	CODIFICA	DOCUMENTO	REV.	FOGLIO
RS3V	40	D22RH	IM0002002	A	2 di 13

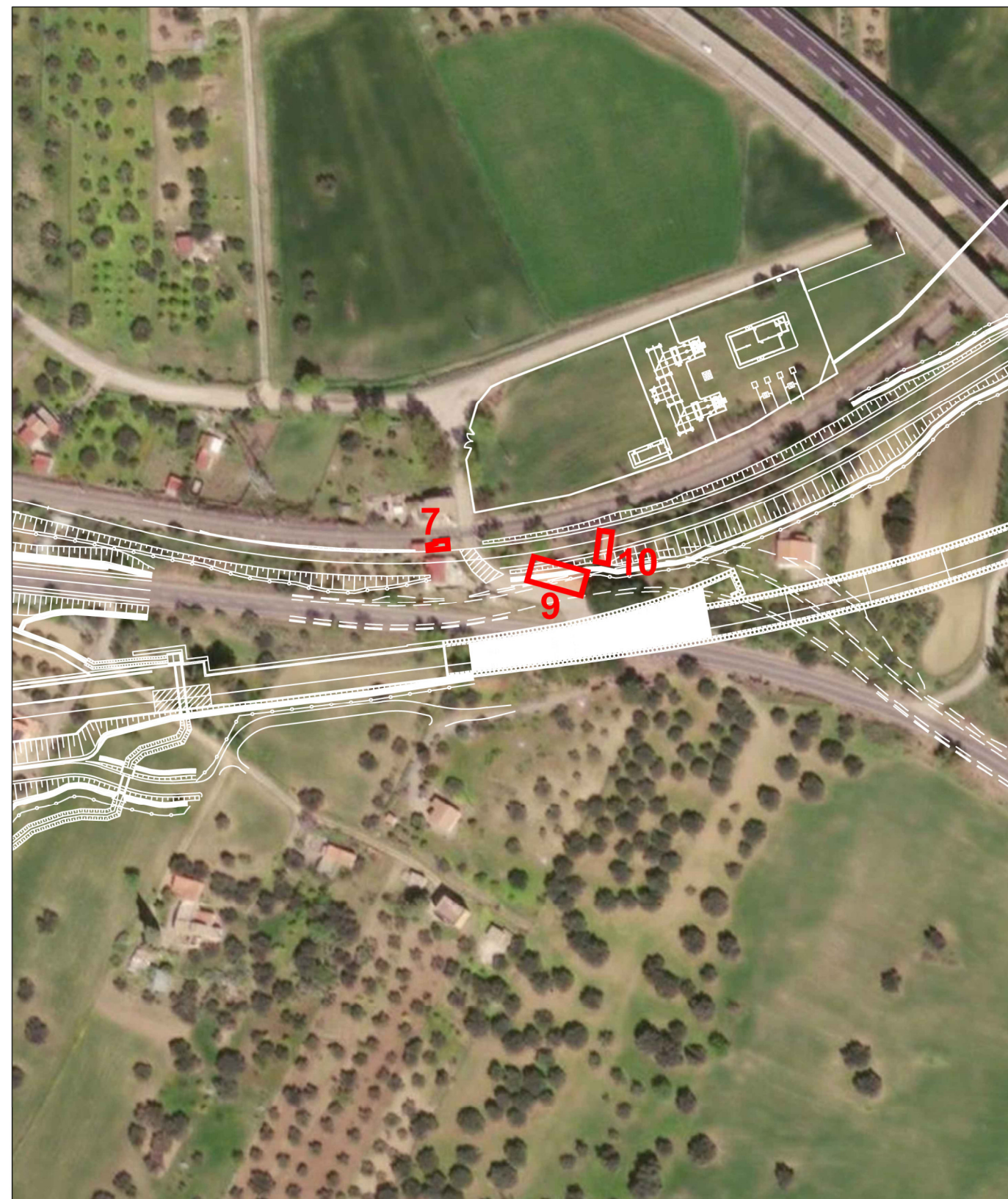
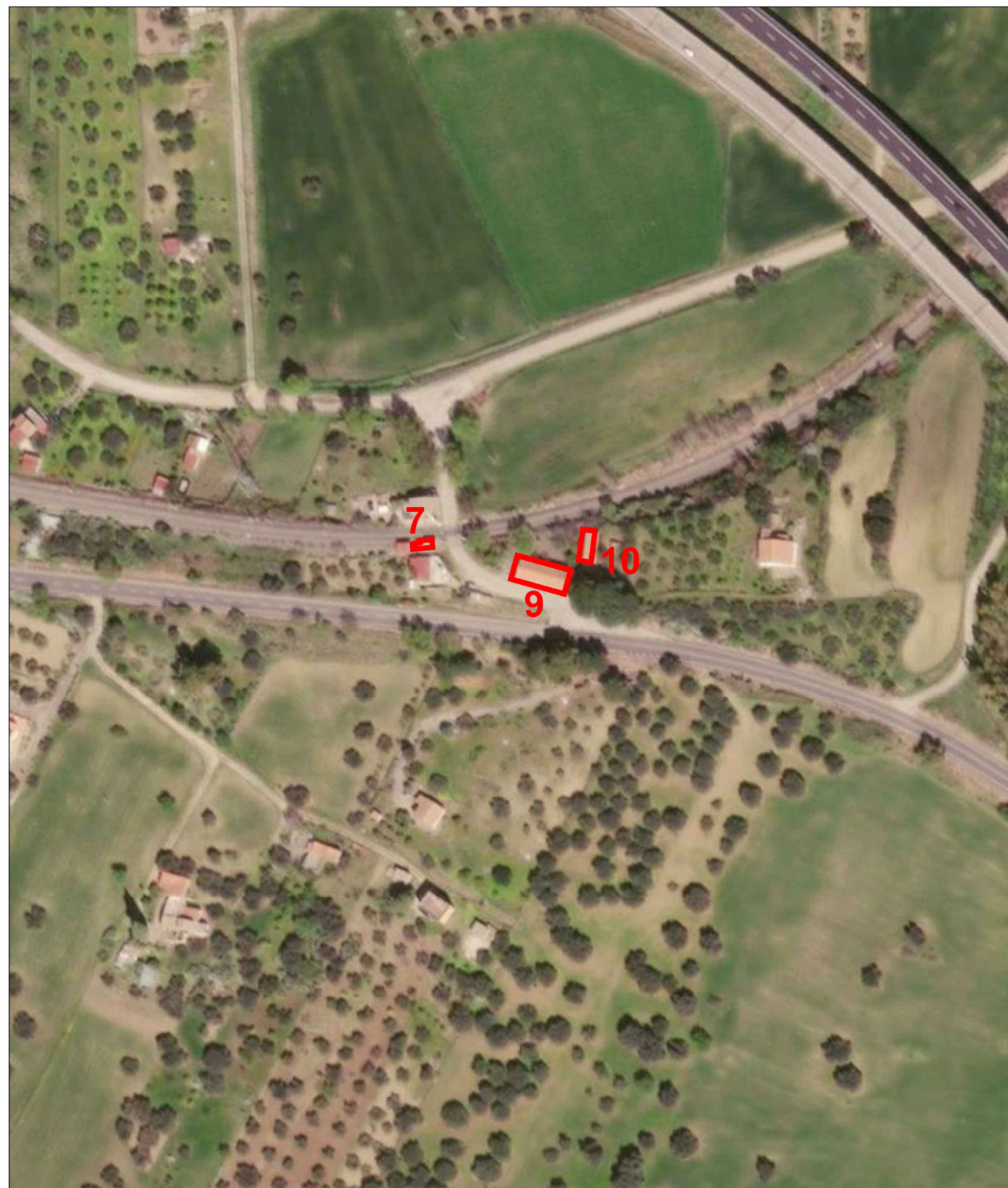
Prefabbricato

Pk 0+975

7



COMMESSA	LOTTO	CODIFICA	DOCUMENTO	REV.	FOGLIO
RS3V	40	D22RH	IF0000002	A	3 di 13

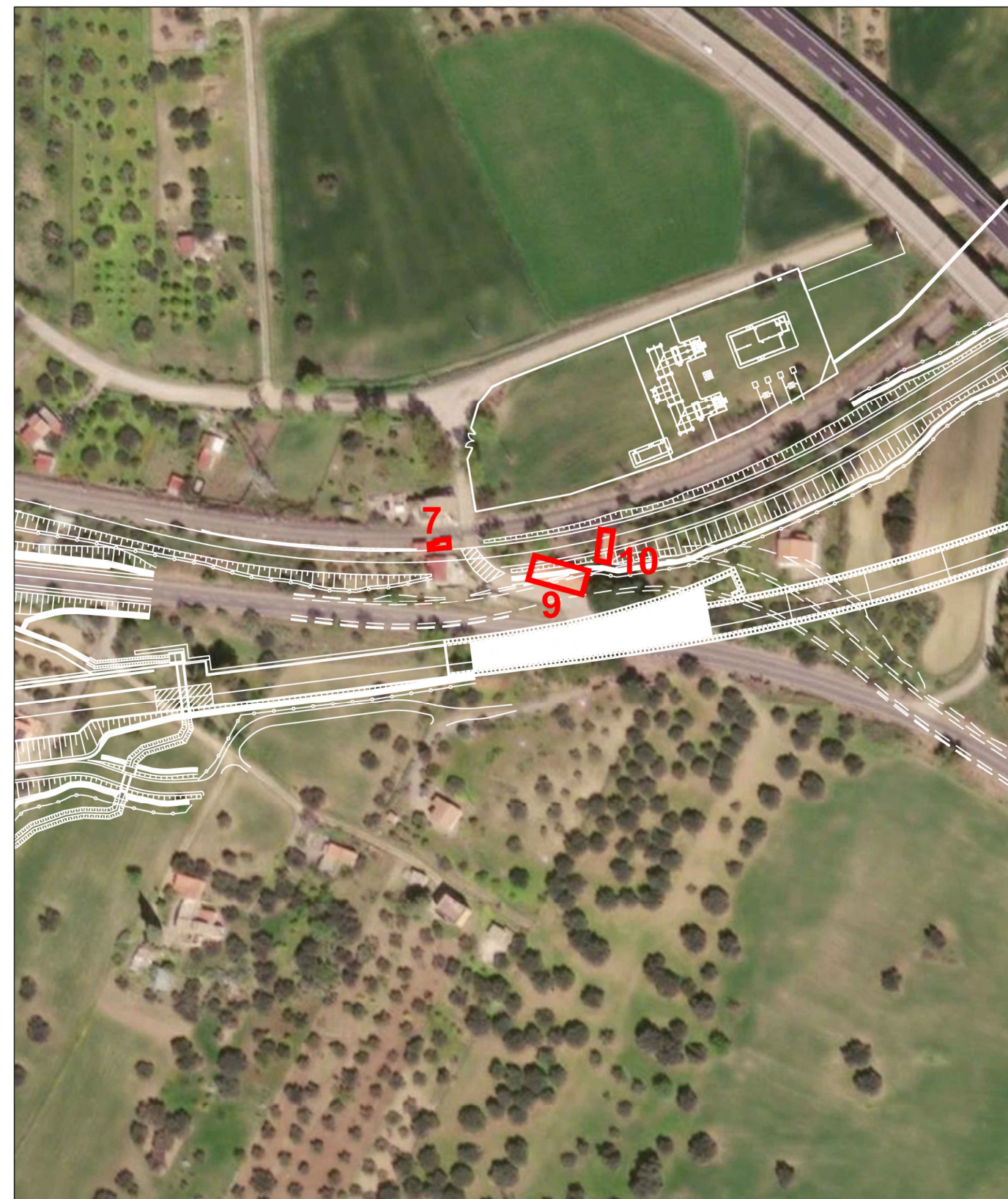


COMMESSA	LOTTO	CODIFICA	DOCUMENTO	REV.	FOGLIO
RS3V	40	D22RH	IF000002	A	4 di 13

Edificio

Pk 1+040

10

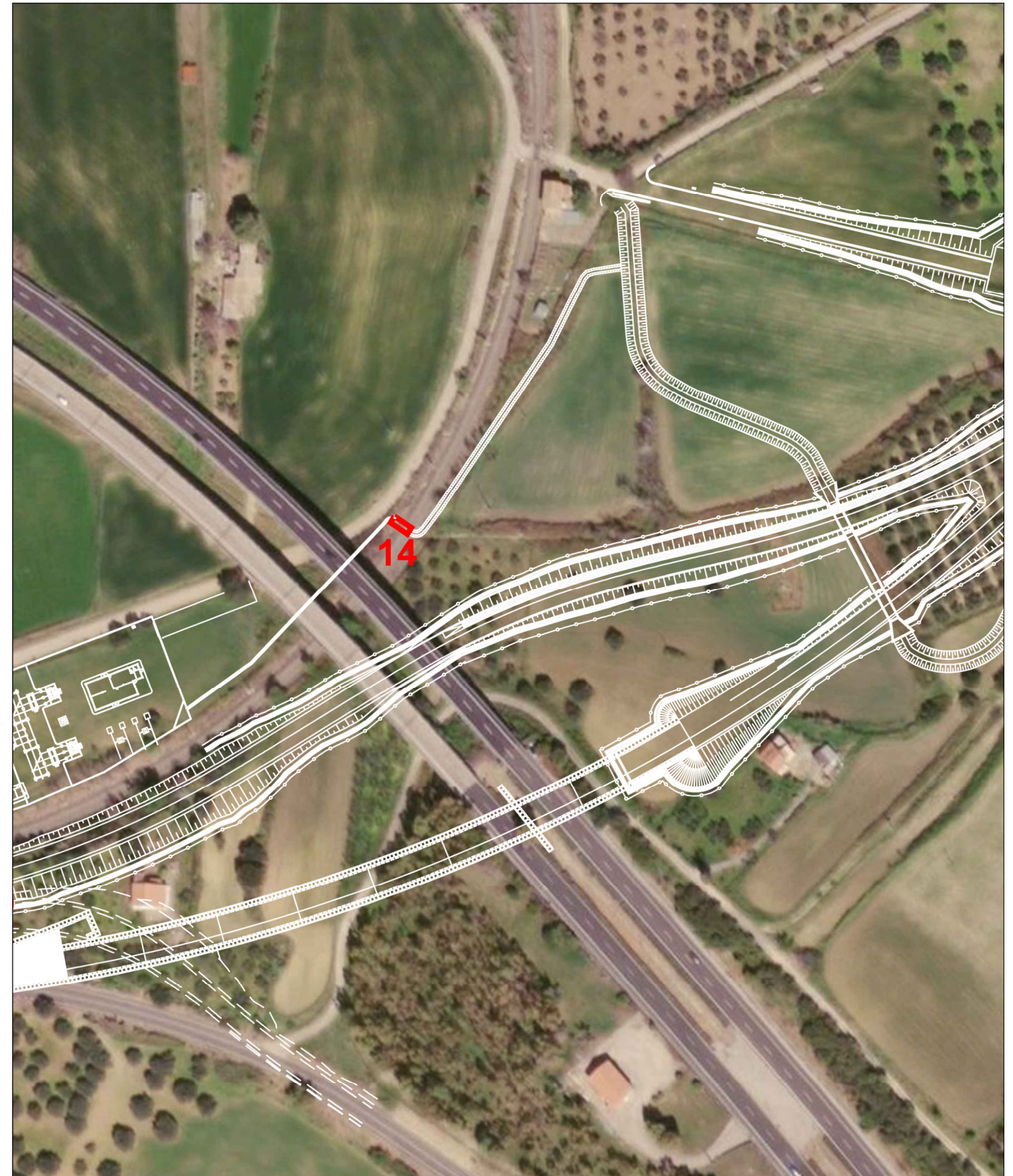
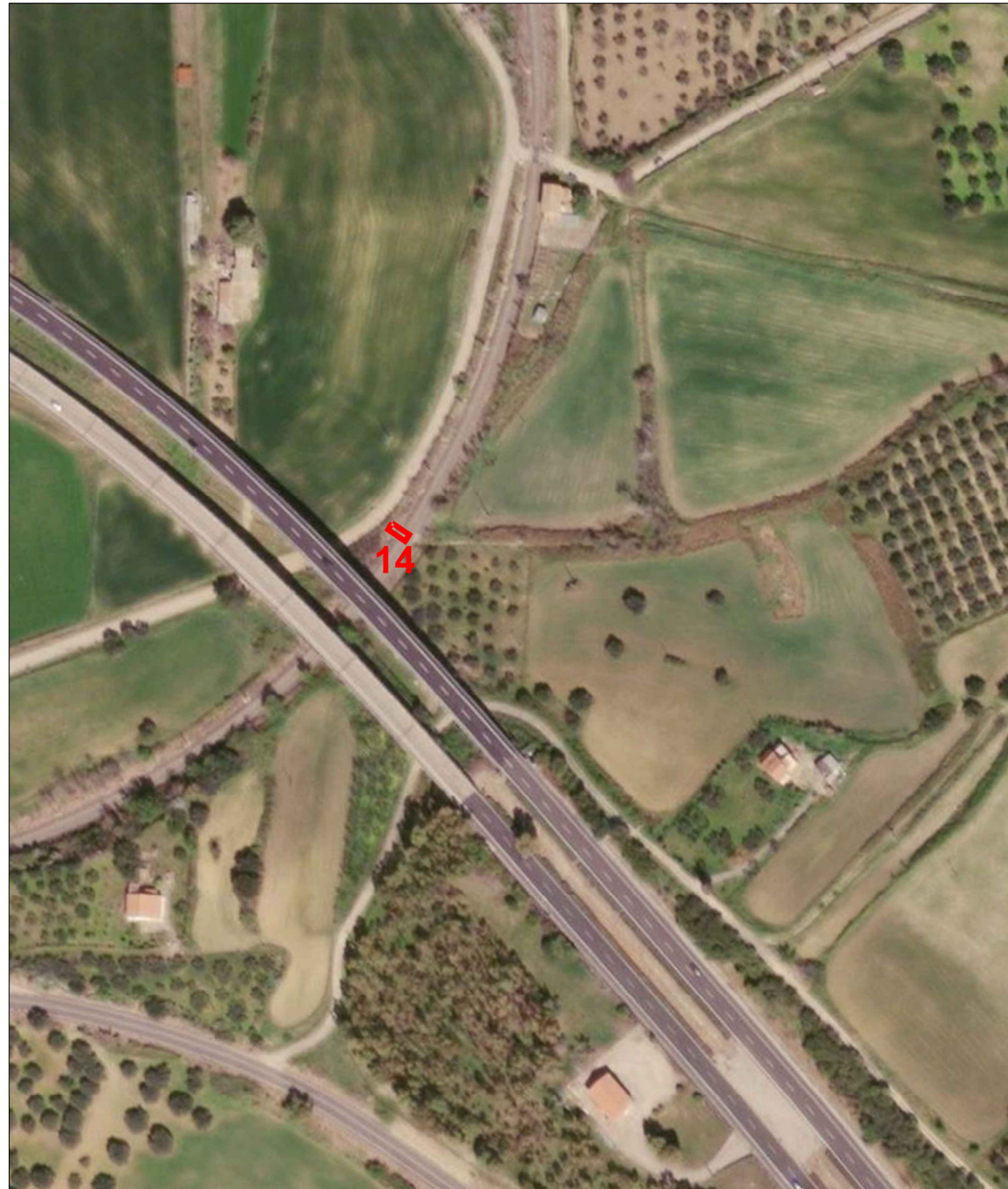


COMMESSA	LOTTO	CODIFICA	DOCUMENTO	REV.	FOGLIO
RS3V	40	D22RH	IF000002	A	5 di 13

Tombino idraulico

Pk 1+260

14

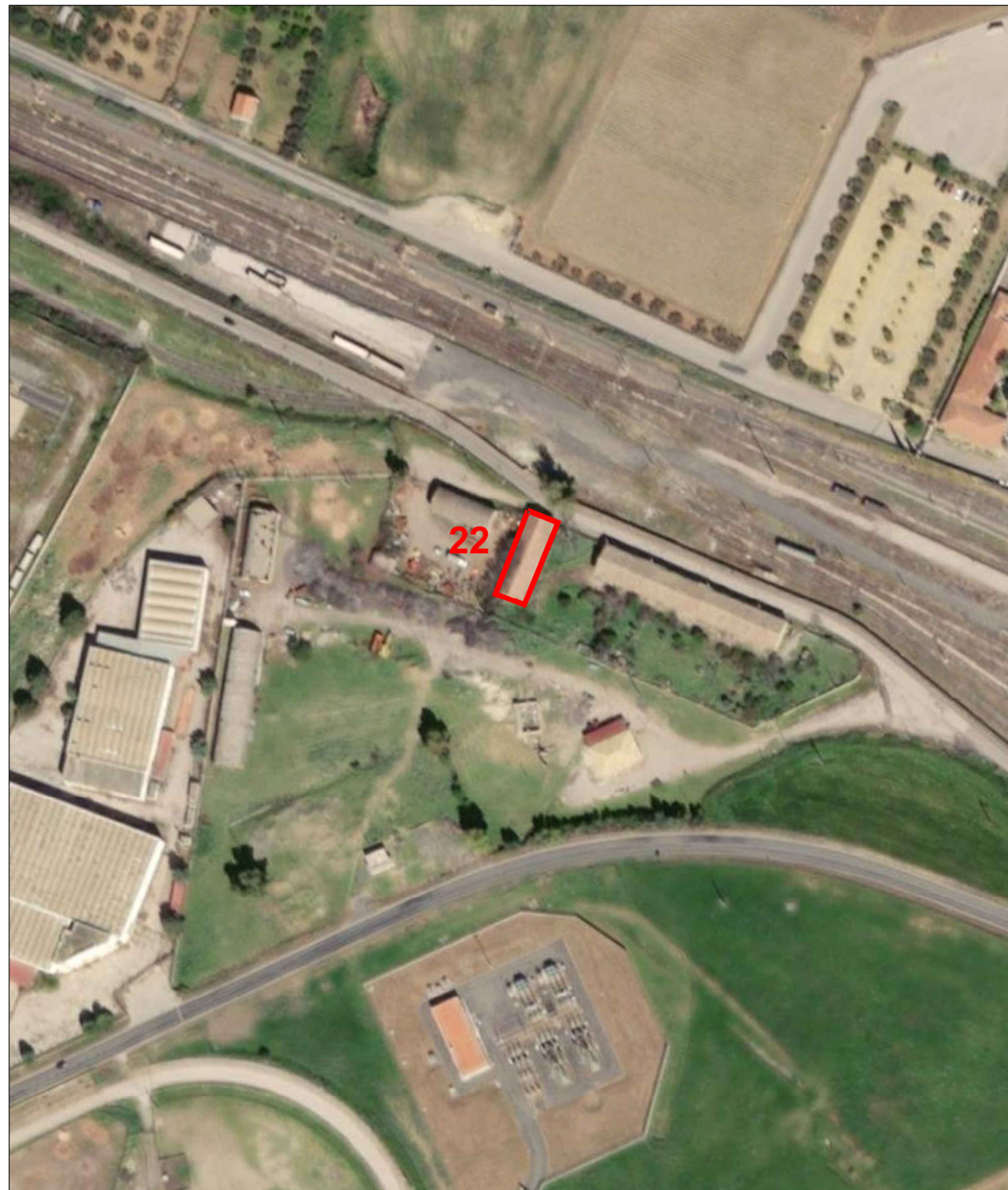


COMMESSA	LOTTO	CODIFICA	DOCUMENTO	REV.	FOGLIO
RS3V	40	D22RH	IF000002	A	6 di 13

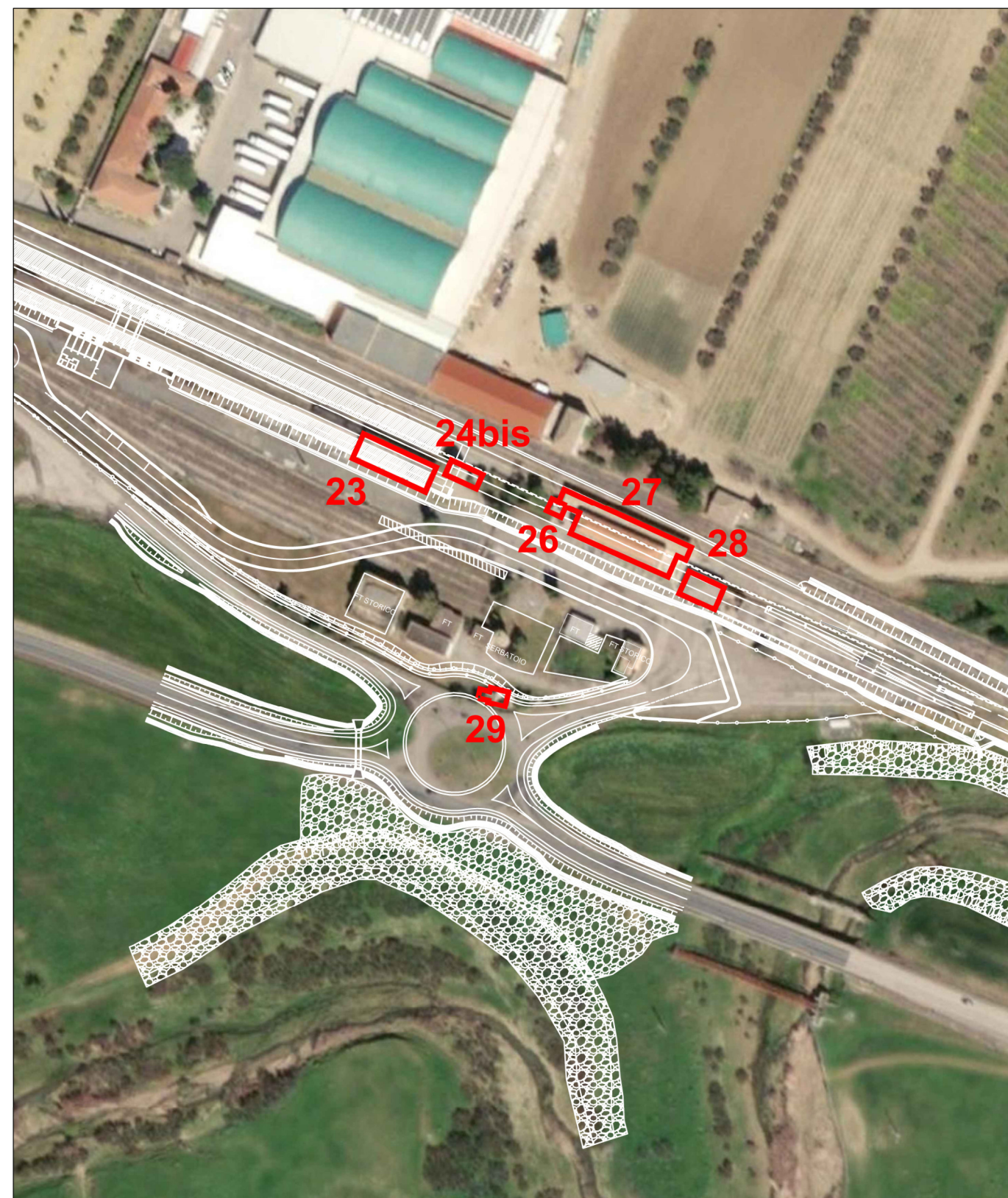
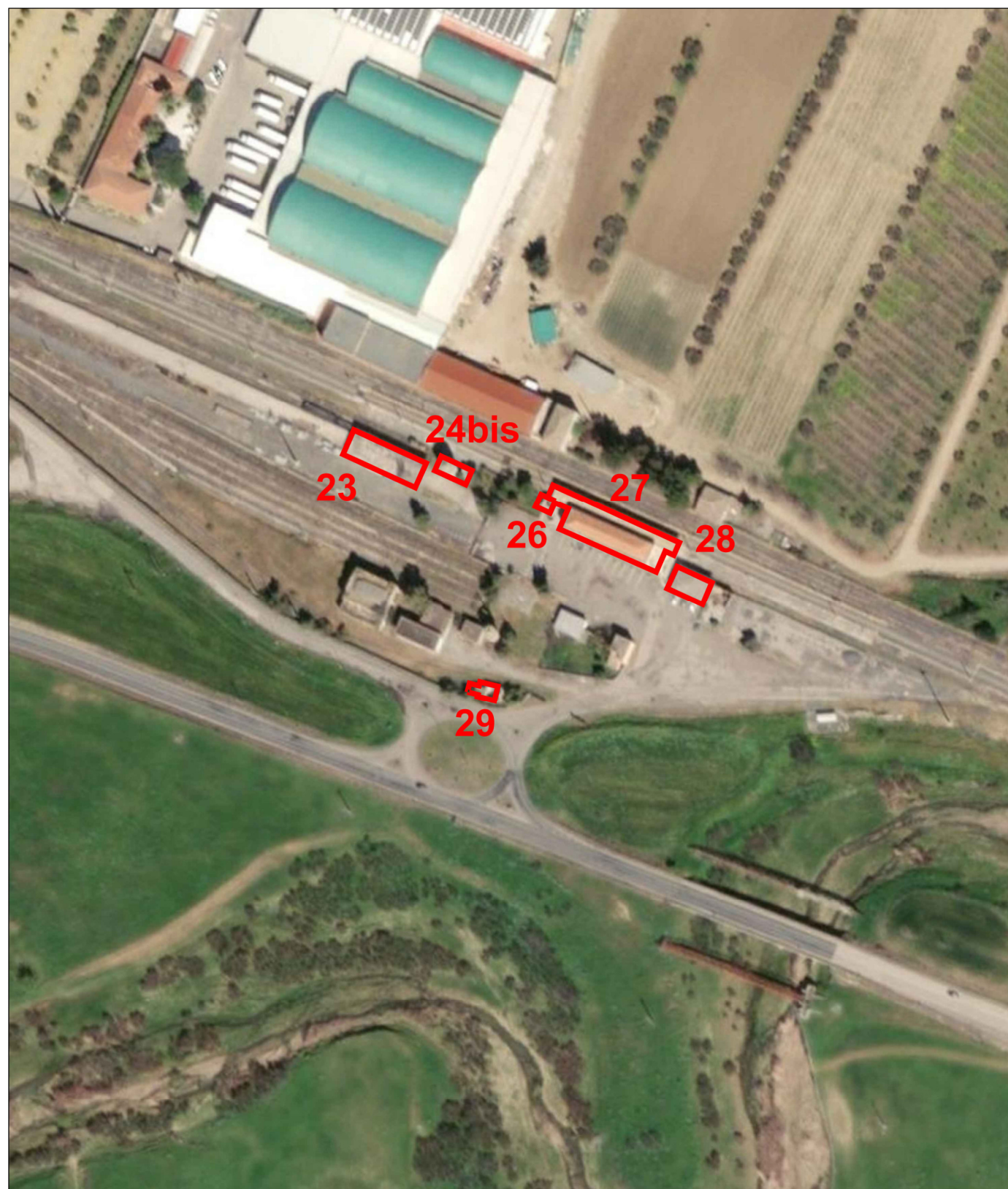
Edificio

Pk 1+080

22



COMMESSA	LOTTO	CODIFICA	DOCUMENTO	REV.	FOGLIO
RS3V	40	D22RH	IF0000002	A	7 di 13

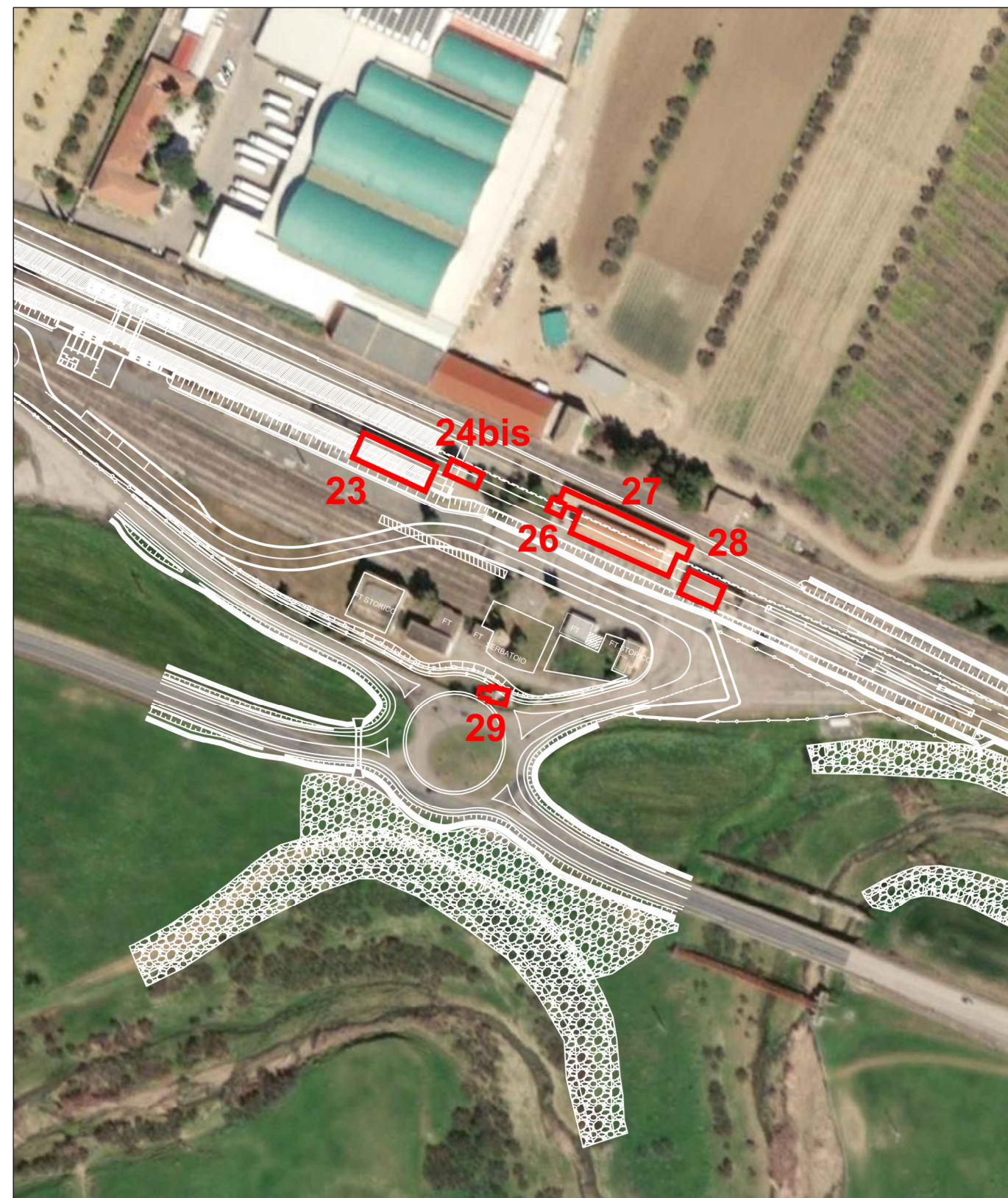
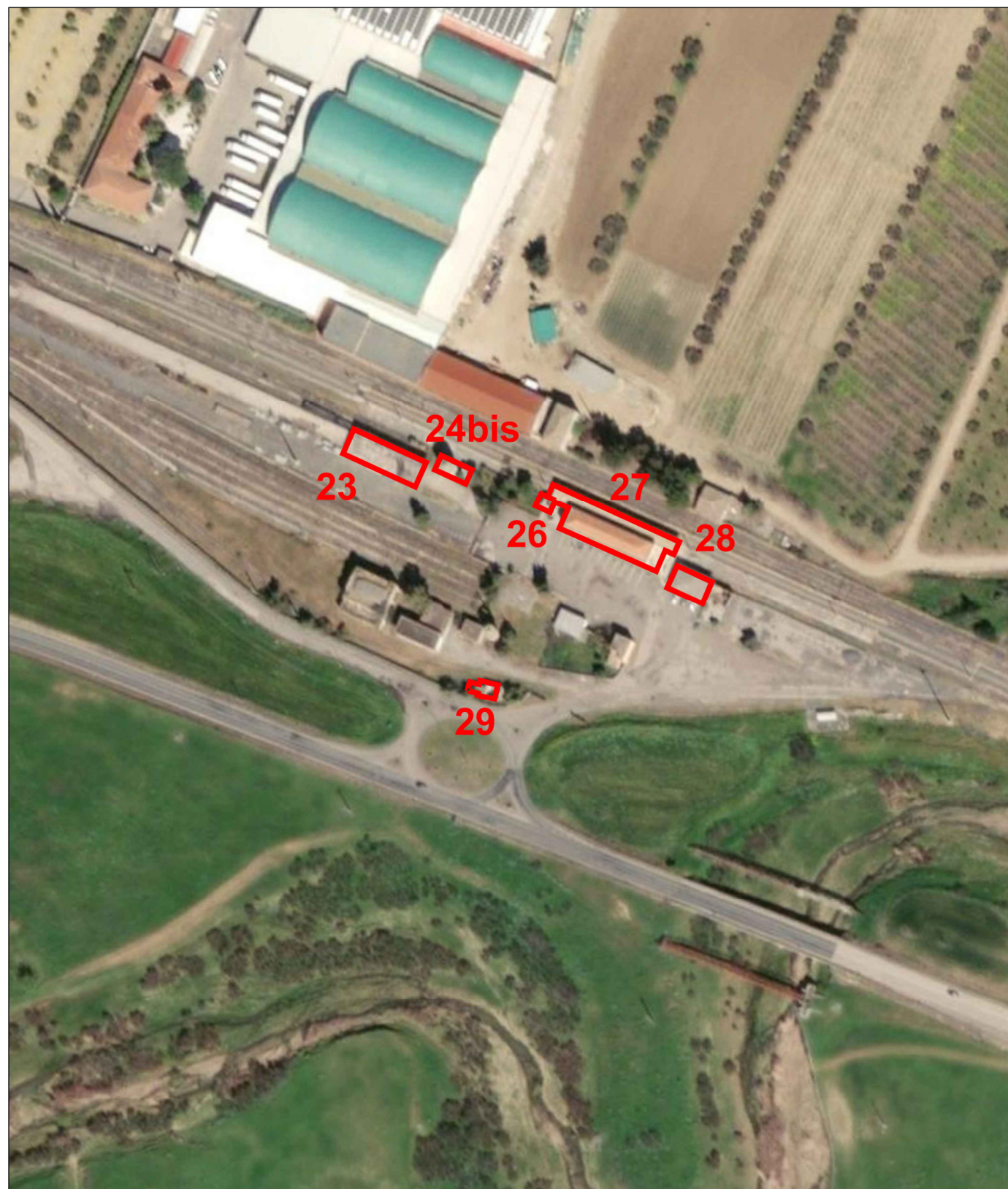


COMMESSA	LOTTO	CODIFICA	DOCUMENTO	REV.	FOGLIO
RS3V	40	D22RH	IF000002	A	8 di 13

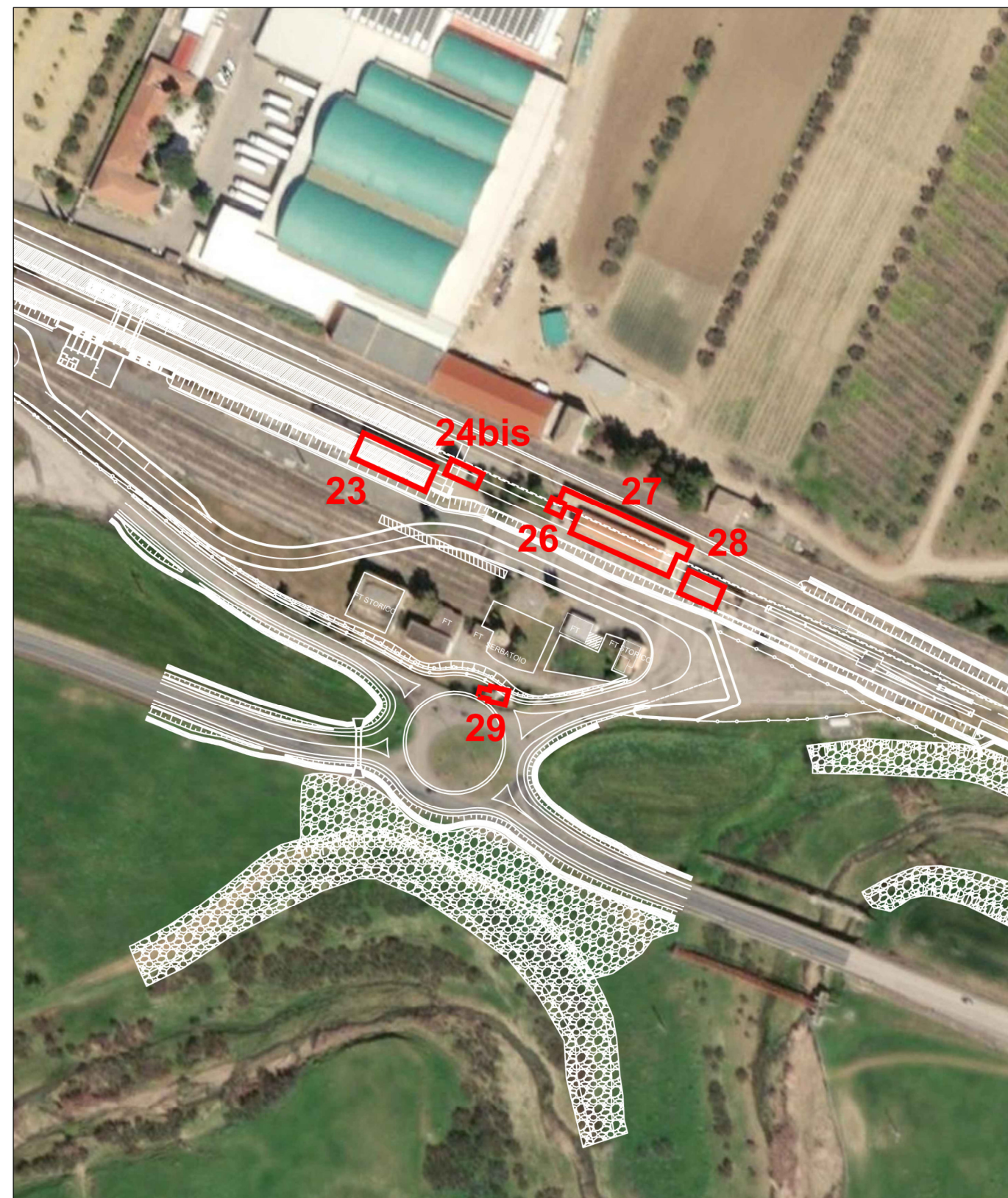
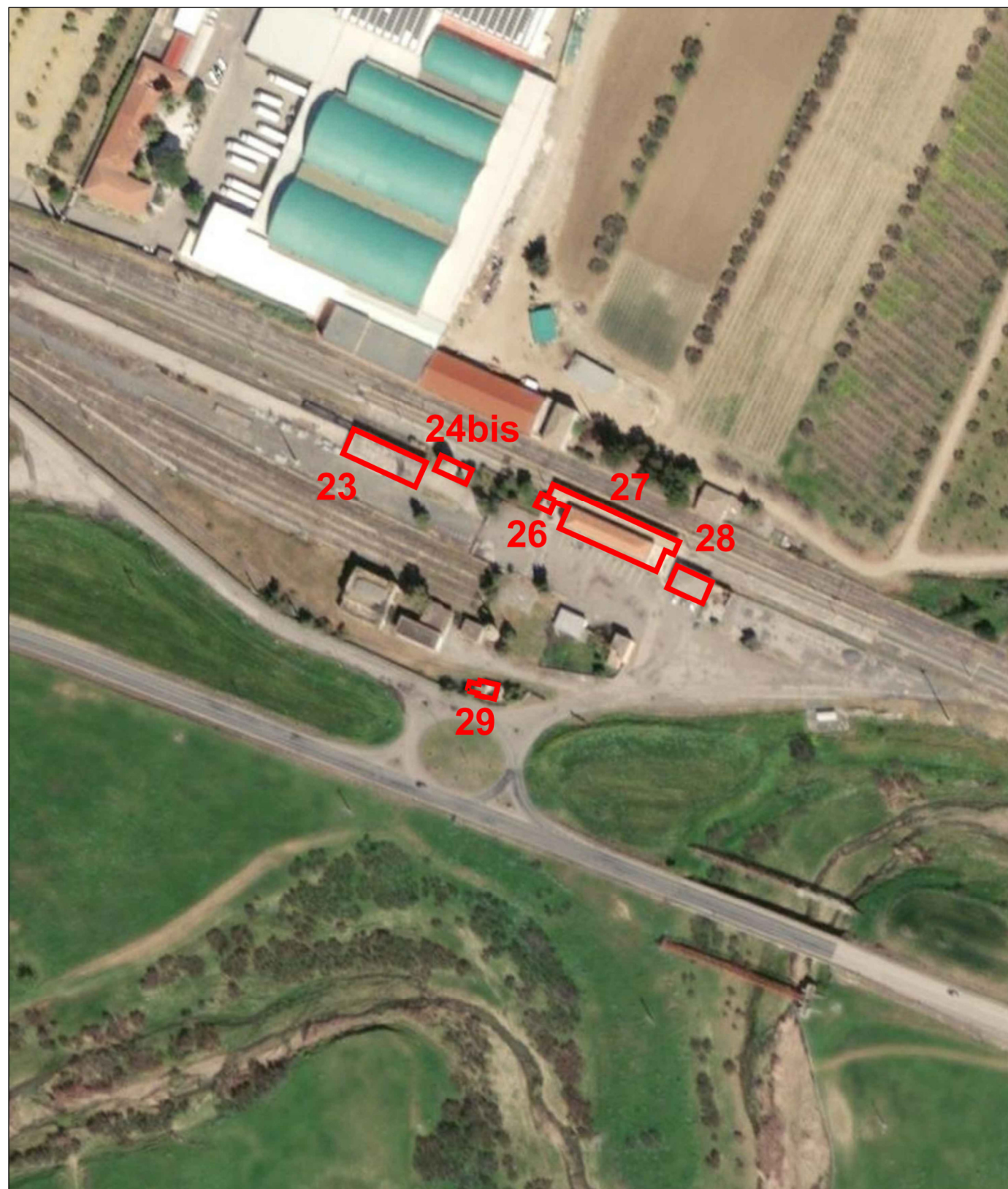
Serbatoio

Pk 14+350

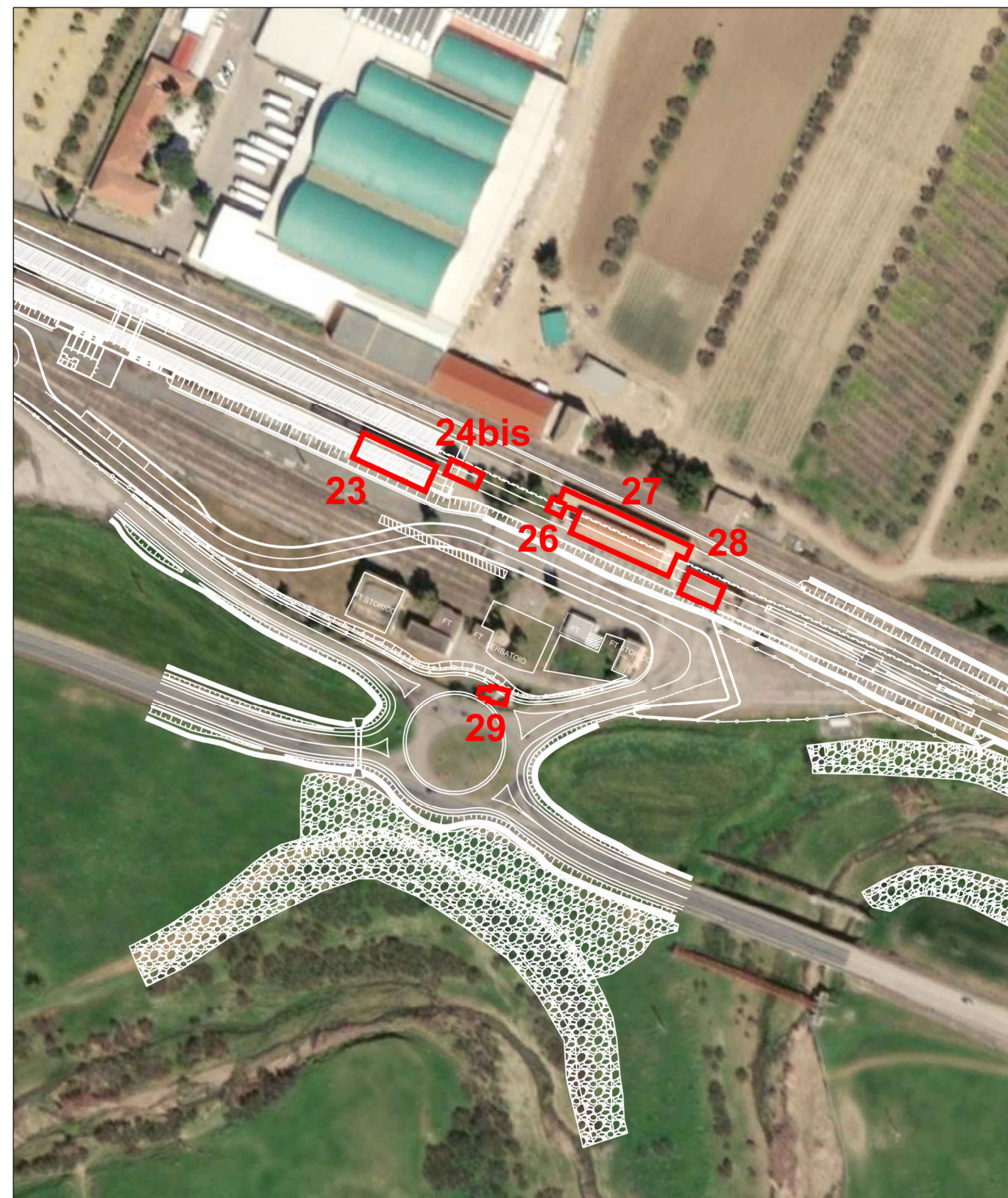
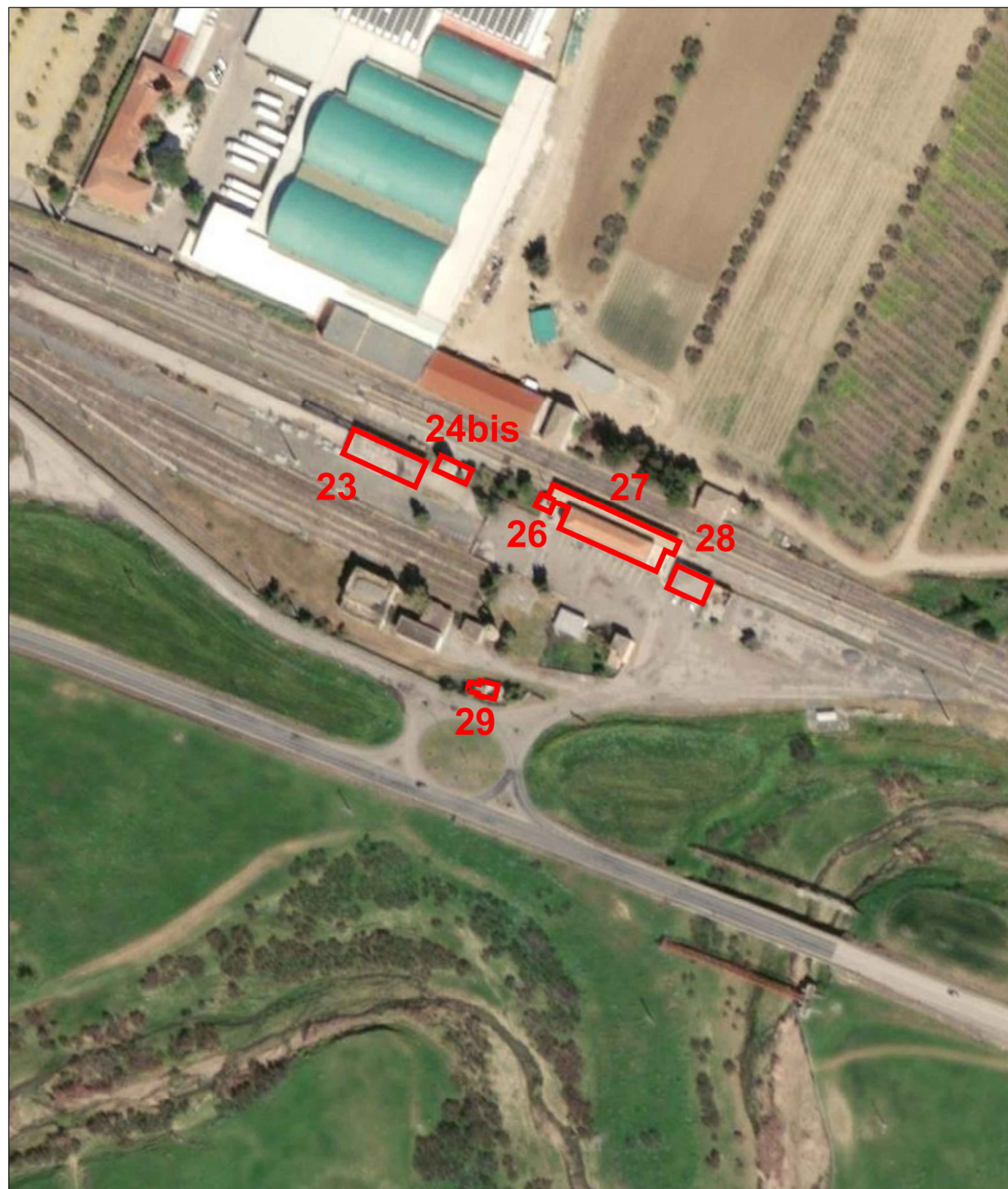
24 bis



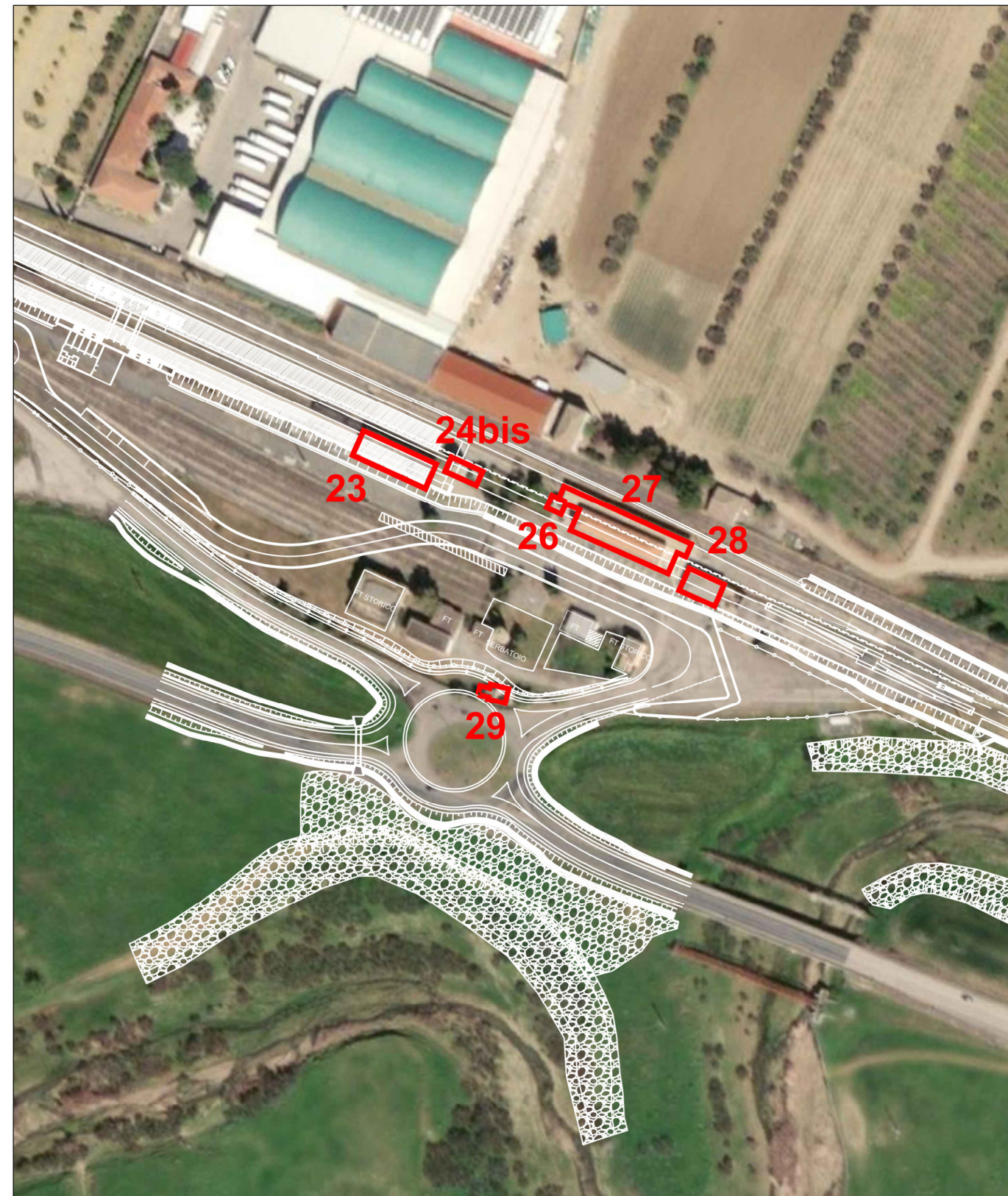
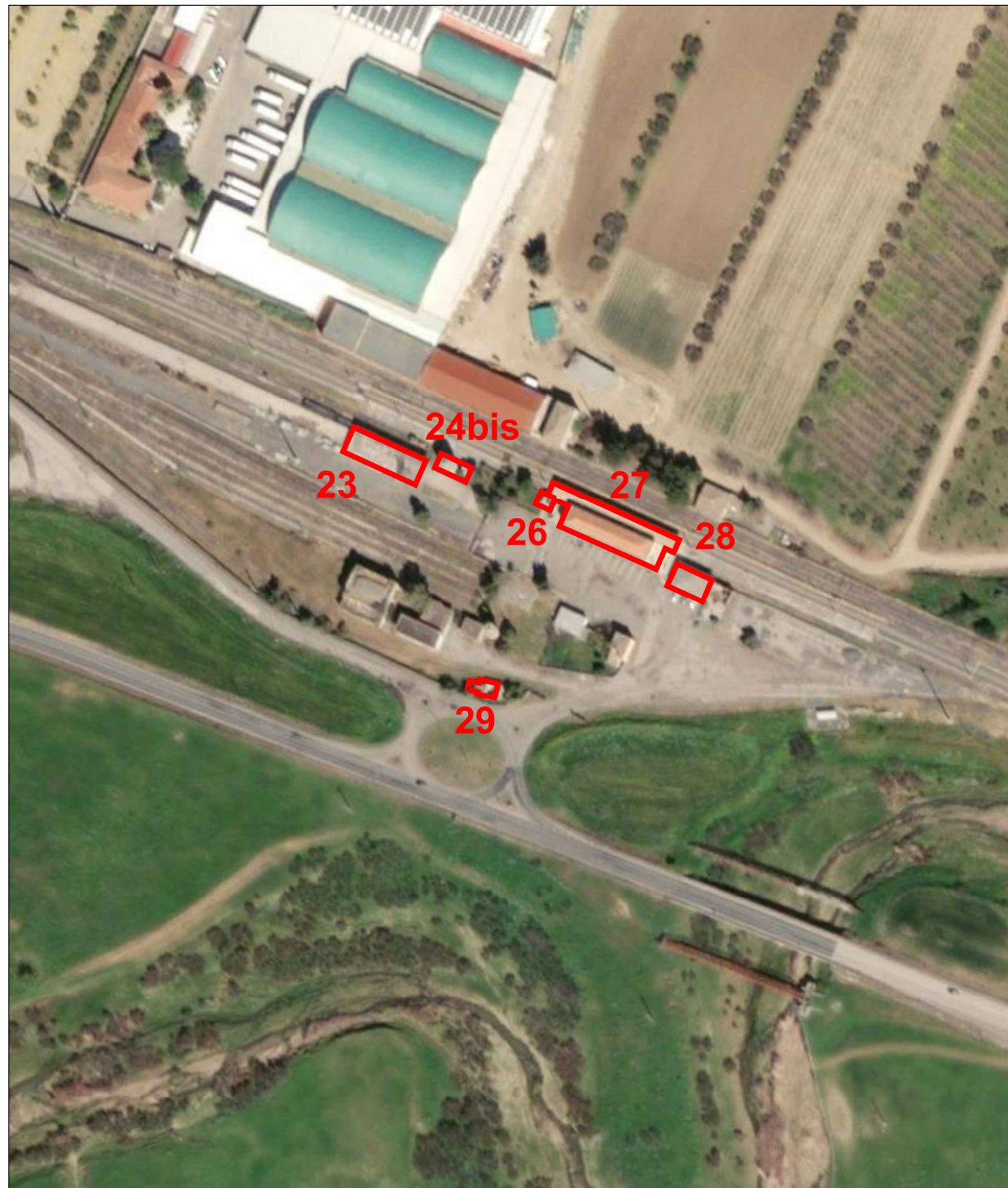
COMMESSA	LOTTO	CODIFICA	DOCUMENTO	REV.	FOGLIO
RS3V	40	D22RH	IF000002	A	9 di 13



COMMESSA	LOTTO	CODIFICA	DOCUMENTO	REV.	FOGLIO
RS3V	40	D22RH	IF000002	A	10 di 13



COMMESSA	LOTTO	CODIFICA	DOCUMENTO	REV.	FOGLIO
RS3V	40	D22RH	IF000002	A	11 di 13

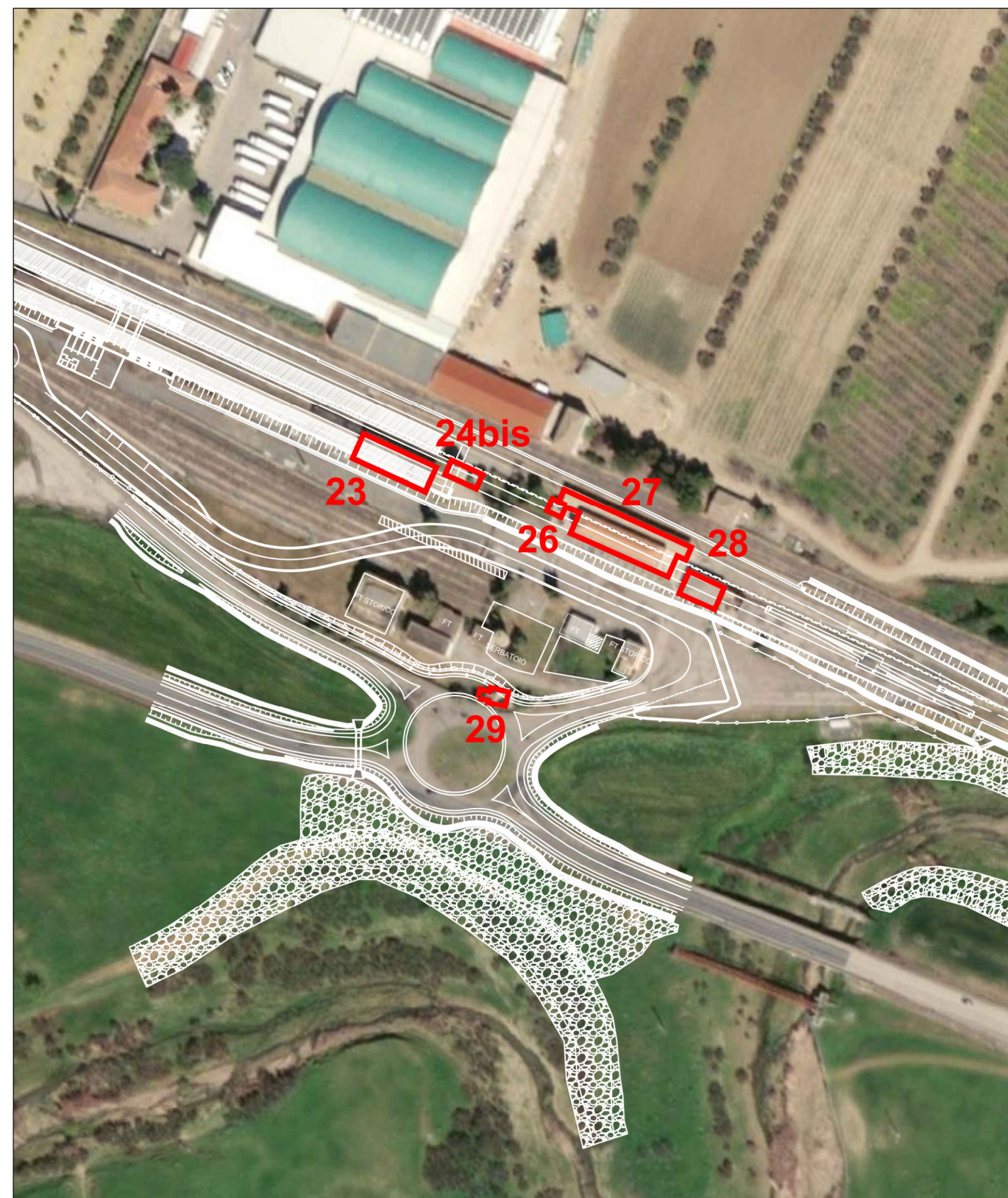
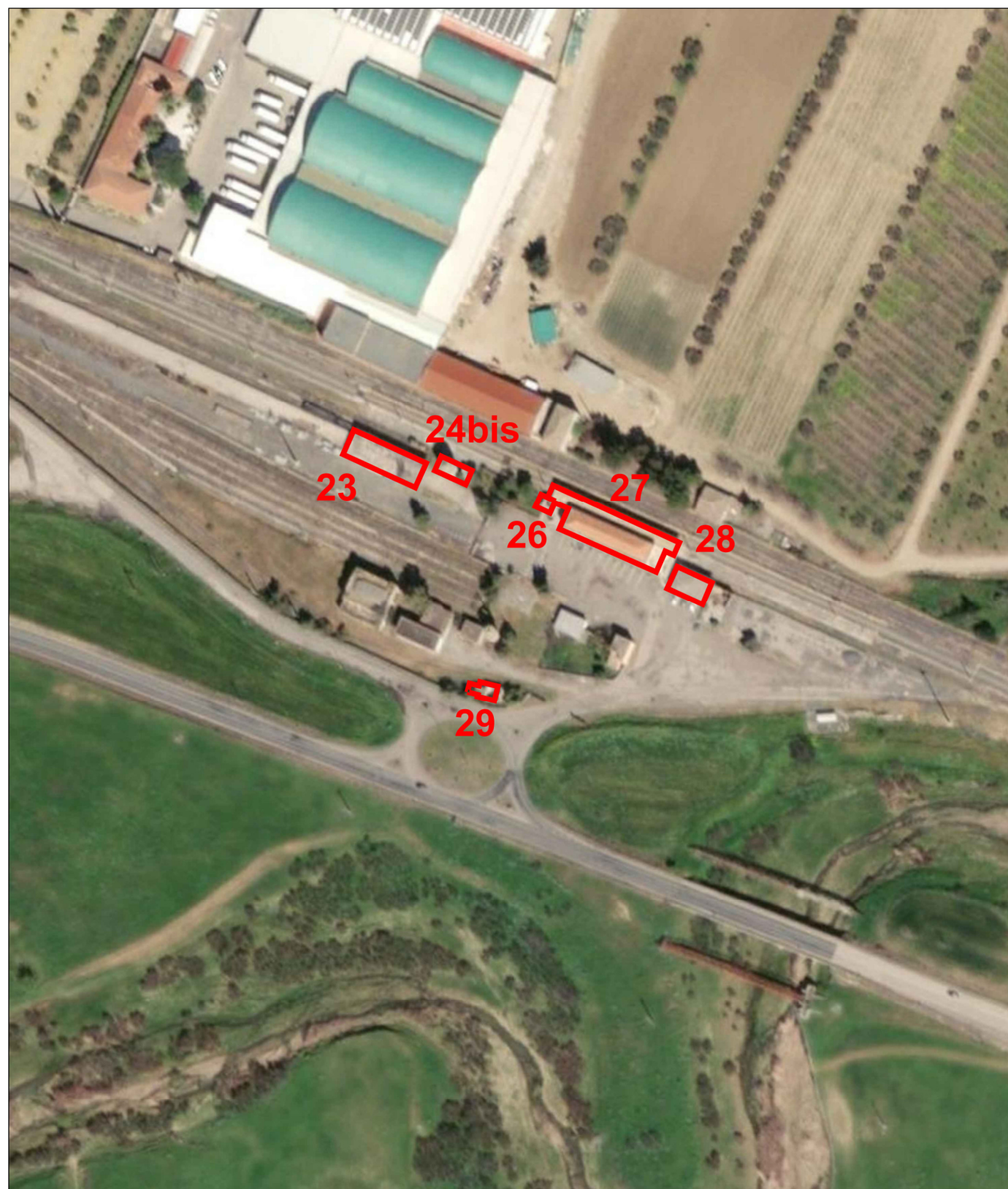


COMMESSA RS3V	LOTTO 40	CODIFICA D22RH	DOCUMENTO IF0000002	REV. A	FOGLIO 12 di 13
------------------	-------------	-------------------	------------------------	-----------	--------------------

Rudere

Pk 14+420

29



Rudere

Pk 14+610

30

