

PLANIMETRIA DI CAMPIONAMENTO

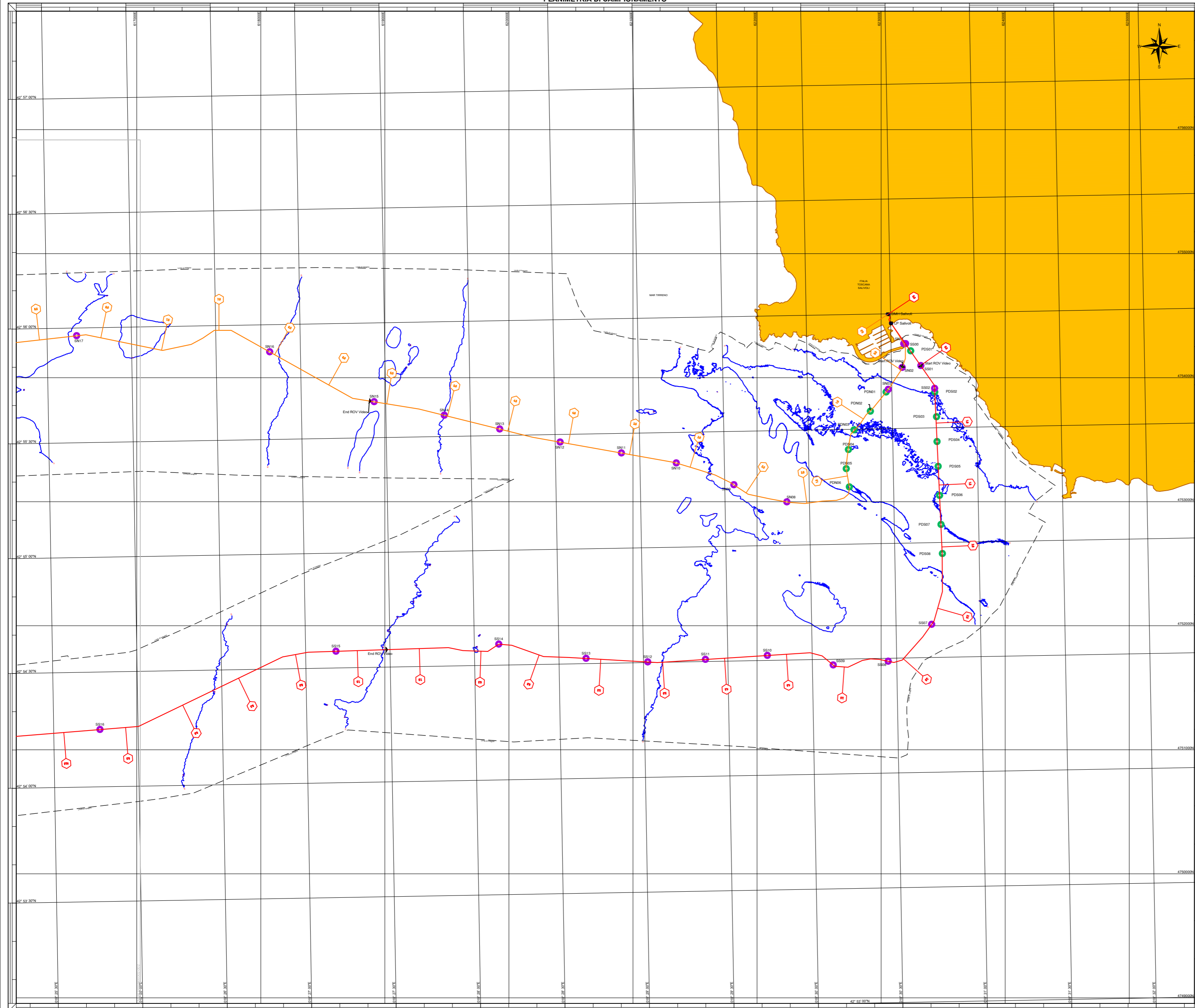


Table with 5 columns: ID, Coordinate UTM 32 N (m) (Northing, Easting, Lat, Long), KP (m), Prof., and Distanza dalla costa (m). It lists sampling stations from POND01 to PCMA05.

Table with 5 columns: ID, Coordinate UTM 32 N (m) (Northing, Easting, Lat, Long), KP (m), Prof., and Distanza dalla costa (m). It lists sampling stations from SN01 to SN17.

Table with 5 columns: ID, Coordinate UTM 32 N (m) (Northing, Easting, Lat, Long), KP (m), Prof., and Distanza dalla costa (m). It lists sampling stations from SN18 to SN32.

Table with 5 columns: ID, Coordinate UTM 32 N (m) (Northing, Easting, Lat, Long), KP (m), Prof., and Distanza dalla costa (m). It lists sampling stations from SN33 to SN51.

Table with 5 columns: ID, Coordinate UTM 32 N (m) (Northing, Easting, Lat, Long), KP (m), Prof., and Distanza dalla costa (m). It lists sampling stations from SN52 to SN69.

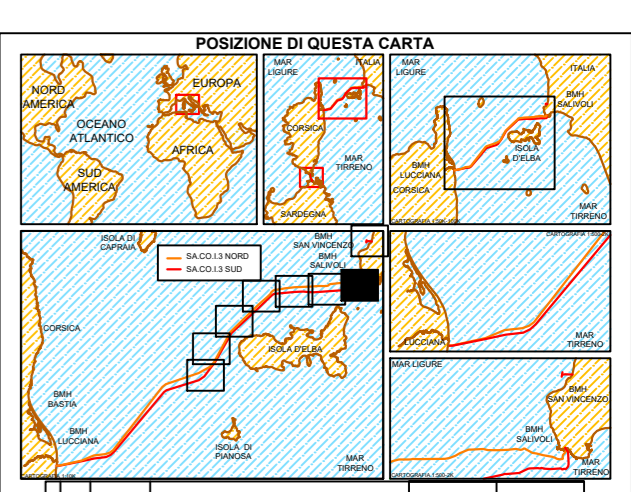
Table with 5 columns: ID, Coordinate UTM 32 N (m) (Northing, Easting, Lat, Long), KP (m), Prof., and Distanza dalla costa (m). It lists sampling stations from SW01 to SW12 bis.

LEGENDA: Symbols for cartographic elements like station types, bathymetry lines, and map features.

BATIMETRIA: Table showing bathymetry data for various stations, including coordinates and depth measurements.

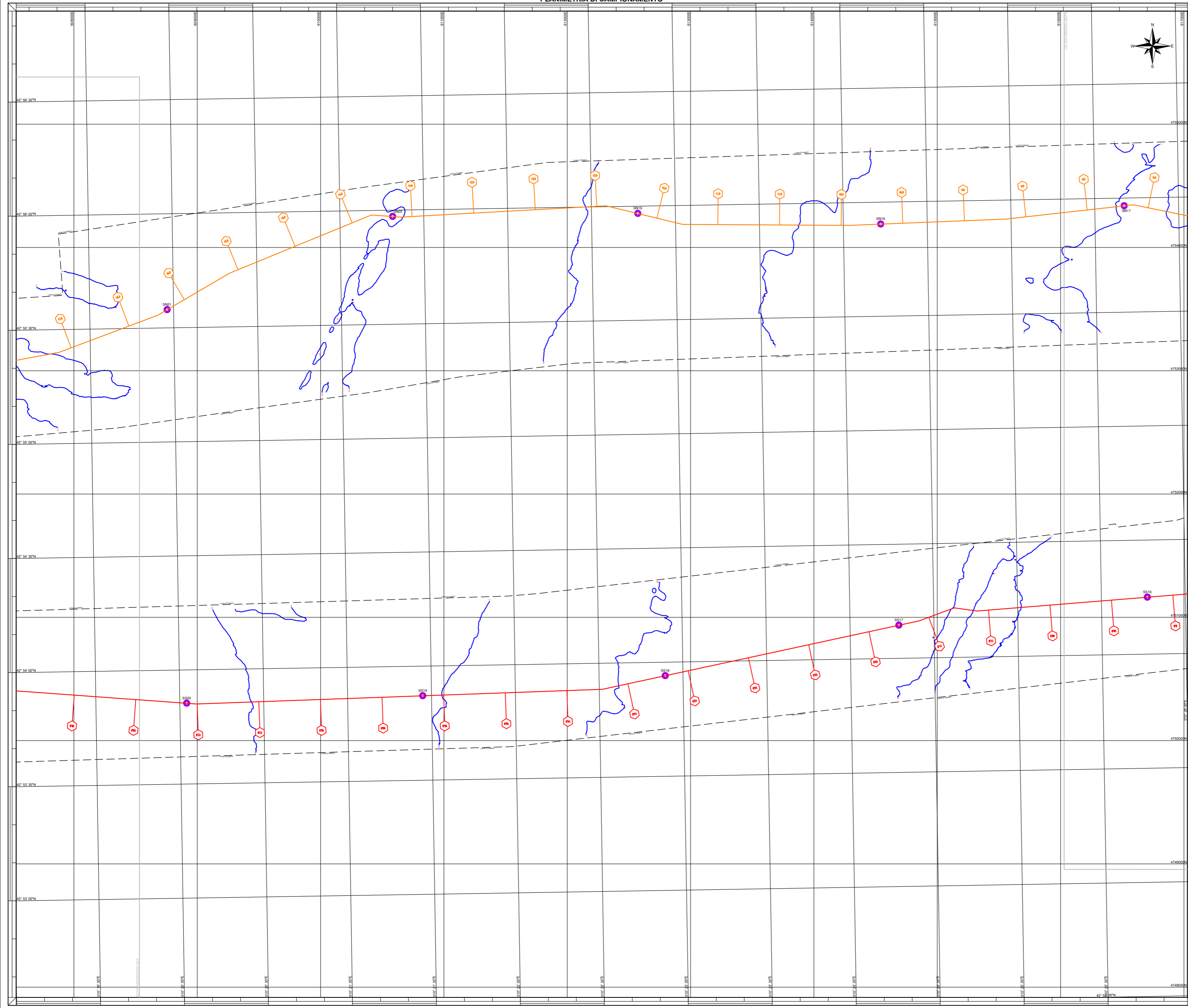
STAZIONI DI CAMPIONAMENTO: Table detailing the characteristics of sampling stations, such as station type, depth, and location.

NOTE GENERALI: General notes regarding the data collection, including coordinate systems and measurement methods.



Administrative form for data management, including fields for project name, date, and user information.

PLANIMETRIA DI CAMPIONAMENTO



Stazioni per la valutazione dello stato di salute della Posizione oceanica

ID	Coordinate UTM 32 N (m)	Coordinate WGS 84 (DMS)	XP (m)	Prof. (m)	Distancia dalla costa (m)		
PON01	473883.78	62340.11	42° 55' 39.568" N	10° 30' 27.934" E	0.715	-14	439.3
PON02	473737.91	62291.22	42° 55' 34.626" N	10° 30' 22.215" E	0.915	-15	555.9
PON03	473718.62	62278.11	42° 55' 32.811" N	10° 30' 20.288" E	1.117	-19	681.1
PON04	473549.79	62276.59	42° 55' 24.698" N	10° 30' 14.822" E	1.286	-23	840.3
PON05	473363.63	62278.85	42° 55' 19.711" N	10° 30' 13.794" E	1.441	-25	993.5
PON06	473118.71	62274.93	42° 55' 14.937" N	10° 30' 12.981" E	1.593	-30	1148.7
PS01	475215.78	62328.16	42° 55' 50.201" N	10° 30' 36.930" E	0.364	-4	214.3
PS02	473883.95	62342.36	42° 55' 39.334" N	10° 30' 45.218" E	0.756	-9	286.8
PS03	473584.46	62349.61	42° 55' 32.864" N	10° 30' 45.703" E	0.953	-12	376.9
PS04	473348.17	62349.69	42° 55' 26.319" N	10° 30' 45.723" E	1.149	-15	472.9
PS05	473284.57	62349.66	42° 55' 19.894" N	10° 30' 45.960" E	1.349	-19	579.4
PS06	473050.16	62347.06	42° 55' 12.291" N	10° 30' 46.277" E	1.584	-19	727.7
PS07	472826.51	62349.46	42° 55' 04.697" N	10° 30' 46.599" E	1.829	-20	854.6
PS08	472581.33	62349.86	42° 54' 57.084" N	10° 30' 46.910" E	2.054	-25	1015.2
LT01	474694.72	62385.07	42° 51' 09.99" N	10° 31' 13.93" E	0.167	-7	127.3
LT02	474610.38	62365.08	42° 51' 10.29" N	10° 31' 03.93" E	0.366	-12	246.5
LT03	474610.07	62347.08	42° 51' 10.59" N	10° 30' 54.45" E	0.564	-12	322.4
LT04	474611.76	62328.86	42° 51' 10.89" N	10° 30' 45.70" E	0.763	-11.5	370.6
LT05	474612.79	62308.63	42° 51' 11.49" N	10° 30' 37.07" E	0.960	-17	518.4
PCM01	4566189.22	519996.22	41° 14' 48.706" N	9° 14' 19.155" E	16.508	-7	156.7
PCM02	456648.39	520055.42	41° 14' 50.635" N	9° 14' 21.791" E	16.425	-9	174.4
PCM03	456688.86	520115.82	41° 14' 52.575" N	9° 14' 24.314" E	16.339	-11	180.5
PCM04	456667.81	52013.89	41° 14' 55.792" N	9° 14' 26.891" E	16.201	-20	195.6
PCM05	456600.99	520055.51	41° 14' 58.788" N	9° 14' 32.485" E	16.069	-25	244.4

Stazioni di campionamento del sedimento e della zona benthica

ID	Coordinate UTM 32 N (m)	Coordinate WGS 84 (DMS)	XP (m)	Prof. (m)	Distancia dalla costa (m)		
SN01	475273.83	62332.29	42° 55' 52.115" N	10° 30' 54.123" E	0.284	-3	179.9
SN02	475406.97	62316.55	42° 55' 45.902" N	10° 30' 53.796" E	0.483	-6	336.4
SN03	475265.63	62350.99	42° 55' 45.240" N	10° 30' 53.015" E	0.685	-7	448.7
SN04	475298.07	62229.99	42° 55' 11.310" N	10° 29' 51.952" E	2.162	-37	1331.4
SN09	475318.16	62381.04	42° 55' 16.037" N	10° 29' 53.240" E	2.618	-39	1179.9
SN10	475312.32	62314.82	42° 55' 15.000" N	10° 29' 52.360" E	3.136	-41	1263.6
SN11	475319.51	62006.49	42° 55' 14.800" N	10° 28' 51.430" E	5.566	-43	1444.4
SN12	475348.06	62042.54	42° 55' 27.998" N	10° 28' 31.748" E	4.068	-45	1813.7
SN13	475358.69	62025.45	42° 55' 31.685" N	10° 28' 10.347" E	4.567	-47	2223.1
SN14	475366.74	62049.66	42° 55' 35.530" N	10° 27' 52.700" E	5.027	-50	2623.5
SN15	475380.75	61893.49	42° 55' 39.882" N	10° 27' 25.885" E	5.603	-52	3156.4
SN16	475420.95	61807.40	42° 55' 52.891" N	10° 26' 49.053" E	6.546	-60	3930.9
SN17	475437.92	61615.37	42° 55' 57.999" N	10° 25' 58.567" E	8.167	-69	5481.3
SN18	475418.29	61451.14	42° 55' 54.229" N	10° 24' 13.389" E	10.179	-77	5558.46
SN19	475425.76	61257.85	42° 55' 58.075" N	10° 22' 46.544" E	12.136	-87	7176.2
SN20	475425.02	61058.02	42° 55' 58.330" N	10° 21' 18.020" E	14.158	-100	8096.9
SN21	475394.85	60875.87	42° 55' 54.706" N	10° 19' 57.687" E	16.161	-109	8730.9
SN22	475398.98	60684.32	42° 55' 51.000" N	10° 18' 13.024" E	18.151	-110	8720.2
SN23	475303.41	60484.87	42° 55' 46.200" N	10° 17' 49.879" E	20.15	-113	10380.9
SN24	475296.15	60288.31	42° 55' 40.590" N	10° 16' 35.520" E	22.105	-115	10244.5
SN25	475280.56	60087.64	42° 55' 37.810" N	10° 14' 07.604" E	24.192	-116	10393.4
SN26	475289.84	59926.01	42° 55' 30.095" N	10° 12' 58.567" E	26.806	-114	10684.3
SN27	475111.71	59741.29	42° 54' 21.080" N	10° 11' 36.764" E	28.395	-116	10204.4
SN28	474925.23	59571.64	42° 53' 24.295" N	10° 10' 20.248" E	30.912	-114	8734.5
SN29	474849.89	59417.68	42° 52' 45.228" N	10° 09' 11.426" E	33.891	-113	7880.7
SN30	474665.21	59249.21	42° 51' 52.200" N	10° 07' 02.440" E	36.49	-109	6774.4
SN31	474610.73	59078.96	42° 51' 43.714" N	10° 06' 36.099" E	36.95	-110	6394.3
SN32	474508.72	58905.29	42° 51' 31.175" N	10° 05' 23.093" E	38.888	-99	6112.2
SN33	474305.06	58741.99	42° 50' 52.274" N	10° 04' 11.000" E	40.861	-96	6208.2
SN34	474242.85	58576.14	42° 49' 47.085" N	10° 02' 58.403" E	43.147	-86	6239.1
SN35	474086.74	58489.84	42° 48' 56.290" N	10° 02' 18.634" E	44.957	-87	6154.2
SN35 bis	473928.06	58411.79	42° 48' 02.820" N	10° 01' 55.671" E	46.807	-87	6264.9
SN36	473761.10	58307.58	42° 47' 19.668" N	10° 00' 54.592" E	48.652	-85	7204.4
SN37	473620.52	58209.23	42° 46' 20.281" N	10° 00' 21.571" E	50.638	-86	7835.7
SN38	473452.73	58100.04	42° 45' 19.970" N	9° 59' 51.281" E	52.725	-74	8645.7
SN39	473205.12	58011.15	42° 44' 11.420" N	9° 59' 18.480" E	55.172	-61	9960.9
SN40	473078.18	58039.31	42° 43' 29.161" N	9° 58' 52.629" E	56.995	-59	10975.9
SN41	473018.60	57944.03	42° 42' 11.024" N	9° 57' 27.862" E	58.794	-183	12975.2
SS00	474427.84	62119.51	42° 55' 12.000" N	10° 30' 25.180" E	0.287	-3	174.2
SS01	475406.89	62320.09	42° 55' 46.300" N	10° 30' 40.440" E	0.502	-5	226.1
SS02	475391.21	62341.01	42° 55' 40.281" N	10° 30' 45.190" E	0.72	-8	274.6
SS07	475202.81	62340.26	42° 54' 48.053" N	10° 30' 46.040" E	1.164	-17	353.2
SS08	475173.47	62306.99	42° 54' 29.212" N	10° 30' 26.960" E	1.331	-39	395.8
SS09	475168.17	62261.64	42° 54' 28.488" N	10° 30' 39.911" E	1.594	-39	228.4
SS10	475130.10	62208.01	42° 54' 21.280" N	10° 30' 40.099" E	1.454	-38	251.2
SS11	475128.01	62158.62	42° 54' 30.538" N	10° 29' 22.018" E	1.605	-39	2604.5
SS12	475107.57	62118.61	42° 54' 30.138" N	10° 29' 01.501" E	1.521	-40	2744.9
SS13	475106.36	62081.61	42° 54' 34.368" N	10° 28' 01.613" E	1.638	-41	2951.8
SS14	475125.28	61957.95	42° 54' 35.478" N	10° 28' 08.613" E	1.538	-48	3234.2
SS15	475193.80	61805.65	42° 54' 34.354" N	10° 27' 10.771" E	1.672	-51	4254.1
SS16	475124.84	61670.45	42° 54' 34.960" N	10° 25' 43.889" E	1.708	-66	3723.2
SS17	475058.84	61468.74	42° 54' 09.604" N	10° 24' 17.624" E	1.752	-72	3334.6
SS18	475025.99	61274.23	42° 53' 56.488" N	10° 22' 53.637" E	1.691	-78	3775.3
SS19	475032.25	61028.36	42° 53' 52.200" N	10° 21' 28.860" E	1.567	-91	5087.8
SS20	475012.67	60819.13	42° 53' 51.200" N	10° 20' 04.440" E	1.486	-103	6794.9
SS21	475045.99	60698.57	42° 53' 56.880" N	10° 18' 35.440" E	1.967	-109	8518.7
SS22	475015.41	60494.45	42° 53' 48.344" N	10° 17' 09.010" E	2.167	-109	7957.5
SS23	474999.61	60320.73	42° 53' 45.090" N	10° 15' 59.980" E	2.417	-111	7238.3
SS24	474978.58	60094.37	42° 53' 35.933" N	10° 14' 09.394" E	2.574	-113	7345.8
SS25	474968.08	59897.20	42° 53' 32.229" N	10° 12' 45.705" E	2.718	-113	8135.6
SS26	474860.85	59778.59	42° 52' 46.319" N	10° 11' 46.319" E	2.978	-112	8671.9
SS27	474762.33	59549.33	42° 52' 38.303" N	10° 10' 06.910" E	3.17	-112	7425.8
SS28	474690.12	59389.63	42° 52' 08.284" N	10° 08' 49.220" E	3.199	-112	6702.1
SS29	474697.10	59197.60	42° 51' 38.848" N	10° 07' 33.104" E	3.644	-109	5861.1
SS30	474621.11	59022.99	42° 51' 16.959" N	10° 06' 19.909" E	3.925	-100	5795.5
SS31	474452.80	58825.63	42° 50' 46.961" N	10° 05' 00.216" E	3.942	-97	5704.7
SS32	474385.30	58720.22	42° 50' 02.326" N	10° 04' 02.017" E	4.145	-89	5670.5
SS33	474318.41	58616.52	42° 49' 09.869" N	10° 03' 18.021" E	4.242	-89	5614.4
SS34	474201.08	58519.31	42° 48' 47.301" N	10° 02' 31.303" E	4.477	-89	5786.3
SS35	473969.08	58430.85	42° 47' 58.297" N	10° 01' 14.051" E	4.636	-87	6050.7
SS36	473732.51	58360.55	42° 47' 01.670" N	10° 00' 17.754" E	4.828	-86	6657.4
SS37	473502.59	58246.64	42° 46' 13.084" N	10° 00' 36.743" E	5.015	-87	7479.5
SS37 bis	473417.40	58261.30	42° 45' 19.977" N	10° 01' 02.907" E	5.1915	-85	7012.3
SS38	473280.21	58155.73	42° 44' 26.903" N	10° 01' 11.130" E	5.1708	-82	7287.3
SS39	473105.35	58126.42	42° 43' 38.684" N	10° 00' 20.154" E	5.5742	-81	9031.9
SS40	472964.81	58062.07	42° 43' 01.268" N	9° 59' 19.562" E	5.7627	-92	11020.9
SS41	472891.20	57966.77	42° 42' 30.737" N	9° 57' 55.580" E	5.9141	-100	11513.9
LT06	474697.14	62266.26	42° 51' 10.609" N	10° 30' 38.440" E	1.36	-23	781.2
LT09	474697.14	62266.26	42° 51' 10.772" N	10° 30' 38.632" E	1.806	-25	1106.6
SW01	456620.69	520011.32	41° 14' 49.272" N	9° 14' 19.810" E	16.484	-7	182.9
SW02	456628.40	520012.10	41° 14' 54.847" N	9° 14' 22.870" E	16.285	-14	184.8
SW03	456628.48	520032.72	41° 14' 59.673" N	9° 14' 33.682" E	16.03	-25	264.8
SW04	456691.16	520056.64	41° 15' 01.694" N	9° 14' 41.130" E	15.841	-32	341.7
SW05	456671.43	520063.93	41° 15' 01.690" N	9° 14' 45.791" E	15.682		

PLANIMETRIA DI CAMPIONAMENTO

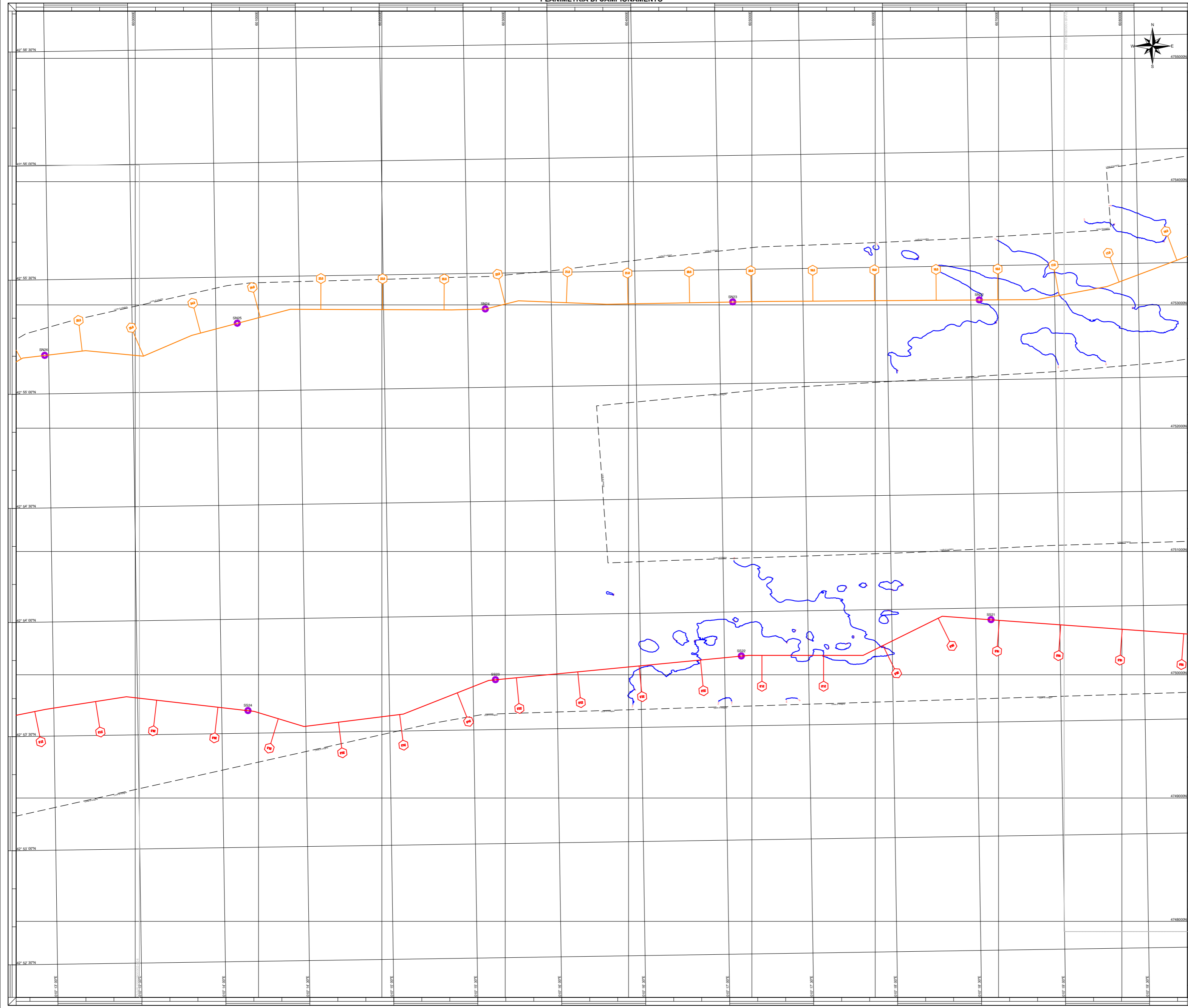


Table with 5 columns: ID, Coordinate UTM 32 N (m) (Northing, Easting), Coordinate WGS 84 (GMS) (Lat, Long), KP (m), Prof. (m), and Distanza dalla costa (m). It lists various sampling stations and their coordinates.

Table with 5 columns: ID, Coordinate UTM 32 N (m) (Northing, Easting), Coordinate WGS 84 (GMS) (Lat, Long), KP (m), Prof. (m), and Distanza dalla costa (m). It lists additional sampling stations and their coordinates.

Table with 5 columns: ID, Coordinate UTM 32 N (m) (Northing, Easting), Coordinate WGS 84 (GMS) (Lat, Long), KP (m), Prof. (m), and Distanza dalla costa (m). It lists further sampling stations and their coordinates.

Table with 5 columns: ID, Coordinate UTM 32 N (m) (Northing, Easting), Coordinate WGS 84 (GMS) (Lat, Long), KP (m), Prof. (m), and Distanza dalla costa (m). It lists the final set of sampling stations and their coordinates.

LEGENDA: Symbols for cartographic elements including station types, bathymetry, and map boundaries.

BATIMETRIA: Bathymetric data and STAZIONI DI CAMPIONAMENTO: Sampling station details for Cavo Nord, Cavo Sud, Cavo Ovest, and Cavo Est.

NOTE GENERALI: General notes regarding the coordinate system, datum, and map scale.

Scale bar and TRUE SCALE: 1:10002.675600.

CESI logo and contact information.

POSIZIONE DI QUESTA CARTA: Regional map showing the location of the study area in the Mediterranean Sea.

Administrative forms including project details, dates, and signatures.

PLANIMETRIA DI CAMPIONAMENTO

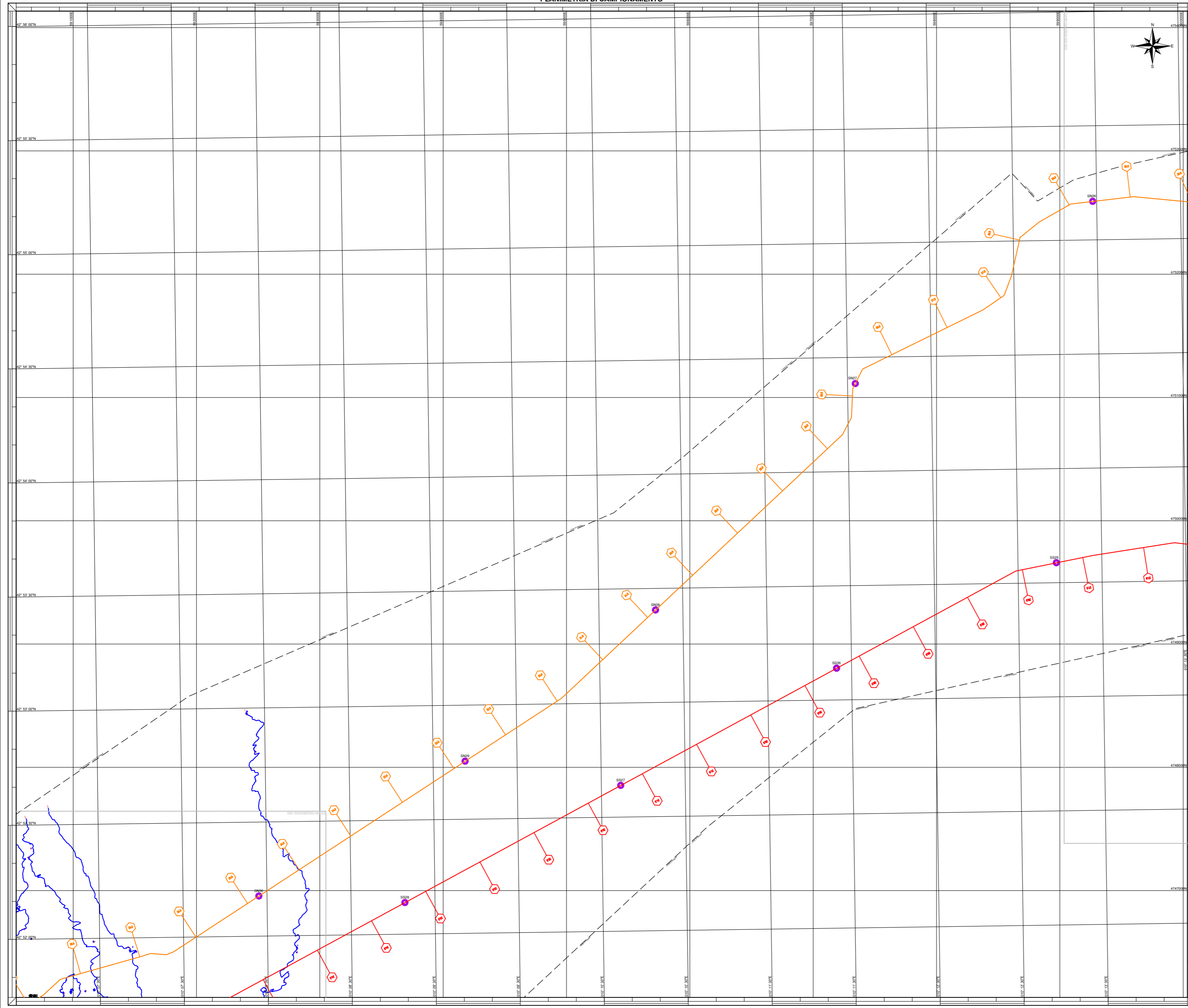


Table with 5 columns: ID, Coordinate UTM 32 N (m) (Northing, Easting, Lat, Long), KP (km), Prof. (m), and Distanza dalla costa (m). It lists various sampling stations and their coordinates.

Table with 5 columns: ID, Coordinate UTM 32 N (m) (Northing, Easting, Lat, Long), KP (km), Prof. (m), and Distanza dalla costa (m). It lists additional sampling stations and their coordinates.

Table with 5 columns: ID, Coordinate UTM 32 N (m) (Northing, Easting, Lat, Long), KP (km), Prof. (m), and Distanza dalla costa (m). It lists further sampling stations and their coordinates.

Table with 5 columns: ID, Coordinate UTM 32 N (m) (Northing, Easting, Lat, Long), KP (km), Prof. (m), and Distanza dalla costa (m). It lists more sampling stations and their coordinates.

Table with 5 columns: ID, Coordinate UTM 32 N (m) (Northing, Easting, Lat, Long), KP (km), Prof. (m), and Distanza dalla costa (m). It lists the final set of sampling stations and their coordinates.

LEGENDA: Symbols for cartographic elements including station types, bathymetry, and sampling methods.

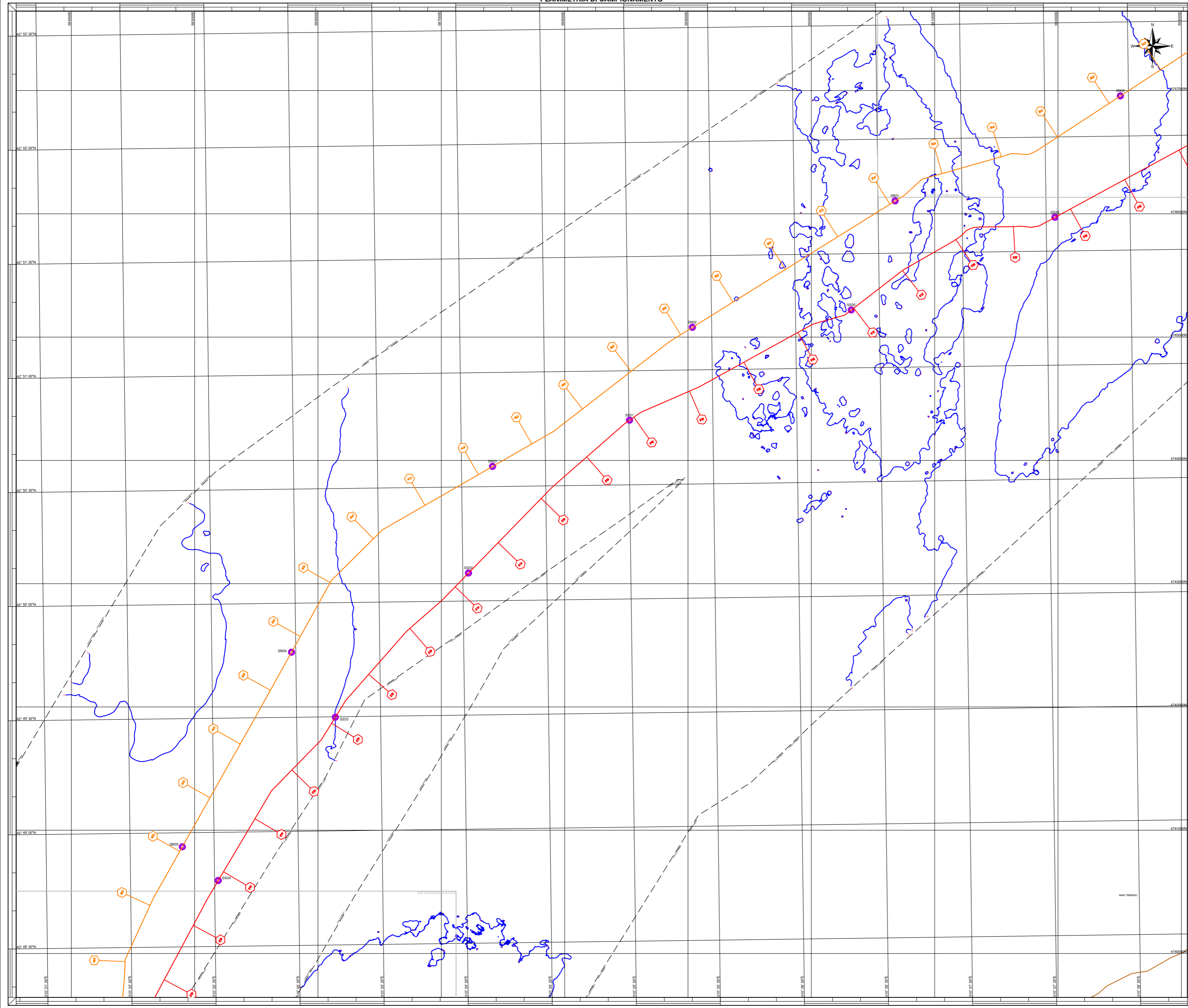
BATIMETRIA: Bathymetric data and station descriptions for Cavo Nord, Cavo Sud, Cavo Ovest, and Cavo Est.

NOTE GENERALI: General notes regarding the coordinate system, datum, and map scale.

POSIZIONE DI QUESTA CARTA: Regional map showing the location of the study area in the Mediterranean Sea.

Administrative and technical information including project details, scale, and contact information for the surveying firm.

PLANIMETRIA DI CAMPIONAMENTO



Stazioni per la valutazione dello stato di salute della Posizione oceanica

ID	Coordinate UTM 32 N (m)	Coordinate WGS 84 (DMS)	XP (m)	Prof. (m)	Distanza dalla costa (m)		
P001	473883.83	62340.11	42° 55' 39.568" N	10° 30' 27.934" E	0.715	-14	493.3
P002	473737.91	62293.22	42° 55' 34.620" N	10° 30' 22.215" E	0.915	-15	555.9
P003	473718.51	62278.11	42° 55' 28.812" N	10° 30' 14.117" E	1.117	-19	681.1
P004	473419.79	62276.59	42° 55' 24.698" N	10° 30' 14.822" E	1.286	-23	840.3
P005	473326.63	62278.85	42° 55' 19.711" N	10° 30' 13.794" E	1.441	-25	993.5
P006	473118.77	62274.93	42° 55' 13.977" N	10° 30' 10.246" E	1.790	-30	1148.7
P007	472415.78	62328.16	42° 55' 50.201" N	10° 30' 36.930" E	0.364	-4	214.3
P008	473883.95	62342.36	42° 55' 39.334" N	10° 30' 45.218" E	0.756	-9	286.8
P009	473268.46	62346.61	42° 55' 32.864" N	10° 30' 45.703" E	0.953	-12	376.9
P004	473348.31	62349.69	42° 55' 36.337" N	10° 30' 45.723" E	1.149	-15	472.9
P005	473284.57	62349.66	42° 55' 19.844" N	10° 30' 45.960" E	1.349	-19	579.4
P006	473503.16	62347.06	42° 55' 12.251" N	10° 30' 46.277" E	1.584	-19	727.7
P007	473263.91	62349.66	42° 55' 08.687" N	10° 30' 46.599" E	1.829	-20	854.6
P008	473281.31	62349.86	42° 54' 57.084" N	10° 30' 46.910" E	2.054	-25	1015.2
LT01	474694.72	62385.07	43° 01' 09.99" N	10° 31' 11.53" E	0.167	7	127.3
LT02	474610.38	62385.08	43° 01' 10.29" N	10° 31' 03.17" E	0.366	-12	344.5
LT03	474610.07	62347.08	43° 01' 10.59" N	10° 30' 54.45" E	0.564	-12	522.4
LT04	474611.76	62329.86	43° 01' 10.89" N	10° 30' 45.70" E	0.761	-11.5	720.6
LT05	474612.79	62308.63	43° 01' 11.49" N	10° 30' 37.01" E	0.960	-17	918.4
PCM01	4566189.22	519996.22	41° 14' 48.706" N	9° 14' 19.150" E	16.508	-7	156.7
PCM02	456648.39	520055.42	41° 14' 50.619" N	9° 14' 21.710" E	16.425	-9	174.4
PCM03	456608.86	520115.82	41° 14' 52.571" N	9° 14' 24.314" E	16.339	-11	180.5
PCM04	456667.10	520133.89	41° 14' 55.791" N	9° 14' 26.891" E	16.201	-20	195.6
PCM05	456600.99	520005.51	41° 14' 58.788" N	9° 14' 32.485" E	16.069	-25	244.4

Stazioni di campionamento del sedimento e della zona bentonica

ID	Coordinate UTM 32 N (m)	Coordinate WGS 84 (DMS)	XP (m)	Prof. (m)	Distanza dalla costa (m)		
SN01	475273.83	62332.29	42° 55' 52.115" N	10° 30' 34.512" E	0.284	-3	179.9
SN02	475406.97	62316.55	42° 55' 45.902" N	10° 30' 33.796" E	0.483	-6	336.4
SN03	475260.63	62320.92	42° 55' 40.267" N	10° 30' 34.512" E	0.682	-12	448.7
SN08	475298.07	62229.99	42° 55' 11.317" N	10° 29' 51.923" E	2.162	-37	1311.4
SN09	475316.31	62181.04	42° 55' 16.037" N	10° 29' 53.240" E	2.618	-39	1179.9
SN10	475312.61	62184.92	42° 55' 15.000" N	10° 29' 53.000" E	3.116	-41	220.6
SN11	475319.52	62006.49	42° 55' 24.807" N	10° 28' 53.709" E	1.566	-43	1444.4
SN12	475340.36	62042.54	42° 55' 27.980" N	10° 28' 31.740" E	4.068	-45	1813.7
SN13	475356.69	62025.45	42° 55' 31.685" N	10° 28' 34.941" E	4.567	-47	2223.1
SN14	475366.91	62049.66	42° 55' 35.330" N	10° 28' 27.670" E	5.027	-50	2624.5
SN15	475380.75	61813.49	42° 55' 39.382" N	10° 27' 25.885" E	5.403	-52	3156.4
SN16	475407.05	61807.40	42° 55' 40.891" N	10° 26' 40.057" E	6.546	-60	3939.9
SN17	475413.71	61614.29	42° 55' 41.080" N	10° 25' 53.971" E	8.198	-69	5481.3
SN18	475418.29	61454.14	42° 55' 54.225" N	10° 24' 13.389" E	10.179	-77	7558.46
SN19	475425.36	61257.85	42° 55' 58.071" N	10° 22' 58.547" E	12.136	-87	9716.2
SN20	475430.52	61058.02	42° 55' 58.250" N	10° 21' 48.057" E	14.158	-100	12096.9
SN21	475348.85	60875.87	42° 55' 34.700" N	10° 19' 57.687" E	16.161	-109	1570.9
SN22	475309.98	60804.32	42° 55' 17.000" N	10° 18' 18.000" E	18.151	-110	1870.2
SN23	475323.47	60484.67	42° 55' 16.000" N	10° 17' 48.000" E	20.151	-113	2109.9
SN24	475296.15	60388.31	42° 55' 20.500" N	10° 15' 36.500" E	22.155	-115	2404.5
SN25	475260.56	60027.64	42° 55' 17.800" N	10° 14' 07.600" E	24.192	-116	2693.4
SN26	475249.84	59726.01	42° 55' 10.000" N	10° 12' 58.500" E	25.806	-114	2868.3
SN27	475111.71	59744.29	42° 54' 21.000" N	10° 11' 34.700" E	28.395	-116	3029.4
SN28	474925.23	59571.64	42° 53' 24.294" N	10° 10' 20.248" E	30.912	-114	3745.5
SN29	474848.59	59417.68	42° 52' 45.224" N	10° 09' 11.268" E	33.892	-113	4280.7
SN30	474665.92	59250.43	42° 51' 52.500" N	10° 07' 02.500" E	36.899	-109	4779.4
SN31	474610.73	59078.96	42° 51' 43.742" N	10° 06' 36.099" E	36.95	-110	6394.3
SN32	474508.27	58905.29	42° 51' 11.715" N	10° 05' 23.093" E	38.888	-99	6112.2
SN33	474320.01	58741.99	42° 50' 24.000" N	10° 03' 18.000" E	40.888	-96	6208.2
SN34	474242.85	58576.14	42° 49' 47.085" N	10° 02' 58.403" E	43.147	-86	6239.1
SN35	474084.74	58489.84	42° 48' 56.200" N	10° 02' 18.634" E	44.957	-87	6154.2
SN35 bis	473926.06	58411.79	42° 48' 02.000" N	10° 01' 55.071" E	46.807	-84	6264.9
SN36	473761.10	58307.58	42° 47' 19.668" N	10° 00' 54.502" E	48.652	-85	7204.4
SN37	473600.52	58209.23	42° 46' 20.281" N	10° 00' 21.571" E	50.638	-86	7831.7
SN38	473452.74	58100.04	42° 45' 19.970" N	9° 59' 54.281" E	52.725	-74	8645.7
SN39	473302.91	58011.79	42° 44' 14.400" N	9° 58' 48.800" E	55.172	-61	9669.9
SN40	473071.18	58039.31	42° 43' 29.161" N	9° 57' 52.629" E	56.695	-95	10975.9
SN41	473018.60	57848.03	42° 43' 11.024" N	9° 57' 27.865" E	58.754	-103	12975.2
SN00	474478.84	62119.51	42° 53' 38.160" N	10° 30' 25.160" E	0.207	-3	174.2
SN01	475406.96	62332.09	42° 55' 46.300" N	10° 30' 40.404" E	0.502	-5	226.1
SN02	475391.31	62341.01	42° 55' 46.287" N	10° 30' 45.195" E	0.72	-8	274.6
SN07	475210.11	62340.27	42° 54' 43.600" N	10° 30' 34.700" E	1.164	-17	419.2
SN08	475113.47	62306.99	42° 54' 29.212" N	10° 30' 26.962" E	3.131	-39	1956.8
SN09	475118.31	62261.64	42° 54' 28.888" N	10° 30' 27.991" E	3.594	-39	2268.4
SN10	475110.11	62208.01	42° 54' 18.280" N	10° 29' 40.059" E	4.154	-38	2512.2
SN11	475128.01	62158.62	42° 54' 30.538" N	10° 29' 22.018" E	4.655	-39	2604.5
SN12	475107.57	62118.61	42° 54' 30.187" N	10° 29' 01.501" E	5.121	-40	2749.9
SN13	475106.36	62081.61	42° 54' 30.360" N	10° 28' 39.613" E	5.588	-43	2958.8
SN14	475125.28	62051.95	42° 54' 35.478" N	10° 28' 08.630" E	6.138	-48	3234.2
SN15	475129.80	61805.65	42° 54' 34.545" N	10° 27' 10.771" E	7.672	-51	4254.1
SN16	475124.84	61670.45	42° 54' 34.960" N	10° 25' 48.980" E	9.708	-66	5723.2
SN17	475050.84	61468.74	42° 54' 09.004" N	10° 23' 45.004" E	11.752	-72	7324.6
SN18	475025.99	61274.23	42° 53' 56.488" N	10° 22' 53.637" E	13.691	-78	8775.3
SN19	475016.25	61082.36	42° 53' 52.200" N	10° 21' 26.860" E	15.67	-91	10078.7
SN20	475012.67	60891.43	42° 53' 52.200" N	10° 19' 20.440" E	17.486	-103	11746.9
SN21	475045.99	60698.57	42° 53' 56.804" N	10° 18' 35.440" E	19.567	-109	13181.7
SN22	475015.41	60494.45	42° 53' 48.344" N	10° 17' 01.010" E	21.667	-109	14575.7
SN23	474999.49	60320.73	42° 53' 40.000" N	10° 15' 01.000" E	23.67	-111	15743.3
SN24	474970.58	60094.37	42° 53' 35.933" N	10° 14' 09.394" E	25.754	-113	17445.8
SN25	474968.40	59897.20	42° 53' 32.222" N	10° 12' 45.705" E	27.718	-113	18316.6
SN26	474860.21	59778.59	42° 53' 33.337" N	10° 11' 45.630" E	29.708	-112	19079.9
SN27	474782.33	59649.33	42° 52' 38.303" N	10° 10' 06.910" E	31.7	-112	20215.8
SN28	474690.12	59389.63	42° 52' 08.284" N	10° 08' 49.220" E	33.691	-112	21029.1
SN29	474690.73	59194.60	42° 51' 38.848" N	10° 07' 33.107" E	35.644	-109	21661.1
SN30	474521.31	59023.99	42° 50' 55.169" N	10° 06' 05.900" E	37.525	-100	22765.5
SN31	474424.80	58825.63	42° 50' 46.961" N	10° 05' 00.210" E	39.542	-97	23704.7
SN32	474305.30	58720.22	42° 50' 07.326" N	10° 04' 02.017" E	41.545	-89	24707.5
SN33	474191.81	58614.52	42° 49' 09.869" N	10° 03' 18.011" E	43.542	-89	25614.4
SN34	474091.08	58519.31	42° 48' 47.301" N	10° 02' 31.303" E	44.877	-89	25786.3
SN35	473989.08	58430.85	42° 47' 56.297" N	10° 01' 54.051" E	46.316	-87	26079.7
SN36	473713.14	58360.55	42° 47' 01.670" N	10° 01' 17.750" E	48.268	-86	26574.4
SN37	473580.59	58246.64	42° 46' 13.084" N	10° 00' 36.743" E	50.116	-87	27479.5
SN37 bis	473417.40	58261.30	42° 45' 19.977" N	10° 01' 02.907" E	51.915	-85	28012.3
SN38	473280.21	58155.13	42° 44' 26.903" N	10° 01' 11.100" E	53.708	-82	28879.3
SN39	473105.35	58126.42	42° 43' 38.684" N	10° 00' 20.154" E	55.742	-81	30319.9
SN40	472964.81	58062.07	42° 43' 01.263" N	9° 59' 19.562" E	57.662	-92	31029.9
SN41	472801.10	57962.77	42° 42' 30.717" N	9° 57' 55.580" E	59.841	-100	31513.9
LT06	474697.17	62384.96	42° 55' 10.469" N	10° 30' 58.460" E	1.35	-23	781.2
LT09	474697.14	62346.26	43° 01' 10.772" N	10° 30' 18.632" E	1.806	-25	1106.6
SW01	466620.69	52001.32	41° 14' 48.272" N	9° 14' 19.830" E	16.484	-7	182.9
SW02	466648.20	52002.10	41° 14' 54.847" N	9° 14' 18.470" E	16.285	-14	184.8
SW03	466628.48	52003.72	41° 14' 59.673" N	9° 14' 33.682" E	16.03	-25	264.8
SW04	466695.16	52006.64	41° 15' 01.694" N	9° 14' 41.187" E	15.841	-32	341.7
SW05	466713.41	52002.93	41° 15' 04.699" N	9° 14' 45.291" E	15.682	-36	483.1
SW06	466731.48	52007.10	41° 15' 10				

PLANIMETRIA DI CAMPIONAMENTO

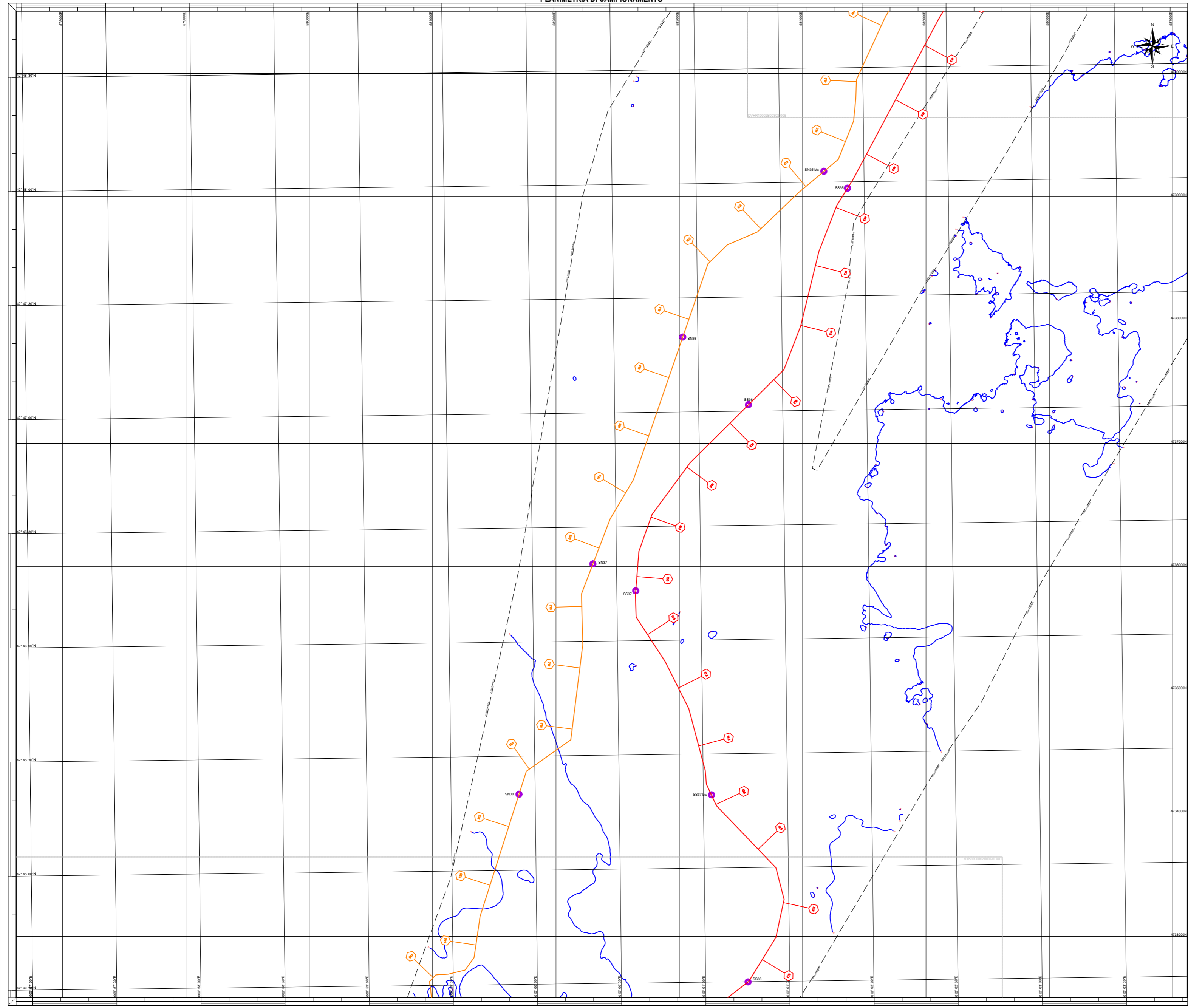


Table with 5 columns: ID, Coordinate UTM 32 N (m), Coordinate WGS 84 (GMS), KP (m), Prof. (m), Distanza dalla costa (m). Lists station coordinates and depths.

Table with 5 columns: ID, Coordinate UTM 32 N (m), Coordinate WGS 84 (GMS), KP (m), Prof. (m), Distanza dalla costa (m). Lists station coordinates and depths.

Table with 5 columns: ID, Coordinate UTM 32 N (m), Coordinate WGS 84 (GMS), KP (m), Prof. (m), Distanza dalla costa (m). Lists station coordinates and depths.

Table with 5 columns: ID, Coordinate UTM 32 N (m), Coordinate WGS 84 (GMS), KP (m), Prof. (m), Distanza dalla costa (m). Lists station coordinates and depths.

Table with 5 columns: ID, Coordinate UTM 32 N (m), Coordinate WGS 84 (GMS), KP (m), Prof. (m), Distanza dalla costa (m). Lists station coordinates and depths.

LEGENDA: Symbols for cartographic elements like station types, bathymetry, and sampling methods.

BATIMETRIA: Bathymetry data and STAZIONI DI CAMPIONAMENTO: Sampling station details for Cavo Nord, Cavo Sud, Cavo Ovest, and Cavo Est.

NOTE GENERALI: General notes regarding the survey, including coordinate systems and data handling.

CESI logo and contact information.

POSIZIONE DI QUESTA CARTA: Regional map showing the location of the study area in the Adriatic Sea.

Administrative forms for project identification, including client and contractor details.

PLANIMETRIA DI CAMPIONAMENTO

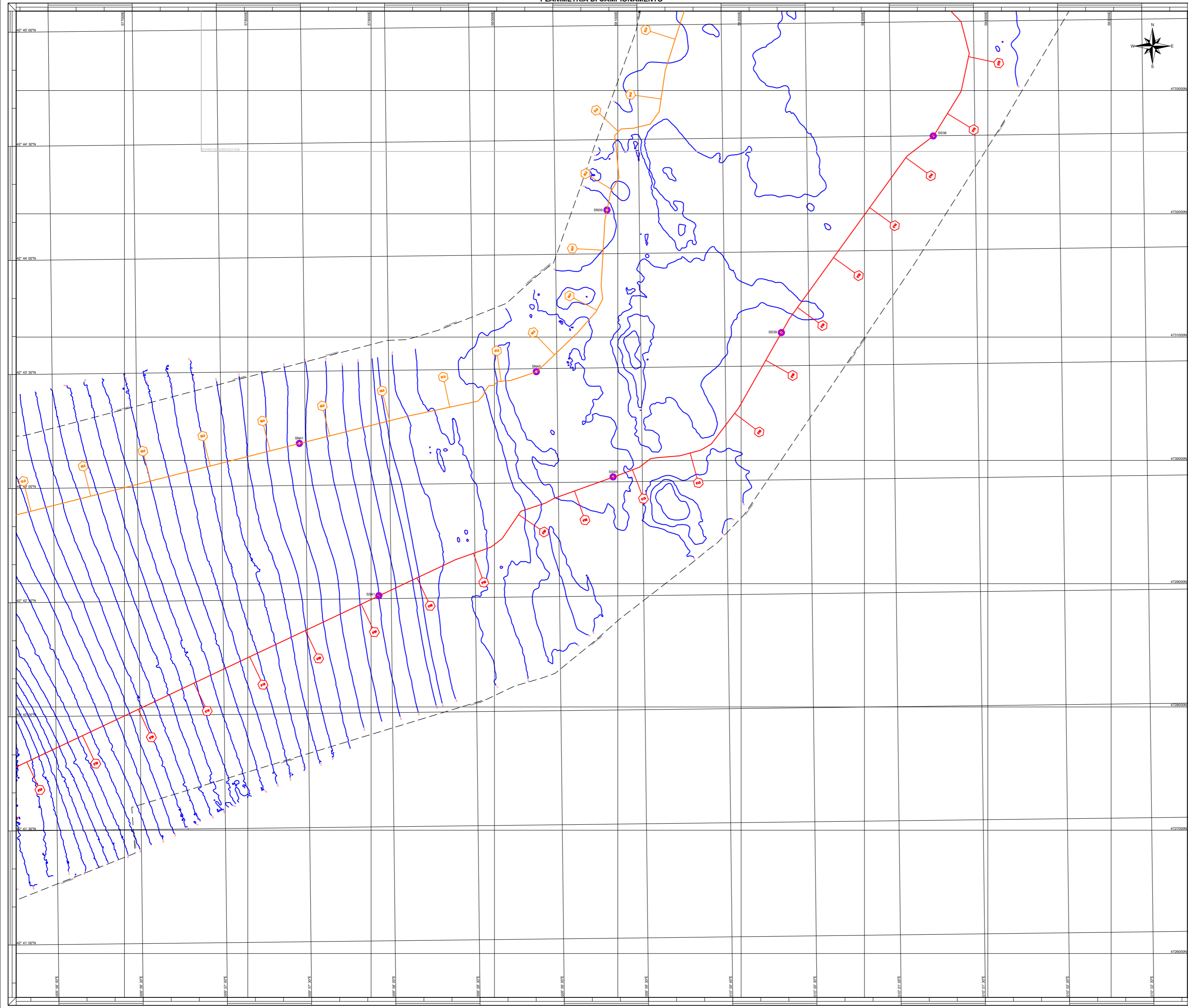


Table with 5 columns: ID, Coordinate UTM 32 m (m), Coordinate WGS 84 (GMS), KP (m), Prof., and Distanza dalla costa. It lists various sampling stations and their coordinates.

Table with 5 columns: ID, Coordinate UTM 32 m (m), Coordinate WGS 84 (GMS), KP (m), Prof., and Distanza dalla costa. It lists additional sampling stations.

Table with 5 columns: ID, Coordinate UTM 32 m (m), Coordinate WGS 84 (GMS), KP (m), Prof., and Distanza dalla costa. It lists further sampling stations.

Table with 5 columns: ID, Coordinate UTM 32 m (m), Coordinate WGS 84 (GMS), KP (m), Prof., and Distanza dalla costa. It lists more sampling stations.

Table with 5 columns: ID, Coordinate UTM 32 m (m), Coordinate WGS 84 (GMS), KP (m), Prof., and Distanza dalla costa. It lists the final set of sampling stations.

LEGENDA: Symbols and descriptions for cartographic elements including station types, bathymetry lines, and sampling routes.

BATIMETRIA: Bathymetry data and STAZIONI DI CAMPIONAMENTO: Sampling station details for Cavo Nord, Cavo Sud, Cavo Ovest, and Cavo Est.

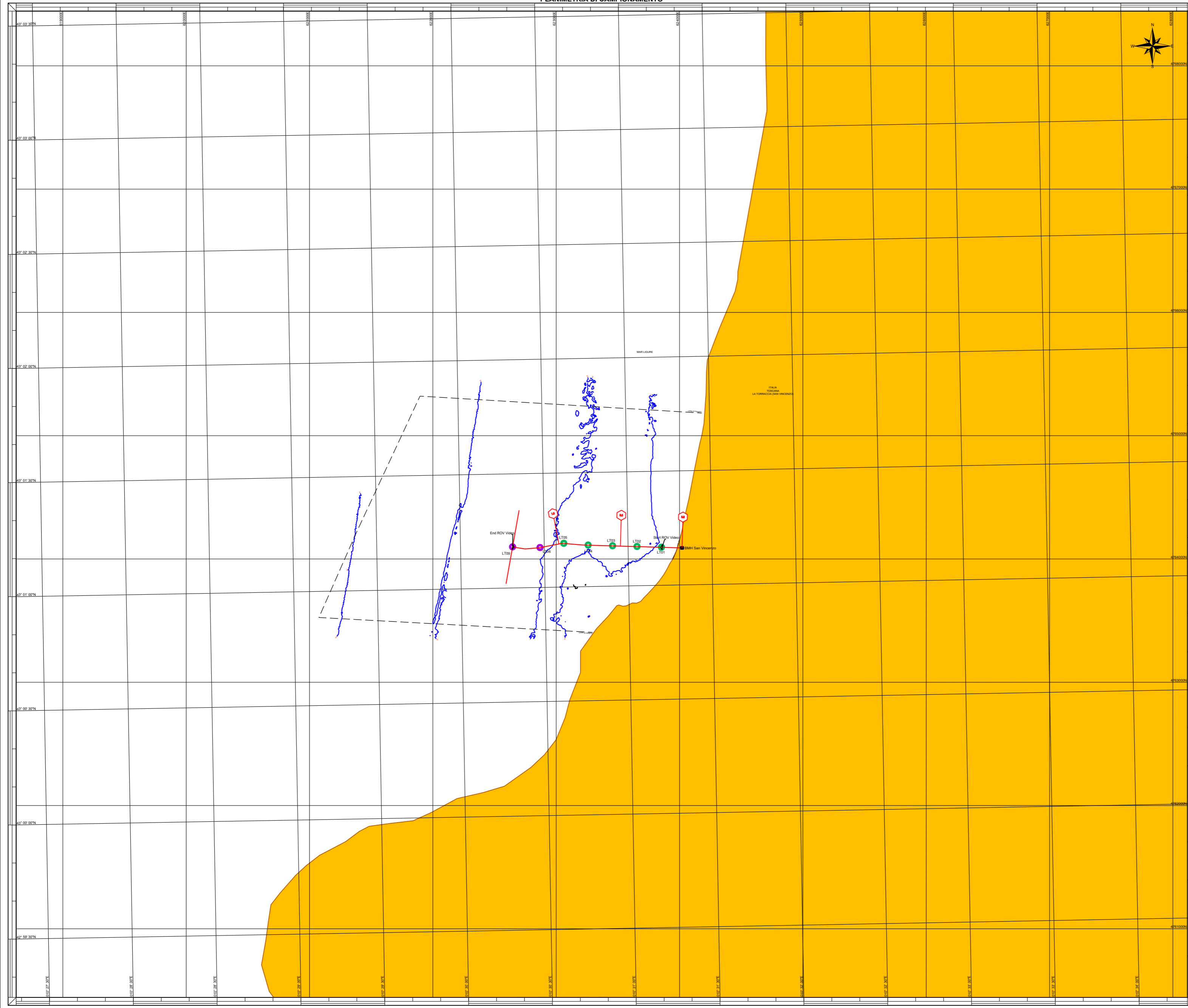
NOTE GENERALI: General notes regarding the coordinate system, datum, and other technical details.

Scale bar and title: KP rotta Nord 53.260 - 61.124. TRUE SCALE 1 : 10003.196432.

POSIZIONE DI QUESTA CARTA: Regional map showing the location of the study area in the Adriatic Sea, near the Italian coast.

Administrative forms: Fields for project name (DVHR1002B00315), scale (1:10000), and other project information.

PLANIMETRIA DI CAMPIONAMENTO



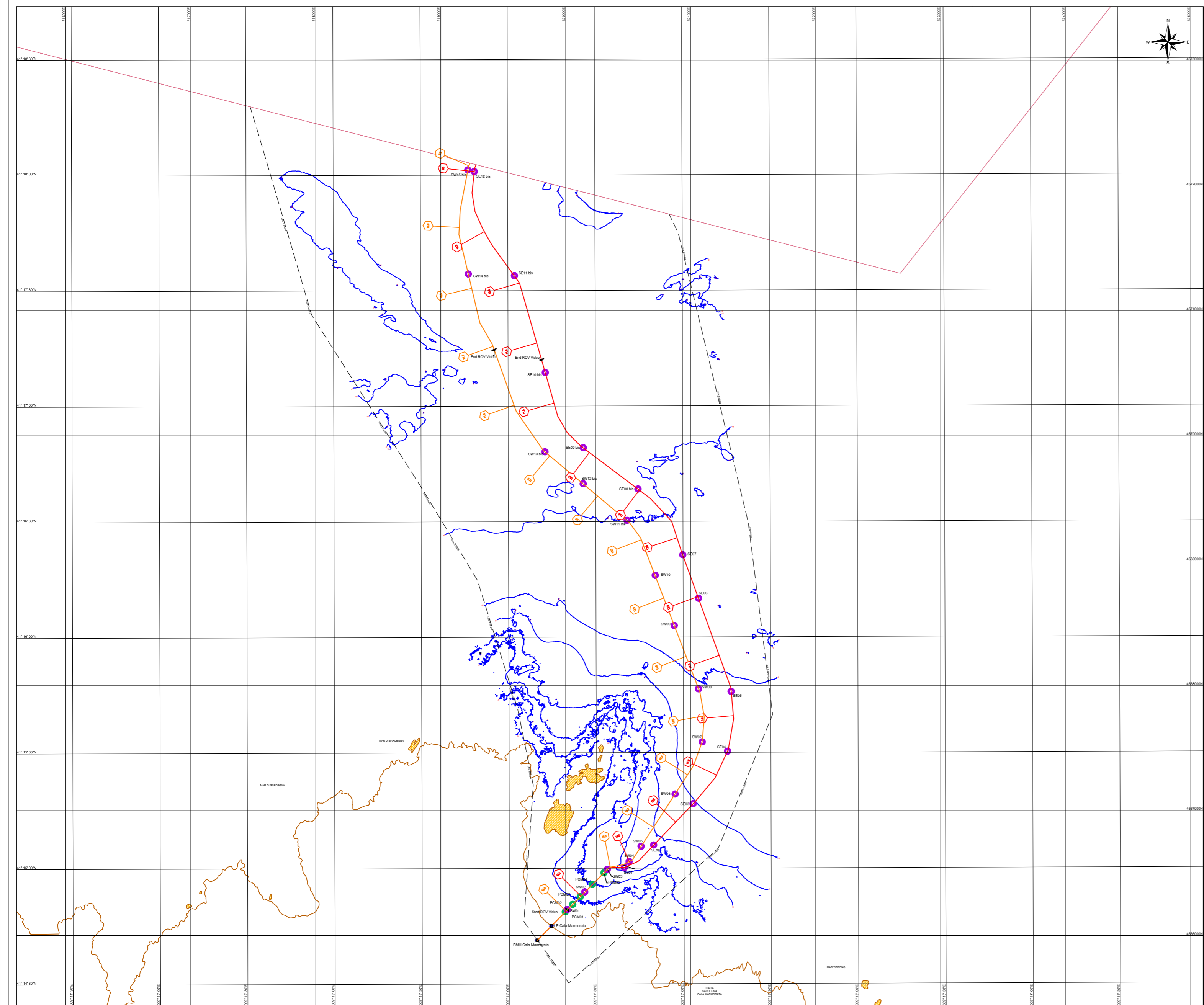
Stazioni per la valutazione dello stato di salute della Posizione oceanica

ID	Coordinate UTM 32 N (m)	Coordinate WGS 84 (GMS)	KP	Prof.	Distanza dalla costa (m)	
	Northing	Eastng				
P001	473883.76	62340.11	42° 53' 39.568" N	10° 30' 27.934" E	0.715 -14	493.3
P002	473729.17	62291.22	42° 53' 34.626" N	10° 30' 22.215" E	0.915 -15	555.9
P003	473781.03	62278.11	42° 53' 34.288" N	10° 30' 14.117" E	-19	681.1
P004	473419.79	62276.59	42° 53' 24.698" N	10° 30' 14.822" E	1.286 -23	840.3
P005	473326.63	62278.85	42° 53' 19.711" N	10° 30' 13.794" E	1.441 -25	993.5
P006	473118.77	62274.93	42° 53' 14.937" N	10° 30' 14.261" E	1.590 -30	1148.7
P007	472415.78	62328.16	42° 53' 50.201" N	10° 30' 36.930" E	0.364 -4	214.3
P008	473883.95	62342.36	42° 53' 39.334" N	10° 30' 45.218" E	0.756 -9	286.8
P009	473264.46	62346.61	42° 53' 32.864" N	10° 30' 45.703" E	0.953 -12	376.9
P004	473348.81	62349.09	42° 53' 36.337" N	10° 30' 45.723" E	1.149 -15	472.9
P005	473284.57	62349.66	42° 53' 19.844" N	10° 30' 45.960" E	1.349 -19	579.4
P006	473303.16	62347.06	42° 53' 12.251" N	10° 30' 46.277" E	1.584 -19	727.7
P007	473263.76	62349.46	42° 53' 04.687" N	10° 30' 46.599" E	1.829 -20	854.6
P008	472581.33	62349.86	42° 54' 57.084" N	10° 30' 46.910" E	2.054 -25	1015.2
LT01	474694.72	62385.07	43° 01' 09.99" N	10° 31' 11.93" E	0.167 -7	127.3
LT02	474610.38	62365.08	43° 01' 10.29" N	10° 31' 03.01" E	0.366 -12	134.5
LT03	474610.07	62347.08	43° 01' 10.59" N	10° 30' 54.45" E	0.564 -12	522.4
LT04	474611.76	62329.86	43° 01' 10.89" N	10° 30' 45.70" E	0.761 -11.5	720.6
LT05	474612.79	62308.63	43° 01' 11.46" N	10° 30' 37.00" E	0.960 -17	918.4
PCM01	4566189.22	519996.22	41° 14' 48.706" N	9° 14' 19.155" E	16.508 -7	156.7
PCM02	456648.39	520055.42	41° 14' 50.635" N	9° 14' 21.719" E	16.425 -9	174.4
PCM03	456608.86	520115.82	41° 14' 52.575" N	9° 14' 24.314" E	16.339 -11	180.5
PCM04	456667.01	520133.89	41° 14' 55.791" N	9° 14' 26.491" E	16.201 -20	195.6
PCM05	456600.99	520055.51	41° 14' 58.788" N	9° 14' 32.485" E	16.069 -25	244.4

Stazioni di campionamento del sedimento e della zoo-bentonia

ID	Coordinate UTM 32 N (m)	Coordinate WGS 84 (GMS)	KP	Prof.	Distanza dalla costa (m)	
	Northing	Eastng				
SN01	472472.83	62332.29	42° 50' 52.115" N	10° 30' 34.512" E	0.284 -3	179.9
SN02	472469.97	623169.55	42° 50' 45.902" N	10° 30' 33.796" E	0.483 -6	336.4
SN03	472360.16	623207.90	42° 50' 42.507" N	10° 30' 32.437" E	0.685 -12	448.7
SN08	472529.07	62229.99	42° 50' 11.310" N	10° 29' 51.952" E	2.162 -37	1311.4
SN09	472313.13	62181.04	42° 50' 16.037" N	10° 29' 33.240" E	2.618 -39	1178.9
SN10	472312.12	62134.92	42° 50' 12.004" N	10° 29' 12.367" E	3.136 -41	1261.6
SN11	472349.51	62096.49	42° 50' 14.639" N	10° 28' 53.439" E	3.156 -43	1444.4
SN12	472348.36	62042.54	42° 50' 27.986" N	10° 28' 31.748" E	4.068 -45	1813.7
SN13	472356.69	62025.45	42° 50' 31.685" N	10° 28' 10.947" E	4.567 -47	2223.1
SN14	472366.81	62049.66	42° 50' 35.530" N	10° 27' 47.00" E	5.027 -50	2624.5
SN15	472380.75	61893.49	42° 50' 39.882" N	10° 27' 25.888" E	5.603 -52	3156.4
SN16	472407.95	61807.14	42° 50' 52.891" N	10° 26' 40.053" E	6.546 -60	3930.9
SN17	472413.27	61635.37	42° 50' 57.958" N	10° 26' 13.527" E	6.988 -69	4481.3
SN18	472418.29	61451.14	42° 50' 54.229" N	10° 24' 13.389" E	10.179 -77	5558.46
SN19	472425.36	61257.85	42° 50' 58.075" N	10° 22' 46.547" E	12.136 -87	7176.2
SN20	472426.50	61058.02	42° 50' 58.208" N	10° 21' 18.802" E	14.158 -100	8096.9
SN21	472349.85	60875.87	42° 50' 34.706" N	10° 19' 57.687" E	16.161 -107	8730.9
SN22	472330.98	60684.32	42° 50' 17.000" N	10° 18' 34.004" E	18.151 -110	8720.2
SN23	472323.41	60484.87	42° 50' 14.607" N	10° 17' 47.873" E	20.151 -113	10389.9
SN24	472296.15	60288.31	42° 50' 20.990" N	10° 15' 36.529" E	22.105 -115	10244.5
SN25	472260.56	60027.64	42° 50' 17.810" N	10° 14' 07.604" E	24.192 -116	10393.4
SN26	472289.84	59926.01	42° 50' 10.095" N	10° 12' 58.567" E	25.806 -114	10684.3
SN27	472111.71	59741.29	42° 50' 21.080" N	10° 11' 32.764" E	28.395 -116	10204.0
SN28	472075.23	59571.64	42° 50' 24.295" N	10° 10' 20.248" E	30.912 -114	8734.5
SN29	472048.89	59417.68	42° 50' 45.228" N	10° 09' 11.426" E	32.892 -113	7880.7
SN30	472065.25	59250.43	42° 50' 42.525" N	10° 07' 02.07" E	34.899 -110	6774.4
SN31	472010.73	59078.96	42° 51' 43.714" N	10° 06' 36.093" E	36.951 -110	6394.3
SN32	472050.78	58905.29	42° 51' 11.175" N	10° 05' 23.093" E	38.888 -99	6112.2
SN33	472050.13	58741.49	42° 50' 52.274" N	10° 04' 10.087" E	40.861 -99	6208.2
SN34	472442.85	58578.14	42° 49' 47.085" N	10° 02' 58.403" E	43.147 -86	6239.1
SN35	472048.74	58489.84	42° 48' 56.290" N	10° 02' 18.638" E	44.957 -87	6154.2
SN35 bis	472026.28	58417.79	42° 48' 02.808" N	10° 01' 05.671" E	46.807 -86	6264.9
SN36	472761.10	58307.58	42° 47' 19.668" N	10° 00' 54.505" E	48.652 -85	7204.4
SN37	472620.52	58229.23	42° 46' 20.281" N	10° 00' 12.575" E	50.638 -86	7831.7
SN38	472415.79	58100.04	42° 45' 49.976" N	9° 59' 34.281" E	52.729 -74	8645.7
SN39	472320.81	58019.15	42° 44' 14.616" N	9° 58' 14.400" E	54.172 -61	9960.9
SN40	472071.18	58039.31	42° 43' 29.161" N	9° 58' 52.629" E	56.095 -95	10975.9
SN41	472013.60	57848.03	42° 43' 11.024" N	9° 57' 27.865" E	58.754 -183	12975.2
SS00	472427.84	62319.51	42° 50' 12.000" N	10° 30' 30.000" E	0.000 -0	174.2
SS01	472406.89	62320.09	42° 50' 46.300" N	10° 30' 40.440" E	0.502 -5	226.1
SS02	472391.31	62341.01	42° 50' 46.281" N	10° 30' 45.190" E	0.72 -8	274.6
SS07	472311.03	62340.78	42° 50' 48.000" N	10° 30' 46.000" E	0.164 -17	1515.2
SS08	472133.47	62306.99	42° 50' 29.212" N	10° 30' 26.920" E	3.131 -39	1956.8
SS09	472151.81	62261.64	42° 50' 24.888" N	10° 30' 30.991" E	3.594 -39	2284.4
SS10	472101.01	62208.01	42° 50' 12.280" N	10° 30' 40.000" E	4.154 -38	2511.2
SS11	472178.01	62183.62	42° 50' 30.538" N	10° 29' 22.018" E	4.655 -39	2604.5
SS12	472107.57	62118.61	42° 50' 14.187" N	10° 29' 01.501" E	5.121 -40	2744.9
SS13	472176.36	62061.61	42° 50' 14.368" N	10° 28' 39.613" E	5.618 -43	2958.8
SS14	472125.28	61957.95	42° 50' 35.478" N	10° 28' 08.613" E	6.138 -48	3234.2
SS15	472193.80	61805.65	42° 50' 34.345" N	10° 27' 10.777" E	7.672 -51	4254.1
SS16	472161.84	61670.45	42° 50' 34.960" N	10° 25' 48.489" E	9.708 -66	4742.1
SS17	472050.58	61468.74	42° 50' 49.694" N	10° 24' 14.634" E	11.752 -72	3346.6
SS18	472025.99	61274.23	42° 50' 56.488" N	10° 22' 53.637" E	13.691 -78	3775.3
SS19	472013.25	61028.36	42° 50' 52.200" N	10° 21' 26.869" E	15.657 -91	5087.8
SS20	472013.67	60891.32	42° 50' 52.200" N	10° 19' 44.444" E	17.486 -103	6748.6
SS21	472045.99	60698.57	42° 50' 56.804" N	10° 18' 35.466" E	19.567 -109	8518.7
SS22	472015.41	60494.45	42° 50' 48.344" N	10° 17' 06.016" E	21.667 -109	7957.5
SS23	472059.19	60293.70	42° 50' 48.000" N	10° 15' 47.000" E	23.647 -111	7238.3
SS24	472078.58	60094.37	42° 50' 35.933" N	10° 14' 09.394" E	25.754 -113	7348.8
SS25	472068.40	59897.20	42° 50' 32.222" N	10° 12' 45.705" E	27.718 -113	8133.6
SS26	472060.20	59718.59	42° 50' 30.317" N	10° 11' 46.516" E	29.708 -112	8670.9
SS27	472752.33	59549.33	42° 52' 38.303" N	10° 10' 06.910" E	31.7 -112	7425.8
SS28	472602.12	59389.63	42° 52' 08.284" N	10° 08' 49.220" E	33.691 -112	6702.1
SS29	472070.72	59194.60	42° 51' 38.848" N	10° 07' 33.107" E	35.644 -109	5861.1
SS30	472421.31	59023.99	42° 50' 15.169" N	10° 06' 19.999" E	37.626 -100	5756.5
SS31	472424.80	58825.63	42° 50' 46.961" N	10° 05' 00.216" E	39.542 -97	5704.7
SS32	472430.35	58720.22	42° 50' 07.326" N	10° 04' 02.017" E	41.345 -89	5670.5
SS33	472401.81	58614.52	42° 49' 08.869" N	10° 03' 18.021" E	43.242 -89	5411.4
SS34	472091.08	58519.31	42° 48' 47.301" N	10° 02' 31.303" E	44.877 -89	5786.3
SS35	472069.26	58430.85	42° 47' 58.297" N	10° 01' 44.055" E	46.316 -87	6050.7
SS36	472132.51	58360.55	42° 47' 01.670" N	10° 01' 17.750" E	48.288 -86	6657.4
SS37	472082.59	58246.64	42° 46' 13.084" N	10° 00' 36.743" E	50.116 -87	7479.5
SS37 bis	472417.40	58261.30	42° 48' 19.197" N	10° 01' 02.907" E	51.915 -85	7012.3
SS38	472320.21	58155.73	42° 46' 29.903" N	10° 01' 01.130" E	53.708 -82	7287.3
SS39	472105.35	58126.42	42° 43' 38.684" N	10° 00' 20.158" E	55.742 -81	9031.9
SS40	472064.81	58062.07	42° 43' 01.263" N	9° 59' 19.562" E	57.667 -92	11020.9
SS41	472091.03	57966.77	42° 42' 30.737" N	9° 57' 55.585" E	59.841 -100	11515.9
LT06	472697.17	62284.56	43° 01' 10.469" N	10° 30' 58.440" E	1.35 -23	781.2
LT09	472697.14	62246.26	43° 01' 10.772" N	10° 30' 18.632" E	1.806 -25	1106.6
SW01	456626.69	52001.32	41° 14' 48.272" N	9° 14' 18.810" E	16.484 -7	182.9
SW02	456648.20	52002.10	41° 14' 48.847" N	9° 14' 18.870" E	16.285 -14	184.8
SW03	456628.48	52032.72	41° 14' 59.673" N	9° 14' 33.682" E	16.03 -25	264.8
SW04	456691.26	52056.64	41° 15' 01.694" N	9° 14' 41.187" E	15.841 -32	341.7
SW05	456613.41	52063.93	41° 15' 01.699" N	9° 14' 45.291" E	15.682 -36	483.1
SW06	456731.48	52075.10	41° 15' 19.181" N	9° 14' 57.033" E	15.183 -46	975.3
SW07	456749.10	52109.79	41° 15' 32.709" N	9° 15' 06.408" E	14.709 -56	1313.8
SW08	456793.58	52166.13	41° 15' 46.471" N	9° 15' 15.170" E	14.279 -59	1410.3
SW09	456848.					

PLANIMETRIA DI CAMPIONAMENTO



Stazioni per la valutazione dello stato di salute della Posizione oceanica

ID	Coordinate UTM 32 N (m)	Coordinate WGS 84 (GMS)	XP (m)	Prof. (m)	Distanza dalla costa (m)	
PON01	4735883.11	623040.11	42° 55' 39.568" N	10° 30' 27.934" E	0.715 -14	439.3
PON02	4735729.17	622912.22	42° 55' 34.626" N	10° 30' 22.214" E	0.915 -15	555.9
PON03	4735718.02	622781.51	42° 55' 34.282" N	10° 30' 14.117" E	1.117 -19	681.1
PON04	4735419.79	622736.59	42° 55' 24.698" N	10° 30' 14.822" E	1.286 -23	840.3
PON05	4735263.63	622718.85	42° 55' 19.711" N	10° 30' 14.378" E	1.441 -25	993.5
PON06	4735131.77	622714.93	42° 55' 14.937" N	10° 30' 14.282" E	1.590 -30	1146.7
PD501	475215.78	62328.16	42° 55' 50.201" N	10° 30' 36.930" E	0.364 -4	214.3
PD502	473883.95	623432.36	42° 55' 39.334" N	10° 30' 45.218" E	0.756 -9	286.8
PD503	473584.48	623446.61	42° 55' 32.861" N	10° 30' 45.703" E	0.953 -12	376.9
PD504	4735484.31	623459.69	42° 55' 28.319" N	10° 30' 45.723" E	1.149 -15	472.9
PD505	473284.57	623459.66	42° 55' 19.844" N	10° 30' 45.960" E	1.349 -19	579.4
PD506	473530.16	623471.06	42° 55' 12.291" N	10° 30' 46.277" E	1.584 -19	727.7
PD507	473261.74	623482.46	42° 55' 04.697" N	10° 30' 46.599" E	1.829 -20	854.6
PD508	475281.33	623493.86	42° 54' 57.084" N	10° 30' 46.910" E	2.054 -25	1015.2
LT01	474694.72	623851.07	42° 01' 09.99" N	10° 31' 11.53" E	0.167 -7	127.3
LT02	474610.38	623855.08	42° 01' 10.29" N	10° 31' 03.10" E	0.366 -12	174.5
LT03	474610.07	623457.08	42° 01' 10.59" N	10° 30' 54.45" E	0.564 -12	522.4
LT04	474611.76	623298.86	42° 01' 10.89" N	10° 30' 45.70" E	0.763 -11.5	720.6
LT05	474612.79	623061.63	42° 01' 11.46" N	10° 30' 37.07" E	0.960 -12	918.4
PCM01	4566189.22	519996.22	41° 14' 48.706" N	9° 14' 19.155" E	16.508 -7	156.7
PCM02	456648.39	520055.42	41° 14' 50.619" N	9° 14' 21.710" E	16.425 -9	174.4
PCM03	456608.86	520115.82	41° 14' 52.575" N	9° 14' 24.314" E	16.339 -11	180.5
PCM04	456667.92	520132.89	41° 14' 55.792" N	9° 14' 26.491" E	16.201 -20	195.6
PCM05	456600.99	520055.51	41° 14' 58.788" N	9° 14' 32.485" E	16.069 -25	244.4

Stazioni per la valutazione dello stato di salute della Posizione oceanica

ID	Coordinate UTM 32 N (m)	Coordinate WGS 84 (GMS)	XP (m)	Prof. (m)	Distanza dalla costa (m)	
SN01	475273.83	623382.29	42° 55' 52.113" N	10° 30' 34.512" E	0.284 -3	179.9
SN02	475408.97	623169.55	42° 55' 45.902" N	10° 30' 33.796" E	0.483 -6	336.4
SN03	475266.21	623169.55	42° 55' 45.902" N	10° 30' 33.796" E	0.483 -6	336.4
SN08	475299.07	622239.99	42° 55' 11.310" N	10° 29' 51.923" E	2.162 -37	1311.4
SN09	475313.16	621813.04	42° 55' 16.037" N	10° 29' 33.240" E	2.618 -39	1178.9
SN10	475312.12	621348.73	42° 55' 12.004" N	10° 29' 12.367" E	3.136 -41	1283.6
SN11	475319.52	620906.49	42° 55' 24.840" N	10° 28' 53.479" E	3.566 -43	1444.4
SN12	475348.06	620412.54	42° 55' 27.980" N	10° 28' 31.743" E	4.068 -45	1813.7
SN13	475358.69	620225.45	42° 55' 25.683" N	10° 28' 10.344" E	4.567 -47	2223.1
SN14	475359.76	619478.61	42° 55' 22.706" N	10° 27' 28.706" E	5.027 -50	2624.5
SN15	475380.75	618913.49	42° 55' 39.382" N	10° 27' 25.888" E	5.403 -52	3156.4
SN16	475420.79	618071.40	42° 55' 52.891" N	10° 26' 49.053" E	6.546 -60	3939.9
SN17	475420.79	618071.40	42° 55' 52.891" N	10° 26' 49.053" E	6.546 -60	3939.9
SN18	475418.29	614541.14	42° 55' 54.229" N	10° 24' 13.389" E	10.179 -77	5558.46
SN19	475425.78	612571.85	42° 55' 58.075" N	10° 22' 58.544" E	12.136 -87	7176.2
SN20	475425.78	612571.85	42° 55' 58.075" N	10° 22' 58.544" E	12.136 -87	7176.2
SN21	475349.85	608755.87	42° 55' 34.706" N	10° 19' 57.687" E	16.161 -109	8730.9
SN22	475358.99	60884.32	42° 55' 17.803" N	10° 18' 18.004" E	18.151 -110	8720.2
SN23	475320.43	60884.32	42° 55' 17.803" N	10° 18' 18.004" E	18.151 -110	8720.2
SN24	475296.15	60838.31	42° 55' 20.590" N	10° 15' 36.529" E	22.105 -115	10244.5
SN25	475295.06	60827.64	42° 55' 17.803" N	10° 14' 07.604" E	24.192 -116	10393.4
SN26	475289.84	597266.01	42° 55' 10.095" N	10° 12' 58.568" E	25.806 -114	10684.3
SN27	475111.71	59741.29	42° 54' 21.083" N	10° 11' 34.764" E	28.395 -116	10204.4
SN28	474975.23	595721.64	42° 53' 24.294" N	10° 10' 20.248" E	30.912 -114	8734.5
SN29	474848.59	59417.68	42° 52' 45.228" N	10° 09' 11.426" E	32.892 -113	7880.7
SN30	474869.51	59250.43	42° 52' 45.228" N	10° 09' 11.426" E	32.892 -113	7880.7
SN31	474610.73	59078.96	42° 51' 43.742" N	10° 06' 36.093" E	36.95 -110	6394.3
SN32	474507.82	58905.29	42° 51' 11.175" N	10° 05' 13.093" E	38.888 -99	6112.2
SN33	474260.61	58741.49	42° 50' 52.902" N	10° 03' 40.861" E	40.861 -96	6208.2
SN34	474242.85	58785.14	42° 49' 47.085" N	10° 02' 58.403" E	43.147 -86	6239.1
SN35	474084.74	58489.84	42° 48' 56.290" N	10° 02' 18.634" E	44.957 -87	6154.2
SN35 bis	473928.06	58417.19	42° 48' 56.290" N	10° 02' 18.634" E	44.957 -87	6154.2
SN36	473761.10	58307.58	42° 47' 19.668" N	10° 00' 54.502" E	48.652 -85	7204.4
SN37	473620.52	58229.23	42° 46' 20.281" N	10° 00' 21.571" E	50.638 -86	7831.7
SN38	473452.73	58170.04	42° 45' 49.976" N	9° 59' 54.281" E	52.725 -74	8945.7
SN39	473205.91	58091.15	42° 44' 14.401" N	9° 58' 48.800" E	54.172 -61	9969.9
SN40	473078.18	58039.31	42° 43' 29.164" N	9° 58' 52.629" E	56.095 -59	10975.9
SN41	473018.60	57944.03	42° 43' 11.024" N	9° 57' 27.865" E	58.754 -183	12975.2
SN50	474427.84	621197.53	42° 55' 12.004" N	10° 30' 37.867" E	0.287 -3	179.9
SW01	475406.89	62320.09	42° 55' 46.300" N	10° 30' 40.440" E	0.502 -5	226.1
SW02	475391.31	623431.01	42° 55' 48.287" N	10° 30' 45.195" E	0.72 -8	274.6
SW07	475202.61	623402.26	42° 55' 42.009" N	10° 30' 46.194" E	0.914 -12	316.2
SW08	475173.47	623056.99	42° 54' 29.212" N	10° 30' 26.962" E	1.131 -19	395.8
SW09	475168.31	622813.64	42° 54' 24.888" N	10° 30' 39.911" E	1.394 -19	428.4
SW10	475160.12	622801.61	42° 54' 24.888" N	10° 30' 39.911" E	1.394 -19	428.4
SW11	475178.01	621583.62	42° 54' 30.538" N	10° 29' 22.018" E	1.605 -39	2604.5
SW12	475170.57	621118.61	42° 54' 30.187" N	10° 29' 01.501" E	1.821 -40	2744.9
SW13	475176.26	62081.61	42° 54' 34.368" N	10° 28' 39.612" E	2.038 -43	2958.8
SW14	475165.28	620517.95	42° 54' 35.478" N	10° 28' 08.610" E	2.338 -48	3234.2
SW15	475179.89	61805.65	42° 54' 34.368" N	10° 27' 10.771" E	2.672 -51	4254.1
SW16	475162.84	61670.45	42° 54' 34.368" N	10° 25' 48.981" E	3.708 -66	5723.2
SW17	475058.58	614688.74	42° 54' 08.694" N	10° 24' 16.804" E	4.752 -72	7334.6
SW18	475025.99	612784.23	42° 53' 56.438" N	10° 22' 53.637" E	5.691 -78	8775.3
SW19	475016.25	610828.36	42° 53' 52.201" N	10° 21' 28.869" E	6.567 -91	10078.8
SW20	475016.25	610828.36	42° 53' 52.201" N	10° 21' 28.869" E	6.567 -91	10078.8
SW21	474945.99	60938.57	42° 53' 56.880" N	10° 18' 35.460" E	19.567 -109	8518.7
SW22	475015.41	60841.45	42° 53' 48.343" N	10° 17' 09.010" E	21.667 -109	7857.5
SW23	474999.62	60703.79	42° 53' 48.343" N	10° 15' 57.999" E	23.67 -111	7238.3
SW24	474970.58	60614.37	42° 53' 35.933" N	10° 14' 09.394" E	25.754 -113	7345.8
SW25	474968.08	59879.20	42° 53' 32.229" N	10° 12' 45.705" E	27.718 -113	8133.6
SW26	474880.82	59778.59	42° 53' 48.343" N	10° 11' 46.630" E	29.708 -113	8671.9
SW27	474782.33	59649.33	42° 52' 38.303" N	10° 10' 06.910" E	31.7 -112	7425.8
SW28	474690.12	59389.63	42° 52' 08.284" N	10° 08' 49.220" E	33.691 -112	6702.1
SW29	474690.12	59389.63	42° 52' 08.284" N	10° 08' 49.220" E	33.691 -112	6702.1
SW30	474690.12	59389.63	42° 52' 08.284" N	10° 08' 49.220" E	33.691 -112	6702.1
SW31	474624.80	58825.63	42° 50' 46.961" N	10° 05' 00.216" E	39.542 -97	5704.7
SW32	474360.30	58722.22	42° 50' 07.326" N	10° 04' 02.017" E	43.345 -89	5670.5
SW33	474301.81	58616.52	42° 49' 09.869" N	10° 03' 18.011" E	43.942 -89	5641.4
SW34	474091.08	58519.31	42° 48' 47.301" N	10° 02' 31.304" E	44.877 -89	5786.3
SW35	473998.09	58430.85	42° 47' 58.297" N	10° 01' 54.051" E	46.316 -87	6050.7
SW36	473713.54	58360.55	42° 47' 01.679" N	10° 01' 17.561" E	48.288 -86	6657.4
SW37	473580.59	58266.64	42° 46' 13.084" N	10° 00' 36.743" E	50.116 -87	7479.5
SW37 bis	473417.40	58261.30	42° 45' 19.197" N	10° 01' 02.907" E	51.915 -85	7012.3
SW38	473280.21	58155.13	42° 44' 36.903" N	10° 01' 31.101" E	53.708 -82	7287.3
SW39	473105.35	58126.42	42° 43' 38.684" N	10° 00' 20.158" E	55.742 -81	8031.9
SW40	472964.81	58062.07	42° 43' 01.263" N	9° 59' 19.562" E	57.662 -82	11029.9
SW41	472901.03	57966.77	42° 42' 30.737" N	9° 57' 55.587" E	59.841 -100	11513.9
LT06	474607.17	623864.56	42° 01' 10.469" N	10° 30' 49.440" E	1.35 -23	781.2
LT09	474607.14	62366.26	42° 01' 10.772" N	10° 30' 18.632" E	1.806 -25	1106.6
SW01	456626.09	52001.32	41° 14' 48.272" N	9° 14' 18.810" E	16.484 -7	182.9
SW02	456648.20	52002.10	41° 14' 54.847" N	9° 14' 18.810" E	16.285 -14	184.8
SW03	456628.48	52032.72	41° 14' 59.677" N	9° 14' 33.682" E	16.03 -25	264.8
SW04	456691.16	52056.64	41° 15' 01.694" N	9° 14' 41.187" E	15.841 -32	341.7
SW05	456613.41	52063.93	41° 15' 01.694" N	9° 14' 45.791" E	15.682 -36	483.1
SW06	456713.48	52075.10	41° 15' 01.694" N	9° 14' 57.037" E	15.183 -46	975.3
SW07	456749.10	52109.79	41° 15' 01.694" N	9° 15' 06.408" E	14.709 -56	1333.8
SW08	456793.58	52166.12	41° 15' 01.694" N	9° 15' 15.170" E	14.179 -59	1410.3
SW09	456848.02	52067.86	41° 15' 02.941" N	9° 14' 56.825" E	13.755 -62	149