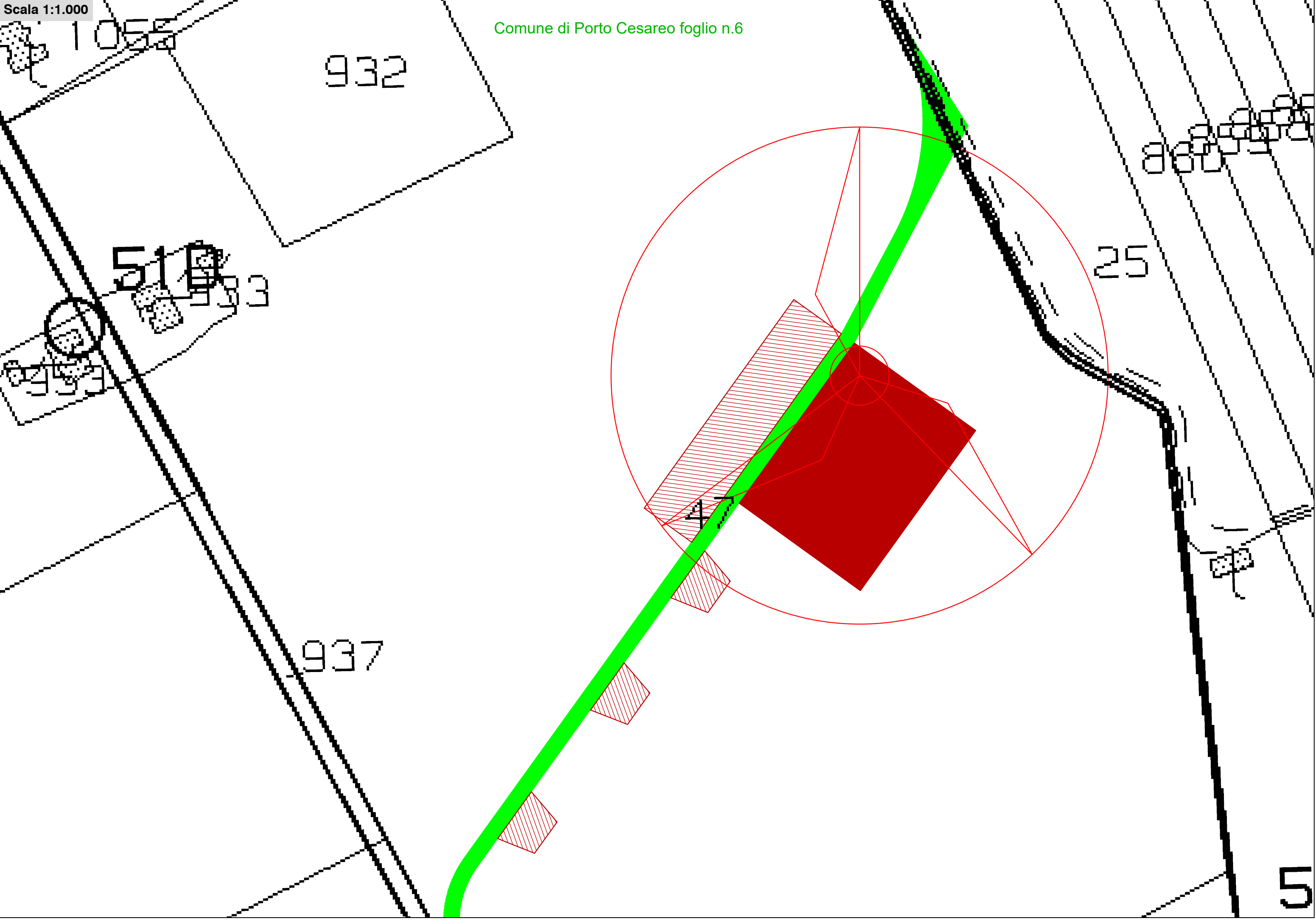


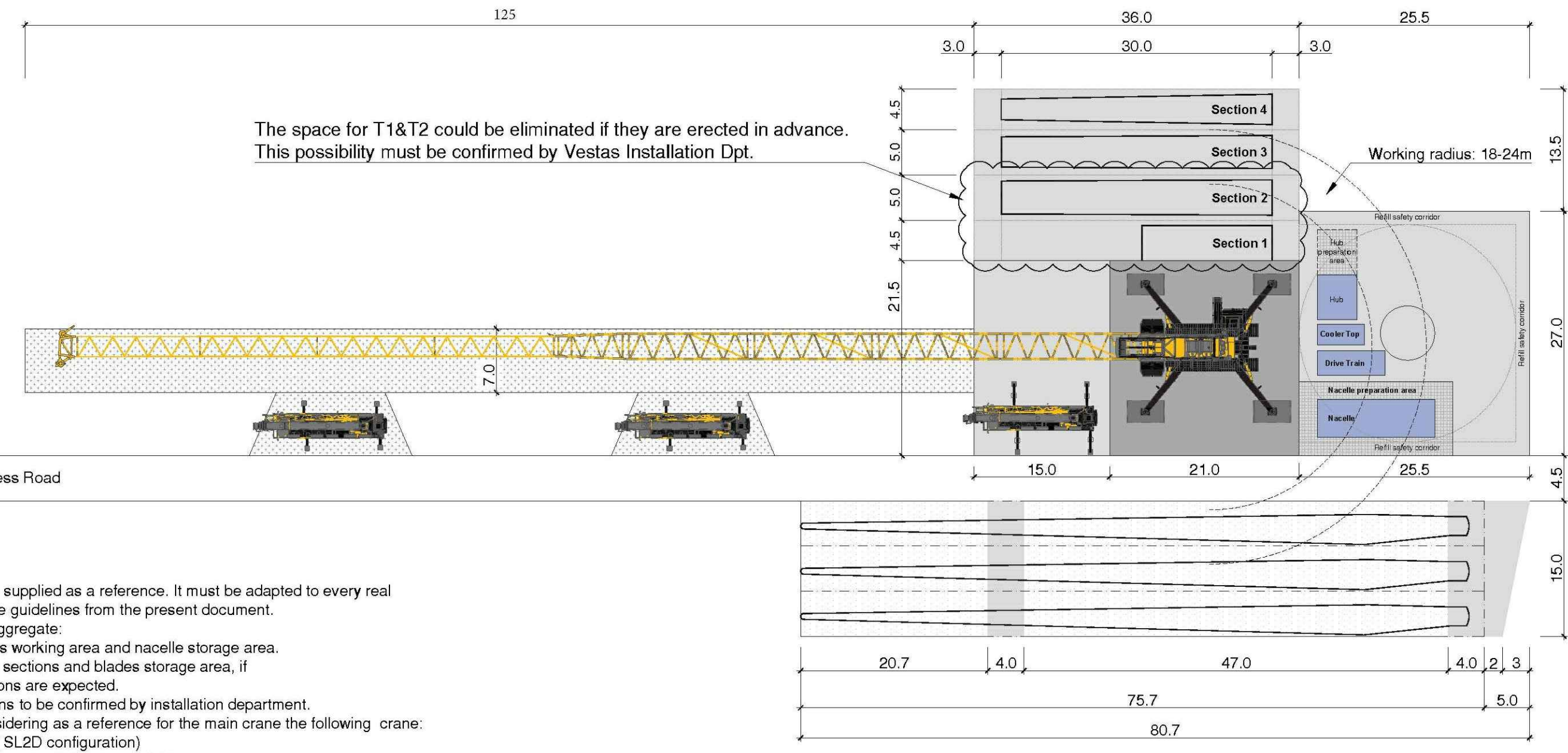
Scala 1:1.000

Comune di Porto Cesareo foglio n.6



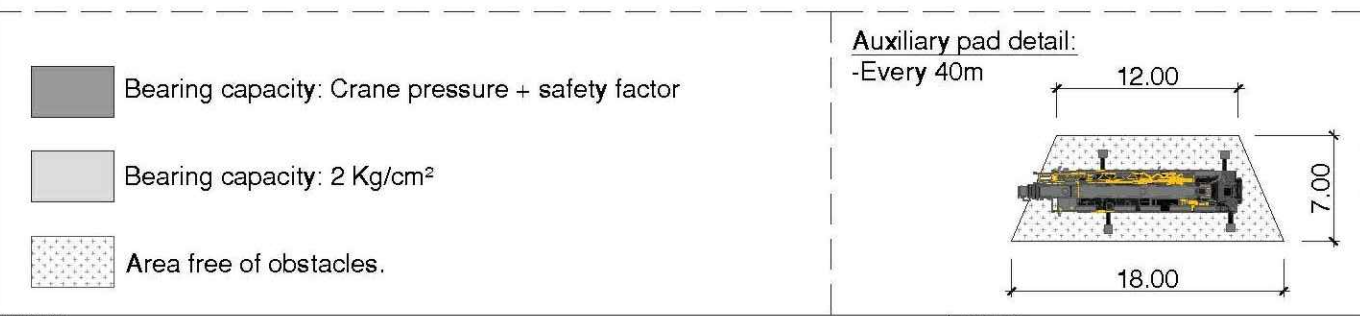
Legenda

- Aerogeneratori di progetto
- Piazzola montaggio gru
- Area stoccaggio pale
- Piazzole ausiliarie appoggio gru
- Viabilità di progetto



The space for T1&T2 could be eliminated if they are erected in advance.
This possibility must be confirmed by Vestas Installation Dpt.

- Notes:
- (1) The present drawing is supplied as a reference. It must be adapted to every real project according to the guidelines from the present document.
 - (2) Pavement of graded aggregate:
 - Mandatory on cranes working area and nacelle storage area.
 - Necessary on tower sections and blades storage area, if slippery work conditions are expected.
 - (3) Tower final dimensions to be confirmed by installation department.
 - (4) Crane pad design considering as a reference for the main crane the following crane: Liebherr LR 1600-2 W (SL2D configuration)
Raise capacity of 97 tons up to 138 meters height.
 - (5) All units are in meters.



PROPRONENTE
REPOWER Renewable Spa
 Via Lavaredo, 44
 30174 Mestre (VE)
 PROJECT MANAGER : Dott. Giuseppe Caricato

PROGETTAZIONE

Tenproject Srl - via De Gasperi 61
 52018 S. Giorgio del Sannio (BN)
 t +39 0824 337144 - f +39 0824 337155
 tenproject.it - info@tenproject.it

N° COMMESSA **1459** **NUOVO PARCO EOLICO "VEGLIE"**
 PROVINCE DI LECCE - TARANTO - BRINDISI
 COMUNI DI SALICE SALENTINO - NARDO' - PORTO CESAREO - AVETRANA - PESCHIERA

PROGETTO DEFINITIVO PER AUTORIZZAZIONE CODICE ELABORATO **6.5**
 PIAZZOLA TIPO NOME FILE 1459-PD_A_6.5_TAV_00

00	05/2021	PRIMA EMISSIONE	PPF	NF	NF
REV. I	DATA	DESCRIZIONE REVISIONE	REDATTO	VERIFICA	APPROVAZIONE

Cartiglio - Rev. 00 COPYRIGHT - TUTTI I DIRITTI SONO RISERVATI A NORMA DI LEGGE