

**LEGENDA**

- AEROGENERATORI
- ELETTRODOTTO INTERRATO INTERNO AL PARCO EOLICO
- ELETTRODOTTO INTERRATO ESTERNO AL PARCO EOLICO
- ELETTRODOTTO INTERRATO AT
- STAZIONE ELETTRICA TERNA ESISTENTE
- SOTTOSTAZIONE ELETTRICA DI TRASFORMAZIONE DI PROGETTO
- LIMITI COMUNALI

**AREE NON IDONEE FER**

- BENI CULTURALI CON BUFFER DI 100 M
- SEGNALAZIONE CARTA DEI BENI CON BUFFER DI 100 M
- IMMOBILI E AREE DICHIARATE DI NOTEVOLE INTERESSE PUBBLICO
- LAME E GRAVINE
- PUTT/P - ATE B

01	16/03/2021	MODIFICA CAVO AT	BFP PIERRI L.	BFP MIGLIONICO M. BISCOTTI G.B.
00	18/12/2020	EMISSIONE	BFP PIERRI L.	BFP MIGLIONICO M. BISCOTTI G.B.
REV.	DATE	DESCRIPTION	PREPARED	CHECKED
			APPROVED	

Via Napoli, 36352 - 70132 Bari - Italy  
Tel: +39 0805000000 - Fax: +39 0805000000  
www.bfp.it  
Autorevolezza Ministero di Agricoltura, Pesca e Alimentazione  
UNI EN ISO 9001:2015  
UNI EN ISO 14001:2015  
UNI ISO 45001:2018

**PROJECT: SALICE VEGLIE**

FILE NAME: GRE.EEC.R.26.IT.W.15000.00.015.01 INQUADRAMENTO SU AREE NON IDONEE

CLASSIFICATION:	FORMAT:	SCALE:	PLOT SCALE:	SHEET:
	A1	1:25.000		1 di 4

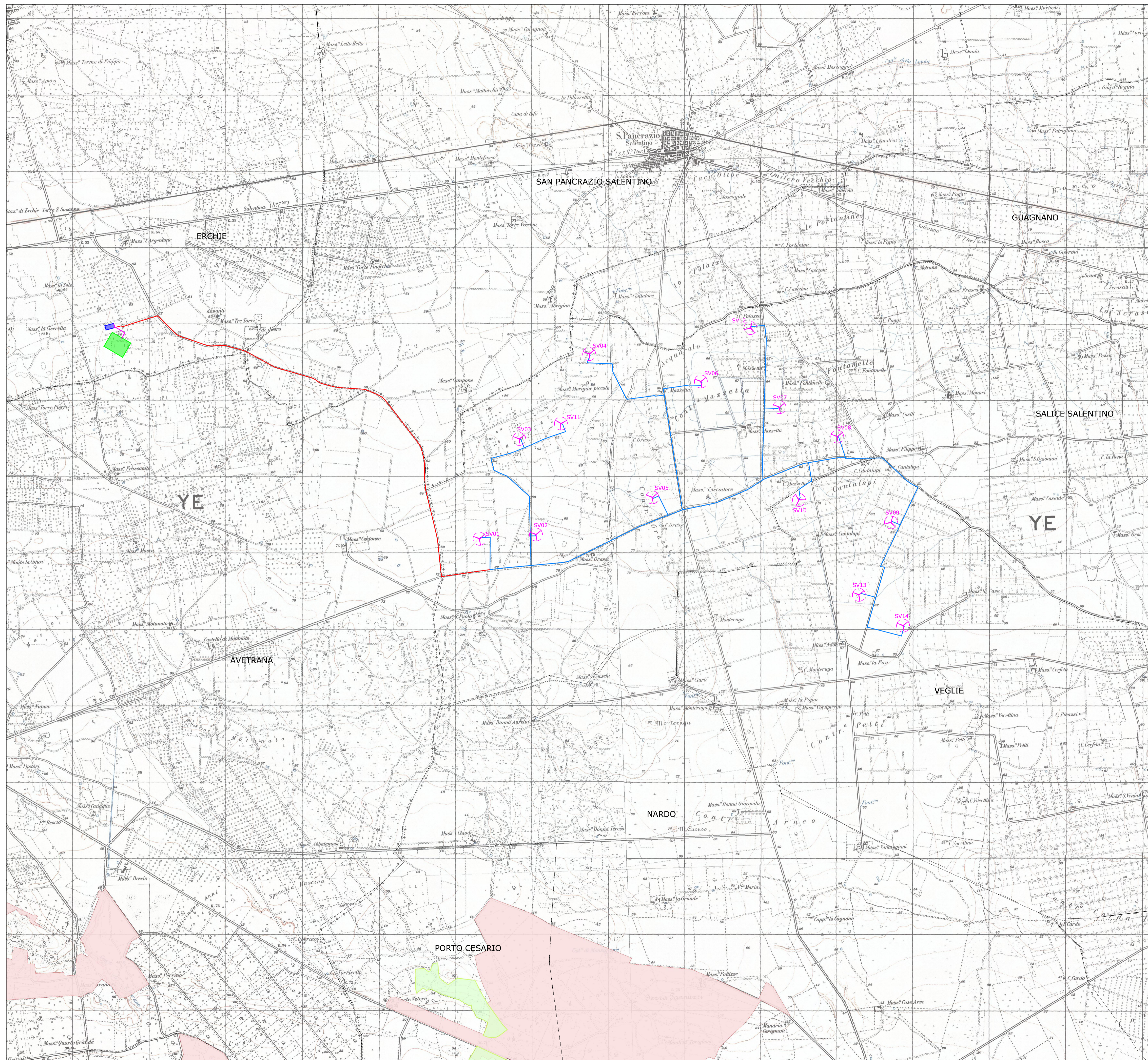
UTILIZATION SCOPE: STRALCIO PLANIMETRICO AREA DI PROGETTO  
CON LE PERIMETRAZIONI AREE NON IDONEE FER  
R.R. 24/2010

VALIDATED BY: **Tamma**


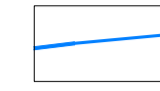
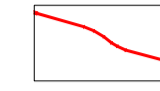
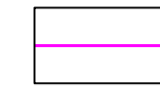
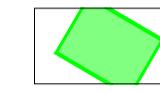
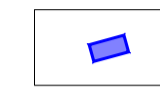
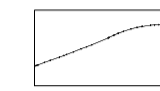
VERIFIED BY: **Tedeschi**

COLLABORATORS: **Ciccarelli**



GRE CODE									
GROUP	FUNCTION	TYPE	ISSUER	COUNTRY	TEC.	PLANT	SYSTEM	PROGRESSIVE	REVISION
GRE	EEC	R26	I	TW	15000	0000	01	501	




**LEGENDA**

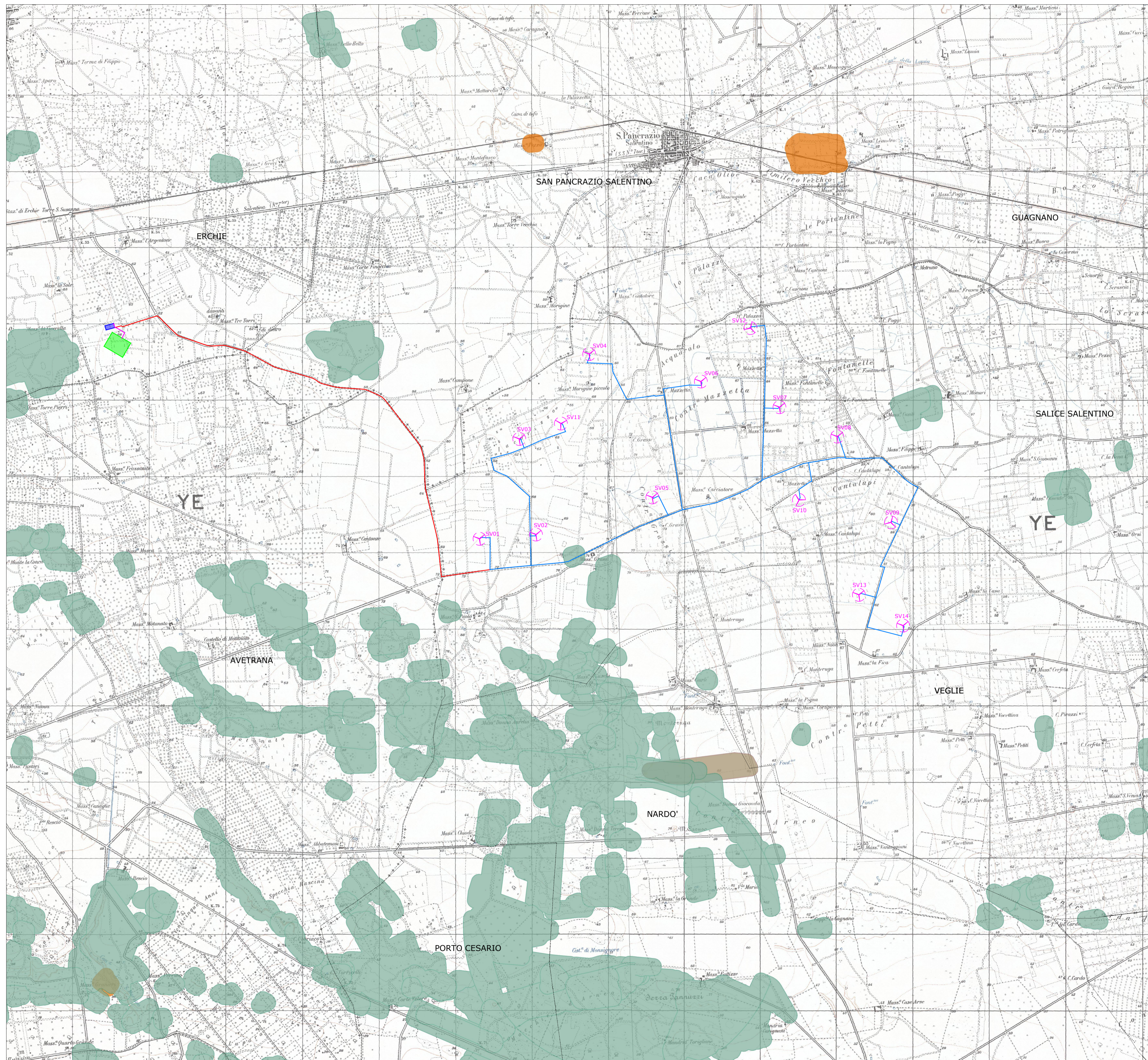
-  AEROGENERATORI
-  ELETTRODOTTO INTERRATO INTERNO AL PARCO EOLICO
-  ELETTRODOTTO INTERRATO ESTERNO AL PARCO EOLICO
-  ELETTRODOTTO INTERRATO AT
-  STAZIONE ELETTRICA TERNA ESISTENTE
-  SOTTOSTAZIONE ELETTRICA DI TRASFORMAZIONE DI PROGETTO
-  LIMITI COMUNALI

**AREE NON IDONEE FER - Aree protette**






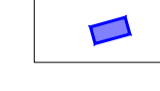
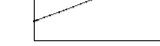
-  ZONE SIC E ZPS
-  AREE PROTETTE NAZIONALI-REGIONALI

01	16/03/2021	MODIFICA CAVO AT	BFP	BFP	BFP
			PIERRI I.	MIGLIONICO M.	BISCOTTI G.B.
00	18/12/2020	EMISSIONE	BFP	BFP	BFP
			PIERRI I.	MIGLIONICO M.	BISCOTTI G.B.
REV.	DATE	DESCRIPTION	PREPARED	CHECKED	APPROVED
			<b>SALICE VEGLIE</b>		
FILE NAME: GRE.EEC.R.26.IT.W.15000.00.015.011 INQUADRAMENTO SU AREE NON IDONEE					
CLASSIFICATION:		FORMAT:	SCALE:	PLOT SCALE:	SHEET:
		A1	1:25.000		2 di 4
UTILIZATION SCOPE:			TITLE:		
			<b>STRALCIO PLANIMETRICO AREA DI PROGETTO CON LE PERIMETRAZIONI AREE NON IDONEE FER R.R. 24/2010</b>		
Engineering & Construction <b>GRE VALIDATION</b>			GRE CODE		
VALIDATED BY: Tamma			GRE CODE		
VERIFIED BY: Todeschi			GROUP FUNCTION TYPE ISSUER COUNTRY TEC. PLANT SYSTEM PROGRESSIVE REVISION		
COLLABORATORS: Ciccarelli			<b>GRE EEC R 26 I TW 15000 00 015 011</b>		




This document is property of Enel Green Power S.p.A. It is strictly forbidden to reproduce this document, in whole or in part, and to provide to others any related information without the previous written consent by Enel Green Power S.p.A.





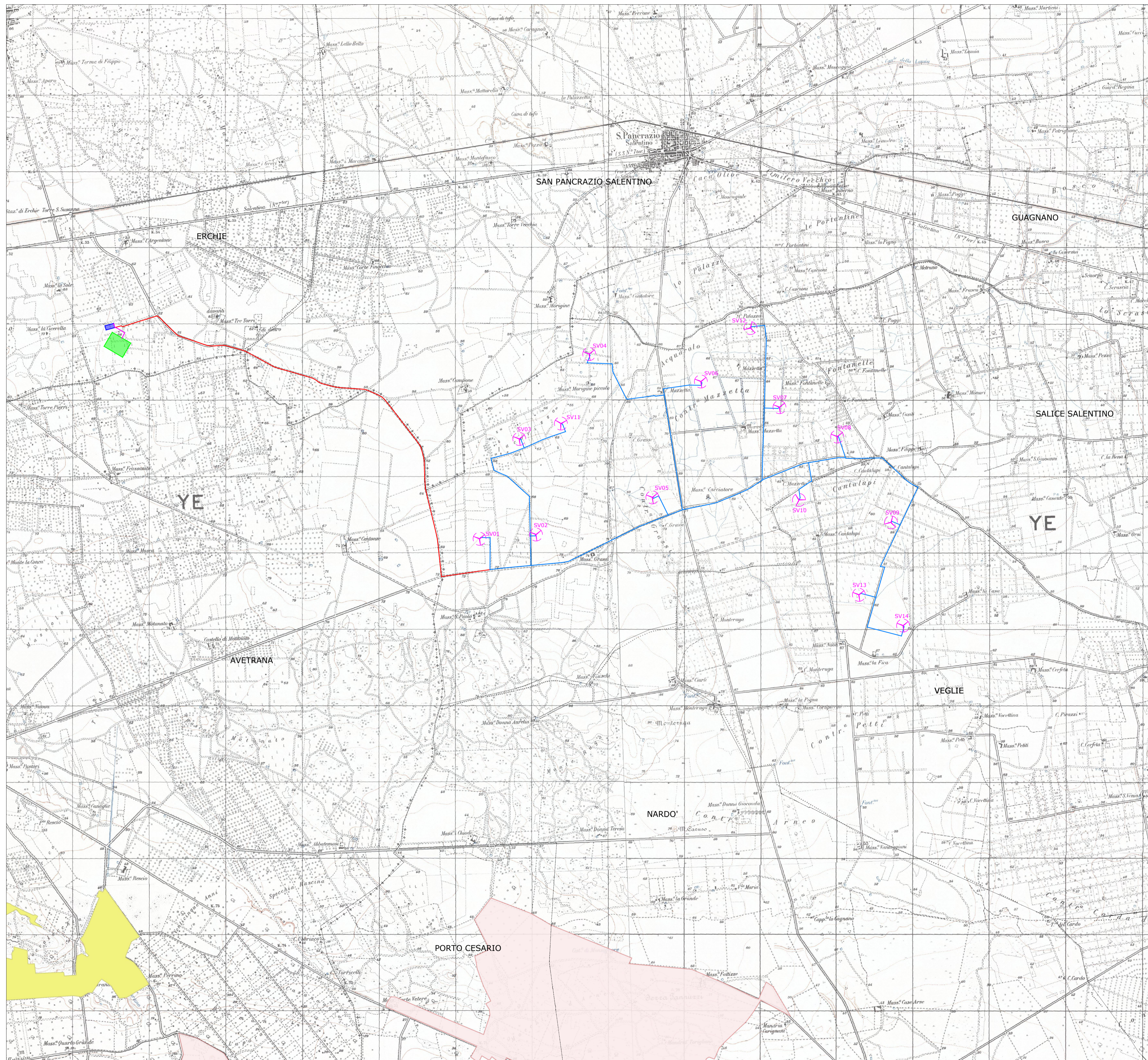
**LEGENDA**

-  AEROGENERATORI
-  ELETTRODOTTO INTERRATO INTERNO AL PARCO EOLICO
-  ELETTRODOTTO INTERRATO ESTERNO AL PARCO EOLICO
-  ELETTRODOTTO INTERRATO AT
-  STAZIONE ELETTRICA TERNA ESISTENTE
-  SOTTOSTAZIONE ELETTRICA DI TRASFORMAZIONE DI PROGETTO
-  LIMITI COMUNALI

**AREE NON IDONEE FER - Aree tutelate per legge (art. 142 D.Lgs. 42/04)**

-  BOSCHI CON BUFFER DI 100 M
-  TRATTURI CON BUFFER DI 100 M
-  ZONE ARCHEOLOGICHE CON BUFFER DI 100 M

01	16/03/2021	MODIFICA CAVO AT	BFP	BFP	BFP
			PIERRI I.	MIGLIONICO M.	BISCOTTI G.B.
00	18/12/2020	EMISSIONE	BFP	BFP	BFP
			PIERRI I.	MIGLIONICO M.	BISCOTTI G.B.
REV.	DATE	DESCRIPTION	PREPARED	CHECKED	APPROVED
			<b>SALICE VEGLIE</b>		
			PROJECT: <b>SALICE VEGLIE</b> FILE NAME: <b>GRE.EEC.R.26.IT.W.15000.00.015.01 INQUADRAMENTO SU AREE NON IDONEE</b>		
CLASSIFICATION:		FORMAT:	SCALE:	PLOT SCALE:	SHEET:
		<b>A1</b>	<b>1:25.000</b>		<b>3 di 4</b>
UTILIZATION SCOPE:			TITLE:		
			<b>STRALCIO PLANIMETRICO AREA DI PROGETTO CON LE PERIMETRAZIONI AREE NON IDONEE FER R.R. 24/2010</b>		
VALIDATED BY: <b>Tamma</b>			GRE CODE		
VERIFIED BY: <b>Tedeschi</b>			GROUP:	FUNCTION:	TYPE:
COLLABORATORS: <b>Ciccarelli</b>			<b>GRE</b>	<b>EEC</b>	<b>R26</b>
			<b>I</b>	<b>TW</b>	<b>150000001501</b>
This document is property of Enel Green Power S.p.A. It is strictly forbidden to reproduce this document, in whole or in part, and to provide to others any related information without the previous written consent by Enel Green Power S.p.A.					



**LEGENDA**

- AEROGENERATORI
- ELETTRODOTTO INTERRATO INTERNO AL PARCO EOLICO
- ELETTRODOTTO INTERRATO ESTERNO AL PARCO EOLICO
- ELETTRODOTTO INTERRATO AT
- STAZIONE ELETTRICA TERNA ESISTENTE
- SOTTOSTAZIONE ELETTRICA DI TRASFORMAZIONE DI PROGETTO
- LIMITI COMUNALI

**AREE NON IDONEE FER - Altre aree ai fini della conservazione della biodiversità**

- SISTEMA DI NATURALITA'
- NUCLEI NATURALI ISOLATI

01	16/03/2021	MODIFICA CAVO AT	BFP	BFP	BFP
			PIERRI I.	MIGLIONICO M.	BISCOTTI G.B.
00	18/12/2020	EMISSIONE	BFP	BFP	BFP
			PIERRI I.	MIGLIONICO M.	BISCOTTI G.B.
REV.	DATE	DESCRIPTION	PREPARED	CHECKED	APPROVED

		<b>PROJECT: SALICE VEGLIE</b>			
FILE NAME: GRE.EEC.R.26.IT.W.15000.00.015.01 INQUADRAMENTO SU AREE NON IDONEE					
CLASSIFICATION:	FORMAT:	SCALE:	PLOT SCALE:	SHEET:	
	A1	1:25.000		4 di 4	
UTILIZATION SCOPE:			TITLE:		
			STRALCIO PLANIMETRICO AREA DI PROGETTO CON LE PERIMETRAZIONI AREE NON IDONEE FER R.R. 24/2010		
Engineering & Construction <b>GRE VALIDATION</b>		GRE CODE			
VALIDATED BY:	Tamma				
VERIFIED BY:	Tedeschi				
COLLABORATORS:	Ciccarelli				
GROUP: GRE FUNCTION: EEC TYPE: R26 ISSUER: IT COUNTRY: W TEC: 15000 PLANT: 00000 SYSTEM: 0000 PROGRESSIVE: 01 REVISION: 501					

This document is property of Enel Green Power S.p.A. It is strictly forbidden to reproduce this document, in whole or in part, and to provide to others any related information without the previous written consent by Enel Green Power S.p.A.