



REGIONE MOLISE



COMUNE DI RICCIA



COMUNE DI  
CERCEMAGGIORE



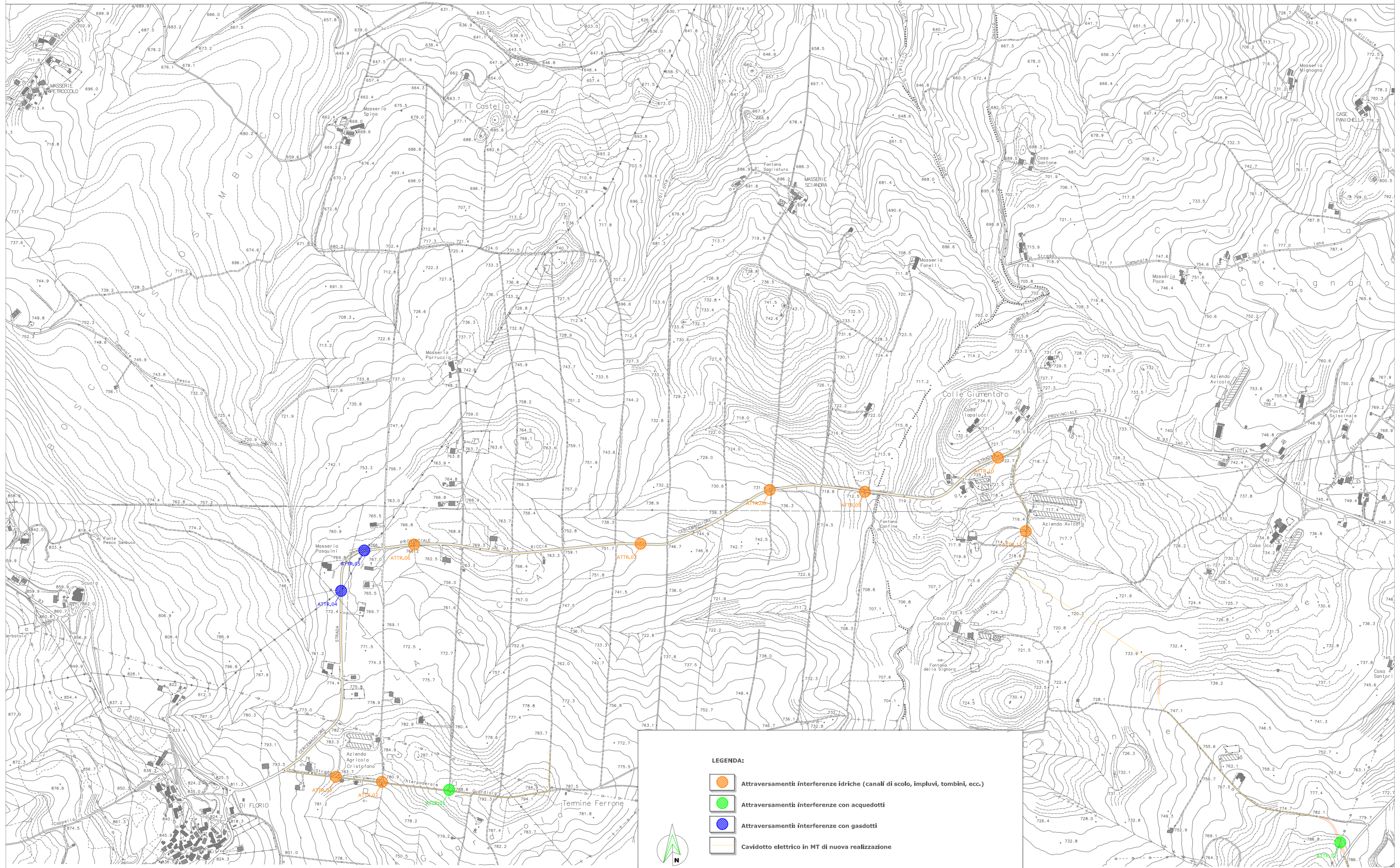
PROVINCIA DI  
CAMPOBASSO

# Progetto definitivo per la realizzazione di un parco eolico da 39,2 MW nel Comune di Riccia (CB) con opere di connessione nel Comune di Cercemaggiore (CB)



Proponente	 <p><b>New green energy s.r.l.</b> Via Diocleziano, 107 cap 80125 Napoli Tel:081-195 66613</p>				
Progettazione	 <p><i>Viale Michelangelo, 71</i> 80129 Napoli TEL.081 579 7998 mail: tecnico.inse@gmail.com</p> <p>Amm. Francesco Di Maso Ing. Nicola Galdiero</p> <p>Collaboratori: Geol. V.E.Iervolino Dott. A. Ianiro Archeol. A. Vella Ing. V. Triunfo Arch. C. Gaudiero Dott.ssa M. Mauro Ing. E. Fama</p>				
Elaborato	<p>Nome Elaborato:</p> <h2 style="text-align: center;">TAVOLA DEGLI ATTRAVERSAMENTI</h2>				
					
00	Giugno 2021	PRIMA EMISSIONE	INSE s.r.l.	INSE s.r.l.	INSE s.r.l.
Rev.	Data	Oggetto della revisione	Elaborazione	Verifica	Approvazione
Scala:	1:2000				
Formato:	A3		Codice Pratica	S216	
			Codice Elaborato	HS216-OC20-D	

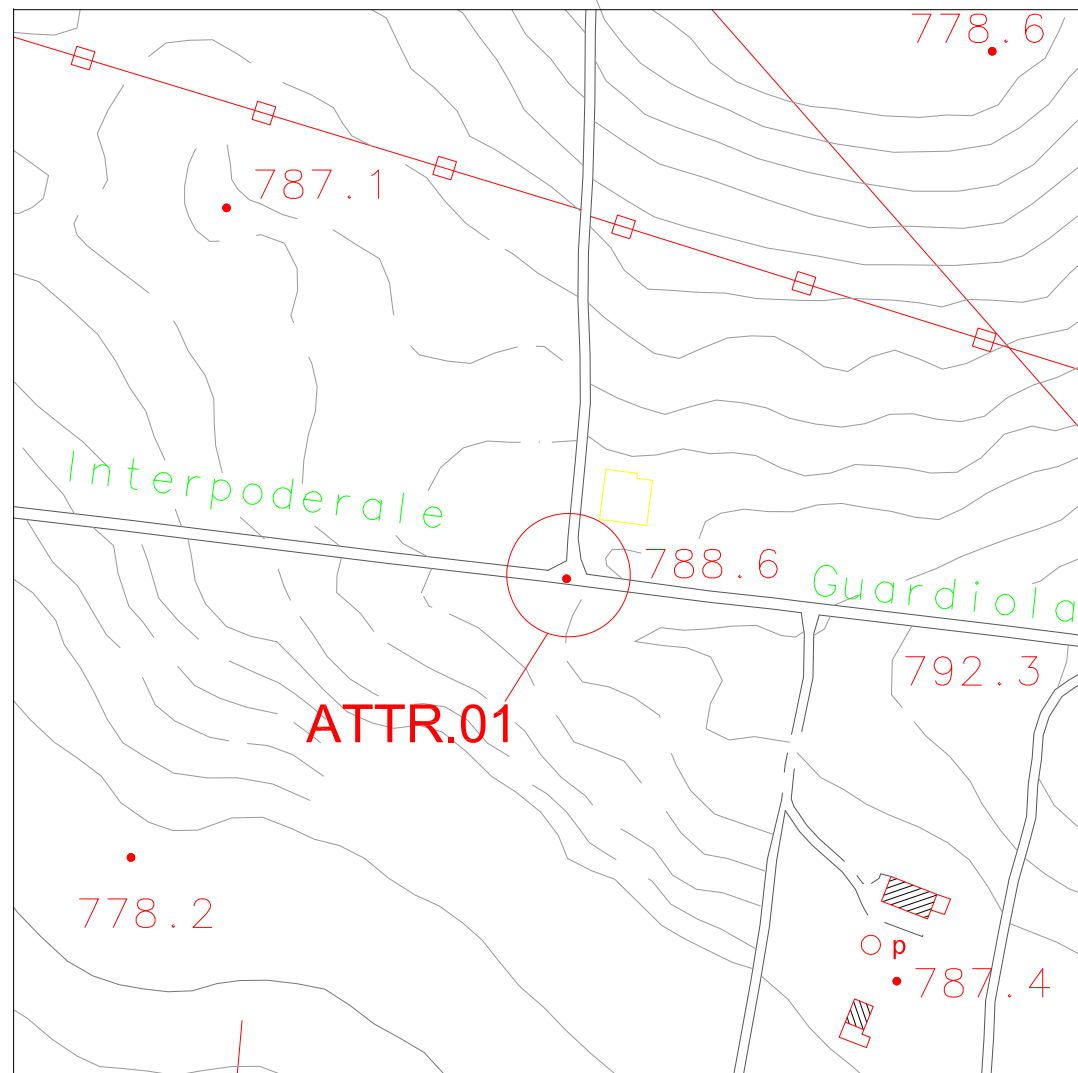
# GRAFICO DI INQUADRAMENTO DEGLI ATTRAVERSAMENTI RILEVATI



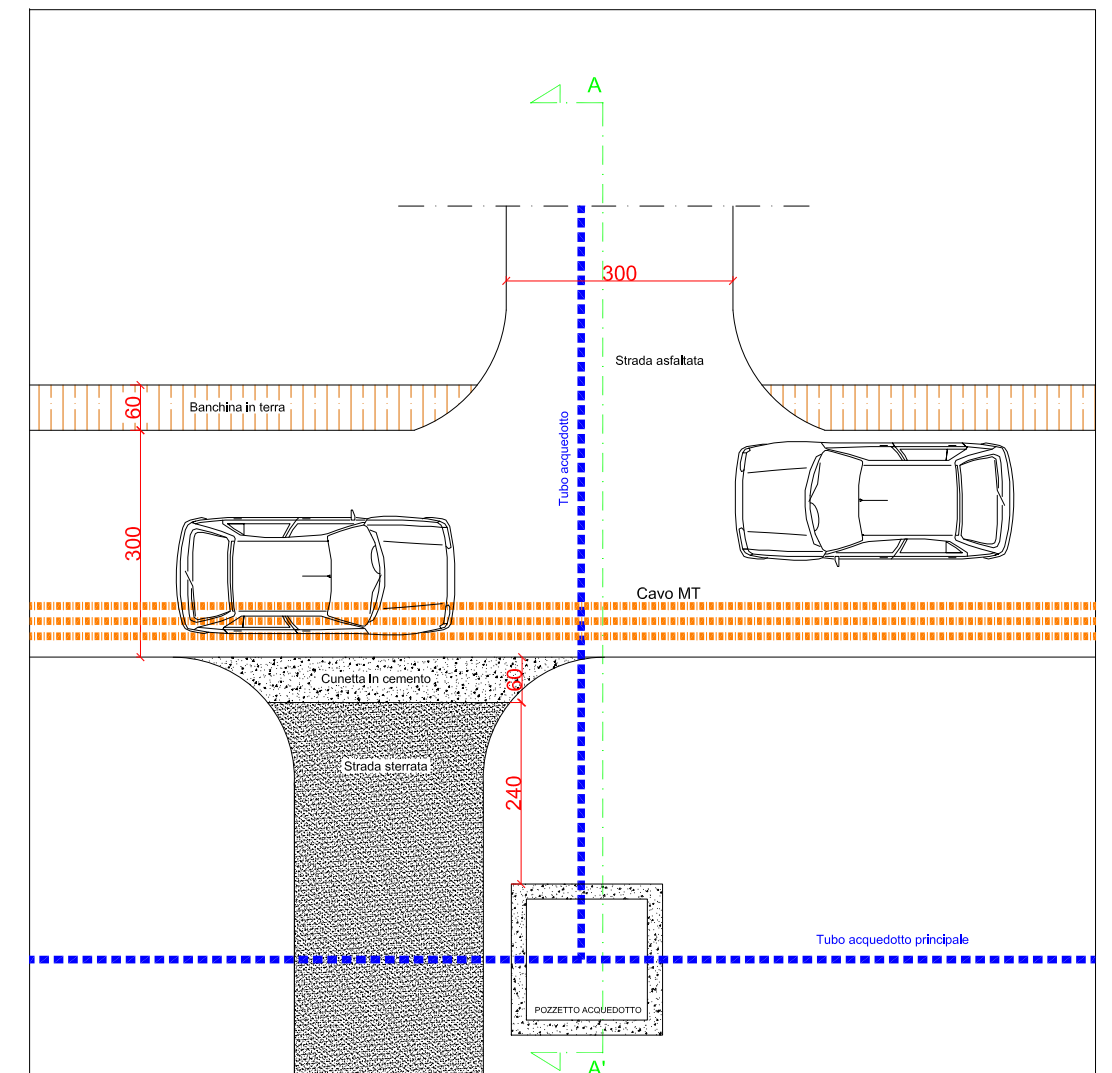
# ATTRAVERSAMENTO 01

UTM WGS84 E 481176 N 4588842

INQUADRAMENTO CRT 1:2000



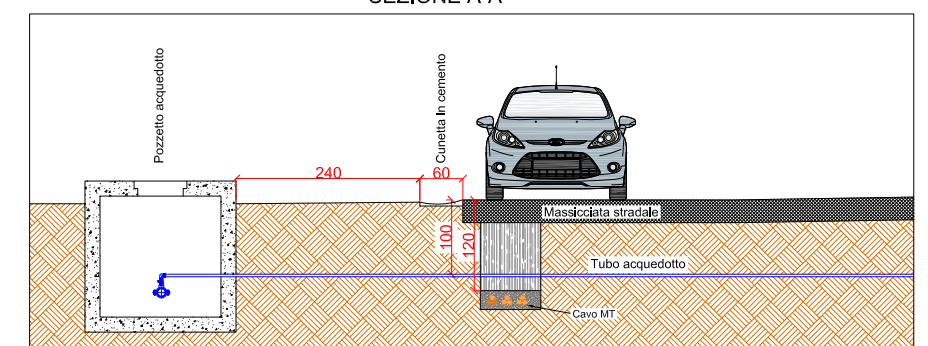
PIANTA



FOTO



SEZIONE A-A'



# ATTRAVERSAMENTO 02

UTM WGS84 E 480977 N 4588865

INQUADRAMENTO CRT 1:2000

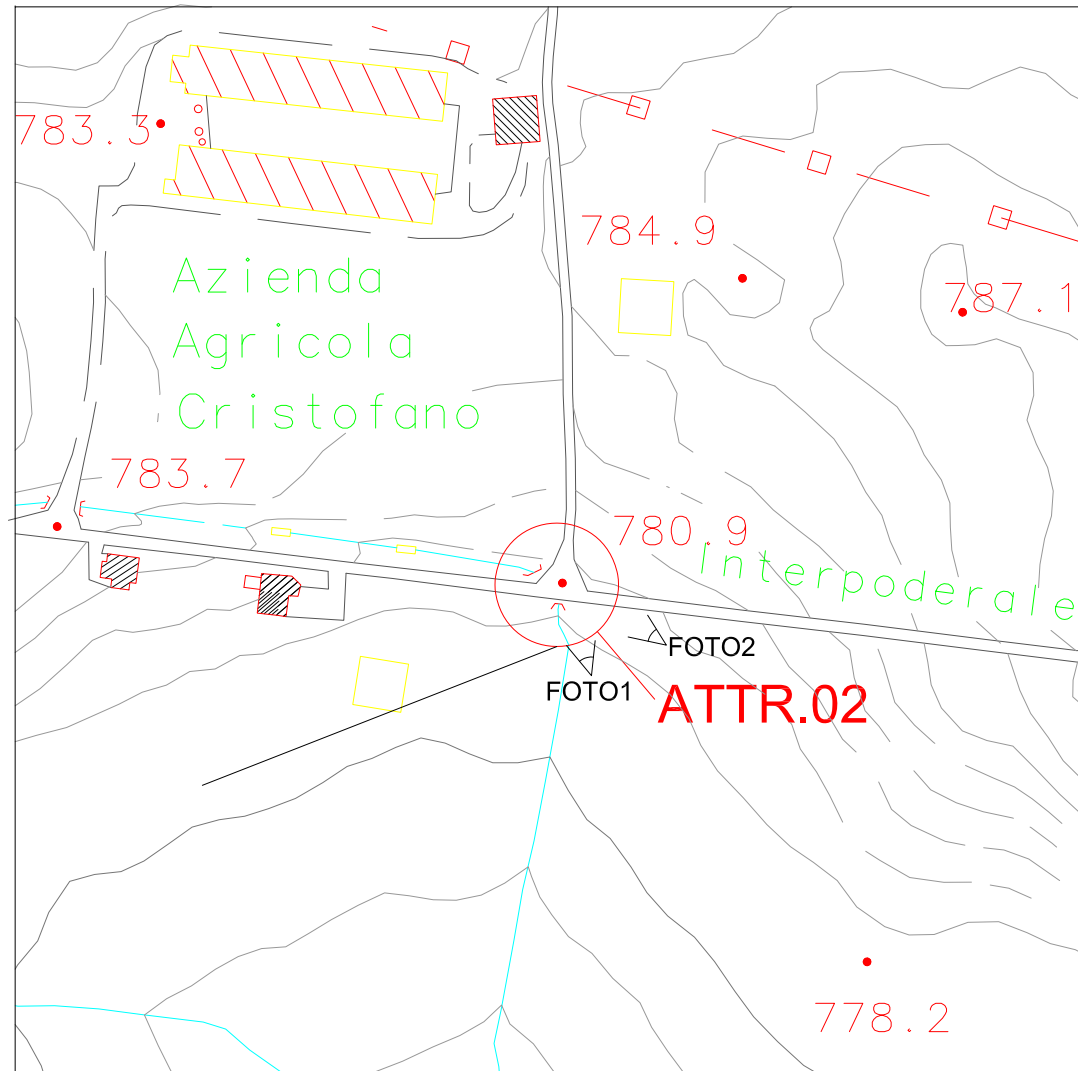


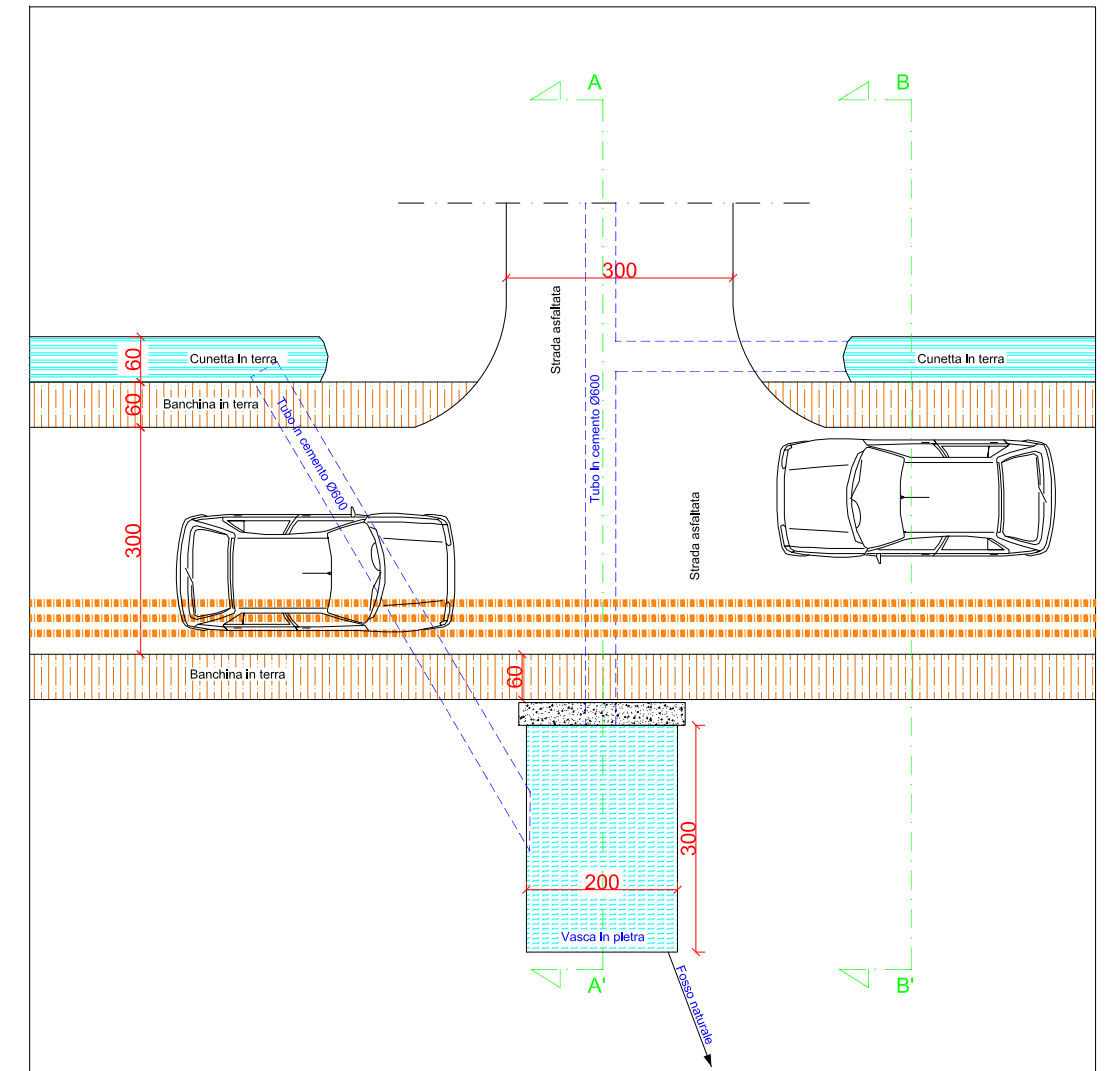
FOTO1



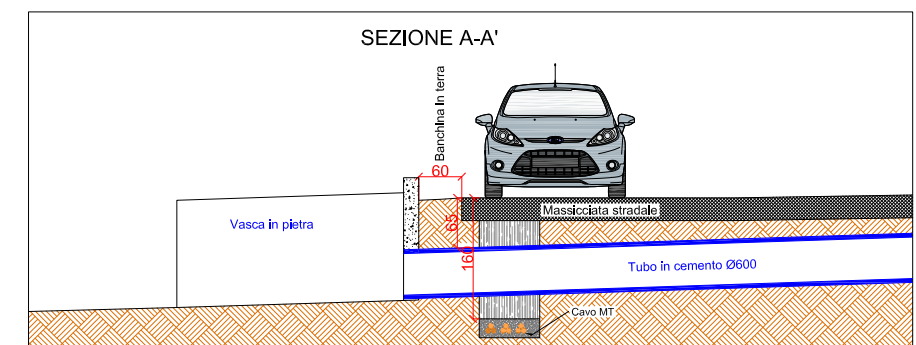
FOTO2



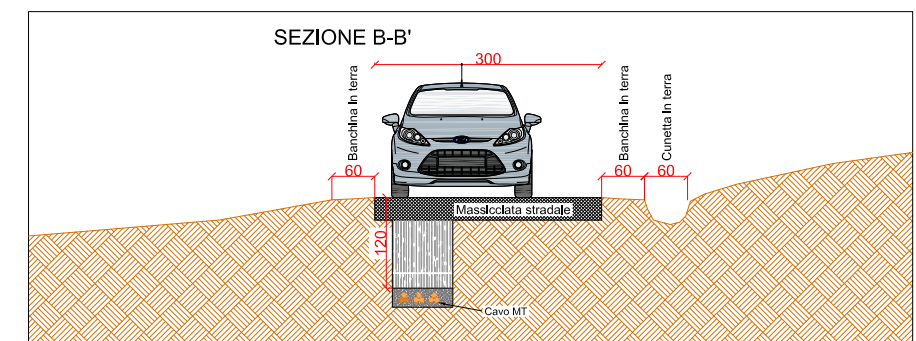
PIANTA



SEZIONE A-A'



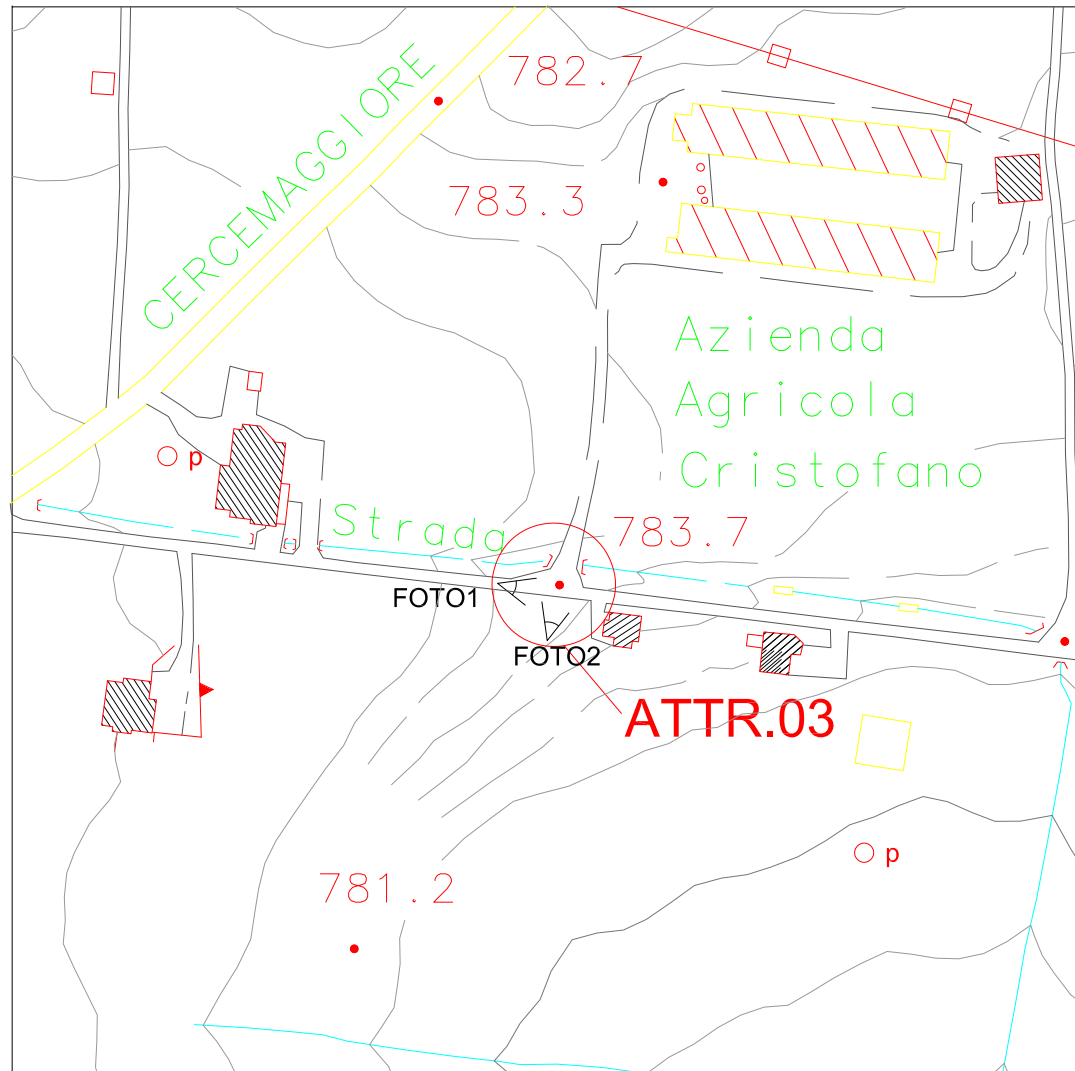
SEZIONE B-B'



# ATTRAVERSAMENTO 03

UTM WGS84 E 480848 N 4588880

INQUADRAMENTO CRT 1:2000



PIANTA

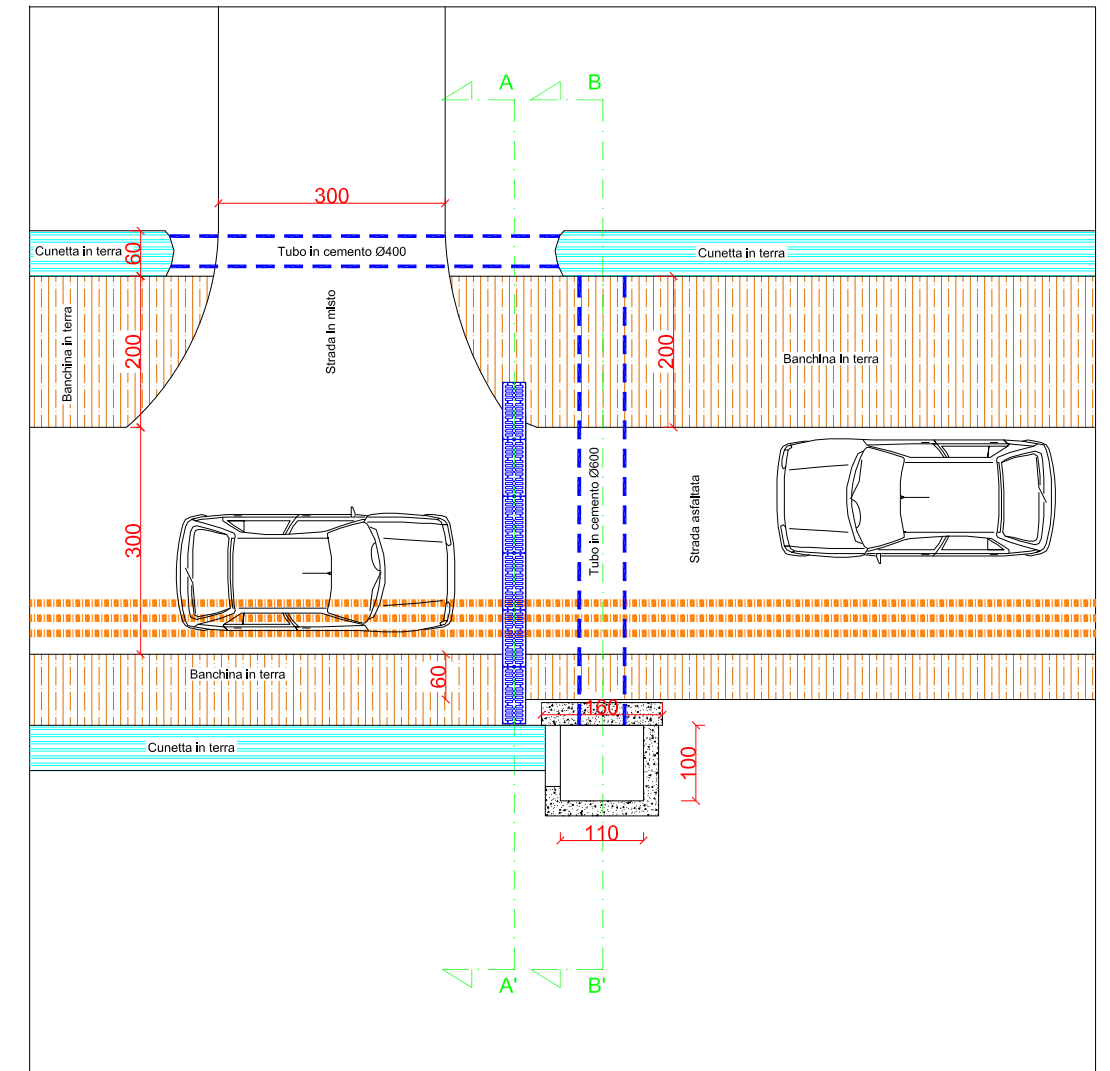


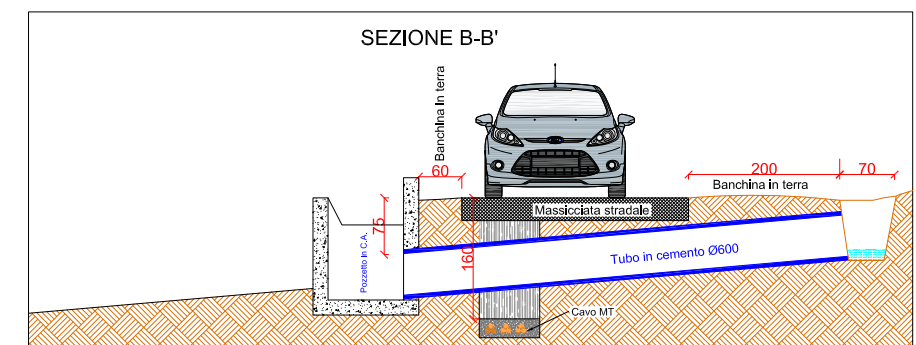
FOTO1



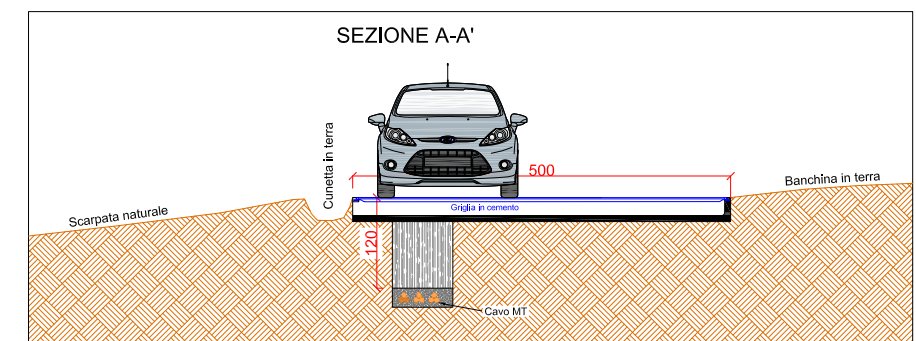
FOTO2



SEZIONE B-B'



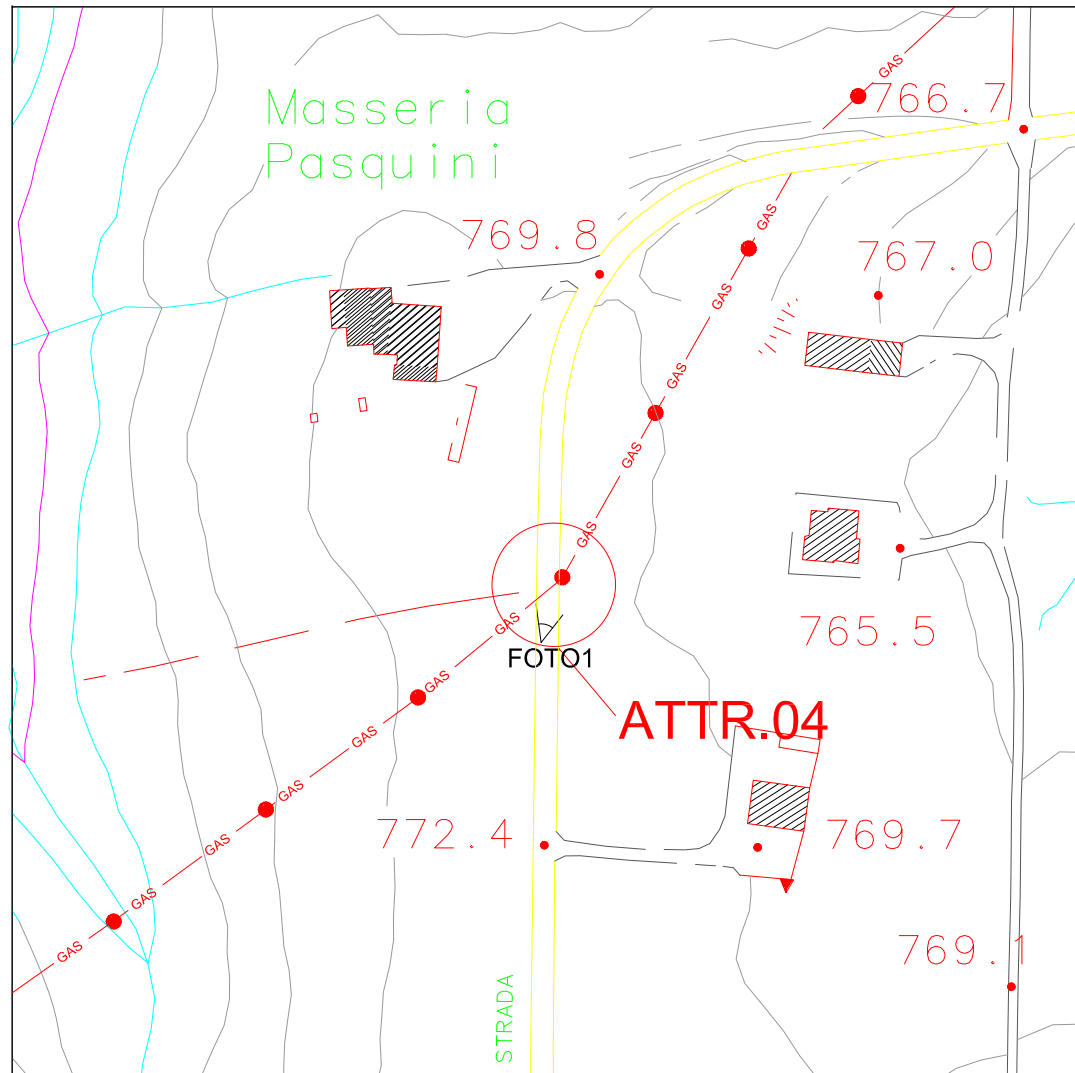
SEZIONE A-A'



# ATTRAVERSAMENTO 04

UTM WGS84 E 480858 N 4589412

INQUADRAMENTO CRT 1:2000



PIANTA

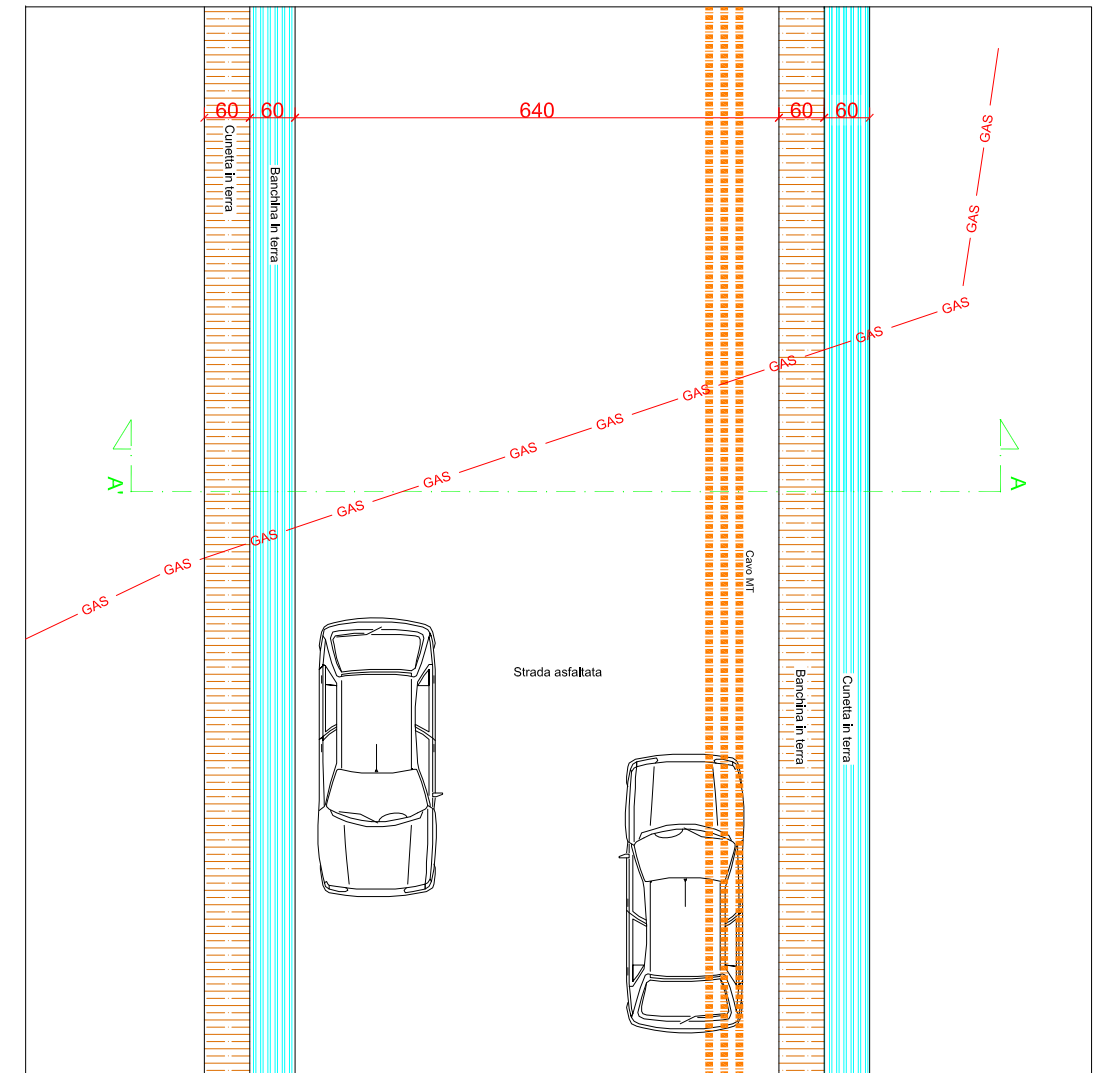
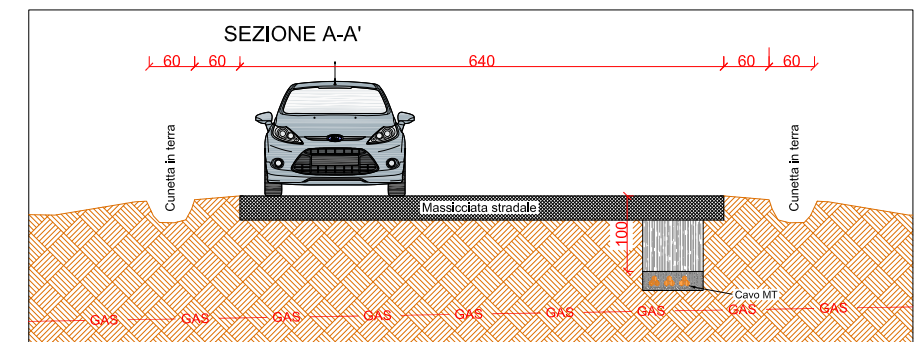


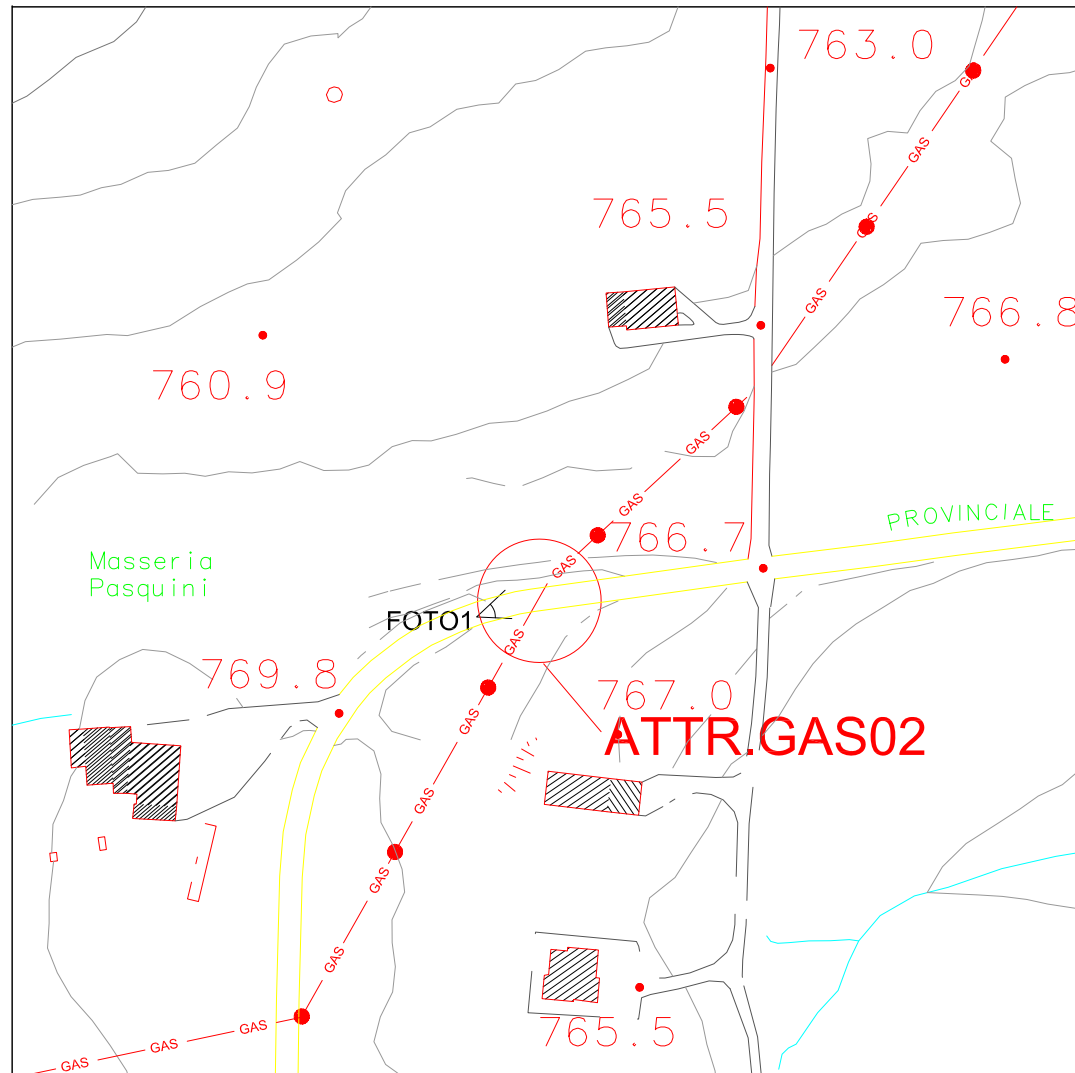
FOTO1



# ATTRAVERSAMENTO 05

UTM WGS84 E 480932 N 4589546

INQUADRAMENTO CRT 1:2000



PIANTA

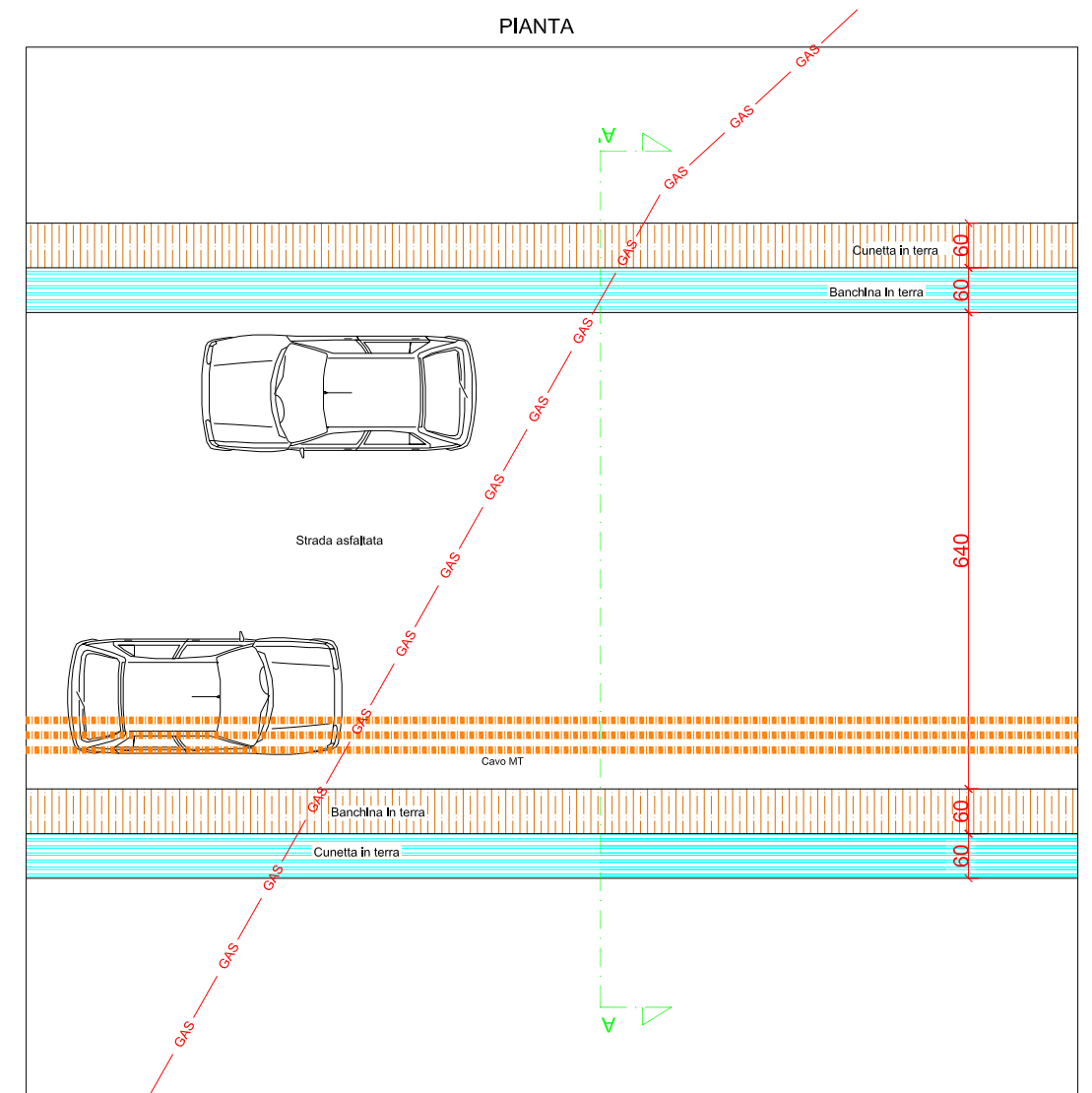
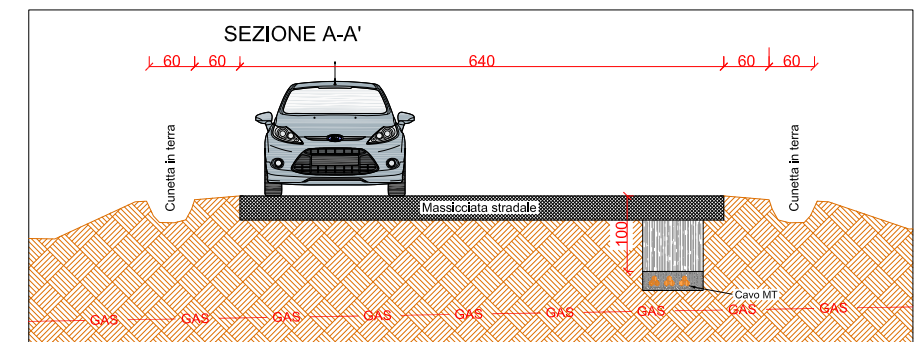


FOTO1



# ATTRAVERSAMENTO 06

UTM WGS84 E 481070 N 4589564

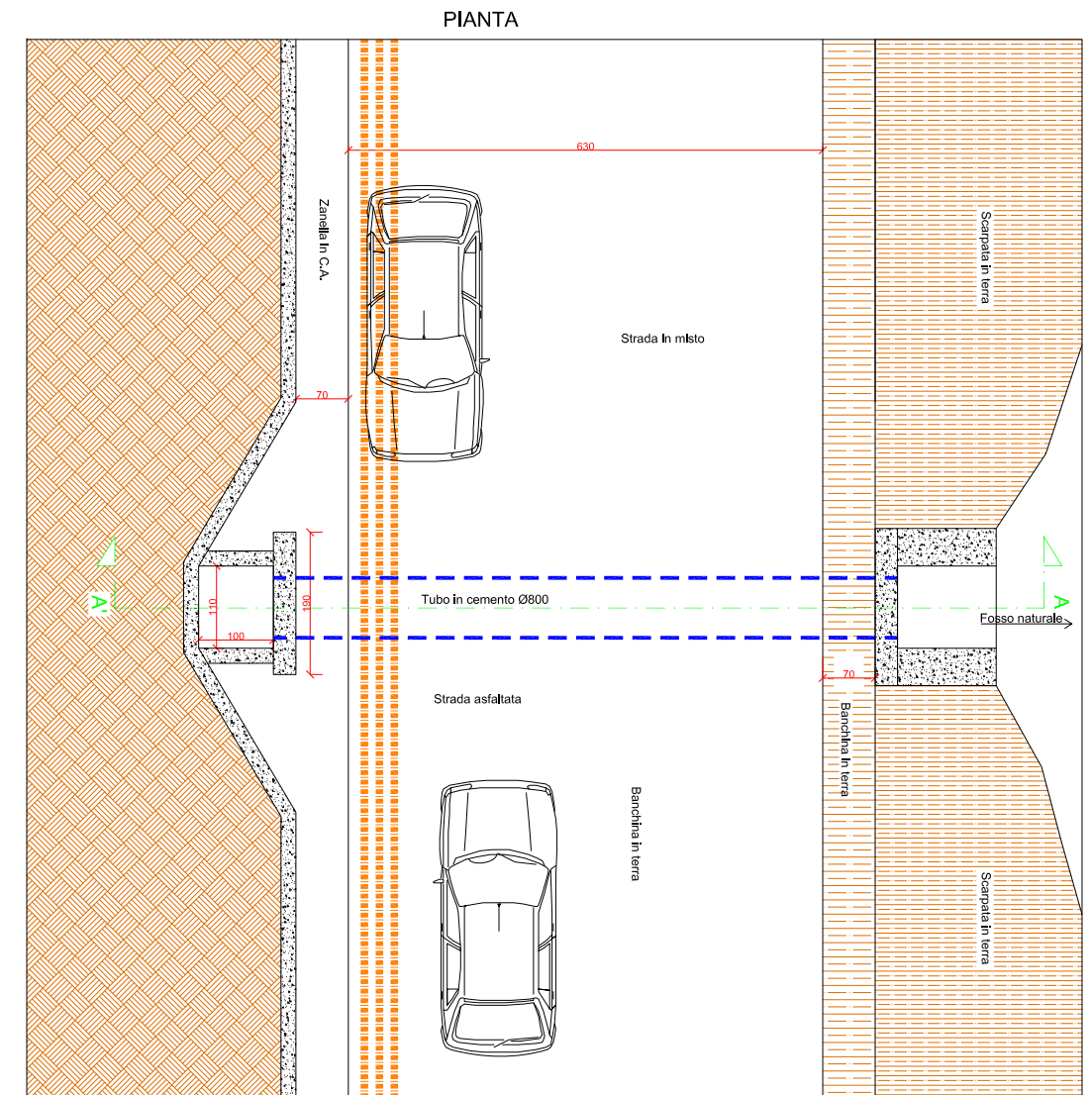
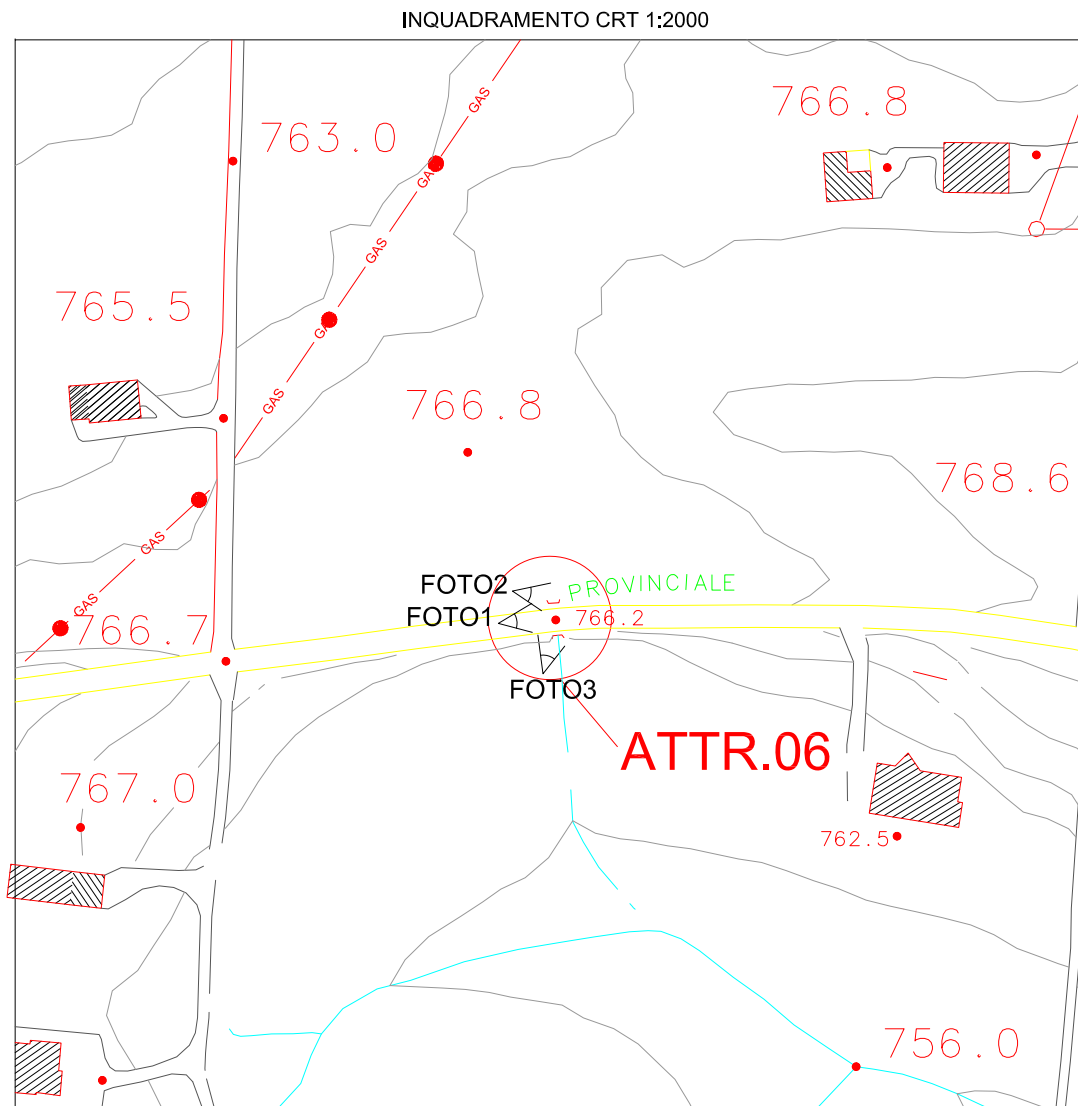


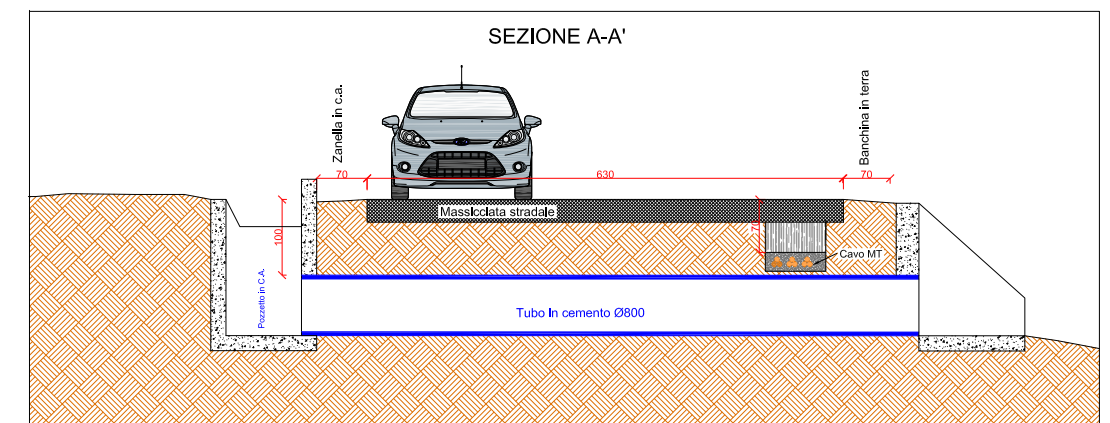
FOTO1



FOTO2



FOTO3

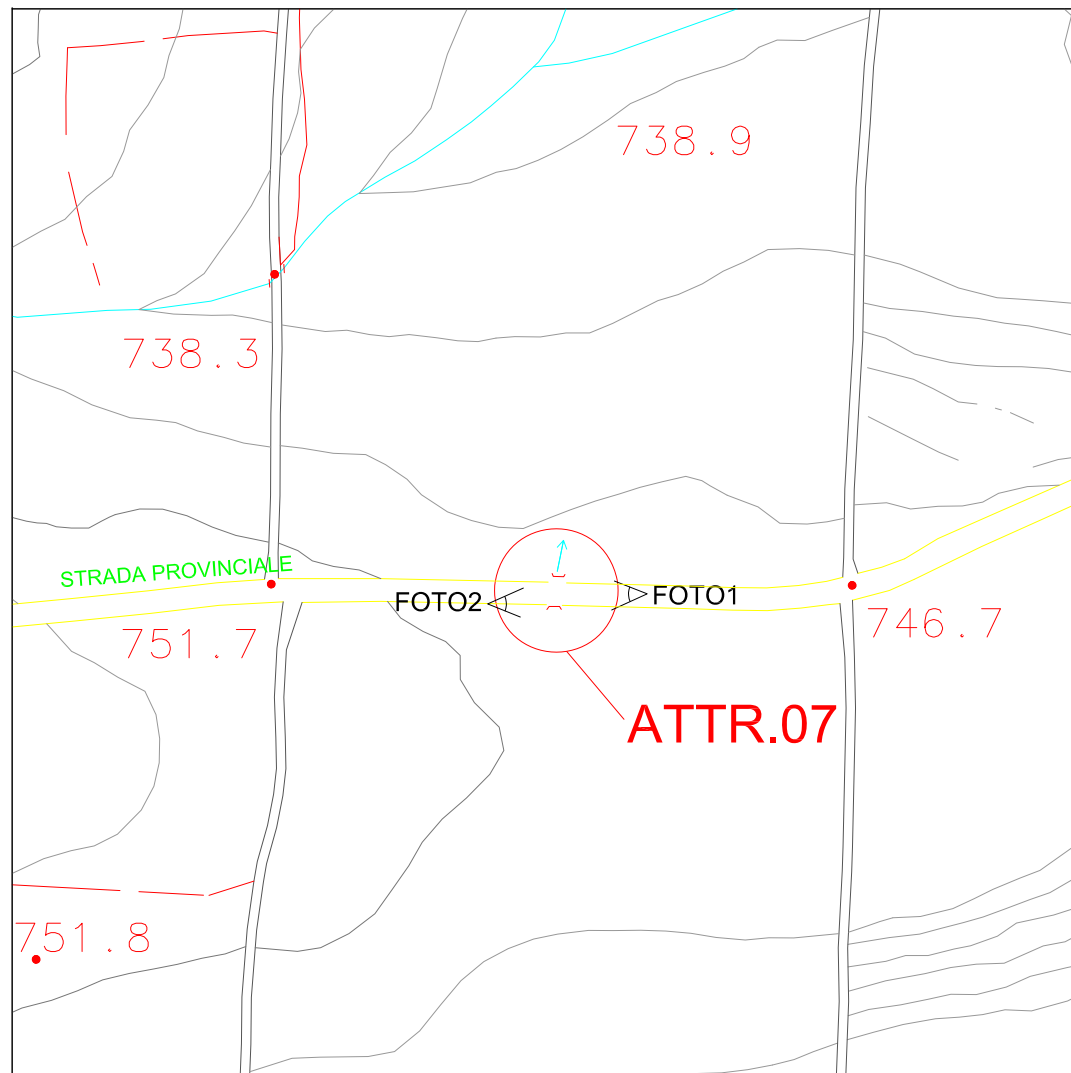




# ATTRAVERSAMENTO 07

UTM WGS84 E 481737 N 4589563

INQUADRAMENTO CRT 1:2000



PIANTA

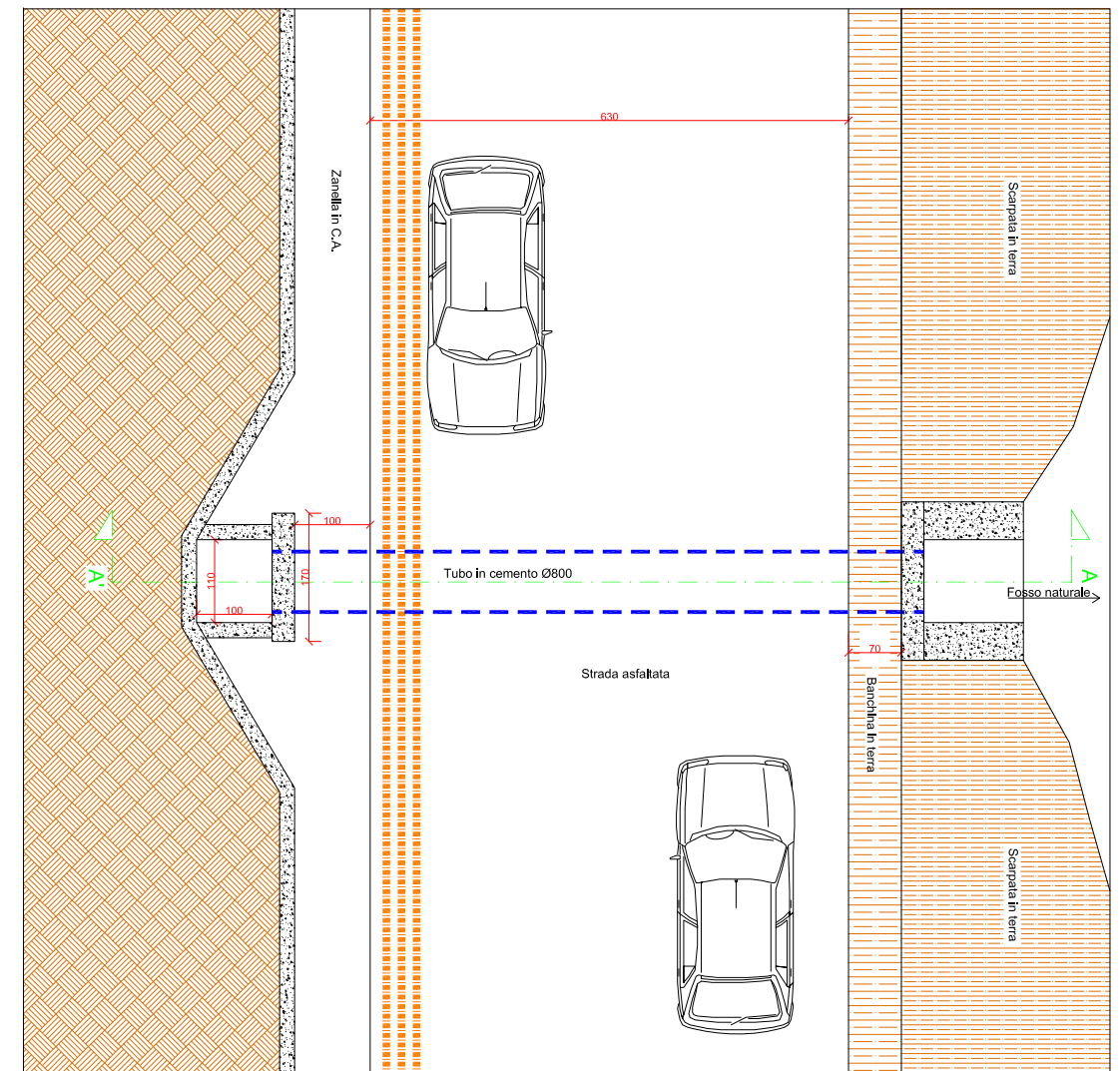


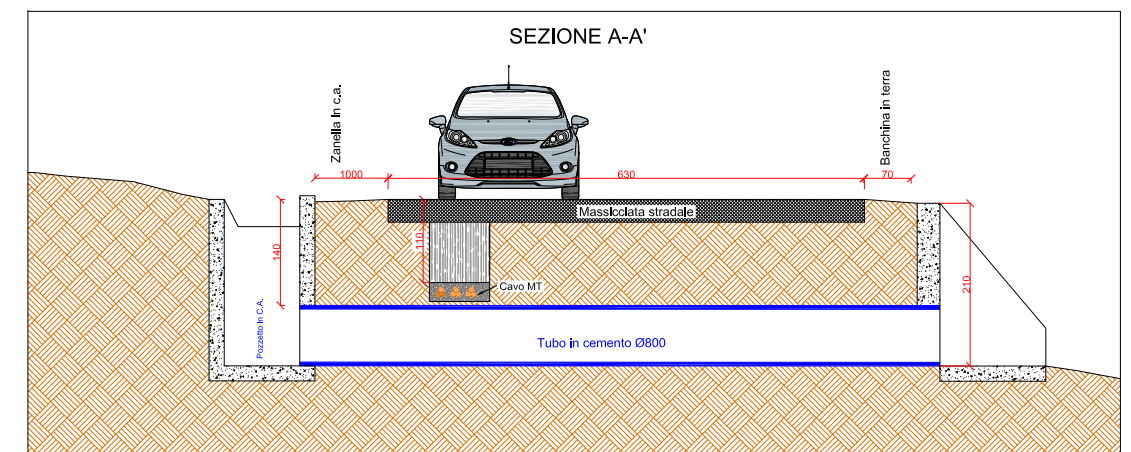
FOTO1



FOTO2



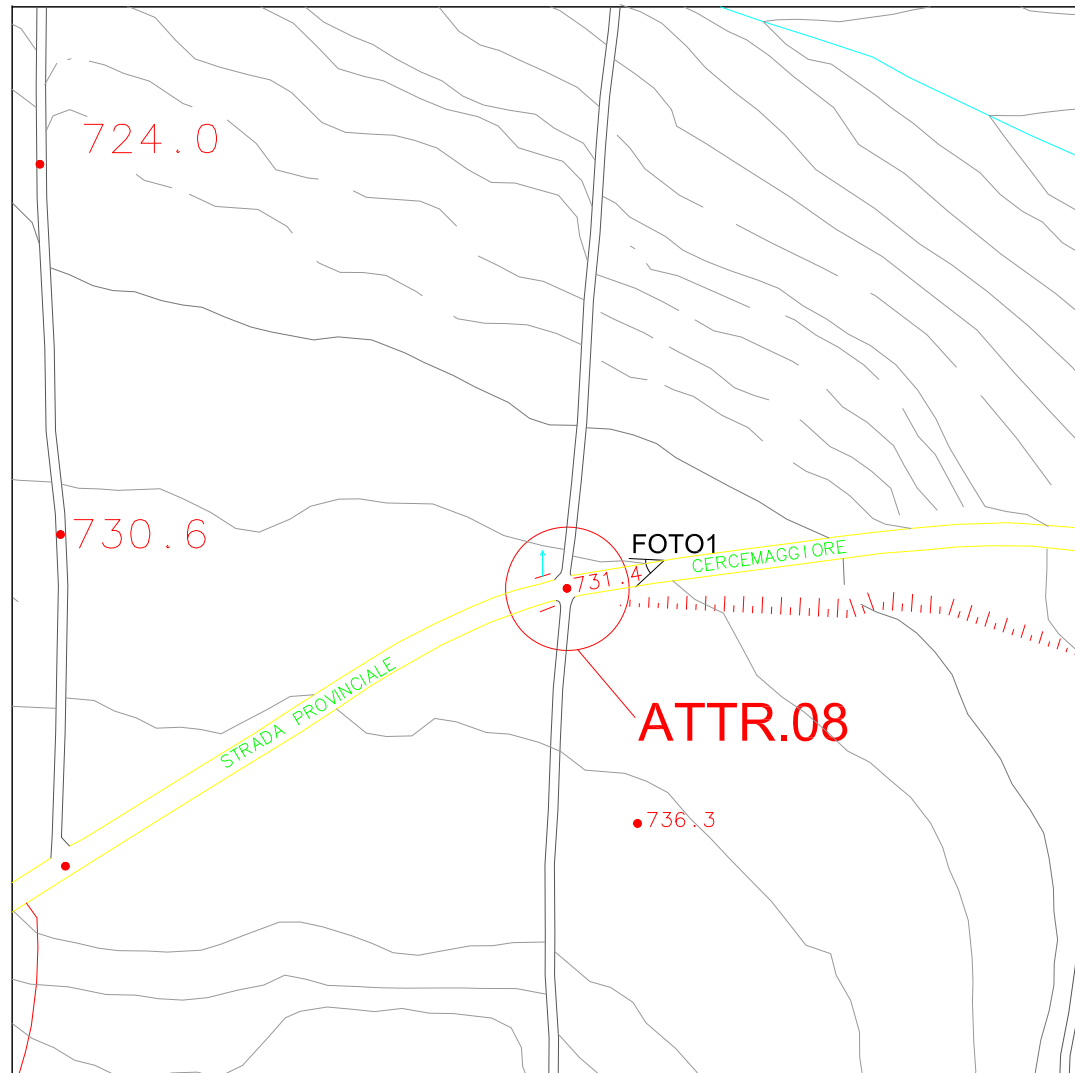
SEZIONE A-A'



# ATTRAVERSAMENTO 08

UTM WGS84 E 482118 N 4589722

INQUADRAMENTO CRT 1:2000



PIANTA

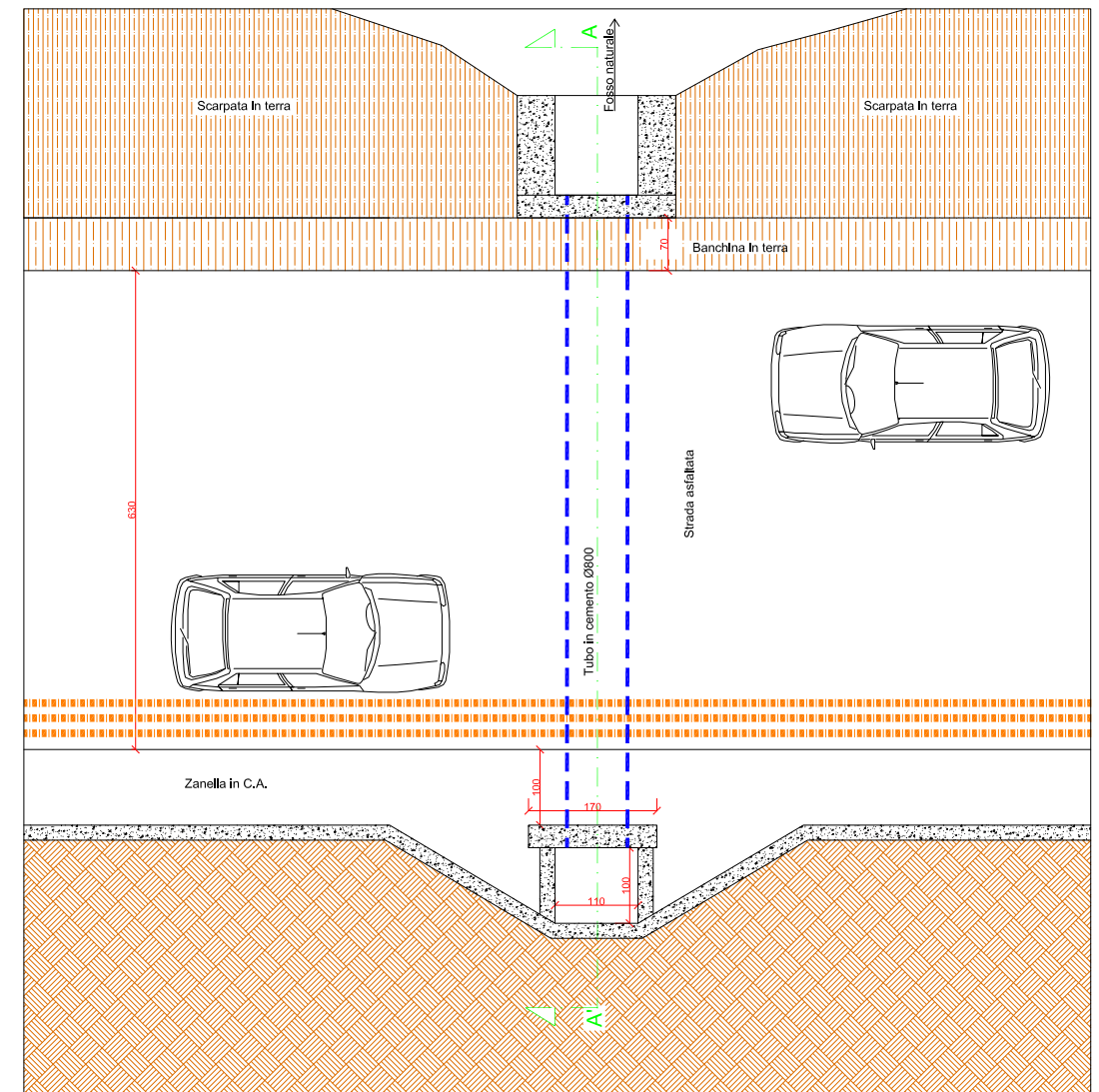
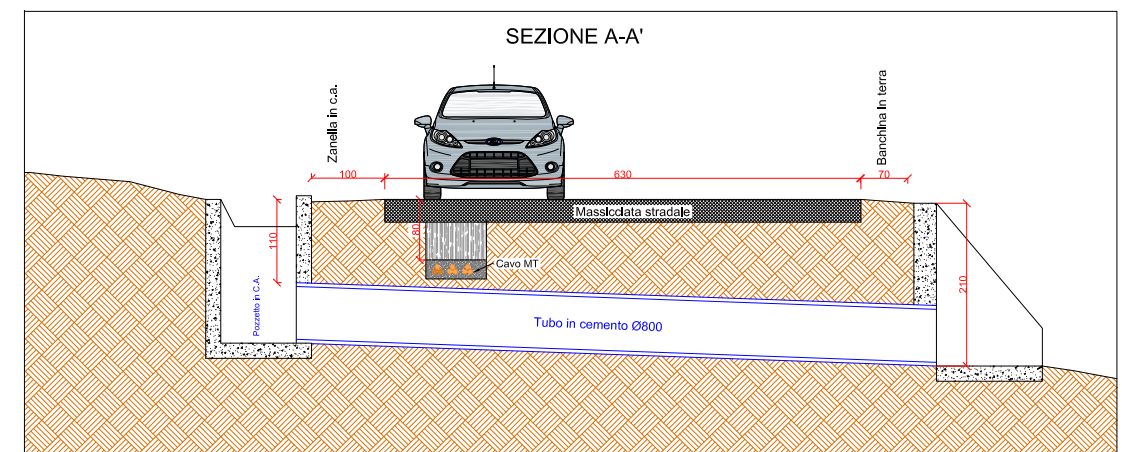


FOTO1



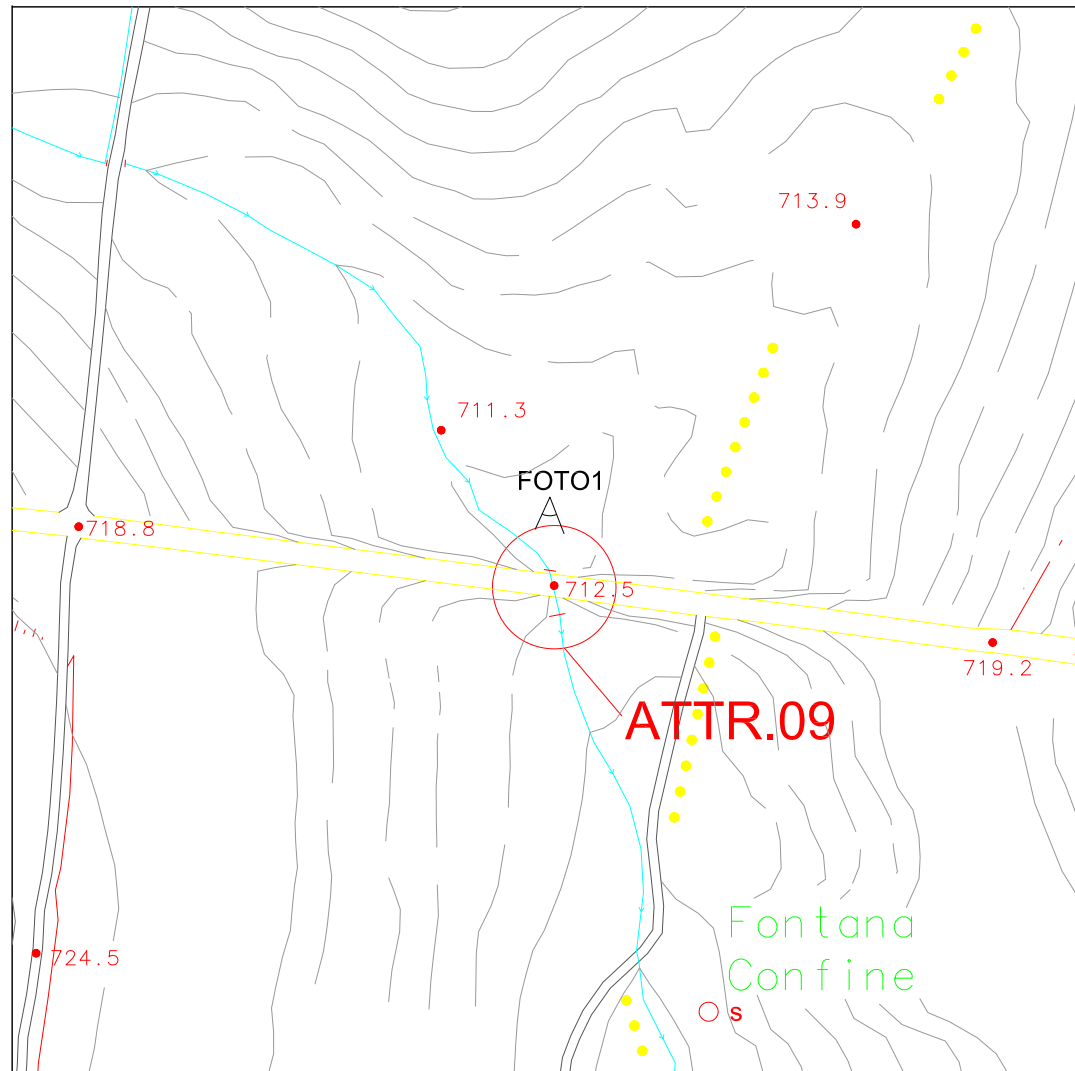
SEZIONE A-A'



# ATTRAVERSAMENTO 09

UTM WGS84 E 482392 N 4589718

INQUADRAMENTO CRT 1:2000



PIANTA

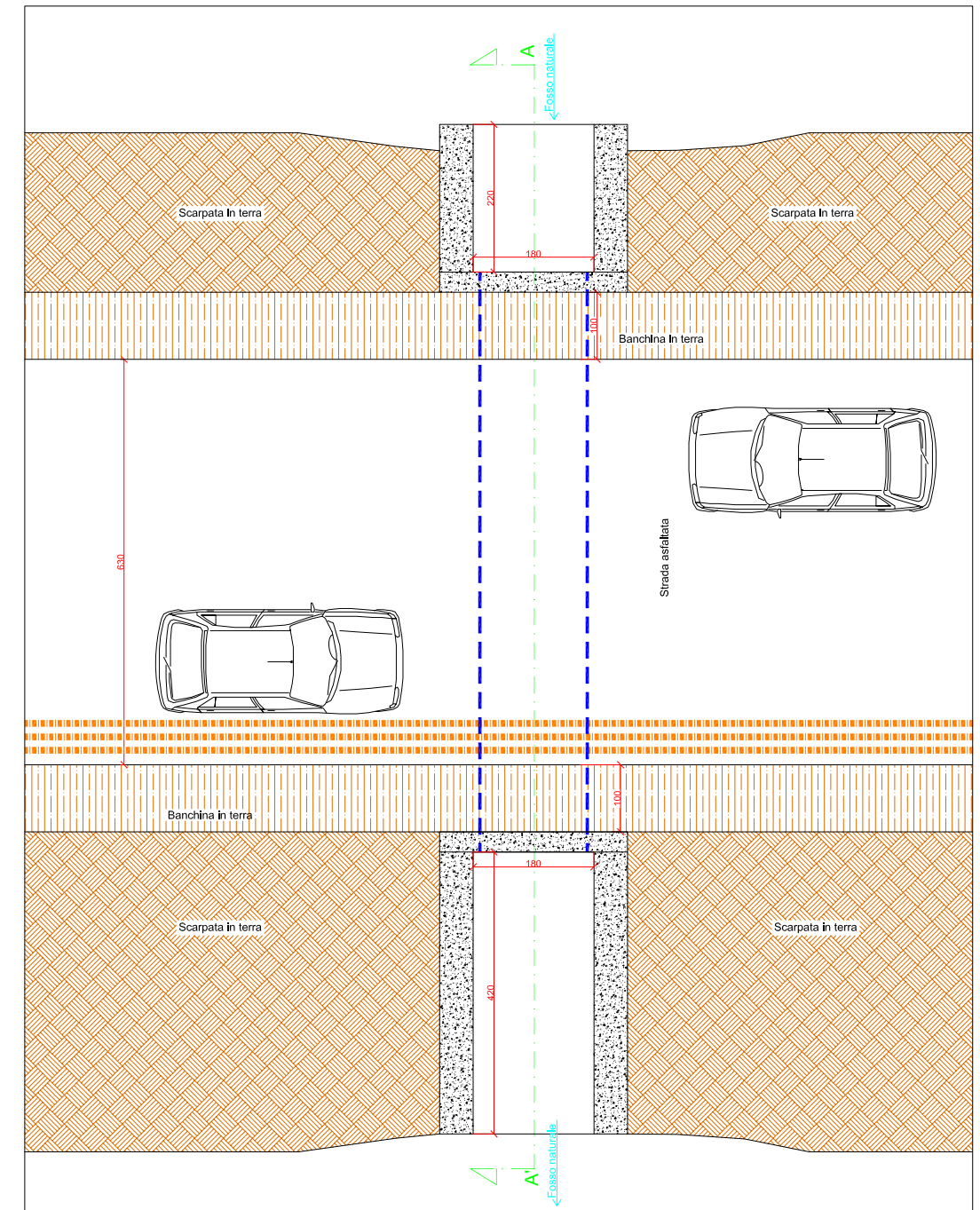


FOTO2

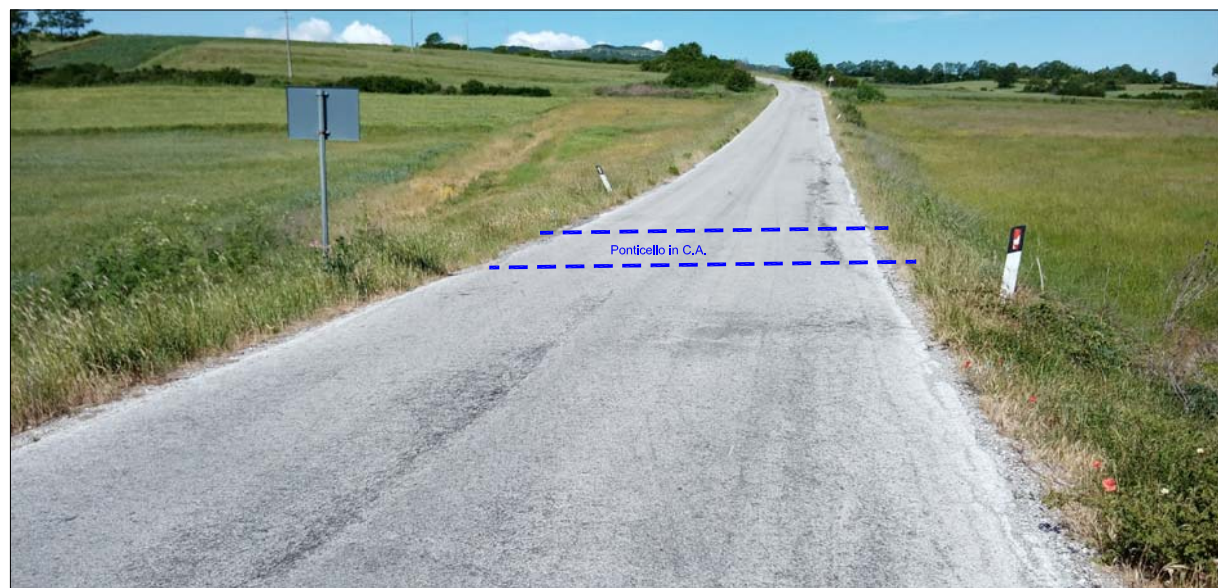
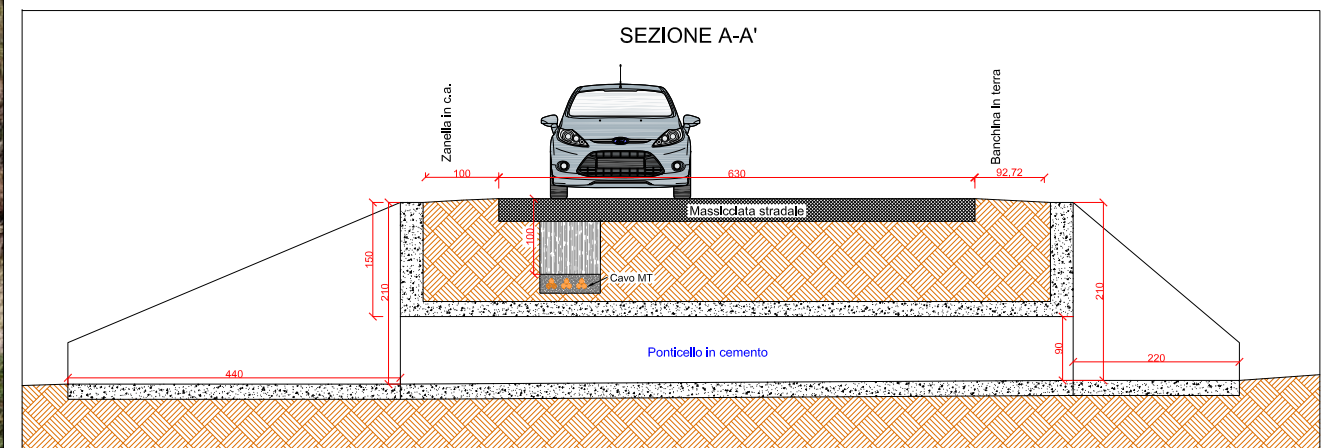


FOTO1



SEZIONE A-A'



# ATTRAVERSAMENTO 10

UTM WGS84 E 482780 N 4589815

INQUADRAMENTO CRT 1:2000

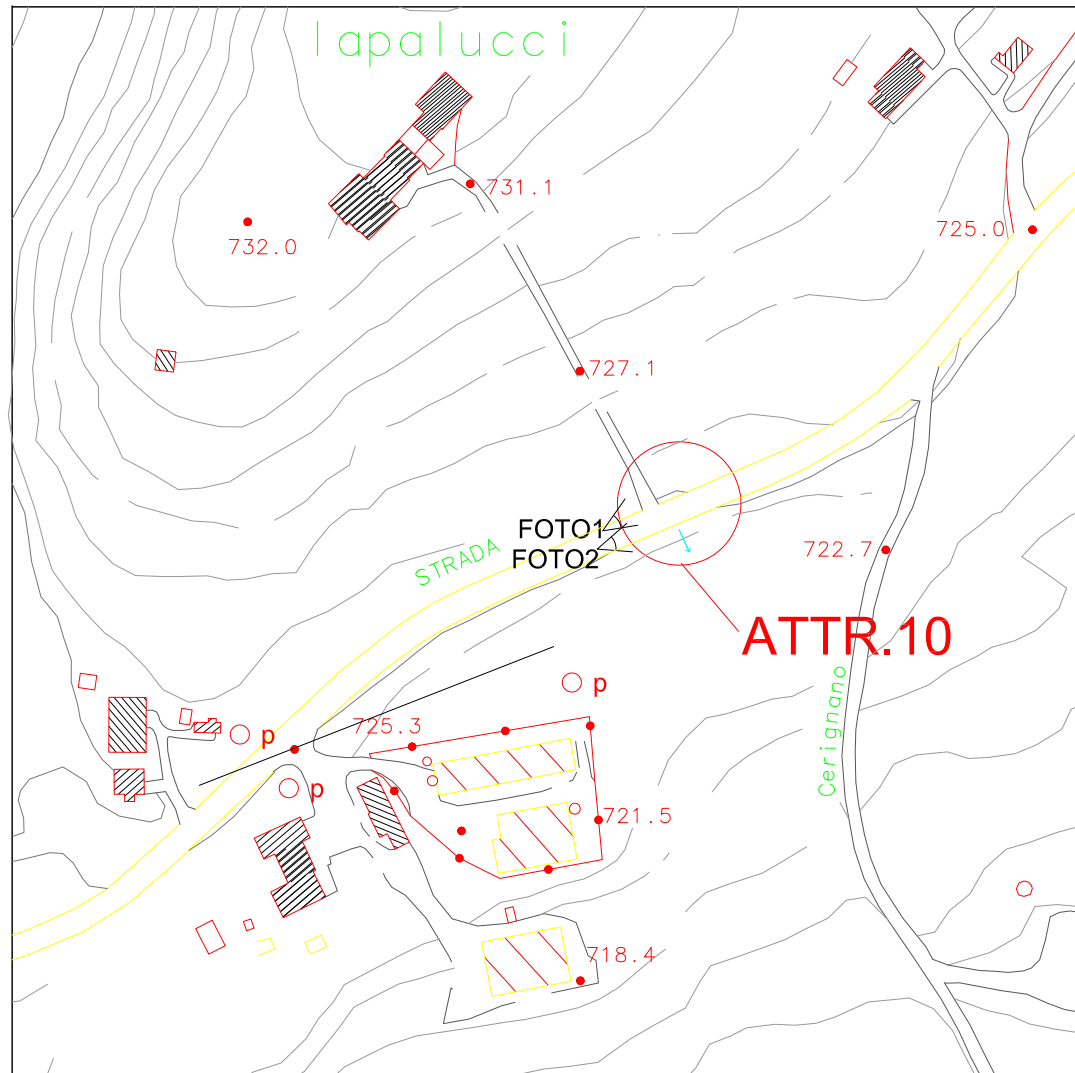


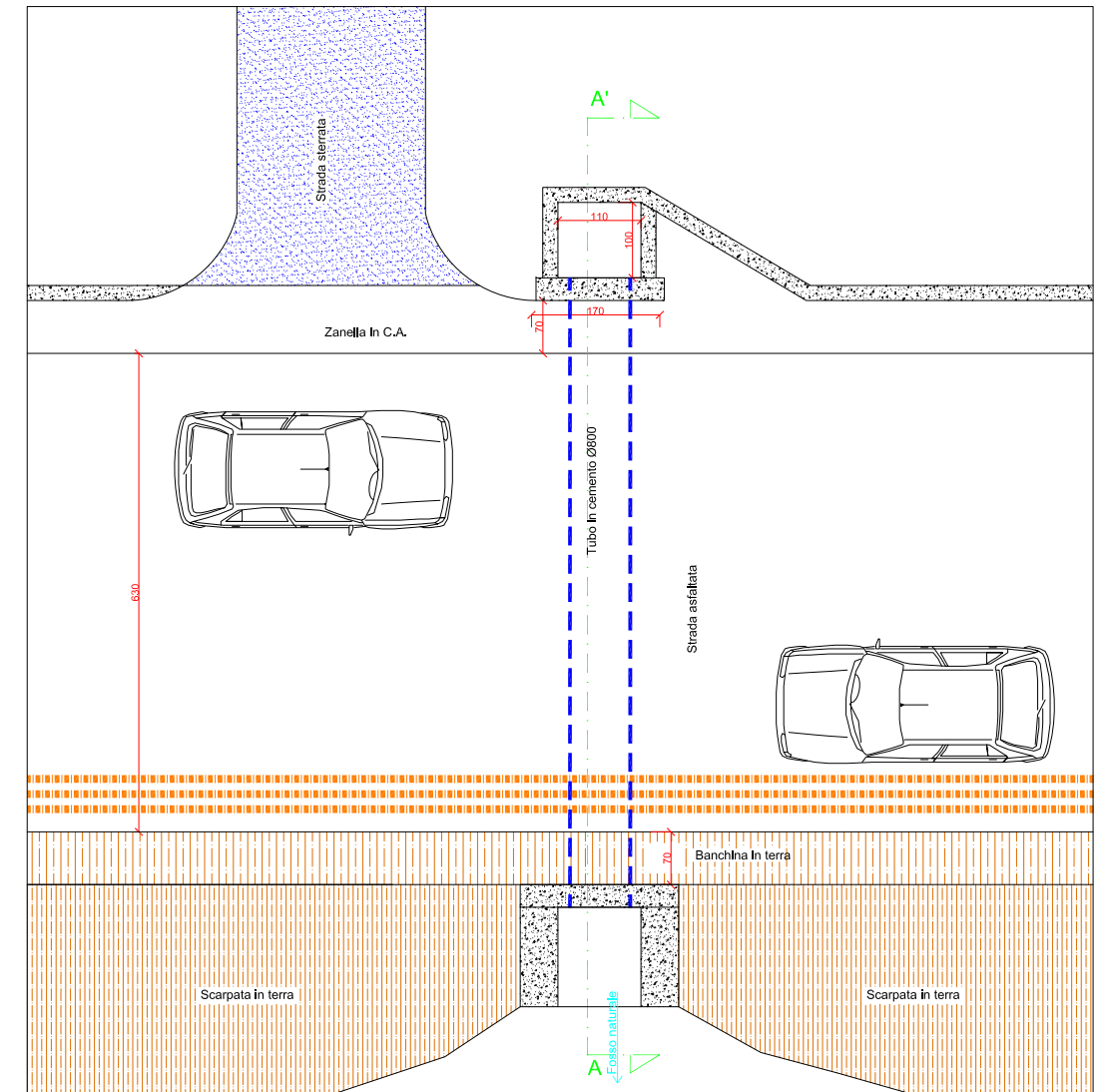
FOTO1



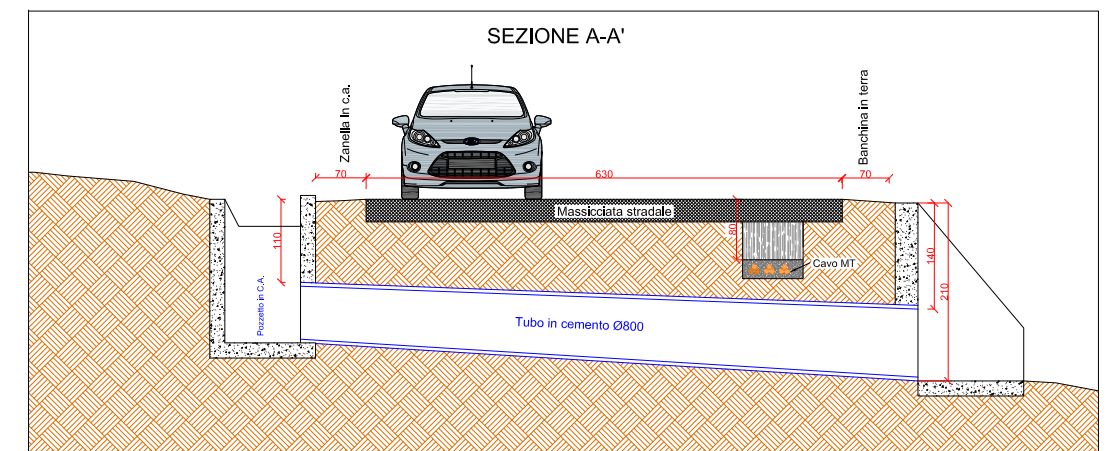
FOTO2



PIANTA



SEZIONE A-A'



# ATTRAVERSAMENTO 11

UTM WGS84 E 482867 N 4589601

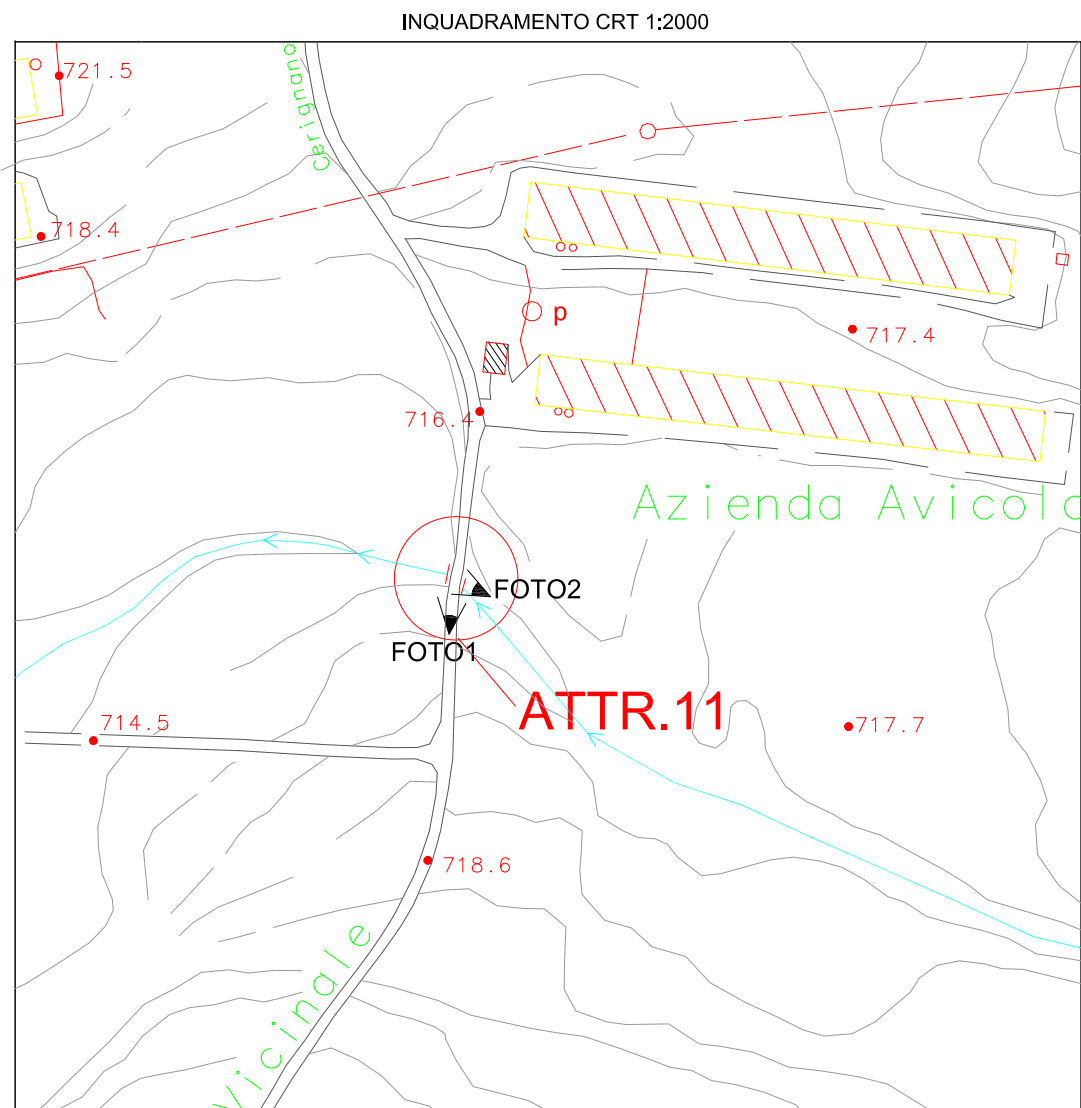
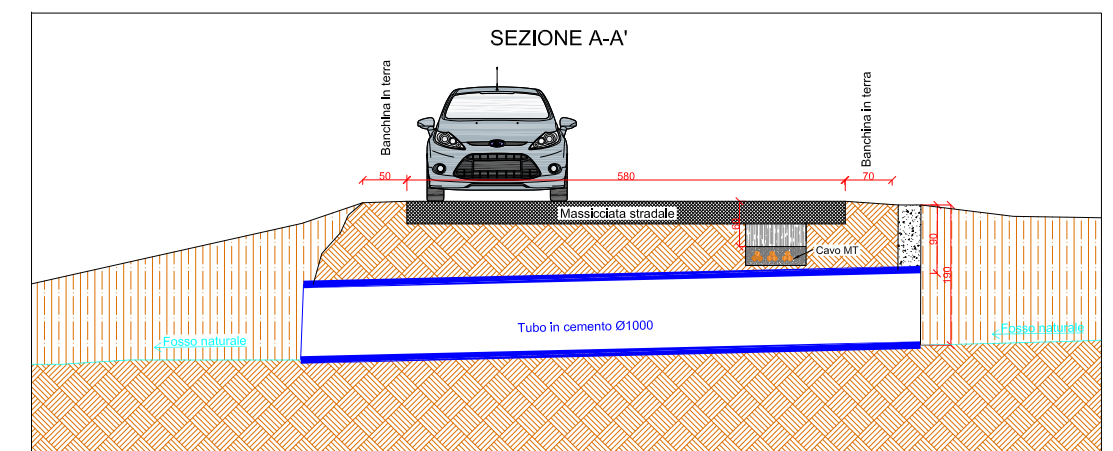
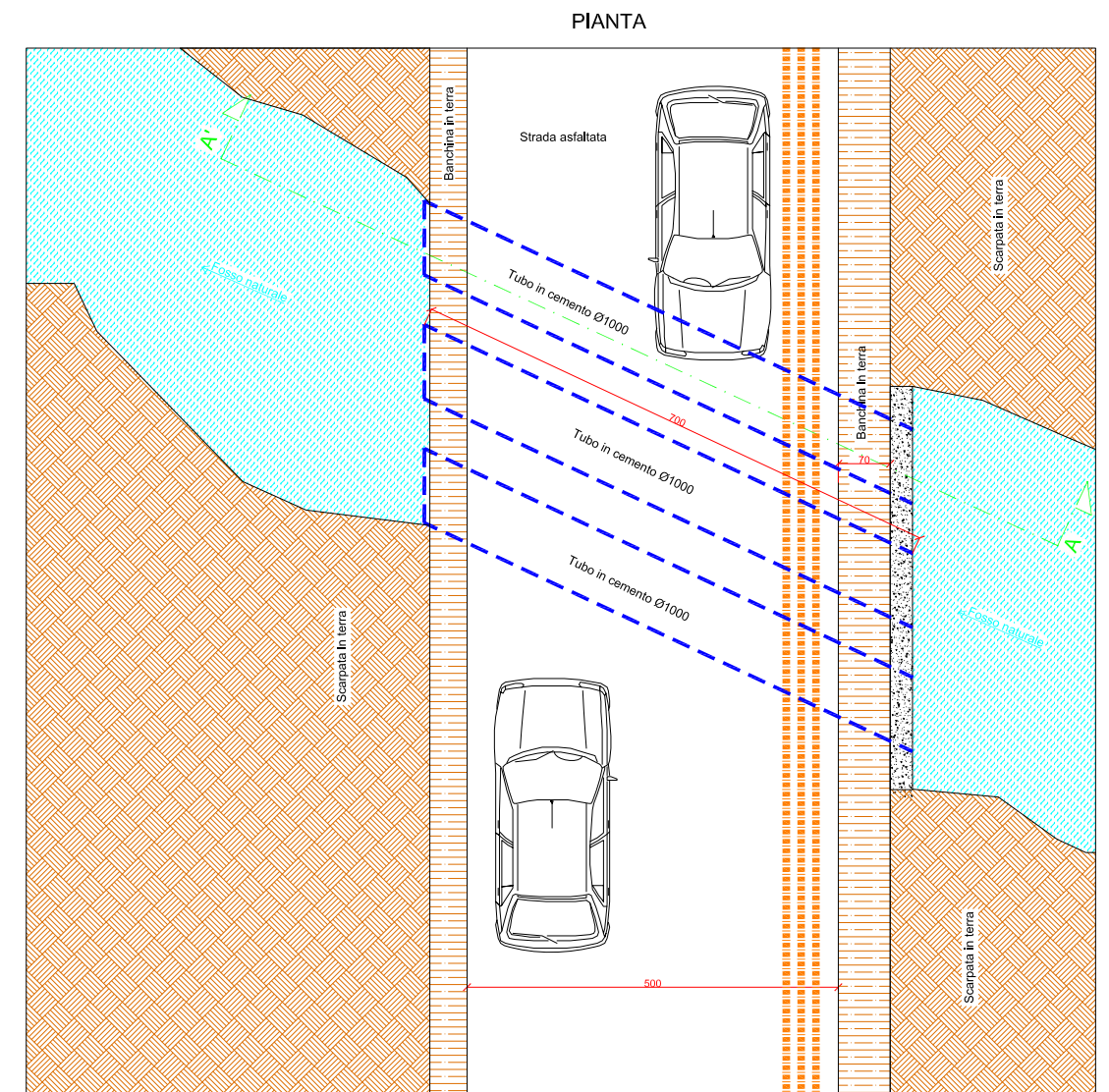


FOTO1



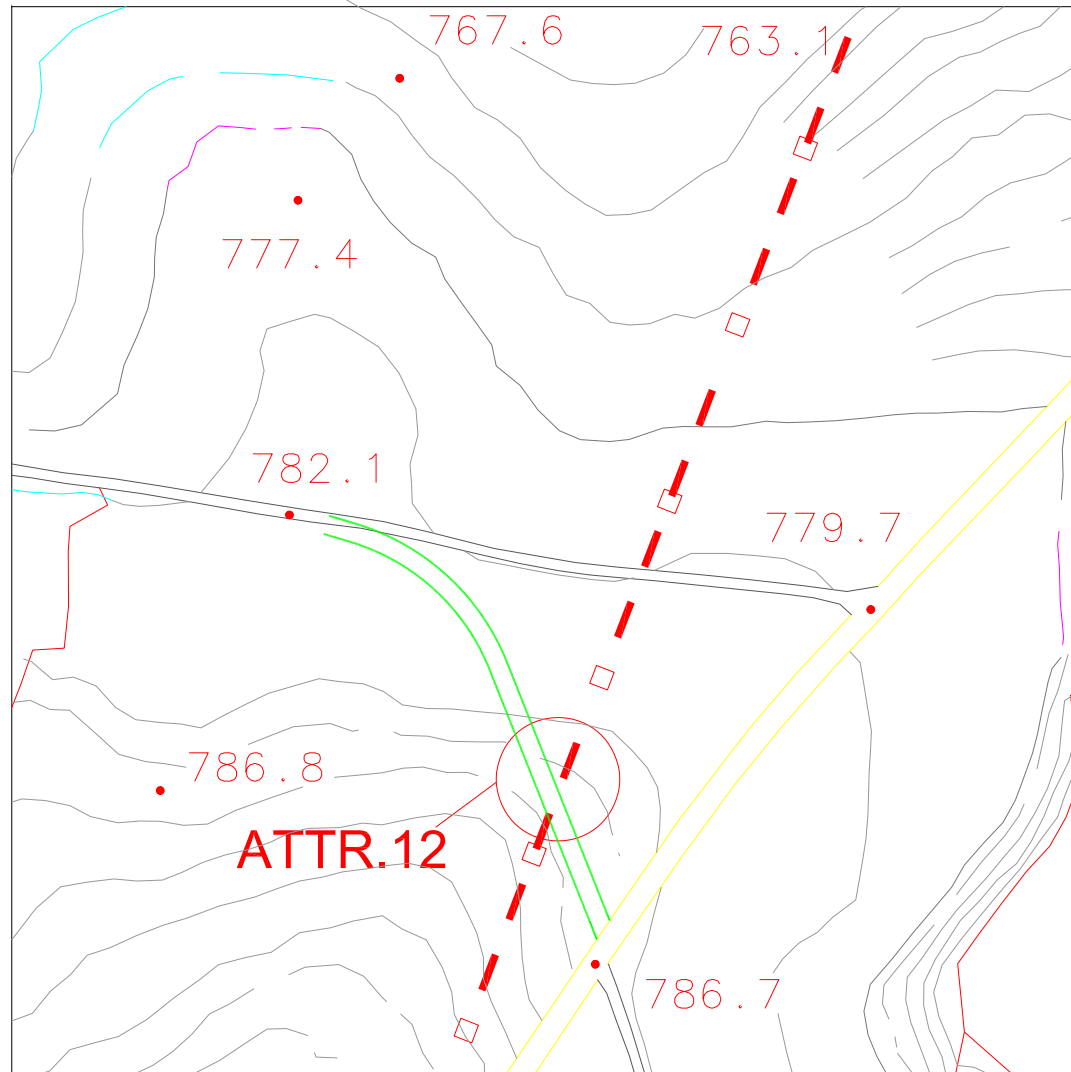
FOTO2



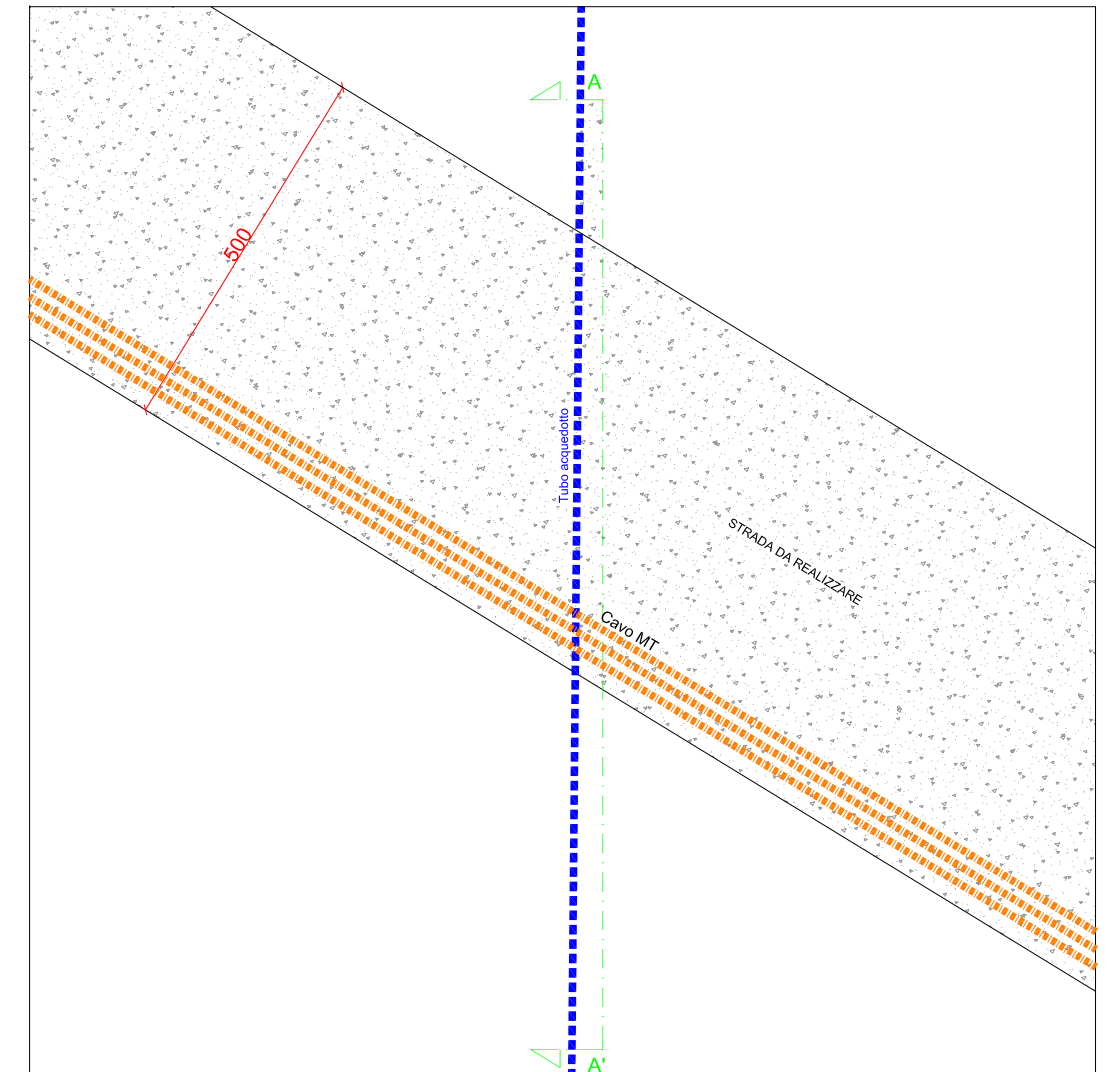
# ATTRAVERSAMENTO 12

UTM WGS84 E 483783 N 4588676

INQUADRAMENTO CRT 1:2000



PIANTA



FOTO



SEZIONE A-A'

